

1939

Natsihi Yearbook 1939

Whitworth University

Follow this and additional works at: <http://digitalcommons.whitworth.edu/yearbooks>

Recommended Citation

Whitworth University, "Natsihi Yearbook 1939" Whitworth University (1939). *Natsihi Yearbook*. Paper 24.
<http://digitalcommons.whitworth.edu/yearbooks/24>

This text is brought to you for free and open access by the University Archives at Whitworth University. It has been accepted for inclusion in Natsihi Yearbook by an authorized administrator of Whitworth University.

1939

Natsihi Yearbook 1939

Whitworth University

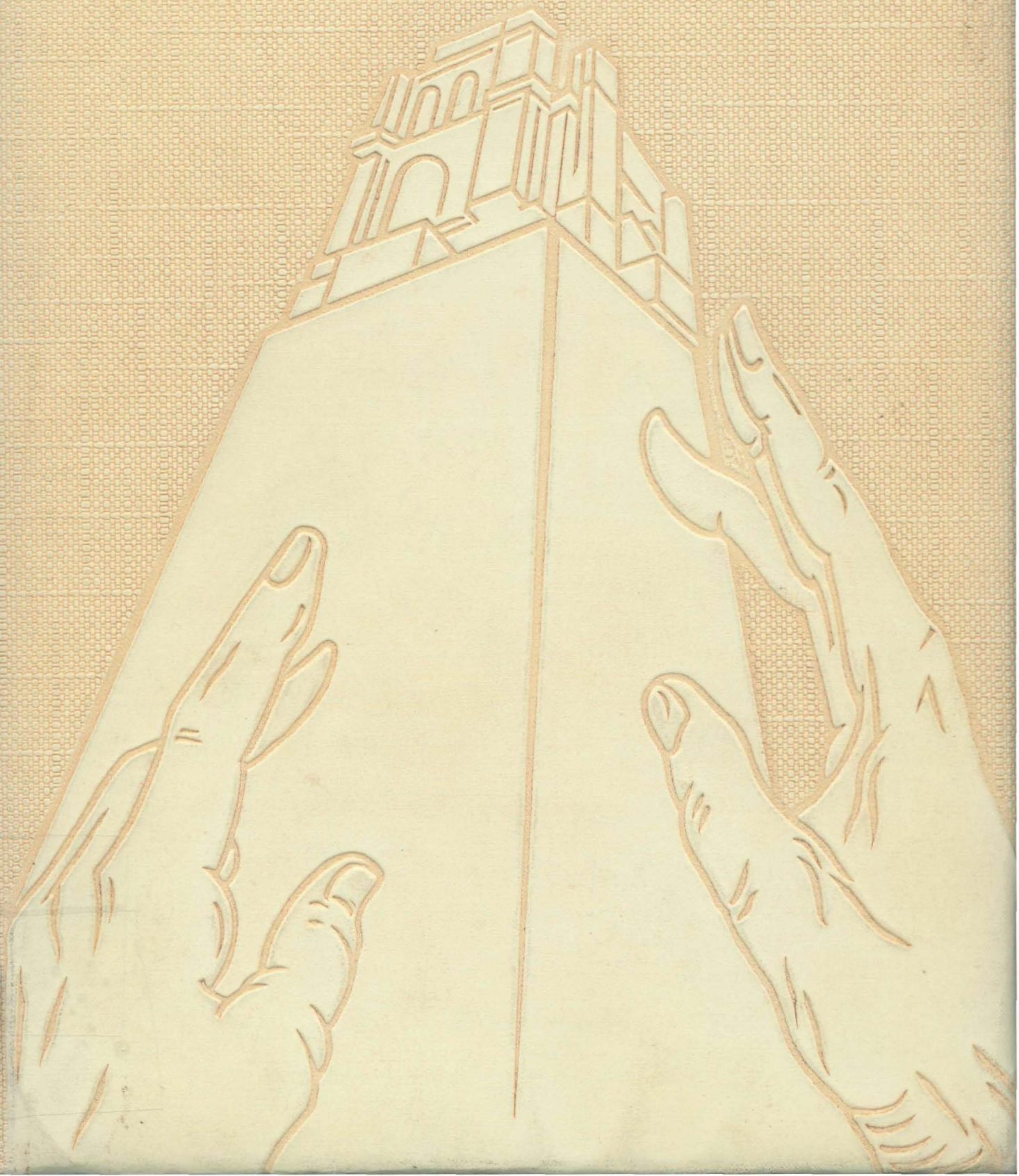
Follow this and additional works at: <http://digitalcommons.whitworth.edu/yearbooks>

Recommended Citation

Whitworth University, "Natsihi Yearbook 1939" Whitworth University (1939). *Natsihi Yearbook*. Paper 24.
<http://digitalcommons.whitworth.edu/yearbooks/24>

This Book is brought to you for free and open access by the University Archives at Whitworth University. It has been accepted for inclusion in Natsihi Yearbook by an authorized administrator of Whitworth University.

natsihi 1939



67



THE JUNIOR CLASS
OF WHITWORTH COLLEGE

Presents —

THE NINETEEN HUNDRED THIRTY-NINE

natsihi

Foreword

We, the Class of 1940, have chosen our theme "hands" because they are the tools by which our work has been accomplished. Our hands have transmitted our thoughts to paper in the classroom, have dissected in the science laboratories, have expressed our emotions in drama and forensics, and have produced beautiful music. All our achievements have been accomplished through these implements—our hands.



Dedication

To you, who have been such a loyal friend and sage counsellor to every student; who have ever striven to maintain the high standards of scholarship and lofty ideals for which Whitworth is noted; and who have been an able leader and executive in the joint capacity of dean and acting-president of the college, Francis T. Hardwick, we dedicate this *Natsihi* of 1939 as a symbol of our sincere appreciation of your excellent services to Whitworth.

Honor

The *Natsihi* HONOR goes to Miss Estella Baldwin, the efficient "right-hand man" of the dean, who ably handles the secretarial affairs of Dr. Hardwick, and who helpfully brings order out of chaos for the bewildered freshmen who experience a titanic struggle in endeavoring to arrange their courses on Registration Day.



Administration







Dr. Francis Tiley Hardwick
Dean of Men



Miss Marion R. Jenkins
Dean of Women

Elizabeth Bachimont, B. A.
Classical Languages



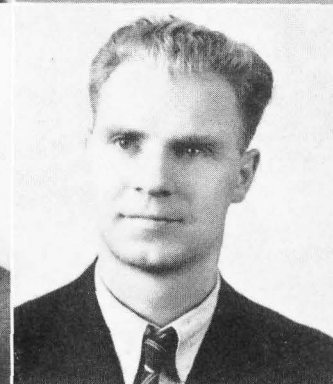
J. W. Countermin, M. A.
Christian Education

Oscar K. Dizmang, M. A.
Economics



Estella E. Baldwin, M. A.
Registrar

Otto G. Bachimont, M. A.
Modern Languages



Ralph Schlichtig, M. S.
Mathematics and Physics

Goldie P. Merrill, Ph. D.
Education and English



Edith A. Serier, B. S.
Librarian



Arthur E. Uhe
First Prize of Grand Distinction,
Brussels Conservatory
Violin and Orchestra

Herman Hausheer, Ph. D.
Sociology



Leslie R. Hedrick, Ph. D.
Biology

Orpha Helm Hedrick, B. A.
Women's Athletics



Winifred McNair Hopkins, B. A.
Voice and Chorus

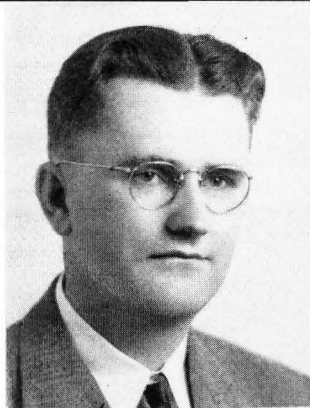
Olive Logerstrom, M. A.
Home Economics



Helen L. Magill, M. A.
English and Literature

Isabelle Carolyn McLeod, B. A.
Speech and Dramatics

John A. Carlson, M. S.
Mathematics



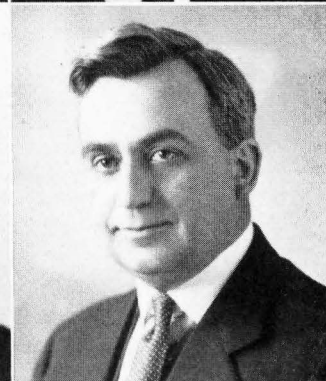
Frances E. Rose, M. D.
Hygiene

Anna J. Carrel, M. Mus.
Piano



Keith A. Murray, B. A.
Promotional Department

Gerald Stannard, B. A.
Men's Athletics




B. C. Neustel, M. S.
Chemistry

Lilian G. Peck, B. Di.
Bursar



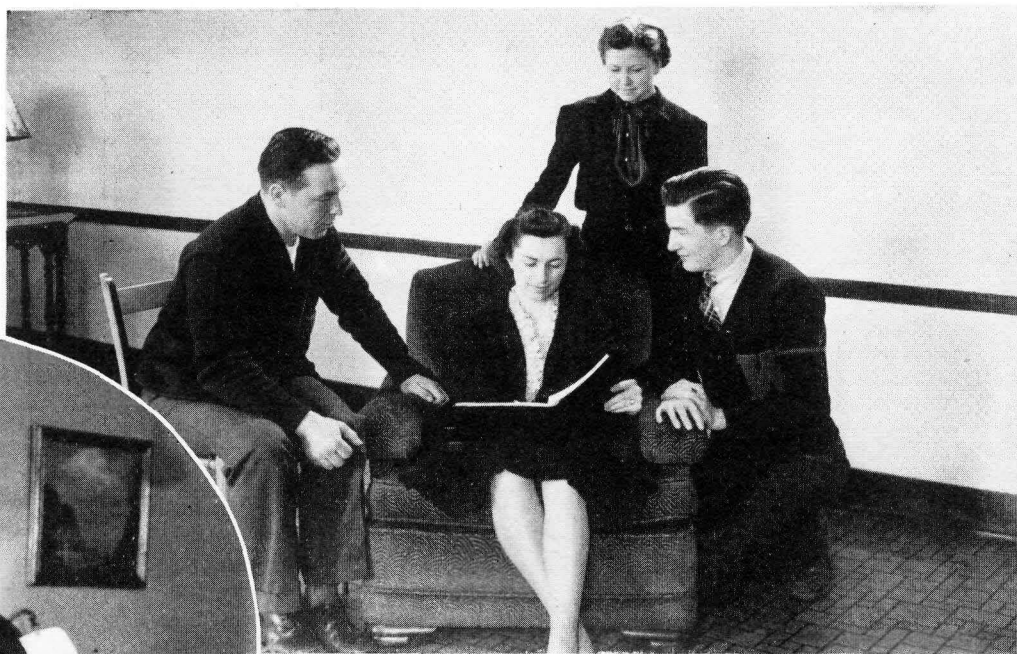
L. K. Bowersox, Ph. D.
History

Student Body



A black and white photograph capturing a moment of academic achievement. A hand, emerging from a dark suit sleeve, holds a dark, rectangular diploma. The diploma is tilted diagonally across the frame. On its surface, the text "tabbitworth College" is printed in a bold, sans-serif font, with "Diploma of Graduation" written in a smaller font directly beneath it. Another hand, also in a dark sleeve, reaches up from the bottom left corner, its fingers slightly curled as if to receive the diploma. The background is a plain, light-colored surface, creating a high-contrast scene that emphasizes the hands and the diploma.

tabbitworth College
Diploma of Graduation



EXECUTIVE BOARD
N. Richardson, Sherwin, Trevitt, MacIntyre



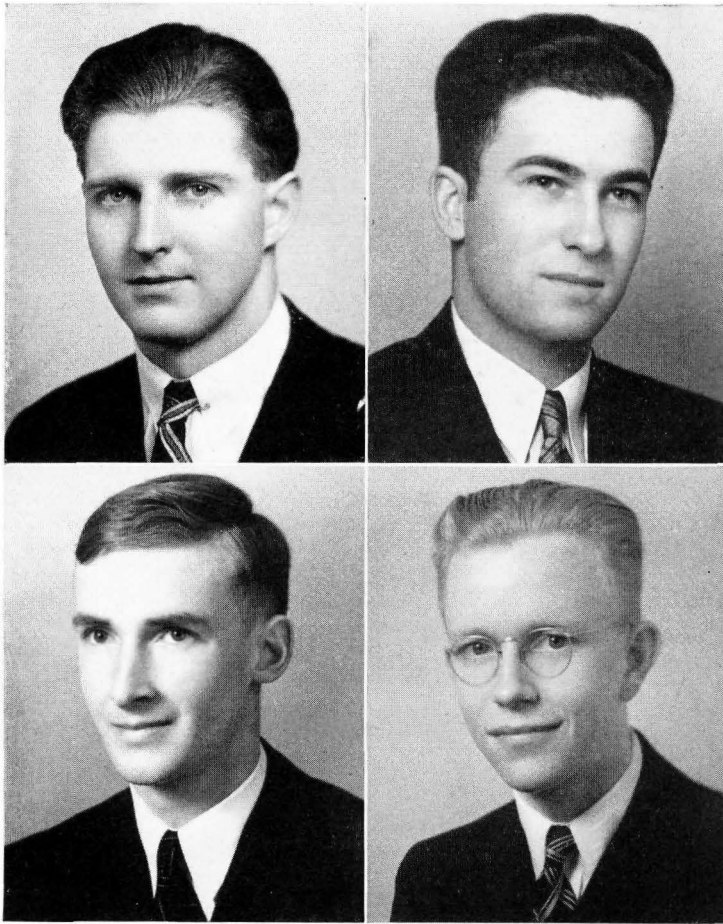
A. S. W. C.

The A. S. W. C. concluded a year of achievement this spring with the student-body election. Garth Steele, outgoing president, can well be proud of the record he and his fellow-officers have made.

They started the fireworks by issuing a handbook and organizing a pep band. They introduced two new amendments which were added to the constitution, and sponsored a high-school oratorical and vocal contest on May Day. They also investigated the possibilities of obtaining a printing press and cement tennis courts for the college.

The officers were: President, Garth Steele; Vice-President, David MacIntyre; Secretary, Mary Trevitt; Auditor, Norman Richardson; Student Council Representative, Evelyn Sherwin.

The new officers elected this spring are: President, Eugene Muench; Vice-President, Lee Rodkey; Secretary, Evelyn Sherwin; Auditor, Dougald Robinson.



GAROLD BECHLER

Major—Education
Minor—Physics

Prof's handy man; master of the Buick "special"; "Listen, Smaller-than-I"; liking for green Chevrolets; amateur landscape artist.

JACK BLAISDELL

Major—History
Minor—Sociology

Quiet but friendly; keen blue eyes; Senior Class treasurer; Volunteer Fellowship; Whitworth Players; Whitworth Hall manager—and treasurer.

DON COLPITTS

Major—Chemistry
Minor—Mathematics

Good sport; "W" Club secretary; tyro woodsman; baseball and basketball; good student; especially fond of Bonde Tuveson.

BLAIR COSMAN

Major—Music (Piano)
Minor—French

Top-notch musician; Art Club president; warm smile plus blond hair; Whitworth String Trio; Spokane Civic Symphony; able accompanist, composer, director, and soloist; Phi Alpha.



STANLEY FRANKS

Major—Economics

Minor—History

Nonchalant; debater; tennis enthusiast; a lover of the aesthetic in life—botany (?); "Hi Johnnie"; prospective future: Stanford—and Scott.

LORINE KIPPEN

Major—Sociology

Minor—Education

Ambitious; French Club; neatness personified; that wind-blown bob; favorite haunt: Y. W. C. A.; sparkling smile.

ALDENA LAUTENSCHLEGER

Major—Nursing Science

Minor—Biology

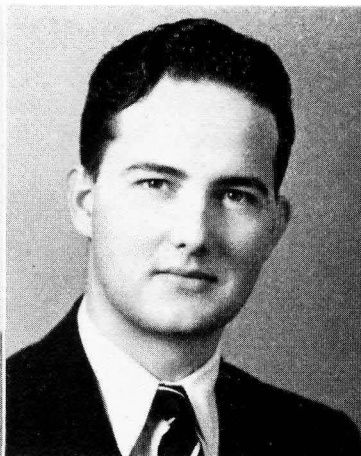
Capable; Sefelo; transfer from St. Luke's Training School; efficient nurse; lover of coffee—and chocolate ice cream.

BETTY JEAN MCINTYRE

Major—Biology

Minor—Chemistry

Blonde; recollections: fire extinguisher episode and "campuistry"; friendly and talkative; able technician, Sacred Heart Nurses' School; future: Los Angeles School of Medicine.



JOY MCCALLUM

Major—Sociology

Minor—Home Economics

A smile that's catching; Whitworth Players: "The Dover Road"; Alpha Beta; likes dramatics and Hendrick; twinkling blue eyes; May princess.

ED MACHLE

Major—Christian Education

Minor—Music

Punster *par excellence*; vice-president of the Philadelphians; "Importance of Being Earnest" and "The Rock"; dorm manager in '38; likes 5 feet 2 and eyes of blue plus wavy black hair, particularly.

MARIAN MINNICH

Major—Sociology

Minor—English

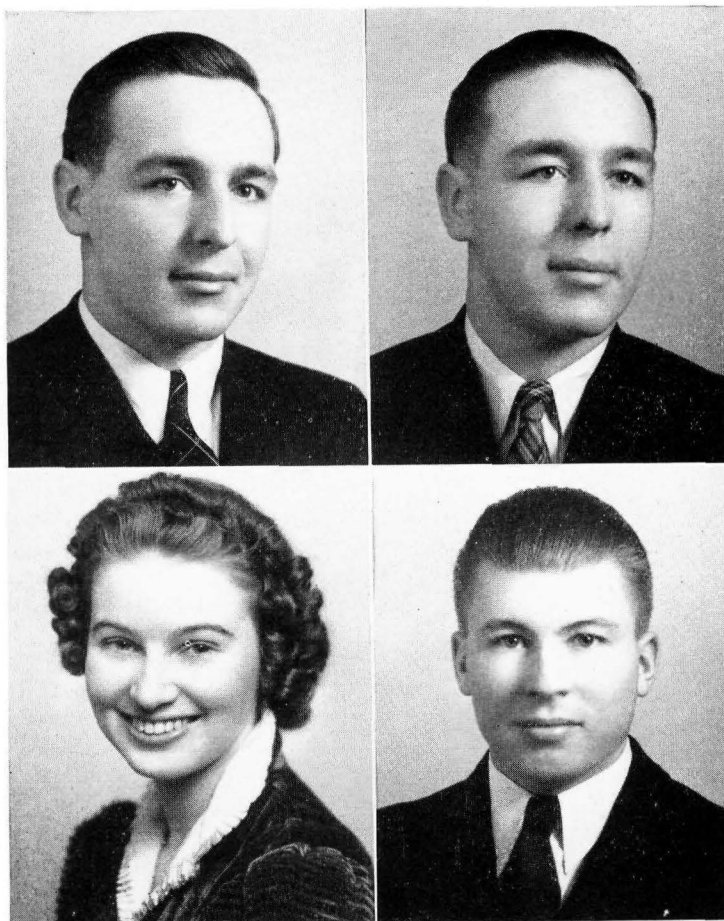
Personality plus; Pirette treasurer; *Whitworthian* news editor; Sefelo, past president; *Natsihi* associate editor; Chairman, women's conference; Muench booster; Executive Board member; a real lady.

HARLEY MOOERS

Major—Education

Minors—Economics, History, P. E.

That grin; backfield ace; golf artist; basketball; senior partner in Mooers—Miller, Inc.; tennis; honorary captain of football team in '37; "W" Club vice-president; men's conference committee.



LEONARD RICHARDSON

Major—History

Minors—Biology and Sociology

Leader; pep band; football; basketball and baseball; "W" club president; student manager of athletics; fine fellow; one-half of the Snyder Award.

NORMAN RICHARDSON

Major—History

Minors—Economics and Sociology

"Little" All-America; basketball; one-third interest in the women's trio; A. S. W. C. auditor; *Natsihi* staff; Snyder Award; a swell "Jo."

MARJORIE ROBINSON

Major—Education

Minors—English and Home Economics

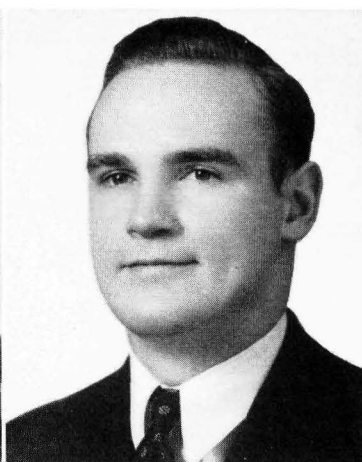
Petite teacher; orchestra; Alpha Beta and Fine Arts Club; Princess in May Festival; *Natsihi* staff in '38; W. A. A.; Sefelo; hobby: Steele.

GRANT RODKEY

Major—Biology

Minor—Chemistry

Willing worker; Philadelphians; able chemistry assistant; Volunteer Fellowship president, Whitworth Players, past president; Varsity Men's Quartet; Phi Alpha; avocation: Esther; Harvard Medical School; square shooter.



MILDRED SIMMONS

Major—English

Minor—Home Economics

Poised and pretty; Alpha Beta president; Art Club; Senior Class secretary; society editor of the *Whitworthian*; Hugh-ge interest in W. S. C.; May Queen.

GARTH STEELE

Major—Sociology

Minor—History

Parson; able fullback; C. E.; basketball; "W" Club treasurer; Philadelphians; chairman of Men's Conference; A. S. W. C. president; vice-president of his Junior Class; hobby: horseshoes; theme song: "Margie."

GERTRUDE THORNDIKE

Major—Sociology

Minor—English

Peppy; W. A. A.; active C. E.-er; favorite color: red hair; Sefelo: past president; cafeteria; Junior Class secretary.



MARY TREVITT

Major—English

Minor—Music

Demure miss; pep band; Senior Class president; Alpha Beta; A. S. W. C. secretary; Sefelo, past president; likeable first mate of the Pirettes; preference for a certain sandy-haired Scot; Alumni Ideals Award; everybody's friend.



DAN WEBSTER

Major—Biology

Minor—Chemistry

Go-getter; *Natsihi* business manager; "A" student; pep band; baseball manager; C. E. president; prefers wavy brown hair and eyes to match; loyal Alaskan.

WILLIAM WILLIAMS

Major—History

Minor—Sociology and Economics

Easygoing; *H. M. S. Pinafore*; football; basketball; and golf; Volunteer Fellowship; Faculty vs. Invincibles referee; "W" Club secretary; good mixer, versatile.



1—Lord, Buck, J. Peterson, Koper, M. Ludwig, P. Miller
 2—Barowski, G. Peterson, Bagdon, Tobie, Stanford, Peers, Mount, Kirsch, Rosenquist
 3—Pond, Bassford, Goodsell, Hughart, L. Stannard, Hanson, Muench, Wotring, Roth,
 L. Hook, Schmirler

Junior Class

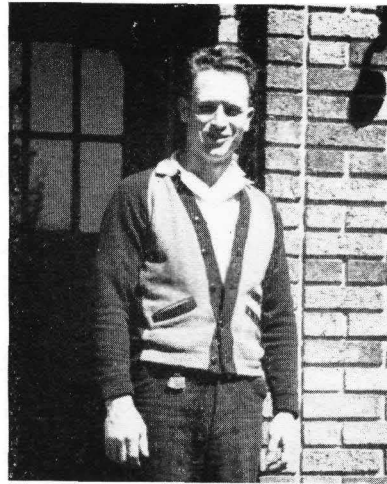
The splendid decorations for Home-coming were a testimony to the energy and initiative of the Junior Class who bedecked the campus for that occasion. The juniors continued their accomplishments in the spring by intuitively (so it seemed) tracking down the seniors on their sneak to the Bowl and Pitcher and thence to Twin Lakes. The third-classmen concluded their activities by staging a fine banquet for the seniors at the Women's Athletic Club, the theme of which was "The Roads of Life." Commencement over, the juniors will step into the vacated shoes of the outgoing seniors.

The officers of the Junior Class are: President, Bill Pond; Vice-President, Edgar Bassford; Secretary, Mary Nell Buck; Treasurer, John Roth; Social Chairman, Janice Peterson; Adviser, Dr. Bowersox.



Sophomore Class

The sophomores started off their activities with a bang this year by defeating the freshmen in the hotly contested Freshman-Sophomore Scrap. Although the second-year men were outweighed considerably, they more than made up for this deficiency in pluck and determination, and they decisively won three of the five contests.



Under the capable leadership of Dougald Robinson, the sophomores experienced a very successful year. One of the outstanding events was a Ping-pong party enjoyed by the class at the home of Evelyn Sherwin.

The class officers are: President, Dougald Robinson; Vice-President, Gladys Hawley; Secretary, Harriet Thorndike; Treasurer, Burton Sanders; Social Chairman, Evelyn Sherwin; Adviser, Professor Dizmang.



1—H. Thorndike, Hawley, Hess, Nozaki, Seidel, Johnson
 2—Coleman, Bailey, Sherwin, Thompson, E. Boughton, Sickelsteel, Joss, Swogger, Olson
 3—Fortmann, Kime, K. Hickox, Correll, Aldrich, Teeter, DeFoe, Barrow, Ferrera, Ralston, West
 4—Culp, Scarpelli, Sanders, Carman, Unti, Ross, Eaton, J. Scott, McCallum, Wollaston,
 D. Robinson, L. Rodkey



1—Bloom, D. Hickox, J. Hook, Clark, Blakemore
 2—M. Boughton, Brown, Curlee, Blumbagen, Calkins, Glover, Dollar
 3—Bates, Gleason, Carlson, Carr, Calhoun, Bowker, Heimbigner, Bunkelman, Hendrick
 4—Beatty, Fraser, Eddy, Brault, Campbell, Hoyt, Howes, DeArmand

Freshman Class



After giving a good account of themselves in the Freshman-Sophomore Battle, the green men lost to the sophomores, winning only the tug-of-war contest, in which their weight advantage was the deciding factor.

The freshmen were handicapped in their activities when their president, Curtis Butler, left college and the class was without a leader for some time. Delores Roeders was elected president at midyear.

Frosh



The social committee (working jointly with the sophomore social committee) planned to hold a picnic at Newman Lake this spring to climax its social affairs; but again Dame Fortune decreed otherwise and the affair was called off because of adverse weather conditions. Inasmuch as the freshmen experienced several unavoidable setbacks, full credit is due the officers for accomplishing as much as they did.

The present class officers are: President, Delores Roeders; Vice-President, Robert Stephey; Secretary, Verna Bunkelman; Treasurer, Howard Campbell; Social Chairman, Phyllis Nelms; Adviser, Professor Bachimont.



1—Stephey, Perry, Potter, R. Weatherly
 2—Markishtum, Richter, Jeffers, Messex, Nelms, Schoefield
 3—Sparrow, Kirkland, Rogers, Roeders, Randall, Lamparter, Montgomery, Pearson
 4—E. Ludwig, Henderson, Toole, Schell, Williamson, Nance, B. Weatherly, B. Miller

Activities

Business Meeting:

Minutes of last meeting

1. Report of Social Committee
2. Report of Auditor on

W.A.A.

Athletics

New Business

1. Read Yell King Amendment
2. Explain the student body elect.

ANNOUNCEMENTS:

Barowski (W Club Installation)

Mildred Simmons (Alpha Beta tea)

Machle (Men's Conference)

MEETINGS:

1. Volunteer Fellowship -- takes precedence over everything -- only about 10 minutes
2. Firettes -- 10 minutes
3. Junior Class -- if time left



1—Sherwin, Hawley, Simmons, Tobie, Stanford
 2—Brault, Steele, Webster, Bassford, Stephey, L. Richardson
 3—M. Boughton, G. Thorndike, Trevitt, G. Peterson, Bagdon, Mount, Roeders
 4—MacIntyre, G. Rodkey, Robinson, Beatty, Pond, Muench, Sanders, L. Rodkey,
 Machle, Blumhagen

Student Council

The student council, composed of the presidents and vice-presidents of the various organizations of the college, was piloted by Garth Steele this year. Among the various items of business transacted were a proposal to change the name of the Whitworth emblem ("Pirates") and provision for a May Day (final) issue of the *Whitworthian*.

The student council officers were as follows: President, Garth Steele; Vice-President, David MacIntyre; Secretary, Mary Trevitt; Treasurer, Norman Richardson; Representative, Evelyn Sherwin.

Social Committee

The social committee kept busy this year by seemingly trying to outdo itself in achievements. The Christmas Party, the Colonial Party, the Beefsteak Breakfast, Campus Day—all were successful events efficiently engineered by the hard-working members of this committee. Perhaps their outstanding accomplishment was the making of arrangements for the Home-coming Banquet, which was put on in grand style. Full credit is due the members of this committee, who are: Chairman (Vice-President of the A. S. W. C.), David MacIntyre; Social Chairmen of the Senior Class, Ed Machle; Junior Class, Janice Peterson; Sophomore Class, Evelyn Sherwin; Freshman Class, Phyllis Nelms.



MacIntyre, Nelms, Sherwin, J. Peterson, Machle

Alumni Ideals Award

The Alumni Association, with Charles Frazier, '38, as president, had as its chief project of the year the inception of the Alumni Ideals Award. The first student to whom this honor goes is Mary Trevitt, and her name has been engraved on the gold loving cup.

The award is based upon leadership, scholarship, religious activity, athletic interest, and service to the college.

The officers of the Alumni Association are: Elsie Ratsch Fariss, '34, Vice-President; Gyneth Chapman, '38, Acting Secretary; Keith Murray, '35, Acting Treasurer; Adeline Keyser Mott, '34, Member at Large, and Hazel Barnes, '38, Publicity Chairman.





1—G. Rodkey, Cosman, Bagdon, Hughart
2—Miss Jenkins, Miss Logerstrom, Dr. Bowersox, Dr. Hedrick

Phi Alpha

The petite Miss Logerstrom is the president of this wise and learned brain clique of the Whitworth campus. The membership is small, but the intelligence is gigantic. The activities for the past year have been two chapel programs at which time the permanent and associate student members were installed, and an informal banquet in the dining room at Culmstock Arms. Blair Cosman is the secretary of the organization.



E. Boughton, Trevitt, Nozaki, P. Miller, J. Peterson, Bagdon, Minnich, Hawley, Sherwin,
Koper, Miss Jenkins

Pirettes

The Pirette Club is an honorary service organization. This year the group has been unusually small, composed of only ten outstanding sophomore, junior, or senior women. The members are proud of their striking new uniforms, which have helped in promoting pep and enthusiasm among the students during the fall sports season and the Home-coming banquet. Captain Harriet Bagdon, with her adviser and crew, has had a very successful year. The social calendar included assistance in the organization of Freshman Week, a formal initiation in chapel of the six new members, the annual fireside, a breakfast, and the presentation of the basketball award. Officers are: Harriet Bagdon, President; Mary Trevitt, First Mate; Mary Koper, Second Mate, and Marian Minnich, Purser.



1—Cosman, Bagdon, Calhoun, Montgomery, Carr, Kassens, Barrow, Mr. Uhe
2—Roth, Machle, M. Ludwig, Buck, Williamson, Eaton, Nance, Koper, Hughart

Art Club

Whitworth College Art Club is composed of students interested in furthering their knowledge of the Fine Arts. During the college year two concerts were sponsored by this organization—Blair Cosman's piano recital and the Quintet concert.

Officers of the Art Club are: Blair Cosman, President; Ed Machle, Vice-President; Eleanor Barrow, Secretary; Virginia-Lee Nance, Treasurer. A. E. Uhe is Faculty Adviser.



QUINTET
Cosman, ^(Maude)
Goodsell, McCannon,
Koper, Messex



WOMEN'S TRIO
Kessey, J. Peterson,
Hawley

Quintet

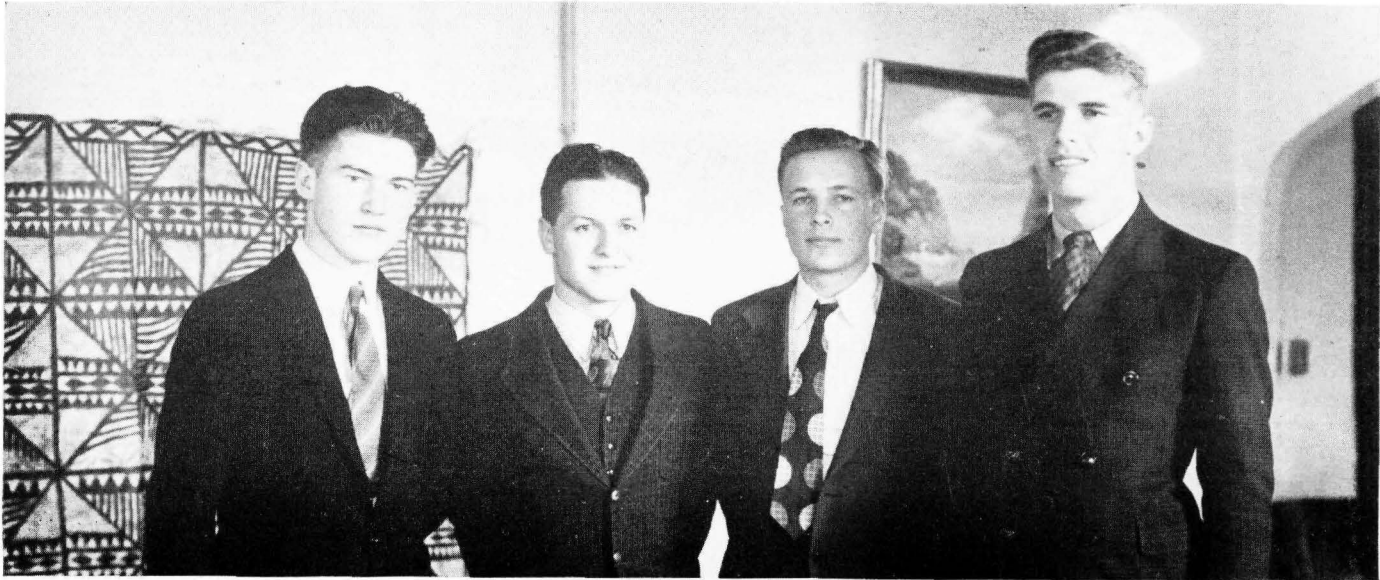
The most widely known of the Whitworth musical groups this year was the Quintet, which was composed of a mixed quartet and a piano accompanist. Members of the Quintet included: Mary Koper, soprano; Maude McCannon, contralto; Lewis Messex, tenor; James Goodsell, bass; Blair Cosman, piano. All of these students are also outstanding soloists. The Quintet made an extended tour of Coast cities this spring, appearing 103 times before church, school, and social groups.

Women's Trio

One of the popular musical groups at Whitworth has been the Women's Trio. Not only did they present concerts in Spokane and the Inland Empire, but also made a trip to the Coast. In all, the Trio made 49 public appearances. Members are: Gladys Hawley, soprano; Janice Peterson, contralto; and Virginia Kessey, second soprano. Miss Kessey, a member of the Freshman Class, replaced Mary Koper in the Trio personnel.

Men's Quartet

A new musical group, the Men's Quartet, has proved to be an asset to the Whitworth Music Department. Composed entirely of freshman men, this group made a total of twenty public appearances in eastern Washington, Idaho, and western Montana. Members of the quartet are: Robert Jeffers, first tenor; Wesley Scott, second tenor; Dean Hickox, first bass; Howard Hendrick, second bass.



D. Hickox, Jeffers, W. Scott, Hendrick

Orchestra and Band

Under the direction of A. E. Uhe, the band and the orchestra made a noticeable improvement during the year. The orchestra appeared several times in public, either as a unit, or in various combinations.

The band, with Stanley Hughart as student leader, did much in giving college spirit a boost. High light of the year was the trip made by the band with the football team to the Cheney game.

Plans have already been made for these two groups to continue next year on the foundation which has been laid during the last nine months.



1—Brault, Smith, Sanders, Buck, Blaisdell, Sickelsteel, Hoyt, Eaton, Bagdon
2—Bunkleman, Cosman, Clark, Campbell, Beatty, Howes, Perry, Hanford, Brown



- 1—Montgomery, Mount, Bowker, Thompson, Nelms, McCannon, Barrow, Koper, Roeders, Nance, Johnson, Gleason
- 2—Bates, P. Miller, Kessey, B. Miller, Henderson, Messex, D. Hickox, Hawley, J. Peterson, Carlson, Joss, Scholfield, Carter
- 3—L. Richardson, Wolfe, Correll, Blaisdell, Eaton, Jeffers, Hendrick, J. Hook, N. Richardson, Rosenquist, Goodsell, Pond, Kirsch, Cosman

Whitworthian Choir



Whitworthian Choir

Known this year as the Whitworthian Choir, the college chorus made a number of public appearances under the direction of Winifred McNair Hopkins. In December, the chorus made an extensive tour of the central and eastern sections of Washington, presenting Handel's sacred oratorio, "The Messiah," to appreciative audiences. During the Easter season, music from Stainer's "Crucifixion" was presented locally. In addition, the chorus assisted in many other musical enterprises of the Inland Empire, and took an important part in the production of Balfe's opera, "The Bohemian Girl."

Philadelphians

The Philadelphians are an organization, founded in 1929, composed of men who plan to engage in full-time Christian service. Members participate in chapel programs and deputation team-work, and endeavor to promote a Christian atmosphere on the campus. The Philadelphians cooperated with the "W" Club in the work of the Men's Conference.

The activities of the year were brought to a climax with a picnic held at Loon Lake, which also included the present auxiliary.

The officers for the year were: President, Eugene Muench; Vice-President, Edward Machle; Secretary-Treasurer, Ray Wotring, and Faculty Adviser, Dr. J. W. Countermine.

Christian Endeavor

The students of the dormitories and those living near the campus participated in the activities of our Christian Endeavor. A special chapel service, with Mr. and Mrs. Luther Plankenhorn conducting, was a special feature in commemorating the anniversary of the founding of C. E. A Gospel team was sent to Sprague, and a radio program in connection with the Volunteer Fellowship was given. One of the C. E. signboards in Spokane was sponsored by our society, and we sent a gift at Christmas time to one of the Presbyterian home missions. A mission-study class under the leadership of Mrs. F. T. Hardwick was enthusiastically attended by many of the members. This was followed later by a personal workers' class led by Eugene Muench. Two parties were held during the year, at which everyone had a good time.

The officers for the year were: President, Lee Rodkey; Vice-President, Marjorie Boughton, and Secretary-Treasurer, LeRoy Hook. The chairmen of the different committees were: prayer meeting, Burton Sanders; missionary, Harriet Thorndike; recreation, Francis Unti; lookout, Marjorie Boughton, and music, Dorathea Teeter. Our adviser was Miss Marion R. Jenkins.



PHILADELPHIANS

- 1—Bailey, G. Rodkey, Correll, Wolfe
2—Sparrow, Muench, Howes, Steele, Beatty,
Blumhagen, DeArmand
3—Campbell, Wotring



CHRISTIAN ENDEAVOR

- 1—Hess, H. Thorndike, M. Boughton, Brown, B. Weatherly,
B. Miller
2—Pond, Carter, G. Thorndike, Trevitt, Minnich, Bunkelman,
Lamparter, Henderson, Lord, Kassens, Eaton
3—L. Hook, Bassford, Heimbigner, D. Robinson, Unti, Bunker,
Hendrick, E. Boughton, DeFoe, Mount, Cosman, G. Rodkey
4—Wotring, Miss Jenkins, Kime, Teeter, Nance, G. Peterson, Brault,
L. Richardson, J. Peterson, N. Richardson, Aldrich
5—Swogger, Muench, Sanders, Beatty, Webster, Markishtum,
Wolfe, Blumhagen, L. Rodkey, Blaisdell

Volunteer Fellowship

The Volunteer Fellowship had as its officers for the year: President, Grant Rodkey; Vice-President, Burton Sanders; Secretary, Gertrude Thorndike, and Treasurer, Dougald Robinson.

Speakers conducted meetings in the city; devotional teams were sent to the out-lying cities, Rathdrum and Opportunity; a recreational team took charge of an evening of enjoyment; a fifteen-minute radio program was conducted in conjunction with the Whitworth C. E.; a group helped with the Almira C. E. Convention; a week-end conference was conducted at Kellogg; chapel programs were planned throughout the year, and the Fellowship assisted in planning Religious Emphasis Week. A retreat was held one Sunday afternoon at the First Presbyterian Church.

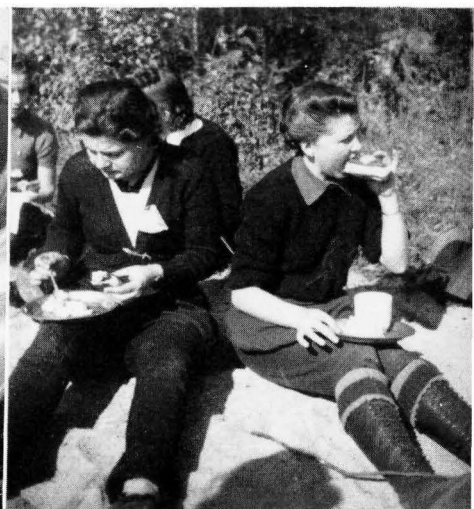
The annual picnic was held at Loon Lake.

Dr. Paul Calhoun, of the First Presbyterian Church of the city, was our speaker for Religious Emphasis Week. Besides speaking in chapel every morning, Dr. Calhoun conducted conferences in the afternoons in which students problems were discussed. An impressive communion service was held on Wednesday evening of that week.



1—Johnson, Buck, H. Thorndike, Koper, Brown, M. Boughton, Bunkelman
 2—Campbell, Schmirler, Robinson, Steele, Kime, G. Rodkey, Blaisdell, Blumbhagen, Wolfe, Unti
 3—M. Ludwig, G. Peterson, Trevitt, Nance, Minnich, J. Peterson, Aldrich, Mount, Teeter,
 Kassens, E. Boughton, Carr, G. Thorndike, D. Hickox
 4—Roth, Dr. Hardwick, Wotring, Sanders, Muench, Machle, L. Rodkey, Howes, Beatty,
 Webster, Correll, Ross

Women's Conference



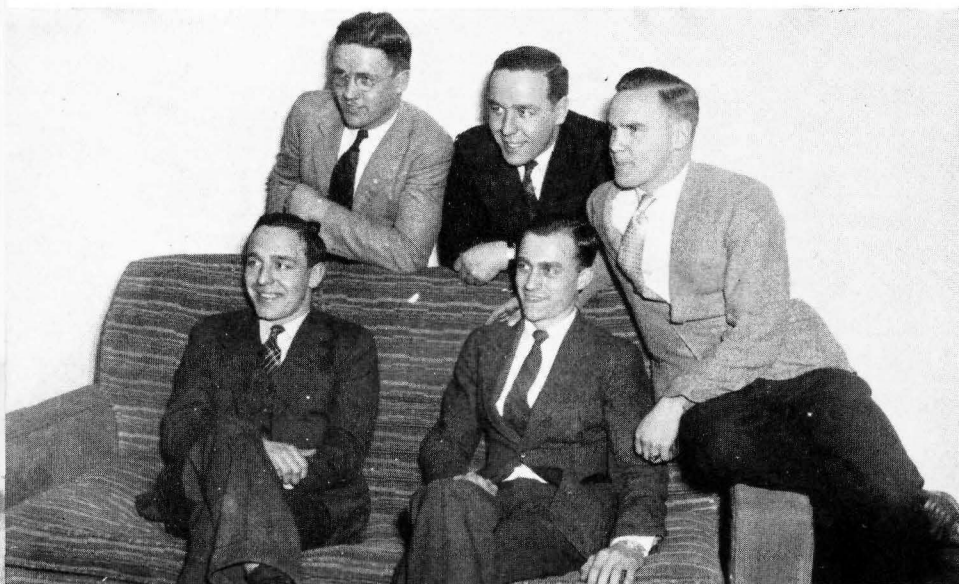
Camp Cowles on beautiful Diamond Lake became the haven of the women for the week end of October 21-23. In the beauty and quietness they spent hours which they will never forget. Exploring the surrounding woods and rocky shores; boating on the placid waters; lying lazily basking in the sun; chatting round the fireside; swimming, enjoyed by the brave few; sleeping and awakening to sounds in the night; reveling in food prepared by Mrs. Davidson, our cook—everyone found something of interest to do.

Those who guided our thoughts were: Mrs. Claire Grieve, who made us think deeply concerning Bible truths; Mrs. Lillian Plankenhorn, who smiled her way into the heart of every girl; our own "Mommie" Jenkins, who is always ready to listen; Mrs. Anna Carrel, who gave us a challenge in her fireside chat, and Mrs. Hedrick and Miss Baldwin, who were always ready to assist the girls in any way possible.

Preparations were in charge of: General chairman, Marian Minnich; program and music, Mary Koper; secretary, Harriet Thorndike; commissary, Mary Trevitt; registration, Dorathea Teeter; transportation, Gertrude Thorndike; recreation, Mary Nell Buck, and decorations, Gladys Peterson.



Men's Conference



The "W" Club had a very good turnout for the Men's conference held at Camp Cowles on Diamond Lake, April 21-23.

Swimming, boating, and a rousing game of ball were the sports enjoyed. It seems that during the night antiphonal interpreting was a source of great enjoyment.

The men were privileged in having excellent speakers. Mr. James Forrester of Vancouver, British Columbia, an up-and-coming Christian leader of Canada, is in very great demand for this type of work. Dr. Robert Grieve of Spokane, who leaves for the mission fields in Africa soon; the Rev. G. L. Liening, of Spokane; and the Rev. Boyce Van Osdel, of Opportunity, also helped the men straighten out their problems.

The preliminary work was taken care of by: Garth Steele, general chairman; Eugene Muench, program; Bill Pond, music; Leonard Richardson, promotional; Norman Richardson, recreation; Francis Unti, property; Louis Stannard, work, and Howard Campbell, transportation. Mr. Philip Wilson, assisted by Dougald Robinson, saw to it that the men didn't starve.



Alpha Chi

The dorm men's organization at Whitworth Hall has been during the past year under the quarterly management of Blair Cosman, Edward Machle, LeRoy Hook, Burton Sanders, and the resident adviser, Professor Carlson. The semester secretaries were Burton Sanders and Edgar Bassford; the treasurers were LeRoy Hook and Eugene Muench. Alpha Chi controls the social life in the dorm. The outstanding activities were the Christmas Party and the annual Men's Open Dorm.

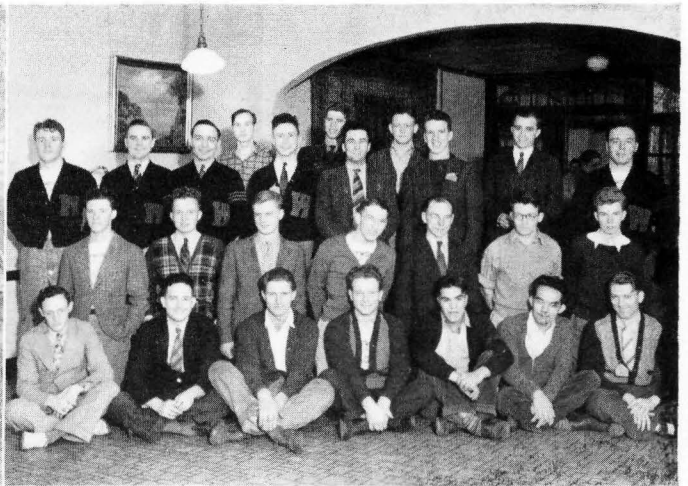
Sefelo

Sefelo is the women's exclusive dormitory society. It is an organization which creates harmonious spirit of friendship and comradeship so necessary to dorm life. Its social events included Women's Open Dorm, Women's Christmas Party, Heart-Sister Week, Mothers' Tea, and the monthly birthday banquets in cooperation with Alpha Chi. The officers for the first semester were: Gertrude Thorndike, President; Harriet Bagdon, Vice-President; Ruth Brown, Secretary; Marjorie Boughton, Treasurer; Marian Minnich, Social Chairman. Second semester officers were: Gladys Peterson, President; Verna Bunkelman, Vice-President; Barbara Miller, Secretary; Beatrice Henderson, Treasurer, and Angelina Ferrera, Social Chairman.



SEFELO

- 1—Hess, H. Thorndike, M. Boughton, Brown,
E. Boughton, B. Miller
- 2—Trevitt, Minnich, Bunkelman, Lamparter, Henderson,
Lord, Kassens
- 3—G. Thorndike, Carter, Bagdon, Bunker, G. Peterson,
Smith, DeFoe, Aldrich
- 4—Mount, Miss Jenkins, Heimbigner, Nance, Ferrera,
Mrs. Carrel



ALPHA CHI

- 1—Kime, Machle, Bechler, D. Robinson, Markishtum,
Edenso, Stephey
- 2—Eaton, Beatty, Brault, Webster, Roth, Swogger,
Hanford
- 3—Bassford, Steele, L. Richardson, Potter, L. Hook,
Hendrick, Blaisdell, J. Hook, Sanders, Muench,
N. Richardson

MODERN LANGUAGE CLUB

- 1—Roth, Robinson, Stanford, Kirkland, Roeders,
J. Scott, G. Rodkey
2—Hawley, J. Peterson, Williamson, Seidel, Tobie,
Toole, Peers, Carlson
3—Sherwin, G. Peterson, B. Miller, Hess, Mount, Bunkelman,
Mrs. Bachimont, DeFoe, Mr. Bachimont
4—Eddy, Swagger, L. Rodkey, Sanders, Potter, Richter,
Hoyt, Blaisdell, D. Hickox

MONTANA CLUB

Unti, Buck, Lord, Carter, MacIntyre, Bassford,
Mount, Steele



Modern Language Club

The French Club and the German Club are the organizations of the linguists of Whitworth College. Under the guidance of Professor Bachimont, the adviser, the polyglottists have had several enjoyable socials and meetings. The purpose of the club is to create an interest in foreign culture, literature, and civilization which will add greater zest to class discussions and recitations. Evelyn Sherwin is president of the French Club, and John Roth is president of the German Club.

Montana Club

The student body of Whitworth College is spotted with several rugged Montanans. The four men and four women who compose this group enjoyed a wiener roast and a rollicking snowball fight during the past winter. The cabinet includes Mary Virginia Mount, President; Edgar Bassford, Vice-President, and Mary Nell Buck, Secretary-Treasurer. The three business-social meetings were under the direction of the adviser, Mrs. Peck.



1—Schell, G. Thorndike, Bunker, Nelms, Scholfield, P. Miller, M. Boughton, Brown
 2—Aldrich, Thompson, Joss, Gleason, Bates, Trevitt, G. Peterson, Lord, Lamparter
 3—Heimbigner, Rogers, H. Thorndike, E. Boughton, Nozaki, McCallum, Fay, Nance,
 Miss Logerstrom
 4—Hawley, Simmons, Ferrera, Henderson

Alpha Beta

The future "homemakers" have had a very busy, but enjoyable, year. "The best in life" club is composed of women who have taken at least one semester of home economics. Under the capable leadership of the president, Mildred Simmons, Alpha Beta has been able to carry out its program satisfactorily. The money-making projects were three all-Whitworth roller-skating parties and the sale of Christmas cards. Alpha Beta sponsored an interesting chapel program, with Mrs. Harry Davenport as speaker. The social calendar included two initiations, a formal installation of new officers, a Christmas party for the orphans at the Washington Children's Home, and a formal dinner. The club is also presenting a gift to the Home Economics Building. The other officers are: Vice-President, Pauline Miller; Secretary, Tami Nozaki; Treasurer, Harriet Thorndike, and Sergeant-at-Arms, Arline Fay. Miss Logerstrom is the club adviser.



1—Bunkelman, Miss McLeod, Nelms, Kessey, P. Miller, G. Peterson
 2—Bailey, Chatterton, McCallum, B. Miller, R. Weatherly, Blaisdell
 3—Swogger, Muench, Eaton, Unti, Sanders, Potter, D. Hickox, Schmirler, G. Rodkey

Whitworth Players

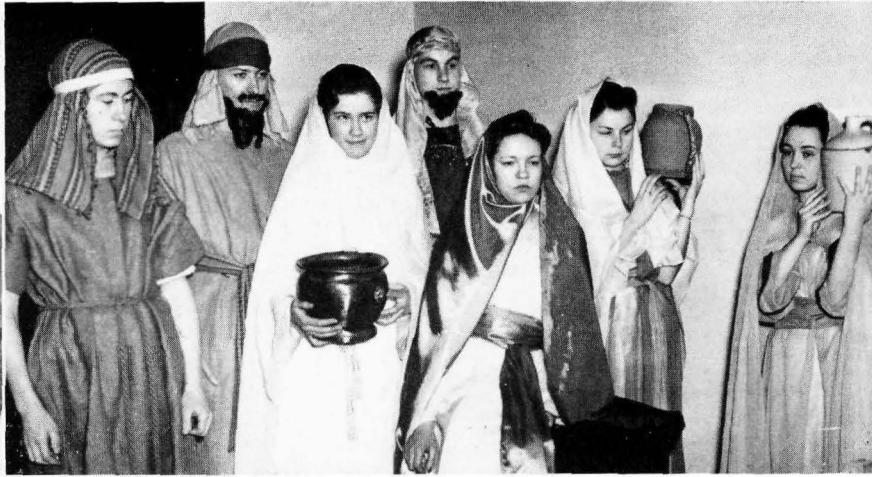
The Whitworth Players were busy with activities from start to finish this year. They began by producing *The Royal Family* as their Homecoming play. In December they put on the colorful Christmas play, *They Who Sit in Darkness*, and followed this up with the well-known play of Wilde's, *The Importance of Being Earnest*. The Easter play, *The Resurrection*, was a great success; and the Players concluded their achievements with an excellent missionary play, *The Color Line*.

The outgoing officers are: President, Grant Rodkey; Vice-President, Pauline Miller; Secretary, Joy McCallum; Treasurer, Lowell Poore; Director, Miss Isabelle Carolyn McLeod.

The newly elected officers are: President, Pauline Miller; Vice-President, Barbara Miller; Secretary, Virginia Kessey; Treasurer, Don Schmirler; Director, Miss Isabelle Carolyn McLeod.



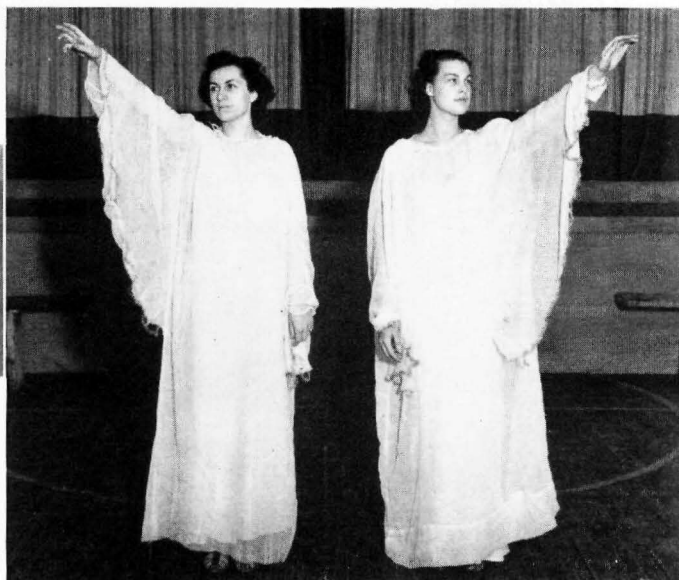
Hickox, Nelms, Eaton, Dollar
THE IMPORTANCE OF BEING EARNEST



L. Hook, Stephey, Bunkelman, Potter, B. Miller, Aldrich, Brown
THEY WHO SIT IN DARKNESS

THE RESURRECTION
Petsch, Sherwin, P. Miller, B. Miller, B. Weatherly





THE RESURRECTION

Debate

Whitworth tyro orators participated in several contests this year, each time giving a good account of themselves. They entered the Northwestern Debate Tournament, held at the College of Puget Sound, and won two out of six debates. They entertained the College of St. Mary's forensic team here at Whitworth in a non-decision contest.

The members of the team are Milton DeArmand, manager, and Stewart Sparrow. The coach is Dr. LaVerne K. Bowersox.



Sparrow, DeArmand

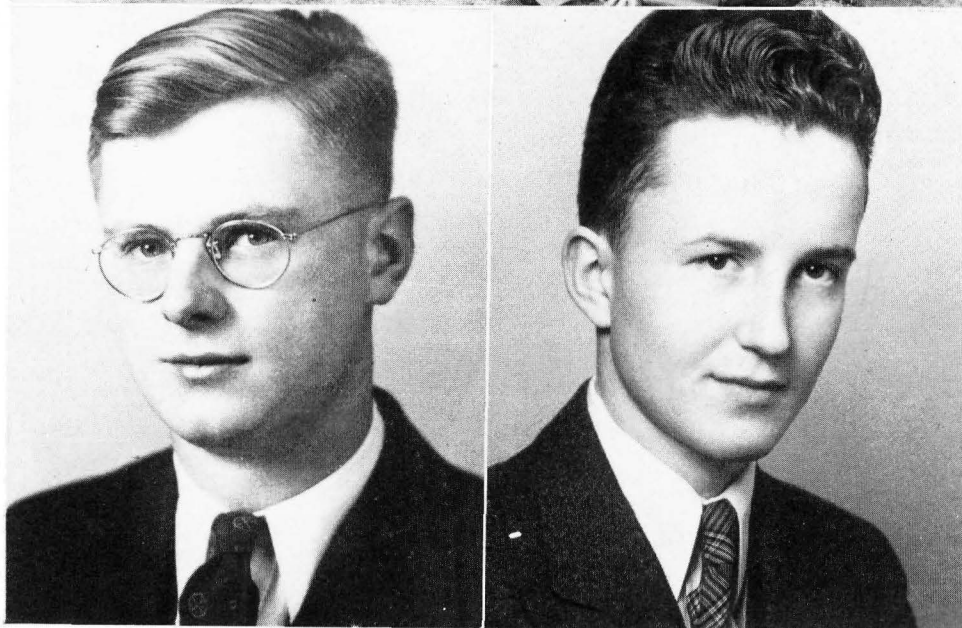


1—Kessey, Miss Magill, P. Peterson, Tobie, Coleman
2—Beatty, J. Peterson, Stephey, Bailey

Natsihi

The *Natsihi* staff of 1939, with Mary Virginia Mount at the head, put forth great efforts in order to produce a yearbook which would even surpass the traditionally excellent former annuals of Whitworth. Better pictures—especially action snapshots—and more of them is one of the outstanding features of the 1939 annual.

Members of the 1939 editorial staff are: Editor, Mary Virginia Mount; Assistant Editor, Douglas Coleman; Art Editor, Janice Peterson; Sports Editor, Robert Barowski; Women's Sports Editor, Martha Lee Tobie; Snapshot Editor, Robert Stephey; Assistant Snapshot Editor, Malcolm Swogger; Copyreaders, Bruce Beatty and Virginia Kessey; Social Organizations, Tami Nozaki; Religious Organizations, Gladys Peterson.



1—Tobie, Seidel, J. Peterson, Randall, Nance
 2—Beatty, Kessey, Brault, Swogger, Glover
 3—Miss Magill, Stephey, D. Hickox, Coleman, Blumhagen

Whitworthian

As the businesslike hum of the presses died away on the evening of May 4, the final edition of the *Whitworthian* was printed, and Bruce Beatty breathed a sigh of mingled relief and satisfaction at having completed his job as the 1938-39 editor of the college paper. Bruce concludes a very successful year in this capacity and deserves full recognition for his faithful services to the college in this all-important position. Because of financial limitations, the staff was able to publish only three issues of the *Whitworthian* during the fall semester, and a final edition on May 5 in joint honor of May Day and the graduates of the class of '39.

The members of this year's *Whitworthian* editorial staff are: Editor, Bruce Beatty; Associate Editor, Virginia Kessey; Feature Editor, Blair Glover; Sports Editor, Ed Bassford; Women's Sports, Martha Lee Tobie; Columnist, Robert Stephey; Society Editor, Betty Ferrell; Club Editor, Marjorie Seidel; Copy Reader, Virginia-Lee Nance; Reporters, Members of the Journalism Class.

The business staff includes: Business Manager, Robert Brault; Advertising Manager, Dean Hickox; Circulation Manager, Malcolm Swogger.



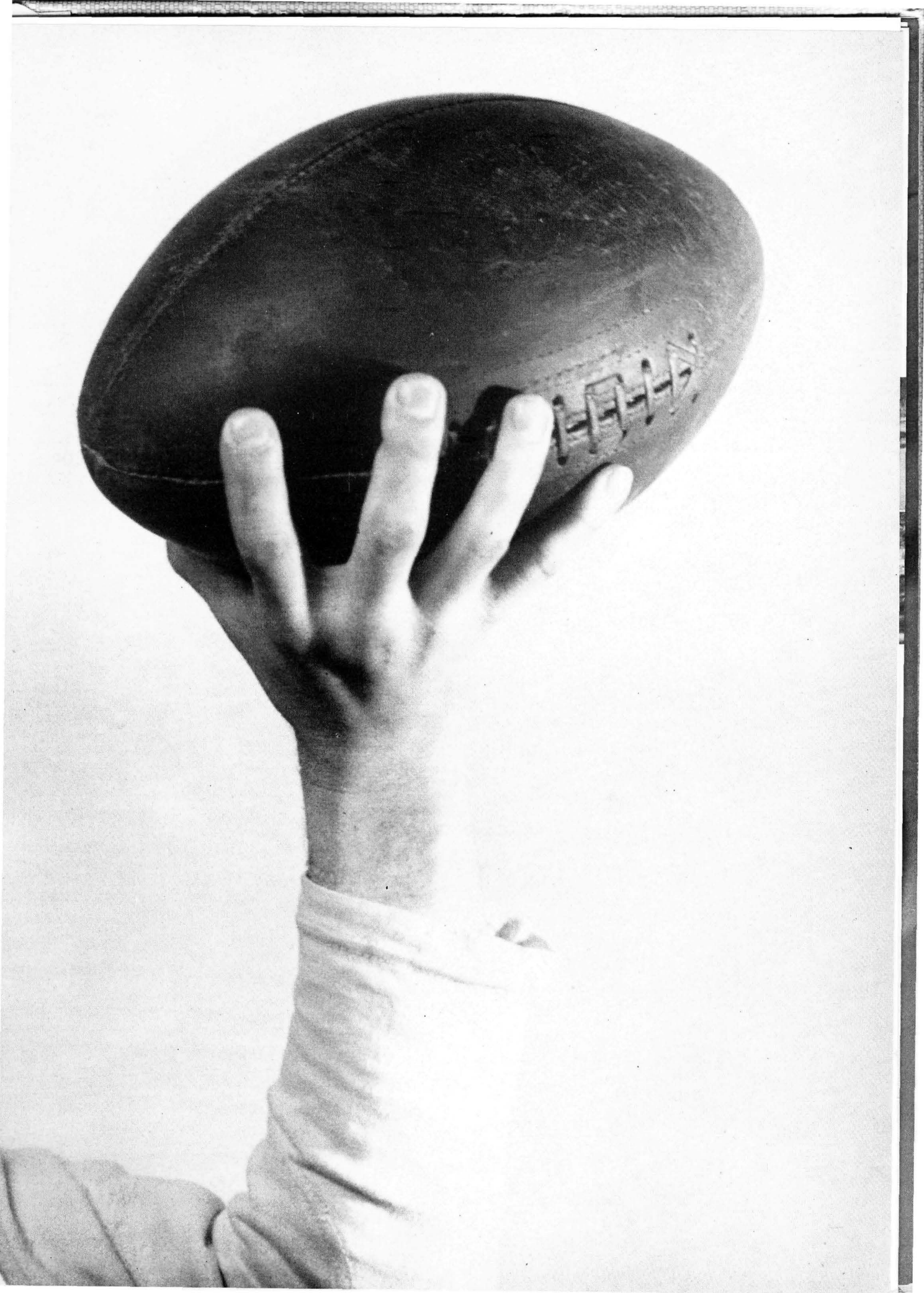
Queen Mildred I



1—McCallum, Hawley
2—J. Peterson, Sherwin, P. Miller

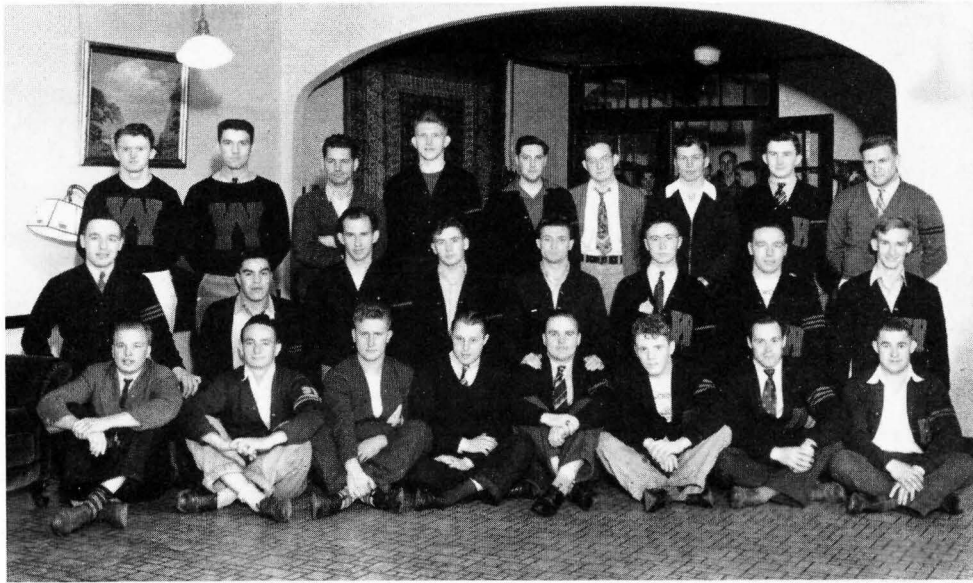
May Princesses

Sports



Coach

Gerald Stannard, our coach, deserves much credit for directing Whitworth through the most successful sports season in the history of the college. Year after year, he has been building better teams, better morale, better men. And this has been a banner year: a winning football team, a fighting basketball team, and definitely improved golf and tennis teams—these results speak for themselves and for Coach Stannard. His coaching ability, his love of sport, and especially his warm, generous personality—these traits have endeared Coach Stannard to his men and to all the students and friends of Whitworth College.



1—W. Scott, Curlee, Bland, Rosenquist, Steel, Bassford, Mooers, Kirsch
 2—L. Richardson, Markishtum, Olson, Carman, Fisher, L. Hook, N. Richardson, Colpitts
 3—Wollaston, Randolph, Ralston, Blakemore, Scarpelli, Unti, Pond, MacIntyre, L. Stannard

The "W" Club

The "W" Club, the men's sports letter organization, enjoyed a busy year. As is traditional, the Club initiated the freshmen, sponsored the Men's Conference, and were active in college affairs. A carnival and Faculty-Invincible basketball games were held to raise money to advance the sports program of the college. The Club is comprised of major-letter winners, and its principal aim is to promote athletics. Its officers for the past year were: Leonard Richardson, President; Harley Mooers, Vice-President, and Lewis Kirsch, Treasurer. Dr. Leslie Hedrick was the adviser.



THE RECORD

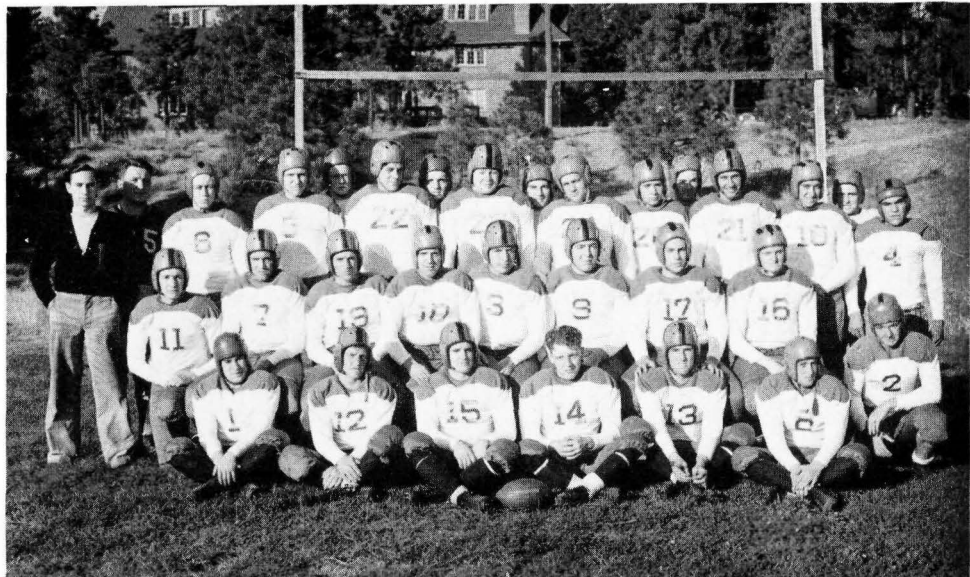
Whitworth.....	7	Lewiston	0
Whitworth.....	8	Whitman	7
Whitworth.....	0	Lewiston	10
Whitworth.....	0	Cheney	12
Whitworth.....	13	Montana S. of M.	7
Whitworth.....	32	Carroll	0



Unti, Larry, E. Boughton

Yell Leaders

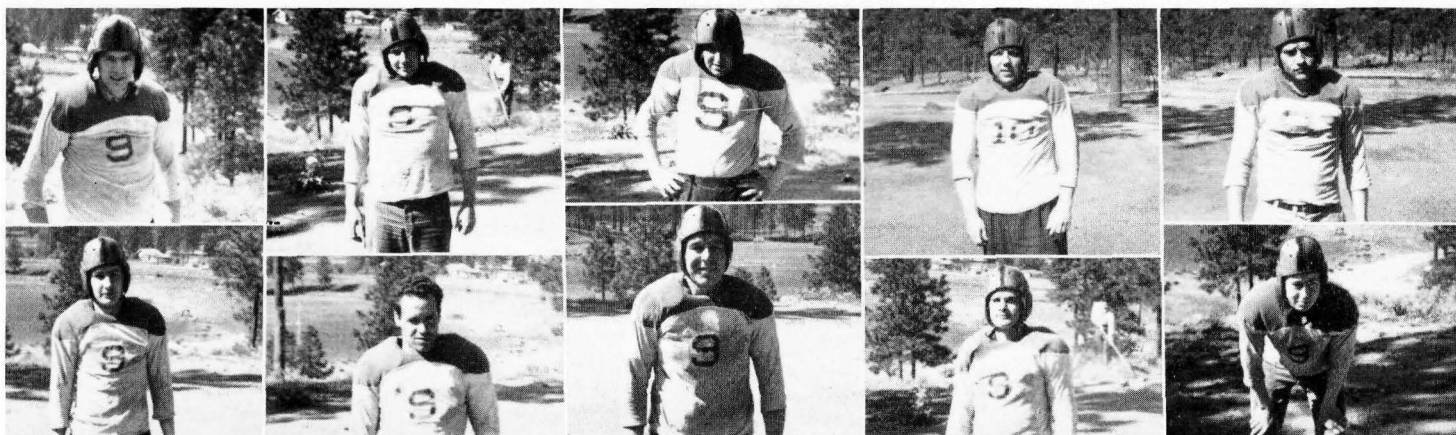
"Pinky" Unti and Ethel Boughton, two peppy cheer leaders, played a big part in manufacturing enthusiasm and support for the various teams.



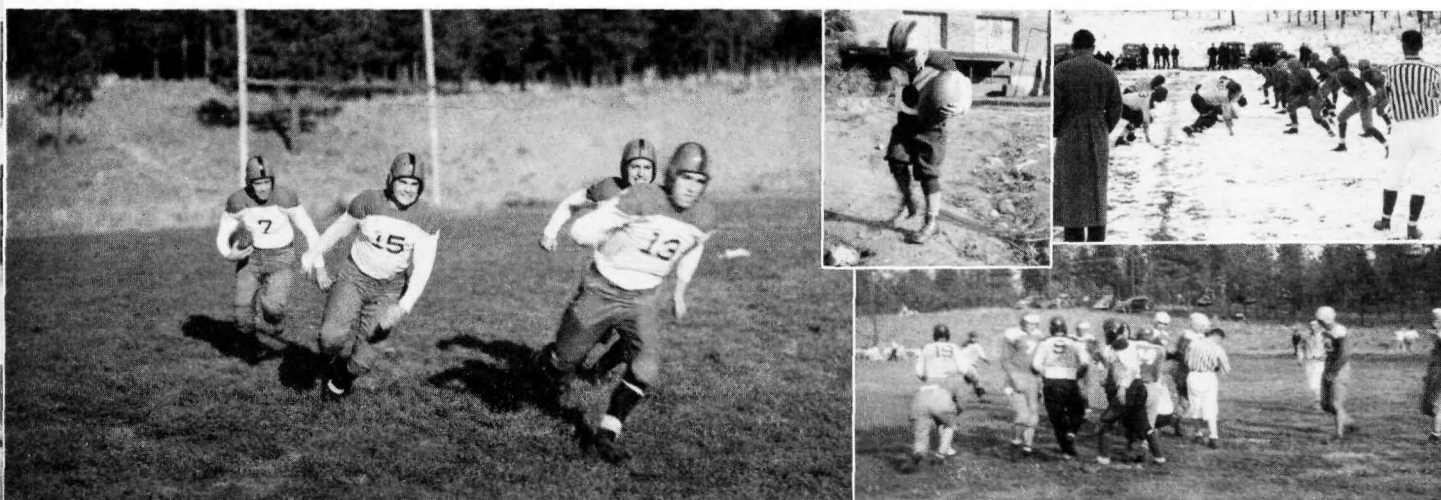
- 1—Kirsch, Earl, Steele, Bassford, Randolph, Scarpelli, Curlee
 2—MacIntyre, Mooers, Ralston, Barowski, L. Richardson, N. Richardson, Holms, Wollaston
 3—Miles, G. Stannard, L. Hook, Blakemore, Lissey, Holter, L. Stannard, Carman, Olson,
 Tanneberg, Markishtum
 4—J. Hook, Campbell, Chatterton, Wotring, Blumhagen



Bottom: Kirsch, L. Stannard, Blakemore, Curlee
Center: L. Richardson, Olson, Tanneberg, Ralston, Jeffers
Top: Bassford, Olson, Markishtum, Wollaston



*Bottom: MacIntyre, Mooers, N. Richardson, Steele, L. Hook
 Top: Culp, Carman, Scarpelli, Barowski, Ralston*



BAROWSKI—Bumps 'em hard.

BASSFORD—Enthusiastic and loves it.

BLAKEMORE—Frosh with unlimited possibilities.

CAMPBELL—Hard-plugging Frosh.

CARMAN—Pass receiver.

CULP—Green but willing.

CURLEE—Another fighter.

EARL—Mighty mite.

HOLMS—Hard fighter.

HOLTER—Liked them tough.

HOOK—Determined Junior.

KIRSCH—Likes to rock 'em.



MARKISHTUM—Improved plenty.

MACINTYRE—Deceptive runner.

MOOERS—The brains and Co-cap. Plenty sweet.

OLSON—Heads-up flank man.

RALSTON—A Rambler.

RANDOLPH—"Look out"—T. N. T.

RICHARDSON, L.—Co-cap. Aggressive spark plug.

RICHARDSON, N.—Little All-American. Co-cap.

SCARPELLI—A scrapper who can take it.

STANNARD—Stellar Snider Award winner.

STEELE—Steady Senior speedster.

TANNEBERG—Triple threat.

WOLLASTON—Eats it up.



The Football Season

Coach Stannard had twelve returning lettermen and some promising new material from which to build a team this year. And the outcome was the best squad that Whitworth has ever had.

On September 22, Whitworth opened the season with a sparkling 7-0 victory over Lewiston Normal. Whitworth had power to burn, and pushed Lewiston all over the field. Although this was the first game, the team exhibited mid-season form. Mooers went over for the season's first touchdown.

On September 30, Whitworth traveled to Walla Walla to defeat the Missionaries in a thrilling game. Some of the high lights were a pass interception by Louie Stannard and the scoring of a safety in the last few minutes. The final score was 8-7.

The next game was a tough one, a return game with Lewiston Normal at Lewiston. The Lewiston team played inspired ball to defeat Whitworth 10-0, and gain revenge for Whitworth's previous win.

Then came Cheney Normal, always a big and tough team. Whitworth waged a valiant battle featured by spectacular pass-receiving by Mooers and Olson, but lost the game 12-0.

The next game was with Montana School of Mines at Butte; it was on an icy field that Whitworth came back to win by the score of 13-7. The feature of the game was a beautiful touchdown pass from Tanneberg to Olson.

The Home-coming game was played on a snow-covered field. Whitworth was out for business, to make Home-coming a complete success. The result was: Whitworth 32, Carroll 0.

And so we see the final result. Whitworth won four games, losing only two. The team played excellent ball the entire season, and was the underdog in every game, yet came out on top four times.



Golf Team

The golf team includes: Kenny Randolph, No. 1; Harley Mooers, No. 2; Bill Williams, No. 3; Jack Wollaston, No. 4; Bob Chatterton, No. 5; Lewis Messex, No. 6; and Dave MacIntyre, No. 7. Because of the early date at which the *Natsihi* is published, it is impossible to give the result of the tournaments. But the golf team shapes up as the best potential squad in the history of the college.

Tennis Team

The tennis team is composed of: Wesley Scott, No. 1; Mel Blakemore, No. 2; Bob Barowski, No. 3; Bill Richter, No. 4; and Lee Rodkey, No. 5. Positions No. 6 and No. 7 were held by Harley Mooers and Jack Wollaston, respectively.

The Whitworth Tennis Team, consisting of Wesley Scott, Milburn Blakemore, Bob Barowski, Bill Richter, and Lee Rodkey, took a four-day trip to the coast to encounter four institutions of higher learning. Whitworth defeated the College of Puget Sound and Pacific Lutheran College. They were defeated by Ellensburg Normal and the University of Washington Frosh. Concerning individual performances during the trip, Scott, Blakemore, and Barowski won three matches each; Richter and Rodkey, one each. Other matches are to be played at home. The team looks very promising for the future, inasmuch as none of the players will be lost by graduation.



Little All-American

In January, Norman Richardson, stellar lineman of the Whitworth grid squad during the last four seasons, was honored by being named to the Williamson Little All-American first team. With no previous announcement, Richardson received a statuette and certificate which revealed to him the high honor which he had received.

Richardson was the only player west of the Mississippi River to be honored with a position on the first team. Although the team is called "Little" All-American, the implication is not that the gridders aren't just as good as those on the All-American; it means that they come from small colleges.

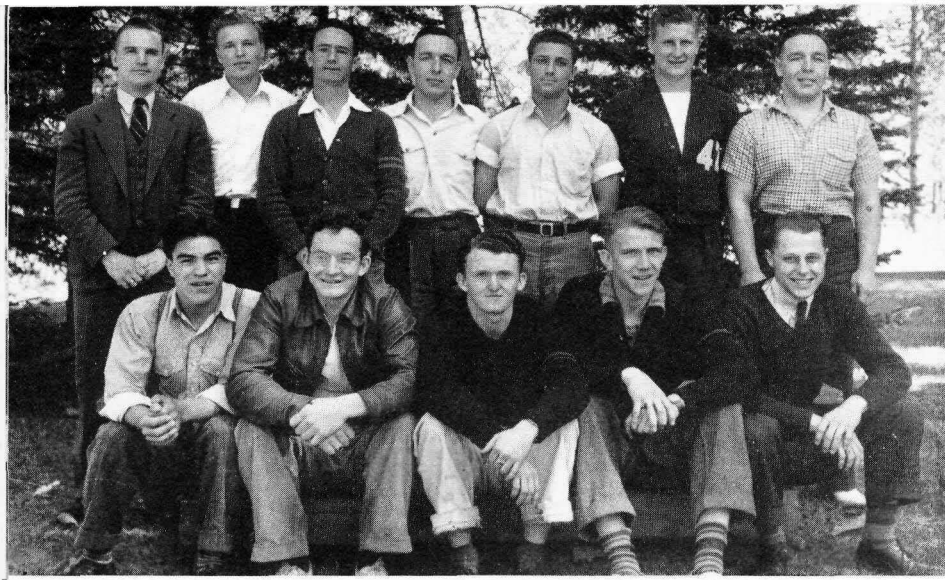


G. Stannard, L. Stannard, Murray

The Snider Award *Louie Stannard*

The Snider Inspirational Award was voted by the team to Louie Stannard, rugged center. Louie was always in on every play, fighting, busy, yet he always had time to pat his teammates on the back and encourage them to keep on fighting too. Besides his excellent centering, Louie backed up the line and intercepted passes. Just an all-around ball player.

The honorary captainship vote ended in a three-way tie. The two Richardsons, stalwart guards, and Harley Mooers, triple-threater par excellence, shared this honor.

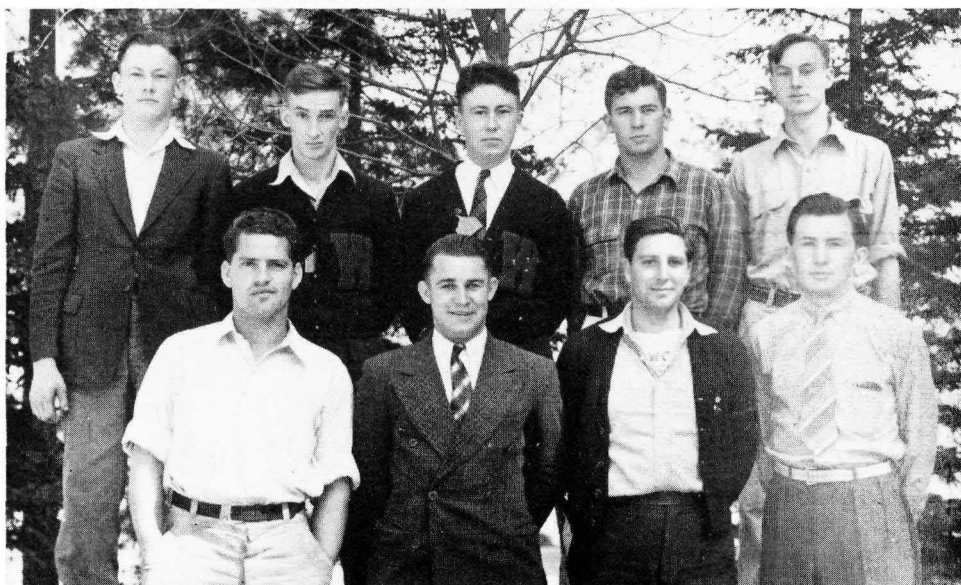


1—Markishtum, Unti,
Wollaston, Blakemore,
Rosenquist

2—Steel, Scott, Curlee,
L. Richardson, Fisher
Bland, N. Richardson

Varsity Basketball

The basketball team made a good showing this year, considering the fact that it was greatly handicapped by inexperience. With only a few lettermen returning, Coach Stannard was forced to build the team around seven or eight promising freshmen. The result was not a winning season, but an interesting one that was characterized by the improvement of the first-year men. Then, too, injuries took a toll: Bill Pond, stellar guard, and Harold Tanneberg, flashy newcomer, were both lost by injuries. Whitworth won games from Farm Credit Association, Marine Reserve Corps, Northwest Business College, Barclay Photo, and Fourth Presbyterian. Games were lost to Cheney Normal, Lewiston Normal, Gonzaga Frosh, Grand Coulee Engineers, Hillyard Boosters, and Idaho Frosh. The leading scorer of the team was Elmer Douglas, who averaged approximately nine points a game.



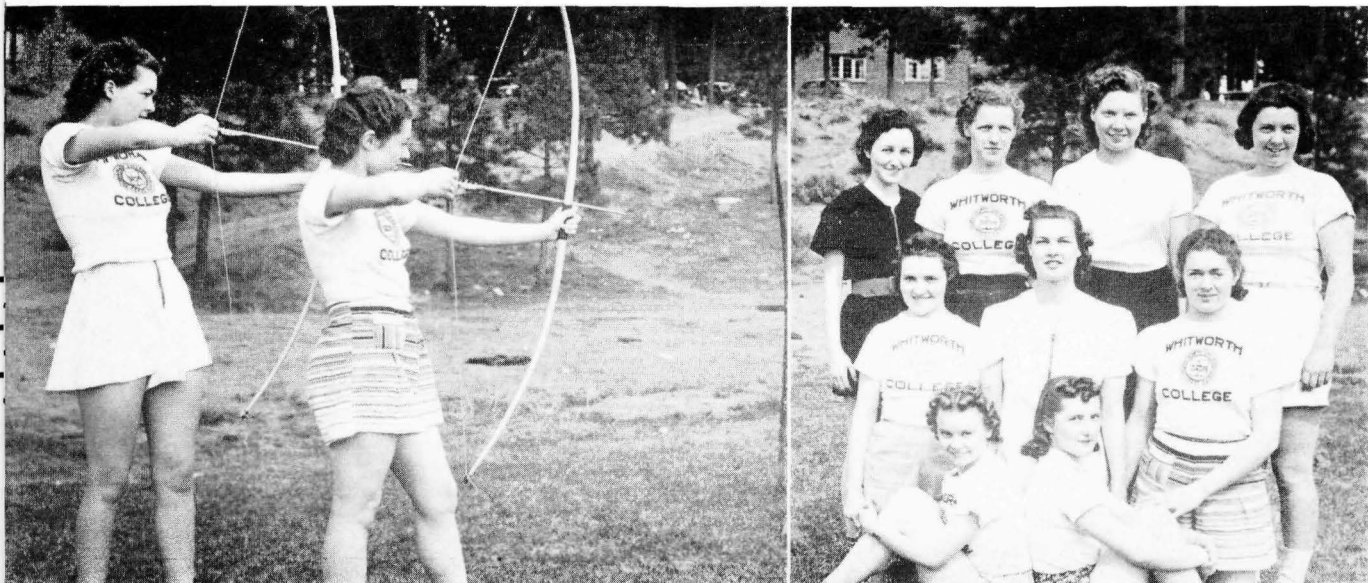
1—Ralston, Kirsch, Scarpelli, MacIntyre
2—J. Hook, Colpitts, L. Hook, Carman, Potter

Junior Varsity Basketball

The Whitworth Junior Varsity, coached by Bill Pond, had a highly successful season. The high-scorer of the aggregation was LeRoy Hook, forward. Below is their record:

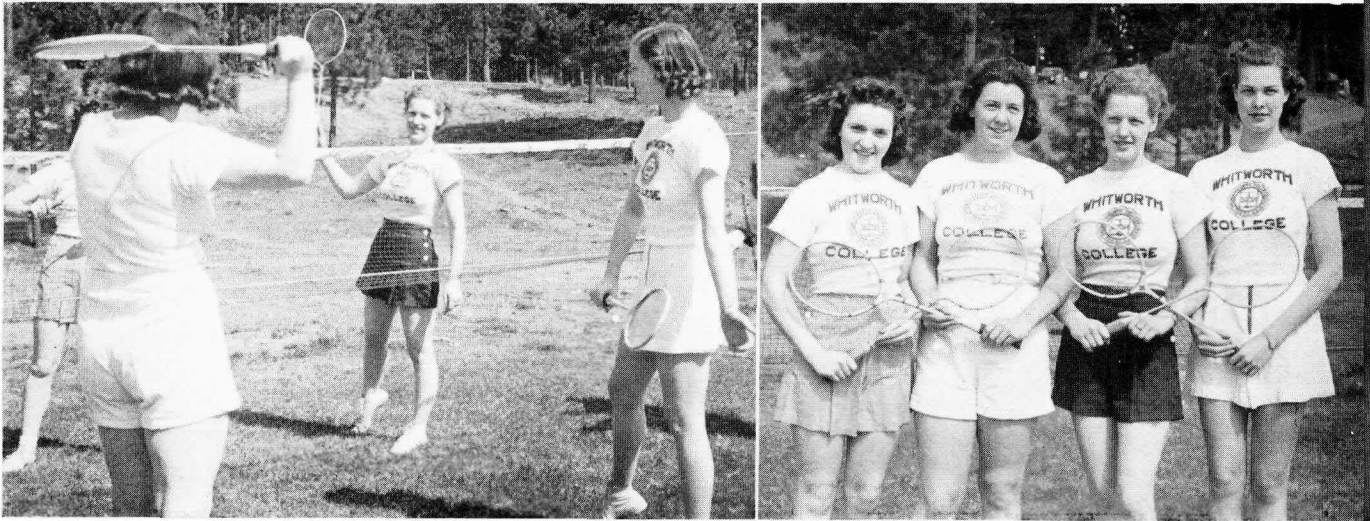
Whitworth J. V.'s	20	Central Methodists	22
Whitworth J. V.'s	15	Hillyard Boosters (B)	7
Whitworth J. V.'s	38	Lidgerwood Evangelical	30
Whitworth J. V.'s	17	Hillyard Boosters (B)	11
Whitworth J. V.'s	26	Knox Presbyterian	19
Whitworth J. V.'s	27	Lidgerwood Evangelical	34
Whitworth J. V.'s	32	Central Methodists	37
Whitworth J. V.'s	34	Rogers (B)	42
Whitworth J. V.'s	24	Fourth Presbyterian (B)	23

Total games won—5. Total games lost—4.



Archery affords one of the surest tests of marksmanship. Many of the women tried their luck with the bow and arrow.

Basketball gave plenty of excitement and exercise for the women. The freshman and the sophomore girls seemed to prefer this sport to all others.



Badminton, although rather new at Whitworth, was the best-liked sport among the upperclass women this year. It was played on the football field as well as in the gym.

Tennis always has a large number of followers. This year it had rather a difficult time holding its own against badminton.



The volleyball turnouts were larger than the turnouts for any of the other sports. All the women had a good time with this particular indoor game.

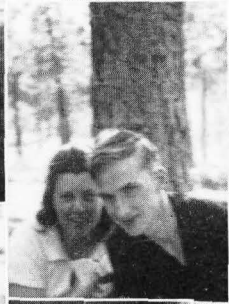


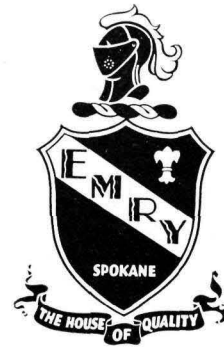
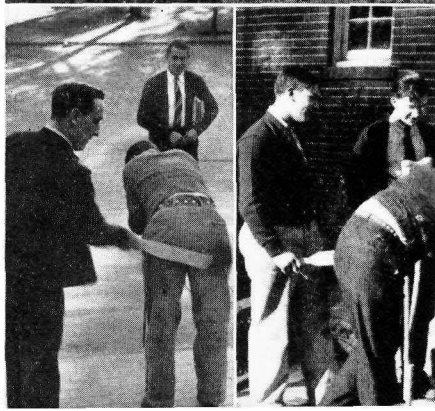
1—Stanford, Tobie, Williamson, Shaw, Ferrera
2—Kirsch, Ralston, L. Stannard, G. Rodkey

The First-Aid course was most profitable, as well as exceedingly interesting. Although it is still rather new to the college, it was enthusiastically received by both men and women of the college.

Advertising







Our Fifty-first Year in
Spokane



A & K Markets

S. A. Wylie

Alfred W. Carlson

WYLIE-CARLSON
PRESCRIPTION DRUGGISTS

Corner Sprague and Wall
Phone Main 1188

Whitworth Service
No. 2

Stop in and see us for gas,
oil and lubrication

24-hour service

Pend Oreille and Division
Henry McInturff

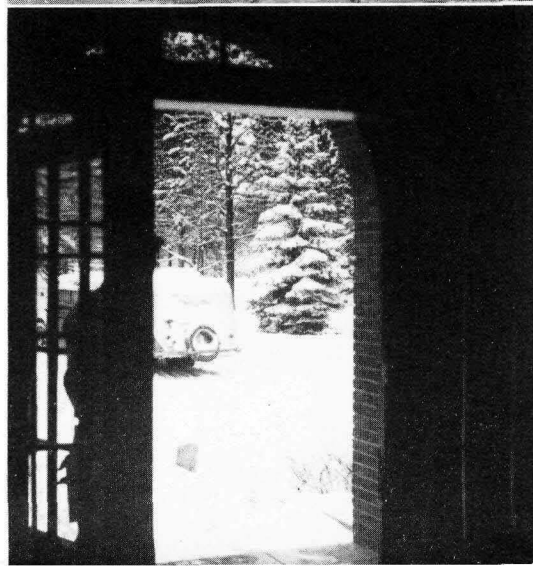
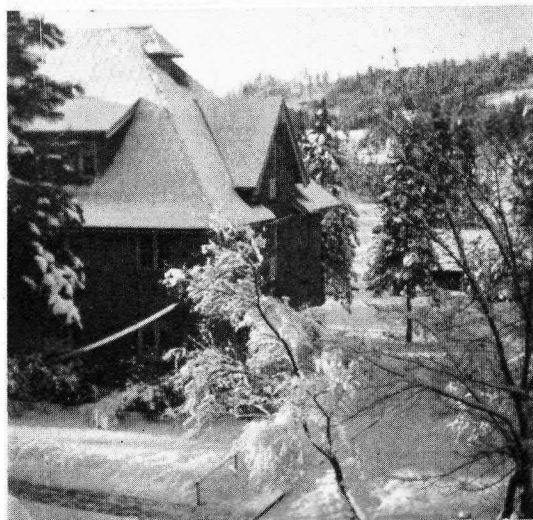
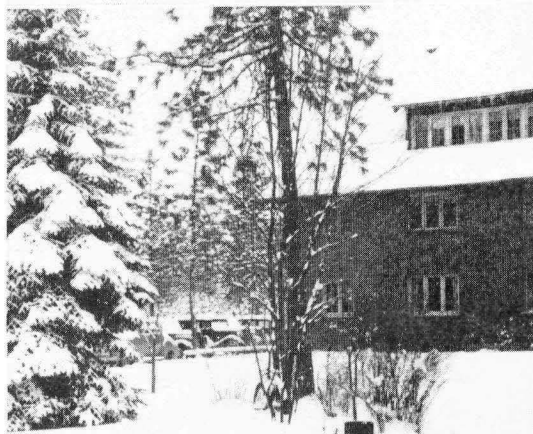


*So that You
need not guess*

*We maintain ample
equipment and an ex-
perienced art and
mechanical staff —
So that our patrons
need leave nothing to
chance*

**THE
SPOKANE AMERICAN
ENGRAVING COMPANY**

Established 1904



Congratulations! **GRADUATES**

As you embark on a NEW ERA of PROGRESS, you will have the good wishes of the International Harvester Company.

May the years to come bring you as much PROGRESS, GOOD CHEER and GOOD FORTUNE as has the past.



INTERNATIONAL HARVESTER CO.

715 E. Sprague Spokane, Wash.

BURGAN'S

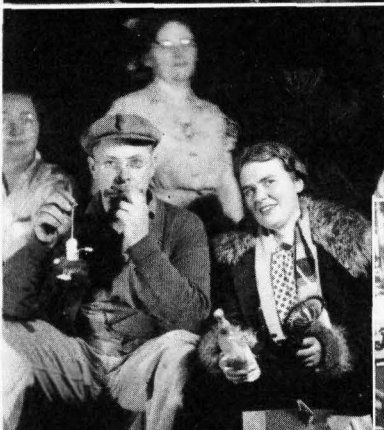
Money-Saving Food Stores



You'll Save at Burgan's



**36 Stores in
The Inland Empire**



CHRISTIAN'S PORTRAITS

"EXQUISITE BUT NOT EXPENSIVE"



We attribute the success of the photographs in this NATSIHI to the cooperation of the students.

Frederick and Sylvia Christian,

Spokane Photographers

Waiting patiently gets us nowhere.
It's working patiently that does it.

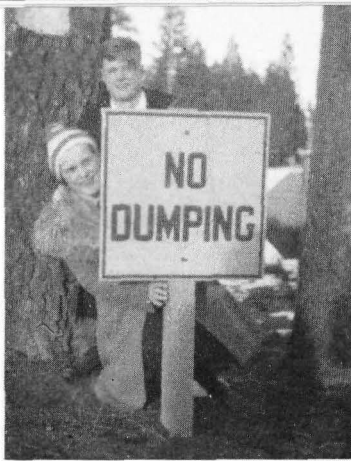
—Anon.



We, at the Inland-American, work patiently on every piece of printing that comes into our plant. Our capabilities have been tried and tested.

INLAND - AMERICAN *Printing* Co.

E. 706 Sprague Avenue
Spokane, Washington





707-711 Sprague Ave.

708-716 First Ave.

In Our SHERWIN-WILLIAMS PAINT Dept.

We Have Just Installed a

COLOR CONSULTANT SERVICE

to Assist You With Your

Home Interior and Exterior PAINTING PROBLEMS

**No More
Guesswork**

Here you see exactly what the new colors are in practical use. Come, let us be of service to you with your decorating plans this spring. If you paint the Sherwin-Williams way, using Sherwin-Williams products, you will be proud of a lasting and beautiful decorating job.

Trained Students Make Efficient Employees

Into the Washington Water Power Company during past years have come many past students of this college.

They are to be complimented on the splendid training given them by this institution of learning. They prove efficient in carrying out the company's policy of giving reliable electric service at low cost, and being friendly and helpful to all customers.

--THE WASHINGTON WATER POWER CO.





**WHITWORTH
HEADQUARTERS**

For Low-Price Food and
Fountain Treats

**DESERT HOTEL
OASIS**

Compliments of



SILLMAN HOTEL

Third and Monroe

Geo. L. Sillman, Manager

You Make No Mistake When
You Buy Your
Diamond Engagement Ring
at



On the East Side of Wall Between Riverside
and Sprague

COMPLIMENTS OF

**Auto Interurban
Company**

Bus Transportation Since 1911



Wall Street Lumber Co.

N. 5524 Wall Street

All Kinds of Lumber
 Hardware and Paint
 Free Planning Service and
 Estimates

Phone Glenwood 0055

Success to Whitworth



Exchange Lumber & Manufacturing Co.

Glenwood 0123 N. 2615 Cincinnati

COAL and WOOD —
 COAL STOKERS —
 COMPLETE FUEL SERVICE —

COLONIAL FUEL Company

E. 117 Boone Ave.
 Spokane, Washington
 Phone Broadway 5252

Whitworth Service Station No. 1

Everything for
 Your "Dorm Feed"
 or Picnic

RALPH R. LLEWELLYN

Novelty Carriage Works, Inc.

Phone Riverside 5401

815-17 Second Avenue

SPOKANE, WASH.

"Park Your Hair With Parks"

Parks Barber and Beauty Shop

Permanent Waving

All Lines of Beauty Work

Glenwood 0103 N. 4422 Wall

EUGENE'S FLOWER SHOP

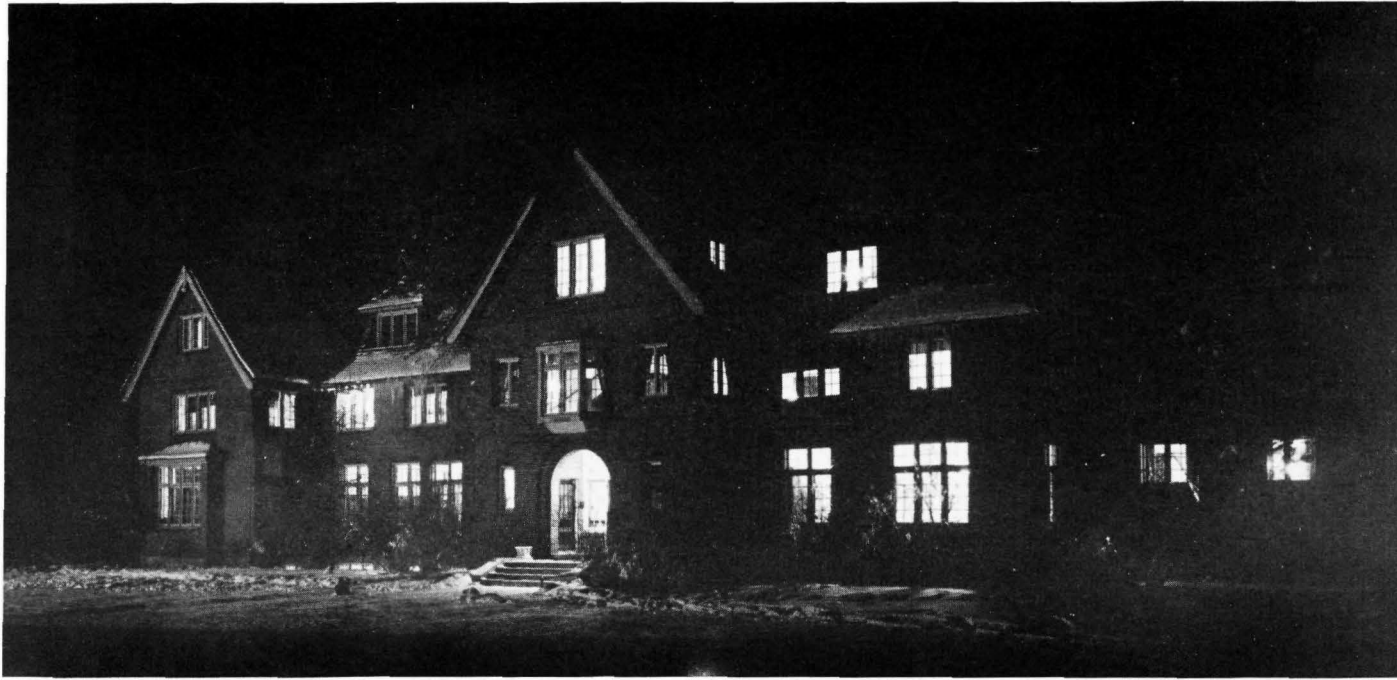
TWO CONVENIENT STORES
 READY TO PLEASE YOU

N. 7 Wall Street

Phone M. 1173

The Crescent

Phone M. 2341



CURLEW



For 33 years the Inland
Empire's discriminating
dealers have chosen for
their particular customers
these CURLEW products:

ICE CREAM

BUTTER

EGGS

CHEESE



They "made their way by
the way they're made."

Curlew Creamery Co.

Manufacturers and Distributors
Spokane - Chewelah - Grand Coulee

Out-of-door pictures by Leo's
Studio, University Place, Spo-
kane.

Malloy Cover by The S. K.
Smith Company, 2875 North
Western Avenue, Chicago.