

Whitworth Digital Commons

Whitworth University

Whitworth Alumni and Bulletin Publications

University Archives

Fall 1934

Whitworth College Bulletin 1934-1935

Whitworth University

Follow this and additional works at: <https://digitalcommons.whitworth.edu/alumnimagazine>

Recommended Citation

Whitworth University , "Whitworth College Bulletin 1934-1935" Whitworth University (1934). *Whitworth Alumni and Bulletin Publications*. Paper 440.

<https://digitalcommons.whitworth.edu/alumnimagazine/440>

This Book is brought to you for free and open access by the University Archives at Whitworth University. It has been accepted for inclusion in Whitworth Alumni and Bulletin Publications by an authorized administrator of Whitworth University.

Whitworth College Bulletin

SPOKANE, WASHINGTON

Volume 5

1934-35

Number 1

Entered as second class matter, August 5, 1930, at the Post Office, Spokane, Washington, under the act of August 24, 1912. Published four times a year, in Oct., Dec., Feb., and April, at Spokane, Washington. Subscription, 50c a year.

Introducing the Whitworth Men's Quartet



Mr. Williston—Accompanist

Mr. Koehler, First Tenor — Mr. Murray, First Bass

Mr. Hatcher, Second Tenor—Mr. Koper, Second Bass

"Music—God is its author, and not man. He laid the keynote of all harmonies; He planned all perfect combinations, and He made us so we could hear and understand."

—J. G. Brainard.

Whitworth College has full four-year accreditation with the Northwest Association of Secondary and Higher Schools, offering work leading to the Bachelor of Arts or Bachelor of Science degrees.

Announcements on next page

CALENDAR AND ANNOUNCEMENTS FOR SECOND
SEMESTER, SUMMER SESSIONS, AND
FALL OPENING, 1935

SECOND SEMESTER

January, 1935

28, Monday Registration for New Students

28, Monday Class work begins

April,

19, Friday Easter recess

May,

3, Friday Investiture and May Festival

22-28, Wednesday - Tuesday Examinations

26, Sunday Baccalaureate

28, Tuesday Class Day

29, Wednesday Commencement

SUMMER SESSIONS

June,

17, First term Registration

17, Class work begins

July,

22, Second term Registration

22, Class work resumes

FALL OPENING, 1935

September,

9-10, Monday, Tuesday New Students Registration

11, Wednesday Registration for former Students

*After
High
School,
WHAT
?*



PRESIDENT WARD W. SULLIVAN

One of the greatest questions confronting a young man or woman who has finished high school is "What shall I do next?" "A job?" Jobs are not plentiful; when positions are secured the

remuneration these days is small. "An apprenticeship?" Some young men and women have an opportunity to learn the "business" with a large business concern; many of these opportunities are worth while.

"College?" For the young man or woman who is prepared for college training and who has the opportunity of attending college, there is every reason for his going to college, rather than to start out into life's work without the preparation that a college education will give. A college education makes possible a better position in life with greater financial returns; more opportunity in life for greater service; more satisfaction in life, which means more happiness to the individual and to the world.

The correct answer to the question, "After high school, what?" is COLLEGE.

WHICH COLLEGE?

There are no less than fourteen hundred good colleges in this country. Any one offers ample opportunity for a young man or young woman to get a thorough training for life. Which college? Make your choice then GO!

DEVELOPMENT OF PERSONALITY AND LEADERSHIP

Whitworth college offers special opportunity in classroom and extra-curricular activities for development of personality and leadership. Other than athletics, music, and dramatics, there are many organizations in the student group. Among these are:

The Associated Students of Whitworth College, which is the general organization of the student body.

The Volunteer Fellowship composed of students whose purpose it is to prepare for general Christian service.

Whitworth Christian Endeavor, holding two meetings weekly.

Pre-ministerial group; young men who are preparing for full time service.

The Whitworth College Orchestra, whose reputation has created a demand for its appearances.

The Whitworth Chorus is a group of students interested in vocal work who are doing group singing. The men's glee club and the women's glee club are groups made up of the members of the chorus.

The Men's Quartet and the Women's Quartet are students who show special talent and are given special work to do.

The "Le Cercle Francais" made up of students interested in the use of the French Language.

"Vorwaerts" an organization of students interested in the German Language.

The Art Club, a student organization for the purpose of furthering the knowledge of and practice in the Arts.

"Sefelo" is the organization of the women students living in McMillan Hall.

The "W" Club consists of the letter men in athletics interested in the promotion of the athletic interest of the college.

The Women's Athletic Association is composed of the women of the college who are interested in women's athletics.

The Pirette club is an organization of the girls who promote pep and enthusiasm for the college and its activities.

Phi Alpha is the honorary scholastic organization of the college.



The Debate Team



Volunteer Fellowship Group

Whitworth College is located two and one-half miles north of the city limits of Spokane. It is fully accredited and is well equipped to meet all the needs in the field of liberal arts and sciences. It is also able to give courses leading to engineering, law, medicine, nursing or practically any other profession or business. It is equipped with strong departments in music and dramatics. Its teaching staff is composed of twenty-two men and women who have been trained in the best graduate schools of the country. Whitworth College is able to give personal attention to each student as there is one teacher for not more than fifteen students.

Before you select your college make an investigation of what Whitworth has to offer.

WHAT ACCREDITATION?

Whitworth College is fully accredited in the Northwest Association of Secondary and Higher Schools. Its graduates are admitted to the best graduate schools of the country; transfers may be made to other institutions on the same basis as students transferring from the leading institutions of higher learning. The American Medical Association approves the work offered at Whitworth College.

FULL PREPARATION FOR HIGH SCHOOL TEACHING

Whitworth College is also accredited with the Washington State Board of Education for complete training of teachers for teaching in the high schools of the State of Washington. Its graduates are also recognized by the State Boards of Education in other states of the Union.

STUDENT IMPRESSIONS OF WHITWORTH COLLEGE

"Chapel was new and interesting to me. It seemed to be a relaxation from the otherwise busy school day. It brings to my mind constantly that Whitworth is a Christian school."

—Selected.

"The attitude of the upper classmen toward freshmen seemed much different than I had expected. They treated us almost like classmates until initiation day, and then they had their fun all at once. All of their helpfulness and friendliness impressed the school life greatly on my mind and made Whitworth seem more inviting."

—Selected.

"The campus, too, registers a good impression with the newcomer, with its green lawns and towering pine trees. There is a greater degree of privacy at Whitworth than at many other schools. Being situated where it is, away from any other attractions, there is more time for study if a person is willing to take advantage of it."

—Selected.

"The first thing I noticed was the friendly way that each of the faculty used in helping the new students plan the course that they are to follow for the year. Next is the friendly and warm spirit that each upper classman showed toward the entrees. We were immediately adopted into the group. This spirit is one that cannot help being noticed."

—Selected.



"Whitworth has made a lasting impression on me. About the campus is an air of friendly dignity. The buildings, the flagpole and the surrounding trees all stand so straight and orderly as though they were capable of feeling proud in their part of Whitworth College."

"In this pleasant environment lives one of the most democratic bodies of young people that I have ever met. Handshakes are hearty at Whitworth. Friendships are easily made. Acquaintanceships are unavoidable."

—Selected.

"The small Christian college is the hope of America. Character is essential to statesmanship and these colleges are vital factors in the developments of sterling character."

—James J. Hill.

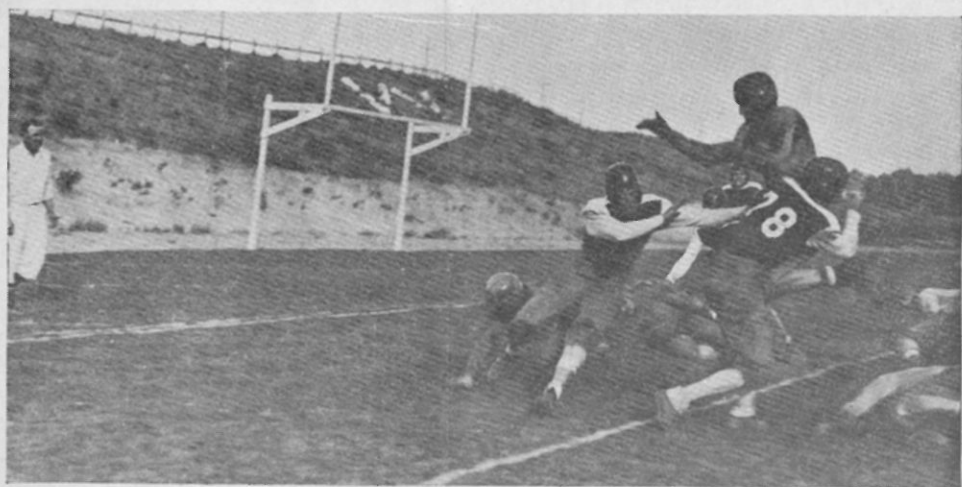


Whitworth College Orchestra 1933-34

VOCATIONAL AND PRE-PROFESSIONAL COURSES

Primarily Whitworth College is a Liberal Arts institution giving a broad, cultural background for a virile Christian citizenship. At the same time the curricula are so arranged that its students are trained for definite vocations such as Teaching, Business, Civil Service, Music, Journalism, Home Arts, and Director of Religious Education. Provision is also made to prepare those students who desire to go into some technical work to get an adequate Pre-professional training. Pre-professional courses are offered in Theology, Law, Medicine, Pharmacy, Dentistry, Nursing and Engineering in its several branches. Full four years of study are required for the vocational courses completed at Whitworth College. The Pre-professional courses may be completed in two years but the tendency is, in the better class of professional schools, especially Law, Medicine, and Theology, to require a full four years course in the Liberal Arts college. If the student has determined which profession he wishes to enter, his college course at Whitworth can be arranged accordingly.

Courses in all these subjects will be outlined for students in conference with the Dean and the heads of the various departments.



Whitworth College is serving well the high educational interests of the Northwest.

To the young men and young women who are seeking the best preparation for leadership in life's activities, an earnest invitation is extended to investigate Whitworth College.

For further information send in the following request:

Registrar, Whitworth College
Spokane, Washington

Date _____

Dear Sir:

I am interested in knowing more about Whitworth College. Kindly send me a catalog and place my name on your mailing list.

(Check in the proper space below to indicate your interest.)

_____ a student graduated _____
graduating from high school _____
year.

_____ a friend of the college.

_____ a parent having a ^{son} daughter expecting to enter college.

Name _____

Address _____

Telephone _____