

1945

## Natsihi Yearbook 1945

Whitworth University

Follow this and additional works at: <http://digitalcommons.whitworth.edu/yearbooks>

---

### Recommended Citation

Whitworth University, "Natsihi Yearbook 1945" Whitworth University (1945). *Natsihi Yearbook*. Paper 18.  
<http://digitalcommons.whitworth.edu/yearbooks/18>

This text is brought to you for free and open access by the University Archives at Whitworth University. It has been accepted for inclusion in Natsihi Yearbook by an authorized administrator of Whitworth University.

1945

## Natsihi Yearbook 1945

Whitworth University

Follow this and additional works at: <http://digitalcommons.whitworth.edu/yearbooks>

---

### Recommended Citation

Whitworth University, "Natsihi Yearbook 1945" Whitworth University (1945). *Natsihi Yearbook*. Paper 18.  
<http://digitalcommons.whitworth.edu/yearbooks/18>

This Book is brought to you for free and open access by the University Archives at Whitworth University. It has been accepted for inclusion in Natsihi Yearbook by an authorized administrator of Whitworth University.

WHITWORTH  
HERITAGE  
COLLECTION

LB  
3621.67  
.W5  
1945

*THE JUNIOR CLASS  
of 1945*

*presents . . .*

*THE  
NATSIHI*

*Annual Publication  
of  
WHITWORTH COLLEGE  
Spokane, Washington*



James Willard Countertermine  
B.A., M.A., M.Th., D.D.

## TRIBUTE



Dr. James Willard Countertermine has been at Whitworth longer than any other member of the faculty, and it is with a deep appreciation of his contribution that we take this opportunity to pay tribute to him. He came to Whitworth in 1928 from Hawaii, where he had been head of the Old Testament and Greek departments in the Honolulu Theological Seminary. He received his B. A. and his M. A. from Parsons College, his M. Th. from Princeton, in 1905, and his D. D. from Buena Vista College, in 1910.

His vast experience includes graduate work at Princeton University, and in Hawaii. He was principal of a high school from 1899 to 1904, head of the departments of Mathematics and Philosophy at Lenox College from 1898 to 1899, Dean of Religious Education at Highland Park College from 1912 to 1915, and Superintendent of Missions in Puerto Rico from 1917 to 1918. The next eight years he spent at the Honolulu Theological Seminary.

Dr. Countertermine had charge of Whitworth's Bible department until 1940, when his health demanded that he resign, but he has continued as an instructor in our Bible Department and now leaves us, the oldest professor in years of service, that Whitworth can claim. We are proud that he has been named Professor Emeritus in the Bible Department, and are sorry to see him go. It is more than his courses that we will miss, for we have thoroughly enjoyed the presence of Dr. and Mrs. Countertermine at college functions through the years.

His life has been marked by a devotion to God and His work that has been beautiful to see. Dr. Countertermine, you are loved and admired by all who know you, and this inadequate tribute comes from the hearts of Whitworth; past, present, and future.

## SENIOR CLASS HISTORY



The Graduating Class of 1945 goes forth, having left a deep impression in the four years they spent beneath the pines. Entering one sunny day in September, 1941, before the United States entered the war, they have pushed forward, and despite the fact that the war has taken a heavy toll of their members, they have provided an unusual amount of leadership. In athletics, in student body affairs, in club activities, in scholarship, they have been preeminent. Two of its members have been Student Body President, Bruce Finlayson and Dick Schwab; three of the class have been vice-president; two have been secretary, and two treasurer. In addition, two have held the position of editor-in-chief of the *Whitworthian*, and one, that of student council representative.

The freshman year saw such outstanding events as the building of Jay P. Graves Hall, Pearl Harbor, the coming of Spokane Junior College to the Whitworth Campus, and the "Brickskrieg" to brick Graves Hall. The following year the women of the class provided leadership for the annual Women's Conference, half of the committee members coming from the sophomore class. The same week-end, the men of the class went apple-picking to help out during an emergency shortage of men, but on the return trip the truck went over the bank, killing two men, including Francis Stevens, a sophomore.

As juniors the class excelled. They had won three of four ASWC officer-ships as sophomores, and as juniors they swept the ballot. They kept themselves in the limelight by honoring "Schlauch's Super Senior Scholars" at a junior-senior party, and then three days later surprised the graduates on their senior sneak within two hours after the sneak began. The end of the year saw the *Natsihi*, which the juniors always put out, something new in a radio-style production.

With Bruce Finlayson and Professor and Mrs. Mark Koehler serving second terms as president and advisers, respectively, the seniors proved they could not only find seniors on a sneak, but fool juniors seeking to find seniors, when they disappeared for an early morning breakfast in downtown Spokane in February. Marjorie Klein was awarded the alumni award, and Betty Marcellus was chosen May Queen. After many meetings held in their honor, the fifty-fifth Whitworth class will be graduated June 11th, with Dr. Jesse Hays Baird as their Commencement speaker. And they go forth, having left their impression, to make a greater impression on the world which is before them.

But they take with them in their memory, one who could not make that journey with them. A quiet youth he was, and deeply interested in science. He gave his life on no battle front, but he did give that life in freedom's dark hour. And the seniors, hoping that this will be the only "Gold Star" for their class, pledge themselves that they will strive forward, carrying the Christian banner high, to create the better world for which Francis Stevens died.

# SENIORS



- MURIEL MAXINE AUSINK, Selah, Washington, transfer from Seattle Pacific College; Major-Social Science, Minor-Christian Education. ASWC Vice-President, Pirettes, Life Service Club President, Who's Who Among Students in American Colleges and Universities, Sefelo, Christian Endeavor, May Court, Gospel Teams.
- VIRGINIA BOGGS, White Salmon, finishing at Women's Medical College, Pennsylvania; Major-Pre-Medical, Minor-Chemistry. Sefelo, W. A. A. Christian Endeavor, Modern Language Club.
- ALBERT A. BROWN, Corvallis, Montana; Major-Business Administration, Minor-Sociology. "W" Club, Basketball Captain and Inspirational Player, Football, ASWC Treasurer, Who's Who Among Students in American Colleges and Universities, Student Handbook Committee Chairman.
- MARY ALISON BURKLAND, Roosevelt High School, Seattle, transfer from Seattle Pacific College; Major-Sociology, Minor-French. President and Director of "Pep Pirates," Whitworth Players Vice-President, "Nine Girls," "Ring Around Elizabeth," Alpha Psi Omega, International Relations Club Secretary-Treasurer.
- CLARENCE CHAPMAN, transfer from University of California, Berkeley; Major-Social Science, Minor-Greek. Alpha Chi.
- BRUCE DOUGLAS FINLAYSON, Anacortes; Major-Social Science, Minor-Speech. Alpha Chi President, Natsihi Business Manager, "W" Club, Football, Basketball Manager, Philadelphians, Whitworth Players, Alpha Psi Omega, "Ring Around Elizabeth," "Penthouse Production," "Merchant of Venice," Junior and Senior Class President, Men's Conference Committee.
- MARIE FRANZ, transfer from Bethel College, Kansas; Major-Home Economics, Minor-Physical Education. Alpha Beta, International Relations Club Vice-President, W. A. A., Christian Endeavor.
- FLOYD GURNSEY, Hayward, California; Major-Bible, Minor-Greek. (No Picture.) Philadelphians, Manager of Student Work, Assistant in Physical Education Department.
- GERTRUDE LOUISE HAUSSLER, Millwood, transfer from Portland Sanitarium and Hospital, Oregon; Major-Nursing Science, Minor-Biology.
- JOHN HENRICKSEN, Spokane; Major-History, Minor-English. Editor-in-Chief of Whitworthian, Natsihi Staff, International Relations Club, Phi Alpha Secretary.
- MARJORIE FERN JOHNSON, Kellogg, Idaho; Major-Biology, Minor-Sociology. ASWC Secretary, Alpha Psi Omega President, Whitworth Players, "Letters to Lucerne," "Nine Girls," "Ring Around Elizabeth," "Family Portrait," Women's Bible Conference Vice-Chairman, Natsihi Staff, Medici Futuri, Sefelo, W.A.A., Life Service Club, Christian Endeavor.
- MARJORIE MAE KLEIN, Edwall; Major-Music, Minor-Secretarial Science. ASWC Secretary, W. A. A. President and Secretary, Women's Bible Conference Chairman, Pirette President, Who's Who Among Students, Senior Class Vice-President, Whitworthian Staff, Natsihi Staff, Alumni Inspirational Award, Accompanist, Christian Endeavor, Executive Board.
- QUENTIN LEISHER, Spokane; Major-Social Science, Minor-Psychology. (No picture.) Philadelphians, Student Orchestra.
- GLADYS BERNADINE LOGSDON, R. N., transfer from Deaconess Hospital, Spokane; Major-Nursing Science, Minor-Biology. Phi Alpha, School Nurse, Life Service Club, W. A. A. Letterman, Sefelo, Christian Endeavor.
- HANS MOLDENHAUER, transfer from Spokane Junior College; Major-Music. (No picture.)





# SENIORS



- BETTY CARYL MARCELLUS, transfer from College of St. Scholastica, Duluth, Minnesota; Major-Home Economics, Minor-Christian Education. Alpha Beta President, May Queen, Life Service Club Vice-President, Christian Endeavor Treasurer, Christian Activities Council, Senior Class Secretary-Treasurer.
- DON McINTURFF, Spokane. (No picture.) "W" Club, Basketball, Football.
- ISABELLE McNEELY, Cowiche; Major-Home Economics, Minor-Speech. Alpha Beta, International Relations Club, Whitworthian Staff, Whitworth Players, "Family Portrait," Sefelo.
- ISABEL MISE, transfer from Spokane Junior College; Major-Music, Minor-Psychology. Pirette Secretary, Phi Alpha President, Who's Who Among Students, Women's Bible Conference Committee, Junior Class Vice-President, Accompanist.
- HELEN MIRIAM MORROW, transfer from Modesto Junior College, California; Major-Christian Education, Minor-Biology. Phi Alpha, Pirettes, Who's Who Among Students, Christian Endeavor President, Life Service Club, Sefelo, Band and Orchestra, Natsihi, Christian Activities Council.
- LYMAN MEYERS, Reardon, transfer from Seattle Pacific College; Major-Bible, Minor-History. Philadelphians.
- TOMIYE NISHOMOTO, transfer from University of Washington; Major-Home Economics, Minor-Sociology. Alpha Beta, Sefelo, Christian Endeavor, Alpha Kappa Chi.
- ROBERT SANDERS, Spokane, graduate of Prairie Bible Institute, transfer from Bethel Junior College, St. Paul, Minnesota. Philadelphians, Chorus.
- RICHARD CHARLES SCHWAB, Corvallis, Montana; Major-Chemistry, Minor-Mathematics. ASWC President, Who's Who Among Students, Phi Alpha, Assistant in Chemistry Department, Christian Endeavor President, Basketball, Alpha Chi President, Student Representative to Executive Board, Chorus, Modern Language Club.
- JACK RICHARD STARRETT, Roosevelt High School, Seattle, transfer to St. Louis University of Medicine; Major-Pre-Medical, Minor-Chemistry. ASWC Vice-President, Who's Who Among Students, Yell King, "W" Club, Football, Alpha Psi Omega, Whitworth Players, "Death Takes a Holiday," "Merchant of Venice," Christian Endeavor.
- GEORGE L. VAN LEUVEN, JR., Mead; Major-Social Science, Minor-Biology. Whitworthian Editor-in-Chief, Natsihi Editor, Phi Alpha, Philadelphians, Volunteer Fellowship, Chairman Publications Council 1945, Active Member Phi Alpha 1945, Who's Who Among College and University Students 1944.
- MIRIAM JOYCE WARREN, Spokane; Major-Biology, Minor-French. Pirette Vice-President, Life Service Club President, Whitworthian Staff, W. A. A. Treasurer, Alpha Psi Omega, Whitworth Players, "Ring Around Elizabeth," "Nine Girls," Christian Endeavor, Christian Activities Council, Women's Bible Conference, Girls Trio, Accompanist, May Court, Natsihi Staff, Volunteer Fellowship.
- FLORENCE ELIZABETH WIMER, transfer from Portland Sanitarium and Hospital, Oregon; Major-Nursing Science, Minor-Biology.
- HUGH WOOD, Vancouver, transfer from Hardin-Simmons University, Abilene, Texas; Major-Bible, Minor-History. Philadelphians.
- KATHRYN BEST, Montesano, finishing at Swedish Hospital, Seattle; Major-Nursing, Minor-English. (No picture.) Sefelo, Christian Endeavor, Modern Language Club.
- REGINA BISHOP, Garfield, finishing at St. Luke's Hospital, Spokane; Major-Nursing, Minor-Chemistry. (No picture.) Sefelo, Christian Endeavor.
- MARILYN BLINDAUER, Hamilton, Montana, finishing at St. Luke's Hospital; Major-Nursing, Minor-Chemistry. (No picture.) Sefelo, Christian Endeavor.



## JUNIORS



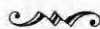
*Top Row:* Dorton Coats, George Hendrick, Eugene Knautz, Art Sanford, Gene MacDowell, Leal Hall, Bill Chalmers, Al Franz, John Webster, Jim Halbert. *Second Row:* Ava Mae Bainard, Fay Hill, Mae Lancaster, Mrs. Mabee, Virginia Hunt, Frances Hathaway, Ruth Jantzen, Louise Klebe, Opal Coats, LuAlice Wilson, Jeanne Henderson, Gerry Falk, Caroline Russell, Jean Duncan, Gloria Stokes. *First Row:* Heidi Horikawa, Sumiko Nakano, Edna May, Marge Schauble, Marian Scofield, Naomi Laurie, Della Specker, Ruth Barnes, Emelyse Long, Dorothy Munce.

## SOPHOMORES



*Top Row:* Ruth Means, Elnore Wacker, George Yamamoto, Shirley Lalor, Bette Hoffman, Alvida Lehn, Tom Summerson, Mr. O'Brien, Ralph Hoibakk, Barbara Mullen, Barbara Ann Southward, Marilouise Dowdy, Alice Elliott. *Third Row:* Mr. Waltz, Edna Dowke, Yuriko Ishibashi, Bernice Fiddler, Barbara DeFoe, Dorothy Garwood, Emily Polson, Margie Smith, Kathryn Nothwang, Irene Pruter, Arlene Reickers, Helen Garner, Marge Brock Pentecost, Betty Ann Klee. *Second Row:* Michi Hirata, Mary Ito, Peggy Cromer, Sue Harris, Lorraine Frick, Crystal Croft, Dorothy Comphor, Carol Chambers, Elizabeth Evans, Pat Spellman, Donna Ruby. *First Row:* Arnold Wall, Lee Wallace, Lee Andrews, Paul Oss, Tomi Teraoa, Marvin Klein, Harold Borhauer, Bert Kimura.

## FRESHMEN



*Top Row:* Jeanne Kirkendorfer, Jean Mack, Elda Mae Childers, Jean Paeth, Rose Davis, Norma Dick, Sylvia Johnson, Marjean Russell, Shirley Hall, Eleanor Berry, Mary Lois Bovee, Eleanor Renkert, Dorothy Funk, Virginia Fulton, Grace Henricksen, Hilda Bloomquist, Hazel Heath, Phyllis Newton, Betty Summerson. *Third Row:* Fumi Onoda, Kathleen Doty, Dorothy Stannard, Eirene Carlson, Shirley Davies, Mary Lou Christman, Dorothy Smyth, Nancy McFarlane, Wanda Lassater, Eleanor Riter, Bernice Woodhead, Nadine Lamkin, Marilyn Stark, Viola Goodale, Marilyn James, Mildred Nelsen, Jean Landreth, Patricia Bishop, Margaret Snyder, Lois Morton, Lillian Ross. *Second Row:* Lorene Dong, Adeline McNeely, Carol Berg, Fay Smith, Lois Waldron, Myrna Rhoads, Lucille Walters, Joan Nyreen, Barbara McCarty, Gweneth Dors, Margery Haas, David Weyer, John Melville, Dan Matsumoto, George Ike. *First Row:* Bob Schiffner, Gordon Axworthy, Neil Nolen, Ray Moody, Kenneth Moe, Donald Bower, John Schuler, Jacob Wong, Elmer Click, John Croker, David Barnes, LaVerne Brassard.



OR



SOPHOMORE



FRESHMEN

# WHITWORTH'S FIRST CADET CLASS



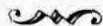
GRADUATING CLASS OF JANUARY, 1945

*Top Row:* Norine Johnson, Norma Sivil, Ruth Inman, Arra Marie Albrecht, Grace Cuplin, Donna Burmester, Vera Beauchamp, Arlene Heer, Dorothy Helstrom, Dorothy Talbott, Gertrude Christ, Jane Bronick, Betty Wilcox. *Third Row:* Jean Carlson, Helen Seiter, Maxine Johnson, Eleanora Pflugrath, Virginia Boe, Nita Lilly, Lois Thomas, Leoma Clausen, Vila Walker, Virginia Anderson, Catherine Wright, Shirley Whitford. *Second Row:* Frankie Smith, Marjorie Castrets, Shirley Bline, Jessie Valdez, Helen Kessinger, Irene Battles, Verna Hall, Barbara Wingo, Caroline Gibson, Katherine Alexander, Shirley Crandall. *First Row:* Hazel Avery, Edith Garrison, Wanda Pruitt, Dee Pitzner, Miss Kraabel, Velda Tisdale, Martina Heldman, Jackie Clark, Ruth Edson, Dorothy Nichols.

## MARCH CLASS OF CADETS

*Top Row:* Elvira Garcia, Ester Cech, Amie Rierson, Esther Beach, Betty Jane Hanke, Beulah Alderson, June Kidder, Alice Mae Grandy, Carol Chambers, Myrna Rhoads. *Second Row:* Yoshiko Onchi, Ruth Hankinson, Elaine McLean, Joyce Harding, Pat Williams, Hazel Ashbridge, Edithmae Felts, Dorothy Comphor, Mary Ito. *First Row:* Erlarene Trager, Katherine Olinger, Lucille Wilkins, Dorothy Cherry, Betty Guthrie, Ruth Guhlkie, Elizabeth Evans, Ellen Kilby.

## CLASS PRESIDENTS



David Barnes, Freshman President; Betty Ann Douglass, Junior President; Elnore Wacker, Sophomore President; Bruce Finlayson, Senior President.



FALL CADETS



SPRING CADETS



CLASS OFFICERS

## STUDENT COUNCIL



The Student Council is made up of the members of the Executive Board, and the presidents and vice-presidents of all clubs, classes, and organizations, as well as the editors and business-managers of the *Natsihi* and the *Whitworthian*.

*First Row:* Marjorie Klein, Helen Morrow, Mae Lancaster, Della Specker, Mary Burkland, Joyce Warren and Muriel Ausink. *Second Row:* Johanna Briggs, Marilouise Dowdy, Geraldine Falk, Betty Ann Douglass, Marjorie Johnson, Elnore Wacker and Barbara Mullen. *Third Row:* John Henriksen, Al Brown, Dick Schwab, Dave Barnes, Dorton Coats, and Bruce Finlayson.

## PIRETTES



The Pirette organization is made up of girls who have been chosen for scholarship and leadership, and who are considered best qualified to promote the spirit of *Whitworth*. Membership is honorary, and there is not a girl on the campus who would not like to boast a Pirette sweater.

*Left to Right:* Helen Morrow, Betty Ann Douglass, Marilouise Dowdy, Muriel Ausink, Miss Jenkins, Marjorie Klein, Dorothy Munce, Isabel Mise, and Joyce Warren.

## WHITWORTH PLAYERS



All hopeful actors and actresses, when they arrive on our campus, look first for the *Whitworth Players*, our dramatic club. This organization makes one of the greatest contributions to the year's activities, for the fruits of their labors can be enjoyed by all of us.

*Front Row:* Nadine Lamkin, Vera Fay Wilson, Joyce Warren, Ruth Barnes, Margery Schauble, Edna May, Isabelle McNeely, Adeline McNeely. *Second Row:* Marjorie Johnson, Mildred Nelsen, Mary Lois Bovee, Margery Haas, Ralph Hoibakk, Mr. Waltz, Bruce Finlayson, Della Specker, and Marilyn James.





## STUDENT EXECUTIVE



The Student Executive—Whitworth's "Supreme Court." Here, the laws of the student body are made. Here, the student leaders keep the machinery of student life running smoothly.

Muriel Ausink, Al Brown, Dean Munn, Margery Johnson, Dick Schwab, and Mae Lancaster.

## SOCIAL COMMITTEE



The Social Committee has as its job, keeping Whitworth's Calendar full and interesting. This year's committee has done an excellent job in both respects. Who will forget our beautiful banquets, or the Party of all Nations?

Muriel Ausink, chairman; Marjorie Klein, Shirley Davies, Geraldine Falk, Miss Jenkins and Mae Lancaster (seated).

## WOMEN'S CONFERENCE COMMITTEE



The work of the Women's Conference Committee begins in the Spring quarter when plans are laid for Women's Conference in the Fall, and continues through the summer and until the conference is over. It's a hard job this committee has to do, but the results are always so gratifying that the labor is soon forgotten. Women's Conference is the favorite activity of the year in the minds of most of the girls, thanks to such committees as this.

*Front Row:* Della Specker, Virginia Hunt, Marian Williams. *Second Row:* Jean Aldrich and Mich Jenkins. *Third Row:* Margery Johnson, Marilouise Dowdy, Joyce Warren, Elnore Wacker, Marge Klein (chairman), Dorothy Munce, and Isabel Mise.

## CHRISTIAN ACTIVITIES COUNCIL



Christian Activities Council. The purpose of this new organization, which is made up of the presidents and vice-presidents of Whitworth's religious organization, is: "To seek to promote a well-rounded spiritual program on the campus of Whitworth College." Dorton Coats served as Chairman this year, and the other members were:

Professor Koehler, adviser; Joyce Warren, Marilouise Dowdy, Helen Morrow, and Betty Marcellus.



UDENT EXECUTIVE



SOCIAL COMMITTEE



WOMEN'S CONFERENCE COMMITTEE



CAMPUS ACTIVITIES COUNCIL

## CHRISTIAN ENDEAVOR



The Largest Organization on the Campus. Under the direction of Miss Jenkins, adviser, and Miss Plank, co-adviser, the group realized in a large measure its goal to make more dominant the spirit of Christ on the campus. The officers were: Helen Morrow, president; Marilouise Dowdy, vice-president; Nancy McFarland, secretary; and Verna Zenier, treasurer.

In celebration of the birthday of Christian Endeavor, a Rally, and a special Chapel service were sponsored. Rev. Harold Penhalurick, of Sandpoint, Idaho, was the guest speaker. The celebration was closed Sunday evening, when the faculty took over the Christian Endeavor meeting.

## LIFE SERVICE CLUB



With their main objective to know Christ better and to serve Him more fully during their college days, the Life Service Club has spent an active year. Mrs. Frank F. Warren was the adviser for this club, made up of girls who are looking ahead to Christian Life Service.

The officers were: Joyce Warren, president; Betty Marcellus, vice-president; Marjorie Haas, secretary; Ellen Kilby, treasurer; Marjorie Schauble, program chairman, and Johanna Briggs, historian.

The group sponsored a Letters to Servicemen project, planned a Chapel service, and enjoyed three very successful picnics.

## PHILADELPHIANS



The year just completed, was one of vigorous activity for the Philadelphians, a group of men students planning full-time service for Christ. Leaders for the group included: Mark Koehler, adviser; Dorton Coats, president; George Van Leuven, vice-president; Bob Sanders, secretary-treasurer; and Arthur Sanford, program chairman.

The main project for the fall quarter was the purchase of plaques for the class rooms, but a much larger project was begun in the spring. These men undertook to build a Prayer Chapel for the use of the student body, and to our joy and amazement we have seen this building rise and Dorton and his club members busied themselves with hammers, saws and nails. Next year we will proudly boast of this addition to the campus. The Philadelphians deserve a bouquet of roses from the entire student body in appreciation of such an excellent project.



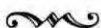
CHRISTIAN ENDEAVOR



LIFE SERVICE



## DEAR DIARY . . .



1. October 2 . . . Arrived at Whitworth today. Whew! What a trip, but I'm glad to be here.
2. Some students arrive one way; some, another!
3. Saturday . . . About thirty students went out to pick apples this morning. We brought back fifty boxes for the dining hall.
4. October 13th . . . Women's Conference started today. That's Mrs. Snyder standing beside Milly. She gave us some wonderful talks on China.
5. Isabel and Jean, and Eleanor and Marian, at the door of their cabin at Twin-Lo.
6. November 18th . . . Harvest Queen Peggy! Homecoming week-end has been exciting. Last night was the banquet at the Davenport, and tonight they gave "Ring Around Elizabeth."
7. That's our Dean. The look of ecstasy suggests—well, I don't know, but I'm sure it suggests something.
8. The Cadets blossomed out in their work-uniforms today. They look like Angels of Mercy.
9. It must be nice to have time to sit in the sun like Carol and Eleanor, and Kathryn and Gerry do.
10. The stars of this picture are Dr. Hubach and Wallenstein. (That's Wallenstein lying down.)
11. Poor girl! She just heard that Finals are drawing near.
12. The Ballardites decided to clean house today.
13. Presenting the Rev. Carol, or "Preacher" Berg!
14. Lois and "Sny" are such a devoted couple! Even in the morning.
15. Finals are over! !
16. December 21st. Christmas vacation! ! !



## DEAR DIARY . . .

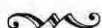


1. January 3rd . . . Back to school. I see Warrens dressed up their door for the Holidays. That's Dr. Warren and Muggins having a chat.
2. Remember the day Bill Schlauch came home? Was Dr. Schlauch happy! !
3. Presenting our championship basketball team. Of should we say, our Championship GIRL'S Basketball team?
4. The Principals who played the leading roles in Spiritual Emphasis week. Dr. McLean, Mrs. McLean, and Prof. Koehler.
5. February 9th . . . Dr. Vale, the Moderator of the General Assembly of the Presbyterian Church was here. His message will be remembered as one of the best in the entire year!
6. Homecoming for the Forresters! Dr. Warren and Chaplain "Jim" had a lot to talk about.
7. You haven't seen Whitworth from the "bird's-eye-view" until you have hiked up to the Five-Mile Ridge.
8. Mrs. Warren and Mrs. Vale, the day of the Moderator's visit to the campus. First Lady of the Presbyterian Church, and First Lady of Whitworth!
9. Fay, and Ava, and Mel, and Whitworth Tree. No men, ah men, amen.
10. And to think that Muriel is a high and mighty (?) senior!
11. Wouldn't you know the editor would put her own picture in ! ! !
12. Some of the town girls gave Jeanne Kirkendorfer a birthday party.
13. Remember the All-Nations Party? The trio did a good job (as usual).
14. Not convict Koehler, but basket-ball official Koehler ! !
15. When Corky left he didn't know he would win the Pirette Inspirational Award, but he did!
16. The Cadets have certainly added to the scenic beauty of the Campus.
17. He who knows Whitworth knows Mr. Draper.
18. Whitworth Hall seems to be expecting company.
19. The Seattle Pacific boys "took over" for a day or so.
20. You name it and you can have it.





## DEAR DIARY . . .



1. March 28th. Off to a flying start for the Spring Quarter. Lookit the purty girls—in the spring a young man's fancy etc. etc. etc.
2. What with spring and all, the Rev. Koehler stands ready to officiate at practically anything.
3. People certainly get silly in the Springtime here.
4. The boys must have heard that there would only be six girls to each fellow next year, so they packed up and started home.
5. Impersonation Day! It was a little surprising to see Snow White and the Seven Dwarfs walk into breakfast that morning.
6. Imagine all those people going to the trouble of getting dressed up to impersonate some dear departed hero of their childhood.
7. That's Michal Koehler, not an impersonation of her.
8. On Campus Day, when the Alumni played the Philadelphians in basketball! You'd think those Alums could have found their old basketball suits SOMEWHERE in the attic. Oh well, they dressed as appropriately as they could I suppose.
9. Even Raggedy Ann and Andy came to Impersonation Day.
10. Remember the play about the three old women? Wasn't that the *crowner*!?
11. The very deserving winner of the coveted Alumni Ideals Award. That's our Margie, known in some circles as Marjorie Klein.
12. Some bus drivers just drive busses, but our Bill is different. He mails our letters, runs our errands, delivers us to our very doors—and *all* with a 10-million-dollar smile!
13. "The Game of Chess"—oh my goodness, look at that gun ! ! ! Oh well, it was only another Penthouse play.
14. Not to be confused with "angels" as defined by Webster.
15. And so we say good-bye to Whitworth for this year, but Miss Jenkins will be at her desk in September, waiting for *you* to come in with your registration card again.

GOOD-BYE FOR 1945





## MAY DAY



*May Queen:*

Betty Marcellus

*Honor Attendant:*

Joyce Warren

*Princesses:*

Heidi Horikawa, Isabelle McNeely, Helen Morrow,  
Marjorie Klein, Marjorie Johnson, Muriel Ausink,  
Mary Burkland and Tomiye Nishimoto.

## ACKNOWLEDGMENTS



During a War year, publishing an annual would be expected to be difficult. It would have been, if we had not been so fortunate as to receive the unreserved cooperation of our own Administration, and of Leo's Studio. Our hearty thanks go to them for making this book possible when innumerable difficulties would have made it impossible.

To Leo, we give our personal thanks. He was always willing to go the second mile.

To the members of the faculty and student body who have helped us iron our difficulties, we say Thank You.

To Dr. Warren in particular, who has worked with us in publishing this book, and who has made possible the use of the beautiful Supplement that follows, we say Thank You.

JEAN DUNCAN,  
Editor

JOHN WEBSTER,  
Business Manager



WHITWORTH  
COLLEGE

Spokane, Washington

*In this view-book an attempt is made to depict graphically some of the physical, the academic, and the campus life at Whitworth College. There is much more that cannot be portrayed even with the magic of the camera—the lovely location, the traditions, the friendly interest of the faculty members, and above all else the Christian atmosphere which permeates the entire College.*

This is an hour of unprecedented change in college curriculum and college life. It is quite possible that within the next few years much that has characterized the past in education will be radically changed.

Be that as it may, there will always be a demand for an education which takes in every part of man, which teaches students to meet life, not to evade it, and to come to grips with life's problems and solve them. There will always be a thirst for knowledge, a reaching out for that which is beyond and yet which is attainable, whether it be in the field of philosophy, music, religion, literature, languages, or science. In spite of changes which may come, we shall always study "the life of man in the light of God" ever seeking to measure life in terms of God's supreme manifestation, Jesus Christ.

It is for such an hour as this that Whitworth College has come to its acknowledged place of leadership and of influence. It has weathered the adversities of this present cataclysmic hour; it faces the unknown future with confidence and vision. We trust that these pages will help you to know and to understand your college.



Few colleges in the country have a more beautiful campus. Until 1913 Whitworth was located at Tacoma, Washington. A gift of over two hundred acres of beautiful, wooded land and substantial funds for the first buildings from Jay P. Graves, senior member of the Board of Trustees, brought about the moving of the College to its present favored location. Its position two and a half miles north of Spokane combines the beauty and quiet of the country with the advantages of a large city. Its seven large buildings are all surrounded with pine trees and lovely foliage.



Through these gates have passed thousands of young people in the years that are gone. During the current year close to five hundred young men and women have become members of the Whitworth family. Enter these gates with us and you will see campus and buildings, faculty and students. You will get at least a bird's-eye view of life as it is lived at Whitworth. We trust that to some degree you will also catch something of the spirit of the College, its youth, its maturity, its vision, and its purpose. And remember, it is a college dedicated to the great task of training for Christian leadership.





## BALLARD HALL

Women's dormitory, housing also administrative offices  
and science rooms.

## McMILLAN HALL

Rear view of McMillan Hall—women's dormitory and classroom building.





## McMILLAN HALL

An artistic example of Old English architecture. The future buildings on the campus will be designed to conform with this building, Ballard Hall, and the dining hall.

## WHITWORTH HALL

Comfortably houses forty students.





## JAY P. GRAVES HALL

Physical Education Building. Named in honor of Whitworth's greatest benefactor. It contains a regulation size gymnasium floor, the student offices and "commons," locker rooms and stage.

## DINING HALL

Also houses temporary chapel





Our own "White House," stately home of the president's family

Attractive residence of the dean and his family



"Model Home" of the Home Economics Department—foods laboratory, classroom, and living quarters.

# DORM LIFE IS SO INTERESTING



A chat in the Commons

Each dormitory room has its own personality.



One of several occasions when we mess up.

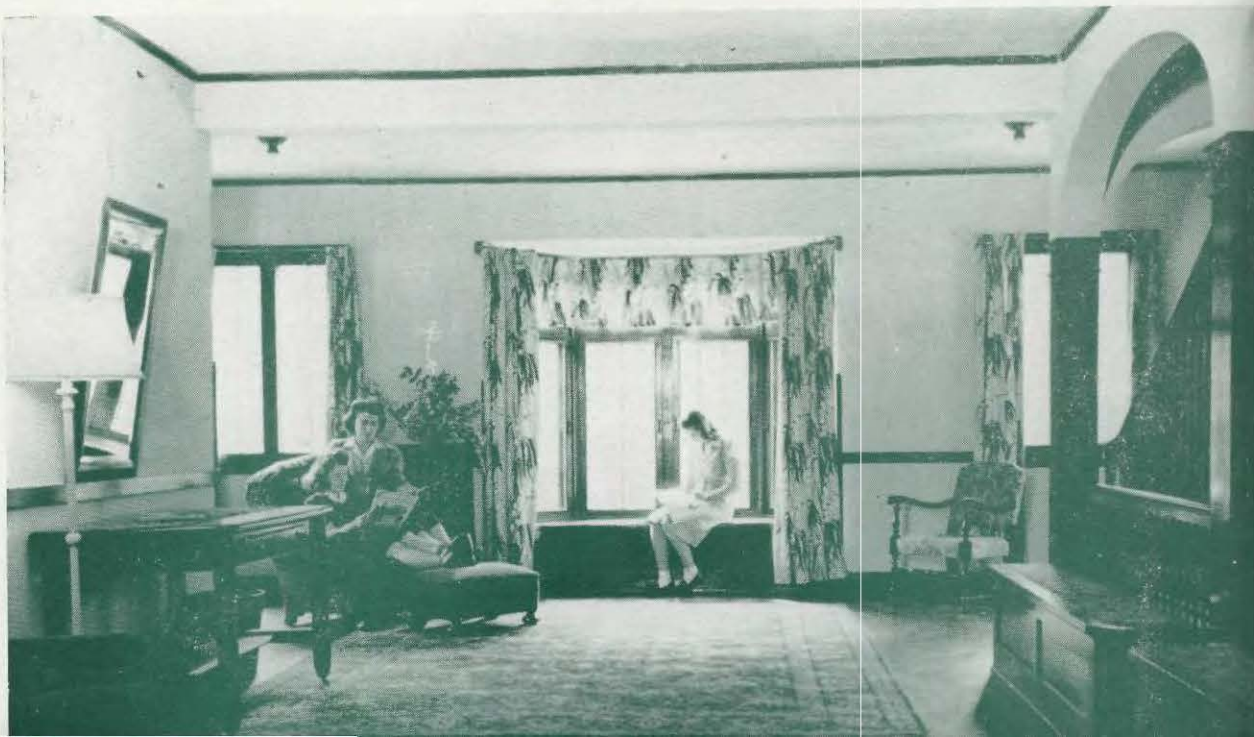


## WHERE WE LIVE

The four dormitories are well filled. Whitworth Hall at present houses women. With the return of our men, it will again be occupied by men. More dormitories are definitely needed.



Lounge on Second Floor of McMillan Hall  
Fifty to sixty women live in this building.



## OUR DINING HALL

Everyday SOCIAL LIFE in an educational institution centers largely in the dining hall where the student family gathers three times a day. Morning and evening the meals are served by efficient student waitresses. At noon luncheon is served cafeteria style.

The new dining hall, in use for the first time at the beginning of the current school year, has solved one of the great needs of the College. It will seat very comfortably 100, and in designing the building plans were made for another 100. A beautiful stage at the far end of the hall makes possible lovely music and formal banquets.

Well-planned meals, gay fellowship, birthday dinners, and many special occasions combine to make dormitory life very attractive. Plans have been made to complete the building some day, giving it a necessary reception room, three music studios, and fifteen to twenty practice rooms for the Music Department. To carry out such a plan will cost approximately \$35,000.



Interior View of New \$50,000 Fireproof Dining Hall





## MEMBERS OF THE FACULTY

First Row: Winifred McNair Hopkins, Gustav H. Schlauch, J. W. Counterline, Marion R. Jenkins, Merton D. Munn, Frank F. Warren, J. L. Oakes, Estella Baldwin, Francis T. Hardwick, Mark L. Koehler.

Second Row: Theron Maxson, J. A. Sutherland, Mrs. Loyd B. Waltz, Mrs. Rhea J. Strawn, Charles J. Tilley, Mary Boppell, John A. Carlson, Robert Hubach, Loyd B. Waltz, Ruth Gouldin, Lawrence E. Wilkins, Nicolin Plank, Mrs. Ray Edmunds, Ernestine Evans, Otto G. Bachimont. (Not in the picture, Oscar K. Dizmang, Alice Green.)





## MEMBERS OF THE FACULTY

First Row: Winifred McNair Hopkins, Gustav H. Schlauch, J. W. Countermino, Marion R. Jenkins, Merton D. Munn, Frank F. Warren, J. L. Oakes, Estella Baldwin, Francis T. Hardwick, Mark L. Koehler.

Second Row: Theron Maxson, J. A. Sutherland, Mrs. Loyd B. Waltz, Mrs. Rhea J. Strawn, Charles J. Tilley, Mary Boppell, John A. Carlson, Robert Hubach, Loyd B. Waltz, Ruth Gouldin, Lawrence E. Wilkins, Nicolin Plank, Mrs. Ray Edmunds, Ernestine Evans, Otto G. Bachimont. (Not in the picture, Oscar K. Dizmang, Alice Green.)

---

## *The Faculty*

### **Frank F. Warren**

M. A., D. D., thirteenth president of Whitworth, began his administration in June of 1940. He graduated from Seattle Pacific College, took graduate work in the Biblical Seminary of New York, and received his Master's degree from Drew University and his D. D. from his alma mater. Upon the completion of his training, he spent seven years in Japan in missionary and educational work. He was dean of the Department of Religion of Seattle Pacific College from 1934 to 1940.

### **Merton D. Munn**

Ed. D., University of Cincinnati; M. A., University of Michigan. He came to Whitworth as dean of the faculty and as teacher in Psychology and Education in 1941.

### **Otto G. Bachimont**

M. A., University of Iowa, has two years graduate work toward the Ph. D. He has taught languages at Whitworth since 1936. Born in Europe, his knowledge of German and French is extraordinary and of great value in his teaching.

### **Estella E. Baldwin**

M. A., Whitworth College, is graduate of the Bible Institute of Los Angeles and has been teacher of Bible and registrar at Whitworth since 1931.

### **Mary Boppell**

B. S., University of Washington, completing work for M. A. in Home Economics; teacher at Whitworth since 1941.

### **John Arvid Carlson**

M. S., University of Washington, has been teaching Mathematics and Physics at Whitworth since 1935.

### **Anna Jane Carrel**

M. M.; A. A. G. O.; Mus. B., Oberlin Conservatory of Music; Mus. M., Cincinnati Conservatory of Music. She is now completing work for Mus. D. at Yale; began her work at Whitworth in 1937.

### **James W. Counterline**

M. A., Parsons College; D. D. Buena Vista College; at one time missionary in Hawaii, at Whitworth since 1928 teaching Bible and Christian Education.

### **Oscar Kirk Dizmang**

M. A., University of Chicago, much work completed toward Ph. D. Teacher of Economics and Business Administration at Whitworth since 1935.

### **Jane Claire Dirks-Edmunds (Mrs. Ray)**

Ph. D., University of Illinois. Teacher of Biology since 1944.

### **Ernestine Evans**

M. A., Washington State College. Began her work in Secretarial Science in 1941.

### **Ruth Gouldin**

B. A., University of Washington. Women's Physical Education 1943.

---

★

**Alice Green**

B. M., Illinois Wesleyan University; Eastman School of Music. Organ and piano 1944.

**Francis T. Hardwick**

Ph. D., University of Washington; Ll. D., Whitworth College; Began his work in Education, Psychology, and Greek in 1929, has served as dean and as acting president.

**Winifred McNair Hopkins**

B. A.; Voice Diploma from American Conservatoire of Music, Fontainebleau, France. Teacher of voice since 1934.

**Robert R. Hubach**

Ph. D., University of Illinois. Teacher of English, Literature, and Journalism since 1944.

**Marion R. Jenkins**

B. A., Whitworth College; M. A., New York University. Dean of women and teacher of Christian Education since 1931.

**John Koehler**

B. A., completing work for Master's at University of Washington. Teacher of Art 1945.

**Mark L. Koehler**

M. A. and B. D., San Francisco Theological Seminary; Th. M., Princeton Theological Seminary. Head of Bible Department and teacher since 1943.

**Theron Maxson**

Ph. D., University of Southern California. Teacher of Philosophy, Psychology, and Religion since 1944.

**J. L. Oakes**

B. A., Colgate University. Business manager since 1942.

**Nicolin Jane Plank**

B. S., University of Washington. Botany and Chemistry 1944.

**Gustav Herman Schlauch**

M. A., Ph. D., University of Washington, former president of Spokane Junior College. Teacher of Sociology since 1942.

**Rhea J. Strawn**

B. A., Montana State University. Librarian 1943.

**James A. Sutherland**

B. D., Southern Baptist Theological Seminary; D. D., Dallas Theological Seminary. Director of Extension Department 1945.

**Charles Johnson Tilley**

M. A., University of Southern California. Teacher of History and Political Science 1943.

**Loyd B. Waltz**

M. A., University of Southern California. Speech and Drama at Whitworth 1944.

**Mary Elizabeth Waltz (Mrs. L. B.)**

B. A., Willamette University. Teacher of piano.

**Lawrence E. Wilkins**

Ph. D., University of Southern California. Chemistry 1944.



Center of Interest—The Bulletin Board

Corner of library now housed in McMillan Hall.  
Plans for new library now under consideration.





Students at Whitworth are fortunate, for they study with friendly, competent teachers. Dr. Schlauch teaches sociology.

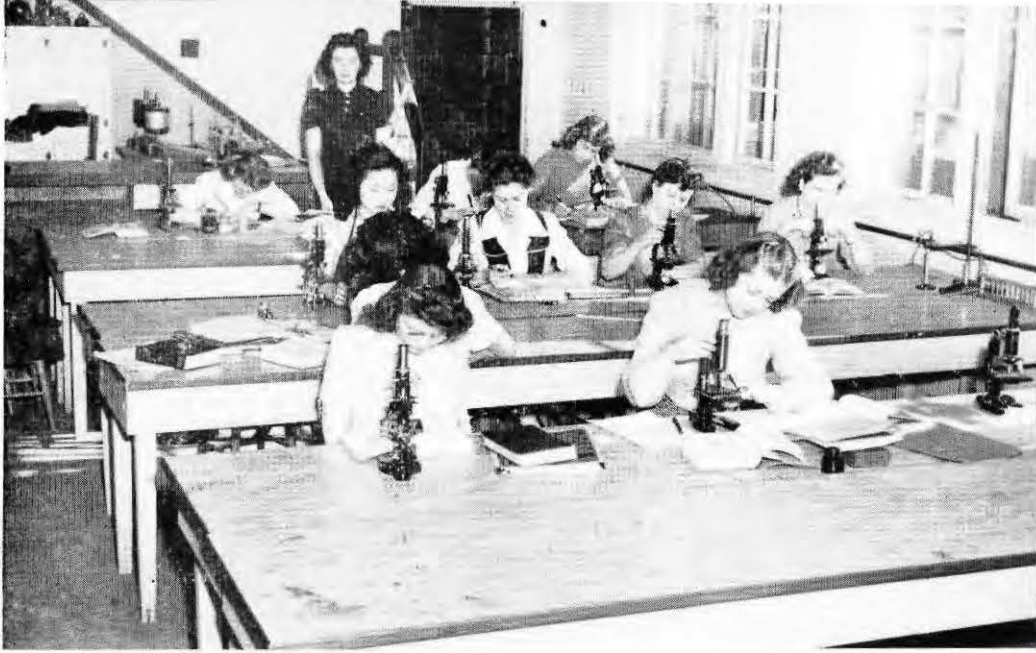


The College has its Department of Secretarial Science. Many students "earn while learning."



A homey corner in the home economics laboratory. Cooking scientifically is an art.

A group of cadet nurses studying life under a microscope. Whitworth pre-medical offerings are well recognized.

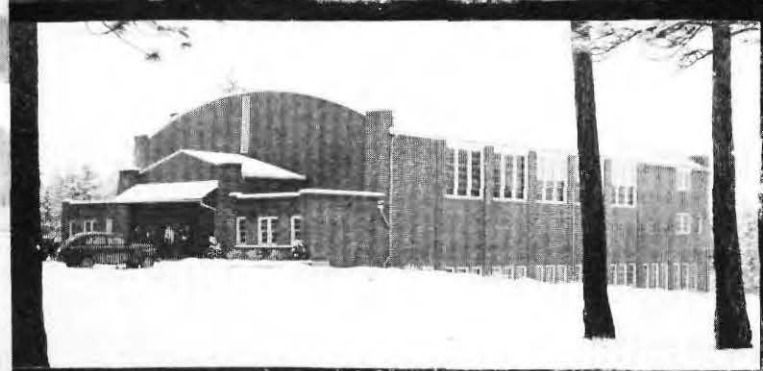


Dr. Hardwick and students examining equipment of the psychological laboratory.



Our Home Economics majors are much in demand as teachers and wives.











## DEACONESS HOSPITAL, SPOKANE, WASHINGTON

The College enjoys a very happy relationship with this well-known Methodist hospital. During the past year nearly one hundred young women have taken their training under the United States Cadet Nurse Corps on the campus at Whitworth and are now in training at the hospital. The College is very happy that it has been able to serve the country in this needed capacity, and it is quite possible that there will be from now on an enlarging of the pre-nursing course at Whitworth.



Second Class of United States Cadet Nurse Corps

Nurse Takes a Blood Count





Winifred McNair Hopkins, voice teacher, shows our basso how to round out those low notes.

Many Whitworthians have chosen music for their major study. They have become teachers of music and performers of real merit.

Mrs. Hopkins leading college chorus.



College Chorus



An organ and a practice organ make possible the training of many church organists.



Many Whitworth students have developed into excellent pianists under the inspiring teaching of Mrs. Carrel.



The Music Department at Whitworth consists of several well-trained teachers. Mrs. Loyd Waltz instructing.



## *The College Looks Ahead*

Visitors to Whitworth inevitably comment on the spacious campus, the lovely trees, and the favorable location. As they inspect the buildings, however, often they are heard to remark, "The College needs an administration building and a library." This is unmistakably true, and looking ahead to the greater days of service to youth, plans are already under way for the construction of these two important additions to the campus. Announcements have been made that \$250,000 will be raised for the construction of the building which will house offices, classrooms, conference rooms, and an auditorium seating 800 to 1,000 people. Work will commence as soon as funds and materials are available.

A large, comfortable library built to house 60,000 or 70,000 volumes, adequate reading rooms and visual education facilities must be constructed. The present size of the student body demands the full utilization of every available inch of space in the present library. It is the hope of the administration that such a building may be erected as a lasting memorial to some loved one. The construction of these two buildings and, at a later date, of a new women's dormitory and a science hall will give the College not only an outstanding campus but also a plant adequate, spacious, and beautiful for a student body of 500 to 600.

THE COLLEGE LOOKS AHEAD to the return of its men and the enlarging of those departments which train men for life. There will be a greater demand in the fields of mathematics, science, and aeronautics than ever before. The proximity of a large airfield will mean the possible offering of such courses. As our men return we shall also enlarge our pre-medical offerings, for on the basis of our enviable record in the past we know that our men and women will be in the best medical universities of the country.

Throughout the entire West there is the general acknowledgment that Christian education has its greatest opportunity, its greatest day just ahead. As a leading Christian college Whitworth is rapidly taking its place of leadership in this field. Its present student body, loyal alumni, and hosts of interested friends augur well for the future.

## *Religious Life Has a Major Part at Whitworth*

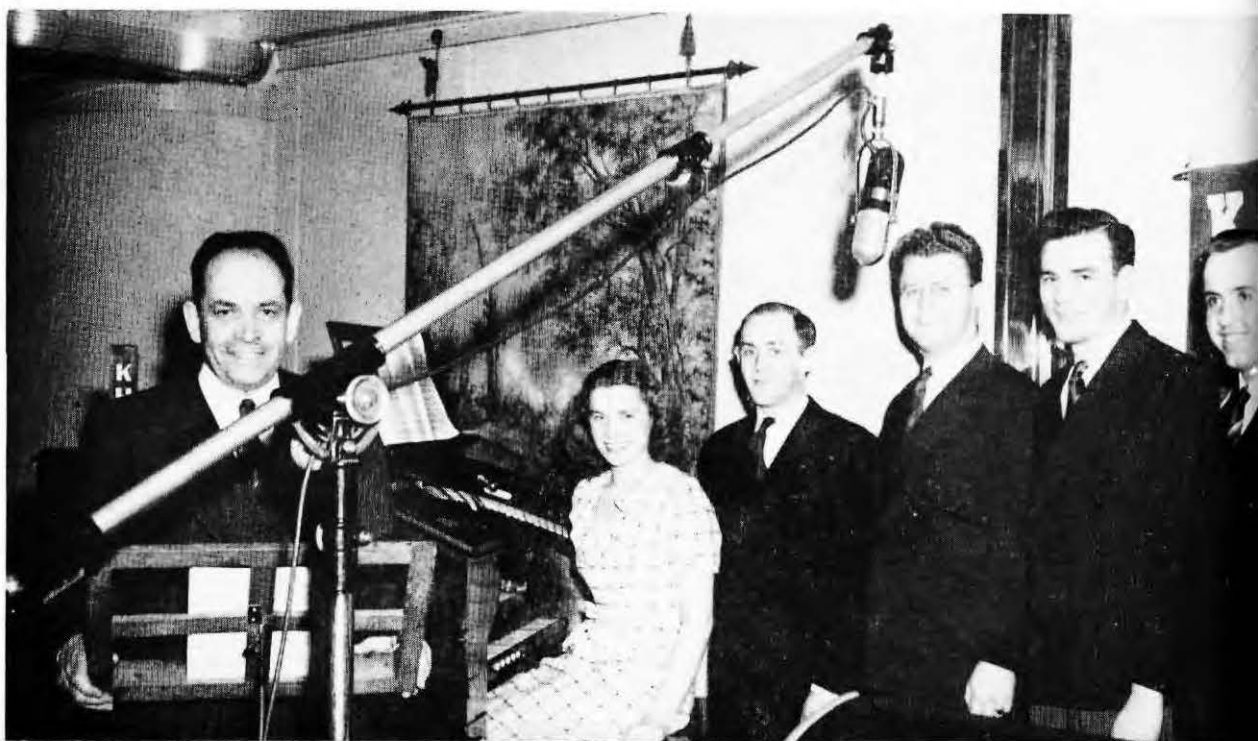


Professor Koehler is also college pastor.

A Christian college must have in its program a definite place for religious expression. Classes in Bible, many student organizations, stated chapel services, and Sunday worship all combine to make religion at the College a normal, attractive experience. Its primary purpose to provide a broad education under conditions which develop Christian character.

### The Well-known "Chapel Hour"

For five years Dr. Warren and his singers have conducted each Sunday morning at nine o'clock over radio station KHQ a program known as "The Chapel Hour." Covering the entire Inland Empire, it has proved to be a great medium of religious expression and an asset of invaluable worth.





The Chapel Hour at the College is one of inspiration, entertainment, instruction. Not only are outstanding speakers brought to the campus, but faculty members and students alike take part in the frequent services.







The completion of Jay P. Graves Hall has given Whitworth College excellent equipment for physical education. Although it has been a number of years since Whitworth has engaged in football, yet through boxing, jujitsu, and competitive games our men receive their P. E. training.

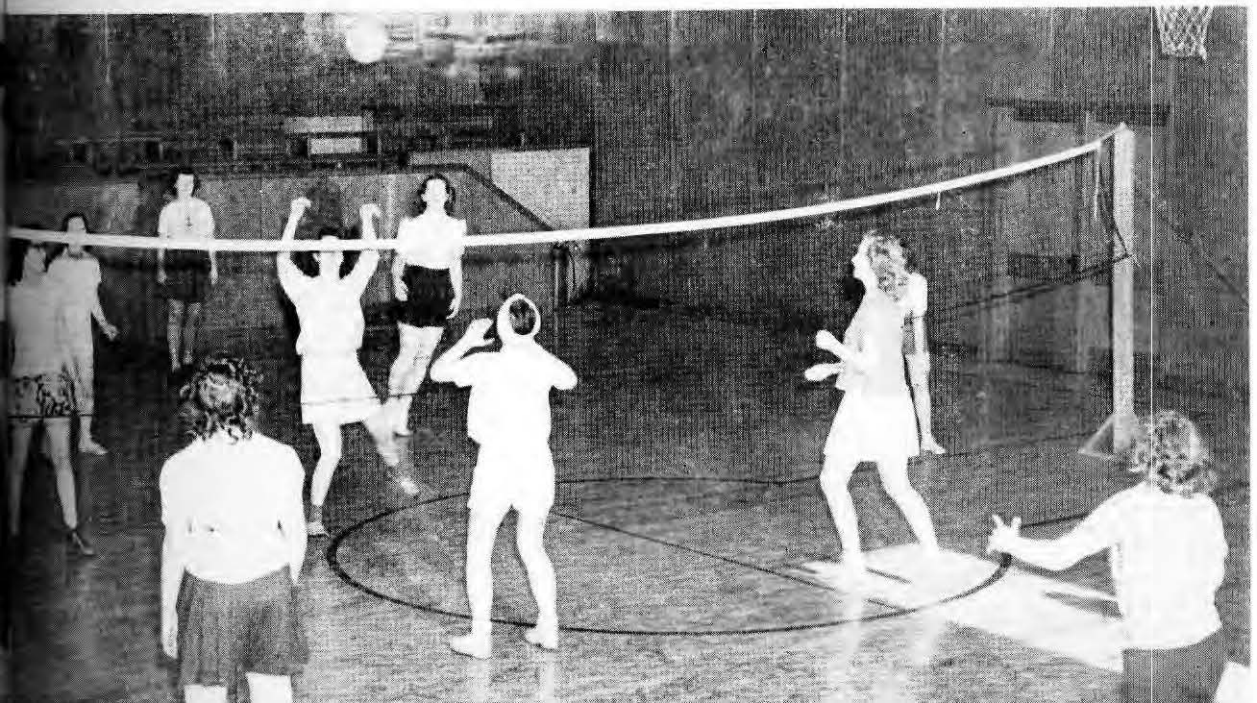
A slogan at the College for years has been, "Whitworth Builds Men."



The largest playing floor in the Inland Empire is at Whitworth. Basketball is a favorite sport, and the College should in the near future become a college of champion teams.



A full-time, well-trained instructor supervises the recreational program of the many Whitworth women.





*A Varied Athletic Program for Women*



*The Champ*





Spokane is situated in the heart of the great Inland Empire and rightly takes its place as one of the great and growing cities of the Far West. It now has a population of about 150,000 people, but because of its strategic location and the development of Eastern Washington, because of the mighty waters of the Columbia, it is destined to become an even larger city. From Spokane one sees to the north the mountains of Canada, and to the east the lofty ranges of Montana's mountains. Through the heart of the city flow the swift-moving waters of the Spokane River.

---

Wandermere, a beautiful little lake less than two miles from the campus, with excellent swimming in the summer and skating in the winter.



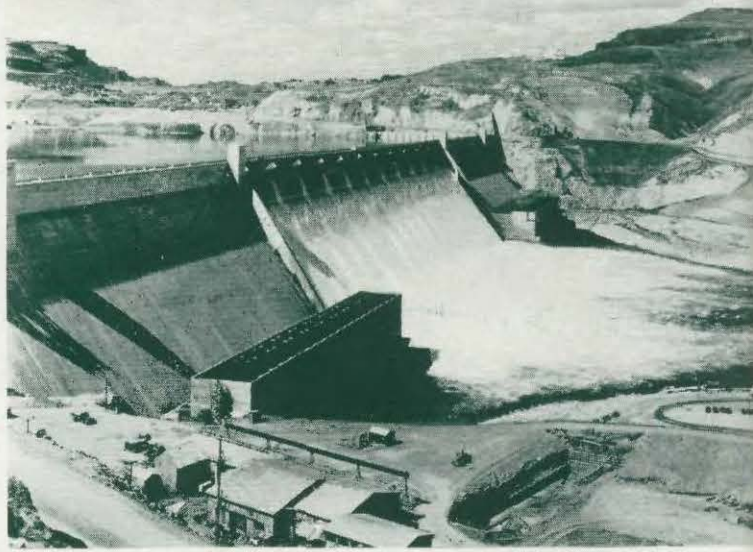
Mt. Spokane is a prominent peak visible from the campus of Whitworth. From its summit is gained a glorious, panoramic picture of the Inland Empire.



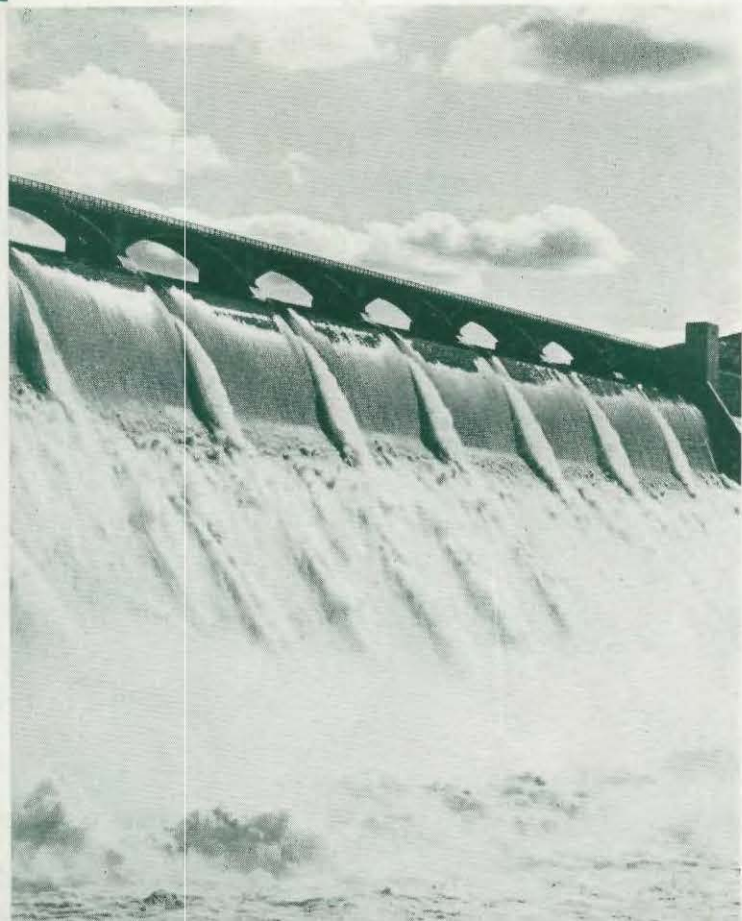
Students driving to the snow-crowned summit of Mt. Spokane through huge drifts of whiteness.

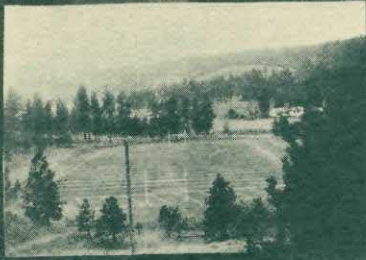
Lovely picnic grounds on the picturesque shores of the Spokane River.





Two views of mighty Coulee Dam, the greatest project of construction ever undertaken by man. Not only will untold power be generated to set in motion the wheels of industry, but tens of thousands of acres of land will soon be under irrigation and "will blossom like the rose." Whitworth is fortunately located, and its growth will be in keeping with the predicted expansion of the great Inland Empire.

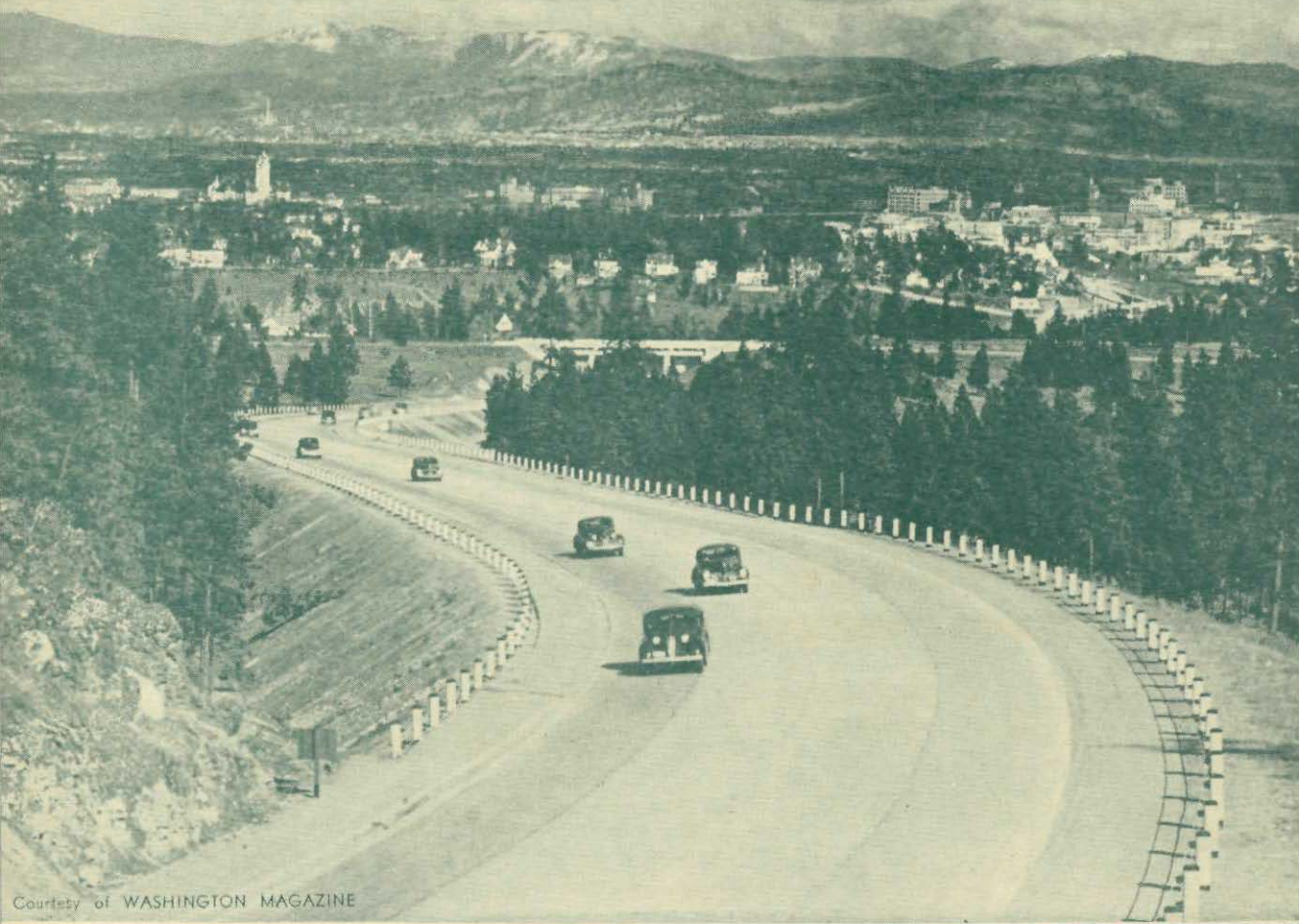






# Spokane . . .

A scenic view of this Inland Empire metropolis as one enters from the southwest on the Sunset Highway.



GOOD LUCK AND BEST WISHES

TO THE GRADUATES!



The chaos of today's world bears witness to the need of Christian Education.



**McGOLDRICK  
LUMBER COMPANY**

Spokane, Washington

CONGRATULATIONS

GRADUATES:

"May His Peace be upon you."



Today our thoughts turn to those women of Whitworth, who in the Cadet Nursing Corps, are preparing to fight for the lives of our loved ones.

May you all return speedily.



**POSTELL PRODUCE  
COMPANY**

## GRAHAM'S

a most unusual store for WOMEN

and a most useful store for MEN

**Congratulates all Whitworth Seniors**

**John W. Graham & Co**  
If Its Made of Paper We Have It

707-711 Sprague Avenue

708-716 First Avenue

### READY TO HELP WITH YOUR POST-WAR PLANS

With free enterprise given the "go ahead" the Washington Water Power stands ready to help you realize your post-war plans.

Today the Washington Water Power is delivering Grand Coulee Power to war industries.

Tomorrow the Washington Water Power could deliver Grand Coulee power to farms, homes and industries alike.

### **The WASHINGTON WATER POWER COMPANY**

A Self-Supporting, Tax-Paying  
Business Enterprise

"Life is a measure to be filled—  
not a goblet to be drained."



**BEST WISHES TO ALL  
WHITWORTH STUDENTS  
AND FACULTY**



**A & K MARKETS**

You are always sure of a

SQUARE DEAL at

## **SARTORI**

Master Craftsman in Jewelry

N. 10 Wall

Spokane, Washington

## **WYLIE - CARLSON**

PRESCRIPTION  
DRUGGISTS



The Store of Personal Service

Phone Main 1188

Sprague at Wall

Spokane

Washington

WOODWORK . . . LUMBER

BUILDING MATERIALS



**EXCHANGE LUMBER  
AND MFG. COMPANY**

CONGRATULATIONS

to the Grads—

and GOOD LUCK  
to the Underclassmen



**TULL & GIBBS**

Spokane's Complete Home Furnishers

FIRST at WALL

The Best in Life to the  
GRADUATING CLASS OF 1945.

**CENTRAL  
CONSTRUCTION  
COMPANY**

GENERAL CONTRACTORS

W. 918 Mallon Avenue  
Phone Broadway 2755

**BURGAN'S**

Economy Stores of the Inland Empire



YOU'LL SAVE AT BURGAN'S

36 Stores in the Inland Empire

Good Luck and Best Wishes to  
the Graduates.

**EUGENE'S FLOWER SHOP**

Remember Your Best Girl with Flowers  
from Eugene's

N. 7 WALL      MAIN 1173

Kuppenheimer Clothes - Arrow Shirts  
Stetson Hats at

**FOGELQUIST'S**

CORNER SPRAGUE at HOWARD  
Spokane      Washington

**CORBIN PARK CLEANERS**

"WEAR CLEAN CLOTHES"

Congratulations to the Graduates

N. 2814 Monroe      Phone Brdy. 2775

Our Compliments to You—Class of '45

**FRANK H. LAWTON & SON  
PRINTERS**

N. 608 Monroe      Spokane  
Broadway 0150

Congratulations, Seniors . . .

**MATTHEWS & KERR INC.**

Spokane

PACKERS OF M & K BRAND COFFEE  
HOTEL, RESTAURANT, and  
INSTITUTION SUPPLIES

**HULL-RODELL MOTORS**

De Soto . . . Plymouth  
Federal Trucks

COMPLETE AUTOMOTIVE SERVICE

1102 Sprague      Spokane, Wash.

For Your Fuel Needs Call

BROADWAY 2101

SIZZLING HEAT HEADQUARTERS

**GREAT WESTERN FUEL**

E. 222 DeSmet

BEST WISHES TO THE STUDENTS AND  
FACULTY OF WHITWORTH COLLEGE

**IDEAL LAUNDRY  
and  
LUSTERIZED CLEANERS**

E. 17 Boone

Spokane

**MILLER-DERVANT COSTUMES**

1015-1017 W. Riverside

Main 6642

**KNAPP BOOK STORE**

Materials for Sunday Schools and Bible Study

PEYTON BUILDING

**LA ROSE GROCERY**

"Everything for your dorm snack or picnic"

Phone Glen. 6539

**CONGRATULATIONS**

to the Graduates

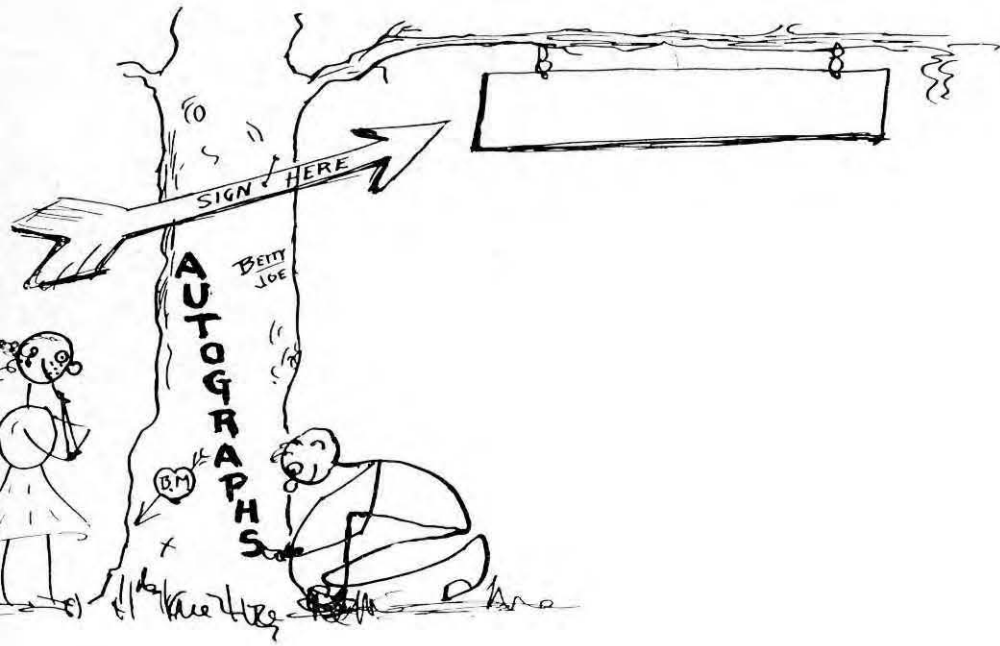
from

**LEO'S STUDIO**

UNIVERSITY PLACE

Spokane, Wash.

Our specialties are school pictures,  
Annuals and Kodak  
Finishing



SIGN HERE

ACHTUNG

BETTY JOE

BM