

1944

## Natsihi Yearbook 1944

Whitworth University

Follow this and additional works at: <http://digitalcommons.whitworth.edu/yearbooks>

---

### Recommended Citation

Whitworth University, "Natsihi Yearbook 1944" Whitworth University (1944). *Natsihi Yearbook*. Paper 19.  
<http://digitalcommons.whitworth.edu/yearbooks/19>

This text is brought to you for free and open access by the University Archives at Whitworth University. It has been accepted for inclusion in Natsihi Yearbook by an authorized administrator of Whitworth University.

1944

## Natsihi Yearbook 1944

Whitworth University

Follow this and additional works at: <http://digitalcommons.whitworth.edu/yearbooks>

---

### Recommended Citation

Whitworth University, "Natsihi Yearbook 1944" Whitworth University (1944). *Natsihi Yearbook*. Paper 19.  
<http://digitalcommons.whitworth.edu/yearbooks/19>

This Book is brought to you for free and open access by the University Archives at Whitworth University. It has been accepted for inclusion in Natsihi Yearbook by an authorized administrator of Whitworth University.



40 net

# *The Natsihi*

*Published by the*

*Junior Class*

**WHITWORTH COLLEGE**

*Spokane, Washington*

*June, 1944*



TO

WHITWORTHIAN

IN THE

WE SERVICE

DEDICATE

THIS

ANNUAL

# INTRODUCTION



*"Hail, Whitworth College, hail, ever hail.  
Long may thy banner victorious wave.  
Thy sons and daughters, loyal and brave,  
Hail thee forever, hail, Whitworth, hail."*

Good afternoon, friends. You are listening to the program, "Echoes From the Pines," originating on the campus of Whitworth College.

The theme of today's presentation is "Whitworth College in the Service." In this program, brought to you by the student body of the college, we will give you a resume of the activities of the student body for the year. You will hear events and personalities described. You will become better acquainted with these personalities as various individuals step to the microphone and tell you how they and the organizations for whom they speak are serving their college, their country, and their Christ. It is our hope that as you listen to this program you may become thoroughly acquainted with "Whitworth in the Service."

First of all we would like to tell you about that splendid group of men whom we consider an integral part of Whitworth College—men now in the service of Uncle Sam—Whitworth men in the armed forces!

In the last two years (in the previous school year especially), the majority of our men have been called from the campus to the colors. Some have exchanged their cords, for the duration, for khaki; others for blue; and still others for olive drab. Some have exchanged their status of college student for that of cadet, sergeant, petty officer, lieutenant, or ensign. Some have traveled from this college to the perilous waters of the South Pacific. Others are in England; some in Africa. But wherever they are, we consider them members of the college, for we know that they cherish the memory of their experiences here, and that many of those who have not graduated look forward to coming back to resume their roles as Whitworth college students after the war.

Listen now to the impressive roll call of those who left college for the service this year and last.

Brask, Robert—Army  
Blodgett, Robert—Army  
Brincken, Glenn—Army  
Burkhart, Alvin—Army  
Bye, John—Army  
Byquist, Richard—Navy  
Coates, Homer—Army  
Davis, Maurice—Navy  
Dean, Gerald—Army  
Diamond, Roy—Navy  
Edwards, Robert—Navy  
Forkner, Vernon—Army  
Forland, Lawrence—Army  
Frost, John—Navy  
Fulkerson, Euell—Marines  
Gothberg, Loren—Army  
Grams, Paul—Navy

Groves, Amon—Navy  
Gwinn, Stanley—Navy  
Harrison, Dean—Navy  
Henker, Donald—Navy  
Hendrickson, Robert—Army  
Holder, Louise—Marines  
Hull, Hubert—Army  
Jenkins, Hobart—Army  
Jones, Tom—Navy  
Klefstad, Ray—Army  
Ladd, Harry—Navy  
Lancaster, Donald—Army (Deceased)  
Lee, Robert—Army  
McGrath, Robert—Navy  
Medley, Keith—Navy  
Merkel, Paul—Navy  
Messex, Lewis—Marines



Moos, Marvin—Army  
Munce, Warfield—Navy  
Paeth, Robert—Navy  
Paeth, William—Army  
Patten, Leslie—Army  
Peterson, James—Marines  
Philo, Merlyn—Army  
Riley, Rolla—Marines  
Robinson, Douglas—Navy  
Rodkey, George—Navy  
Roestel, Ray—Army  
Rosenkranz, Russell—Army  
Ruby, Robert—Army  
Savage, Robert—Navy  
Schlauch, Bill—Navy

Shreve, Robert—Army  
Scott, Everett—Navy  
Skeels, Margaret—Marines  
Smith, Sam—Navy  
Starrett, Jack—Army  
Steele, Donald—Navy  
Swanson, Joel—Coast Guard  
Thorndike, David—Navy  
Vinther, Paul—Army  
Walther, Paul—Marines  
Welch, John—Marines  
Williams, Dale—Navy  
Whimpy, Harold—Navy  
Wood, Donald—Navy  
Yates, Leslie—Army

ROBERT EDWARDS—transfer from Junior College—was a “W” Club member and an inspiration to everyone on the campus with his humor and wit. Bob is at present a Seaman 1st Class Aviation machinist’s mate doing his part for victory.

ROBERT BLODGETT—better known as “Fuzzie”—rated as the top-scoring man of Whitworth in basketball. His laugh for everyone won him the title of all-round college fellow. As a Pfc. in the headquarters of General MacArthur in Australia, Bob is keeping the colors flying.

EVERETT SCOTT—“Scottie”—coached the Junior Varsity basketball team through a very successful year. He also took an active part in music. After his preliminary training at Farragut he was sent to Quartermaster’s School and now has a rating as Seaman 2nd Class.

ROBERT RUBY—an up-and-coming young doctor with personality plus and a very special knack of getting interviews—is proving his ability at St. Louis, Missouri.

KEITH MEDLEY—with only one year at Whitworth—made a name for himself as an outstanding student in the Pre-Medical field and is now in the U.S.N.R. Pre-Med. program at Whitman College.

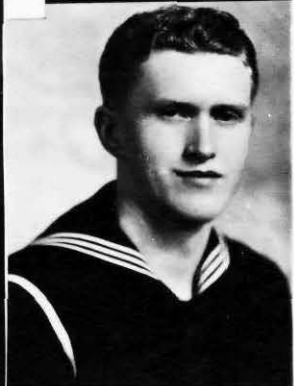
LOUISE HOLDER—graduate of Whitworth in ’43 as Business Administration major—is now serving her country in the U. S. Marines at Paris Island.

ROBERT LEE—member of the first team in basketball at El Paso, Texas. After the closing of A.S.T.P. he was sent to Camp Barkley, Texas, and is now in the 17th Armored Battalion.

JOEL SWANSON—a chemistry major—has advanced to the rank of Seaman 1st Class in the Coast Guard and is serving over seas.

MAX DAVIDSON—a loyal Montanian who proved himself an all-round Whitworthian. His main interest was in Pre-Med. Max is now serving his country in the Army of the U.S.A.

GLENN BRINKEN—Whitworth athlete, who in the service has added to his record as a star player in basketball. After the closing of A.S.T.P. he was transferred to the 10th Armored division at Camp Gordon, Georgia.





ROBERT SHREVE—a lover of classical music and also a member of Alpha Chi. He is now serving in the Infantry in Hawaii.

BILL SCHLAUCH—a transfer from Junior College in '42—was an added inspiration to the basketball team. Bill is now stationed at Columbia, where in four months he will receive an ensign's commission as Deck Officer.

HOMMER COATES—now private in the Medical Corps in England. He received his training at Camp Barkley, Texas.

HUBERT HULL—who served as manager of the basketball team through a victorious year. Hubert entered the Army Air Corps in April, '44, and is stationed at Amarillo, Texas.

DAVID THORNDIKE—"Throckmorton"—with his high intellect was commissioned from Notre Dame as Ensign of the A-V (S) U.S.N.R. Now he is stationed at the Naval Academy at Annapolis for work in aerology at this graduate school.

JOHN WELCH—a chemistry major—is studying jungle tactics at Paris Island, South Carolina, in the Marine Corps.

DON LANCASTER (Deceased)—Army "A" student who won our admiration for his sincerity and ability. One of our star tennis players who also participated in music. His army training was taken at Utah State Agricultural School in the Air Corps.

BOB HENDRICKSON—a chemistry major in college is now studying to be a radio operator at Scott Field, Illinois.

PAUL VINTHER—a striking Spokane student majoring in pre-engineering—is at present an instructor with the rating of Soundman 2nd Class in the Sound equipment school.

STAN GWINN—outstanding in sports, especially tennis—is now in midshipman's school at Plattsburg, New York, awaiting an ensign's commission as Deck Officer.

PAUL MERKEL—"Merk"—with his hearty laugh was a popular figure on the football field. After attending Whitman College he was sent to pre-midshipman school and is at present in Chicago to be commissioned as Ensign.

HOBART JENKINS—chemistry major—will graduate in May as 2nd Lieutenant from Lubouch, Texas, as a pilot of bombardment aircraft.

LESLIE YATES—engineering student—used his knowledge at Stanford University and in the South Dakota School of Mines, but with the folding of ASTP is now in the Signal Corps at Camp Crowder in Missouri.

RICHARD BYQUIST—that champion tennis player at school—has proved himself worthy as Navy Physical and Recreational Instructor at Bainbridge, Maryland. He will shortly graduate with Petty Officer's rating.

AMON GROVES—now stationed at Sand Point in Seattle in the Navy Air Corps.

RAY ROESTEL—Whitworthian, who will graduate in May as a pilot of a twin-engine bomber from Chandler, Arizona.

MAURICE DAVIS—who made use of his talent by playing the piano and tennis, now has the rating of a Petty Officer and is stationed at Sampson, New York.

HAROLD WIMPY—a Spokane fellow now serving the Navy and stationed at Camp Waldron, Farragut, Idaho.





# ARMY PROGRAM



Here is the man who can tell us about the Whitworth War Training Program that was in effect this past year. He is Dr. Merton D. Munn, Dean of the College and Co-ordinator for the army training program.

“Dr. Munn, just when did this program get under way?”

“The first group of men to be trained as instructors arrived in August of last year.”

“And how many men were enrolled at one time?”

“The plan was to have 90 men constantly enrolled, 45 being graduated and 45 being entered every two months. Altogether about 290 non-combat aviation students were housed in the men’s dormitory and the nearby annex which were prepared for them last summer.”

“Were there commissioned officers on the campus?”

“Yes, commanding officer, Captain H. E. Snead, and Adjutant 2nd Lieutenant R. C. Mueller were stationed here during the entire period. As aides here were six non-commissioned men.”

“Want to tell us something about the course of study these men followed?”

“All this work was conducted in separate classes taught by a specially trained staff, although I did some instructional work in psychology. The subjects studied included theory, technique and psychology of instruction; civil air regulations, navigation, meteorology, airplanes and airplane engines (power plants). Their actual flying was done at Calkins airfield.”

“What was the relationship of these men to the college?”

“We considered them our own students. The men played on our basketball team and took part in our student affairs whenever possible. You remember that last winter during our Kampus Kapers they put on their own musical entertainment for us.”

“When did they leave?”

“The instructor program closed on January 5. We were sorry to see them go.”

“Yes, Dean Munn, we were sorry to see them go. However, Whitworth will be very busy again aiding Uncle Sam when the cadet nurses arrive.”

## WHITWORTH WAR TRAINING SERVICE

*Captain Snead, 1st Sgt. Fliss.*

## STAFF

*First row: Captain Snead, Lt. Mueller. Second row: Staff Sgt. Jones, Sgt. Mace. Third row: Cpl. Allred, Sgt. Alms, 1st Sgt. Fliss, Tech. Sgt. Kidd.*

## CHRISTIAN ENDEAVOR



Here's Johanna Briggs to tell us about Christian Endeavor for this year.

"Hello, all you Whitworthians and friends of Whitworth! I suppose you know that Christian Endeavor is the largest organization on the campus and this year we have really been doing things. I don't want to be held responsible for it though; everybody helped.

"They raised the money for our contribution to Jewish missionary work in San Francisco, and to the Service Men's Christian Welcome House in Spokane. They wrote monthly letters to the service men, sponsored a chapel program, and frequently on Sunday afternoons got together a group to visit the Old Folks Rest Home with songs and messages of cheer."

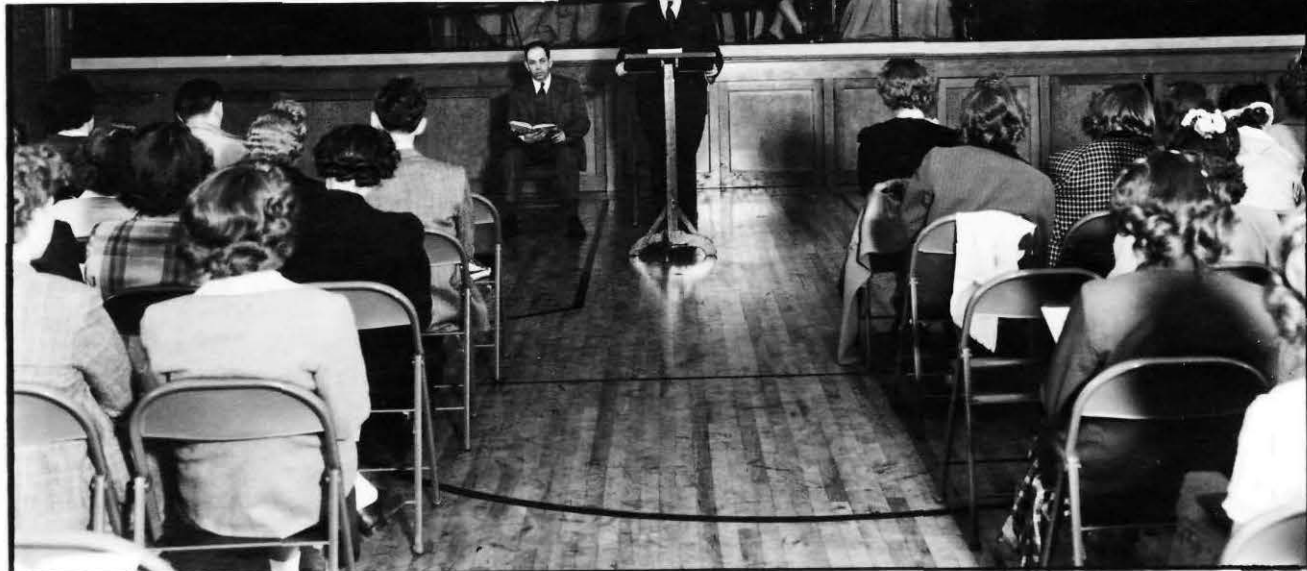
"But, Johanna, didn't you have any social activities? All you have mentioned so far pertain to service."

"Yes, indeed, we had a grand time Christmas caroling and at the party we held in honor of the birthday of the International Christian Endeavor. Our visits to the Old Folks Home were fun too. I see I have only a minute remaining and I mustn't forget to mention the splendid group of officers I had working with me: Tetsuo Saito, vice president; Marilouise Dowdy, secretary; Warfield Munce, treasurer; Helen Ghormley, program chairman; Anita Lewis, missionary chairman; Betty Ann Douglass, music chairman, and Helen Jo Jamieson, social chairman. Those boys and girls really did a good job."

"And you did a good job too, Johanna. We are all proud of you and we thank you very much for appearing here today."



C. E.—*First row:* Senda, Ruby, Ito, Green, Burkland, Zutrau, Compher, Hammersburg, Weyrick, Williams, Davis, Ghormley. *Second row:* Saito, Douglass, Briggs, Tharp, Budd, Deckert, Boggs, Ausink, Mrs. Carrel, Evans, Nance, Zenier, Harrison, Bauer, Huffman. *Third row:* Nothwang, Fiddler, Frick, Hoff, Morrow, Lewis, Reeves, Pruter, Kreitlow, Beggs, Reynolds, Schauble, May, Johnson, Zenier, Wood. *Fourth row:* Munce, Brown, Hasagawa, Logsdon, Dietz, Falk, Huntley, Hubel, Lehn, Bovee, Dowdy, Wacker, Shepherd, Specker, Stueckle, Barnes, Farthing, Nix.





## WOMEN'S CONFERENCE



"Hello there, Virginia. Won't you tell us a little about Women's Conference? How did you manage to go away for your conference this year with gasoline and automobiles so limited?"

"Well, we had some mighty perplexing problems to solve there, not only with transportation but also with food. But God was watching over us and leading us in everything we did."

"Where did you have your conference this year, and when was it?"

"The date of the conference was October 15 to 17. Camp Gifford at Deer Lake. It was quite secluded and yet on a good beach so that the girls had opportunity for boating and swimming. Brr! I don't see how they survived the swimming; it was a bit chilly, to say the least."

"We were very fortunate in getting Mrs. Robert N. McLean and Mrs. Carroll M. Hull, both of Yakima. They brought us inspiring and thought-provoking messages that we shall long remember. Yet above anything that was said by any individual at the conference, we remember the blessed presence of God that was keenly felt by all. You know, in spite of all the difficulties we encountered, this year's conference was the largest since Whitworth women began having Bible conferences."

"Friends, that was Virginia Hodge, chairman of the Women's Conference central committee. Other members of the committee were Betty Ann Douglass, Laurretta Holder, Lillian Stokes, Florence Ann Reynolds, Esther Brown, Virginia Hunt, Helen Hartley, Yvonne Green and Isabelle Mise. Miss Jenkins was adviser."

### WOMEN'S CONFERENCE COMMITTEE

*First row: Holder, Reynolds, Jenkins, Green. Second row: Douglass, Hunt, Brown, Stokes, Mise.*

## SPIRITUAL EMPHASIS WEEK



The best person to talk to about Spiritual Emphasis Week is Professor Koehler, who was in charge of the whole program. And here he is.

"Professor Koehler, tell us something about Spiritual Emphasis Week. Who was the speaker?"

"He was Dr. Dale D. Welch, president of Dubuque University at Dubuque, Iowa. Dr. Welch has had many years of experience with young people and he understands their problems. He certainly proved that in his interviews with the students."

"What would you say, Mr. Koehler, determines the success of a Spiritual Emphasis Week?"

"I'd say that you can't put your finger on any one thing that makes it successful. Certainly Dr. Welch filled the bill, though. His messages were concise and to the point, and they were backed by a lifetime of sincere Christian living.

"The students took charge of prayer meetings, which began more than a month before Dr. Welch arrived and continued through the week. They also provided the special music which made for a worshipful atmosphere.

"But in addition to the planning and work that was done on the campus, our week owed its success to the band of prayers which extended all around the world and reached to Almighty God in behalf of our students, that those who did not know the Saviour might find in Him their refuge, and that those already Christians might deepen their spiritual life. This was indeed a week of spiritual emphasis."

*Center Photo: Left, Dr. Welch. Right, Mrs. McLean and Mrs. Hull.  
Bottom Photo: Spiritual Emphasis Week.*

# THE PRESIDENT'S MESSAGE



## LOOKING AHEAD

For a number of years it has been customary when preparing our Annual to make it retrospective, for naturally it reflects the struggles, victories, and rich pleasures of the year that is gone. As president of Whitworth College, I find, however, that I am not so concerned this moment with the past as I am with the future. We who have been on the campus at Whitworth during the year that is gone will never forget it, for it has proved to be a year of unparalleled blessings, of some problems, and of unprecedented progress. For these we are deeply thankful. Yet what of the future?

To be sure, as we face the months just ahead, we cannot see a great change over the conditions which characterized this past year. Nevertheless, we are looking ahead not to the unfinished battles of this war, but to the peace which surely will be ours. What of the men who made up the student body of Whitworth just a few years ago? Today they are to be found in all parts of the world occupying places of great responsibility. Surely, in the providence of God many of them will yet come back to the college of their choice in order that they may prepare not for death and destruction, but for life. Some of them will never come back, and our hearts are heavy as we think of the supreme sacrifice that they have made for the sake of their country. Ours is the task at Whitworth to make sure that when the last shot has been fired and the last bugle has sounded, the men who will be marshalled out of the army will be able to come back to the college they loved and of which they have dreamed during the months and years of separation.

We look ahead today to the greatest days Whitworth College will yet know—days of growth when our college will rightly take its place among the leading Christian colleges, numerically and in influence and standing, in the entire country. We look forward to the day when our incomparable campus will contain new buildings better fitted to house a larger student body—buildings that will reflect in their beauty and equipment the dreams of the founders of Whitworth that it indeed might some day be a great college. We look forward to the day when we shall give to the world, leaders of peace and builders in the greater Kingdom, even as we have been called to give our sons that they might be commanders of men in the battles of the world.

The past is fragrant with memories of a college which has endeared itself to generation after generation of young people. The present is characterized by a new day in the history of the college—a day that is clear of the burden of debts and marked by physical expansion. We look forward on this glorious day of spring to the era of peace when Whitworth College will house on its campus a great host of men and women who believe that the best in education must be built upon the foundation of true righteousness and that life reaches its highest and best in the knowledge of God through Jesus Christ, His Son and our Saviour.



DR. FRANK F. WARREN, *President*



# ADMINISTRATION



Gladys Ellms

## ADMINISTRATION AND STAFF

**MERTON D. MUNN, Ed. D.,** *University of Cincinnati.* Here is the ideal dean: He is a friend to every student, understands his problems, and is always ready to cooperate. Above all, he has a well-timed sense of humor.



**MARION R. JENKINS, M. A.,** *New York University.* We like her, we honor her—this busy Dean of Women, who is not only Dean, but also teacher of Bible and Christian Education. She is adviser for Sefelo, too, and for Christian Endeavor, Pirettes, and the Social Committee.

**GUSTAV H. SCHLAUCH,** *Ph. D., University of Washington.* The man with the pleasant personality, who, by his helpful teaching of sociology and education, commands the respect of all. To him goes most of the credit for the chapel speakers and programs we have enjoyed this year.



**ESTELLA E. BALDWIN, M. A.,** *Whitworth College.* Besides teaching Bible, Miss Baldwin is college registrar, devoting much of her time to student records, grades, and correspondence. Truly a friend to new students on Registration Day.

**JOHN L. OAKES, B. A.,** *Colgate University.* One of the most important men in the College is the genial B. M. Here's the man who collects the money, takes care of the books, and generally oversees the financial end.



**MARK KOEHLER, M. A., Th. M.,** *San Francisco Theological Seminary.* In one brief year he has contributed largely to the spirit of friendliness on the campus. Behind his sense of humor is a deep devotion to God and His Book. Professor Koehler is also Pastor of our college church.

**GLADYS LOGSDON, R. N.,** *Deaconess Hospital.* With Gladys on the campus, students find much of the pain removed from sickness.



## FACULTY

**OTTO G. BACHMONT, M. A.**, University of Iowa. The linguist of Whitworth. At home in French, German, Spanish, Latin—name which you will.



**MARY BOPPELL, B. S.**, University of Washington. Faithful instructor and helpful friend to the homemakers as well as to those who look forward to a career in her field.



**JOHN A. CARLSON, M. S.**, University of Washington. Teacher of such difficult subjects as physics and mathematics, so expert is he in his instruction that his students not seldom achieve high honors. Scores of men in the armed forces of the country bear witness to his skill as a professor.



**ANNA JANE CARREL, M. M.**, Cincinnati Conservatory of Music. Though proficient in music, it is not her only interest. Her charming versatility has been especially appreciated by members of the International Relations Club.



**JAMES W. COUNTERMINE, D. D.**, Buena Vista College. Teaching the Pentateuch is his specialty. A grand friend to young men entering the ministry.



**JANE CLAIRE DIRKS, Ph. D.**, University of Illinois. New this year, but already winning friends as a most sympathetic and inspiring teacher.



**OSCAR K. DIZMANG, M. A.**, University of Chicago. If the problem is related to the law of supply and demand, he will help you solve it. Students find him a real economics instructor.



**ERNESTINE EVANS, M. A.**, State College of Washington. A keyboard wizard. Efficiency, neatness, and helpfulness are her watchwords.



## FACULTY

MRS. H. H. FULLER, M. A., B. A. E., Chicago Art Institute. Encouraging students in practical art work has been one of the main interests of Mrs. Fuller. Gamma Kai Zeta's adviser has a real enthusiasm for art.



FRANCIS TILEY HARDWICK, Ph. D., University of Washington. Unofficial counselor to scores of Whitworth students, past and present, he gives prospective teachers instruction in education and psychology, and to Christian ministers expounds Greek and philosophy.

WINIFRED McNAIR HOPKINS, B. A., Albany College. "Hoppy" to hundreds who have known her down through the years. Unique, talented, seasoned teacher of voice and always a friend of youth.



WILMA L. KENNEDY, Ph. D., Yale University. With more students on her roll than has any other faculty member. There is no department head busier than this one whose function it is to teach English language and literature (along with journalism), and also serve as press publicity chairman for the college, and adviser for publications.

STANLEY S. NEWCOMB, Th. B., Princeton Theological Seminary. Teacher, minister, play director, and radio announcer, he is a really helpful instructor to those who aspire to be public speakers.



RHEA STRAWN, B. A., University of Montana. Capably does she keep account of the thousands of books in our library. Students working on research themes find her a very present help in time of need.

CHARLES TILLEY, M. A., University of Southern California. A newcomer to the campus, who has proved his ability as history instructor. The increased interest in this field is proof of that.



BONDE TUVESON, B. S., Whitworth College. Young and popular professor of chemistry. A disciple of B. C. Neustat.





# EXECUTIVE AND STUDENT COUNCILS



"Step right up, Tall, Dark and Sartorial. Hello, didn't I have an interview with you before?"

"I'm Merle Wood. I told you about the Philadelphians."

"Right you are. So you did. And now what have you to say concerning the Associated Students?"

"Well, the year 1943-44 has been a strange one—of difficulties and yet of advancement. The war has taken most of our men, and almost all our activities have been carried on with thoughts of our country and our service men in mind. In cooperation with the faculty and alumni, a permanent honor roll for all Whitworth service men was placed in Graves Hall. Hostesses were provided to entertain the service men on the campus in the Commons two nights a week, and play equipment purchased for that student center.

"We have a new financial set-up this year. Student body funds are handled by the executive council itself, not through the college administration. Student funds are deposited at a Spokane bank, and clubs now find that they have to do what they originally intended to do with the money allotted to them, in order to receive any funds from the A.S.W.C. treasury.

"I must mention that another way in which the war affected us this year was that the inevitable ration points forced us to find a substitute for the beefsteak breakfast traditionally preceding Campus Day activities. We had our Campus Day, however, on April 14, and ration points didn't keep us from having fun."

"Thank you, Mr. Wood. I see we have a few minutes remaining. Wouldn't you like to tell us something about the Executive Council?"

"I'll be glad to do that. The Student Council, as you know, is composed of the two highest ranking officers of each class and student organization. The executive officers beside myself are Lillian Stokes, our enthusiastic vice president and social chairman; Marjorie Klein, our irrepressible secretary, and busy Bruce Finlayson, treasurer. Dr. Schlauch is our adviser."

"When do you hold your meetings? I don't believe many of the students knew much about them."

"The Executive Council has met regularly every Monday morning, and the Student Council every two weeks. That reminds me that I ought to mention we revised our constitution this year, too. Anything else?"

"Not a thing, Mr. President. Thank you, and give our best wishes to the new head of A.S.W.C."

## EXECUTIVE COUNCIL

*Zutrau, Klein, Finlayson, Wood, Schlauch, Stokes.*

## STUDENT COUNCIL

*First row: Cromer, Specker, Ausink, Green, Zutrau, Hook. Second row: Johnson, Douglass, Briggs, Ghormley, Schlauch, Reynolds, Mise. Third row: Wacker, Wright, Van Leuven, Wood, Stokes, Finlayson, Klein.*

## WHO'S WHO



### MERLE WOOD

Here is a true Whitworth builder. As president of A. S. W. C., Merle has proved himself a capable leader, overseeing the successful accomplishment of many activities.

### HELEN GHORMLEY

All who meet May-Queen Helen remember her as one who sincerely puts *their* happiness foremost. Her helpful support of school activities gives her the right to be called an outstanding Whitworthian.

### DICK SCHWAB

He may haunt the chemistry lab, but he finds time for numerous other activities. Here is an example of both wit and wisdom.

### ELEANOR HOOK

"Hookie" will always be a Whitworth booster. She may be small, but she is also vivacious, a good student, and a true leader in student activities.

### MURIEL AUSINK

Muriel is always an inspiration to victorious Christian living; for in her, *Whitworthians see a staunch and loyal Christian soldier. She has served us faithfully in our social activities as well.*

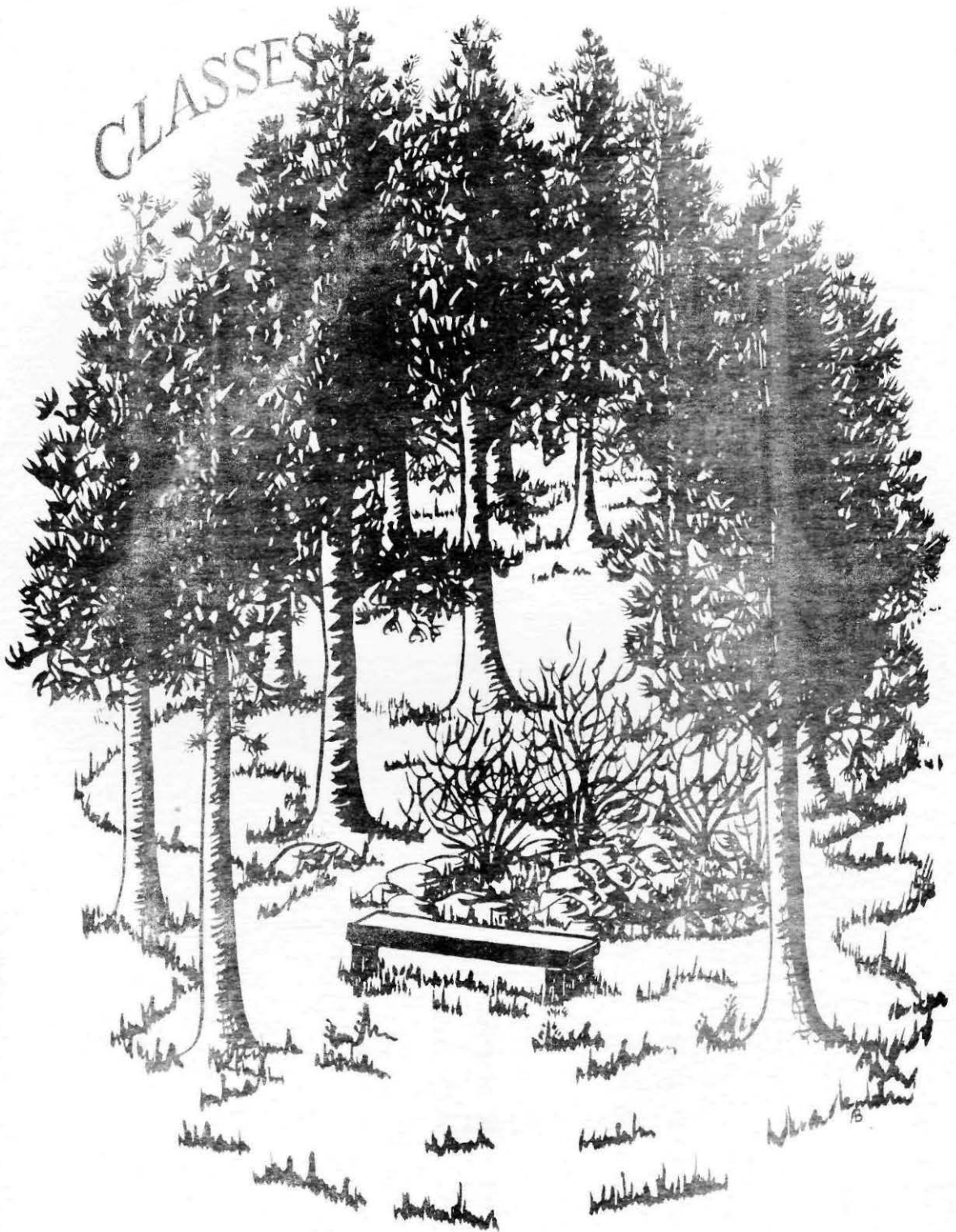
### MARJORIE KLEIN

Always bubbling with vim, vigor, and vitality—that's Marge. Whitworthians think of her contributions to music and women's athletics here. She is the kind who can add a cheery note to any conversation.





CLASSES



## SENIORS



Going forth to serve, the class of 1944 faces the future. Most of the twenty members are dedicating their lives to God and country.

Of the 73 original freshmen, who entered in 1940, but four are left to graduate, and one of these does so *in absentia*. Helen Ghormley, Eleanor Hook, Ruth Huntley, and David M. Thorndike (in the navy) are the four.

The senior class this year elected capable Eleanor Hook as president, Helen Ghormley as vice president, Johanna D. Briggs as secretary-treasurer, and Ruth Huntley as social chairman. Dr. and Mrs. G. H. Schlauch were chosen as advisers, and in their home the winter quarter party was held. This spring the seniors engineered the annual sneak.

Members of the class of '44 elected to *Who's Who Among College and University Students* are Helen Ghormley, Virginia Hodge, Eleanor Hook (a member in her junior year also), Florence Ann Reynolds, and Merle Wood.

The twenty graduates and the departments in which they have majored are as follows: Dorothy Beggs, Biology; Johanna D. Briggs, Home Economics; Marguerite C. Cook, Education; Reuel Cook, History; Gerald Dean (graduating *in absentia*), Pre-Medics; Naomi Dietz, Biology; Helen Ghormley, Christian Education; Virginia Hodge, Social Science; Eleanor Hook, English Language and Literature; Ruth Huntley, Basic Science; Louis Messex (graduating *in absentia*), Social Science; Kenneth L. Monette, Social Science; Lenore T. Peterson, English, Language and Literature; Robert Reese, Bible; Louis McConnell, Sociology; Florence Ann Reynolds, Home Economics; Tetsuo Saito, Social Science; Frances N. Scott, Sociology; David M. Thorndike (graduating *in absentia*), Mathematics; Merle Wood, Christian Education.

ELEANOR HOOK—"I shall be teaching English in high school following my graduation."

President "Hookie" certainly deserved her selection by the alumni for the Ideals Award. Member of *Who's Who Among Students*, the Pirettes, Whitworth Players.—A.S.W.C. secretary, secretary of the sophomore class and the Volunteer Fellowship, she found time in her junior year to edit the *Natsihi*. Whew!



HELEN GHORMLEY—"I plan to continue my schooling by preparing for foreign missionary service, possibly in Africa."

Vice president of the senior class and this year's May Queen, Helen has been A.S.W.C. secretary, president of the Pirettes, and of the Life Service Club, secretary for Women's Conference, and a member of the chorus for three years. She was runner-up for the Alumni Ideals Award.

JOHANNA D. BRIGGS—"I plan to take a fifth year at Whitworth, and then teach."

The versatile president of this year's campus Christian Endeavor, Johanna has taken part in many campus activities. Her class elected her as secretary-treasurer, and she has been a member of the Volunteer Fellowship, Life Service Club, and Alpha Beta.



RUTH HUNTLEY—"Following graduation I plan to go to Moody Bible Institute."

Serving as social chairman of the senior class has kept Ruth pretty busy this year. She has served as editor of the *Whitworthian*, member of the *Natsihi* staff, Alpha Psi Omega, Medici Futuri, Chorus and Life Service Club.



DOROTHY BEGGS—"I am going into the Tacoma General Hospital as a medical technician."

She has been a capable lab assistant in zoology and physiology, also chairman for the 1942 decoration committee for the Homecoming banquet, and an active member of Alpha Beta, W.A.A., and Christian Endeavor.

REUEL COOK—"I am going to South America as a missionary and will engage in translation and evangelistic work with the Indians."

This tall Whitworthian has come back to this campus to graduate. In 1938 he was on the baseball and tennis teams, as well as on the Natsihi staff.



PFC. GERALD S. DEAN—"I will continue to work until my M. D. requirements are filled, and then will serve with the army medical corps. After the war I hope to be able to serve my fellow men and honor God as a successful physician."

Gerry, one of our non-resident students this year, is studying under the supervision of Uncle Sam. During his student days at Whitworth he was president of Medici Futuri and a charter member of Alpha Psi Omega.



NAOMI DIETZ—"I plan to teach."

A new-comer to the campus and a good worker is Naomi, who has seen activity in Gamma Kai Zeta, the Life Service Club and Christian Endeavor..



VIRGINIA HODGE—"I am teaching now and plan to study further at a seminary."

Among her activities at Whitworth have been those of chairman of the Women's Conference, secretary of the Volunteer Fellowship and the Pirettes. She has also been a member of the chorus. Is a member of *Who's Who Among Students*.



LOUIS McCONNELL—"I intend to serve as a minister of the Methodist church."

One of the two seniors serving pastorates this year, Louis has been a member of the tennis team, chorus and the Philadelphians.

KENNETH MONETTE—"I am planning to preach in the Free Methodist church."

Activity as president of the International Relations Club for two years, as vice president of the Philadelphians for two years, a member of the chorus and of Phi Alpha, has kept Kenney busy in his three years at Whitworth.



ROBERT REESE—"I plan to go to theological seminary and then enter the ministry."

Because of the press of church and other activities, it has taken Bob ten years to finish college, but way back in '34 and '35 he was president of the Whitworth Christian Endeavor. He was also a member of the Philadelphians and



FLORENCE ANN REYNOLDS—*"After studying at the Biblical Seminary of New York, I plan to serve as an educational missionary in China."*

Florence Ann, as you can see, has been an extremely active girl at Whitworth. During her three years here she has been Alpha Beta president, Gamma Kai Zeta president and secretary, and *Natsihi* sports editor. She is a member of *Who's Who Among Students*.

TETSUO SAITO—*"I hope to see full-time service in the Gospel ministry after I have attended seminary."*

As secretary-treasurer of both the International Relations Club and of the Philadelphians, as well as the vice president of the campus Christian Endeavor during his student days, "Tets" has been indeed busy.



FRANCES N. SCOTT—*"I would like eventually to go into the field of social work."*

Another of the several transfers taking work at Whitworth this year, Frances has been a member of the chorus and of the Women's Glee club.



MERLE WOOD—*"I am expecting to serve as a student pastor while attending Grace Theological Seminary in Indiana. I am looking forward to missionary service in Africa afterwards."*

Acting as president of the A.S.W.C., president of the Philadelphians, and as program chairman of the Volunteer Fellowship, has kept Merle up there in the Whitworth limelight. He has also found time to be on the track and debate squads.







Bruce Finlayson



Marjorie Klein



Isabel Mize



G Van Leuven



Muriel Ausink



Albert Brown



Mary Burkland



Opal Coats



Edna Deckert



Betty Ann Douglas



Marie Franz



John Henricksen



Marjorie Johnson



Betty Marcellus



Isabelle McNeely



Helen Morrow



Tomiye Nishimoto



Robert Sanders



Lillian Stokes



Joyce Warren

## JUNIOR CLASS



"Hello there, you do look like a president. Are you Finlayson, from the Junior class?"

"Yes, Sir, but the kids call me Finnie."

"Didn't you bring anyone with you? Any officers or classmates or anything?"

"No, they were all busy. Our class isn't very large. We started out with a hundred and now we have only twenty-five. We do just as much as we ever did though; so it keeps us busy. We sure have a swell bunch of officers, too, including me. Isabel Mise is vice president, Edna Deckert, secretary, and Lillian Stokes, treasurer. I suppose you already know that George Van Leuven is the editor of the *Natsihi*."

"I have heard about all the students at Whitworth looking forward to Junior parties or remembering the fun they had taking part in other Junior activities. Would you name some of them for us?"

"Well, we put out this Annual as it is customary for the Juniors to do; we held a Junior-Sophomore party in the spring. We sponsored a ping-pong tournament in January and a chapel service with a special speaker. Then of course we watched every motion the Seniors made, lest they should carry out their sneak unmolested."

"You really have been active. We have about a minute left. Is there anything you would like to say before we sign off?"

"Yes, I would like to thank Professor and Mrs. Mark Koehler for the wonderful job they have done as our advisers. They were responsible for most of our fun. I'll see you next year when I'm a Senior."



Della Specker Virginia Huffman Marjorie Schauble Jean Zutrau Jean Aldrich Ruth Barnes



Helen Bovee Esther Brown Betty Budd Dorten Coats Jackie Davis Evelyn Deering



Geraldine Falk Alvin Franz Yvonne Green Frances Wathaway Jeanne Henderson Lauretta Holder



Hediko Horikawa Virginia Hunt Betty Jacobs Helen Jo Jamieson Sadao Kuroiwa Anita Lewis



Edna May Dorothy Hunce Sumiko Nakano Jean Nance Melissa Richards Arthur Sanford



Jeannette Strong Ruth Stueckle John Webster Richard Yamamoto

## SOPHOMORES



Hello, who's this bright-eyed little red head?

"Don't tell me you are a class president?"

"I am too."

"And who are all these other girls?"

"Oh, these are the rest of the officers and some of the other Sophomores."

"What, aren't there any men at all?"

"Well, there are *three!* But none of them hold office. Of course, we miss the men who aren't here, but we are doing a pretty good job of carrying on anyway. Just ask anyone around here."

"What do you mean?"

"I mean we are the girls that do things. Whitworth couldn't get along without us. Four of us are even Pirettes this year. As a class we entertained the Freshmen at a mixer in November; later we held an all-soph-get-together; and we sponsored a chapel program in the spring. I am by no means the only leader of the class either. Here is Virginia Huffman, vice president; and Marjorie Schauble, secretary; Jean Zutrau, treasurer; and social chairman, Yvonne Green. Dr. and Mrs. Hardwick are our advisers. I am sorry they are not here now to say something themselves."

"So am I. But now we must get on to the Juniors. Thank you, Della."



David Wright



Elnore Wacker



Roy Dimond



Lee Andrews



Barbara Bauer



Ella Dora Black



Anita Brooks



Dorothy Compher



Marilouise Cappelen



Charlotte Clark



June Condit



Crystal Croft



Peggy Cromer



Warren Deasy



Patricia DeBall



Marilouise Dowdy



Edna Dowkie



Bonnie Easterly



Elizabeth Evans



Gladys Ellms



Dorothy Farthing



Lorraine Frick



Bernice Fiddler



Dorothy Garwood



Tom Haji



Leal Hall



L. Hammersburg



Ralph Haibakk



Ruth Harrison



Ellen Masagawa



Pat Hawley



Michi Hirata



Bernice Hoff



Betty Hoffman



Dean Harrison



Phyllis Hubel



Charlene Huffman



Yuriko Ishibashi



Mary Ito

## FRESHMAN CLASS



"Hello Tall, Dark and Tonsorial. Would you like to tell us how it feels to be the leader of the largest class at Whitworth?"

I feel that it is a very great honor, but before I say anything I would like to introduce our advisers, Miss Boppel and Mr. Newcomb, and two of our other officers, Vice President Elnore Walker and Secretary Roy Dimond. I should like to have been able to present also our treasurer, Jim Kopp, and our social chairman, Dorothy Millard, but they left at the beginning of the second quarter.

"Thank you. We are very, very glad that you could be here. We have heard that you have really done an excellent job. And, by the way, Dave, you Freshmen are looking quite different from the mob of green optimistic kids just out of high school that descended upon us last September. You must have had quite a bit of experience since then. Can you tell us some of the things you've done?"

"Sure, don't you remember the Kampus Kapers?"

"That was the variety show you put on last fall, wasn't it? It was one of the most entertaining shows of the year. I never will forget Larry White as master of ceremonies in Truth or Consequences, or the thrill I got from the blood-curdling splendor of Mr. Newcomb's reading."

"We also put on a chapel program in the spring."

"Yes, and what about your initiation?"

"That was tough; but you just wait till next year!"

"We will. You'll all be Sophomores then. And till then—good luck to you!"





Francelle Julian



Bert Kimura



Betty Ann Klee



Helen Knautz



Marian Kreitlow



Shirley Ann Lalor



Virginia Diehl



Alvida Lehn



Mae Lancaster



Pat Lipscomb



Lucile Ludberg



Ruth McHenry



Warfield Muncie



Happy Nakagawa



Dayne Nix



Kathryn Nothwang



Donna Peelgren



Marguerite Perry



Emily Polson



Irene Pruter



Barbara Reeves



Donna Jean Ruby



Tokiko Senda



Virginia Shepherd



George Shiraga



Patricia Spelman



Tomo Terao



Ellen Ann Thar



Evelyn Wallace



Jo Weyrick



Lawrence White



Marian Williams



Tom Summerson



George Yamamoto



Roberta Zacher



Verna Zenier



Vesta Zenier



Frances Zike

## ALUMNI ASSOCIATION



"Now we are going to turn the microphone over to you, Mark Koehler, and have you tell us about the Alumni Association."

"We are sure proud of our organization this year. Many of our members are officers in the army and the navy and many more are in the service. We have really accomplished a lot, too. Already we've contributed more than \$500 toward our annual school project. We're going to buy some equipment for the Jay P. Graves Hall."

"But Professor Koehler, don't be so sober. What did you do in the line of fun?"

"Well, we entered a splendid team in the homecoming basketball tournament. It was the only undefeated team there. The only trouble was that the team with the highest total points won!

"Then, too, we had a Thanksgiving party at the Hardwicks on the Saturday following Thanksgiving. The Alumni had a picnic after the May Day festivities and we held a banquet for the graduating seniors. Oh, I musn't forget that on March 31 at the Awards Banquet the alumni cup was presented to Eleanor Hook as the senior who had done the most for the school.

"We put out one issue of our paper, the *Whitworth Alumnus*; after that we decided to combine with the *Whitworthian* for the duration.

"You know, of course, that I am president, but there are plenty of other officers also. Alice Postel is vice president, Dorothy Reed, secretary; Margaret Uhden, treasurer; Eleanor Chase, publicity; members at large, Helen Carlson and Harriet Easton."

"Thank you very much, Professor Koehler. We are all proud of our Alumni."

# ORGANIZATIONS



## WHITWORTH ORGANIZATIONS



As in every college, one of the most important features of Whitworth is its organizations. They are connected with almost every phase of college life, representing diversified interests, and combining work and play so well that membership in them is both pleasurable and profitable. Here, too, the Spirit of Christ prevails, for the whole college program is Christ-centered.

The magnetism of the activities has attracted many students, and it is through their combined efforts that the year has been a success. The time of every member has been well occupied, for although the numbers are reduced, the performance of each organization has been creditable. This proves the ability of the students as well as their school spirit.

The clubs are high-spirited and service-minded. This year a new organization, Alpha Kappa Chi, made its appearance to meet the needs of the town students, who are unable to participate in many campus activities. It has been the incentive for meetings and get-togethers in town in the name of Whitworth.

We have here in our studio, representatives, members and officers of every organization on the campus. You will hear some of them interviewed so that you may learn more about each club in particular.



TOWN CLUB—*First row:* Cline, Nakano, Nakagawa, McNeeley, Hathaway, Hunt, Sheridan. *Second row:* White, Ludberg, Hirata, Dowke, Wallace, Lalor, Huffman, Jacobs, Holder. *Third row:* Romanoff, Condit, Ellms, Ishibashi, McHenry, Mise, Perry, Cromer, Cappelen, Hook, Yamamoto, Webster. *Fourth row:* Deasy, Lipscomb, Hoibakk, Hoffman, Stokes, Easterly, Summerson, Terao, Peelgren, Andrews, Yamamoto.

# ALPHA KAPPA CHI



We now have on our program Lawrence White, president of the newest club on our campus, Alpha Kappa Chi.

"Hello, Mr. White."

"Hello, but please call me Larry."

"All right, Larry. Will you please tell us just what Alpha Kappa Chi is all about. It hasn't been on the campus very long and I am not sure every one knows."

"Well, if they don't know by now, they ought to. We organized this club in January and since then it has really been going places. You see, we students who live in town often can't join all the organizations out here that we would like to because it is so difficult for us to get to the meetings; so we got together and formed a club of our own that could meet in town once in a while. In that way we don't feel as if we were getting left out of school activities."

"Want to tell us what you've been doing?"

"Oh, we've really been very busy. Each month we hold a business meeting and some kind of social function in town, and besides that we held a banquet and arranged a picnic for both town and campus students. We aren't limiting our activities to having fun either. We are planning to sponsor a creative writing group for all the students at Whitworth who are interested in writing. I think we might uncover some real talent."

"You have other officers, of course."

"Yes, indeed. Dr. Kennedy and Professor Tilley are our advisers, and Marguerite Perry is our vice president. Laretta Holder is secretary, Frances Hathaway, treasurer; Tom Summerson, sergeant-at-arms; Tomi Terao, fifth executive; Virginia Hunt, historian, and Isabel Mise, music chairman."

"You certainly have a lot of officers."

"Yes, we do, and they are good ones, too."





## SEFELO



"Miss Jenkins, why don't you tell us about Sefelo? You must see and hear everything that goes on in the dorms. What does this organization stand for?"

"The name, Sefelo, is composed of the first two letters of each of the words 'service,' 'fellowship' and 'loyalty.' Sefelo is back of all three of them."

"That is a wonderful motto. How does the group compare now with those of past years?"

"This is by far the largest group we have ever had, and their activities have been correspondingly good. There were 'Stooge Week,' the Christmas party, Heart Sister week, the Mother's tea and open dorm. We alternated with Alpha Chi—as usual—in sponsoring the birthday dinners each quarter."

"Tell me, what do you think was the most outstanding activity of the year?"

"Well, I would like to tell you about our Christmas party. It was beautiful! Each Christmas the Sefelo president lights a red candle which is symbolic of the spirit of Sefelo. This same candle has burned for 11 successive Christmas parties now. In fact, it was lighted at the very first party this organization held. This year after our fall president, Helen Jo Jamieson, had given us a Christmas message, every girl lit a small white candle from the flame of the red one. Then we all went back to our rooms singing 'Silent Night' together. It is this message (brought to us anew each Christmas) that is the very basis of our motto."

"Thank you so much, Miss Jenkins. We know that girls all over the world have found true and lasting friendship through Sefelo."

### SEFELO

*First row: Senda, Compber, Ito, Munce, Burkland, Zutrau, Hammersburg, Ruby, Williams, Weyrick, Davis, Ghormley. Second row: Douglass, Briggs, Tharp, Budd, Deckert, Boggs, Morrow, Kreitlow, Evans, Nance, Zenier, Harrison, Bauer, Huffman. Third row: Nothwang, Fiddler, Frick, Hoff, Ausink, Reeves, Lewis, Lehn, Carrel, Beggs, Wacker, Johnson, Specker, Barnes, May, Zenier, Klein. Fourth row: Green, Brown, Hasagawa, Jenkins, Logsdon, Dietz, Falk, Hubel, Huntley, Zacher, Pruter, Bovee, Dowdy, Reynolds, Shepherd, Stueckle, Schauble, Aldrich, Farthing.*

## ALPHA CHI



"Oh! Oh! Who are these fellows who are just entering the studio? Let's step down and see what's going on. Here is a young man who looks as if he would like to talk to us.

"Hello, who are you?"

"I'm Dean Harrison, president of Alpha Chi."

"Alpha Chi? That's the boys' dormitory organization, isn't it?"

"Yes, and it's the most exclusive club on the campus."

"How's that?"

"Well, the membership is limited to resident men students and you know how rare men are. Altogether we have only 11 members. We are just as important as ever though. Whitworth couldn't get along without us."

"No, indeed! You say you are president? Who are the other officers?"

"Alvin Franz is vice president, Tetsuo Saito is secretary-treasurer, and, of course, Mr. Newcomb, here, is our adviser."

"Thank you very much. Now that we know how really important a part of the college you are, we'll go on."

### ALPHA CHI

*First row: Munce, Wright, Finlayson, Hall, Kimura. Second row: Saito, Nix, Schwab, Wood, Franz, Harrison, Mr. Newcomb.*



## GAMMA CHI ZETA



"You are president of Gamma Chi Zeta, aren't you, Corpie?"

"Sure thing! It's a good art club, believe me!"

"Say, are you the ones that made so many of those grand posters for Spiritual Emphasis Week and for the school plays?"

"Yes, but that's not all. We've block printed curtains for the art room and table covers for the reception room. Two of our members, Gladys Ellms and Tomi Terao, made blocks for the *Whitworthian*."

"That sounds good. And who are your officers?"

"Well, Mrs. Fuller is our faculty adviser and Florence Ann Reynolds our student adviser. Tomi Terao is vice president and Virginia Diehl is secretary-treasurer. But all the members have done their share."

"They really must have. Thanks a lot, Corpie."

### ART CLUB

*Cromer, Cappelen, Perry, Ellms, Reynolds, Williams, McNeeley, Mrs. Fuller; Kneeling, Terao.*

## ALPHA BETA



"So, Alpha Beta, Miss Reynolds, means 'best things in life.' You say these Home Ec girls have the reputation for being the most active group on the campus?"

"That's what I said. First of all, in co-operation with W. A. A., we gave a tea for the new girls at the beginning of the year. Just ask any of the Whitworthians how they looked forward each quarter to our skating party at Cooks! Then there was the traditional Mothers' Tea in the spring. We had other activities, too—the formal installation of officers and the formal dinner at a downtown hotel. In our scrapbook we keep souvenirs and favors from each event."

"Whew! I'll say you're active!"

"I had lots of help from Marjorie Johnson, our vice president; Della Specker, secretary; Jackie Davis, treasurer, and Jean Henderson, sergeant-at-arms."

"Thank you, Florence Ann. Best wishes to you and your adviser, Miss Boppell."

### ALPHA BETA

*First row: Nance, Hammersburg, Ruby, Davis, Johnson, Reynolds, Specker, Miss Boppell, Stueckle, Nishimoto. Second row: Marcellus, Green, Bauer, Farthing, Falk, Brown, Jacobs, Holder, McNeeley, Schauble, Weyrick, Beggs. Third row: Evans, Harrison, Lalor, Nothwang, Lehn, Bovee, Briggs, Ishibashi, Burkland, Hook.*

## INTERNATIONAL RELATIONS CLUB



If you come with me two Tuesday afternoons a month, we'll listen to the International Relations Club's forums. One time they're discussing Japan and the Far East, the next meeting it's Canada, and again, it's England. Wait, here's the president, Kenneth Monette.

"Ken, what activities besides your bi-weekly meetings do you take part in?"

"Well, our outstanding activity was our participation in the convention held at Holy Names College in March."

"And who are your officers?"

"Isabelle McNeely's our vice president, Edna Deckert is secretary, and Tetsuo Saito is the treasurer. Mrs. Carrel is our adviser."

"Thanks, Ken. We appreciate the work your club is doing."

### INTERNATIONAL RELATIONS CLUB

*First row: Van Leuven, Carrel, Stokes, White. Second row: McNeeley, Tilley, Deckert, Evans, May, Schlauch, Hook.*





## PHI ALPHA



Here we have Eleanor Hook, president of Phi Alpha.

"Tell me, Eleanor, how does one become a member of Phi Alpha?"

"Oh, any Whitworth student who consistently maintain a grade above 2.3 automatically becomes a member. Seniors who have had one year's work at Whitworth become active members, whereas juniors with a consistent 2.3 average become associate members."

"Did any become members this year?"

"Yes, indeed. Kenneth Monette and Virginia Hodge became active members and Betty Ann Douglass, Isabelle Mise, George Van Leuven and Dick Schwab became associate members. They were presented at a special chapel program. We are proud of them and of our faculty members, Dean Jenkins and Dr. Gustafson, who came into the club when they were Whitworth students. This year's faculty representatives, appointed by President Warren, are Miss Boppell (our secretary), Mrs. Carrel and Mr. Bachimont."

"Have you had any social activities?"

"We held a dinner party this spring for the members and faculty representatives."

"Thank you, Eleanor. We are proud of your group."

## PIRETTES



Who are these girls running around in black skirts and grey sweaters? They have been doing it every Thursday all year. Let's call some of them up here and find out what it is all about. Here's a package of PEP now!

"Who are you?"

"I'm Marjorie Klein and I'm a Pirette."

"What do the Pirettes do?"

"Oh, we do almost everything. Scarcely anything goes on around Whitworth that we don't have a part in. Each one of us is almost a club in herself. She has to be, to be a Pirette. And she can't neglect her studies either. A high scholastic standing is one of the requirements for membership."

"Doesn't the organization have any specific activities?"

"Indeed it does. We held a tea for the new girls at the beginning of the second quarter; a formal fireside reception of new members and installation of officers, and a chapel program to introduce the members. Besides this we take charge of a war stamp sale every Thursday."

"That is wonderful. You are not the president, are you?"

"No, we Pirettes don't have a president. We have a captain. She is Eleanor Hook this year. Betty Ann Douglass is first mate, Virginia Huffman is second mate, and Helen Ghormley is purser. Of course we can't leave out our adviser, Miss Jenkins, either."

"Who are the other members? As high as the qualifications are, there can't be too many."

"There are 11 of us. The others are Helen Hartley, Virginia Hodge, Helen Jo Jamieson, Isabel Mise, Lillian Stokes, Joyce Warren and Jean Zutrau."

"Thank you, Margie. I think Whitworth has a right to be proud of you girls."





HOMECOMING



SOCIAL COMMITTEE

At the  
Golden Parrot  
Cafe

Gay Nineties



## SOCIAL COMMITTEE



Is that Lillian Stokes over there?

"Say, Lillian, what do Whitworth students do during the year besides study?"

"You've come to the right person for the answer to that question. I've seen so much crepe paper, so many thumb tacks, game books and costume plans that my head is doing cart wheels!"

"Oh, that's right. You're the social chairman, aren't you?"

"Yes, and I really believe the social committee has given the students some relaxing hours. Have you ever suddenly been aware of a spook hovering around you? Or did you ever hike over miles of icy roads and rough paths, only to discover that the treasure for which you were searching was gone? Well, if you haven't you've missed a lot of fun our students had this year."

"That sounds like lots of work for you. Did you ever get any studying done?"

"Oh, I had an excellent committee to help me. Ruth Huntley, Muriel Ausink, Yvonne Green and Elnore Wacker did lots of the planning and working. Many of the brainstormers were theirs. We began the year right with a spook party. The campus was really haunted that night.

"One of the largest tasks was planning for Homecoming. That was a busy week-end. You should have seen Queen Ellen Ann Tharp as she arrived at her coronation in a pumpkin coach! But the main event of the week-end was the annual Homecoming banquet in the Isabella Room of the Davenport hotel on Saturday evening. There were more than 250 students and alumni there. The theme was "Castles in the Air," and from all the decorations we almost thought we were living in one."

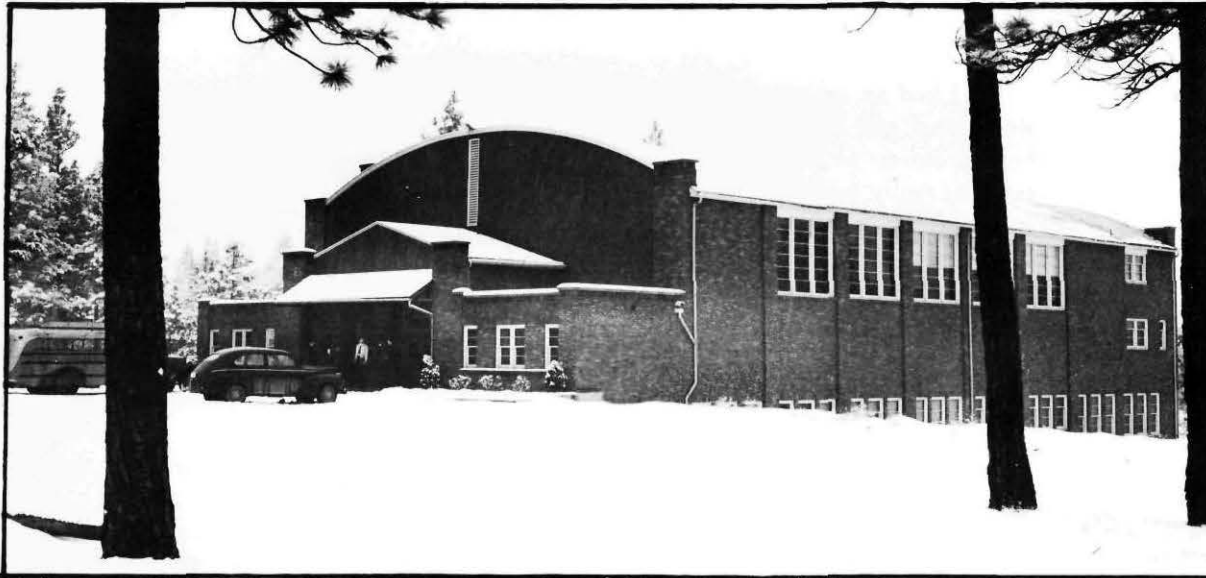
"We know that Homecoming was the event of the fall. What was your big affair during the winter?"

"Oh, all this was a build-up for the Gay Nineties Party. I think the students will always laugh when they think of the people who were there that night. Where all the derbies, long-tailed coats and gowns with wasp-waists and bustles came from I don't know, but they were there. Warren Deasy did a superb job in the production of that heart-rending melodrama, "Curse You, Clem Inkwel." And oh, the supper at the Golden Parrot Cafe afterwards. Not only was the food good, but the service was excellent! How could it be anything else when you have a quartette of singing waiters like Dr. Munn, Dick Schwab, Dave Wright and Al Franz? But you really hadn't seen or heard anything until Dr. Warren sang. That was the hit of the evening."

"Well, I'm beginning to think that Whitworth students do have some good times."

"Don't think that this was all they did. There was the play night in the winter quarter, the snow frolic and treasure hunt, the Christmas party and the Spring Awards banquet. There has been plenty of activity around."

"I really believe it now. Thanks a lot, Lillian. You've done a grand job!"



## JAY P. GRAVES HALL



We are standing now before the Jay P. Graves hall, the newest and one of the finest buildings on the campus. We can see it is a big building, too, not very high but long and wide, firmly constructed of those same red bricks that make Whitworth buildings look so well among the pines, and surmounted with a curving green roof.

Let's go inside and look around. The big front doors swing open and we are entering the vestibule. Beyond lies the gymnasium, on the west side are the stairs that lead down to the ground floor, where the Commons is located. Let's see the gym first. Oh, it is a fine place!—with its waxed and polished floor. Along both sides stand the long rows of bleachers. There is a huge stage with maroon velvet curtains at the opposite end. It is a long way down there from where we stand. This place is certainly big.

But there is much more to see. Let's go down to the Commons. Out into the vestibule we go again and down the stairs. We are on the lower level now. Here is the door to the publications room that for a while was an office of the War Training Service. All these other little doors open on music practice rooms. Again we turn lengthwise of the building. Where the hall widens we find the ping-pong tables. On the east side is the door that takes us into the Commons.

What a gay yet restful place it is! On the end closest to us is the lunch counter, run by Mr. and Mrs. Coates. At the piano a couple of students are filling the air with music. In the corner is the big fireplace with a comfortable davenport before it. Scattered about the room are many little tables and chairs in a simple modernistic design and gay colors, where other students sit playing games, studying, or sipping malts and cokes.

Altogether there are 23 rooms on this floor. Down the hall from the Commons we find dressing rooms, shower rooms, locker rooms and storage rooms for sports equipment.

How lucky Whitworth is to have a hall like this one!





## WHITWORTH PLAYS



"Hello, Mr. Newcomb. Speaking from the standpoint of a dramatics coach, what do you think of Whitworth plays this year?"

"Well, when 'Letters to Lucerne' was over, many people said that it was the best play ever given at Whitworth. Then when 'Nine Girls' was finished, they said it again. Judge for yourself."

"I remember. 'Letters to Lucerne' did leave us thinking, and the cast did an excellent job. Mary Carol Moss took the lead well, and Marjorie Schauble, Jeanette Strong, and Marjorie Johnson went right along with her."

"Yes, and in 'Nine Girls,' there was a wonderful atmosphere of suspense created. Of course Pat Hawley went over big in the leading role, but right beside her were Marjorie Johnson and Evelyn Wallace. No one could have been more true to life than Ruth Huntley as 'Shotput,' and Barbara Reeves made a *good*, sophisticated 'glamor-puss.' (Not that we mean to leave out Joyce Warren, Patricia Spelman, Mary Burkland (Tennessee), or Ruth Barnes either).

"But this is only a small part of what the dramatics department has done. What about all the rest?"

"Well, there was 'Hamlet,' on May 12 in the North Central High School auditorium for the benefit of the American Red Cross war fund."

"Yes, and you were Hamlet, weren't you?"

"I was. Dean and Mrs. Munn also took parts. Of course, it was still a student play. Ruth Barnes, Warren Deasy, Ralph Hoibakk and Larry White worked hard at it. The lines were cut so that the whole would be no longer than a modern play."

"Was there anything else done in the field of dramatics this year?"

"Oh, yes. Our commencement play was a comedy, 'Ring Around Elizabeth.' Then the Gay Nineties Party play, 'Curse You, Clem Inkwel,' was a dramatics project. A repeat performance of that was given to the soldiers at Fort Wright Hospital. We cooperated in producing the community club play which was given on our stage, and a number of students have also given readings or had speaking engagements in town. We have been busy, I assure you."

"You certainly have been. Thanks a lot for telling us all about your activities."

### LETTERS TO LUCERNE

*First row: Wright, Hoffman, Spelman. Second row: Schauble, Johnson, Strong, Clark.*

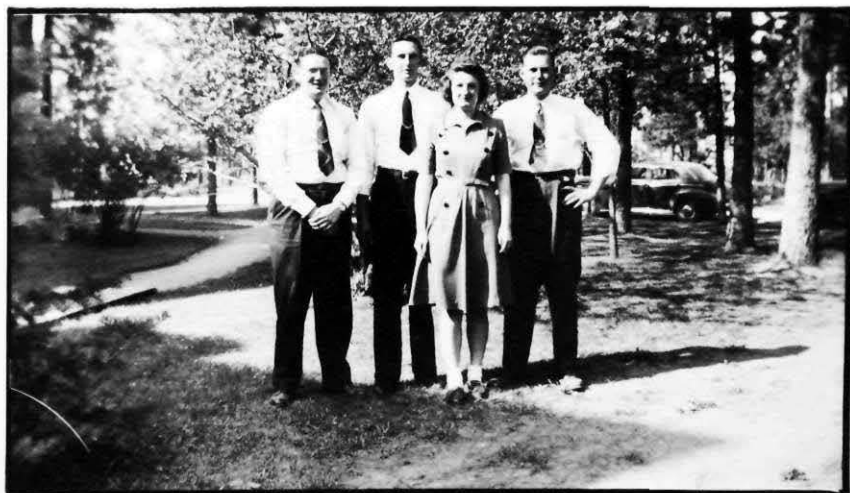
### NINE GIRLS

*Warren, Johnson, Huntley, Hawley, Burkland, Wallace, Deering, Reeves, Barnes, Spelman.*

### HAMLET

*Deasy, White, Barnes, Mr. Newcomb, Dr. Munn. Seated: Mrs. Munn, Haibakk.*





## WHITWORTH PLAYERS



Here comes Jean Zutrau.

"Hello, 'Zoot,' do you know anything about Whitworth Players?"

"I ought to. I'm president of the organization."

"And I hear you've been very active this year!"

"Have we! We have put on so many plays that I couldn't even count them. We have bought a lot of new stage equipment too—rugs, flood lights, spotlights, and portable stage props, for example."

"Do you have to be an actor or an actress to be in this organization?"

"Oh, no indeed. We couldn't have any plays at all if it weren't for the people who work behind the scenes—those who prompt, manage properties and sound effects, and take care of the lighting. Of course they belong to Whitworth Players."

"I want also to mention that four of our members belong to Alpha Psi Omega, the only national fraternity on the campus. They are Helen Ghormley, Virginia Hunt, Marjorie Johnson, and Bruce Finlayson."

"That is quite an honor. Thank you, Zoot."

### WHITWORTH PLAYERS

*First row: Warren, Barnes, Schauble, Hunt, Reeves, Zutrau, Burkland, Clark, Spelman, McNeeley. Second row: Aldrich, Wallace, Johnson, Deasy, White, Wright, Haibakk, Huntley, Hoffman, Mr. Newcomb.*

## DEBATE TEAM



Here is Virginia Shepherd. We'd better watch out. She might give us a debate.

"I couldn't, unless Bruce Finlayson, Larry White, and Merle Wood were here. You have to have a team for a debate, you know."

"When you do get together you are certainly not bad."

"I'll say we're not! Did you hear about us? We debated in chapel and then in the Central Valley high school. After that we went to Linfield college to participate in a debate tournament there."

"Did you win a place?"

"Not debating, but in the extemporaneous, impromptu, and speech of occasion contests which the boys entered, Larry White won third place for his speech of occasion."

"What was your debate topic at Linfield College?"

"Resolved: That upon defeat of the Axis the United States should cooperate in establishing and maintaining an international police force."

"We're glad to have this information, Virginia, and we congratulate you for your work."

### DEBATE TEAM

*Left to right: Finlayson, Wood, Sheperd, White.*



*George Van Leuven*



*Virginia Huffman*



*John Hendrickson*



*Ruth Huntley*



## WHITWORTHIAN



Who is this hurrying down the corridors, pencil and notebook in hand? Whoever he is he looks as if he knows where he is going. In a minute we will find out. Why, it's John Henricksen, editor of the *Whitworthian*.

"John, we know you are in a hurry, but can't you stop a minute and give us some information concerning your paper?"

"Oh, sure. I'm busy, but not too busy to talk to a friend. What is it you want to know?"

"The college has seen some fine issues of the school paper during the past few months. Could you tell us how you and your staff manage to put it out so often? It must be a real job to get all the copy in good shape and at the same time meet a deadline."

"Oh, it isn't very much. I just sit down and twiddle my thumbs, and let the staff do the work. I'd like to mention every member of the staff. They've worked, really worked putting out that sheet. But I have to go now. I've a last minute story to get. Wish I could talk to you longer."

"Thanks for the interview, John, and congratulations for publishing such a grand paper."

### WHITWORTHIAN STAFF

First row: Ellms, Briggs, Hoffman, Spelman, Hall, Hathaway, Hunt, Nothwang, Ausink.  
Second row: Henricksen, Ludberg, Shepherd, Perry, Easterly, Senda, Ito, Kreitlow, Black, Julian, Compher, White, Haji.

## NATSIHI



Listen to the thud of those heavy heels approaching the studio. There is only one person on the campus with a walk like that, and here he is, George Van Leuven, editor of the *Natsihi*. George has been busy these past quarters, with his associate editor, Virginia Huffman, putting this annual into shape.

"You have certainly done well, George."

"We've put in a lot of work, and have done our best to make this an outstanding *Natsihi*. However, I think that the large share of the credit goes to the staff members and others who have contributed to the construction of the book.

"I'm glad you mentioned Virginia Huffman. Virginia was my right hand, especially when it came to taking care of the pictures. I would also like to call to your attention the departmental editors. The spirit of co-operation shown by them has been splendid.

"My sincere thanks go to Dr. Kennedy, our adviser. Her ideas as well as her helpful attitude have played an important part in the planning of this *Natsihi*. I'm thankful, too, for the assistance given us by Mrs. Fuller, and the art students, and also Dr. Schlauch, our business manager.

"Finally I would like to express my appreciation to Mr. Leo Oestreicher, who personally took care of the photography and printing of the book."

"Thank you, George. Our congratulations to you and the persons you have cited, for the publication of this 1944 *Natsihi*."

### NATSIHI STAFF

First row: Douglass, Stokes, Klein, Van Leuven, Huffman, Julian, Stueckle. Second row: Johnson, Warren, Wright, Henricksen.





## ECHOES FROM THE PINES



Professor Newcomb has just signed off for "Echoes From the Pines." Let's step into Graves Studio now and talk with him a moment.

"Mr. Newcomb, would you give us some information concerning this program?"

"Yes, I'd be glad to. It is a new series of secular programs presented each afternoon, Monday through Thursday, and released over Radio Station KGA. This station has been very co-operative in giving us time and installing on the campus the control board which makes it possible for us to broadcast directly from the stage in Graves Hall auditorium."

"And how did the program receive its name?"

"Well, you see in a sense these programs are an echo of that which takes place on our pine-clad campus. For that reason we have chosen the name, "Echoes From the Pines." It has been our endeavor to make this a community program, and to do so, we present those activities which will benefit and interest all listeners. The plan has been to demonstrate the various departments at work by including a wide variety of broadcasts."

"That is all very interesting, Mr. Newcomb. We'll look forward to hearing your voice again on the program tomorrow afternoon."

### GRAVES STUDIO

*Stanley Newcomb, Leal Hall, Virginia Huffman.*

## WHITWORTH CHAPEL HOUR



There's President Warren, the narrator of "The Chapel Hour." Let's get a story from him about this popular radio program.

"Dr. Warren, what is 'The Chapel Hour?' It sounds like a church service."

"'The Chapel Hour' is a kind of service and it emanates each Sunday morning at 9 o'clock over Radio Station KHQ. We have given the program this name because we try to imagine at each broadcast that we are in a chapel bringing our songs and meditation to those who have come."

"When did this broadcast begin?"

"The first Sunday in November, 1940; so you see we are in our fourth year of continuous broadcast."

"What has been the routine of your program?"

"Well, we always open with that lovely hymn, 'O Master, Let Me Walk With Thee.' Some musical group from the college usually sings four or five great hymns of the church. Against the background of organ music by Anita Lewis or Joyce Warren, we offer appropriate poems, and usually a 10 or 12-minute inspirational talk."

"What have been the results of the program?"

"Well, for one thing, it has taken the message of a Christian college into thousands of homes in the Northwest. It has brought students to the college, and has also resulted in bringing a great deal of support. But above everything else, it has been a "chapel" service to untold thousands."

"Have you always been the speaker on 'The Chapel Hour?'"

"Usually, but not always. When I have been out of the city, Dr. Munn, Professor Newcomb, or Professor Koehler have been the very acceptable narrators. And I'd like to say, that Whitworth is grateful to KHQ for the free use of this time."

### CHAPEL HOUR

*Dr. Warren, Joyce Warren, Alvin Franz, Betty Ann Douglass, Jeannette Strong, Dave Wright.*



CHORUS—*First row:* Ruby, Spelman, Mrs. Hopkins, Condit, Evans, Aldrich. *Second row:* Mise, Croft, Zike, Zacher, Ellms, Williams, Lancaster. *Third row:* Fiddler, Scott, Falk, Peelgren, Strong, Laler, DeBall, Farthing. *Fourth row:* Nance, Weyrick, Wacker, Lehn, Dowdy, Douglass, Hunt. *Fifth row:* Andrews, Franz, Deasy, Wright.

## CHORUS



You can't talk about music at Whitworth without talking about Chorus. And that means the Whitworth Chorus. It is good to watch these talented young men and women under the direction of Mrs. Winnifred McNair Hopkins group themselves on the stage. But before we say any more, let's learn something of the activities of this organization during the past year. Here is Miss Marjorie Schauble who has been an outstanding member. Perhaps she can tell us about it. "How about it, Marjorie?"

"I suppose everyone knows of our Chorus since the new radio program, "Echoes from the Pines," went on the air. We have frequently sung on that and the Whitworth Chapel Hour, and we are just a little bit proud of the contribution we have made to the beauty and inspiration of these programs.

"Undoubtedly the most outstanding single performance given this year was our presentation of Handel's glorious 'Messiah' in February at the First Covenant Church. We sang a number of times during the Christmas season and created a harmonious background for the Nativity scenes."

"Can you tell us anything about the outstanding singers in this chorus?"

"I'm afraid if I mentioned all the outstanding singers I'd have to mention more than we have time for. We have four particularly prominent soloists, however: Jeanette Strong, our soprano; Betty Ann Douglas, alto; Robert Saunders, tenor; and Alvin Franz, bass. I can't describe their singing for you. That has to be heard to be appreciated."

"Thank you, Marjorie Schauble. We shall look forward to hearing from the Chorus several times more before this year is at an end."



## THE GIRLS' GLEE CLUB



Where Whitworth is, there is music. We think some of the loveliest melodies we've heard yet come from the Girls' Glee Club, where twenty voices blend in three-part harmony. Listen for them on both our Sunday and daily broadcasts. Service clubs have repeatedly requested their talents. We think June Condit, the mezzo-soprano soloist is a shining star in that constellation of charm and harmony.

### GIRLS' GLEE CLUB

*DeBall, Falk, Scott, Wacker, Stueckle, Cappelen, Deering, Klein, Hopkins, Spelman, Aldrich, Hunt, Holsclaw, Schauble, Condit, Ruby. Accompanist: Sheridan.*

## THE TRIO



More than one Whitworth man has been heard to comment on the picturesqueness of those three lassies, Geraldine Falk, Ginny Huffman, and Marjorie Schauble—to say nothing of their talent in bringing music to our social and religious functions. Marjorie told us they sing because they love to, and that's the best reason of all. Watch their eyes sometime and you'll see what we mean. Actions and costumes accord with the theme of their melodies. Never does an important event arise on the campus but these three are asked to entertain.

### GIRLS' TRIO

*Falk, Schauble, Huffman.*

## THE ORGANISTS



Ask the music majors what they enjoy doing most, and they'll answer with one accord, "playing the organ." Last year the administration purchased an Orgatron for the music department, and this investment has proved to be invaluable. Each quarter the number of organ students has increased—with enthusiasm obvious in the progress made by each student. Chapel services always begin with an organ prelude to create a quiet atmosphere for opening devotions. We might mention here our outstanding organist and pianist whom you have heard many times on the radio networks, Isabel Mise. Her May recital was one of the lovely and truly interesting events of the year on the campus.

### ORGANISTS

*First row: Zenier, Mise, Lipscomb, Bauer. Second row: Reynolds, Huffman, Mrs. Carrel, DeBall, Lewis.*





## MAY DAY



Picture a beautiful spring May on one of the loveliest of natural campuses, and you have the setting for Whitworth's May Day.

For years it has been traditional to elect a May Queen to rule festivities. On that day classes are joyfully abandoned, and everyone enters into the spirit of spring. A charming court of white lattice and cherry blossoms is set up among the trees in the heart of the campus for the Queen and her seven picturesque attendants, waiting for her in their delicate pastel gowns.

This day on which Her Royal Highness approaches the throne on the arm of the May Duke (the student body president) is truly one of the happiest and most eagerly anticipated days of the school year. Music is everywhere, people are chatting gayly, and for a little while the cares and problems of the busy war world are forgotten. Once in a while, a day such as this is needed to give buoyancy to our busy lives. By May Day we're firmly convinced it's spring, and we're all keyed to the busy summer ahead, and days of planning for the coming fall.

Yes, May Day is all that stands for beauty, charm, and wonderful living. And that's Whitworth.

### *MAY QUEEN AND COURT*

*Queen: Helen Ghormley. Honor Attendant: Eleanor Hook. Princesses: Zutrau, Warren, Reynolds, Huntley, Bovee, Ausink.*

## SPORTS



This year, because of "international interference," the college athletic program was affected considerably. However, in spite of it all, with the cooperation of the men of the Army War Training Service stationed on our campus, a good basketball program was worked out in collaboration with our own men. Everything was going fine, until once again we experienced upset, this time by Uncle Sam. When the War Training Service Program was liquidated, the bottom fell out of the basketball schedule.

Up to that time, however, the fellows had been doing a grand job. They practiced hard, and played hard, and were right in there pitching at every game. They had had games with Fort Wright, Gonzaga, Geiger Field, the Eastern Washington College of Education and other outstanding teams.

The women, too, have carried on admirably in their support of athletics. Although their program is limited, their spirit is not less. They have shown their enthusiasm by their attendance at W.A.A., their turnouts, and their participation in the inter-class tournaments. More girls than ever before have taken part in the women's program.

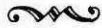
Tennis promises to give plenty of excitement; and so do a variety of other outdoor sports—baseball, archery, badminton included.

Under the excellent supervision of Dean Munn, Professor Koehler and Miss Ruth Gouldin, we are proud to say that considering the times the athletic program has been more than successful.

(Never let it be said that the girls can't "Carry On!")



## MEN'S BASKETBALL



"Hello, Dean Munn, how did basketball go this year? We hear you were coach again."

"Yes, indeed. We put up some hard fights, too, and came through with flying colors. Pirates always do, you know, and the boys this year certainly up-held the tradition. The men in the War Training Service played well, too.

"I want to mention particularly our only veteran varsity man, Al Brown. He took the top honors awarded at the Sports Banquet this year. Besides earning his sweater and letter, he was elected honorary captain of the team, and was voted by his teammates winner of the Pirette Inspirational Award. Others to receive their letters this year were Ralph Collins, Tom Haji, Bert Kimura, Sadao Kuroiwa, Dick Schwab, Tom Summerson, Tomi Terao, Larry White, and George Yamamoto."

### MEN'S BASKETBALL

*First row: Haji, Terao, Kimura. Second row: Yamamoto, Summerson, Brown, Schwab, White, Munn.*

## GIRLS' SPORTS



"Miss Gouldin, since you are the head of the Women's Athletics department, would you like to tell us about the sports in which the girls participate?"

"Well, I will say that Whitworth can truly boast the largest response in Women's Athletics that it has had for several years. It was surprising how many of the girls turned out for volleyball at the opening of the season, and how hard they played! We organized teams that gave us some exciting competition and we all had such a good time that we were really sorry when it was over."

"But volleyball was not the only sport the girls took part in, was it, Miss Gouldin?"

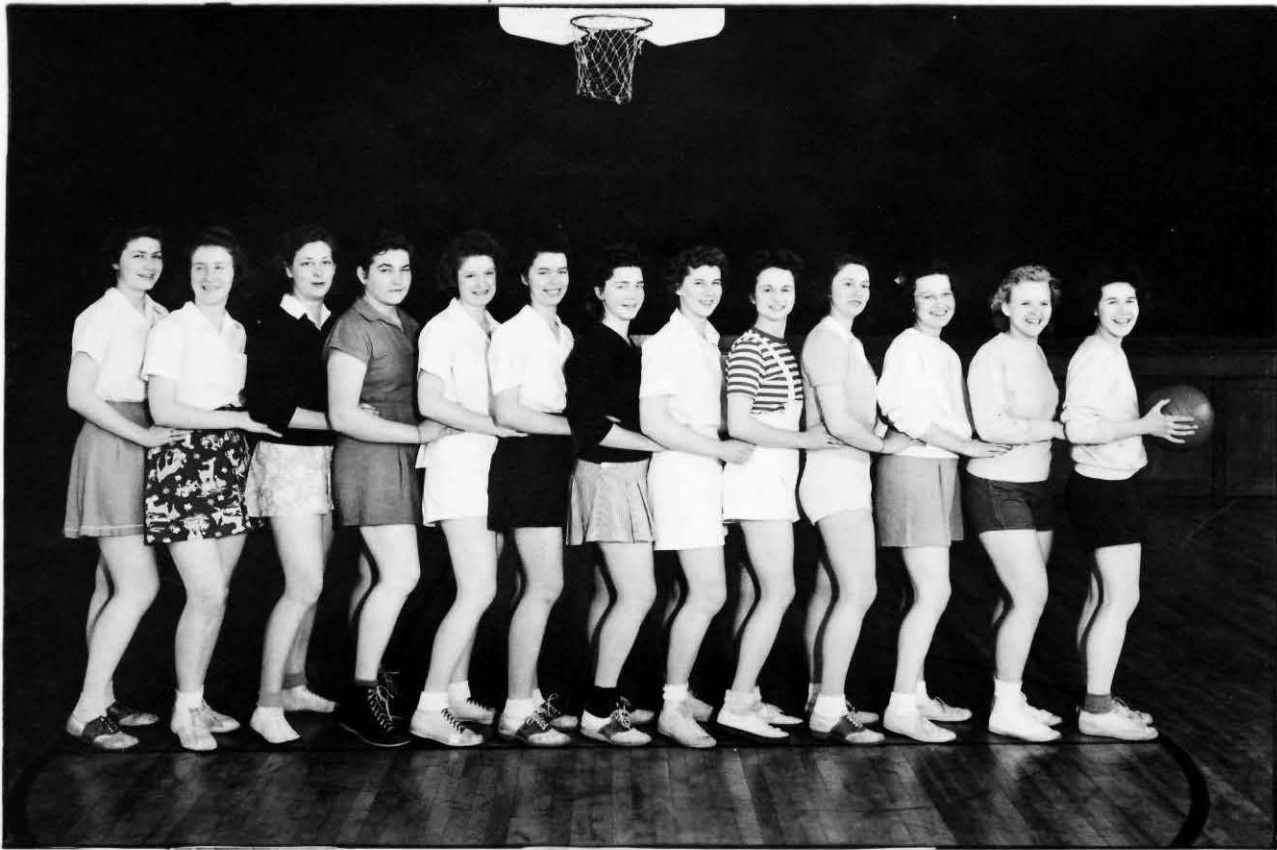
"Oh, no indeed. We followed that up with basketball. Here, too, the number that turned out was astonishing. Each class organized a team and we held a tournament. You couldn't guess who won?"

"Who?"

"The Freshmen! Virginia Shepherd was their captain and they were really good.

"I mustn't forget either that a great deal of the credit for the success of our athletics program goes to Jeanne Henderson, our W.A.A. sports manager. Her diligence and enthusiasm was an inspiration to every girl."





# WOMEN'S ATHLETIC ASSOCIATION



Here is Marjorie Klein, president of W.A.A., ready to tell you of her active organization.

"Tell us about W.A.A., Margie."

"Well, the Women's Athletic Association proved to be one of the most active organizations on the campus this year.

"In addition to its annual Big-Little Sister tea, given in collaboration with Alpha Beta, and its backing of all women's athletics, a new note was added in the sponsoring of a Harvest Queen, chosen by the Student Body and presented at the annual Homecoming basketball game. The honor this year went to a freshman, Ellen Ann Tharp.

"Other activities include the Fall Gypsy Feed and the Spring Frolic, both held down at Orpha Lodge, W.A.A.'s cabin on the Little Spokane. Initiation of all new members was held at the Spring Frolic, all those who had earned the required number of points being eligible.

"We were happy to welcome into our group such a large number of new freshmen women.

"At the Annual Awards Banquet at the Country Club, Yvonne Green was awarded her sweater and Esther Brown and Dorothy Munce received their letters. The year's officers (besides myself) were: Vice-president, Yvonne Green; Secretary, Dorothy Munce; Treasurer, Joyce Warren; Sports Chairmen, Jeanne Henderson, Edna May; Adviser, Mrs. Carrel.

## WOMEN'S BASKETBALL

*Wacker, Dowdy, Black, Zacher, Shepherd, Hubel, Garwood, Zenier, Schauble, Barnes, May, Green, Cromer.*

# SPORTS BANQUET



We would like to tell you of one of the outstanding events of the year—the Sports Banquet, at which awards were presented or citations made in all fields.

Top honors in athletics went to Al Brown, who in his junior year has earned his third major "W" and his letterman's sweater, has been elected honorary captain of the basketball team, and has received the Pirette Inspirational Award.

For being the best all-round senior (for outstanding scholarship, participation in school activities, leadership, and popularity), the much coveted Alumni Trophy was deservedly awarded to Miss Eleanor Hook.

In women's sports a W.A.A. sweater was presented to Yvonne Green and letters were earned by Esther Brown and Dorothy Munce. For their expert yell leading, Marilou Cappelen and Peggy Cromer were awarded the Whitworth "W".

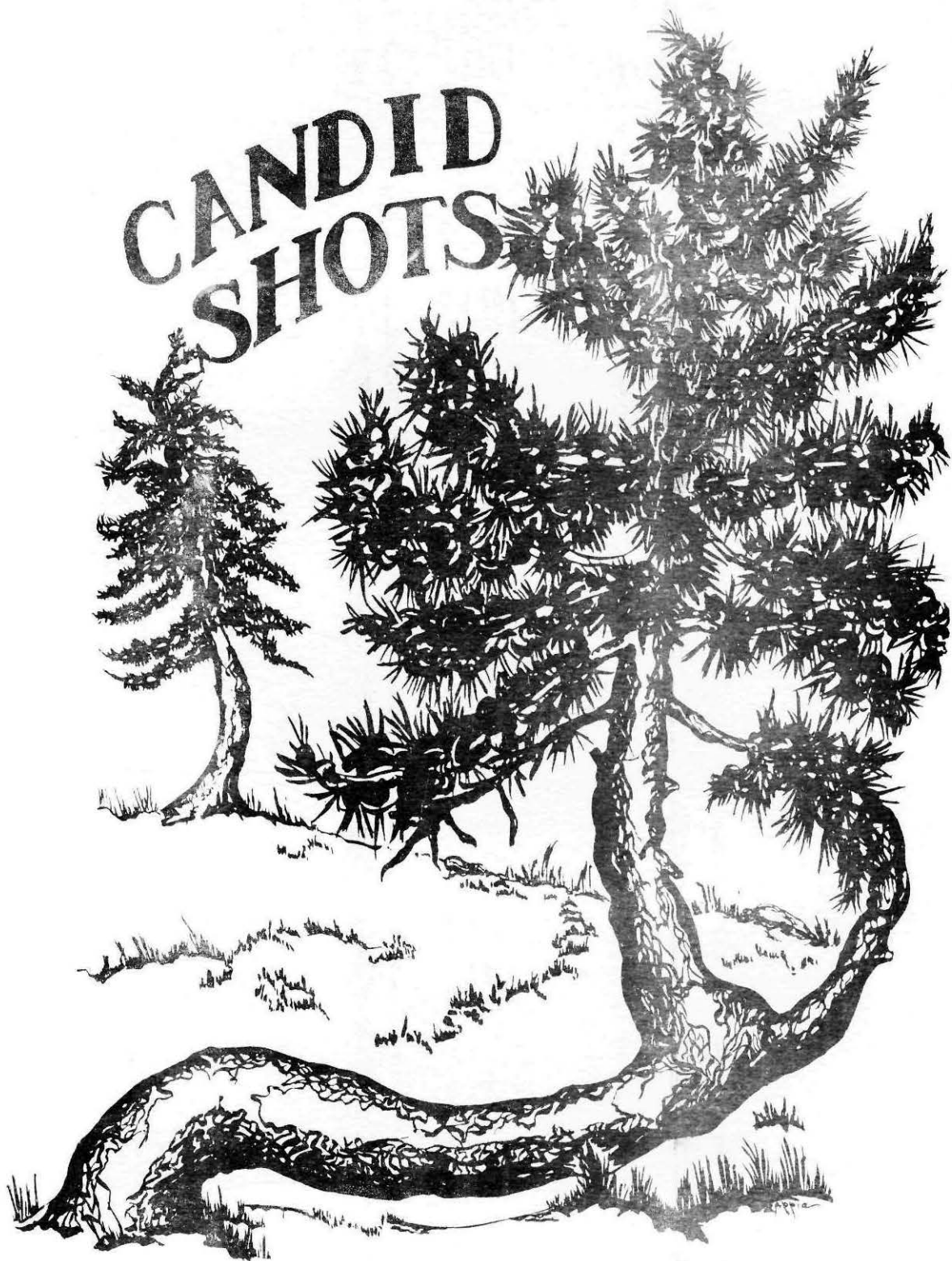
The Student Body executives and the editor of the *Natsihi* were presented with keys.

This concludes the program, "Whitworth College in the Service." Tune in next year—same time, same station, for the 1944-1945 review of events and personalities.

## W. A. A.

*First row: Ito, Hammersburg, Compher, May, Munce, Green. Second row: Huntley, Farthing, Barnes, Specker, Shepherd, Black, Brown, Holder. Third row: Hubel, Gouldin, Carrel, Johnson, Lehn, Reynolds, Zacher, Lancaster, Warren, Klein, Ghormley.*

# CANDID SHOTS





Best wishes Senior Class  
of '44 . . .



We are proud of our  
WHITWORTH COLLEGE  
and for the Christian  
Education taught



**McGOLDRICK  
LUMBER COMPANY**

SPOKANE  
WASHINGTON

**WYLIE-CARLSON**

PRESCRIPTION  
DRUGGISTS



The Store of Personal Service

Phone Main 1188  
Sprague at Wall

SPOKANE WASHINGTON

SPOKANE'S LARGEST  
JEWELRY STORE

**Diamond Merchant's**

For 57 Years



**DODSON'S**

517 Riverside Spokane





WOODWORK  
BUILDING MATERIALS  
LUMBER



**EXCHANGE  
LUMBER & MFG. CO.**

---

**CURLEW...**

For 36 years the Inland Empire  
Discriminating Dealers have chosen  
for particular customers these  
CURLEW Products

ICE CREAM  
EGGS  
BUTTER  
CHEESE

Made its way by the way its made

Spokane    Grand Coulee  
Chewelah

**BURGAN'S**

MONEY SAVING FOOD STORE



YOU'LL SAVE AT  
BURGAN'S

36 STORES IN INLAND  
EMPIRE

---

For Every Fuel Need, Call—  
**BROADWAY 2101**

Sizzling Heat Headquarters

**Great Western  
Fuel**

E. 222 DeSMET

---

May God's Blessing be upon you  
—Class of '44 . . .

**Knox Presbyterian**

Rev. C. F. Koehler, Pastor

---

**Whitworth Station No. 2**

"Everything you need for that  
Dorm snack or picnic."

J. LaROSE



**A & K**



**QUALITY**

**MEATS**



**Since**

**1888**

---

WHITWORTH STATION  
NO. 2

**Texaco Certified Dealer**

**SERVICE**

For All Cars

Gas, Oil, Greasing and  
Battery Service

---

KUPPENHEIMER CLOTHES  
ARROW SHIRTS  
STETSON HATS

**FOGELQUIST'S STORE**

Sprague & Howard

Spokane

**DIAMOND RINGS YOU LOVE**

Your Money's Worth Always  
at

**SARTORI**

Master Craftsman in  
Jewelry



Wall Between Riverside  
and Sprague

SPOKANE

WASHINGTON

---

**MILLER-DERVANT  
COSTUMES**

1015-1017 W. Riverside  
Ma 6642

---

**HULL-RODELL MOTOR,  
Inc.**

See us now for service on  
any Chrysler Product

1102 Sprague

Spokane



WHITWORTH COLLEGE





To The Graduates—

good luck, and best wishes for  
Success on your journey thru this  
life is the wish of

**EUGENE'S FLOWER  
SHOP**

Remember your Best Girl with  
Flowers from Eugene's—  
Although you may be  
Far Away . . .

**NORTH 7 WALL MAIN 1173**

HERE'S LUCK!

To Whitworth Graduates—  
Greetings, Congratulations and  
a reminder from Reddy Kilowatt,  
your electric servant, of your  
heritage as an American — of  
your right to work at the job of  
your choosing, to exercise your  
own initiative and enterprise in  
our American way of free en-  
terprise. . . .

**The WASHINGTON  
WATER POWER  
COMPANY . . .**

Congratulations and Best Wishes

SENIORS  
OF WHITWORTH  
COLLEGE

**RIVERSIDE  
WAREHOUSE**

SPOKANE, WASHINGTON

BEST WISHES TO GRADS  
OF 1944

**Ideal Laundry and  
Lusterized Cleaners**

E. 17 Boone Spokane

Compliments of

**Fourth Presbyterian  
Church**

E. C. Deibler, Pastor

BALDWIN AND DAKOTA STS.

9:45 a.m.—Sunday School.

11:00 a.m.—Worship Service.

6:30 p.m.—Christian Endeavor.

7:30 p.m.—Gospel Service.

Wednesday Midweek Service, 7:45 p.m.



CONGRATULATIONS  
WHITWORTH GRADS

upon successful completion  
of your college work



**TULL & GIBBS**

Spokane's Complete Home  
Furnishers

**FIRST AT WALL**

---

COMPLIMENTS

OF

**LUMBER  
BY-PRODUCTS  
COMPANY**

West Ninth and Trent Avenue

Our Compliments to the  
Graduating Class  
of 1944 . . .

**Frank H. Lawton & Son  
Printers**

SPOKANE

B. 0150

N. 608 Monroe

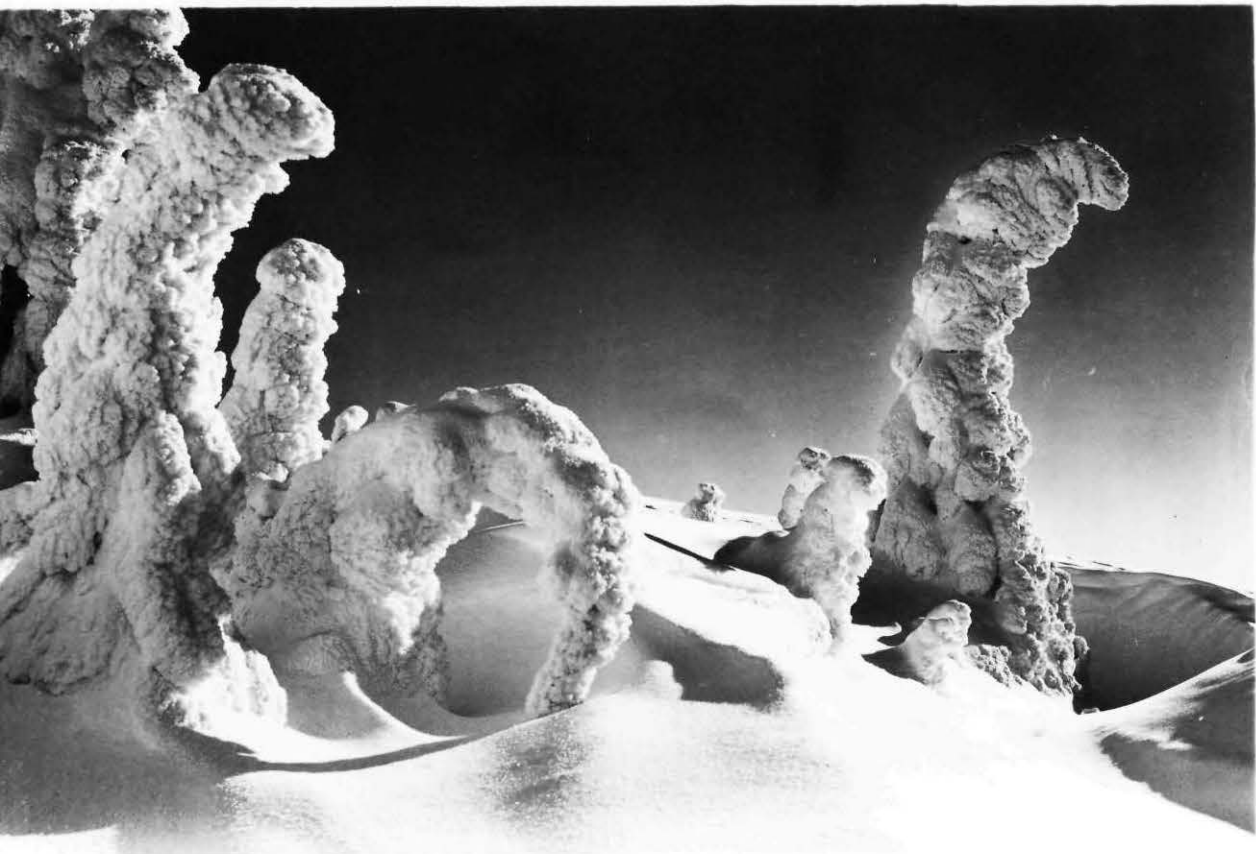
---

**Compliments**

**of a**

**Whitworth**

**Friend**



WINTER ON MT. SPOKANE

Photo by Leo M. Oestreicher

CONGRATULATIONS, GRADUATES!

FROM

**LEO'S STUDIO**

University Place

Spokane, Washington

OUR SPECIALTY IS SCHOOL PICTURES, ANNUALS  
AND KODAK FINISHING

**Parker Pen and Pencil  
Sets . . .**

The Gift for a College Graduate

**TYPEWRITERS**

For Rent Only  
We rent all types of  
typewriters . . .

1 month - - - - \$3.00  
3 months - - - - \$7.50

**DELIVERY EXTRA**

**"A Key to Success"**

New Scientific Lessons in touch  
typing with a chart.

A Modern Streamlined  
Method for Quick Learning  
at home

**KERSHAW S**

612 Sprague

**SPOKANE**

**FINE PICTURES**

Enhance the Beauty

**IN FINE HOMES**

Come and see the Attractive  
Showing of Well Framed Pic-  
tures in our Art  
Department



**JOHN W. GRAHAM  
CO.**



**WESTERN  
SOAP COMPANY**



Manufacturers of  
**SOAPS OF ALL KINDS**  
Jobbers in Alkalies of all Kinds  
and Varied Lines of  
Industrial Products



SPOKANE B 2105

---

Congratulations to the  
Graduates of 1944 . . .

**Western Pine Mfg. Co.,  
Ltd.**



Manufacturers of  
**PONDEROSA PINE  
PRODUCTS**



Main office and factory  
SPOKANE, WASH.

Best of luck to the  
Whitworth Class  
of 1944.



This space is especially dedicated  
to those men and women who are  
going forth from our campus to  
serve God and Country. . . .

Our thoughts are with you always,  
and we hope that you will be  
back with us soon.



**POSTELL  
PRODUCE  
COMPANY**

Congratulations Grads . . .

Packers of M & K Brand  
**C O F F E E**

Hotels, Restaurant, Institution  
Supplies

**Matthews and Kerr, Inc.**

Spokane, Wash.

---

"Study to show thyself approved  
unto God, a workman needeth not  
to be ashamed, rightly dividing the  
word of truth" . . . II Timothy 2:15

**BIBLE BOOK STORE**

S. 8 Howard

---

**CORBIN PARK CLEANERS**

"Wear Clean Clothes"

Congratulations to the  
Graduating Class  
of '44

N. 2814 Monroe

B. 2775

---

Compliments of the

**Natsihi Staff**

Compliments of

**the Junior**

**Class**

---

Compliments of

**the Freshman**

**Class**