

1943

## Natsihi Yearbook 1943

Whitworth University

Follow this and additional works at: <http://digitalcommons.whitworth.edu/yearbooks>

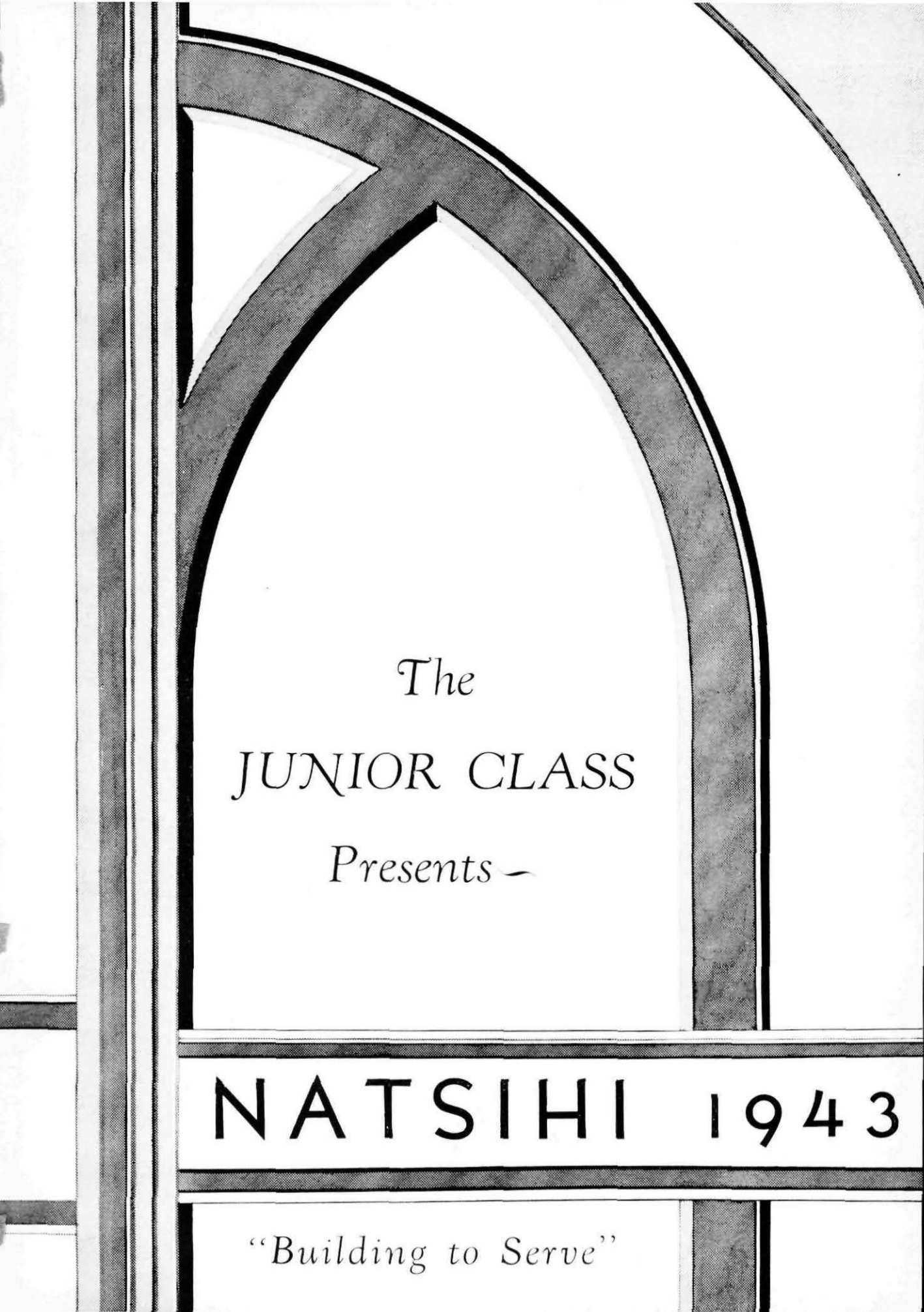
---

### Recommended Citation

Whitworth University, "Natsihi Yearbook 1943" Whitworth University (1943). *Natsihi Yearbook*. Paper 20.  
<http://digitalcommons.whitworth.edu/yearbooks/20>

This text is brought to you for free and open access by the University Archives at Whitworth University. It has been accepted for inclusion in Natsihi Yearbook by an authorized administrator of Whitworth University.



A decorative archway frame made of dark, textured lines, framing the central text. The arch is pointed at the top and has a thick, dark border.

The  
JUNIOR CLASS  
Presents -

NATSIHI 1943

*“Building to Serve”*



*"Where McGregor sits, there is the head of the table."*

- Because of his tireless campaigning for the completion of that truly fine student center, Jay P. Graves Auditorium-Gymnasium,
- Because of his faithfulness in holding before the students of Whitworth his ideal of all-out service for Christ,
- Because of his commitment to the ideal of "building men for God,"
- Because of his faith in youth as builder—
- Because in all this he has to no small degree inspired the theme, "Building to Serve," we, the junior class, dedicate Natsihi, 1943, to Dr. Frank Furniss Warren, president and friend.

## *The President's Message to Marching Youth*

ANOTHER year has passed and once more I have the pleasure of bringing to the Whitworth family a few words of greeting and blessing as we come to the end of another year. As I write these words, I am looking out across the campus dear to the hearts of so many of us—a campus green and beautiful and quiet. And yet I realize with ever-increasing knowledge that it is not symbolic of the world in which we are living, you and I.

Marching youth—youth who are called now as in times past to leave the quiet and warmth and protection of home and the opportunities and friendships of the campus to go into a world of strife, bloodshed, and possible death. Some of us who lived through the world of another day hoped and prayed that this hour would never come again to American youth, but we failed to build a world safe and secure because it was basically good.

Marching youth—youth made in the image of God and made that he might live—marching out to battle. Youth who should be studying this coming year on the campus of Whitworth, facing long months of rigorous training, bitter hardship, and personal sacrifice. Marching, however, not without dreams and aspirations—marching that there may come back again a world of peace and kindness, brotherhood and love.

Marching youth. Lighthearted and free your feet have carried you across well-beaten paths among our pines and in and out of familiar halls. Now you are marching across burning sands and swampy jungles, and your footsteps have led you to other lands. Do not lose your vision; do not lose your way. Follow that great light which shone upon your pathway here—the Light that came into the world to lighten every man. Never forget His vision calls for a world of peace and beauty. Remember as you march that if you keep near to this man Christ, some day—in His day—your footsteps may again turn homeward and you will find yourself back living among your friends, and preparing for that greater life God has for you—a life of service and of leadership. Together we shall build out of the ruins of this day a new and better world.

Marching feet. We pray for the hour when you may join in the march of victory and when once more your footsteps may ring through the halls of Whitworth.

## CALKINS



To find Dr. Munn, Mrs. Paul Gustafson, and Dr. Schlauch these last months has been to glimpse the activity at Calkins Air Terminal, situated southeast of the campus on Division. There these faculty members have been organizing ground school training courses for men participating in basic aviation at the airport.

The men at Calkins take two hundred and forty hours of ground school in eight weeks. Courses in mathematics and physics are those particularly emphasized. Not only are these "mental developers" vital to pilot training, but the men will receive college credit for the work after the war. Two hundred and eleven "Whitworth College students" have completed the ground school requirements this year.

In addition to the presentation of the training curriculum, Whitworth is under contract with the Army to provide board, room, and transportation facilities. The college owns a barracks holding fifty-eight men on the site of the terminal. Regularly during the winter quarter, the Calkins trainees used Graves Hall on the campus for instruction in physical education.

In the same spirit of patriotism shown by so many other colleges in America, Whitworth is sacrificing energy, facilities, and men for an early victory!



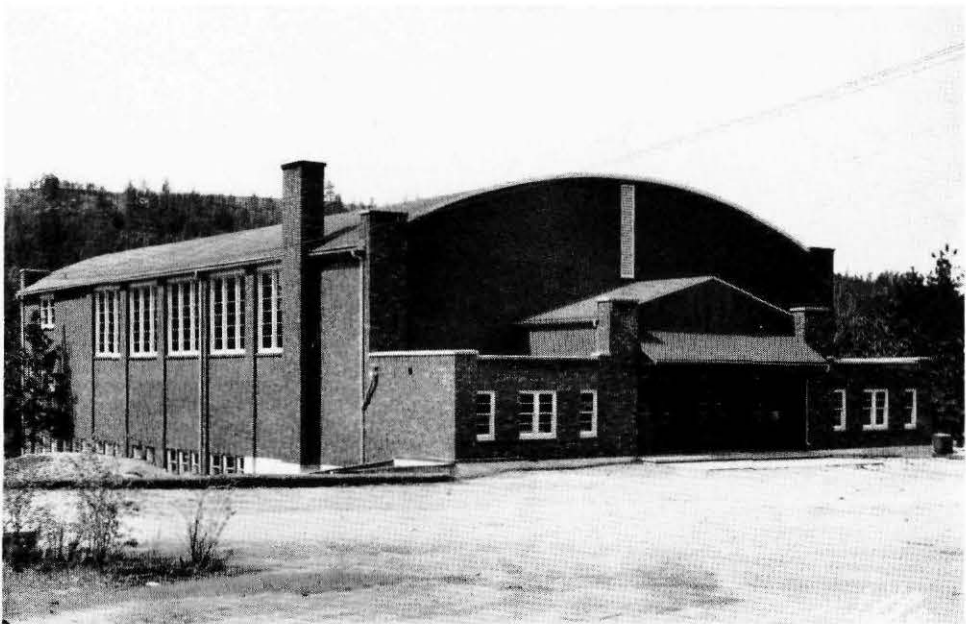
## JAY P. GRAVES HALL

That Whitworth is building and growing is not to be doubted. Jay P. Graves Hall, beautiful gymnasium-auditorium pictured below, is evidence of this great step forward. Never before have such facilities been available to the departments of physical education, music, and dramatics, to say nothing of student organizations.

Whitworth has now the finest and newest gymnasium in the Spokane area. Surrounding the large playing floor are bleachers with capacity for seating at least five hundred people. Boxing and wrestling rooms with showers and lockers complete a greater physical education set-up. At one end of the gymnasium court a fine stage has been constructed. No longer need plays and operas be presented downtown. Whitworth has its own gymnasium and auditorium!

In the twenty-three rooms of the basement many groups are active. The Student Commons room, editorial rooms for *Natsihi* and *Whitworthian*, practice rooms for piano, classrooms, and dressing rooms are some of the outstanding centers of fun and study.

Thus it is that through the clouds of war a great vision has been realized. The Lord has blessed us in the building, until the massive brick structure, modern in every way, is complete.



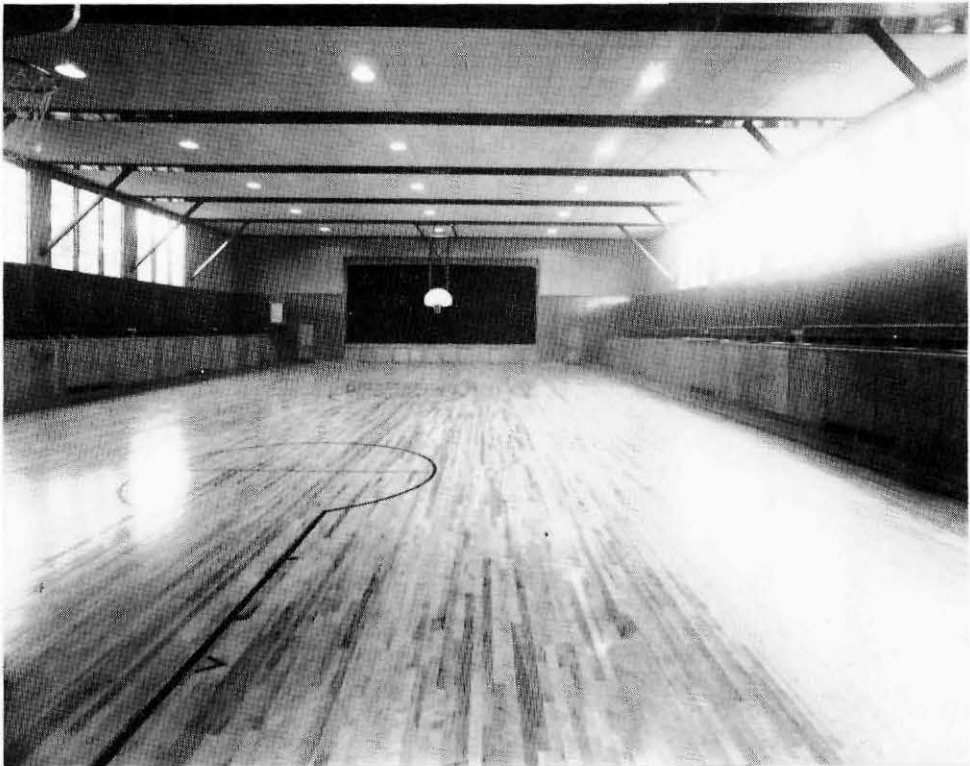
## AUDITORIUM

Whether it be the swish of the ball through the basket or the sweeping gesture of a Romeo to a Juliet that stirs an audience to its feet in Graves Hall, Whitworth is proud of the auditorium. Hues of white, violet, tan, and oak appear on the walls and ceiling. Beauty converges on and about the spacious stage and its rippling curtain.

The large maple floor is splendidly finished. Basketball stars thrill at the speedy stops and tricky pivoting possible over the hardwood.

When crowds gather in her aisles, the auditorium lifts her head proudly. Such is her pose when *Family Portrait* or *The Merchant* is presented. A bit sterner she seems at Commencement. In the chapel services, the great auditorium bows her head in humility as the light of the gospel sounds forth, or the sweeping strings of the violin vibrate sympathetically.

The Whitworth auditorium knows her place in our hearts and lives, and we gratefully thank her for her contributions.





## COMMONS

Most people seldom see a "dream walking." On the other hand, most people will walk a long way to "see a dream"—or its fulfillment.

The dream to which reference is made comes with the realization of a greater dream. Whitworth's new gymnasium-auditorium, Jay P. Graves Hall, has been completed, and with it, the Student Commons Room.

The Commons Room fills a fifty-year-old gap in A.S.W.C. life at Sumner, Tacoma, and Spokane. The students desired a chatter corner where the best could be had over a milkshake or a coke, and the blues could be vigorously slammed in the corner in some other manner than "kicking the bark off the Whitworth pine trees."

Today students and faculty are relaxing together in the Commons during odd moments. Either they are playing chess, checkers, and pingpong, or they are smacking their lips over refreshments served by Mr. and Mrs. Lantz at the counter. Sometimes, there are Sunday evening firesides, birthday parties, and class parties. So the Student Commons Room is, and will remain, the battleground of the social warriors—and furthermore, a place where one can dream.



**Y**OU say you are able to leave it,  
This land of the pine and its cone:  
I've been there and I can't believe it,  
Because in the twilight alone

You find yourself dreaming of valleys  
That lie velvet-green in the sun,  
Of Five Mile uplifted to heaven,  
Of streams where swift silver trout run.

We give you this book as a picture  
Of the campus the pine trees adorn,  
A record of dreaming yet doing,  
A vision of buildings unborn.

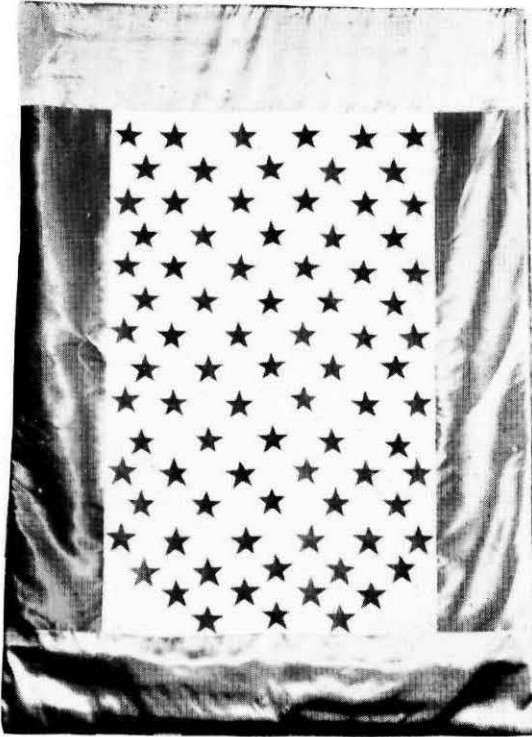
Our college can never know bound'ries  
For we grow as God gives us His grace;  
Serving and seeking and striving,  
We live in the smile of His face.

—R. M. H.



HATS OFF!

## TRIBUTE



This is a tribute to a quiet boy and a fun-loving boy, whose lives were suddenly taken away in the line of duty. In doing their part to relieve their country's labor shortage, they gave their lives.

Their worth to the college is not easily measured. Diligent in their studies, friendly and helpful to their fellow students, courteous to teachers—of Francis Stevens and Ivan Swanby it may truly be said they stood for Whitworth and her ideals.

Our personal tribute to you, Francis and Ivan—you gave your lives for your country.

## SERVICE MEN

Many of the men who started this year at Whitworth are now serving their country in a new and different way—in the armed forces. In the army now are Bob Blodgett, Glen Brincken, Vernon Forkner, Lawrence Forland, Loren Gothberg, David Holmes, Ray Klefstad, Robert Lee, Don McInturff, Merlyn Philo, Russell Rosenkranz, Bob Shreve, Jay Tomlinson, and Leslie Yates. The Army Air Corps has claimed Bernard Gwinn, Hobart Jenkins, Wilfred Landrus, Ray Roestel, and Donald Thomason.

Alvin Burkhardt, Maurice Davis, Den Kaelin, and Paul Vinther are in the navy, and Rolla Riley is in the marines.

Of those remaining in school, many are in one or another of the reserve programs. Robert Brask, in the E.R.C., has been deferred because of special preparation. In the Navy V-1 program are Frank Burgess, Jack Frost, Amon Groves, Stanley Gwinn, Don Henker, Tom Jones, Harry Ladd, Bob McGrath, Keith Medley, Bob Paeth, Bill Paeth, George Redkey, Bill Schlauch, Den Steele, and Harold Wimpy. The V-7 program includes Dick Byquist, Paul Grams, Paul Merkel, Robert Savage, Everett Scott, Sam Smith, David Thorndike, and Don Woods. Lewis Messex, Jim Peterson, and Paul Walther are in the Marine reserve, and Don Lancaster in the Army Air Corps reserve.

Deferred to work on the farm are Burton Bailey, Grover Collins, Jim Collins, Philip Holmes, Hubert Hull, Marvin Moos, and Roy Peringer.

## ADMINISTRATION



MERTON D. MUNN  
Ed.D., University  
of Cincinnati  
*Dean*  
"Barkis is willin'."



MARION R. JENKINS  
M.A., New York University  
*Dean of Women  
Bible and Christian  
Education*  
"A little bird told me."

J. L. OAKES  
A.B., Colgate University  
*Business Manager*  
"Alter supper walk a mile."



ESTELLA E. BALDWIN  
M.A., Whitworth College  
*Registrar  
Bible and Christian  
Education*  
"It is by presencence of mind in  
untried emergencies that the  
native metal . . . is tested."



MARK KOEHLER  
A.M., Princeton  
Th.M., San Francisco  
Theological Seminary  
*Bible and Christian  
Education*  
"I count life just a stuff  
To try the soul's strength on."

## NATURAL SCIENCES



PAUL V. GUSTAFSON  
M.S., University of Illinois  
*Biology*  
"None but himself can be  
his parallel."



HORACE E. CHANDLER  
S.T.M., Western  
Theological Seminary  
Ph.D. pending (University of  
Pittsburgh, 1943)  
*Engineering*  
"A man can't be hid."



MARY BOPPELL  
B.S., University of  
Washington  
*Home Economics*  
"Gentle in manner, firm in  
reality."



MARTIN WILLIAMS  
M.S., University of Alabama  
*Chemistry*  
"When I was in Alabama, I  
was in a better place; but travelers  
must be content."



JOHN ARVID CARLSON  
M.S., University of  
Washington  
*Mathematics and Physics*  
"Much matter decocted into  
few words."

## SOCIAL SCIENCES

GUSTAV H. SCHLAUCH  
Ph.D., University of  
Washington  
*Sociology*  
"... a friend to human race."



OSCAR KIRK DIZMANG  
M.A., University of Chicago  
*Economics and  
Business Administration*  
"Despatch is the soul  
of business."



JAMES WILLARD  
COUNTERMINE  
D.D., Buena Vista College  
*Bible and  
Religious Education*  
"And gladly wolde he lerne  
and gladly teche."



ERNESTINE EVANS  
M.A., Washington  
State College  
*Secretarial Science*  
"Nothing great was ever  
achieved without enthusiasm."



FRANCIS TILEY  
HARDWICK  
Ph.D., University of  
Washington  
*Education, Psychology  
and Greek*  
"His high-erected thoughts  
look'd down upon  
The smiling valley of his  
fruitful heart."



LAVERNE KENNETH  
BOWERSOX  
Ph.D., Ohio State University  
*History and  
Political Science*  
"Histories make men  
wise . . . ."

## LETTERS AND FINE ARTS



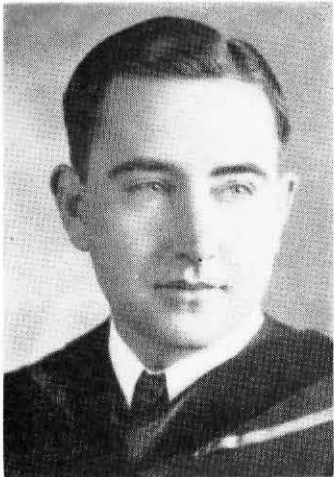
WILMA L. KENNEDY  
Ph.D., Yale University  
*English Language and  
Literature, Journalism*  
"At Learning's fountain it is  
sweet to drink,  
But 'tis a nobler privilege to  
think."



WINIFRED McNAIR  
HOPKINS  
B.A., Albany College  
*Voice*  
"A cheerful life is what the  
Muses love . . ."



ELIZABETH GUSTAFSON  
M.A., University of Michigan  
*Librarian*  
"There is no Past, so long as  
Books shall live!"



STANLEY SPENCER  
NEWCOMB  
Th.B., Princeton  
*Public Speaking  
and Dramatics*  
"A good play needs no  
epilogue."



ANNA JANE CARREL  
Mus.M., Cincinnati  
Conservatory of Music  
*Piano, Organ*  
*Assistant Dean of  
Women*  
"— And still I am a  
pilgrim . . ."



OTTO G. BACHIMONT  
M.A., State  
University of Iowa  
*Modern Languages*  
". . . your devoted friend,  
sir, the manifold linguist."



## WHITWORTH



JACK STARRETT

"In all thy humours, whether grave or mellow,  
Thou'rt such a touchy, testy, pleasant fellow;  
Hast so much wit, and mirth, and spleen about thee,  
That there's no living with thee, or without thee."

LOREN GOTHBERG

"Sir, your wit ambles well;  
it goes easily."



MARY ELAINE DUGAN

"Pretty to walk with,  
Witty to talk with,  
Pleasant to think on, always."

**ELECTS—**



KAY SANBORN

" 'Tis all of the red and the gold, Kay S.—  
'Tis alive as the silk of the floss—my guess;  
'Tis a radiant flame by no braid to be tamed,  
'Tis a thing to be jewelled and kissed and acclaimed —  
'Tis the loveliest hair in the world, Kay S.—"



SAM SMITH

" . . . I have ever thought,  
Nature doth nothing so great for great men,  
As when she's pleas'd to make them lords of truth.  
Integrity of life is fame's best friend . . . "

ELEANOR HOOK

"It is happy for you that  
you possess the talent of pleas-  
ing with delicacy."





## **EXECUTIVE BOARD**

Our "hats are off" to these who have so faithfully served us: Sam Smith, president; Jack Starrett, vice-president; Eleanor Hooks, secretary; Loren Gothberg, auditor; Richard Schwab, Student Council representative; and Dean M. D. Munn, administration adviser.

## **SOCIAL COMMITTEE**

Remember those grand "happy fun" times you had Freshman Week, the All-college Mixer, Homecoming Banquet, Snow Frolic, Colonial Party, All-Awards Banquet? These and many others didn't just happen. Behind the scenes were the members of our social committee: Jack Starrett, chairman; Mary Elaine Dugan, Virginia Hodge, Kay Sanborn, Russell Rosenkranz, class representatives, and Miss Jenkins, faculty adviser. Thanks to the effective planning of this group, the social program of the student body has been a well-rounded one.



## STUDENT COUNCIL

An example of that democracy for which our nation is now fighting is the A.S.W.C. Each club, organization, and class is represented on the Student Council and has a part in directing the program of activities of the student body.

This year has presented a variety of new problems and situations for the council's consideration. In cooperation with the Executive Board, it has given valuable aid in the promotion of several special projects including Service Men's correspondence and the President Warren Birthday drive. Perhaps its greatest "headache" was the arranging of a suitable budget to meet "quarter system" needs. Elimination of football and a larger basketball program led to some budget difficulties, and later, reallocation of student funds was necessitated by the purchase of our war bond.

The Student Council has functioned efficiently and promptly throughout the year in every matter that has arisen. Its recommendations and services have added much to A.S.W.C. activities.

The membership is made up of presidents and vice-presidents of all student organizations, as well as the editors and business managers of the *Whitworthian* and the *Natsihi*.

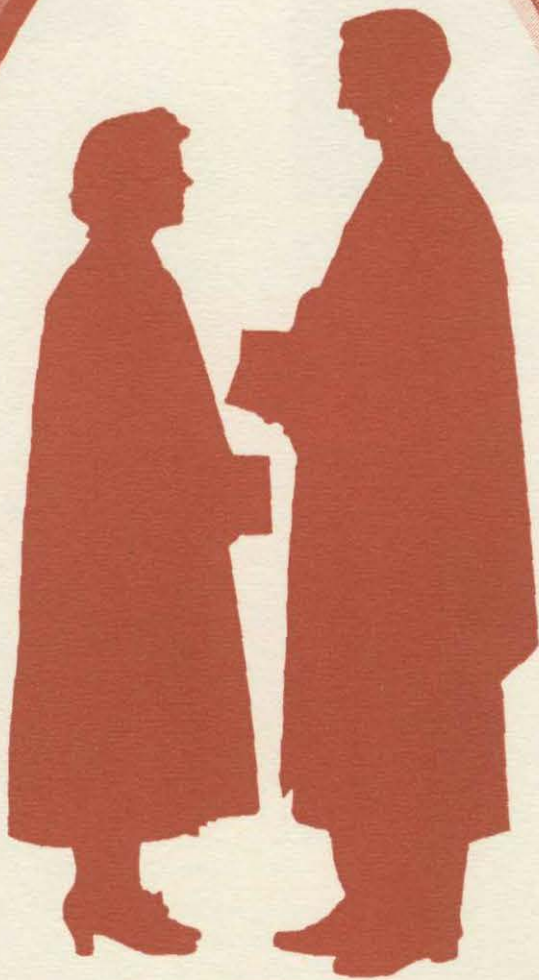
*First row*—Audrey Brault, Eleanor Hook, Kay Sanborn, Marion Ruby, Florence Reynolds, Florence Johnson, Helen Jo Jamieson, Marjorie Klein. *Second row*—Sam Smith, Paul Merkel, Don Steele, Loren Gothberg, Bill Paeth, Margaret Skeels, Everett Scott, Helen Ghormley, Dick Schwab, Stan Gwinn, Merle Wood, Vernon Forkner, Kenneth Monette, Hubert Hull.



ON THE MEMORIAL  
TO FRANCIS STEVENS

O youth whose life was given at duty's call,  
Whose heart's to beat no more in joy or toil,  
Thou fair who walked so quiet among these halls  
Now slumber 'neath the grass of native soil.  
And this is then of thee memorial,  
A picture of our precious Savior's face,  
*Who died (like you), a deditorial,*  
Who died to save the world with matchless grace.  
And now as from this picture I away,  
Resolve from God anew sweeps o'er my heart,  
To live a life that's true, to praise, to pray,  
To consecrate myself again for Him.  
—Know, Francis, life for thee was not in vain:  
Thou caused poor man to Jesus turn again.

—John Henricksen.



ON THE HOUR



MARY ELAINE DUGAN

*Social Chairman*

Major: Home Economics

Minor: Public Speaking

Transfer from C. P. S.; treasurer and president of W.A.A.; treasurer of Alpha Beta; Sefelo; Christian Endeavor. Whitworth's one-and-only Dugie; need we say more?



LOREN GOTHBERG

*President*

Major: Biology

Minor: Chemistry

Transfer from Yakima Valley Jr. College; Alpha Chi treasurer; Alpha Psi Omega; A.S.W.C. auditor; president of Medici Futuri; vice-president of Christian Endeavor; Who's Who Among Students. Specialist in science and dramatics, and super-humorist in spite of it all!

## SENIOR CLASS

The Seniors may well aspire to positions as F.B.I. agents for they managed to stage a successful sneak from the pursuing Juniors. Plans were laid in mid-winter when several of the class members met for a waffle supper at the home of Dr. and Mrs. Hardwick, the advisers whom the class has elected for three successive years. When the day came in early April, the Seniors casually drove away from the campus, waving goodbye to the long-faced and unprepared Juniors. They were not found until that evening when the two classes were reunited at a fireside at the Hardwick home. Mary Elaine Dugan, as social chairman, led the Seniors in the rest of the year's program of "fun through fellowship," which included a joint party with the Juniors in the fall. In the spring the Seniors were honored at several parties—by the Juniors, by Dr. and Mrs. Warren, and by the alumni association.

The Senior officers—Loren Gothberg, president; Lenore Trevitt Peterson, secretary; and Louise Holder, treasurer—capably handled all the problems that confront a class graduating in a war year. During the spring quarter, three of its members—Marvin Moos, Vernon Forkner, and Loren Gothberg—were called from school to farm work and to active service.

As builders the Seniors are outstanding, for from their membership come the heads of most campus organizations. They have made contributions to Whitworth individually, and also through their lively spirit as a group. They stand, with other Whitworth graduates, as an example of service and loyalty to classes of the future.

## SENIORS



**RUTH BALDWIN**  
Major: Social Science  
Minor: Biology

Alpha Beta; Volunteer Fellowship; Christian Endeavor; Sefelo; treasurer and president, W.A.A.; treasurer of Pirettes; May Court, 1942; secretary of junior class; Women's Conference Committee. An all-around example of a real Whitworthian.



**CARL BLANFORD**  
Major: Social Science  
Minor: Christian Education and Speech

Debate; editor of *Whitworthian*; assistant editor of *Natsih*; president of sophomore class; president of Volunteer Fellowship; Alpha Chi; Christian Endeavor; Philadelphians; chorus. One of the moving forces behind the religious and the social life of the campus.

**JANE BOVEE**  
Major: Social Science  
Minor: Christian Education

Transfer from U. of W.; Sefelo; Christian Endeavor; Volunteer Fellowship; W.A.A.; historian and vice-president of Life Service Club. Top candidate for the most thorough and dependable worker on the campus.



**LYLE BRAMBLET**  
Major: Christian Education  
Minor: Psychology

Transfer from Multnomah School of the Bible; president of Philadelphians; Volunteer Fellowship; Christian Endeavor; president of Alpha Chi.

**AUDREY BRAULT**  
Major: Home Economics  
Minor: Chemistry

Transfer from Grays Harbor Junior College; vice-president of Alpha Beta; secretary and president of Sefelo; Christian Endeavor; Women's Conference committee. A shy, industrious little girl who manages to "go steady" with the A.S.W.C. president.





## SENIORS



RUTH BROWN

Major: Nursing Science  
Minor: Biology

Alpha Beta; secretary of Sefelo; vice-president of Christian Endeavor; Orchestra; Band; Whitworth Players; Volunteer Fellowship; Women's Conference Committee; vice-pres. of W.A.A. More nurses like Ruth, please.

CHARLOTTE HANSEN

Major: Home Economics  
Minor: English

Sefelo; Women's Conference committee; secretary of Alpha Beta; vice-president and historian of Life Service Club; Volunteer Fellowship; Christian Endeavor. Diligent, lively—gets around.



HELEN CARLSON

Major: Home Economics  
Minor: Chemistry

Modern Language Club; Sergeant-at-Arms of Alpha Beta; president of Pirettes; Women's Conference committee; treasurer of junior class. Quiet, alert—and withal a most pleasant manner.

VERNON FORKNER

Major: English  
Minor: French

Christian Endeavor; Alpha Chi; editor of 1942 *Natsihi*; editor of *Whitworthian*; assistant in English department; Orchestra; Phi Alpha. A possessor of innumerable talents—musical, journalistic talents—personality, and a brain besides.



## SENIORS



LOUISE HOLDER

*Treasurer*

Major: Business Administration  
and Secretarial Science  
Minor: Home Economics

Alpha Beta; secretary W.A.A.;  
Natsih staff; Women's Confer-  
ence committee; Sefelo. "V" girl,  
'43, and also "The" girl of the  
May Court.



FLORENCE JOHNSON

Major: History  
Minor: English

Volunteer Fellowship; vice-  
president of International Rela-  
tions Club; W.A.A.; Women's  
Conference committee; May  
Court, 1942; treasurer of Pi-  
rettes; associate editor of 1942  
Natsih. The smiling red-head  
behind the counter in Mr. Oakes'  
office to whom it's almost a de-  
light to hand over your money.

ROBERT JOHNSON

Major: Social Science  
Minor: Biology

Philadelphians; secretary of  
"W" Club; manager of Whit-  
worth chorus. Whitworth's most  
widely known student personal-  
ity.



MARVIN MOOS

Major: Economics  
Minor: German

Volunteer Fellowship; Alpha  
Chi; Modern Language club;  
Christian Endeavor; Phi Alpha.  
Brains—extensive but not obtru-  
sive.

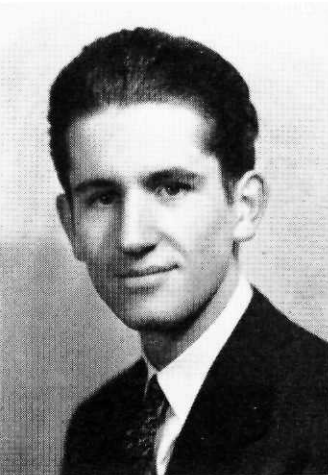


## SENIORS



**LENORE T. PETERSON**  
*Secretary*  
 Major: English  
 Minor: Business Administration  
 Chorus; Christian Endeavor;  
 Foreign Language club; vice-  
 president of Sefelo; Alpha Beta;  
 Art club, Sweet and petite.

**SAM D. SMITH**  
 Major: Music  
 Minor: Biology  
 President of A.S.W.C.; presi-  
 dent of junior class; manager and  
 member of male quartet; Chris-  
 tian Endeavor; Volunteer Fellow-  
 ship; assistant in Voice depart-  
 ment; Who's Who Among Stu-  
 dents; U. S. Naval Reserve. Ab-  
 solutely tops in the eyes of Whit-  
 worth—and that's a mighty big  
 statement.



**ROBERT RUBY**  
 Major: Biology  
 Minor: Chemistry  
 Chorus; business manager and  
 assistant editor of the *Whit-*  
*worthian*; Whitworth Players;  
 Modern Language club; Christian  
 Endeavor; secretary of Medici  
 Futuri; Alpha Chi; Art Club. His  
 heart belongs to Whitworth al-  
 though he's far away. Who's be-  
 ing interviewed now, Lieutenant  
 Ruby?

**ROBERT SAVAGE**  
 Major: Social Science  
 Minor: Education  
 Transfer from Gonzaga.

**PAUL WALTHER**  
 Major: Economics  
 Minor: Business Administration  
 Transfer from University of  
 Washington.

**MARGARET SKEELS**  
 Major: Home Economics  
 Minor: Chemistry  
 May Queen; vice-president  
 and president of Alpha Beta;  
 treasurer of Pirettes; treasurer of  
 Sefelo; Christian Endeavor; vice-  
 president of junior class; May  
 Court, 1942; general chairman of  
 Women's Conference; Art club;  
 Chorus; Who's Who Among Stu-  
 dents. Her election as May Queen  
 is proof of her unique place in  
 Whitworthia. A friend to all,  
 and all to a friend: Just ask Fork-  
 ner.



## JUNIOR CLASS

In spite of the Senior class, the gas shortage, and the draft board, the Junior class has turned in a complete record of a successful year of activities. Dr. and Mrs. Schlauch acted in the capacity of "Building Contractors," while Dick Schwab as class president deserves a great deal of credit for an excellent set of blue-prints for the class to follow. The financial management, which always constitutes a problem in any building program, was very capably handled by Treasurer Paul Merkel. Secretary Ellen Jones kept a fine record of construction operations while Virginia Hodge kept the laborers from becoming stale by leading us through an outstanding social program consisting of a Junior-Senior party at the Schlauch home in the fall, a "Winter-Fun" night in Manito Park followed by refreshments at the home of Eleanor Hook, a party early in the spring quarter in honor of the Seniors, climaxed by the Junior half of the fun on the Senior sneak.

We give our best wishes to the graduating Seniors, and we sincerely hope that this edition of the *Natsih* will bring them many happy memories of our share in the building of Whitworth.

*First row*—Lorraine Kitt, Virginia Hodge, Ruth Huntley, Florence Reynolds, Helen Ghormley, Dorothy Beggs, Dick Schwab. *Second row*—Tetsuo Saito, Ellen Jones, Esther Morton, Don Lantz, Eleanor Hook, David Thorndike, Louis McConnell. *Third row*—Dr. Schlauch, Everett Scott, Jack Starrett, Merle Wood, Paul Merkel, Paul Grams, Kenneth Monette.



## SOPHOMORE CLASS

A class of rare quality, a class of young builders rated as "excellent," a class of progressive characters who are helping to make and keep Whitworth what it is and what it stands for—we present to you the Sophomore class.

To the officers—President Don Steele, Vice-president Stan Gwinn, Treasurer Betty Ann Douglass, Secretary Selma Schmidt, and Social Chairman Kay Sanborn — goes the credit for the bringing of this large class group through a successful year in spite of difficulties and uncertainties encountered. To the adviser, Professor Stanley Newcomb, goes a cheer for his grand job of leadership.

The outstanding social event of the year was the winter fireside party in the Commons at which the Freshman class was honored.

From each member of this enthusiastic class goes a hearty wish to each senior for the best that the future might offer, and a more hearty thank you for the incentive to build and be worthy of the name, "Whitworthian."

*First row*—Bob Lee, Kay Sanborn, Edna Deckert, Bobbee Judd, Marion Ruby, Selma Schmidt, Isabelle McNeely, Joyce Warren, Gwen Lobdell, Seiichi Yamada, Bob McGrath. *Second row*—Al Brown, Ruth Stueckle, Mary Burkland, Marjorie Johnson, Betty Ann Douglass, Rosemary Johnson, Heidiko Horikawa, Carol Gardner, Marjorie Klein, Betty Arnquist, Mary Louise McHenry, Jim Collins, Bruce Finlayson, Mr. Newcomb. *Third row*—Melvin Hansen, Tom Jones, George Van Leuven, Amon Groves, Jim Peterson, Bob Edwards, Frank Burgess, Ray Roestel, Stan Gwinn, Don Steele, Bill Schlauch, Maurice Davis, Vince Gregg. *Fourth row*—Helen Baldwin, Elizabeth Whipple, Bernice Ghaslin, Edith Rydholm, Jeanne Bourland, Muriel Ausink, Louise Klebe, Virginia Boggs, Marcia Parker, Lillian Stokes, Estel McKay, Isabel Mise.



## FRESHMEN

The future will always demand a goodly supply of builders who know what materials to use and exactly how to use them. Just such a group is the 1942-43 Freshman class—the apprentice builders of Whitworth.

Professor Williams as class adviser and Bill Paeth as class president are to be complimented on their leadership. They have been assisted by Hubert Hull, vice-president; Della Specker, secretary; Marjorie Schauble, treasurer; and Russell Rosenkranz, social chairman. Two of the officers not being in school third quarter, Euell Fulkerson was elected vice-president and chairman of the social committee.

The "get-acquainted" week in the fall started a circle of social activity which lasted throughout the year. In accordance with the handbook on "The Conditioning of Freshmen," each member of the class was given the prescribed preparatory treatment and all passed the test with flying colors, emerging this spring as well-processed candidates for the job of carrying on Whitworth tradition. Some of the fellows haven't yet forgotten the Frosh-Soph fight at

*First row*—Georgianne Sharp, Jean Henderson, Marjorie Schauble, Hubert Hull, Della Specker, Bill Paeth, Jeanette Strong, Esther Brown. *Second row*—Mr. Williams, Joel Swanson, Jean Nance, Ruth Barnes, Jean Aldrich, Carol Wood, Lois Lyse, Betty Budd, Jacqueline Davis, Irene Hoople, Evelyn Deering. *Third row*—Lee Wallace, Leslie Yates, Harold Wimpy, John Webster, Glenn Sandstrom, Hobart Jenkins, Albert Hagman, Robert Shreve, Don Lancaster.



## CLASS

the fish hatchery—the odiferous slimy mud beneath the cool waters of a certain stream. How proud were the frosh when Bill Paeth practically single-handed captured the flag from the sophomore's tree! Various skating parties, picnics, and socials kept the mechanism of the social wheel from getting the least bit rusty.

But the emphasis was not all on social activities. The week of April 25, the freshmen sponsored the Whitworth drive for the World Student Service Fund.

We of the Freshman class accept the task of the future building of Whitworth which has been left us by the Senior class, and as they leave us they take with them our best wishes for a most successful future. We have enjoyed our first year at Whitworth—every moment of it—and we appreciate it. Most of all we have appreciated the Christian life on the campus—Christian students at a college with Christian faculty and administration. We have grown this year—spiritually as well as mentally, and—we'll be back—as soon as possible.

*First row*—Yvonne Green, Frances Hathaway, Edna May, Shirley Hammond, Virginia Hunt, Doris Beck, Virginia Huffman, Phyllis Robison. *Second row*—Don Henker, Ray Klefstadt, Helen Bovee, Helen Hartley, Lauretta Holder, Betty Hosea, Eugenia Ivanoff, Dorothy Munce, Helen Jo Jamieson, Jean Zutrau, Billie McKay, Geraldine Falk, Keith Medley, Bob Blodgett, Hubert Hull. *Third row*—Harry Ladd, Leslie Patten, Bob Paeth, Alvin Franz, Laurence Forland, Russell Rosenkranz, Don Heeter, Richard Yamamoto, Euell Fulkerson, Dale Williams.



**I**<sup>F</sup> I could paint with music or with art  
The glories that infuse each day I live,  
Could touch the soul-ties of my fellow man  
That bind him from the beauties life can give,  
And make his soul transcend ethereal space  
Till bathed in liquid beauties of the night  
He drop exhausted from those glories bright  
Into that couch of earth he'll evermore embrace—  
Yet still the fire within his soul burn on  
And still the throbbing throb within his head,  
His soul in tune with all the singing spheres  
Sounding an echo down the eternal years,  
(And having once such burning taste of life,  
No man this mortal ever can call dead)—  
Then though dull reason bind to earth my brain,  
The winged visions of my soul are not in vain.

—R. M. H.





BUILDERS ALL

**B**UILDING TO SERVE" truly describes Whitworth's religious activities. During the year some students have come to know Christ, the true foundation. Many have had their spiritual lives enriched and deepened, and are preparing for future service in the ministry, in the mission field, or as lay workers. Building for His service is the aim of these students and of the organizations in which they now serve.

## CHRISTIAN ACTIVITIES

Reviewing the past year's activities, we find that the highlight of spiritual guidance came the week of February 14-21, when Dr. Jesse H. Baird, president of San Francisco Theological Seminary, was on the campus for special meetings. Dr. Baird expounded the Scriptures with a clarity and force which gripped both students and faculty members.

### SPIRITUAL EMPHASIS WEEK

Under the inspirational leadership of Mrs. Clarence A. Black and Mrs. Susan Colman, the cornerstone of the spiritual life for the women of the campus was laid in the annual Women's Bible Conference, held at Camp Glen Echo, Spirit Lake, Idaho, October 16-18. Both Seattle leaders spoke on the theme, "Trust In Him Who Is Able." Approximately seventy-five women spent the week-end growing in the knowledge of the Lord Jesus and learning to know fellow students more intimately.

### WOMEN'S CONFERENCE

*Seated*—Miss Jenkins, Betty Ann Douglass, Isabelle McNeely, Marjorie Klein, Eleanor Hook, Audrey Brault. *Standing*—Jane Bovee, Margaret Skeels, Marion Ruby, Kay Sanborn, Helen Baldwin, Virginia Hodge.



## CHRISTIAN ACTIVITIES

**U**NDERSTANDING of the requirements of their future work and of the best possible preparation for it is sought by members of the Life Service Club, which includes the women of the campus who are looking forward to some type of full-time Christian service.

Their activities have included fellowship meetings and a dinner at the home of Dr. and Mrs. Warren. Officers of the group are Helen Ghormley, president; Jane Bovee, vice-president; Florence Reynolds, secretary-treasurer; Charlotte Hansen, historian; and Muriel Ausink, program chairman. Other members include Jean Aldrich, Jeanne Bourland, Jane Couch, Helen Hartley, Virginia Hodge, Louise Klebe, Hazel Mitchell, Florence Reynolds, and Jeanette Strong. Mrs. Warren is the adviser.

### LIFE SERVICE CLUB

*First row—Muriel Ausink, Mrs. Warren, Helen Ghormley, Jane Bovee. Second row—Virginia Hodge, Louise Klebe, Jeanne Bourland, Florence Reynolds, Jeanette Strong, Helen Hartley, Jean Aldrich, Charlotte Hansen.*



THE MEN who compose this organization find their common interest in preparation for the ministry of the Gospel. In addition to supplying small churches in and near Spokane, they have gathered several times at the home of their sponsor, Dr. J. W. Countermine, to share their experiences and offer suggestions for improving their preparation.

Members having definite charges are Carl Blandford, Coulee City Presbyterian; Lyle Bramblet, Astoria Presbyterian; Donald Lantz, Valleyford Evangelical; Quentin Leisher, Fourth Avenue Methodist; Lewis McConnell, Rathdrum Methodist; George Van Leuven, Sunset Presbyterian; Merle Wood, Post Falls Community; and Eugene Knautz. Other members are Frank Burgess, Euell Fulkerson, Bob Johnson, and Kenneth Monette.

Merle Wood is president of the Philadelphians; Kenneth Monette, vice-president; and George Van Leuven, secretary-treasurer.

## CHRISTIAN ACTIVITIES

### PHILADELPHIANS

First row—Merle Wood, George Van Leuven, Dr. Countermine, Kenneth Monette, T. tsuo Saito.  
Second row—Don Lantz, Euell Fulkerson, Frank Burgess, Lyle Bramblet, Carl Blandford, Louis McConnell.



## CHRISTIAN ACTIVITIES

PERHAPS the most active organization on the campus is the Christian Endeavor Society. Its Wednesday and Sunday evening meetings, at which appear visiting speakers and campus talent, have played a major part in the spiritual development of dormitory life, presenting the Lord Jesus Christ and challenging Whitworth students to simple and sincere Christian living.

This year's group has been under the capable leadership of Frank Burgess, president; Loren Gothberg, vice-president; Hubert Hull, treasurer; and Betty Budd, secretary. Committee chairmen were Helen Bovee, look-out; Carol Gardner, music; Virginia Hodge, prayer meeting; Lorraine Kitt, social; and Bob McGrath, missionary. During the first quarter Roy Peringer was president and Esther Morton missionary chairman. Miss Jenkins is the adviser.

Whitworth students living on or near the campus compose the membership of this organization.

### CHRISTIAN ENDEAVOR

*First row*—Laurence Forland, Keith Medley, Seiichi Yamada, George Rodkey, Carl Blanford, Euell Fulkerson, Bob Paeth, Bob Blodgett, Don Heeter. *Second row*—David Thorndike, Marvin Moos, Maurice Davis, Lee Wallace, Stan Gwinn, Jim Collins, Alvin Franz, Dick Schwab, Bruce Finlayson, Hubert Hull, Helen Baldwin. *Third row*—Marion Ruby, Kay Sanborn, Isabelle McNeely, Jeanne Bourland, Eugenia Ivanoff, Dorothy Munce, Helen Jo Jamieson, Jean Zutrau, Marjorie Schauble, Billie McKay, Geraldine Falk, Gwen Lobdell, Esther Brown, Jean Henderson, Muriel Ausink. *Fourth row*—Loren Gothberg, Bob McGrath, Sam Smith, Mary Burkland, Phyllis Robison, Helen Bovee, Elizabeth Whipple, Helen Ghormley, Merle Wood, Frank Burgess, Dale Williams, Everett Scott, Florence Reynolds, Marjorie Johnson, Betty Ann Douglass, Virginia Huffman, Joyce Warren, Ruth Barnes, Jeanette Strong, Charlotte Hansen, Jean Aldrich, Vernon Forkner, Audrey Brault, Virginia Boggs, Russell Rosenkranz, Mr. Williams. *Fifth row*—Dorothy Beggs, Edith Rydholm, Ruth Stueckle, Selma Schmidt, Heidiko Horikawa, Jean Nance, Jane Bovee, Helen Hartley, Louise Klebe, Marjorie Klein, Ellen Jones, Carol Gardner, Miss Jenkins, Virginia Hodge, Lorraine Kitt, Marcia Parker, Lois Lyse, Edna Deckert, Betty Budd, Irene Hoople, Della Specker, Ruth Huntley.



## CHRISTIAN ACTIVITIES

UPPERMOST in the minds of members of the Volunteer Fellowship is the desire to serve. The group has sponsored a weekly all-college prayer meeting, assisted in plans for Spiritual Emphasis Week, sent out gospel teams, and participated in two Inter-Varsity Christian Fellowship conferences at Washington State College. Upon this group falls the responsibility for co-ordinating the religious activities of the students.

The informal Friday-night prayer and Bible study group has been of special blessing and joy to members of this organization and to other interested students. Invited by Mr. and Mrs. Carlson to meet in their home, every member of the Volunteer Fellowship has taken an active part in making the meetings successful. Students and invited leaders have conducted the various discussions.

Officers for the year are Carl Blanford, president; Kay Sanborn, vice-president; Virginia Hodge, secretary; and Bob Paeth, treasurer. Mr. Carlson is the adviser.

### VOLUNTEER FELLOWSHIP

*First row*—Carl Blanford, Everett Scott, Dick Schwab, Lyle Bramblet, Mr. Carlson, Marion Ruby. *Second row*—Jean Aldrich, Muriel Ausink, Louise Klebe, Helen Ghormley, Jane Bovee, Florence Johnson, Charlotte Hansen, Kay Sanborn, George Van Leuven. *Third row*—Alvin Franz, Euell Fulkerson, Loren Gothberg, Frank Burgess, Merle Wood, Marjorie Klein, Florence Reynolds, Marjorie Johnson, Ruth Huntley, Jeanne Bourland, Phyllis Robison, Virginia Hodge.





*Seated*—Lorraine Kitt, Virginia Hodge, Bruce Finlayson, Dr. Kennedy, Eleanor Hook, Mr. Diz-  
 mang, Virginia Huffman, Ruth Huntley, Florence Reynolds. *Standing*—Don Lantz, Euell Fulk-  
 erson, Jean Zutrau, Helen Jo Jamieson, Merle Wood, Jacqueline Davis, Gwen Lobdell, Dick Schwab,  
 Frances Hathaway, Helen Hartley, Joyce Warren, Carl Blanford, Ellen Jones.  
 Faculty Advisers.....Dr. Kennedy and Professor Dizmang

**WHITWORTHIAN** *Seated*—Frances Hathaway, George Van Leuven, Dr. Kennedy, Vernon  
 Forkner, Marjorie Klein, Lorraine Kitt, Merle Wood. *Standing*—Olive  
 Lewis, Euell Fulkerson, Bobbee Judd, Lenore T. Peterson.



# Whitworthian

VOL. 34

Spokane, Washington, Wednesday, November 25, 1942

NUMBER 2

## BUILDER PRESIDENT'S GOAL IN SIGHT

### 'Building to Serve' Will Be Theme of 1942-1943 Natsihi

Editor Eleanor Hook Announces Appointment of Yearbook Staff Members

Regarding the completion in 1942-1943 of the Jay P. Graves auditorium-gymnasium as a happy symbol of the spirit of a college which seeks in all its departments to build men and women for consecrated service in their chosen fields, this year's staff of the *Natsihi* has chosen as yearbook theme, "Building to Serve."

Editor Eleanor Hook, formerly editor of *Pilot*, yearbook of Lindbergh high school, Valleyford, and freshman staff member of the *Whitworthian*, has announced as her associate, Marjorie Klein, '45.

Other staff appointments announced by the editor are: Classes, Lorraine Kitt; Organizations, Virginia Hodge; Sports, Vince Gregg and Florence Reynolds; Art, Virginia Huffman; and Photography, Ellen Jones.

Dr. Kennedy is faculty editorial adviser and Professor Dizmang, the *Natsihi's* first faculty business adviser.

The student business manager has not yet been selected, nor has the music editor.

The *Natsihi* is published annually under the supervision of the junior class, from whose ranks the editor is chosen by the class executive council acting in conjunction with the faculty editorial adviser.

### PRE-MEDS NOW ADMITTED TO HOSPITAL AUTOPSIES

Members of the Pre-Med club are now taking turns in attending operations and autopsies at St. Luke's and the Deaconess hospitals. Those in charge of arrangements are: President Loren Gothberg, Gerry Dean and Ruth Huntley.

Members are also working on a Pre-Med library to be located in the Biology lab. Books will be donated by Pre-Med students and will be for the exclusive use of the club members.

### 'Professor Huntley Accounts for Axis Bias of Gremlins

Alas, the allies have another treacherous enemy to battle. Not only do we have the axis on our hands, but some very formidable, pixy-like creatures, called "Gremlins," the R.A.F. points out.

According to the R.A.F., practically all the Allies' aerial trouble can be attributed to the *Gremlins*. This includes iced wings, jammed machine guns, water in the fuel line, poor vision, and a host of other troubles which confront the air fighters.

Now, the question is: What causes these otherwise normal little fellows to be so hostile to our side of the fight? This question has given rise to a considerable amount of investigation in the biology department, and several of the students have been studying the physiology and anatomy of the Gremlins in an attempt to discover the fault. What is it that makes the Gremlins so decidedly anti-ally?

Jack Starrett has been carefully studying Gremlin embryos, but finds nothing out of the ordinary in this phase of the development of the Gremlin. Ruth Huntley, however, has arrived at a very logical conclusion which accounts for the well-marked Gremlin nastiness. "Professor" Huntley has deduced, and also illustrated in a diagram which is on the biology laboratory blackboard, that the Axis doctors have removed the "conscience bumps" from the heads of the Gremlins.

Continued on Page 3



Monday, November 23, was more than just a birthday for Dr. Frank F. Warren this year. It was also the occasion for thankfulness that financial requirements for fulfillment of plans for the Jay P. Graves auditorium-gymnasium had been fully met, and that now the road to completion by the end of 1942 is clear.

### HUNTER PROVIDES FOR FEAST IN MEN'S DORM

The entrance door to Professor Stanley Newcomb's apartment opened slowly. A man stood facing the reception room of Whitworth Hall. He stepped out, paused dramatically. Three little words fell from his lips.

An ominous rumble was heard throughout the building. Almost simultaneously, twenty doors opened; students poured by two's into the corridor.

Continued on Page 4

### Whitworthian Staff Will Sponsor College Rental Library Bookshelf

When Whitworth students return to college after the Christmas recess, they will find a new bookshelf in the library. Recognizing the importance of keeping in touch with the thought of the world of today, the *Whitworthian* has volunteered to purchase twenty-five books as nucleus of a rental library of current fiction and non-fiction. Books will be selected from titles suggested by students and faculty members. All suggested titles should be deposited in the box provided for their reception at the desk in the library, on or before December 1. No unsigned suggestions will be considered.

The *Whitworthian* proposes Russell Blankenship's *And There Were Men*, that "brilliant new book" in which the distinguished professor of American Literature at the University of Washington is said to offer "a true and vivid portrait of the most colorful, mysterious, and romantic corner of America—the Pacific Northwest."

### Basketball Season Will Open on New Gymnasium Floor

Jay P. Graves Hall to Be Scene of Hoopsters' Battle With Gonzaga

When Whitworth's hoopsters open this year's Homecoming program, Friday, December 4, they will join battle with the Gonzaga quint on the floor of the new gymnasium. Meeting an opposing team for the first time in Jay P. Graves hall, the Pirates in their crimson suits will be spurred to victory not only by the yells of their student supporters, but by the music of Byquist's recently-organized pep band.

Following the game, all will gather around to watch the kindling of the big bonfire built by the freshman class. It is rumored that although there is no official recognition of rivalry, the freshmen may find it necessary to protect their prize pyre against certain upper classmen awfully set on prematurely igniting the heap.

The formal banquet will be held Saturday evening.

Still busy sending letters of notification to graduates is Mary Elaine Dugan, chairman of the Alumni committee, under whose surveillance are Ruth Barnes, Bob Blodgett, Jackie Davis, Marge Klein, Bob Lee and Dorothy Munce.

Virginia Hodge is chairman of the Program committee, her associates being Vernon Forkner, Queen Leisher, Florence Reynolds and Bill Schlauch.

In charge of decorations is Dorothy Beggs and her committee members, Virginia Huffman, Eugenia Ivanhoff, Wilfred Landres, Bob Paeth, Marcia Parker and Isabelle McNeely.

### PIRETTES FACED WITH PRIORITY ON SWEATERS

Because of war priorities Whitworth's new Pirette members will either have to go without the traditional crimson and gray sweaters or will have to persuade senior members to sell theirs.

Also on the Pirette schedule and now under way is the rewriting of their Constitution.



## PIRETTES

**D**ISTINGUISHED by their gray sweaters, which they wear each Tuesday, and by impressive records of scholastic and social leadership are the Pirettes, members of Whitworth's honorary society for women.

The formal installation of officers and initiation of new members opened the year's activities. Helen Carlson took over the duties of captain; Helen Ghormley, those of first mate; Ruth Baldwin, those of second mate; and Margaret Skeels, those of purser. At the end of the first quarter, Helen Ghormley became captain. Betty Ann Douglass, Virginia Hodge, Marjorie Klein, and Selma Schmidt were welcomed as new members by these officers and by Barbara Miller, Florence Johnson, and Eleanor Heck, former members of the organization. At the beginning of the second quarter, carrying out their aims of service and friendliness, the Pirettes entertained at tea in honor of the new co-eds. Other activities in which they engage are the sponsoring of a chapel program and the breakfast at the close of the year.

Miss Jenkins is the adviser of this group.

Eleanor Hook, Florence Johnson, Barbara Miller, Marjorie Klein, Ruth Baldwin, Miss Jenkins, Helen Ghormley, Margaret Skeels, Betty Ann Douglass, Virginia Hodge, Selma Schmidt.



*I.Q.* is an implied pre-requisite for student membership in Phi Alpha, as each member must have maintained the high grade-point average of 2.3 during his undergraduate years. Another pre-requisite for student members is the completion of at least two years of work on the Whitworth campus. Active student members are those who have completed the work of the senior year.

1942-1943 faculty representatives are Miss Boppell, Mrs. Carrel, and Professor Bachimont. Miss Jenkins and Dr. Gustafson are Whitworth graduates who have met all the requirements for student membership.

*Seated—Eleanor Hook, Dr. Gustafson. Standing—Vernon Forkner, Loren Gothberg, Dick Schwab.*



## MEDICI FUTURI

**N**EW this year, the pre-medical students' library, inaugurated by the Medici Futuri, and housed in the biology laboratory, has been of real value to the members of the organization and to others interested in medical science. The "pre-meds" have also taken several educational tours to the Spokane hospitals.

One meeting of interest to the club members included a talk by Dwight Gustafson about the work of the army medical corps. The group also shared with the student body an educational moving picture demonstrating first aid procedure.

Loren Gothberg has served as president during this year. The position of secretary was filled first quarter by Tami Nozaki, and the rest of the year by Virginia Boggs. Other active members are Gerald Dean, Ruth Huntley, Marjorie Johnson, Tami Nozaki, and George Rodkey. Associate members are Keith Medley, Dorothy Munce, Dale Williams, and Richard Yamamoto.

*Seated*—Marjorie Johnson, Virginia Boggs, Dorothy Munce, Bobbee Judd, Ruth Huntley. *Standing*—Dr. Gustafson, Richard Yamamoto, Keith Medley, Dale Williams, Bob McGrath, Jack Starrett, George Rodkey, Sam Smith, Loren Gothberg.



## INTERNATIONAL RELATIONS CLUB

**T**IMELINESS is the essence of the study and activities of the International Relations Club. However, both new and old ideas are explored and discussed to develop its purpose: To enlighten public opinion, and to promote good will concerning matters of international interest.

The highlight of the season for this active group was the sponsoring of the "Chinese Art Exhibit" featuring the collection of art objects belonging to Professor and Mrs. Chandler, returned missionaries.

Opinions and ideas from other similar college groups were brought back by the four members who attended the Northwest Conference of International Relations Clubs held at the University of Montana in Missoula, April 16 and 17. Student delegates were Edna Deckert, Isabelle McNeely, and Kenneth Monette. Miss Evans represented the faculty.

Kenneth Monette is 1942-1943 president; Florence Johnson, vice-president; Isabelle McNeely, secretary-treasurer; and Dr. Schlauch, adviser. George Van Leuven has served as vice-president during the third quarter.

*First row*—Kenneth Monette, Dr. Hardwick, Mr. Dizmang, Everett Scott, George Van Leuven, Dr. Schlauch. *Second row*—Isabelle McNeely, Edna Deckert, Lillian Stokes, Mrs. Carrell, Miss Evans, Ruth Myers, Miss Boppell, Florence Johnson, Estel McKay, Marion Ruby.



## ALPHA BETA

**G**IRLS who have taken or are taking home economics courses are invited to become members of Alpha Beta. The name is derived from the Greek words *Aristos Bios*, meaning "best things in life."

The definite purpose of Alpha Beta is to give the members an opportunity to develop greater interest in the scientific and aesthetic standards of living in the home.

Under the capable leadership of its 1942-43 president, Margaret Skeels, Alpha Beta has had a full year of constructive activities. The tea for freshman girls entitled to membership was followed by formal installation of officers and initiation of new members. During the Christmas season, the girls prepared a basket for a needy family. Second-quarter initiation took place in February. The annual Mothers' Tea, held early in March, brought many mothers and faculty wives to the campus as guests of the members. Alpha Beta also sponsored three all-college skating parties. The year's activities were brought to an end with the spring banquet held in April.

Miss Boppell is adviser of the club and the officers are: president, Margaret Skeels; vice-president, Audrey Brault; secretary, Estel McKay; treasurer, Mary Louise McHenry; and sergeant-at-arms, Marian Ruby.

*First row—Margaret Skeels, Esther Brown, Dorothy Beggs, Jean Henderson, Dora Tracy, Florence Reynolds, Ruth Baldwin, Estel McKay. Second row—Marion Ruby, Miss Boppell, Louise Holder, Marjorie Schauble, Jacqueline Davis, Mary Louise McHenry, Ruth Barnes, Della Specker, Mary Elaine Dugan, Charlotte Hansen, Isabelle McNeely, Audrey Brault, Eleanor Hook.*



## WHITWORTH PLAYERS

*Family Portrait*, a play giving a simple, eloquent, and reverent picture of the family of Jesus during the last three years of Christ's life, was presented by the speech department on April 21 in the Jay P. Graves auditorium. The presentation of this play was Whitworth's offering to the Holy Week program of the Spokane churches.

Taking for its theme the Master's words, "A prophet is not without honor but in his own country, and among his own kin, and in his own house," *Family Portrait* preaches the spirit of humility and tolerance. The play closes with the glorious news on Easter morning that Jesus has risen from the dead.

The cast included Eugenia Ivanoff in the role of Mary, mother of Jesus; Sam Smith, Bruce Finlayson, Alvin Franz, and Keith Medley as Joseph, Simon, James, and Judah, the four brothers of Jesus; Mary Elaine Dugan as Mary Cleophas, an aunt; and Lois Lyse as Mary of Magdala. Others in the cast were Jean Aldrich, Helen Baldwin, Carl Blanford, Frank Burgess, Marjorie Johnson, Isabelle McNeely, Esther Morton, Marcia Parker, Joel Swanson, and Dale Williams.

Leads in *Ile, O'Neill* one-act play, which was the March production of the Whitworth Players at North Central, were taken by Eugenia Ivanoff and Carl Blanford.

In the Commencement presentation of Shakespeare's *Merchant of Venice*, Professor Newcomb has by request the role of Shylock.

First row—Frank Burgess, Alvin Franz, Bruce Finlayson, Sam Smith. Second row—Mary Elaine Dugan, Esther Morton, Eugenia Ivanoff. Third row—Carl Blanford, Merle Wood, Marcia Parker, Isabelle McNeely, Marjorie Johnson, Helen Baldwin, Helen Ghormley, Jean Aldrich, Lois Lyse, Bob Edwards, Euell Fulkerson.



## MUSIC

### COLLEGE CHORUS



**S**ERVING BY SINGING" might well be the motto of the Whitworth chorus, now for many years one of the outstanding musical groups of the Inland Empire. Almost fifty voices make up this year's chorus, under the inspiring leadership of Mrs. Hopkins. During the Christmas season the "Messiah" was sung at the First Covenant and the First Presbyterian churches of Spokane. The chorus also sang at one Dr. E. Stanley Jones service. Merlyn Philo and Isabel Mise have served as accompanists.

In March the chorus presented the Gilbert-Sullivan opera, "Trial by Jury," a student production directed by Jay Tomlinson. Barbara Miller was in charge of the dramatic scenes. At the Geiger Field presentation, the principals were Betty Arnquist, Bob Edwards, and George Rodkey; at North Central, Gwen Lobdell, Bob McGrath, and George Rodkey.

The Easter season brought many opportunities and responsibilities to the chorus.

*First row—Esther Morton, Ellen Jones, Gwen Lobdell, Lauretta Holder. Second row—Marjorie Schauble, Muriel Ausink, Marjorie Klein, Jeanette Strong, Helen Ghormley, Estel McKay. Third row—George Rodkey, Ray Klefstadt, Maurice Davis, Louis Messer, Bob Edwards, Bob McGrath.*



## MUSIC

### COLLEGE CHORUS

The high point of the year's activity was the presentation of Stainer's "Crucifixion" at the Millwood Presbyterian and Vera Community churches. It was also given on Good Friday night at the Masonic temple, and selections were presented on the chapel hour.

The Whitworth Chorus belongs to the Federated Music clubs, which this year has sponsored weekly radio programs over KFPY. The chorus has been represented on this program by Betty Arnquist, soprano; Bob Johnson, baritone; Lewis Messer, tenor; and Sam Smith, baritone. Isabel Mise has represented the piano department.

The chorus sponsored the appearance in Spokane last fall of Miss Miriam Berg, noted mezzo-soprano who sang with the Cleveland Symphony Orchestra at the recent MacArthur celebration. Proceeds were used toward the purchase of new choir robes.



*First row*—Mary Burkland, Louise Klebe, Mrs. Hopkins, Carol Gardner, Evelyn Deering. *Second row*—Isabel Mise, Barbara Miller, Jean Nance, Edith Rydholm, Helen Baldwin, Kay Sanborn. *Third row*—Geraldine Falk, Phyllis Robison, Betty Ann Douglass, Helen Hartley, Virginia Hunt, Jean Aldrich, Joyce Warren. *Fourth row*—Everett Scott, Russell Rosenkranz, Leslie Yates, Joel Swanson, Alvin Franz, Don Heeter, Sam Smith, Kenneth Monette, Carl Blanford.





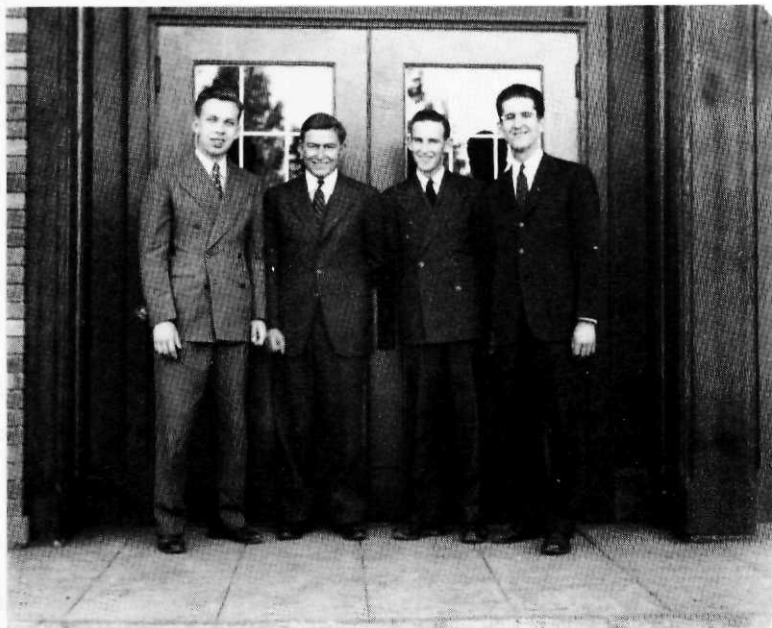
## MUSIC



**ORGANISTS** The Organon has proved a major addition to the music department. Of special interest was its use during Spiritual Emphasis Week and for the Sunday morning services throughout the year, with Helen Hartley, Virginia Huffman, and Joyce Warren at the keyboard. Merlyn Philo and Isabel Mise are Whitworthians who hold positions as organists in the city.

**EXTENDING** their activities to the air and throughout the state, the members of the mixed quartet have made many friends for the college this year. **MIXED QUARTET** A quartet of sophomores—Gwen Lobdell, Tacoma; Betty Ann Douglass, Ephrata; Robert McGrath, Seattle; and George Rodkey, Post Falls, Idaho—this group has carried the musical responsibility for the popular "Whitworth Chapel Hour."





**MALE QUARTET** Time cut for a song—and the male quartet is always ready. This year's members are Loren Gothberg, Bob McGrath, George Rodkey, and Sam Smith.

The main appearance of the "Star Dusters," pictured tuneful trio, was at the Homecoming Banquet. They have also sung at Women's Conference, on Church programs, and during Religious Emphasis Week.

The freshman trio, composed of Geraldine Falk, Virginia Huffman, and Marjorie Schauble, and their accompanist, Jean Zutrau, pleased audiences at the Colonial Party and at the All-Awards Banquet.

A new star on the horizon is the trio composed of Betty Arnquist, Evelyn Deering, and Barbara Disney, accompanied by Isabel Mise, who have sung at the Y.M.C.A. social hours for service men, held Saturday evenings and Sunday afternoons.



MAY



Standing—Princesses Helen Carlson, Mary Elaine Dugan, Audrey Brault, Louise Holder, Charlotte Hansen, Betty Arnquist, and Eleanor Hook. Seated—Queen Margaret Skeels.

DAY



Queen Margaret I.

## SEFELO

**V**OICING consistently the principles of Service, Fellowship, and Loyalty, the sixty members of the 1942-43 Sefelo opened a year of activity and fun with Stooze Week, October 27-29. The highlight of the first quarter was the unintentional blackout during Women's Open Dorm, November 14. On December 17, the beauty of the Christmas season was brought vividly to the mind of each girl by the inspiring Christmas Candle Light Service. A week full of good deeds, ending with a Valentine party, marked Heart Sister Week, the main event of the second quarter. Spring brought the annual Sefelo Mothers' Tea, and as the year ended, every girl felt the rich blessing that had been hers through the fellowship of Sefelo.

Sefelo's members are the residents of the two women's dormitories. Officers for the year have been Audrey Brault, president; Marian Ruby, vice-president; Eugenia Ivanoff, secretary-treasurer; Helen Ghormley, social chairman; Hidiko Horikawa, house committee chairman.

*First row*—Dorothy Beggs, Betty Budd, Muriel Ausink, Ellen Jones, Eleanor Hook, Billie McKay, Virginia Hodge, Lorraine Kitt. *Second row*—Mary Elaine Dugan, Ruth Barnes, Ruth Huntley, Kay Sanborn, Jean Nance, Mary Burkland, Marion Ruby, Selma Schmidt, Ruth Stueckle, Isabelle McNeely, Jeanette Strong, Virginia Huffman, Jean Aldrich. *Third row*—Esther Brown, Mrs. Carrell, June Jensen, Jean Henderson, Edna Deckert, Marjorie Johnson, Carol Wood, Betty Ann Douglass, Jean Zutrau, Eugenia Ivanoff, Heidiko Horikawa, Jane Bovee, Carol Gardner, Marjorie Klein, Charlotte Hansen, Dorothy Munce, Helen Hartley, Geraldine Falk, Marjorie Schauble, Miss Jenkins. *Fourth row*—Helen Ghormley, Florence Reynolds, Audrey Brault, Addie Sharp, Helen Baldwin, Lois Lyse, Elizabeth Whipple, Jeanne Bourland, Edith Rydholm, Louise Klebe, Virginia Boggs, Helen Bovee, Helen Jo Jamieson, Marcia Parker, Irene Hoople, Ruth Meyers, Phyllis Robison, Ruth Baldwin, Louise Holder.



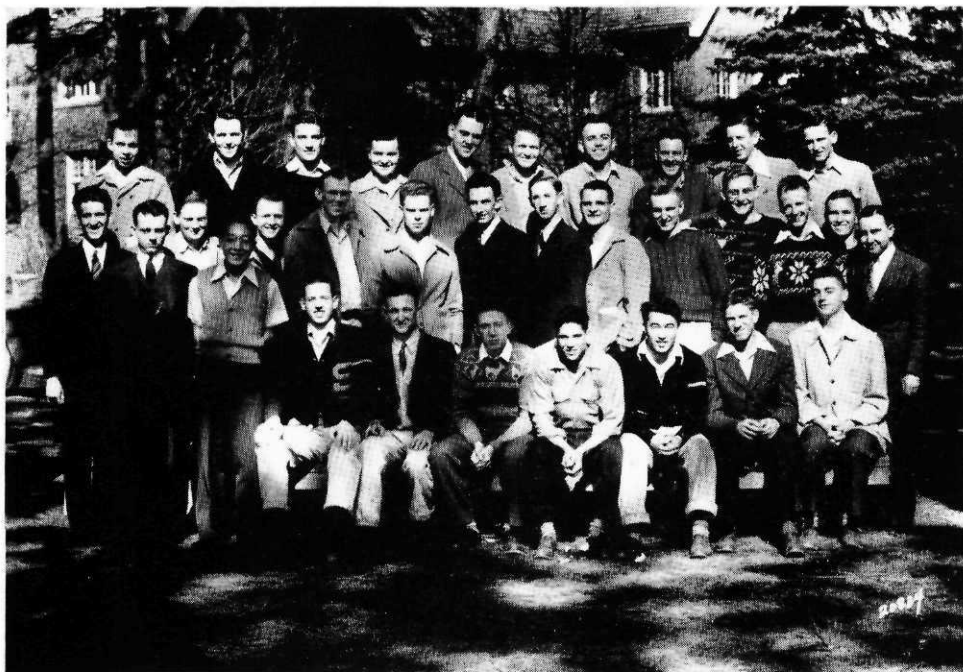
**E**PICURES one and all—  
Residents of Whitworth Hall!

**ALPHA  
CHI**

Alpha Chi's activities this busy year have included formal initiation, when more than a score of "worms" were admitted into full membership after a "charming" reception held for them in the privacy of a subterranean chamber; the Christmas party, at which well-liked Proctor Stanley S. Newcomb played "Santa" to all the members; the second birthday dinner of the year; the Christian Endeavor meeting at which Naval Hero Irvin Lissy spoke; and last, but not least, Open Dorm, that highly successful flower of the strenuous activity of the year.

Officers for the first two quarters were as follows: president, Don Steele; vice-president, Paul Merkel; secretary, Frank Burgess; treasurer, Bob Lee. Third-quarter officers, elected in March, are President Stan Gwinn, Vice-president Keith Medley, Secretary Paul Merkel, and Treasurer Euell Fulkerson.

*Seated*—Maurice Davis, Bill Paeth, Stan Gwinn, Jim Collins, Seiichi Yamada, Marvin Moos, Dale Williams. *Second row*—Sam Smith, Mr. Williams, Bruce Finlayson, Tetsuo Saito, Laurence Forland, Russell Rosenkranz, Hubert Hull, Merle Wood, Dick Schwab, Frank Burgess, Don Steele, Jack Starrett, Keith Medley, Lee Wallace, Mr. Newcomb. *Third row*—Loren Gothberg, Don Heeter, Paul Merkel, Euell Fulkerson, Vernon Forkner, Bob Paeth, Alvin Franz, Bob Blodgett, Robert Shreve, Bob McGrath.



**E**ASTWARD Mt. Spokane, eternal  
Rises changeless from the plain,  
Standing guard above the valley  
When our fathers westward came.

—R. H.



GAME'S ON!



## BASKETBALL



### DON STEELE

As well as being elected to the honorary captainship of the Pirate squad for the 1942-43 season, Don Steele, Naval Reserve V-1, has the honor of being the only player who has ever won the Pirette Inspirational Award for two consecutive years. Presentations of the honors were made by Coach Munn and Helen Ghormley at the All-Award Banquet. For his skill in ball playing, his sportsmanlike conduct on the floor, and his inspirational leadership Don was chosen by his teammates as being worthy of both these honors.

### COACH MUNN

Truly one of the busiest men on the campus during this year has been our Dean of Men, Dr. Munn. Besides helping the president at the beginning of the year he has been in charge of the Civil Pilot Training Service at Calkins Field. As if that were not enough, he has carried the Pirates through one of their most successful seasons. The members of the team want Coach Munn to know that they really appreciate the work and time that he spent with them. "Hats off" to Dean Munn because he has had a real task to perform and he has done it with a smile.



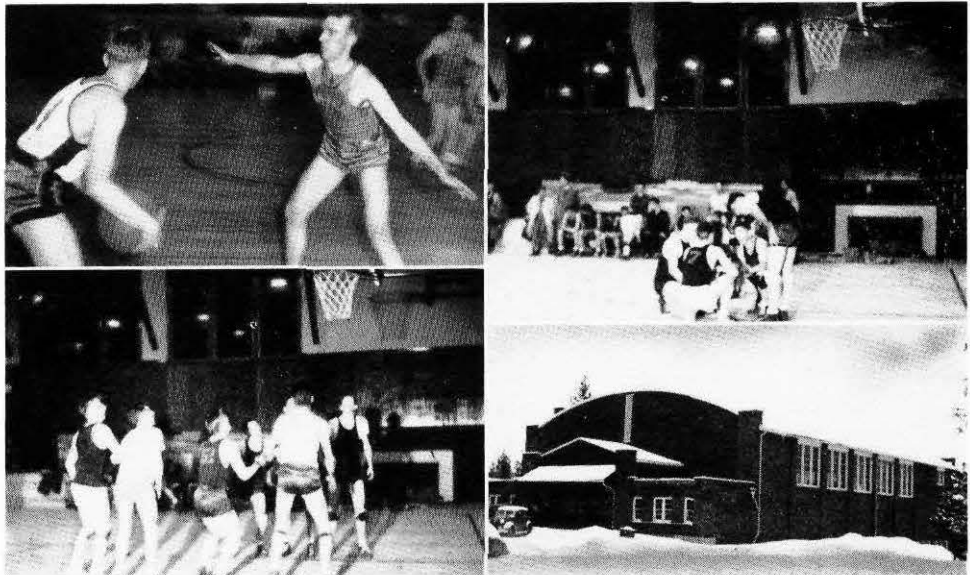
# BASKETBALL

Playing a heavy twenty-two game schedule, the Whitworth Pirates showed that they were a fighting team all the way through the '42-'43 basketball season.

Though every game was so packed with thrills and chills that the crowd was continually on edge, hard luck hit the boys quite often. Many of the games were lost by one or two-point margins. Whether the going was rough or smooth, however, the boys displayed excellent team work and showed a grand spirit of fire and enthusiasm throughout the entire season.

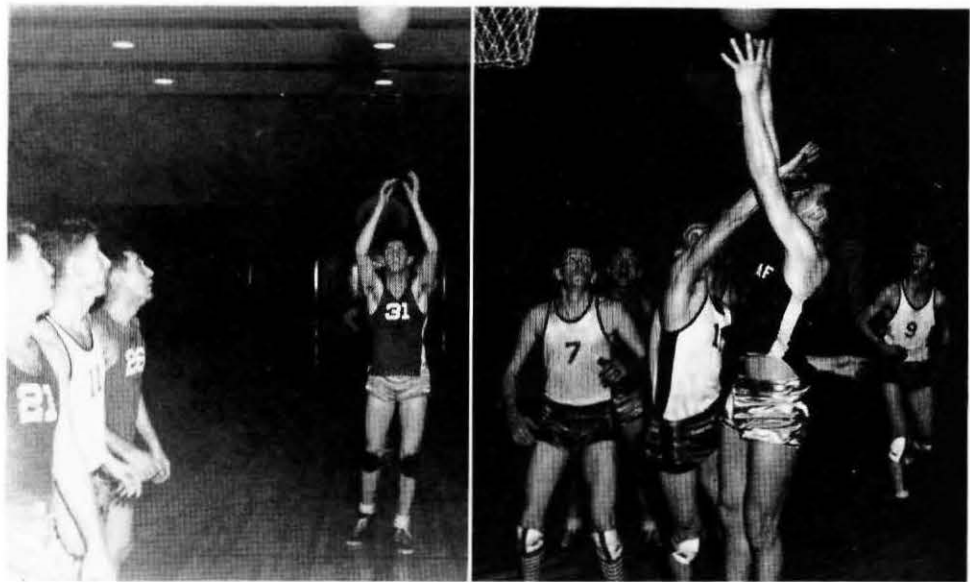
## GAME SCORES

	Whitworth	Opponents
Gonzaga .....	41	42
Lewiston .....	46	41
Lewiston .....	32	47
Cheney J. V. ....	45	32
Ephrata .....	47	34
Yakima J. C. ....	37	56
Navy .....	47	33
Gonzaga .....	38	41



# SEASON

Cheney J. V.....	31	47
Lewiston .....	43	53
Lewiston .....	49	51
Gonzaga .....	45	53
Headquarters Squad., Ft. Wrt.	42	46
2nd A. F. Bombers.....	48	60
Cheney J. V.....	39	53
Army .....	32	42
Gonzaga .....	69	89
Geiger Field .....	48	47
Cheney J. V.....	37	43
2nd A. F. Bombers.....	27	52
Geiger Field .....	58	62
Navy (Coeur d'Alene).....	45	49
	946	1072



Bill was one of the boys who played part of the season under the handicap of a heavy cast but in spite of a broken arm, he had fire and drive that was an inspiration to all his team-mates.

ROSENKRANZ: Tall and rangy, Rosie improved steadily as the season progressed and the last part of the season found him as starting center for the Pirates.

EDWARDS: Full of pep and "jinegar," Bobby was a wildcat on defense and an offensive whirlwind.



LEE: Long shot artist for the team, Bobby was relaxed and cool no matter how tough the game became.

BROWN: Consistent and conscientious, Al was an excellent passer and worked well in setting up plays.

BLODGETT: Fast as greased lightning, Fuzz was high scorer for the Pirate club and was listed among the top scorers in the Pacific Northwest for the 1942-43 season.

STEELE: Don played the first part of the season under the handicap of a broken arm, but even a cast did not impede the speed of Whifworth's eagey, blonde le-I, guard.

BRINCKEN: Illness took Brink out for part of the season, but he returned to work as pivot man for the Pirate squad.

MERKEL: Rough and rugged, Merk worked well under the backboard and spelled trouble for many taller opponents.

ROESTEL: Tough and scrappy, Ray liked it when the game was rough; opponents found him a hard customer to h.tndl.



## JUNIOR VARSITY

The Whitworth Junior Varsity basketball squad rounded off a heavy 1942-1943 season's schedule with seven wins and nine losses, coming out fourth in the Y.M.C.A. Church A league.

The team was coached by Everett Scott. "Scotty," as he is known to all his friends, did a splendid job in handling this year's J. V. season.

The squad appropriated the Junior College uniforms and took the name of Wolverines. Their colors were blue and silver.

Seasonal total high points were:

<i>Players</i>	<i>Points</i>	<i>Games played</i>
Starrett .....	106	11
Schwab .....	82	15
Collins .....	68	11
Gwinn .....	50	11
Davis .....	47	13
Smith .....	45	11

Co-captains for the season were Dicl. Schwab and Sam Smith.

Seiichi Yamada, Marvin Moos, Sam Smith, Jack Starrett, Everett Scott, Dick Schwab, Stan Gwinn, Jim Collins.



## TENNIS

This year's tennis team is coached by the Rev. Mark Koehler, a former Whitworth student who while in school here was one of the leading players of the game. With Mr. Koehler back on the campus as coach as well as member of the faculty, the outlook for the season is good.

On the schedule as the *Natsih* goes to press are matches with Gonzaga University, with Fort Wright, and with Geiger Field.

In the first meet, held April 16, Whitworth defeated Gonzaga six out of the seven matches. On April 27 Fort Wright defeated the home team four matches to one.

Those playing on the team are Leslie Patten, No. 1; Don Lancaster, No. 2; Dick Byquist, No. 3; Stan Gwinn, No. 4; and Paul Merkel, No. 5.

Last year something new was started when Dr. Warren decided to give a cup to the Number One man in school. This year there are thirteen competitors for the award. It was won last year by Wesley Scott.

Those competing are Carl Blanford, Dick Byquist, Alvin Franz, Stan Gwinn, Don Heeter, Don Lancaster, Louis McConnell, Paul Merkel, Leslie Patten, Everett Scott, Lee Wallace, Merle Wood, and Seiichi Yamada.

*Left to right—Don Heeter, Stan Gwinn, Carl Blanford, Louis McConnell, Paul Merkel, Don Lancaster, Alvin Franz, Leslie Patten, Mr. Koehler.*



## 'W' CLUB

Winners of major letters in football or basketball build for Whitworth in the "W" Club. Eight of this year's members are already in the service of their country. These with the armed forces or deferred for work on farms are Glen Brincken, Hubert Hull, Don McInturff, Roy Peringer, Rolla Riley, Ray Roestel, and Russell Rosenkranz.

Those members still in school are Al Brown, Bob Edwards, Vince Gregg, Bruce Finlayson, Bob Johnson, Paul Merkel, Jim Peterson, Jack Starrett, Don Steele, and Bill Schlauch. The officers for the year were Paul Merkel, president; Al Brown, vice-president; Bob Johnson, secretary; Vince Gregg, treasurer; and Don Steele, sergeant-at-arms.

At the end of a year marked by less activity than usual on the campus front, members report a successful two-weeks' initiation of the freshmen, and at the close of the basketball season the induction of the new lettermen, Brincken, Edwards, Hull, Roestel, Rosenkranz, and Schlauch.

Letters were given out by Coach Munn at the All-Awards Banquet held in McMillan Hall, April 14, in honor of the eleven Enlisted Reservists reporting to Fort Lewis, April 16. Four of the eleven were members of the "W" Club. Speakers on the banquet program were Dr. Frank Warren, who talked on "Soldiers All," Frank Burgess, Master of Ceremonies, and Loren Gothberg.

First row—Vince Gregg, Ray Roestel, Mr. Newcomb, Paul Merkel, Russell Rosenkranz, Jim Peterson, Hubert Hull. Second row—Bruce Finlayson, Bob Edwards, Jack Starrett, Bob Johnson, Bill Schlauch, Don Steele.



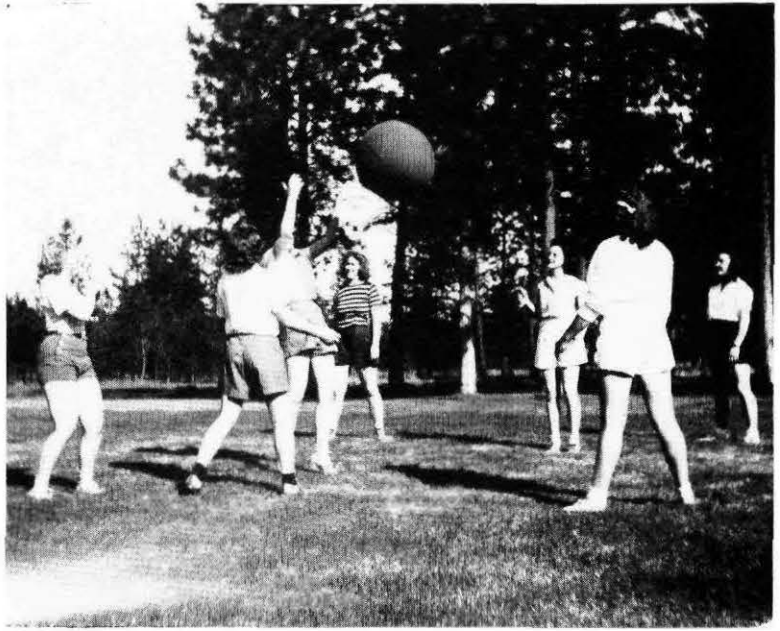


The Women's Athletic Association is one of the leaders of women's activities on the campus, its members having begun the year as "Big Sisters" to new girls. The initiation of freshman women was followed in October by a Gypsy Feed at the W.A.A. cabin on the Little Spokane River. During the year the group sponsored athletic tournaments and in the spring initiated new members. Realizing that one needs a balanced physical program, especially in war time, the girls enthusiastically turned out for fall tennis, badminton, volleyball, basketball, archery, baseball, and spring tennis. Last year with the completion of the new tennis courts the dream of a girls' tournament materialized. The new courts have made tennis a major among women's sports.

A girl is eligible for membership in W.A.A. upon earning one hundred points; for five hundred points she receives her letter, and her sweater for nine hundred. This year, sweaters were awarded to Carol Gardner, Ruth Huntley, Florence Johnson, and Marjorie Klein. Letters were awarded to Ruth Baldwin, Yvonne Green, and Florence Reynolds. The 1942-1943 officers are Ruth Baldwin, president; Kay Sanborn, vice-president; Carol Gardner, treasurer; and Marjorie Klein, acting secretary. Mrs. Carrel is the adviser.

*First row*—Joyce Warren, Carol Gardner, Ruth Huntley, Florence Reynolds, Kay Sanborn, Helen Ghormley, Ruth Baldwin, Gwen Lobdell. *Second row*—Yvonne Green, Mary Elaine Dugan, Lorraine Kitt, Marjorie Klein, Virginia Boggs, Jean Henderson, Marjorie Johnson, Jeanne Bourland, Virginia Hodge, Louise Holder, Carol Wood, Eleanor Hook.





## **JOLLY BALL**

Yvonne Green, Carol Wood, Esther Brown, Jean Henderson, Edna May, Kay Sanborn, Marion Ruby.

## **TUMBLING**

Kay Sanborn, Marion Ruby, Edna May, Jean Henderson, Carol Wood, Yvonne Green, Esther Brown.



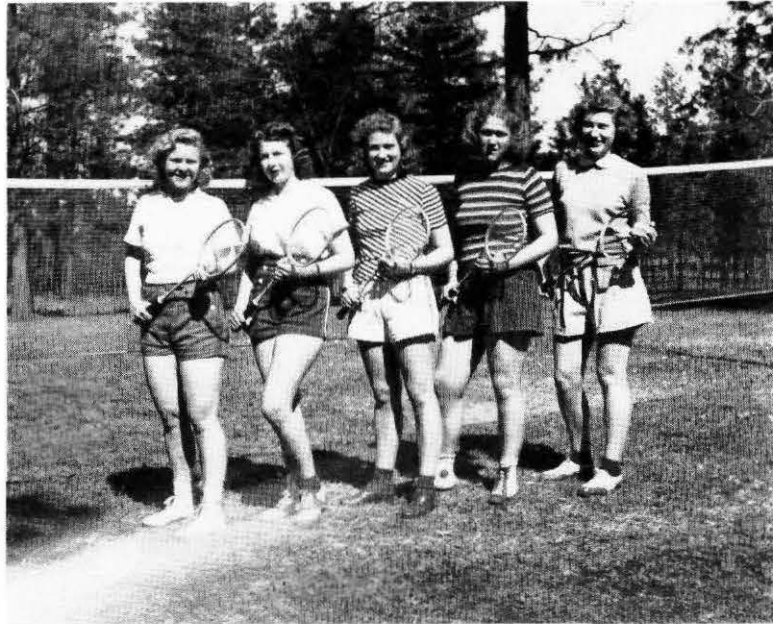


## **BASKETBALL**

Esther Brown, Marion Ruby, Jean Henderson, Kay Sanborn, Edna May, Carol Wood, Yvonne Green.

## **BADMINTON**

Yvonne Green, Gwen Lobdell, Jean Bourland, Jean Henderson, Virginia Huffman.

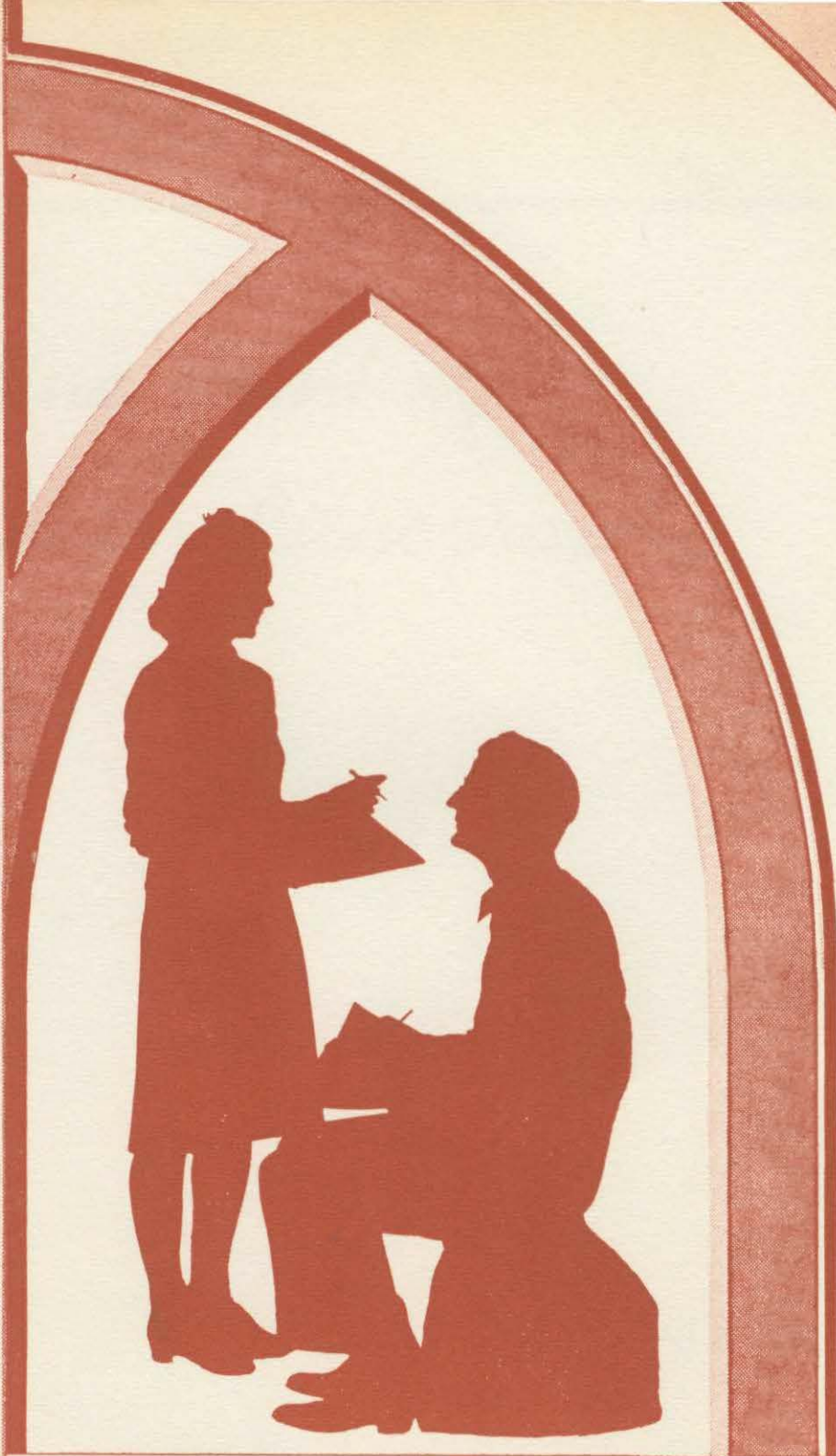


**O**UT from our campus and buildings  
Where peace finds a citadel true,  
March men who are eager for service  
In defense of the red, white, and blue.

They are gone from the gym and the tennis court;  
All still lies the football field;  
As players here, so as soldiers there,  
They will fight till the end —not yield.

From Africa to New Zealand,  
Wherever our flag is unfurled,  
March men from our halls and our classrooms,  
To bring back light to the world.

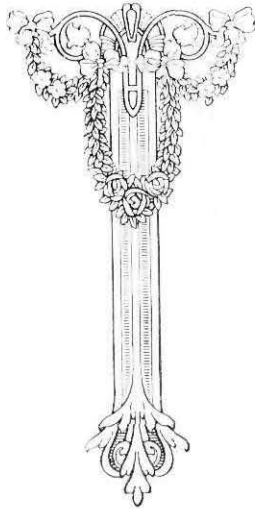
—R. M. H.



WHITWORTHIA

---

*Fine Printing*  
*Photo-Lithography*

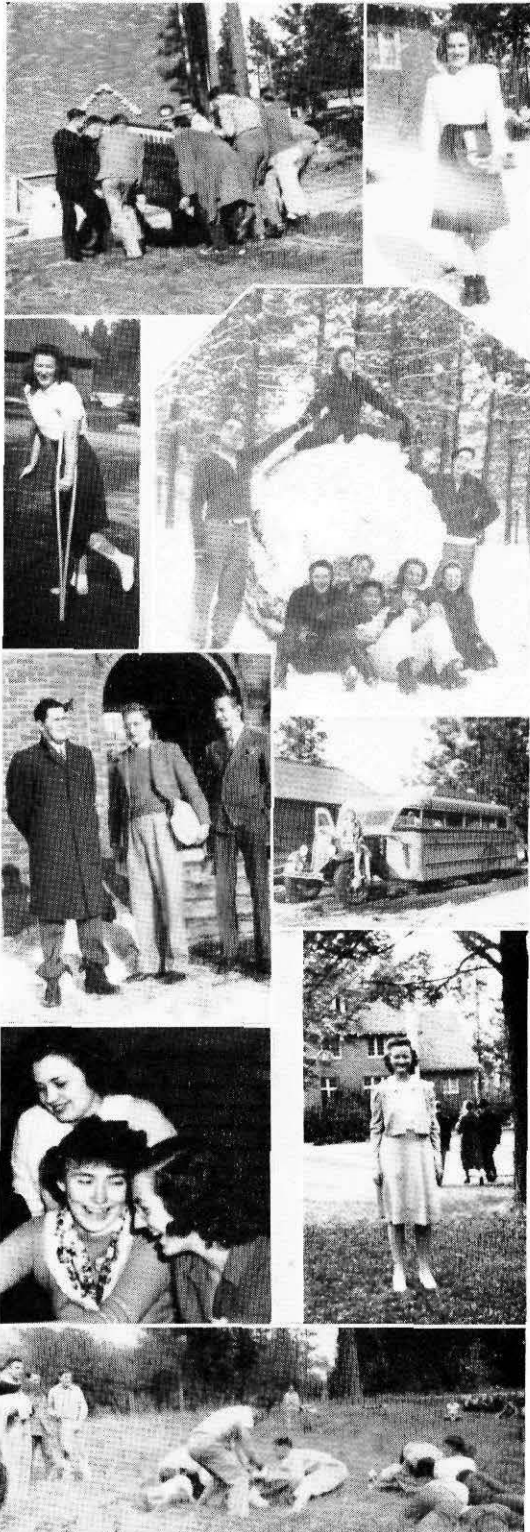


**C. W. HILL PRINTING CO.**

920 Riverside Avenue

Spokane

Washington



---

---

See Us After the Duration

for that new

De Soto or Plymouth

See Us Now for Service on that

De Soto or Plymouth



## Hull-Rodell Motor Company

1102 Sprague

Spokane

---

---

*Congratulations and*

*Best Wishes*

SENIORS

of WHITWORTH

COLLEGE



Riverside Warehouse

SPOKANE

---

---

---

---

SPOKANE'S LARGEST JEWELRY STORE



Diamond Merchants  
for 56 Years



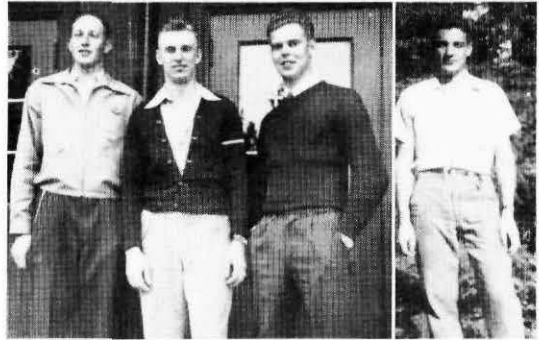
DODSON'S

517 Riverside

Spokane

---

---



Woodwork

Building Materials

LUMBER

EXCHANGE LUMBER &  
MFG. CO.








---



---

## BURGAN'S

MONEY SAVING FOOD STORES



You'll Save at Burgans



36 STORES IN THE INLAND EMPIRE

---



---

## CURLEW

For 35 Years the Inland Empire Discriminating  
Dealers Have Chosen for Particular  
Customers These Curlew Products

ICE CREAM

EGGS

BUTTER

CHEESE

Made Its Way by the Way It's Made

## Curlew Creamery

SPOKANE

CHEWELAH

GRAND COULEE

---



---

---

---

COMPLIMENTS

to the  
SENIORS OF 1943



A & K MARKETS

West 710 Main

Spokane

---

---



CONGRATULATIONS

and

BEST WISHES

to the

GRADUATING CLASS

of 1943

Spokane Toilet Supply  
Company

---

---






---



---

KUPPENHEIMER CLOTHES

ARROW SHIRTS

STETSON HATS

**FOGELQUIST'S MENS STORE**

Sprague and Howard

Spokane

---



---

A lonely sophomore wishes to find a sweet lovable girl; a lover of music and a good student.

DON HEETER

Whitworth College

---



---

Cleaning

Pressing

Alterations

**HANSEN PRESS SHOP**

North Wall at Garland

---



---

COMPLIMENTS

of

**IDEAL LAUNDRY AND  
DRY CLEANERS**

E. 17 Boone

Spokane

---



---

---

---

The young people of today will form the America of tomorrow. It is our wish that every Whitworth student find a full measure of success in the not-too-distant future!

**JOYNER'S  
GREATER DRUG STORES**

Howard at Riverside

Since 1908

---

---

CONGRATULATIONS  
CLASS OF  
1943



**PETERS AND SONS, Florists**

829 Riverside

Main 1154

---

---

OUR BEST WISHES and COMPLIMENTS  
to the SENIORS of  
WHITWORTH COLLEGE



**FOURTH PRESBYTERIAN  
CHURCH**

REV. D. C. DEIBLER, Pastor  
Baldwin and Dakota Spokane

---

---





Good Luck  
and  
Best Wishes

WHITWORTH CLASS  
of 1943

•

This space is especially dedicated to those men and women who are going forth from our campus to serve their God and Country. Our thoughts are with you always, and we hope that you will all be back among us soon.

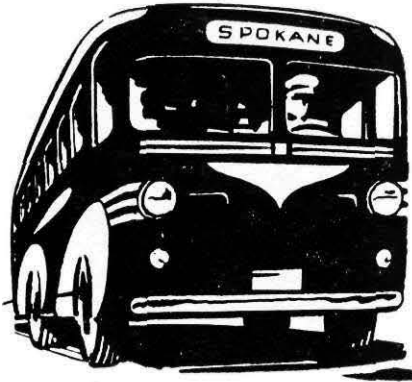
•



---

---

POSTELL PRODUCE  
COMPANY

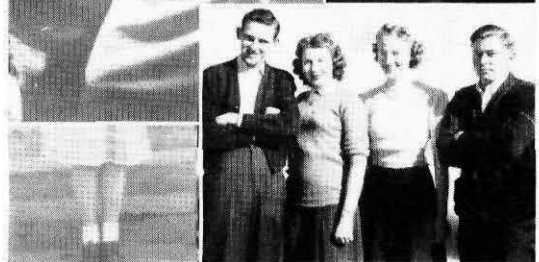
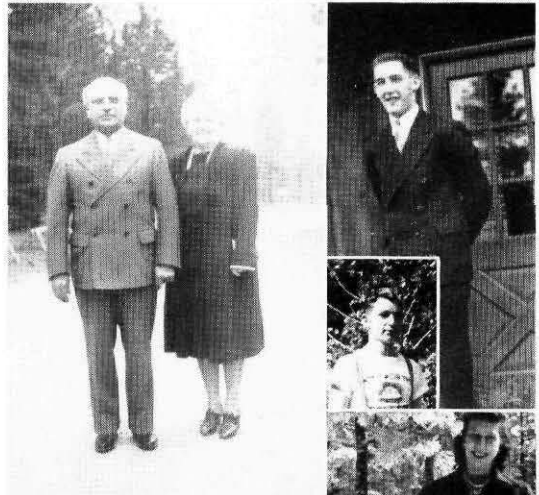
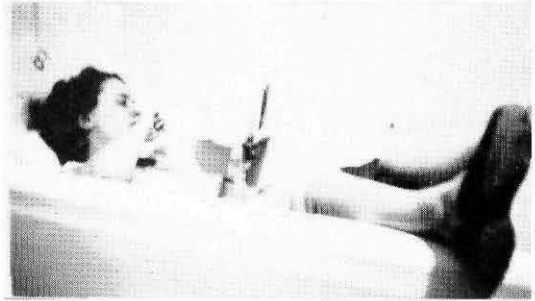


## Serving

Spokane, Coeur d'Alene, Kellogg, Wallace, Geiger Field, Cheney, Spokane Valley, Chewelah, Colville, Newport, Metaline Falls, Trail, B. C., and all intermediate communities of these Inland Empire routes.



**Spokane Motor Coach Terminal**  
Trent and Howard






---

There is More Letter Writing Now Than Any Other Time in History . . . and Better Correspondence Papers Are Being Used . . .

Kate Smith says:  
"If you don't write your wrong."

Martha Raye says:  
"Don't save on correspondence."

News Commentators say:  
"Write the boys, your boys, more often."

## John W. Graham and Company

707-711 Sprague      Spokane, Washington

---



---

Portraits of Distinction



FRANCIS JAMES

*Portrait Photographers*



901 West Sprague

Spokane

---



---

---

---

DIAMOND RINGS

The Finest of Quality

More for Your Money—Always

at

SARTORI

*Master Craftsmen in Jewelry*

Wall between Riverside and Sprague

---

---

WYLIE - CARLSON

*Prescription Druggist*

---

---

Where You Receive Personal Service

---

---

PHONE MAIN 1188

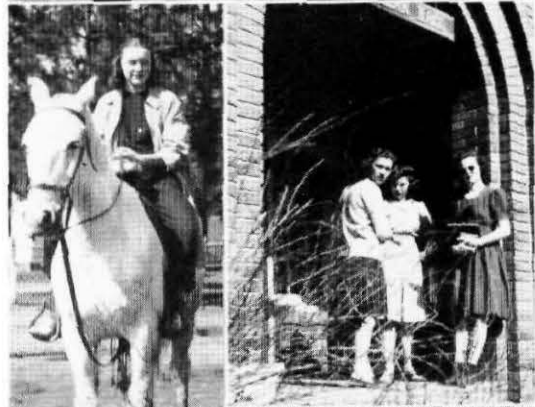
Sprague at Wall

Spokane

Washington

---

---







## Best of Wishes to Class of 1943

Everything for Your Dorm Feed  
or Picnic

### Whitworth Service Station No. 1

Ralph B. Llewellyn, Mgr.



---

---

## Standard Optical Company

COMPLETE OPTICAL SERVICE

Since 1905



## Doerr's Jewelry

GUARANTEES YOU QUALITY

Both Stores Located in the Same Building

717 Riverside

Spokane

---

---

---

---

*Compliments*

SCHUTZ DAIRY



---

---

**Yes. Johnny, You Can  
Have the Kind of World  
We're Fighting For!**



Television, electronics, air transportation, chemical and electrical wonders....

Americans can have all these things if American industry and America's business-managed electric companies are permitted to continue under the free enterprise system.

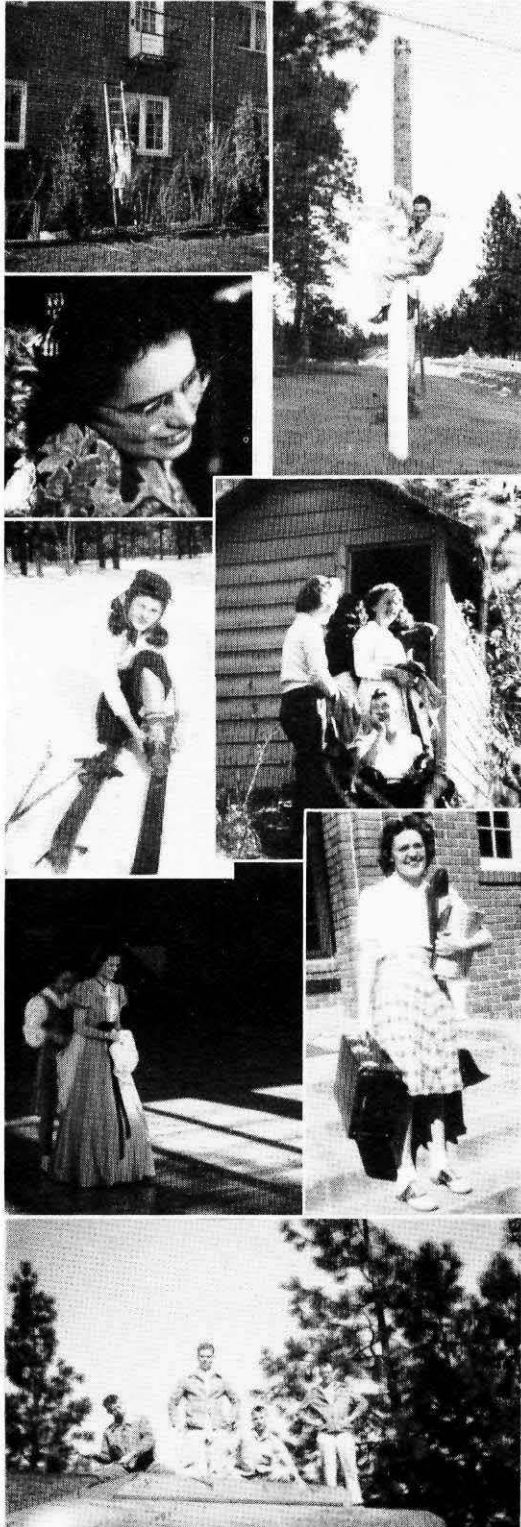
**THE WASHINGTON  
WATER POWER CO.**

*A Self-Supporting, Tax-Paying Business Enterprise*

---

---






---



---

COMPLIMENTS

**Peck Plumbing and Heating  
Company**



S. 211 Washington

Riverside 1185

---



---

**WESTERN SOAP COMPANY**

Manufacturers of  
**SOAPS OF ALL KINDS**

Jobbers in Alkalies of All Kinds and Varied  
Lines of Industrial Products

Spokane

Washington

---



---

OIL            TIRES            TUBES  
GASOLINE    LUBRICATION

O.P.A. Inspector

We Welcome Whitworth Service

**MR. McINTURFF, Prop.**

---



---

---

---

Best Wishes . . . .

SENIOR CLASS

of 1943



Looking Forward to the Future,  
we see the need of  
CHRISTIAN EDUCATION  
and We Know That the Need  
for Such an Education Is Met  
by the Leaders of  
WHITWORTH COLLEGE



McGOLDRICK LUMBER  
COMPANY

Spokane

Washington

---

---





THIS PAGE is the  
Contribution of . . . .

## The Parent Engraving Company

With

BEST WISHES

to

THE CLASS OF 1943



---

---

## Parker Pen and Pencil Sets

The Gift for a College Graduate



### Typewriters

FOR RENT ONLY

We Rent All Types of Typewriters

1 Month—\$3.00

3 Months—\$7.50

Delivery Extra



### "A Key to Success"

New Scientific Lessons in

TOUCH TYPING

with a chart

A Modern Streamlined Method for

Quick Learning at Home



## KERSHAW'S

612 Sprague Ave.

---

---

