

1895

## Catalogue of Whitworth College 1895-1896

Whitworth University

Follow this and additional works at: <http://digitalcommons.whitworth.edu/whitworthcatalogs>

---

### Recommended Citation

Whitworth University, "Catalogue of Whitworth College 1895-1896" Whitworth University (1895). *Whitworth Catalog*. Paper 17.  
<http://digitalcommons.whitworth.edu/whitworthcatalogs/17>

This text is brought to you for free and open access by the University Archives at Whitworth University. It has been accepted for inclusion in Whitworth Catalog by an authorized administrator of Whitworth University.

Harry R. Ryan  
SUMNER

Print - 24 Summer

Mith - 4

7th

Wm

Clark - 13

Ellis - 11

7th

CATALOGUE ...

4 - 4

7 - 7

OF

5

Catalogue

22

May

WRIGHTWORTH

10  
1.06



COLLEGE,

SUMNER, WASH.

1857

1895-6.

Sumner

Wrightworth & Co.

Catalogue

9999



THE SEVENTH

ANNUAL CATALOGUE

—OF—

✧ WHITWORTH COLLEGE, ✧

SUMNER, WASHINGTON,

1895-6.

---

PRESS OF THE SUMNER HERALD.  
Sumner, Wash., 1896.



## College Calendar.



**1896**

Wednesday, September 2nd . . . . . College Year Begins  
 Tuesday, November 24th . . . . . First Term Ends  
 Wednesday, November 25th . . . . . Second Term Begins  
 Vacation . . . . . From December 23rd to January 6th, 1897

**1897**

Tuesday, March 2nd . . . . . Second Term Ends  
 Wednesday, March 3rd . . . . . Third Term Begins  
 Friday, March 5th . . . . . Annual Contest  
 Saturday, May 22nd . . . . . Field Day  
 Sunday, May 23rd . . . . . Baccalaureate Sermon  
 Monday, May 24th . . . . . Address Before Literary Societies  
 Tuesday, May 25th . . . . . Commencement Day

## Board of Trustees.



### CLASS 1.—*Term Expires April, 1897.*

Rev. Arthur N. Thompson, D. D.  
 Rev. J. C. Willert.  
 Rev. Robert Boyd.  
 W. L. Thompson, Esq  
 Capt. W. R. Ballard.

### CLASS 2.—*Term Expires April, 1898.*

Rev. George F. Whitworth, D. D.  
 Rev. Calvin W. Stewart, D. D.  
 Rev. D. M. Davenport, D. D.  
 George F. Orchard, Esq.  
 E. C. Meade, Esq.

### CLASS 3.—*Term Expires April, 1899.*

Rev. G. W. Gibbony.  
 Rev. A. L. Hutchinson, D. D.  
 Alex Baillie, Esq.  
 T. M. Reed, Esq.  
 F. H. Whitworth, Esq.

### OFFICERS OF THE BOARD.

Rev. George F. Whitworth, D. D. . . . President  
 Capt. W. R. Ballard, Esq. . . . Vice-President  
 Professor A. T. Fox . . . . Secretary

### EXECUTIVE COMMITTEE.

#### CLASS 1.—*Ex-Officio Members.*

Rev. Geo. F. Whitworth, D. D.  
 Rev. Calvin W. Stewart, D. D.

#### CLASS 2.—*Term Expires April, 1897.*

W. L. Thompson, Esq.  
 Geo. F. Orchard, Esq.  
 E. C. Meade, Esq.

## FACULTY.

REV. CALVIN W. STEWART, D. D., President,  
*Professor of Christian Ethics and Political Science.*

REV. A. T. FOX, B. L., B. D., Vice President,  
*Professor of Mathematics and Electric and Civil Engineering.*

REV. E. J. HAMILTON, D. D.,  
*Professor of Moral and Intellectual Philosophy.*

DONALD M. BROOKMAN, A. B.,  
*Professor of Greek and Latin.*

MISS HELEN DOW, A. B.,  
*German and Principal of Preparatory Department.* Whitacre, Kent, Wash

MRS. W. L. THOMPSON,  
*Teacher of Elocution and Vocal Culture.*

MRS. LILA E. FOX,  
*Principal of Musical Department.*

REV. GEORGE F. WHITWORTH, D. D.,  
*Lecturer on Pedagogics.*

REV. A. L. HUTCHINSON, D. D.,  
*Lecturer on Church History.*

REV. ARTHUR N. THOMPSON, D. D.,  
*Lecturer on Civics.*

REV. W. A. MAJOR,  
*Lecturer on Elocution.*

J. W. HICKMAN, M. D.,  
*Lecturer on Physical Culture.*

STUDENTS.

SENIORS.

Blackburn, Frank G.	-	-	Coleraine, Pa.
Montgomery, Robert	-	-	Quarryville, Pa.
Stewart, Albert C.	-	-	Sumner, Wash.
Stewart, Calvin W., Jr.	-	-	New York, N. Y.
Stewart, Sarah C.	-	-	Sumner, Wash.
Whitworth, Fred M.	-	-	Orelia, "

SOPHOMORES.

Cameron, Archie	-	-	Howkan, Alaska.
Gregg, George T.	-	-	Tacoma, Wash.
Stewart, James	-	-	Sumner, "

FRESHMAN.

Davenport, Clifford	-	-	Snohomish, Wash.
Davies, Anna	-	-	Carbonado, "
Davies, Samuel	-	-	Carbonado, "
Gould, Harold R.	-	-	Jackson, Alaska.
Hill, Horace	-	-	Port Townsend, Wn.
Johns, Amy <i>Ryan</i>	-	-	Sumner, Wash.
Kennedy, Anna	-	-	Puyallup, "



Price, Guy A.	-	-	Olympia,	"
Price, J. B.	-	-	Olympia,	"
Ryan, Harry	-	-	Sumner,	"
Siders, Ethel	-	-	Sumner,	"
VanVechten, Ward	-	-	Sumner,	"
Whitcomb, Roy	-	-	Ilwaco,	"

## PREPARATORY.

Avery, Gertrude	-	-	Puyallup, Wash.	
Beech, Willow	-	-	Sumner,	"
Craig, Fred W.	-	-	Sumner,	"
Duff, Nannie E.	-	-	Kelso,	"
Esterbrook, Wilford	-	-	Ilwaco,	"
Forsyth, John	-	-	Burnett,	"
Hosking, M. M.	-	-	Wilkinson,	"
Huestis, J. B.	-	-	Olympia,	"
Hulce, E. M.	-	-	Sumner,	"
Kincaid, Susie	-	-	Sumner,	"
Kincaid, Frank	-	-	Sumner,	"
Kennedy, John	-	-	Puyallup,	"
Loomis, Amelia,	-	-	Ilwaco,	"
Loomis, Lewis E.	-	-	Ilwaco,	"
Moore, Ralph	-	-	Puyallup,	"
Murry, John J.	-	-	Ilwaco,	"
Patterson, Nellie	-	-	Olympia,	"
Purvis, Fred	-	-	Puyallup,	"
Reed, Avery, G.	-	-	Olympia,	"
Rees, David	-	-	Carbonado,	"

---

Shaughnessy, John	-	-	Sumner,	"
Shaughnessy, Mary	-		Sumner,	"
Shimondi, Charles		-	Seattle,	"
Stewart, Ella	-	-	Sumner,	"
White, Olive	-	-	Sumner,	"
Williams, Harry	-	-	Sumner,	"

## MUSICAL DEPARTMENT.

Cook, Agnes	-	-	Sumner, Wash.
Davies, Anna		-	Carbonado, "
Davies, Samuel	-	-	Carbonado, "
Hosking, M. M.		-	Wilkinson, "
Loomis, Lewis	-	-	Ilwaco, "
McFarland, Mamie	-	-	Sumner, "
Patterson, Nellie	-	-	Olequa, "
Stewart, Sarah		-	Sumner, "

## CLASSICAL DEPARTMENT.

## FRESHMAN YEAR.

FIRST TERM: Greek—Homer's Odyssey.  
 Latin—Livy, Latin Composition.  
 Mathematics—Ray's Higher Algebra, Geometry, Davies'.  
 English Composition—Biblical and Classical Geography.

Hygiene—Lectures.

History—Oriental (Fisher.)

English Bible—Old Testament.

SECOND TERM : Greek—Homer's Odyssey.

Latin—Horace ; Exercises in Latin Syntax.

Mathematics—Geometry, Algebra.

English Composition.

Hygiene—Lectures.

Biblical Geography—Coleman.

English Bible—History and Chronology.

THIRD TERM : Greek—Homer's Iliad and Greek Prose.

Latin—Horace.

Mathematics—Algebra (completed.)

Geometry (completed.)

Biblical Geography.

Essays and Declamations throughout the  
year.

History—European—Fisher.

English Bible—New Testament.

#### SOPHOMORE YEAR.

FIRST TERM : Greek—Homer's Iliad and Greek Testament  
—Acts.

Latin—Cicero de Oratore.

Mathematics—Trigonometry, Plane and  
Spherical.

Classical Antiquities.

History—European—Fisher.  
English Bible—History and Chronology.

SECOND TERM : Greek—Prometheus of Æschylus.  
Latin—Satires and Epistles of Horace.  
Mathematics—Conic Sections.  
Classic Antiquities.  
History—Mediæval—Fisher.  
English Bible—Comparison of Versions.

THIRD TERM : Greek—Plato's Apology of Socrates and Crito.  
Latin—Satires of Juvenal.  
Mathematics—Gillespie's Surveying, Analytical Geometry, Differential and Integral Calculus.  
History—Mediæval—Fisher.  
Bible—Acts of the Apostles in Latin.

#### JUNIOR YEAR.

FIRST TERM : Demosthenes de Corona.  
Latin—Cicero de Officiis.  
Mathematics—Mechanics.  
Natural Philosophy—Ganot's Physics.  
Rhetoric.  
History—Modern—Fisher.  
English—Bacon.  
German,        }  
French,         } Elective.



SECOND TERM : Greek Testament—Romans.  
 Latin—Tacitus.  
 Mathematics—Astronomy.  
 Chemistry.  
 Natural Philosophy—Ganot's Physics.  
 Rhetoric and Philology.  
 History—Modern—Fisher.  
 German, }  
 French, } Elective.

THIRD TERM : Greek—Greek Testament—Romans.  
 Natural Philosophy—Ganot's Physics.  
 Logic.  
 Rhetoric and Philology.  
 History—Modern—Fisher.  
 Latin,  
 German, }  
 French, } Elective.

#### SENIOR YEAR.

FIRST TERM : Mental Philosophy—Porter's Human Intellect.  
 Moral Philosophy.  
 Geology—LaConte.  
 Political Science---Mills' Political Economy.  
 Civics.  
 History of English Literature.

Latin, }  
 Greek, } Elective.  
 German, }  
 French, }

SECOND TERM : Mental Philosophy---Porter's Human Intellect.

History---Schwegler's History of Philosophy  
 Butler's Analogy.

Comparative Philology.

Zoology.

Civics.

Biology.

History of English Literature.

Latin, }  
 Greek, } Elective  
 German, }  
 French, }

THIRD TERM : Mental Philosophy---Porter's Human Intellect.

Geology.

Botany---Physiological---Gray.

Lithology.

Civics.

Latin, }  
 Greek, } Elective  
 German, }  
 French, }

---

 LATIN SCIENTIFIC WITH MODERN LANGUAGES.
 

---

**FRESHMAN YEAR.**

- FIRST TERM :** Latin—Livy and Latin Prose.  
 Mathematics---Ray's higher Algebra, Geometry, Davies.  
 Biblical Geography---Coleman.  
 Chemistry—Hygiene by Lectures.  
 English Composition.  
 History---Oriental, Fisher.  
 English Bible---Old Testament.
- SECOND TERM :** Latin—Horace; Exercises in Latin Syntax.  
 Mathematics—Algebra, Geometry.  
 English Composition.  
 Organic Chemistry.  
 Biblical Geography.  
 Hygiene by Lectures.  
 English Bible—History and Chronology.
- THIRD TERM :** Latin—Horace.  
 Mathematics—Algebra, Geometry.  
 Biblical Geography.  
 Minerology.  
 Principles of Philology.  
 History—European, Fisher.  
 English Bible—New Testament.

---

**SOPHOMORE YEAR.**

FIRST TERM : Latin---Cicero de Oratore. .  
Mathematics---Trigonometry, Plane and  
Spherical.  
Acts of the Apostles in Latin.  
Old Testament, English.  
History—European—Fisher.  
Classical Antiquities.  
English Bible.

SECOND TERM : Latin—Satires and Epistles of Horace.  
Mathematics—Conic Sections.  
Classic Antiquities.  
Analytical Chemistry.  
English—Spencer.  
History—Mediæval—Fisher.  
English—Comparison of Versions.

THIRD TERM : Latin—Satires of Juvenal.  
Mathematics—Surveying, Analytical Geom-  
etry, Integral and Differential Calculus.  
English, Chaucer.  
History.  
Bible—Acts of the Apostles in Latin.

**JUNIOR YEAR.**

FIRST TERM : Latin—Cicero de Officiis.  
Mathematics—Mechanics.  
Natural Philosophy—Ganot's Physics.



German.

French.

English---Bacon.

History—Modern—Fisher.

Rhetoric and Philology.

SECOND TERM : Latin—Tacitus—Elective.

German.

French.

Rhetoric and Philology.

Natural Philosophy—Ganot's Physics.

Chemistry.

THIRD TERM : German.

French.

English—Shakespeare.

Logic.

Rhetoric.

Natural Philosophy—Ganot's Physics.

History—Modern—Fisher.

**SENIOR YEAR.**

FIRST TERM : German.

French.

Mental Philosophy---Porter's Human Intellect.

Moral Philosophy.

Geology.

Political Science---Mills.

Civics.

History of English Literature.

SECOND TERM : Mental Philosophy.

History—Schwegler's History of Philosophy.

Butler's Analogy.

Comparative Philology.

Metallurgy.

Biology.

Civics.

History of English Literature.

THIRD TERM : Mental Philosophy.

Geology—Dana.

Botany—Physiological—Gray.

Lithology.

History—Hallam's Constitutional History.

Civics.



LADIES COURSE.



FRESHMAN YEAR.

FIRST TERM : Latin—Livy.

French—Grammar and Reader.

German—Grammar and Exercises.

Mathematics—Geometry and Higher Algebra.

History—Oriental—Fisher.

English Composition.

Hygiene by Lectures.

English Bible—Old Testament.

SECOND TERM : Latin—Horace, Prose Composition.  
 French—Pressense's Rosa, Grammar.  
 German—Grammar, Schiller's William Tell.  
 English Composition with Essay Writing.  
 Elocution.  
 English Bible—History and Chronology.  
 Biblical Geography—Coleman.

THIRD TERM : Latin---Horace, Scanning.  
 French.  
 German.  
 Mathematics---Algebra completed and Ge-  
 ometry completed.  
 Biblical Geography.  
 History---European---Fisher.  
 English Bible---New Testament.  
 Principles of Philology.

#### SOPHOMORE YEAR.

FIRST TERM : French---Fleury's Historie de France.  
 German---Schiller's Marie Stewart.  
 Science---Physiology, Use of Charts, etc.  
 Botany.  
 Rhetoric.

History---European---Fisher.

Bible---Acts of the Apostles in Latin.

SECOND TERM : Latin—Satires and Epistles of Horace.

French—Fleury's Historie de France.

German—Schiller.

Science—Physiology.

Rhetoric.

English Bible—Comparison of Versions.

History—Mediæval—Fisher.

THIRD TERM : French—Racine's Athalie.

German—Schiller.

History—Mediæval—Fisher.

English Bible—History and Chronology.

#### JUNIOR YEAR.

FIRST TERM : French—Racine's Iphigenia.

German—Goethe's Iphigenia.

Science—Natural Philosophy.

Rhetoric.

History—Modern—Fisher.

English---Bacon.

SECOND TERM : French.

German.

Science---Natural Philosophy and Chemistry.

Rhetoric and Philology.

Astronomy.



THIRD TERM : French.  
 German.  
 Science---Natural Philosophy and Chem-  
 istry.  
 Logic.  
 Rhetoric and Philology.  
 History---Modern---Fisher.

**SENIOR YEAR.**

FIRST TERM : French.  
 German.  
 Mental Philosophy---Porter's Human In-  
 tellect.  
 Moral Philosophy.  
 Geology---La Conte.  
 Political Science---Mills.  
 Civics.  
 History of English Literature.

SECOND TERM : French---French Conversations and Reviews  
 German---German Conversations and Re-  
 views.  
 Mental Philosophy---Porter's Human In-  
 tellect.  
 History of Philosophy---Schwegler.  
 Zoology.  
 Biology.  
 Butler's Analogy.

Comparative Philology.  
 Civics.  
 History of English Literature.  
 THIRD TERM : Mental Philosophy.  
 Geology.  
 Botany—Physiological.  
 Lithology.  
 Civics.



### CIVIL ENGINEERING.



### FRESHMAN YEAR.

FIRST TERM : French.  
 Algebra.  
 Geometry.  
 English Composition.  
 History.

SECOND TERM : French.  
 Algebra.  
 Geometry.  
 Trigonometry.  
 Draughting—Plain and Colored Topography.  
 English Composition.

SECOND TERM : French—Classical Authors.  
 Surveying—Gillespie's.

English Composition.

History.

Draughting—Mapping with Sections, etc.;  
Field Work.

**SOPHOMORE YEAR.**

FIRST TERM :

French.

Railroad Curves.

Analytical Geometry.

Chemistry.

History.

Draughting—Railroad Profiles and Cross-  
sections, etc., Field Work.

SECOND TERM :

French.

Rhetoric.

History.

Draughting—Intersections and Develop-  
ment of Surfaces.

THIRD TERM :

French.

Differential Calculus.

History.

Draughting—Shades and Shadows; Linear  
Perspective, etc.

**JUNIOR YEAR.**

FIRST TERM :

Integral Calculus.

Mechanics.

Natural Philosophy—Ganot's.

German.

History.

Rhetoric.

Draughting—Lettering, etc.

SECOND TERM : German.

Natural Philosophy—Ganot's.

Chemistry.

Rhetoric.

Draughting—India Ink and Color Shading, etc.

THIRD TERM : German.

Natural Philosophy—Ganot.

Rhetoric—Whately.

History.

Draughting—Construction, Copying, Tracing, Blue Print Copying, etc.

#### SENIOR YEAR.

FIRST TERM : Mental Philosophy—Porter's Human Intellect.

Moral Philosophy.

Geology.

Political Science.

Draughting—Machinery and Architecture.

SECOND TERM : Mental Philosophy.

History—Schwegler's History of Philosophy

Butler's Analogy.

Biology.

Zoology.

Draughting—Graphical Statics as Applied  
to Bridges.

THIRD TERM : Mental Philosophy.

Lithology.

Civics.

Hydromechanics—Bowser.

Draughting—Thesis.

—❖—❖—❖—❖—  
**NORMAL AND BUSINESS COURSE.**

—❖—❖—❖—  
**FIRST YEAR.**

FIRST TERM : Reading.

Orthography.

Penmanship.

English Grammar.

U. S. History and Constitution.

Arithmetic.

SECOND TERM : Reading.

Orthography and Penmanship.

English Grammar.

U. S. History and Civics.

Arithmetic.

THIRD TERM : Elocution.

Orthography and Penmanship.

English Grammar.

General History—Egypt and Syria.

Physical Geography.

Physics.

**SECOND YEAR.**

- FIRST TERM : Bookkeeping.  
Algebra.  
English Composition.  
Chemistry.  
General History—Greece and Rome.
- SECOND TERM : Bookkeeping and Commercial Law.  
Algebra.  
Descriptive Astronomy.  
General History—English.
- THIRD TERM : Constitutional Law.  
Geometry.  
Geology.  
General History—France.  
Literature.

**THIRD YEAR.**

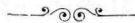
- FIRST TERM : Geometry.  
Algebra.  
Physiology.  
Rhetoric.  
General History—Germany.  
German or French.
- SECOND TERM : Geometry.  
Algebra.

Physiology,  
 Botany.  
 Mental Philosophy.  
 German or French.

THIRD TERM : Trigonometry and Surveying.  
 Moral Philosophy.  
 Draughting.  
 German or French.  
 Theory and Practice of Teaching.



#### PREPARATORY COURSE.



#### FIRST YEAR.

FIRST TERM : Latin.  
 Analysis of Sentences.  
 History of U. S.  
 Orthography.  
 Penmanship.

SECOND TERM : Latin.  
 Greek.  
 History of U. S.  
 English Composition.  
 Orthography and Penmanship.

THIRD TERM : Latin—Fables and Latin Composition.  
 Greek—Harkness.  
 History of U. S.



English Composition.  
Orthography and Penmanship.

**SECOND YEAR.**

- FIRST TERM : Latin—Cæsar and Latin Composition.  
Greek—Fables and Greek Composition.  
Roman Mythology.  
Orthography.  
Penmanship.
- SECOND TERM : Latin— Cæsar and Latin Composition.  
Greek—Analysis and Greek Composition.  
Grecian Mythology.  
Orthography and Penmanship.
- THIRD TERM : Latin—Cicero's Orations and Latin Com-  
position.  
Greek Analysis and Greek Composition.  
Physical Geography.  
Orthography and Penmanship.

**THIRD YEAR.**

- FIRST TERM : Latin—Virgil and Latin Composition.  
Greek—Analysis and Greek Composition.  
Algebra.  
Orthography and Penmanship.
- SECOND TERM : Latin—Virgil and Latin Composition.  
Greek—Herodotus and Greek Composition.  
Algebra.  
Orthography and Penmanship.
- THIRD TERM : Latin—Virgil and Latin Composition.  
Greek—Herodotus and Greek Composition.  
Geometry—Three Books.  
Orthography and Penmanship.

**MUSICAL COURSE.****PIANO.**

- FIRST YEAR :** Lebert and Stark, Volume 1.  
 Czerny.  
 Kohler, Op. 50.  
 Sonatines—Clemento or Kuhlan, etc.
- SECOND YEAR :** Lebert and Stark, Vol. 2.  
 Czerny.  
 Sonatas—Mozart or Hayden.  
 Bach's Inventions, etc.
- THIRD YEAR :** Lebert and Stark, Vol. 3.  
 Czerny.  
 Bach's Preludes and Fugues.  
 Beethoven's Sonatas.  
 Mendelssohn's Songs Without Words.  
 Chopin Waltzes, etc.

**VIOLIN.**

- STUDIES:** Henning's Violin School.  
 Charles Dancla's Studies.  
 Kruetzer's Sonatas.

**CORNET.**

- STUDIES:** Arbou's Method.  
 Arbuckle's Studies.  
 Selections from Benj. C. Bent.  
 J. Harman Levy.  
 T. V. Short.  
 J. W. Rollinson.  
 Cogswell and Steinhauser.

Full Drill in Double and Triple Tongueing.

---

**ART DEPARTMENT.****Course of Study.**

Drawing in pencil, charcoal and crayon from objects, flat and cast; portraiture in crayon, oil and pastel; landscape, animal painting; fruit and flowers in black and white; oil, water colors, pastel.

---

**THE DESIGN OF THE INSTITUTION.**

It is intended to give to both sexes a thorough course of education, equal to that of our best Eastern colleges, guarding well the moral and religious life of the students, ever directing them in the pursuit of that learning and culture of the heart and mind that make the finished scholar. This institution is well fitted for this, being under the control and direction of the Presbyterian Church. Yet, while it is denominational, it does not aim to be sectarian, opening its doors to all lovers of truth and learning.

**THE POSITION OF THE COLLEGE.**

Whitworth College is situated at Sumner, in the central part of Western Washington, in the beautiful Puyallup valley, surrounded with mountain scenery calculated to give inspiration to the artist and the lover of the beautiful in nature.

Mount Rainier, or Tacoma, rises up in the distance 14,444 feet above the sea level, with her eternal snow and winter, as the proud sentinel of the many productive valleys around her, always inviting the admiration of the tourist and soliciting the speculation of the scientist.

The climate in this part of Washington is salubrious and healthful. The town is well supplied with clear, sparkling water brought from the springs of the foothills of the Cascade mountains.

One of the particular advantages of the College is that of its position between the two great cities of the Northwest, being twelve miles from Tacoma and twenty-eight from

Seattle. Access to the College is therefore easy by water and rail. Another very important feature of its location is that it is situated at such a distance from these cities as to have many advantages from their growth in material greatness, yet free from many of those disturbing elements that so detract from a close application to the duties of student life.

The moral tone of Sumner has a reputation above that of any city or town on the Pacific Coast. It is free from saloon influences and is surrounded by a very intelligent, active and enterprising people.

The property of the College consists of a beautiful plot of ground in a very eligible part of town, affording a fine and capacious campus for the athletic exercises of the students. On this is erected a beautiful three-story building of modern style of architecture.

Steam heat is introduced into each apartment of the building; bath rooms and all modern conveniences have been provided for the comfort and health of the students. The new addition to the building has been erected for the purpose of affording better facilities for the accommodation of young ladies. The rooms are large and well ventilated and comfortably furnished. These rooms are limited in number, and parents desiring to send their daughters should make applications for rooms as early as possible.



**SPECIAL REMARKS ON THE COURSES OF STUDY.**  
**BIBLICAL INSTRUCTION.**

The Bible is used as a text book for regular recitations throughout the course in each department of the college. Special attention is given to the harmony of the gospels and the life and words of Christ are made the center of Biblical study. Throughout this course of instruction the language of the English version is constantly examined and referred to as standard English. In political philosophy reference is made to the Hebrew Commonwealth. The truths taught in the Bible in relation to the character,

---

powers and duties of man, are inculcated as fundamental in mental and moral philosophy, and the philosophy of history is identified with the history of redemption.

#### LECTURES.

Arrangements have been made for a series of lectures on pedagogics, civics, special history, physiology and hygiene, such as will give the students practical ideas of these important branches of learning, helping them on in their research and study of the text book of the class-room.

#### PREPARATORY DEPARTMENT.

This department is calculated to prepare students for the collegiate courses of study, and includes all the studies that are required for examination and admission to the freshman classes.

#### NORMAL DEPARTMENT.

This department is designed to give thorough instruction in the science and methods of teaching, and also to furnish the student with a competent knowledge of all branches necessary to prepare them for the work of teaching in our public schools. The students of this department will be given the privilege of electing students from the higher courses in mathematics, history, philosophy, ancient and modern languages, or such other studies as may be useful to them in their preparation for professional work.

#### RHETORIC AND ELOCUTION.

Besides the study of the text books, written essays and declamations are required of all the students. Great pains are taken to encourage the habit of simple and earnest communication of connected thought. Mrs. Thompson, an experienced and popular elocutionist, has been engaged to take charge of the department of elocution, and will give instruction to all students who may desire to perfect themselves in this most desirable art.

---

**LADIES COURSE.**

---

This course is designed, by the omission of Greek, to give the ladies more time for the study of music and art and other accomplishments. All the courses of study, however, are opened equally to the ladies, from which they can select as their tastes may suggest. The degree of B. A. will be conferred upon all who complete this course of study.

**MUSICAL DEPARTMENT.**

The object and aim of this department is to give as thorough a course of instruction as can be had in any school on the Pacific coast. Competent teachers have charge of this department, and will be able to lead the student through those difficulties which so often give discouragement to the beginner, and also to assist the more advanced students in becoming masters of classical music.

The works of the masters are used for the piano and for the cultivation of the voice, not exclusive of our best modern composers. Practice in sight reading will be made one of the special features in the entire musical course.

Particular care and attention are given beginners in acquiring the proper method of touch, for upon this acquisition depends their future proficiency and culture in this most beautiful and refining art. Particular attention is also given to vocalization, and pupils are trained to read their notes and play accompaniments. Pupils who complete the full course of studies in the musical department will be granted a diploma.

Private instruction is given on the violin and cornet, and when pupils have attained to such a degree of proficiency as is necessary, they will be admitted to the college orchestra, where they will have opportunity for concert practice.

---

**COMMERCIAL DEPARTMENT.**

This department is intended to give a sound, practical drill in mathematics, letter writing, punctuation and penmanship, before there is an attempt at theoretical and practical bookkeeping. There will also be given students an opportunity to study shorthand. Graham's system of phonography is used. Students will be given special attention in corresponding and reporting styles in connection with the use of the typewriter.

The present demand for the study of telegraphy is provided for by thorough instruction in all fundamental principles of electricity, as applied in the use of the battery, and practice in receiving and sending messages.

A more extended business course is provided, as may be seen by a reference to the curriculum. The object of this course is to give a good practical drill in the English language and mathematics, as well as a general survey of history and study of the sciences. Students taking this course will not only be prepared for the bare routine of their chosen calling, but will have laid a foundation for the acquisition and application of knowledge in connection with their business life. In this pushing and competitive age, the successful business man must be thoroughly equipped, and this department is designed to meet this want. A certificate will be granted to students who complete this course.

**CIVIL ENGINEERING.**

Being impressed with the necessity to provide students with proper facilities for studying civil engineering, a course has been arranged which is intended to give the student a thorough knowledge of the fundamental principles of engineering in connection with a knowledge of history and the German and French languages, as well as the sciences. In this course students are first given thorough instruction in higher algebra, geometry, plane, analytical and spherical trigonometry.



Those who take the engineering course for the full term of four years are instructed in descriptive geometry, railroad curves, analytical geometry, calculus, mechanics, civil engineering, bridge building, geodesy etc., having daily practice in draughting. Special attention is given to mathematics rather than to engineering, for the reason that a thorough training in the former necessarily precedes, and is essential to a good knowledge of the latter, and in a four years' course a student cannot get both. It is admitted by civil and mining engineers that students first take a thorough course in mathematics and obtain a knowledge of the theory of engineering before there is any attempt at practical field work, for upon exact mathematical calculation depends all good work.

The aim of the instruction given in this course is to ground the students in the principles of the mathematical sciences that will make the finished scholar, add one who can be trusted in all of his calculations in practical work. The institution has secured the services of Prof. Wood, C.E., who will give special instruction in draughting, including plain and colored topography, mapping, intersection and development of surfaces, shades and shadows, construction, copying, tracking and graphical statics as applied to bridges, etc. Prof. Wood has had 12 years experience in practical work, and is well equipped with practical suggestions for the student in all kinds of field work, as well as that of the office.

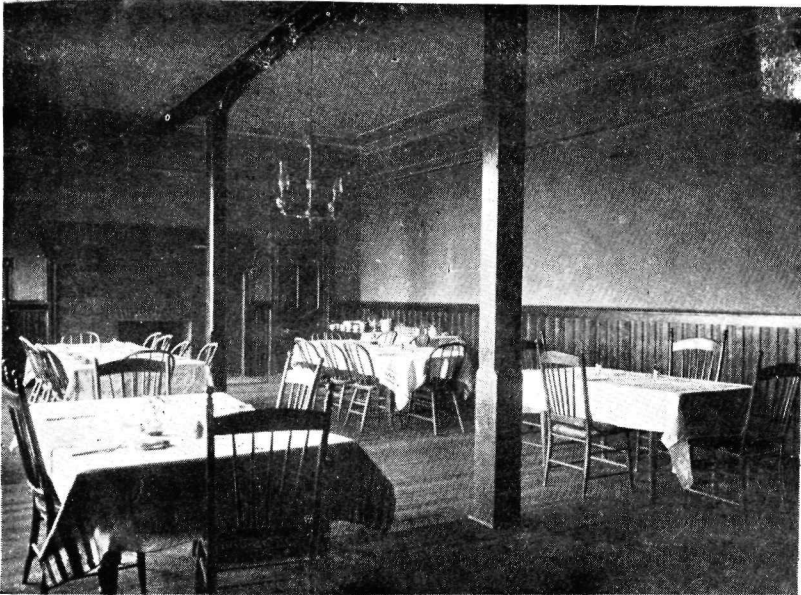
---

#### CLASSICAL COURSE

Special attention is called to the fact while ample provision has been made in the several departments for a strictly practical education, yet the standard of the classical course has been maintained equal to that of the best eastern colleges; and it is recommended to both young men and young women to take this course when it is possible, as the best mode of mental culture.



THE CHAPEL.



THE DINING ROOM.



EXPENSES.

Students in the building, cost per annum, including board, room and tuition.....	\$195 00
Per term.....	70 00
Tuition per term.....	12 00
Tuition per term in Primary Department.....	10 00
Heating of room per term.....	3 00

EXTRA CHARGES.

Instrumental music per term.....	18 00
Use of piano per term.....	4 00
Vocal music lessons per term.....	24 00
Drawing lessons per term.....	10 00
Crayon lessons per term.....	15 00
Painting in oil and water colors.....	24 00
Decorating china per term.....	15 00
Portraiture per term.....	24 00
Violin per term, two lessons per week.....	12 00
Violin per term, one lesson per week.....	9 00
Phonography per term.....	12 00
Typewriting per term.....	12 00
Telegraphy per term.....	12 00

Boarders are expected to furnish for their own use bed-clothing, towels and table napkins.

German and French to special students, to be agreed upon.

A discount of 50 per cent in tuition allowed to children of clergymen, and a discount of 10 per cent to parents sending more than one student.

Tuition strictly in advance at the opening of each term and no remittance will be made except on account of prolonged sickness. Students boarding in the building will be expected to pay one half of their bill for the year on matriculation, and the balance at the opening of the session after Christmas holidays.

Parents and guardians at a distance may deposit funds with any member of the faculty, who will pay particular

attention to the pecuniary concerns of the student, settling his bills and transmitting an account of the expenditure, for which services no commissions will be charged.

#### SPECIAL CARE OF STUDENTS.

The male and female students will occupy separate wings of the building, and no access permitted from the one to the other. Miss Dow, a highly cultivated and experienced teacher, will have exclusive charge of the young women, and will accompany them when necessarily called to leave the college grounds.

The young men will be under the care and supervision of the faculty while in their rooms, and they will not be permitted to leave the college grounds without first obtaining consent.

Special attention is given to the physical development of students by games and athletic sports, and the provision of the most healthful food, with due regard to habits of study and exercise.

#### ATHLETICS.

The college athletic club is a member of the Western Washington Intercollegiate Athletic association. The following is a list of the Whitworth students, who entered and contested for honors in the annual field meet of the association, held in Seattle, May 18, 1896:

George Gregg,	Albert Stewart,
Horace Hill,	Fred Whitworth,
John Kennedy,	Roy Whitcomb,
Samuel Davis,	James Stewart,
Lewis E. Loomis,	Fred Purvis,
Harold Gould,	Ralph Moore.

Out of the 14 gold medals for first honors in the different contests, 7 were won by Whitworth students, proving for the fourth time the superiority of our methods in the physical training of our students, winning for four successive years the championship in the Western Washington

Intercollegiate association. At our last field meet the cup was won for the second time in two successive years, defeating the other three institutions in number of first prizes and in number of points. The development of the physical powers of our students has always been encouraged on a regime only known and practiced in this institution. We find it pays both in mental vigor and energy in the classroom, as well as in the development of those powers that make a strong and healthy body. In addition to the means afforded for these purposes, there is a gymnasium and a track graded for field sports for our students. By the care that has been given in athletic exercise in this institution, not a single student has ever been injured, but on the contrary benefited in every way. We believe in a strong and vigorous manhood—intellectual, moral and physical. Our students are our living witnesses of the success of our methods employed in producing these results.

#### LITERARY SOCIETIES.

There are two literary societies in the college—the Callopean and Lowell—to one of which each student is expected to belong. An annual contest between these societies is held, which has a tendency to excite a friendly emulation among the students. An opportunity is afforded in these societies for students to apply practically their theoretical knowledge obtained in the several departments of study.

#### RELIGIOUS WORSHIP.

The exercises of the college are opened daily with reading of the scriptures and prayer, conducted by a member of the faculty, at which all students are required to be present.

On the Sabbath students will be required to attend divine service in some one of our churches, and when no preference has been expressed by parents or guardians, attendance at the Presbyterian church will be required. At roll call every Monday morning each student will be required to report of his or her attendance at church.

---

**ABSTRACT RULES OF GOVERNMENT.**

1. Students are responsible for the order of their rooms.
2. Students absent from any class without excuse are not entitled to recite until excused.
3. Persons calling upon young ladies must present letters of introduction from parents or guardians.
4. Visitors are not admitted to the private apartments of young ladies. Calls are not allowed to interfere with study hours. No calls permitted on the Sabbath.
5. The young ladies boarding in the school will not visit the town without permission.

Every student on matriculation binds himself to the observance of the above rules, and any violation of said rules forfeits the right to the privileges of the institution.

**EXAMINATIONS AND REPORTS.**

There will be an examination on studies at the end of each term. Reports will be given at the end of each month of class standings and department.

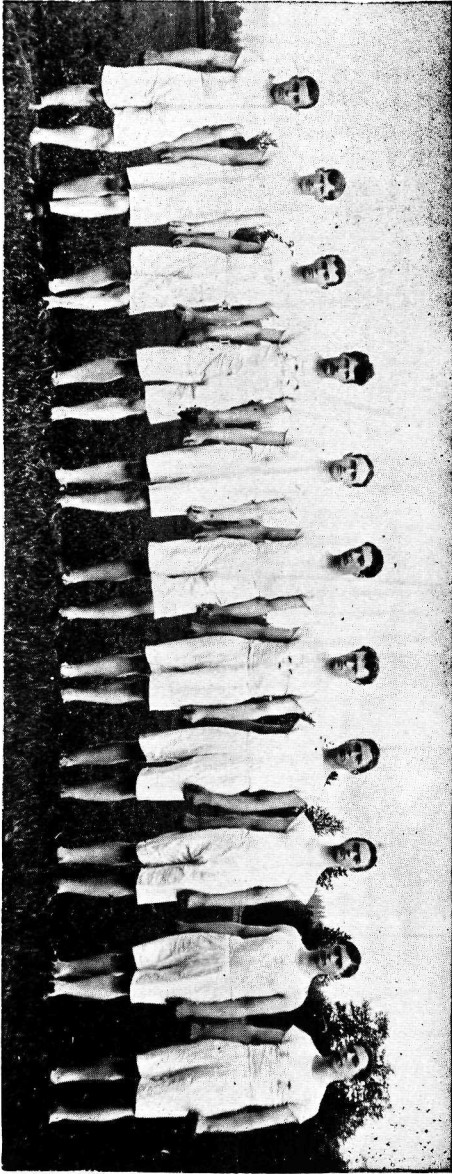
**DEGREES.**

The degree of Bachelor of Arts will be conferred on all graduates of the Classical Department, and of the Ladies' Course ; the degree of Bachelor of Science will be conferred on all graduates of the Scientific Department ; the degree of Master of Arts will be conferred upon any Bachelor of Arts who has been engaged in literary or scientific pursuits for a period not less than three years since his graduation and who has sustained a good moral character ; the degree of Master of Sciences will be conferred upon any graduate of the Scientific Department who has been engaged in scientific pursuits for a period of time not less than three years, and during that time has sustained a good moral character ; the degree of C. E. will be conferred upon all who complete the course of civil engineering.

**BEQUESTS AND DEVISES.**

Each state has special statutory regulations in regard to wills, and it is most important that all testamentary papers be signed, witnessed and executed in all other respects

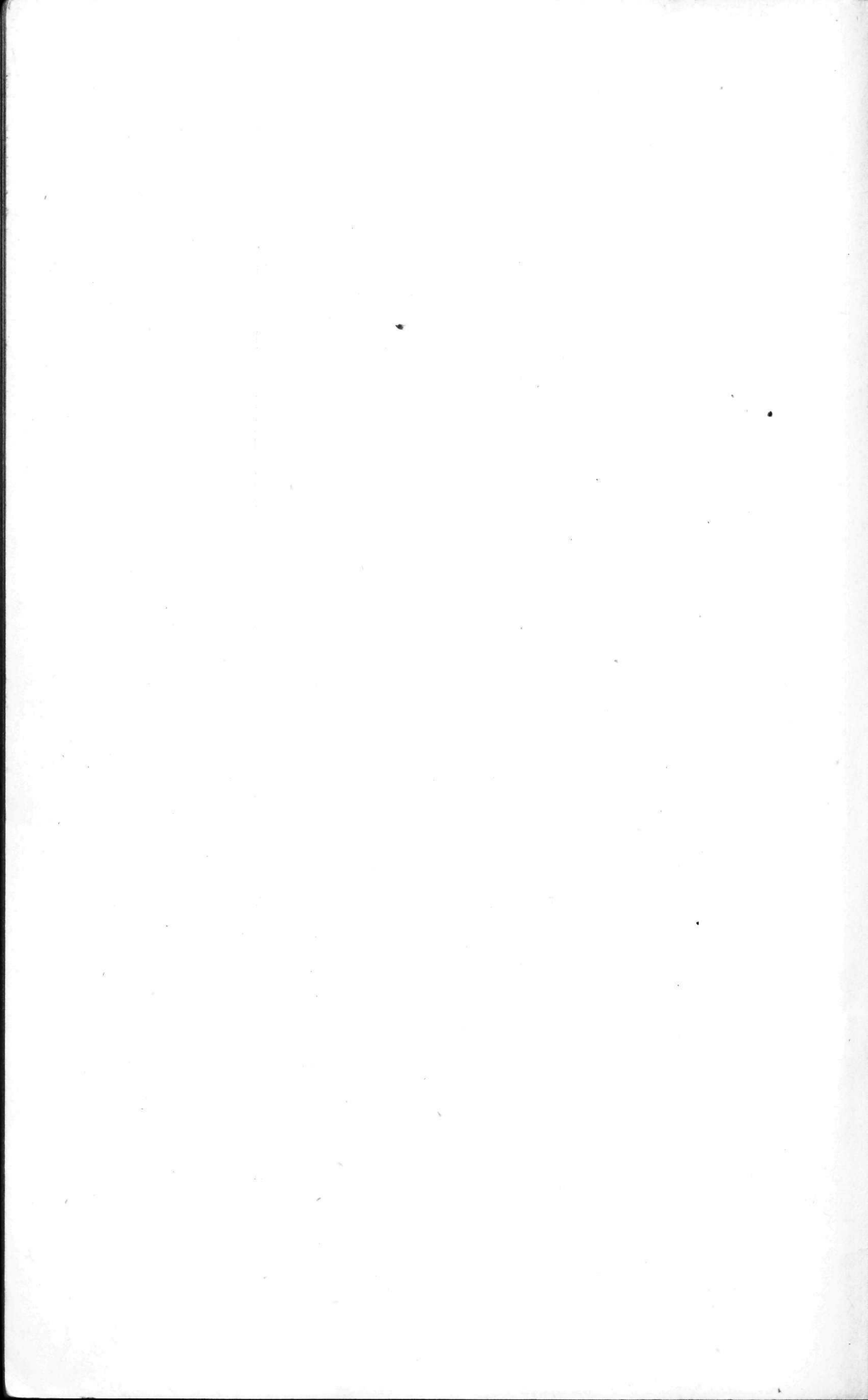




TRACK TEAM.

Winners of the Cup in the W. I. A. A., May 18, 1896.

Sam Fowler  
 Albert Stewart  
 Horace Hill  
 Fred Parris  
 Jim Stewart  
 G. E. Brown  
 Fred Stone  
 Roy Whitcomb  
 Fred Whitcomb



according to the laws of the state in which the testator resides. In all cases, however, the name of the corporation must be accurately given, as in the following terms:

I give and bequeath to the "Trustees of Whitworth College," in Sumner, Washington, and to their successors and assigns, forever, the sum of \_\_\_\_\_ dollars, to be safely invested by said corporation in good real estate security, and the interest accruing therefrom to be applied to the professors in said college.

I give and bequeath a certain lot, situated, etc., to the "Trustees of Whitworth College," in Sumner, Washington, and to their successors and assigns, forever, for the use and purposes of said college, according to the provisions of the charter.

#### Testimonials:

I take pleasure in giving my testimony to the excellent character of Whitworth College. As chairman of the Synodical Committee of Visitation of Whitworth College I was there two days during the annual examinations. The work done during the year, both in amount and kind, was good. The character of the students as seen in the class-room and in their deportment upon the streets and College grounds was good. Especially to be marked is the personnel of the Faculty, all of whom are men and women of high Christian character and attainments. The College is fairly well equipped with needful appliances—better than most of our young institutions upon this coast. The location, buildings and grounds are very pleasant and attractive. The moral atmosphere of the College and of the town is wholesome and good. This College offers just the opportunity which wise parents are seeking of good educational advantages, under wholesome Christian influences and apart from the temptations of large cities.

HIRAM F. WHITE,  
Pastor Presbyterian Church, Kelso, Wash.

State of Washington, }  
office of  
Secretary of State. }

OLYMPIA, April 1st, 1895.

Rev. Calvin W. Stewart, D. D.,  
Sumner, Washington.

My Dear Sir:—I withdrew my sons from a very popular school in California and entered them at Whitworth, in response to a well laid conviction that your College, considering environment and curriculum and the high order of persuasive discipline maintained, was and is superior to any Western college and quite equal to any institution of its character in the East. This conviction has been intensified and verified by the progress made by my sons during their first year under your charge. When the people become acquainted with your facilities and methods, I see no reason why you should not become the popular institution of the Northwest.

Wishing you ever well, I am truly and sincerely yours,  
J. H. PRICE, Secretary of State.

The Synod of Washington at its annual meeting at Tacoma, Oct. 1895, unanimously adopted the following resolution: Resolved, That Whitworth College be commended to the confidence of the churches as an institution of sound learning to which the intellectual and moral training of their sons and daughters may be safely committed.

Back row  
 J B Price Roy Whitcomb Hal Gould Robt. Monaghan  
 2nd Row R. L. Loomis ? Jim Stewart ? Frank Lincoln David Price  
 Neatad Street Frank Blackburn Fred Whitcomb Guy Price Thomas Hill  
 Albert Stewart



FOOTBALL TEAM, 1895.

