

1940

Natsihi Yearbook 1940

Whitworth University

Follow this and additional works at: <http://digitalcommons.whitworth.edu/yearbooks>

Recommended Citation

Whitworth University, "Natsihi Yearbook 1940" Whitworth University (1940). *Natsihi Yearbook*. Paper 23.
<http://digitalcommons.whitworth.edu/yearbooks/23>

This text is brought to you for free and open access by the University Archives at Whitworth University. It has been accepted for inclusion in Natsihi Yearbook by an authorized administrator of Whitworth University.

1940

Natsihi Yearbook 1940

Whitworth University

Follow this and additional works at: <http://digitalcommons.whitworth.edu/yearbooks>

Recommended Citation

Whitworth University, "Natsihi Yearbook 1940" Whitworth University (1940). *Natsihi Yearbook*. Paper 23.
<http://digitalcommons.whitworth.edu/yearbooks/23>

This Book is brought to you for free and open access by the University Archives at Whitworth University. It has been accepted for inclusion in Natsihi Yearbook by an authorized administrator of Whitworth University.



NATSIHI

1940



Reveille

*P*resenting—

THE 1940
NATSIHI

Annual Publication of the

Junior Class

of

WHITWORTH COLLEGE

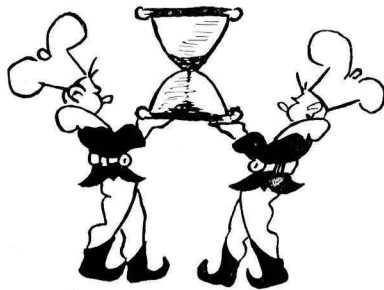
Spokane, Washington

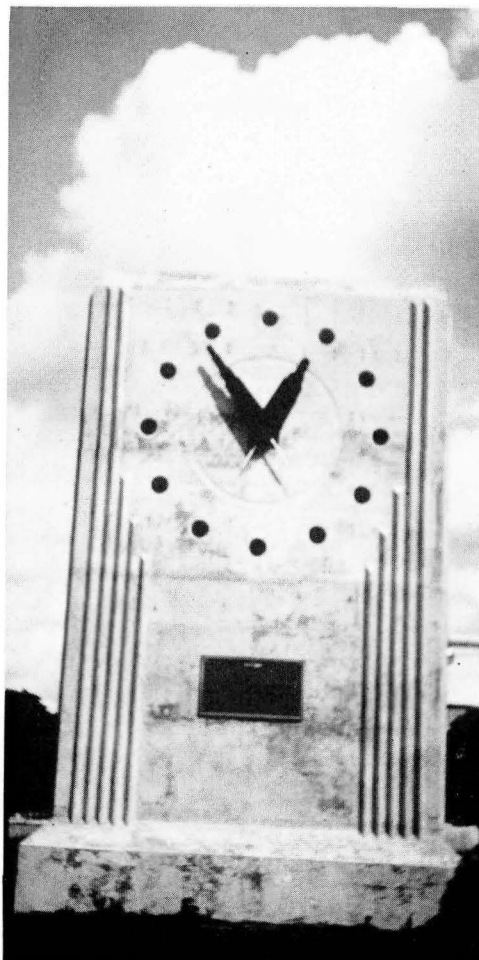
Property of
NATSIHI
Whitworth College
Spokane, Wn.

Foreword

Whitworth, as you round out the fiftieth consecutive year of your life as a college, what theme is better suited to commemorate this Golden Anniversary than that of the "March of Time"?

The Whitworth of 1890 was as different from the Whitworth of 1940 as the outmoded hourglass of yesterday is different from the intricately fashioned timepiece of the present day. The Class of '96 had only three graduates—all of whom were members of the same family. The Class of '40 boasts some thirty graduates, who hail from far and near. Indeed, the very keynote of Whitworth for the last fifty years has been "progress."





But let us pause only for a moment to cast a backward glance at the accomplishments of Whitworth. These past years of growth have been but the beginning of development—the best is yet to come. The coming achievements of Whitworth will overshadow those gone by, and her future will soon eclipse her past. We, the Class of '41, delight in taking an optimistic view of that future; and we are indeed proud to have the honor of presenting to the students this Golden Jubilee Edition of the NATSIHI, which we sincerely believe marks only the beginning of greater things for Whitworth.

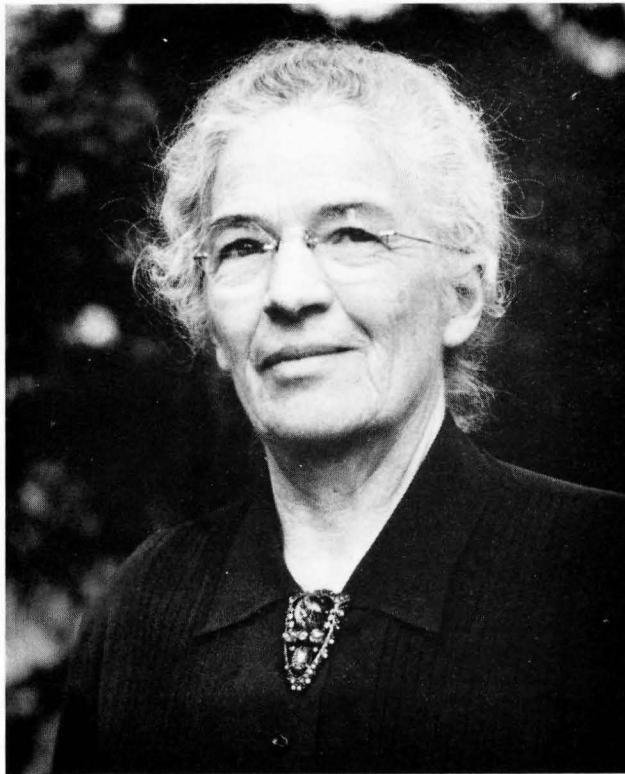


Dedication

The Class of '41 wishes to propose a hearty toast to the "jolly good fellow" who has expertly "fiddled" and wisecracked his way into the hearts of every Whitworthian during the two years he has been on the campus. His excellent contribution to the Music Department plus his great loyalty in backing the Alma Mater in all her activities have won for him a high place in the Whitworth "Hall of Fame." Mr. Uhe, Whitworth is proud to claim you as one of her own!

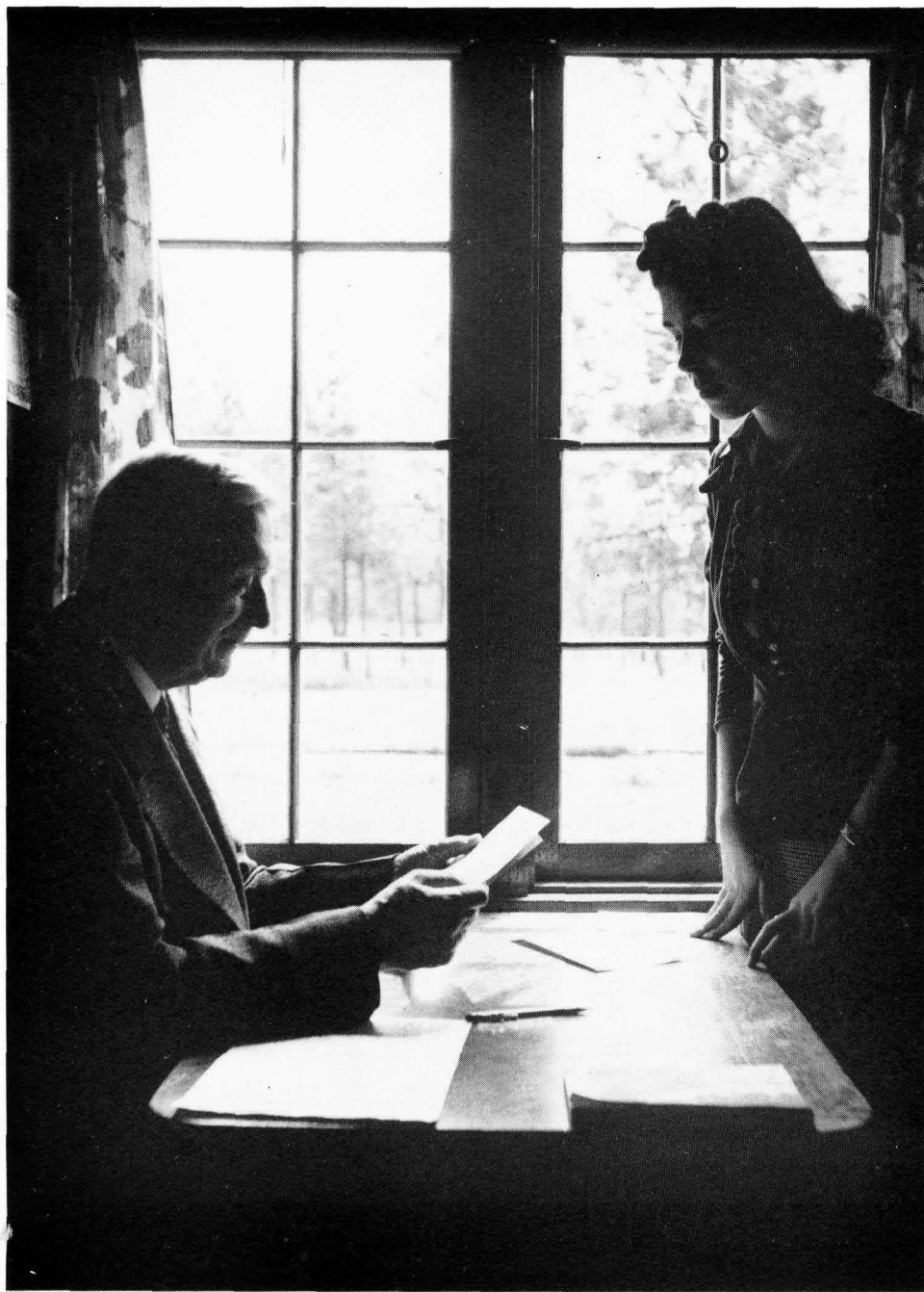
Honor

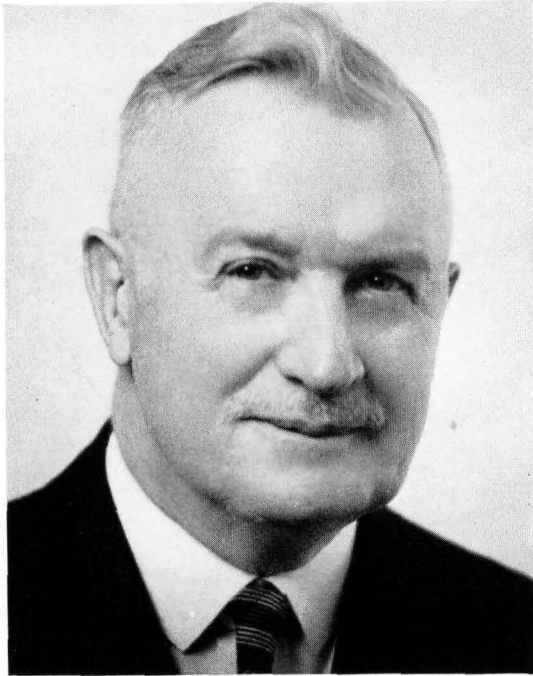
And while the bouquets are still flying about, may we take time out to offer one such to the quietly friendly lady whose presence we ordinarily associate with the clink of silver change and the rustle of bills across the desk in the room next the bookstore—none other than Mrs. Lilian G. Peck, whose spirit of friendly co-operation is symbolic of the true spirit of Whitworth. Mrs. Peck, we *do* appreciate your services to the college, and hope that we may in some way repay you for even half of the good turns you have rendered us here at Whitworth.



Administration







FRANCIS TILEY HARDWICK, Ph. D.
*Acting President,
Dean of Men*



MARION R. JENKINS, M. A.
Dean of Women

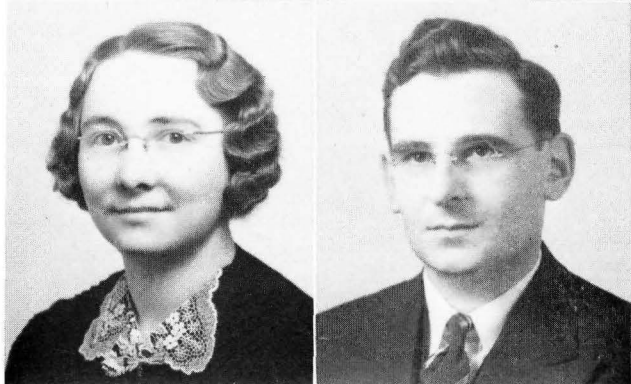
May we congratulate you, Dr. Hardwick, and "Mommie" Jenkins, on having the privilege of sharing in the administrative affairs of the college during the Golden Jubilee Year. We know that you are proud to be the "co-pilots" of Whitworth at this time, and we are proud to have you as such. Keep up the good work!





James W. Counterline, M. A., D. D.
Bible and Christian Education

Anna J. Carrel, M. M., A. A. G. O.
Piano



Estella Baldwin, M. A.
Registrar

Otto G. Bachimont, M. A.
Modern Languages

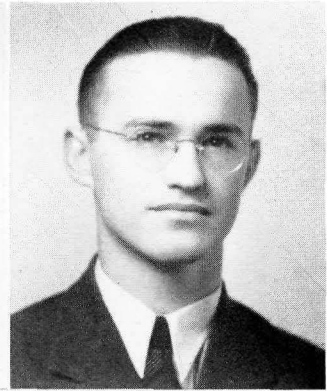


Arthur Emil Ube
Graduate of the Royal
Conservatory of Music, Brussels
Music

Helen Lucile Magill, M. A.
English

La Verne Poole, M. A.
Assistant in English

Duane Robinson, M. A.
Sociology and Education



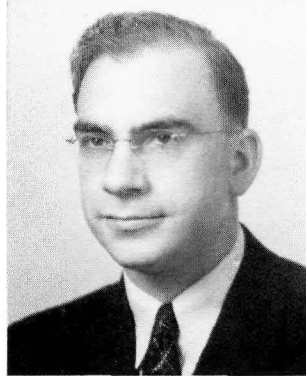
Charles Poole, M. A.
Philosophy, Psychology, and Education

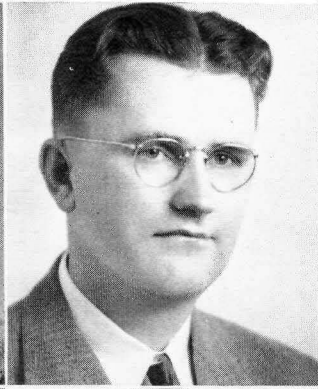
James Forrester, B. A.
Promotional Director



Paul Gustafson, M. S.
Biology

Olive Logerstrom, M. S.
Home Economics





Edith Serier, B. S. in L. S.
Librarian

John A. Carlson, M. S.
Mathematics and Physics



Winifred McNair Hopkins, B. A.
Voice

Gerald Stannard, B. A.
Athletic Director and Coach



Isabelle Carolyn McLeod, B. A.
Speech and Dramatics

B. C. Neustel, M. S.
Chemistry

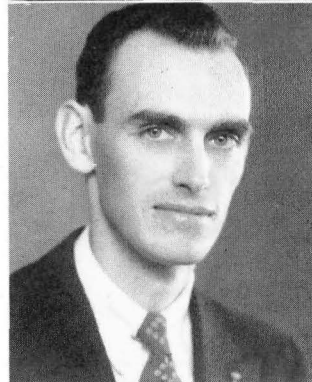
Laverne K. Bowersox, Ph. D.
History and Political Science

Ralph C. Schlichtig, M. S.
Physics and Engineering



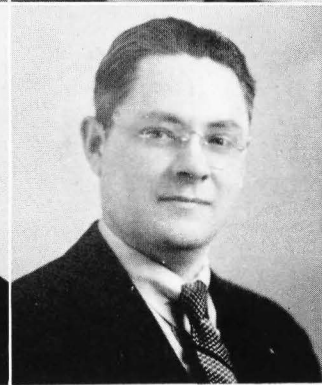
Harold Barnes, B. A.
Bookstore Manager

Lilian G. Peck, B. Di.
Bursar



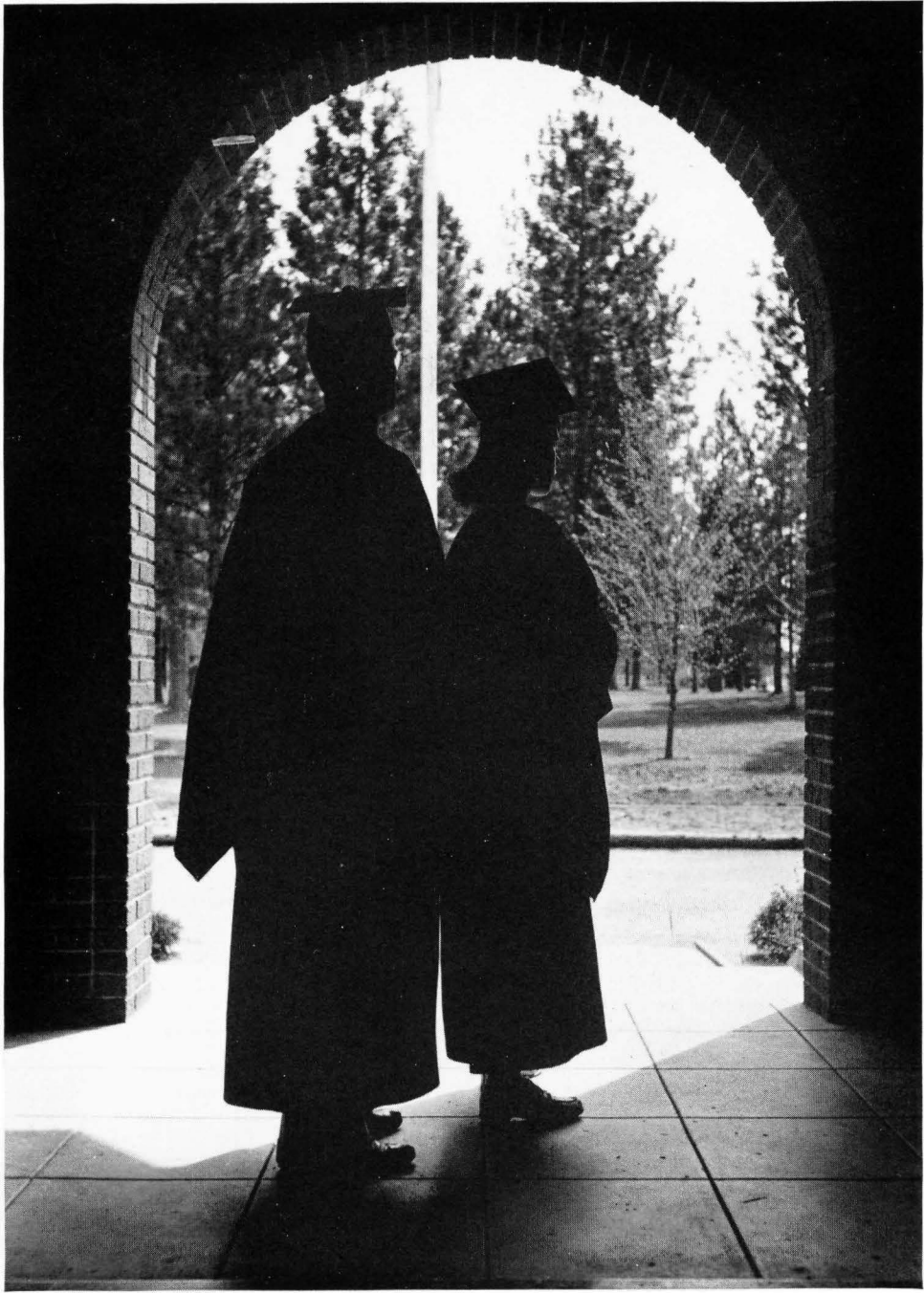
Elisabeth Garten Bachimont, B. A.
Classical Languages

Oscar K. Dizmang, M. A.
Economics and Business Administration



Classes







HARRIET BAGDON

Major—*Applied Music*

Minor—*Psychology*

Poised and efficient; Pirette president; Art Club; vice-president of C. E.; Sefelo, past president; secretary of Phi Alpha; Alpha Beta; Spokane Civic Symphony; *Who's Who Among American Colleges and Universities*; master of the violin.

Ambition—*Two careers*

ROBERT H. BAROWSKI

Major—*English*

Minor—*Public Speaking*

Streamlined, fluent speaker; Christian Endeavor; Alpha Chi; Whitworth Players, "Royal Family"; "W" Club; football; tennis; Manager of Dormitory; intramural basketball; transfer from Seattle Pacific; excels in chapel announcements.

Ambition—*More preparation and then to be a high-school teacher*

EDGAR (ED) BASSFORD

Major—*History*

Minor—*English*

Aggressive politician; "W" Club; Christian Endeavor; Volunteer Fellowship; vice-president of Montana Club; Whitworth Hall Manager; Junior Class vice-president; football; basketball; *Whitworthian* and *Natisihi* sports editor; "Pirates of Penzance."

Ambition—*To be a lawyer*



MARY NELL BUCK

Major—*English*

Minor—*Music*

Stately Montana M'ss; Volunteer Fellowship; Christian Endeavor; secretary of Junior Class; Art Class; chorus; Women's Sextet; May Queen; To know her is to like her.

Ambition—*To serve well in her chosen field*

HAROLD EASTBURG

Major—*Economics*

Minor—*Sociology*

Tall, handsome, and talented; skillful pianist; composer of Whitworth's first "Fight Song"; extension student.

Ambition—*To be a captain of industry*

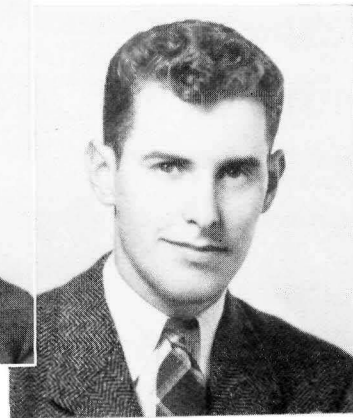
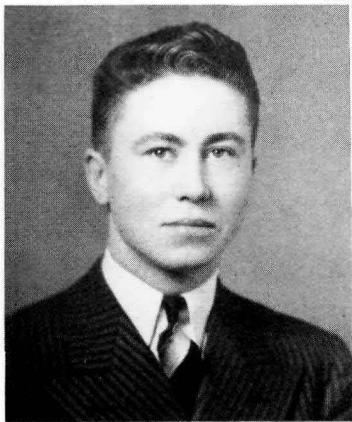
WILLIAM GOLD

Major—*History*

Minor—*Economics*

A mighty "mite"; Yell King; Volunteer Fellowship; debater; vice-president of Student Body; Whitworth Players; Fine Arts Club; Philadelphians; *Natsih* staff; "Silence is golden—but Gold is not often silent"; great debater.

Ambition—*To be a better minister*



LEROY HOOK

Major—*Biology*

Minor—*History*

Capable "Lab" Assistant; "W" Club treasurer; Student Council representative; vice-president of Senior Class; president of Alpha Chi; treasurer of C. E.; football; Jayvee basketball; consistent in everything attempted.

Ambition—*To play shortstop for the Yankees*

STANLEY HUGHART

Major—*Mathematics*

Minor—*Physics*

Excellent manipulator of figures; Phi Alpha; band; Student Council; president of Art Club; Senior Class president; German Club; a real pal to bewildered "Math" students.

Ambition—*to be a professor of mathematics*

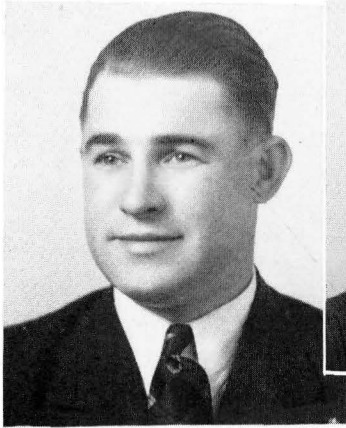
RUSSELL JOHNSON

Major—*History*

Minor—*Biology*

A blond Adonis; football; basketball; "W" Club; quarter interest in Mixed Quartet; B. S from U. of W., 1939; characterized by his fair play; Snider inspirational award and honorary football captaincy for 1939.

Ambition—*To be a high-school teacher*



LEWIS KIRSCH

Major—*Economics*

Minor—*Sociology*

Determined, steadfast; "W" Club treasurer; chorus; assistant advertising manager of *Whitworthian*; Jayvee basketball; football; basketball manager; a regular fellow and a swell guy.

Ambition—*To so live that when he dies even the undertaker will be sorry*

MARY E. KOPER

Major—*Music*

Minor—*English*

Talented; Sefelo; Student Body Representative; secretary of Pirettes; Art Club; Alumni Ideals Cup and Award; Christian Endeavor; Women's Trio; Mixed Quartet; chorus; Lead in "Mikado"; *Messiah* soloist; admired for her radiant Christian life.

Ambition—*To serve Christ on the mission field—and always to be a musician*

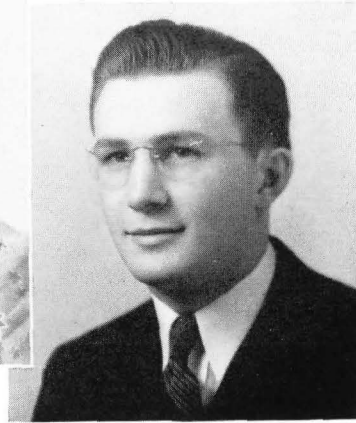
EDNA LARSON

Major—*Christian Education*

Minor—*Education*

Reliable, willing worker; Alpha Beta; Sefelo; Volunteer Fellowship; Christian Endeavor; a self-sacrificing character that will influence the persons with whom she has to deal.

Ambition—*To be an instructor of Christian Education*



LENORA LORD

Major—Sociology

Minor—Home Economics

Lively, short-sheet artist; president of Sefelo; Student Council; Alpha Beta treasurer; Christian Endeavor; secretary of Montana Club; Women's Athletic Association; everybody's friend; you can count on "Lordie."

Ambition—To travel

MURIEL MAY LUDWIG

Major—History

Minor—English and Sociology

Vivid imagination; vice-president of Art Club; Whitworth Players; Volunteer Fellowship; French Club; transfer from Spokane Junior College; future in the field of literature.

Ambition—To be an author

DAVID MACINTYRE

Major—Economics

Minor—Sociology and Education

Congenial, but firm in his convictions; vice-president of A. S. W. C.; Alpha Chi; Student Council; president of "W" Club; Christian Endeavor; Montana Club, president; Member of Executive Board; football; Jayvee basketball; a good organizer and booster.

Ambition—Realized with graduation



HAZEL MCCANNON

Major—*Education*

Minor—*Psychology*

A winning smile and laughing blue eyes; chorus; transfer from University of Idaho; a human metronome and a talented pianist.

Ambition—*To walk a tight rope over Niagara Falls (Don't you believe it)*

ALICE McDONALD

Major—*Physical Education*

Minor—*Health, Education, and Music*

Cultivator of feminine poise; Women's Athletic Director; Women's Athletic Association; transfer from Washington State College; quiet possessor of high ideals.

Ambition—*Physiotherapy*

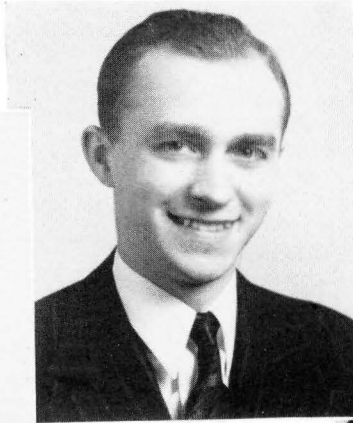
PAULINE MILLER

Major—*Home Economics*

Minor—*Chemistry*

Skilled actress; treasurer of Pirettes; Alpha Beta vice-president; W. A. A.; Phi Alpha; president of Whitworth Players; lead in "Mikado"; "Royal Family." "The Late Christopher Bean." "Importance of Being Earnest"; a loyal Whitworth fan.

Ambition—*Not to be an old maid—Draw your own conclusion (Need I say Mooers?)*



MARY VIRGINIA MOUNT

Major—*English*

Minor—*Speech and History*

Eloquence incarnate; Debate manager; Volunteer Fellowship; Christian Endeavor; president of Montana Club; Sefelo; chorus; Student Council; social chairman of Sophomore Class; Elected to *Who's Who Among Students*; *Natsihi* editor; Her oratory shall promote great causes.

Ambition—*To be both successful and happy*

EUGENE MUENCH

Major—*English*

Minor—*Mathematics*

Executive ability; president of Student Body; Whitworth Players; Philadelphian president; treasurer of Alpha Chi; Debater; *Whitworthian* staff; Volunteer Fellowship; *Who's Who Among Students*; keen sense of humor and an infectious smile.

Ambition—*To enter the ministry*

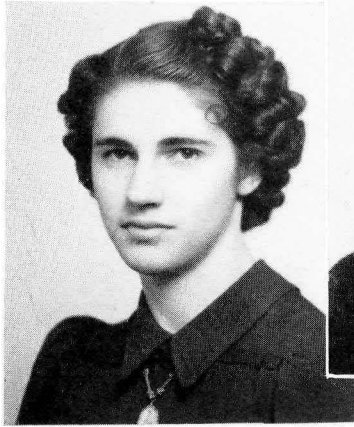
EUGENE NELSON

Major—*Christian Education*

Minor—*Language*

Friendly vice-president of Volunteer Fellowship; Philadelphians; Jayvee basketball; tennis; transfer from Armstrong College, Dallas Theological Seminary, and Northwestern University; a character that inspires confidence.

Ambition—*To do and to be in the Lord's will*



ANNA BELLE PEERS

Major—*English*

Minor—*German*

Lots of personality; Women's Athletic Association; Art Club; secretary-treasurer of German Club; French Club; an extra fancy apple polisher.

Ambition—*To be a librarian*

GLADYS PETERSON

Major—*Education*

Minor—*English*

Independent, good judgment; Christian Endeavor; Alpha Beta; Volunteer Fellowship; president of Sefelo; Whitworth Players; *Natsihi* staff; Women's Athletic Association; Teachers' certificate from Eastern Washington College of Education; spiritual leader.

Ambition—*To find her place and to fill it!*

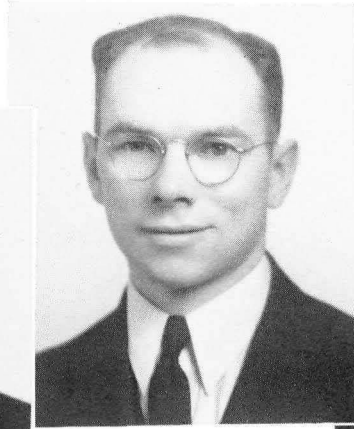
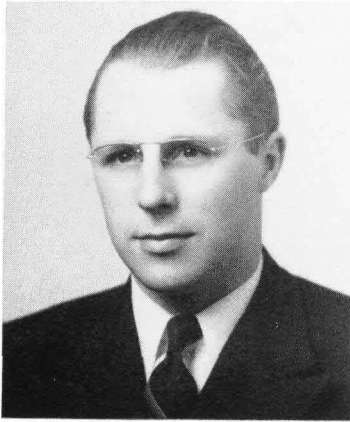
JANICE FRANCES PETERSON

Major—*English*

Minor—*French and Music*

Attractive songbird; secretary of Student Body; Sefelo vice-president; *Natsihi* art editor; Whitworth Players; secretary of Pirettes; Phi Alpha; chorus; Member of Women's Trio; French Club; May Princess; monopoly on the biggest "Richie."

Ambition—*Obvious*



WERNER (ROSIE) ROSENQUIST

Major—*Economics*

Minor—*Psychology*

A go-getter; secretary of "W" Club; Social Chairman of Junior Class; basketball manager; chorus; always active; often seen in Hawley's "merry Oldsmobile"; a valuable aid to any committee.

Ambition—*To find a girl with a good job*

JOHN ROTH, JR.

Major—*Economics and Social Science*

Minor—*Education*

Regularity with alarm-clock precision; student council; treasurer of Junior Class; German Club president; chorus; Christian Endeavor; Volunteer Fellowship; manager of Alpha Chi; Art Club; Whitworth's official chauffeur.

Ambition—*To become a worth-while citizen*

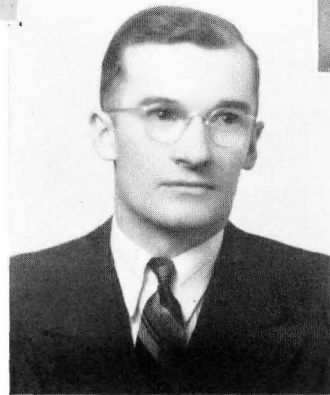
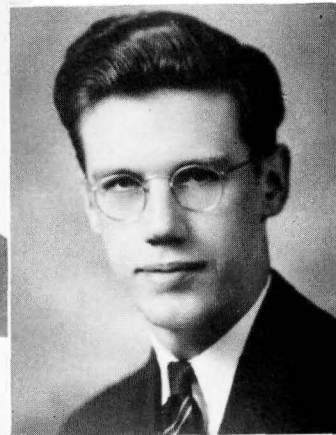
DONALD SCHMIRLER

Major—*Social Science*

Minor—*Speech*

A hard worker and a supersalesman; Whitworth Players; Christian Endeavor; Volunteer Fellowship; Promotional Department; After the fun is over he is around to help clean up; "Let Schmirler do it"—common slogan.

Ambition—*To be high-pressure salesman*



LORETTA STANFORD

Major—*French*
Minor—*Economics*

Studious, good leader; vice-president of French Club; president of Women's Athletic Association; German Club; always smiling; easy to get along with.

Ambition—*To be a secretary in foreign exchange*

MARTHA LEE TOBIE

Major—*English*
Minor—*Sociology*

Carefree, easygoing; president of Women's Athletic Association; *Natsihi* and *Whitworthian* staffs; Alpha Beta; Sefelo; Riding Club; French Club; worth-while friend, with a pleasant disposition.

Ambition—*Quien Sabe?*

PAUL WIKSTROM

Major—*Social Science*
Minor—*No, not any more*

Our little ray of sunshine; Volunteer Fellowship; *Natsihi* editor; treasurer of Junior Class; Associate Editor of *Whitworthian*; ready wit and a capable pen; made especially for back row; head and shoulders above all other Seniors.

Ambition—*None at all*

RAY WOTRING

Major—*History*
Minor—*Sociology*

Domesticated, ex-campus "Casanova"; secretary of *Philadelphians*; Volunteer Fellowship; Dormitory manager; *Whitworthian* staff; *Whitworth* Players; Christian Endeavor; parson-to-be; avocation; "Martha".

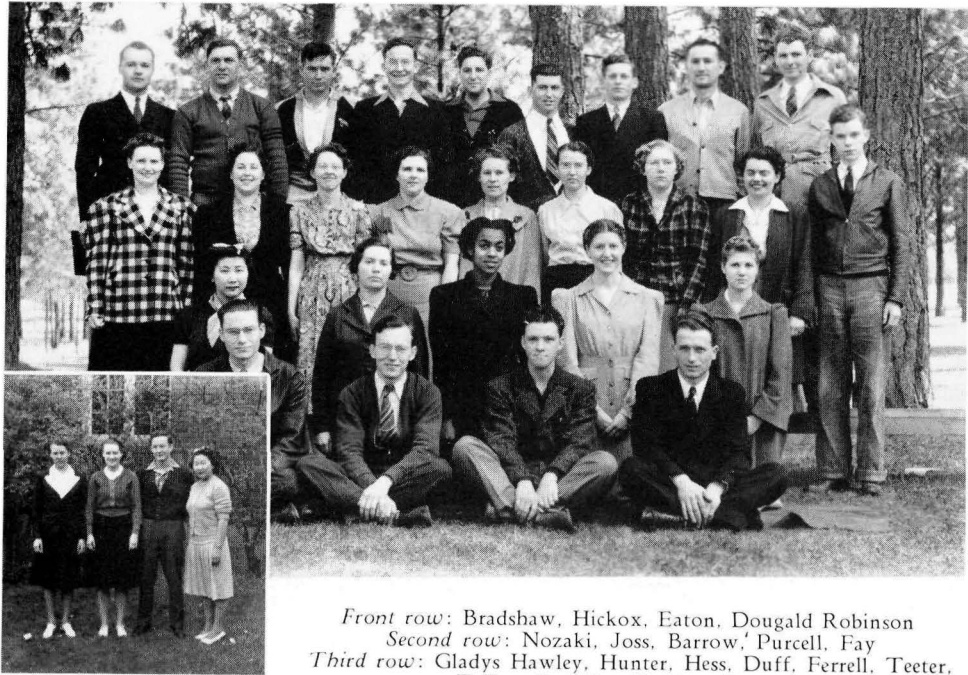
Ambition—*Minister of the Gospel on mission field*



Charles Frazier, Mary Koper

Alumni Ideals Award

This year of the Golden Jubilee celebration, the Alumni Ideals Award goes to Mary Koper, popular senior, whose lovely personality is a byword on the Whitworth campus. Her high scholarship rating, her activity in religious affairs, her interest in athletics, her service to the college—all these excellent traits plus her all-round leadership ability gained for Mary the coveted senior award. She was given the award at a special chapel program by Charles Frazier, president of the Alumni Association.



Front row: Bradshaw, Hickox, Eaton, Dougald Robinson
Second row: Nozaki, Joss, Barrow, Purcell, Fay
Third row: Gladys Hawley, Hunter, Hess, Duff, Ferrell, Teeter,
 DeFoe, Geraldine Hawley, Hanford
Back row: Coleman, L. Stannard, Carman, Unti, Scarpelli,
 L. Rodkey, Bailey, Burnett, Culp

Junior Class

Because the activities calendar was filled, the juniors postponed most of their important social events until the spring. They made up for lost time, however, by stalking the seniors to their hiding place at Diamond Lake during the traditional Senior Sneak. The seniors were recompensed for their humiliation by the customary Junior-Senior Banquet given in honor of the graduating class. The juniors broke precedent this year by giving the seniors a dessert dinner instead of the usual banquet; but all who attended enjoyed the affair, which combined formal dress and an informal program with the best of success. The theme featured "Commencement." The following officers were responsible for its satisfactory outcome: President, Gladys Hawley; vice-president, Dorathea Teeter; treasurer, Francis Unti; secretary, Tami Nozaki. Dr. Bowersox served as adviser.

Sophomore Class

The first official act of the Sophomore Class last fall was to elect the following officers: President, Robert Stephey; vice-president, John Hook; secretary, Dorothy Bunker; treasurer, Rex Blumhagen; and social chairman, Bill Richter. Under the leadership of these officers, the sophomores completed and executed the plans for the annual Freshman Initiation. Then the freshmen and the sophomores fought their grievances to a finish in the Frosh-Soph scrap. The sophomores claimed the distinction of winning all but one of the events. Their most important fall activity was the decoration of the chapel walk for Home-coming.

The sophomores wound up their spring season with a picnic at Loon Lake on April 19, in conjunction with the Freshman Class. A new secretary was also elected to fill the vacancy left by the withdrawal of Dorothy Bunker from college. The adviser for the Sophomore Class during the last two semesters was Professor O. K. Dizmang.

Front row: Hoyt, Bloom, Richter, Eddy, Howes, Pearson
Second row: Chatterton, Blumhagen, Brault, H. Carlson, Harrison, Schell, Jones, Mansfield, McCallum
Third row: Sparrow, Boughton, Brown, S. Hawley, Bunkelman, Waddell, Toole, Gibbs, Schoefield, Messex, Clark
Back row: DeArmand, Ridley, W. Peterson, R. Thompson, Fraser, J. Hook, Blakemore, Potter, Stephey





Front row: Watkins, Sauer, E. Scott
Second row: Ruby, Riek, Remmers, Puckett, Genevieve
 Thompson, Penniman
Third row: Rappe, Trevitt, Wilson, L. Smith, Skeels,
 M. Neustel, Gloria Thompson, Olson
Back row: Nevers, Wright, Swanson, J. Rost, Sowell,
 S. Smith, Snyder

Freshman Class

Always of interest to Whitworth, the Freshman Class, with its seventy or more members, was a true symbol of the Golden Anniversary of Whitworth's founding. The freshmen registered a week earlier than the other classes. During this time, they participated in many class functions, including the Freshman Mixer, the Student Body Mixer, and the Faculty Reception.

Early in the fall, the newest members of the college met to elect as their officers these students: President, John Rodkey; vice-president, Steve Martin; secretary, Marjorie Hand; and social chairman, Phyllis Remmers.



Front row: Baugh, J. Rodkey, Blanford, Moos
Second row: R. Goodsell, Boni, Kirkpatrick, Hand,
 Holder, Lindau, M. Casey, Buckley
Third row: Andrews, R. Baldwin, Krause, Carey,
 C. Hansen, Gilman, Jacobson, McCreary, Cook, Dean
Back row: Martin, Feathers, Hoppe, Chapin, Johnson,
 L. Hansen, Franks, J. Casey, L. Peterson

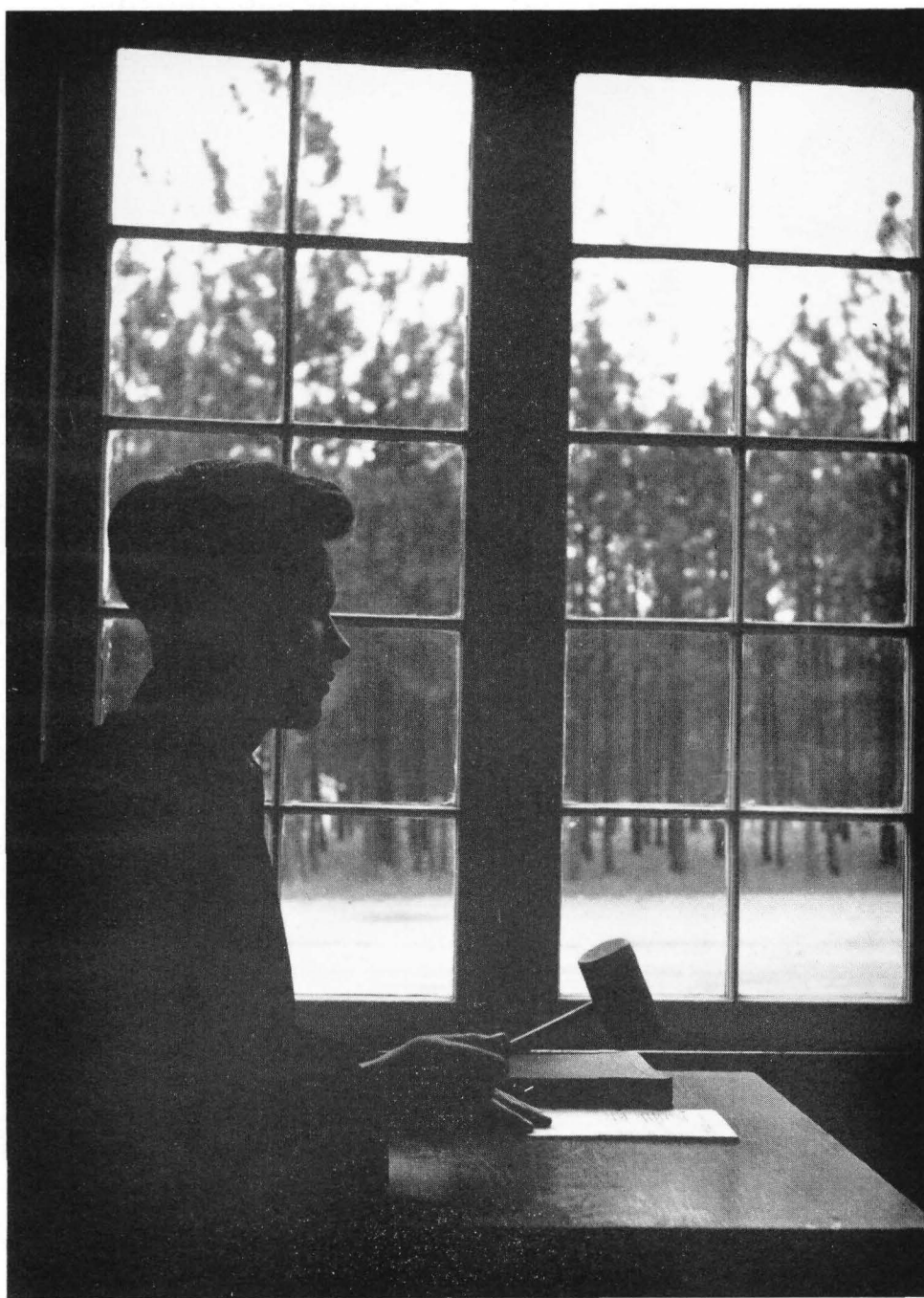
The Freshman Initiation terminated in the annual Freshman-Sophomore Battle. Although the freshmen were downed in the other events, they completely overwhelmed their opponents in the tug of war.

Traditional service of the Freshman Class during Home-coming Week was the building and burning of the Freshman Bonfire. This year, however, no enemies disturbed the fire, although twenty stalwart frosh stood guard all the night preceding the Bonfire.

In spite of the fact that the Freshman Picnic had been postponed in the fall, it was finally given at Loon Lake, April 19, in conjunction with the Sophomore Class. Professor Otto G. Bachimont served as adviser to the Freshman Class.

Activities







Muench, L. Rodkey, L. Hook, Dougald Robinson, J. Peterson

A. S. W. C.

The A. S. W. C., which is composed of all the members of the student body at Whitworth, has to its credit several accomplishments of which it can well be proud. Although little publicity was given to these efforts, the achievements of the A. S. W. C. have been of great value to the student body and to the college.

One of the first acts of the A. S. W. C. was to change the number of amendments to the constitution and also the privileges of voting. It was largely through the efforts of this same body that Whitworth was able to send its first debate team to the tournament at Stockton, California. The originators of this plan were richly rewarded by the excellent showing that the team made.

Greatest of all, however, was the purchase and installation of Whitworth's first printing press. Through this press, Whitworth is able to do a public service for the community and the college.

Officers who presided over the weekly student-body meetings this year were: President, Eugene Muench; vice-president, Lee Rodkey; secretary, Janice Peterson; auditor, Dougald Robinson; student council representative, LeRoy Hook.



Front row: Mount, J. Peterson, L. Rodkey, Muench, Dougald Robinson, L. Hook,
Coleman, Bailey
Second row: Boughton, Brown, Stanford, Martin, Gladys Hawley, Bunkelman, B. Miller,
P. Miller, Nozaki
Back row: J. Hook, Blumbagen, Stephey, Hughart, Nelson, J. Rodkey, Blanford,
Eddy, Wikstrom

Student Council

Composed of the presidents and the vice-presidents of the many organizations of the college, the student council was under the direction of Eugene Muench, president of the A. S. W. C. for the term, 1939-40. The outstanding achievement of the council was its definite action in making a survey of student finances as related to student-body activities and its program. The results were so illuminating that they were used to promote a better-planned student program.



J. Peterson, Remmers, Rosenquist, Richter, L. Rodkey

Social Committee

Although the social committee were mainly responsible for all social functions during the past year, they outdid themselves in planning and executing the arrangements for Home-coming. The theme, emphasizing the approach of Whitworth's Golden Anniversary, was well carried out. It was the opinion of all who attended that the forty-ninth Home-coming surpassed all others.

Other events in which the committee members showed their capabilities were the All-College Mixer, the Christmas Party, the Colonial Party, and the high light of Campus Day — the Beefsteak Breakfast. The following constitute the very successful social committee of the A.S.W.C.: Chairman and vice-president of the student body, Lee Rodkey; social chairman of the Senior Class, Janice Peterson; Junior Class, Werner Rosenquist and Geraldine Hawley; Sophomore Class, Bill Richter; Freshman Class, Phyllis Remmers.

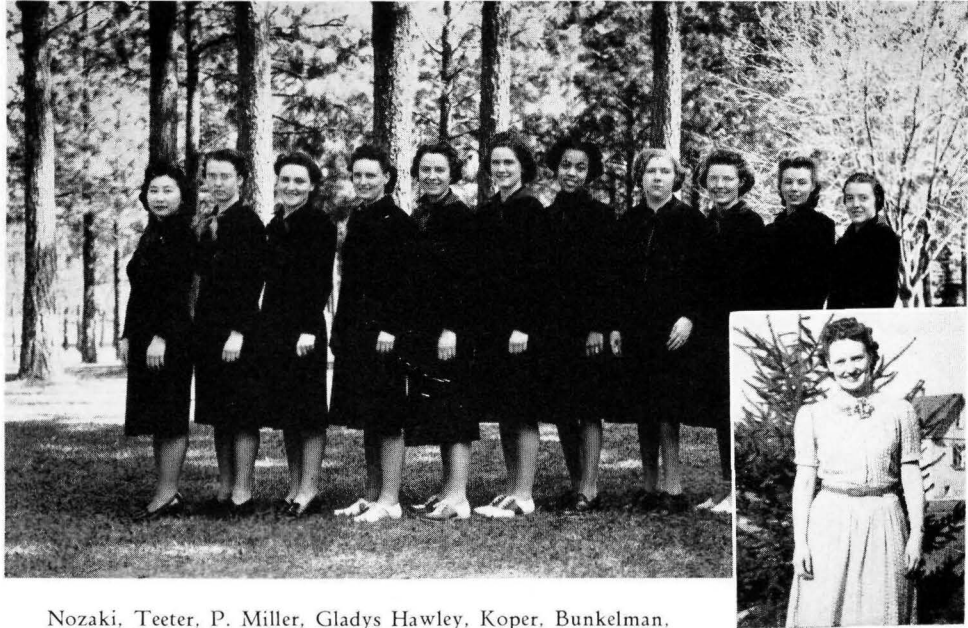


J. Peterson, Bagdon, P. Miller, L. Rodkey, Jenkins, Hughart,
Gustafson, Nozaki, Magill

Phi Alpha

Welcoming as members only those students with a rating of 2.3 for sixty hours of work at Whitworth, Phi Alpha is well known as the "brain trust" of the college. This small, but intelligent, group held a program in the fall to introduce the following new members: Tami Nozaki, Pauline Miller, Janice Peterson, and Lee Rodkey. Another feature of that program was an address by Thomas A. Large, of the Department of Biology at Lewis and Clark High School.

Although the extracurricular activities of Phi Alpha were few in number, Paul Gustafson, as president, and Harriet Bagdon, as secretary, were kept busy with official duties.



Nozaki, Teeter, P. Miller, Gladys Hawley, Koper, Bunkelman,
Barrow, DeFoe, J. Peterson, Bagdon, Boughton

Pirettes

The Pirettes did their utmost to foster an abundance of college spirit on the campus. Working to promote more activities at Whitworth, the Pirettes found their 1939-40 calendar well filled. Their fall season was auspiciously begun with a fireside for the installation of the following officers: Captain, Gladys Hawley; first mate, Tami Nozaki; second mate, Janice Peterson; purser, Pauline Miller; adviser, Miss Marion R. Jenkins.

The contribution of the Pirettes to a successful Home-coming was the initial appearance of a women's drill team marching between halves at the Home-coming game. The next important events were the "W" Club-Pirette Carnival, and the presentation of the Pirette Inspirational Award at the annual Basketball Banquet.

Spring activities included the representation of two delegates, Tami Nozaki and Gladys Hawley, to the Associated Women Students' Western Convention. The last function of the year was the annual Sunday Breakfast attended exclusively by the Pirettes.



Turner, Ludwig, Hand, S. Hawley, Gloria Thompson, Toole

Colonial Party

February, the month of valentines and birthdays of great men, was also the date of the Whitworth Colonial Party. Attired as in the days of George Washington, hoop-skirted dames and their be-wigged partners trod the stately measures of the minuet and the lively Virginia reel. The strenuous figures of the dances were relieved by a fine program and frequent trips to the refreshment table.

Honors for the best-dressed couple went to James Goodsell and Norma Hoff. The prize for the best-dressed man was awarded to Lee Rodkey; Mary Nell Buck received the award for the best-dressed woman.



Front row: Potter, Brault, Bloom, Richter, Mansfield
Second row: Blaisdell, Wolfe, Eddy, Moos, Ruby, L. Rodkey,
 Hoyt, Stephey
Third row: R. Baldwin, Turner, Holder, Gibbs, Goudzward,
 Trevitt, Lindau, Stanford, Bunkelman, Toole, Hoff, Hess
Back row: Hughart, O. Bachimont, Eaton, Schmirler, M. Casey,
 Kirkpatrick, Peers, E. Bachimont, Hand, Dougald Robinson,
 Howes, J. Hook

Modern Language Club

The French and the German Clubs form the basis of the Modern Language Club, which is composed of all French and German students. Both clubs, under the direction of Verna Bunkelman, president of the French Club, and James Goodsell, president of the German Club, completed a very satisfactory year. Important features of both clubs were the frequent meetings at which addresses, foreign dramas, and motion pictures were presented for the enjoyment of the members. Important social events of the year included the annual Christmas party at the home of the club adviser, Prof. Otto G. Bachimont, and the spring picnic at the Bowl and Pitcher on May 10. Latin and Greek students were also invited to attend these parties.



Front row: Carey, Gilman, Turner, Wilson, Trevitt, Carlson
Second row: Roeders, Krause, Koper, Tobie, Boyle, Hunter, Olson
Back row: L. Richardson, Snyder, E. Scott, E. Johnson, J. Goodsell, Roth, Kirsch

Whitworthian Choir

The pride of the vocal division of the music department is the Whitworthian Choir. With the excellent direction of Winifred McNair Hopkins, this group made a fine musical record all through the year. The concert chorus, which numbered about thirty-three, made trips to Davenport, where they appeared in Stainer's "Cruci-





Front row: McCreary, Genevive Thompson, B. Miller, R. Baldwin, Ferrell, Goudzward
Second row: Blaisdell, Ruby, Jones, H. McCannon, Barrow, Hoff, J. Rodkey, Baugh
Back row: R. Goodsell, Eaton, Andrews, Rappe, Hoppe, Hughart, S. Smith, Messex

fixion," and to Oakesdale to present the "Messiah" by Handel. The latter oratorio was also given before a capacity audience at the First Presbyterian Church during the fall semester.

The entire chorus made several trips to some of the smaller towns, such as Post Falls and Coeur d'Alene. Throughout the college year, the Choir contributed to several chapel programs. This group also appeared on the program of the May Festival.





Boyle, Roeders, Wanrooy, Turner, Hoff, Goudzward, B. Miller

Women's Sextet

Always a welcome addition to any entertainment on the campus, the Women's Sextet made a number of appearances during the year. The girls participated in many chapel and church programs besides singing with the chorus.

It was during the Golden Anniversary of Whitworth that the women entered the Music Festival contests of Spokane and received the award, "superior with honors," in their class. To commemorate the occasion, the sextet designed striking costumes of black blouses and white skirts. Members of the group were: First sopranos, Helen Turner and Delores Roeders; second sopranos, Jeanette Goudzward and Mary Boyle; altos, Norma Hoff and Barbara Miller. Mrs. Winifred McNair Hopkins served as director, and Doris Wanrooy was accompanist.

Mixed Quartet

The Mixed Quartet, one of the finest musical groups at Whitworth, rose to newer and greater heights of artistry under the direction of Mrs. Winifred McNair Hopkins. The group was composed of Mary Koper, soprano; Maude McCannon, contralto; Lewis Messex, tenor; and James Goodsell, bass. Eleanor Barrow, gifted young pianist, acted as accompanist. Outstanding appearances of the quartet included services for various city clubs and the Christian Endeavor Convention at the Fourth Presbyterian Church. The group also sang at many small towns, including Clarkston, Newport, and Reardan. In addition, it furnished music for many college functions, such as the Home-coming Banquet, the formal Faculty Reception, and chapel services.

Completing the season was the quartet trip which lasted from April 28 to May 11. Accompanied by James Forrester, promotional director, the group and their pianist filled many engagements both on the Coast and in Canada. The final event of the trip was the entrance in the contest of the British Columbia Music Festival, where the group met with great success.



J. Goodsell, M. McCannon, Barrow, Koper, Messex



Andrews, Baugh, Snyder, S. Smith

Men's Quartet

Although circumstances caused changes in the original group, the Men's Quartet finally employed the talents of these singers: First tenor, Mark Andrews; second tenor, Odin Baugh; first bass, Earl Snyder; and second bass, Sam Smith.

Under the direction of Mrs. Winifred McNair Hopkins, the quartet appeared over the radio, and at churches, schools, and elsewhere. The Men's Quartet celebrated the Golden Anniversary of Whitworth with a tour during the spring vacation, accompanied by Eugene Muench, guest speaker. After visiting Ephrata, Ellensburg, and Yakima, the quartet attended the Christian Endeavor Convention at Wenatchee over the week end.



Jacobson, Hoff, Ferrell, Gilman, Carey

Women's Quartet

The Women's Quartet is composed of Eva Carey, first soprano; Joanne Gilman, second soprano; Betty Ferrell, first alto; Norma Hoff, second alto; and Shirley Jacobson, accompanist. The group sang at the Basketball Banquet given by the "W" Club, and at several teas and church services. In May they went to Hartline, Washington, to give a program for the P.-T. A., singing at high schools on the way.

This quartet has not performed extensively this year, but shows a great deal of promise and may be one of Whitworth's top-notch music groups in the future.



*Front row: Wanrooy, Bagdon, Buck, M. L. Smith, Jacobson, Lindau, Bunkelman, Uhe
Back row: Eaton, J. Rodkey, L. Hansen, Burnett, Forkner, Clark, E. Scott, Chapin, Bradshaw*

Orchestra

Although the activities of the orchestra for this last year were largely limited to private rehearsals, its director, A. E. Uhe, was well satisfied with the progress made by its members. Several new instruments were added to the orchestra, which now numbers about twenty players. With the new music purchased, plus the fine spirit and talents displayed by all the members, the orchestra promises even greater achievements in the future. Whitworth is indeed proud of this excellent group of musicians who have done a great deal toward building the musical reputation of the college.

Band

Under the direction of Prof. Arthur E. Uhe, and his student assistant, Stanley Hughart, the Whitworth Band held weekly music sessions in the reception room. The band, in spite of its heavy schedule, managed to give excellent performances at several football games, chapel programs, and May Day Festival.

Members of the band and the instruments which they play are as follows: Trumpets, Will Clark, Laurence Peterson, Walt Chapin, Andrew Bloom, Rudy Bradshaw, Ruth Brown, Earl Snyder; trombone, Richard Eddy; alto horn, Margaret Lindau; sousaphone, Lee Rodkey; drums, Sam Smith and Everett Scott; saxophone, Charles Hoyt; clarinets, Stanley Hughart, Robert Ridley, Leonard Richardson; baritone, John Rodkey.



Front row: Hoyt, J. Goodsell, S. Smith, E. Scott, Ridley
Second row: Bradshaw, Clark, Bloom, Brown, L. Peterson, Snyder, Bunkelman, Uhe
Back row: Chapin, Lindau, L. Rodkey, J. Rodkey, L. Richardson, Hughart



*Front row: Howes, Muench, Sparrow, Law, Rappe, J. Wolfe
Back row: Andrews, Bailey, Hoppe, DeArmand, Blumhagen,
Nelson, Baugh, J. Casey*

Philadelphians

As a society of young men entering the ministry, the Philadelphian group serves a twofold purpose. Its object is not only to furnish the college with Christian service but also to offer fellowship to all future ministers. During the year, the Philadelphians participated in many activities. The members served on gospel teams, worked as substitutes for pastors, organized chapel programs, and strove for Christian emphasis on the campus. The activities of the Philadelphians during this year of the Golden Anniversary included arranging the plans for the Men's Conference at Camp Cowles on Diamond Lake in conjunction with the "W" Club. After the Home-coming Banquet, a party was held for its members and friends at the home of Bill Hoppe.

Officers that directed the group this year were: President, Joe Wolfe; vice-president, Milton DeArmand; secretary-treasurer, Roy Howes; and faculty adviser, Dr. J. W. Counterline.



Front row: L. Rodkey, Unti, Brault, Moos, Ruby, Blumhagen, Wotring
Second row: Carey, L. Smith, J. Peterson, Boughton, Brown, Hess,
 Teeter, G. Peterson, Boyle, B. Miller
Third row: Lord, Lamparter, Trevitt, C. Hansen, Gilman, Jacobson,
 L. Wolfe, Larson, Hoff, DeFoe, Mount, Olson, M. Neustel,
 Bunkelman, N. Richardson
Back row: J. Rodkey, Blanford, Dougald Robinson, Bassford, Chapin,
 Muench, J. Hook, Potter, L. Hook, Blaisdell, J. Wolfe

Christian Endeavor

The work of the Christian Endeavor Society at Whitworth College was particularly inspiring this year. Under the leadership of the following officers, the group did much to benefit the spiritual life of the campus: President, Rex Blumhagen; vice-president, Ruth Brown; secretary, Martha Neustel; treasurer, Ruth DeFoe; and adviser, Miss Marion R. Jenkins. Dorathea Teeter served as chairman of the devotional committee; and John Rodkey, chairman of the recreation committee. John Hook and Joe Wolfe acted as chairmen of the music and the missionary committees respectively.

To uphold Christian life on the campus, the Christian Endeavor held meetings every Sunday evening in the reception room. Prayer meetings on Wednesday nights were another feature of their religious program.

Activities of the society consisted of the preparation of a special chapel program during Christian Endeavor Week, a Pre-Easter Communion service, and an annual spring picnic. The yearly Christmas gift of the members of the Christian Endeavor was the purchase of Bibles for the Chinese Mission of Spokane.



Front row: Schmirler, G. Peterson, Jones, Bunkelman, Gloria Thompson,
Lindau, P. Miller, McLeod, Bloom
Back row: W. Peterson, Eaton, Brault, J. Goodsell, Unti, B. Miller,
Bailey, Coleman, Blaisdell, Muench

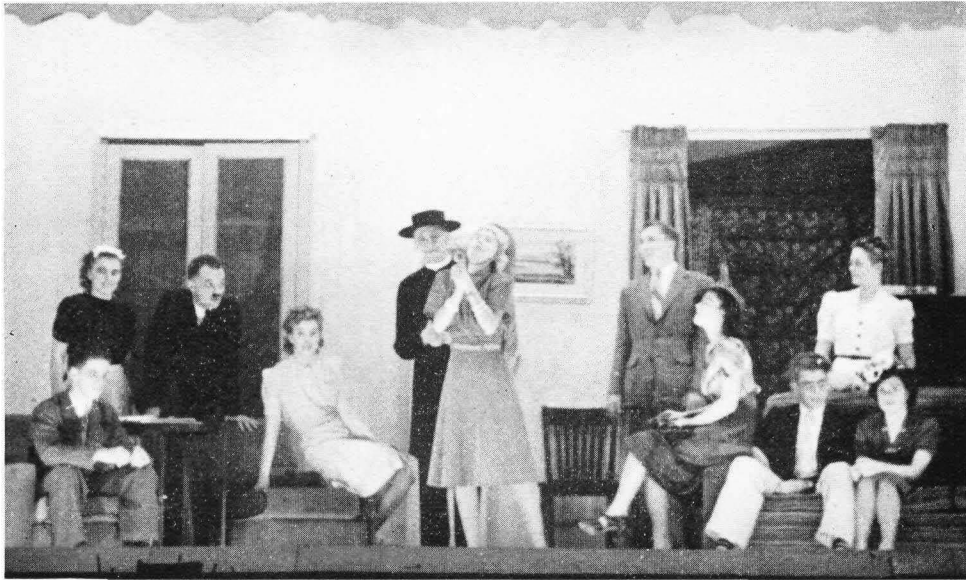
Whitworth Players

The Whitworth Players, organized for all students interested in dramatics, offered several satisfactory productions during the year 1939-1940. In order to raise funds for future productions, the Players featured the "Covered Wagon Inn" early in October. This was closely followed by the successful presentation of the customary Home-coming play, "Nothing But the Truth."

The activity for December was the joint Christmas party and Initiation at the Indian Canyon Club House. Nine initiates became active members. The next endeavor of the group was the Easter play, "The Alabaster Box," given on Palm Sunday. The play was so deeply inspiring that it was later repeated at Lewis and Clark High School.

About this time, the Players became interested in radio work, participating in a series of plays by Whitworth students over KHQ. The commencement play "First Lady," the final production, was given in honor of the graduating seniors.

"Nothing But the Truth"



Eaton, Ludwig, Coleman, Jones, Morgareidge, Gloria Thompson, Munroe,
Goudzward, W. Peterson, B. Miller, Lindau

"First Lady"



Front row: Muench, Lamparter, B. Miller, Lindau, Eaton
Second row: Coleman, Gloria Thompson, Mount, Jones, R. Goodsell
Back row: Reed, Hunter, Olmstead, R. Thompson



Front row: J. Casey, Blumhagen, Moos, Richter, Nelson
Second row: Blanford, L. Rodkey, McCreary, Gilman, Jacobson, Larson,
 Teeter, G. Peterson, Boyle, Mount, Wilson, Ruby
Third row: Thorndike, Gibbs, M. Casey, Boughton, Bunkelman, Lamparter,
 Trevitt, Brown, L. Wolfe, Hess, DeFoe, Hunter, R. Baldwin, Olson, Joss,
 Geraldine Hawley, M. Neustel, Sparrow
Back row: Wikstrom, E. Scott, Hoppe, J. Rodkey, Bassford, Dougald
 Robinson, Muench, Potter, Howes, Rappe, Blaisdell, J. Wolfe, Wotring

Volunteer Fellowship

Maintained for all students who desire to join in Christian fellowship and service, the Volunteer Fellowship plays an important part in the spiritual life of Whitworth. Through the efforts of these officers, the Fellowship completed a very satisfactory year: President, Marjorie Boughton; vice-president, Eugene Nelson; secretary, Verna Bunkelman; treasurer, Roy Howes.

Another very necessary branch of authority, the Chapel Committee, was headed by Eugene Nelson, who planned all the chapel programs.

During the college year, the Fellowship completed many projects, including the organization and dispatch of twelve gospel teams to outlying churches and cities. New features of the devotional program were the special prayer meetings and discussion groups which met every Monday after chapel. The retreat in the fall and a picnic in the spring were among the social activities of the Volunteer Fellowship.



Front row: H. Carlson, Riek, Joss, Logerstrom, Harrison, Nozaki, Boughton
Second row: C. Hansen, Gilman, Jacobson, Schoefield, Lord, Lamparter,
 Fay, Brown
Third row: Thorndike, Remmers, Geraldine Hawley, P. Miller, DeFoe,
 L. Wolfe, Tobie, Genevieve Thompson, G. Peterson, S. Hawley
Back row: Schell, Gladys Hawley, Skeels, Waddell, Larson, M. Neustel,
 L. Smith, Jones, M. L. Smith

Alpha Beta

Open to any woman on the campus, Alpha Beta aims to create more interest in the field of home economics. The club is one of the most active in the college and has been responsible for many improvements in the Home Economics Building.

Tami Nozaki, president of Alpha Beta, headed a very able group of officers. Her cabinet consisted of the following members: Vice-president, Arline Fay; secretary, Marjorie Boughton; and treasurer, Helen Lamparter. Adviser for the club was Miss Charlotte Logerstrom.

The activities of the organization were both successful and numerous. One of their first functions was the formal initiation held in October. Then followed a series of three roller-skating parties, sponsored by Alpha Beta. February 21 heralded the joint Fireside and Kitchen Shower for the Home Economics Building. The activities of Alpha Beta culminated in its most important social event of the year, the formal Spring Banquet.



Front row: DeFoe, Hess, Trevitt, Boughton, Brown, G. Peterson, Boyle, B. Miller
Second row: Cook, Bunkelman, L. Wolfe, Lamparter, Lord, Duff, Olson, Hoff, Puckett,
 Gilman, C. Hansen, Mount, Larson, Jenkins
Back row: Jones, Bagdon, J. Peterson, Tobie, Genevieve Thompson, Purcell, M. L. Emith,
 L. Smith, Jacobson, Carrel

Sefelo

Sefelo, the women's dormitory society, was under the leadership of two sets of officers during the past year. Officers for the fall semester were: President, Harriet Bagdon; vice-president, Janice Peterson; secretary, Ruth Brown; treasurer, Velda Puckett; social chairman, Mary Virginia Mount. At the beginning of the spring semester, the following new officers were installed: President, Lenora Lord; vice-president, Norma Hoff; secretary, Julia Olson; and treasurer, Mary Adaline Cook. Martha Lee Tobie, Wata Jones, and Joanne Gilman served as house chairman, social chairman, and committee chairman respectively.

Through the co-operation of the leaders and the members of the Women's Dorms, Sefelo completed a series of outstanding social events. The Women's Open Dorm and the Christmas party were successful forerunners for the traditional Heart Sister Week and the Mothers' Tea. Another regular function of Sefelo was the presentation of the monthly birthday dinners in co-operation with Alpha Chi.

Directors for Sefelo this year were Miss Marion R. Jenkins, house mother at McMillan Hall, and Mrs. Anna J. Carrel, house mother for Ballard Hall.

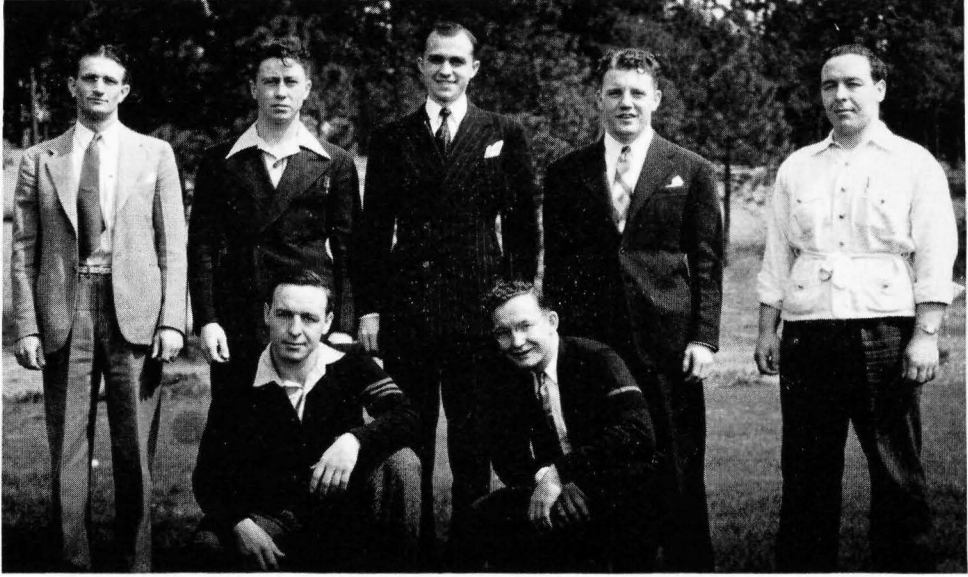
Alpha Chi

The success of Alpha Chi, old and honored organization of the Men's Dorm, was due in no small part to the wise selection of officers who headed the dorm government for two semesters. Quarterly managers were Sydney Eaton, first quarter; Robert Barowski, second quarter; Edgar Bassford, third quarter; and Joe Feathers, fourth quarter. Robert Stephey and Nat Edenso served as secretaries for the first and second semesters respectively. The position of semester treasurer was well filled by John Hook and John Law. The organization was under the guidance of the resident adviser, Professor J. A. Carlson.

Alpha Chi helped to arrange and conduct the birthday dinners which honored members of the dorm. Other functions included the dormitory initiation, the Christmas party, and vacation celebrations. The high spot of the social program was the Men's Open Dorm, on March 16. Greatly enjoyed by all who attended, this evening's entertainment culminated in the selection of Miss Roberta Rubens as the "Sweetheart of Alpha Chi."



Front row: Feathers, Law, Barowski, Ruby, Hanford, Baugh, J. Rodkey
Second row: N. Richardson, Chapin, Roth, Brault, L. Hook, J. Hook, Eaton, Blaisdell
Third row: Edenso, Nelson, Bassford, Muench, Dougald Robinson, Blanford, Ridley, Unti
Back row: Burnett, Sauer, Potter, Sowell, L. Richardson, MacIntyre, Fisher



*Front row: L. Richardson, Unti
Back row: Nelson, L. Hook, Muench, Bassford, N. Richardson*

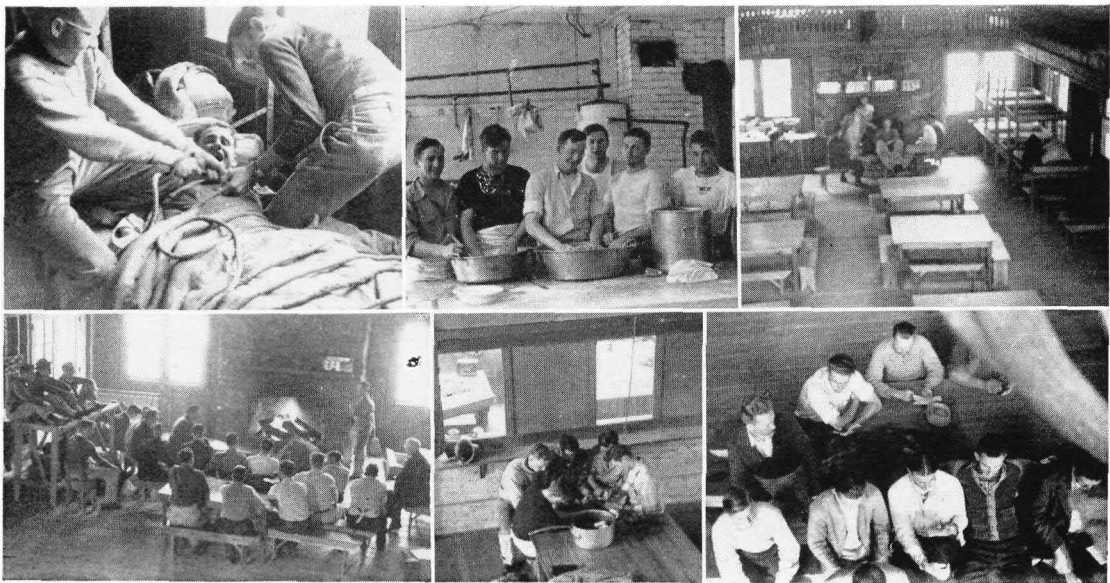
Men's Conference

Sponsored by the "W" Club, this year's Men's Conference centered around the theme taken from Colossians 2:3, "in whom are hid all the treasures of wisdom and knowledge." The conference speakers, the Reverend Wilbur Scafe, James Forrester, Dr. J. M. Finney of Spokane, the Reverend Harold E. Penhalurick of Millwood, and the Reverend Paul Koper of Davenport, all fully developed and enriched the inspiring theme.

The conference, occurring once more at Camp Cowles on Diamond Lake from April 26 to 28, was one of the finest meetings in the history of Whitworth. Not only

did the men who attended enjoy the beautiful surroundings, the rousing soft-ball games, and the boating, but also they thoroughly appreciated the splendid messages of conference speakers.

The very satisfactory memory that every man carried home from conference was due to the work of the following persons: General chairman, David MacIntyre; program, Eugene Nelson; music, John Rodkey; promotional, Edgar Bassford; transportation, Lewis Kirsch; property, John Fisher, finance, Norman Richardson; recreation, Leonard Richardson. General co-ordinator was Bill Pond and the cook was Louis Stannard.





*Front row: Brown, Bagdon, J. Peterson, Gladys Hawley
Second row: Hess, P. Miller, Lord
Back row: Buck, Koper, Jenkins*

Women's Conference

The Women's Conference at Camp Cowles on Diamond Lake was an experience that every girl who attended will long remember. The time of year was ideal for such a gathering — warm, sunny October days that were just made for relaxing on the beach or even venturing into the water for a swim. Those in charge of the conference had so planned it that there was something to interest every woman. It was mainly due to the efforts of the following persons that the conference was such a memorable one: General chairman, Mary Koper; vice-chairman and finance, Gladys Hawley; music, Janice Peterson; program, Mary Virginia Mount; secretary, Frances Hess; commissary, Pauline Miller; registration,

Mary Nell Buck; transportation, Lenora Lord; recreation, Ruth Brown; decorations, Harriet Bagdon.

Yet there were other things that contributed to the harmony of the entire gathering. The speakers — Mrs. Davis Weyerhauser of Tacoma, Mrs. Luther Plankenhorn of Sprague, Miss Marion R. Jenkins, Mrs. Anna J. Carrel, and Miss Estella Baldwin of Whitworth—made every woman fully realize the significance of the theme, "Follow Me."

Digging deep into the food prepared by Mrs. Davidson, hiking through bright October woods, napping on the beach, and listening to the nightly fireside talks — all these features were a wonderful and an unforgettable part of Women's Conference.





Bassford, Cook, MacIntyre, Buck, Bradshaw, Boyle, E. Scott, Lord, Unti, Mount

Montana Club

That good things come in small packages is the belief of the Montana Club. Although the club boasts only eleven members, it has been successful in its desire to promote interest in Montana on the campus. The eleven members have enjoyed several parties during the year. This band of loyal Montanans include Mary Virginia Mount, David MacIntyre, Lenora Lord, Mary Adaline Cook, Francis Unti, Everett Scott, Mary Nell Buck, Rudy Bradshaw, Eldon Johnson, Edgar Bassford, and the adviser, Mrs. Lilian G. Peck.



Blanford, DeArmand, Klein, Howes, Mount, Blumhagen, W. Peterson, Muench

Debate Squad

Members of the Whitworth debate team "did themselves proud" this year. Their first mark of distinction came with the placing of Mary Virginia Mount as first in the Senior Women's Oratory at Stockton, California. A group of three debaters, Eugene Muench, Mary Virginia Mount, and Earl Klein, attended the Western Association of Teachers of Speech Tournament at Stockton.

The competition at Moscow, Idaho, furnished another opportunity for the forensics students to test their mettle. The teams included in this contest were: Roy Howes and Walter Peterson, Rex Blumhagen and Milton DeArmand, Steve Martin and Carl Blanford.

The tournament at Linfield, Oregon, was another great event for our orators. Selected by Dr. LaVerne K. Bowersox, debate coach, the following men's teams were sent: Earl Klein and Eugene Muench, William Gold and Walter Peterson, Roy Howes and Carl Blanford.

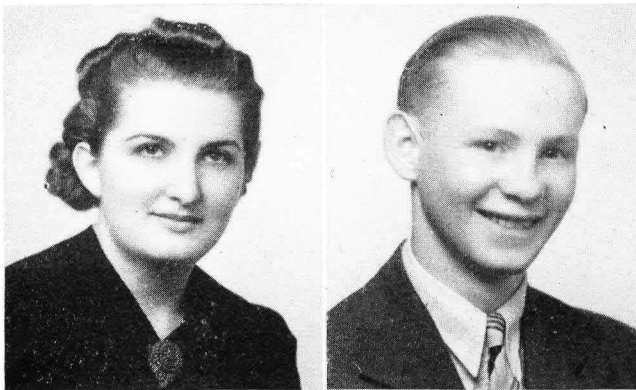


Front row: M. Casey, Barowski, Bassford, Martin, Stephey, Jacobson
Second row: L. Rodkey, Law, Blanford, Mount, Magill, Wikstrom, Ruby
Third row: Kirkpatrick, S. Hawley, Hand, Lamparter, Tobie, Ludwig, Hunter, Dexter, Waddell,
 DeFoe, L. Wolfe, Gloria Thompson, Harrison, McCreary, Skeels
Back row: Chatterton, Baugh, J. Rodkey, Clement, Sparrow, R. Goodsell, Eaton, Feathers

Whitworthian

Aided by the selection of a very fine staff, the WHITWORTHIAN rose to heights of great accomplishment in the fiftieth year of the founding of the college. The outstanding accomplishment of the year was the acquisition of a new hand printing press.

The staff of the WHITWORTHIAN for the year 1939-40 were: Editor, Mary Virginia Mount; associate editor, Paul Wikstrom; sports editor, Robert Barowski; assistant sports editor, Edgar Bassford; feature editor, Gloria Thompson; women's sports, Martha Lee Tobie; society editor, Helen Lamparter; copy readers, Russell Braden, Helen Waddell, Ruth DeFoe; typist, Blanche Harrison; and reporters, members of the journalism class. Miss Helen Magill was adviser.





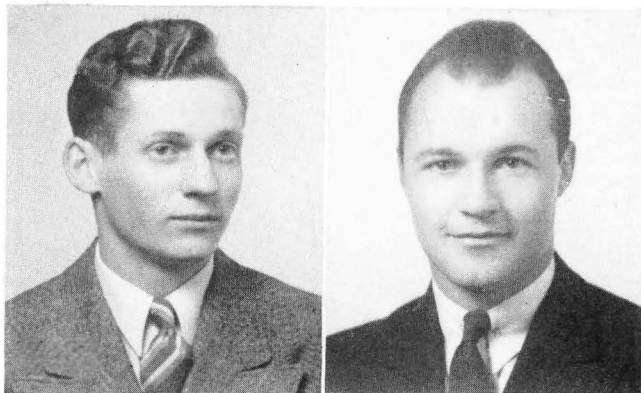
Seated: Bailey, Magill, Coleman
Back row: Hand, Hoyt, Gloria Thompson, Howes, Blakemore, Martin, Bassford, Blumhagen

Natsihi

The editorial staff of the 1940 NATSIHI made an earnest endeavor to produce an annual worthy of their predecessors. A double responsibility rested upon their shoulders, because the theme was connected with the Golden Anniversary of Whitworth and its progress during the last fifty years.

Members of the editorial staff included: Editor, Douglas Coleman; associate editor, Rex Blumhagen; activities editor, Gloria Thompson; sports editor, Edgar Bassford; women's sports editor, Marjorie Hand; art editor, Milburn Blakemore; snapshot editor, Charles Hoyt; associate snapshot editor, Steven Martin.

The responsibility of making the NATSIHI a financial success rested on the shoulders of Dorsey Bailey, business manager, and his assistant, Roy Howes. The advisers were Miss Helen Magill and Dr. F. T. Hardwick.





Front row: Unti, Bassford, Fisher
Second row: Barowski, L. Richardson, MacIntyre, Blakemore, L. Hook,
 N. Richardson
Third row: Boni, Lindgren, Sauer, Scarpelli, Chatterton, L. Stannard,
 Rosenquist, Carman
Back row: W. Scott, J. Rodkey, Feathers, Robert Johnson, J. Hook, Burnett,
 L. Hansen, Kirsch

“W” Club

The “W” Club, the men’s sports letter organization, has operated a busy program of events for the year. It started the college season with the traditional initiation of the frosh. Later, it fostered such events as the “W” Club Carnival, the Men’s Conference, and the Faculty-Invincible Basketball series, besides several night meetings. The Club is comprised of major-letter winners; its principal aim is the promotion of athletics on the campus. Officers for the past year include: Dave MacIntyre, president; Bill Pond, vice-president; Werner Rosenquist, secretary; and LeRoy Hook, treasurer. Prof. B. C. Neustel is the club adviser.



Seated: Buck, Harrison, Bagdon, G. Peterson, Carrel, M. L. Smith,
 Lord, Bunkelman, Toole
Back row: Cook, Fay, Lamparter, Genevieve Thompson, Hess,
 Dexter, Mount, Hunter, Teeter, Peers, Brown, Tobie

W. A. A.

Completing a year of successful activity, the W.A.A. has for its officers: Loretta Stanford, president; Ruth Brown, vice-president; Marjorie Seidel, first semester secretary; Eleanor Schell, second semester secretary; and Lillian Schoefield, treasurer. Helen Lamparter had charge of the committee which initiated the freshman women during the first three weeks of the fall semester. The tea for the freshman women was under the direction of Mary Virginia Mount, with Eleanor Schell assisting.

Because of the bad weather, the gypsy feed was held in the freshman town women's room last October. The April frolic, however, took place on a sunny afternoon and was enjoyed at the W.A.A. cabin. Volleyball during the winter and baseball in the spring were in charge of Martha Lee Tobie and Eleanor Schell, respectively. The Football Banquet was sponsored by the W.A.A., under the direction of Dorathea Teeter and Mary Koper. May Day is the crowning event of the year for this organization; Miss Jenkins was May Day general chairman.

May Princesses



*Front row: Koper, Brown, J. Peterson
Back row: Fay, Tobie, Stanford, Lord*



QUEEN MARY NELL I

May Festival

As the fanfare of royal trumpets died away in the distance, a bevy of beautiful girls crossed the Whitworth greensward in a double line to form an arch with flower-decked hoops. This lovely spectacle heralded the approach of the court of Queen Mary Nell I. First came the princesses attired in dainty pastel formals, followed by the maid of honor, Janice Peterson. The petite flower girl and the crown bearer preceded the royal party. Clad in white formal and a blue velvet cloak with a sweeping train, Queen Mary Nell, with her court, approached her flower throne. The procession, with the May Duke, Dougald Robinson, at the end of the royal promenade, clustered about the dais while the May Queen mounted her throne.

The long-awaited moment finally reached, the May Duke placed a queenly crown on the head of our gracious ruler. Surrounded by her princesses, Arline Faye, Ruth Brown, Martha Lee Tobie, Loretta Stanford, Lenora Lord, and Mary Koper, Queen Mary Nell read her traditional May Day Proclamation, which invited all spectators to join in the mirth and revelry.

Next followed a delightful program. Among the events included on this program were: Morris Dance, archery exhibition, traditional Japanese dance, numbers by the women's sextet and Whitworth Chorus, vocal solos, numbers by the Whitworth grade school rhythm band, and the Maypole dance.

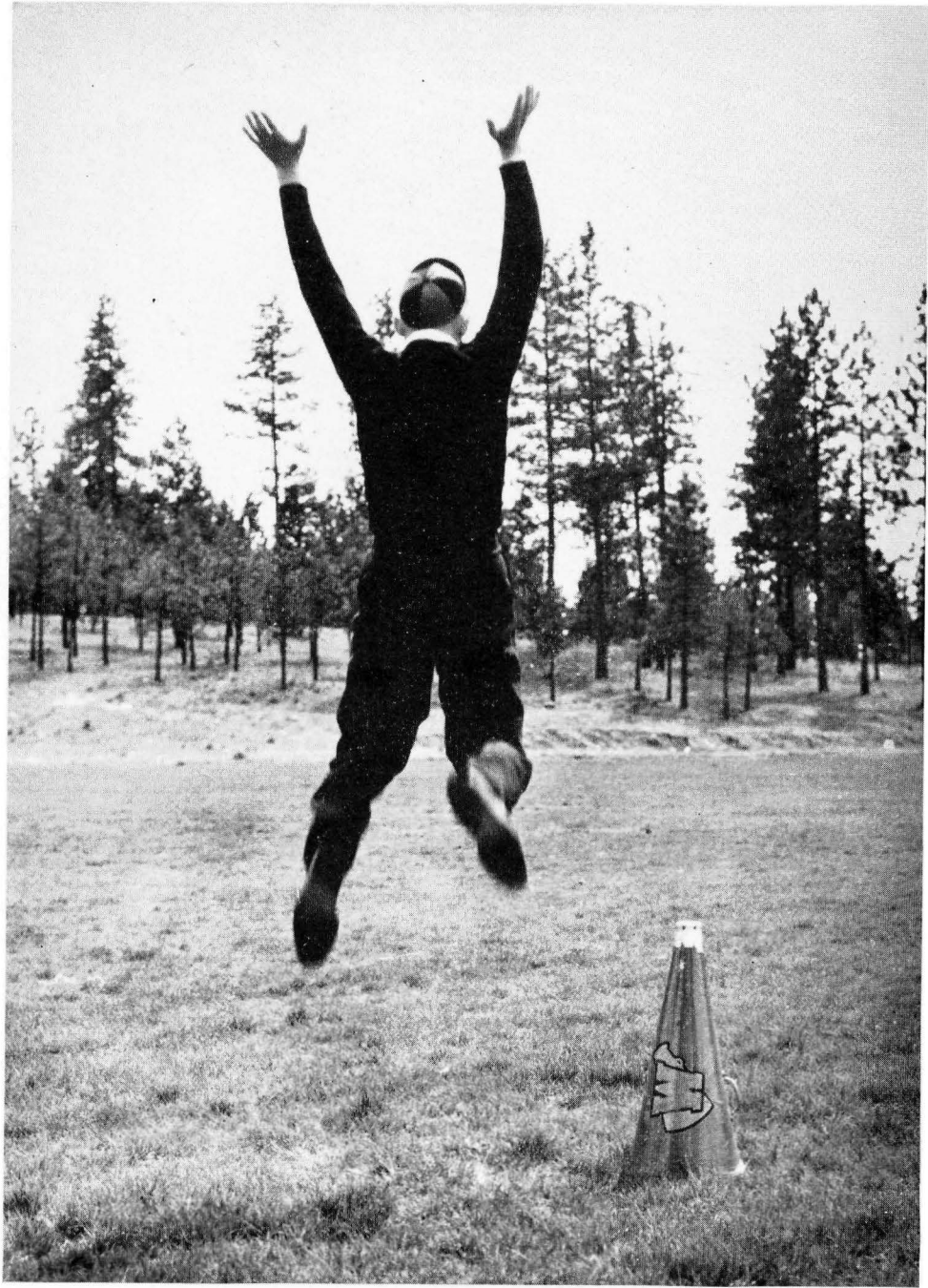
After the program, the Queen and her court gracefully retraced their steps in the Processional to the strains of the orchestra. As the final act of a very beautiful afternoon, Queen Mary Nell I and her court received their friends in an especially prepared bower.



*Queen Mary Nell Buck and Duke Dougald Robinson lead the procession
of the May Day Festival.
Scene of the Court of Queen Mary Nell I.*

Athletics





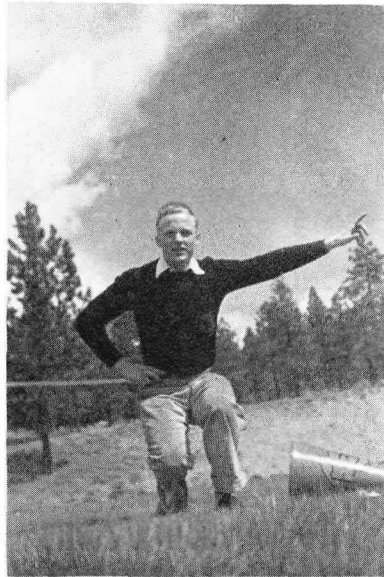


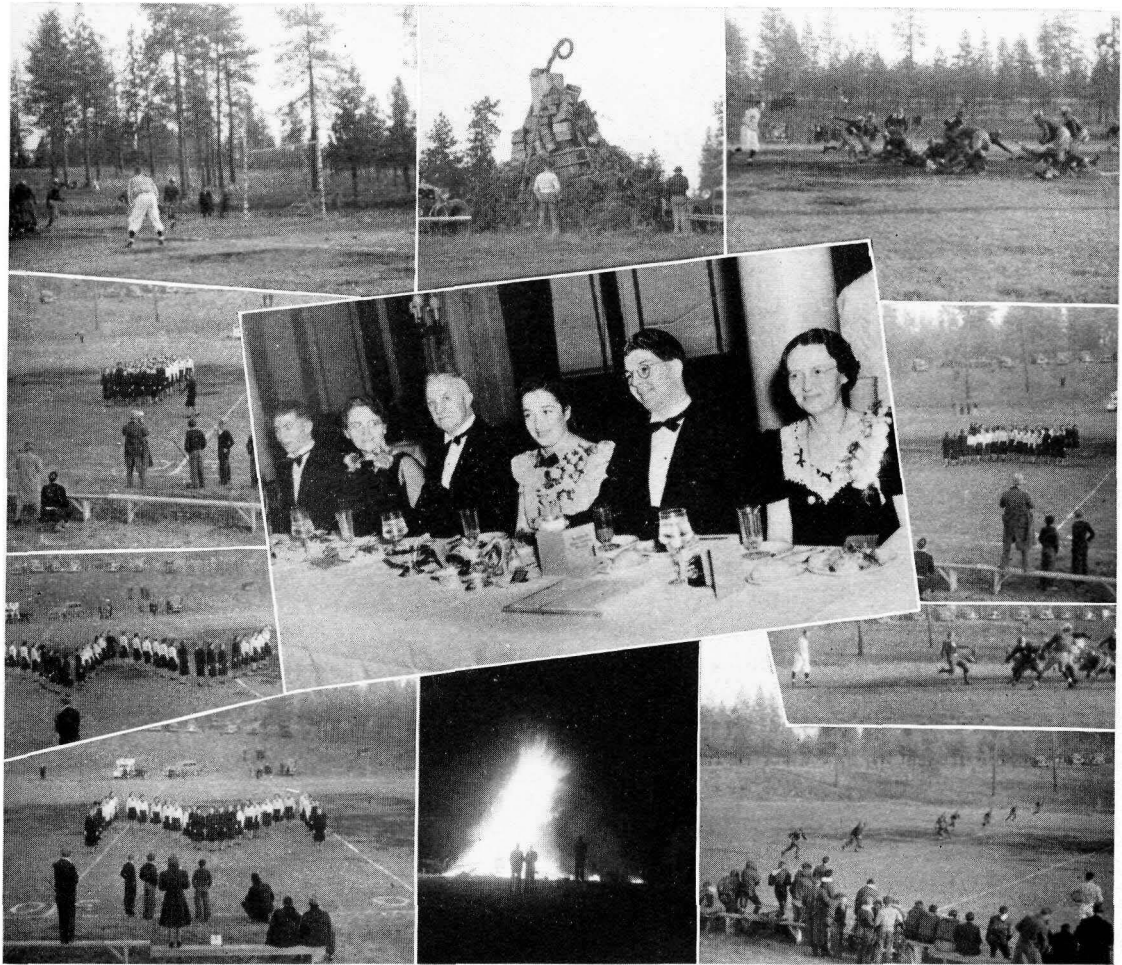
Coach Stannard

Coach Gerald Stannard deserves much credit for his part in directing the progress of athletics at Whitworth. "Jerry" is well known for his fighting Pirate teams. His ability as a coach, that ready laughter, and his love for clean sport—these are a few of the outstanding characteristics that have endeared Coach "Jerry" Stannard to his men and to all the students and friends of Whitworth College.

Cheer Leader

Bill Richter led the Whitworth cheering sections through this year's sport festivities. Bill has plenty of what it takes when it comes to drawing real pep from the Pirate backers.





Home-coming

Two hundred and forty miners struck a vein of gold at the forty-ninth annual Whitworth Home-coming Banquet, November 18, in the Isabella Room of the Davenport Hotel. Celebration of the victory over the Montana School of Mines' football squad made the occasion a joyous one for the alumni, students, faculty members, and friends of the college.

William L. McEachran gave the invocation, Lee Rodkey next welcomed the alumni, and Charles Frazier answered the address of welcome. Negro spirituals were rendered by Bob Johnson, and the Mixed Quartet pleased everyone with popular numbers. A trumpet trio composed of Walter Chapin, Andrew Bloom, and Will Clark lent variety to the program.

"A Gold Nugget" was the theme of Dr. Hardwick's speech, and James Forrester told of the ideals and aims of Whitworth, in "A Vein of Gold."

The Football Season

Starting the 1939 football season with the largest Pirate squad ever, Coach "Jerry" Stannard set to work building a team that was slated to "go places."

The first game was played with Whitman College. Out to erase a stinging defeat of the previous year, the Whitman Missionaries crashed through the Whitworth line for two touchdowns to win by a 14-0 score.

It was in the Gonzaga Stadium against the Lewiston Normal Loggers that the Pirates displayed their true qualities. Blasting their way with successive drives toward the Normal's goal, the Pirates finally ploughed through to tie the count 7-7, after the Loggers had scored once in the second quarter.

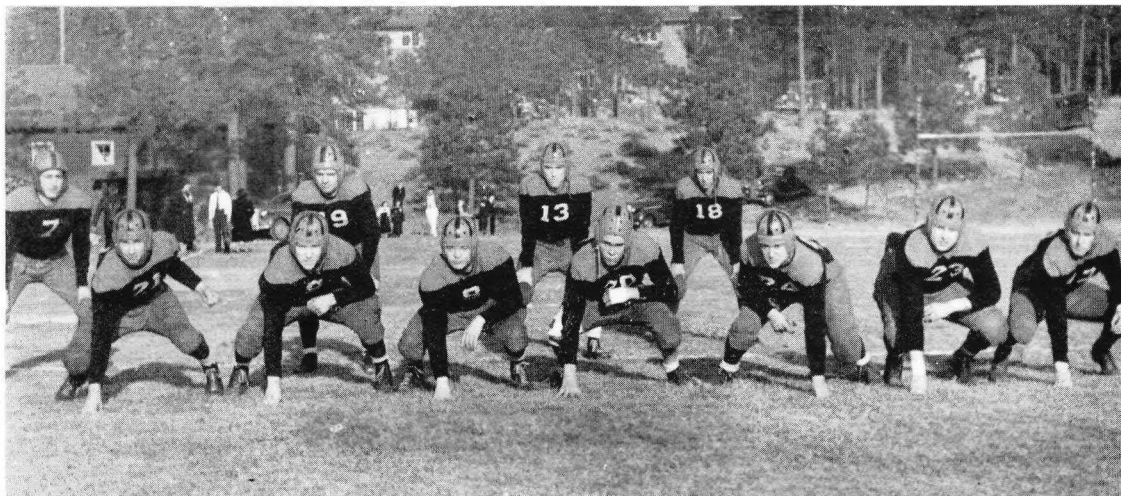
Slated to lose by a large margin, the Pirates clashed with the College of Puget Sound in the huge horseshoe stadium in Tacoma. The Whitworth Pirates not only battled the Logger eleven to a standstill but spent most of the game pounding the Puget Sound goal line, the game ending in a scoreless tie.

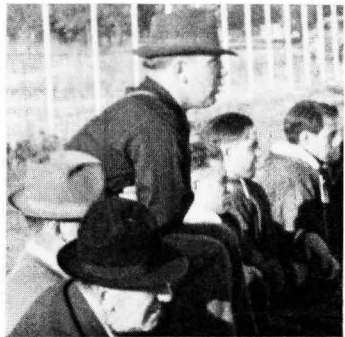
An injury-riddled Pirate eleven met the heavy Eastern Washington College of Education Varsity the following week-end. Whitworth actually outplayed the Savages for the first quarter. Then with their defences slowly crumbling before heavier Cheney team, the Pirates allowed the power of the Teachers' grid machine to sweep through for a 33-0 victory.

Running into a streak of bad luck, the Pirates (favored to win) lost to Carroll College at Helena to the tune of 6-4.

In the second game with the Lewiston Loggers, the Teachers tallied twice before Whitworth finally settled down to score their only touchdown. The final score was 14-7 in favor of Lewiston.

As a feature of a most successful Home-coming, the Pirates smashed their way to win over Montana State School of Mines. Whitworth scored first, following a sustained drive downfield. Late in the third quarter the Miners completed a long pass to score their only touchdown, but failed to convert, the score being 7-6 in the Pirates' favor at the final gun.







First row: L. Hook, E. Rost, Weaver

Second row: Bassford, Scarpelli, Kirsch, Carman, Boni,
MacIntyre, Tanneberg

Third row: Fisher, Soehren, Randolph, Ralston, L. Richardson,
Tower, Grigware, Lindgren, Buckley

Fourth row: Blakemore, L. Stannard, Feathers, H. Olson, Unti,
Barowski, Chatterton

Fifth row: Moyer, Russell Johnson, Sauer



Ralston, Russell Johnson

Football Banquet

At the Women's Athletic Club on December 9, the football team was honored at a banquet sponsored by the W.A.A. Acting as toastmistress was Miss Alice McDonald; official welcome was given by Loretta Stanford. Mary Koper and James Goodsell sang, and Barbara Miller dramatized a mirth-provoking reading. Coach Gerald Stannard praised the team for its fine performance during the year and awarded the honorary captaincy to Russell Johnson, by popular vote of the team. Russell and Glenn Ralston shared the honor of receiving the Snider Memorial cup from Professor B. C. Neustel. "Gridiron Memories" were indulged in by Carl Quackenbush, who related tales of former football prowess.

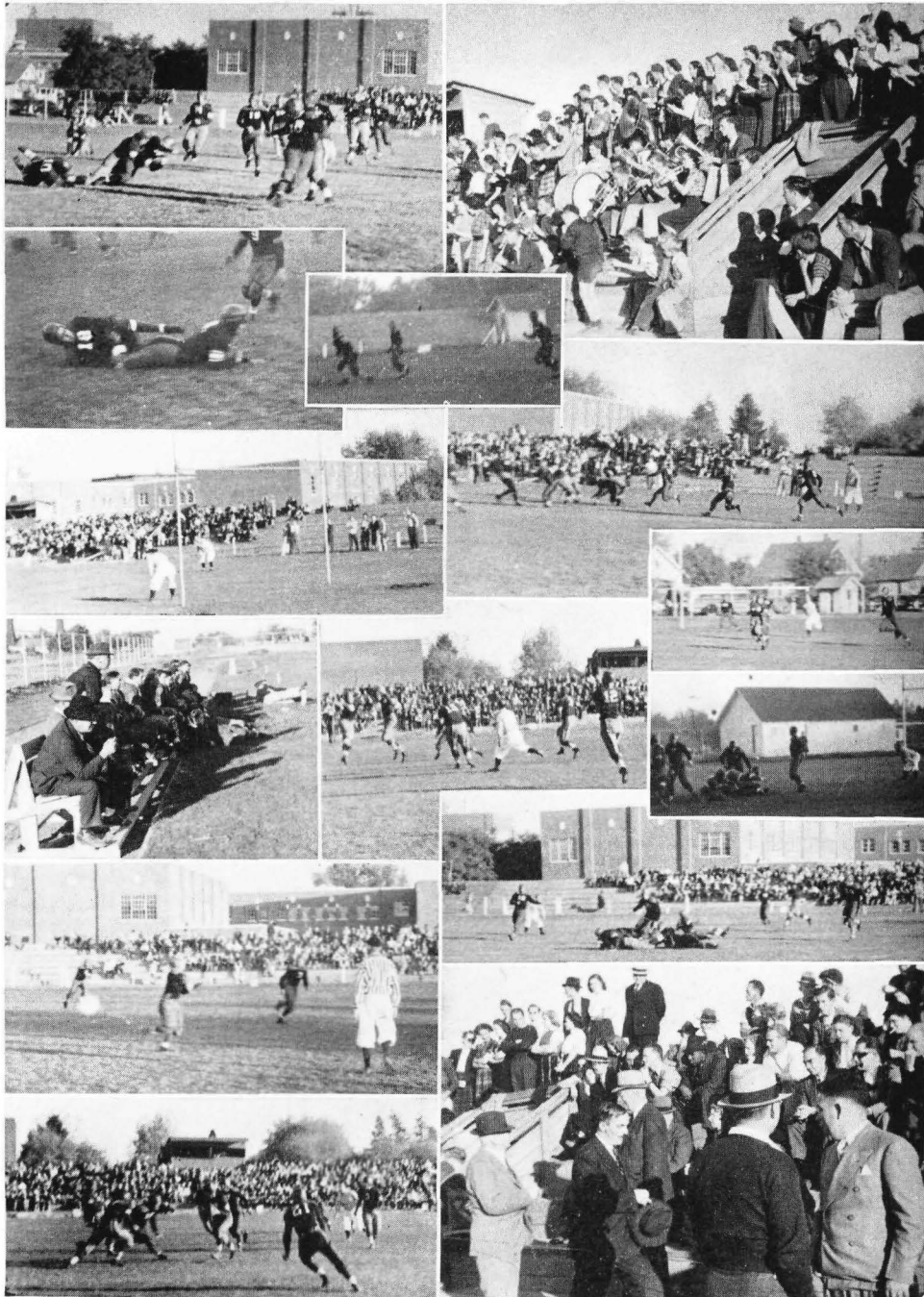




Ralston, Russell Johnson

Football Banquet

At the Women's Athletic Club on December 9, the football team was honored at a banquet sponsored by the W.A.A. Acting as toastmistress was Miss Alice McDonald; official welcome was given by Loretta Stanford. Mary Koper and James Goodsell sang, and Barbara Miller dramatized a mirth-provoking reading. Coach Gerald Stannard praised the team for its fine performance during the year and awarded the honorary captaincy to Russell Johnson, by popular vote of the team. Russell and Glenn Ralston shared the honor of receiving the Snider Memorial cup from Professor B. C. Neustel. "Gridiron Memories" were indulged in by Carl Quackenbush, who related tales of former football prowess.





Seated: G. Stannard, Boni, Sauer, Fisher, J. Rodkey, Lindgren, Kirsch
Back row: L. Hansen, Robert Johnson, Burnett, J. Hook, Blakemore, Unti

Varsity Basketball

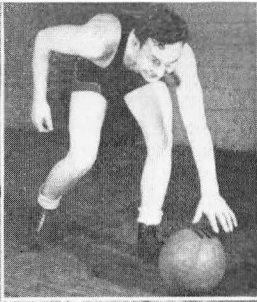
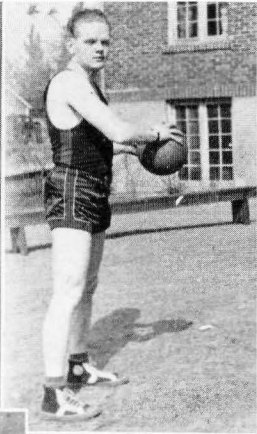
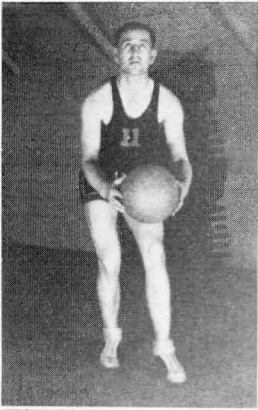
This year's Pirate Basketball team has proved outstanding. The unusual characteristic of the squad was the small stature of the men. With the exception of four members, the entire squad failed to come close to the six-foot mark. Yet speed and adept ball-handling made up for lack in height and proved to be the downfall of most opponents. The playing schedule included games with such teams as Lewiston Normal, Gonzaga Frosh, Eastern Washington College of Education, Coeur d'Alene Junior College, Tau Gamma, Northwest Nazarene, Hillyard Boosters, Y.M.C.A., and Garfield Independents. Hansen, Fisher, and Sauer were the leading scorers.



Front row: Feathers, N. Richardson, L. Richardson, Martin, Moos
Back row: Nelson, Chapin, Snyder, Russell Johnson, Carman, L. Hook, Baugh

Jayvee Basketball

The Whitworth Junior Varsity, coached by Leonard and Norman Richardson, had a highly successful season. This year the Junior Varsity entered into competition with the Spokane Church League teams, and at the end of the season was in the upper half of the league's rating column. LeRoy Hook and Walt Chapin held the scoring honors.



Burnett gets set.

Lindgren bounces a fast one.

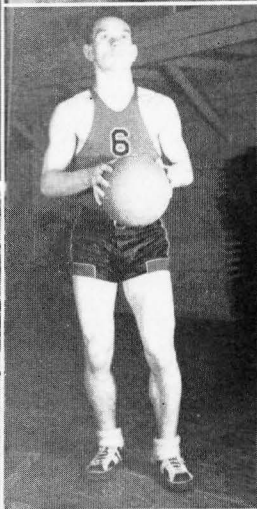
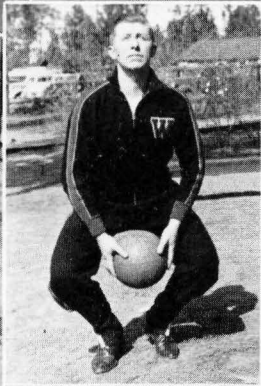
Unti dribbles down the floor.



Hook—"They shall not pass."

Blakemore measures the distance.

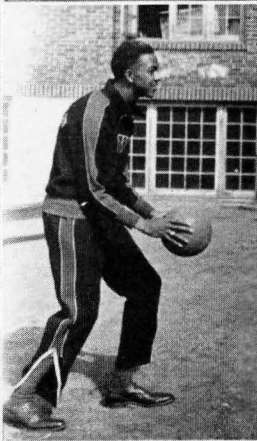
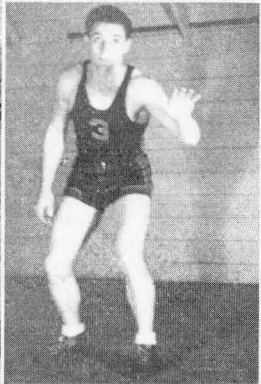
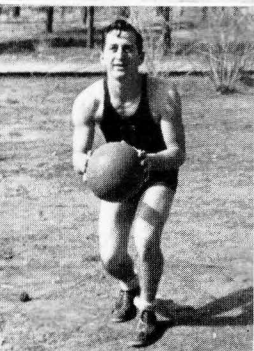
Kirsch "embarks" on a trip.



Hansen tries his luck.

Rodkey takes a "long."

Sauer tries his shooting eye.



Boni lines up two points.

Fisher—check and double-check.

Johnson limbers up.



Gladys Hawley, Boni, G. Stannard, Fisher

Basketball Banquet

On March 9 the sixth annual Basketball Banquet was held by the "W" Club in honor of the basketball team, in the Gold Room of the Desert Hotel. Professor Arthur E. Uhe was the principal speaker, and David MacIntyre acted as master of ceremonies. Two numbers were sung by the Women's Quartet—Eva Carey, Joanne Gilman, Betty Ferrell, and Norma Hoff, with Shirley Jacobson accompanying. Robert Johnson pleased the audience with a vocal solo, and black magic from the expert hand of William Gold made shivers run up and down the backs of the company. Coach Gerald Stannard presented the awards to the team and the honorary captaincy to John Fisher. The most inspirational player of the season, Louis Boni, received the much-coveted Pirette award from Gladys Hawley.



Carey, R. Baldwin, Gloria Thompson, Krause

Badminton

One of the most popular sports, when the weather calls players into the gym, is badminton. Essentially a game of skill, it never ceases to have its full quota of enthusiasts among the women. Learning the sport is not too difficult, and the game can be enjoyed continually. Thanks to the W.A.A., which makes this sport possible by providing racquets, shuttlecocks, and nets, the women are becoming very proficient.

Archery

Grace, power, beauty in every movement—that is archery. As we watch the athletes, we are reminded of Robin Hood, Friar Tuck, and other expert huntsmen of old. In this sport, a high degree of accuracy can be acquired, as witness William Tell, who cleaved in twain the apple on his son's head. It is an entirely different type of activity from the rest of the physical-education program, and is enjoyed by those who like individual as well as team sports.

Two-thirds of the women enrolled in physical education classes are taking archery. Considerable skill is required to adjust the aim from fifty yards to forty yards and then to thirty yards, and to shoot twenty-four arrows from each distance.



Remmers, Riek, Lamparter, Bunkelman



Hunter, S. Hawley, Cook, McCreary

Tennis

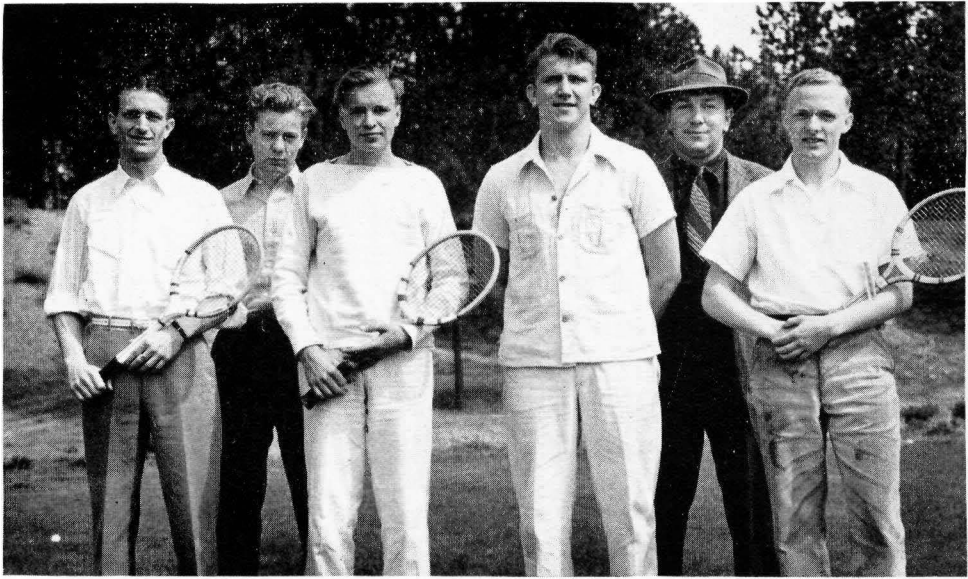
This spring the women's gym classes are busily learning the fundamentals of tennis on the two courts back of the college. Although it is not an intramural sport, this exhilarating outdoor activity is enjoyed by a third of the women enrolled in this semester's classes. Good sportsmanship is imperative when an athlete is playing an opponent, and the game contributes to the development of muscle co-ordination and grace of movement.

Volleyball

On Monday and Wednesday afternoons from 3:30 to 4:15 the gym was packed with women chasing an elusive volleyball. Three athletes who really succeeded in catching the ball and their letter awards were Martha Lee Tobie, Genevieve Thompson, and Mary Adaline Cook. Acting as chairman of this sport sponsored yearly by the W.A.A. is Martha Lee Tobie. Turnouts were continued from the beginning of the fall semester until Christmas vacation called students home.



Kneeling: Trevitt, M. Casey, Harrison, Carey, Lindau
Back row: Puckett, Genevieve Thompson, Krause, Jacobson, Gloria Thompson,
L. Smith, Toole



Nelson, Braden, W. Scott, Blakemore, G. Stannard, Richter

Tennis Team

This year's tennis team has proved to be one of the best racket aggregations in the history of the college. Numbered among its defeated opponents thus far is Gonzaga University. The Pirates have a number of matches yet to play, but the future looks exceedingly bright for a highly successful season.

The team comprises: Wes Scott, a very smooth player with a lot of racket strategy; Mel Blakemore, a last year's ace, who is going strong this season; Gene Nelson, a California lad with plenty of court savvy; Bill Richter, a consistent player; and Jim Munroe, the number one man of the team and one of the best in the city.



Fisher, G. Stannard, L. Hansen, Messex, McInturff, L. Richardson, Sauer

Golf Team

The golf team consists of Lewis Messex, Don McInturff, Ed Rost, Walt Lindgren, and Les Hansen. The season has yet to be completed, but thus far the Pirate Club Swingers have upheld their end of things fairly well in matches with Eastern Washington College of Education and Gonzaga. Other matches have been arranged with near-by colleges.



Seated: Boyle, G. Peterson, Mount, Gladys Hawley, Hand, S. Hawley,
Genevieve Thompson, Tobie
Back row: Feathers, Dougald Robinson, Blakemore, Duane Robinson, Forrester, Nelson

Boot and Saddle Club

Although a newly organized group, the Boot and Saddle Club enjoyed several outings at Tex's Riding Stables (formerly McCollum's). The first group to ride went out on November 4, and the second rode on November 11. During spring vacation, on March 29, a third class ventured forth. One hour on Saturday afternoons was the general time limit, but a few seasoned veterans remained for two-hour stretches. James Forrester acted as club adviser, and arrangements were made by Martha Lee Tobie.

Among those who rode "bucking broncos" are James Forrester, Mr. and Mrs. Duane Robinson, Mr. and Mrs. Harold Olson, Milburn Blakemore, Martha Lee Tobie, Robert Dodds, Geraldine Hawley, Genevieve Thompson, Mary Virginia Mount, Eugene Nelson, Joe Feathers, Gladys Hawley, Shirley Hawley, Mary Boyle, Gladys Peterson, and Marjorie Hand.



Front row: Nelson, Ridley, Snyder, Hughart
Back row: Barowski, Buckley, Potter, J. Casey, Brault, E. Scott, Swanson

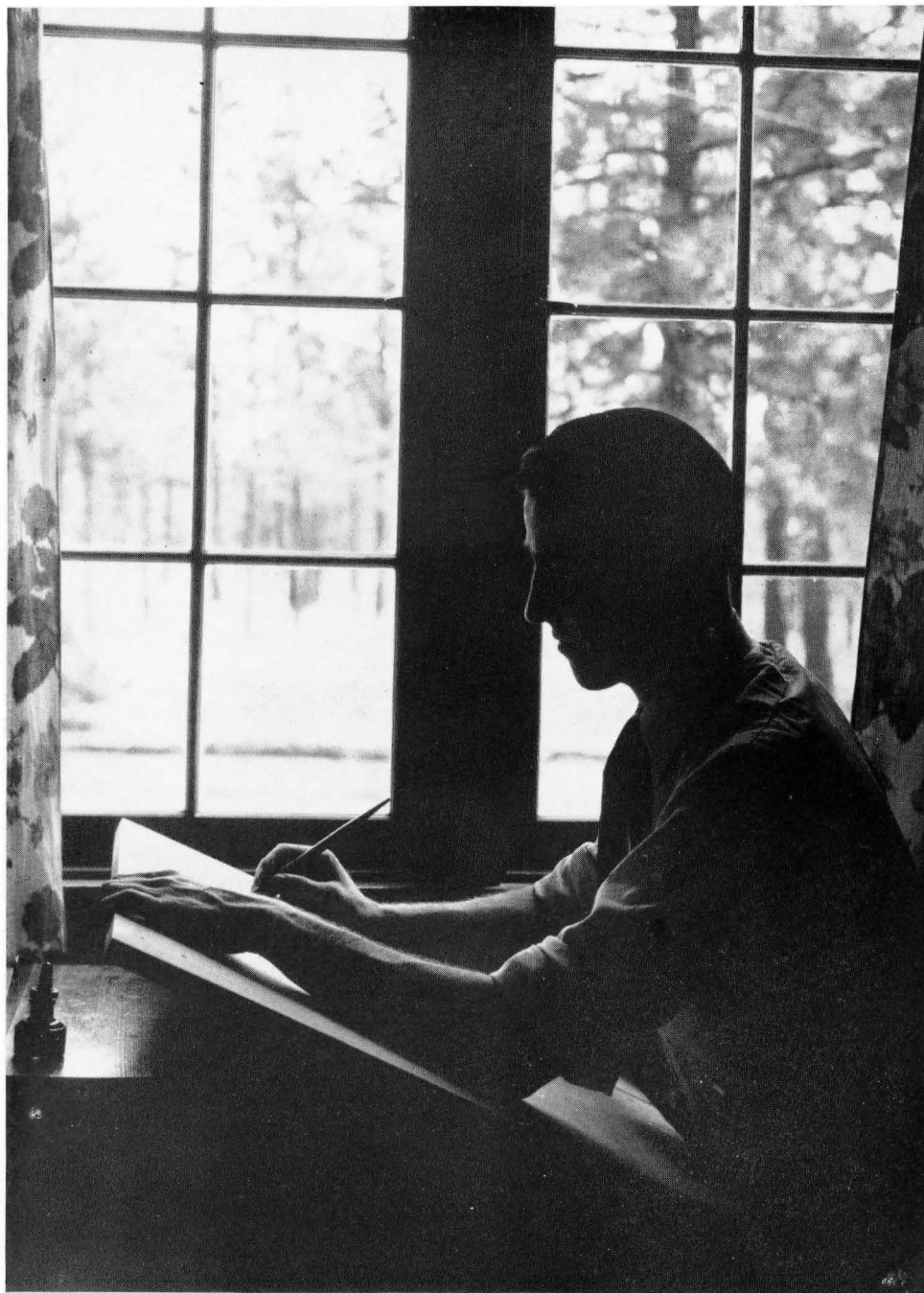
Intramural Sports

For the first time in the history of the college, intramural sports have been introduced on the campus. The result of such a movement was a wave of popular enthusiasm among the students. Basketball and volleyball were the main sports featured.

This new project was received so favorably by the students that already plans are under way to widen the sports setup on the campus next year. Future college teams should see even greater advancements in intramural sports.

Advertising







Printing Service

Fine printing requires craftsmen who have had years of experience in doing small things well. We have men who fill that requirement.

Inland-American
Printing Company

E. 706 Sprague Avenue

Christian's Portraits

"Exquisite But Not Expensive"

We attribute the success of the photographs in
this NATSIHI to the co-operation of the students

Frederick and Sylvia Christian—Spokane Photographers



Compliments of

**Ideal
Laundry**

E. 17 Boone Ave.

S. A. Wylie Alfred W. Carlson

**WYLIE-CARLSON
PRESCRIPTION
DRUGGIST**

Corner Sprague and Wall

Phone Main 1188

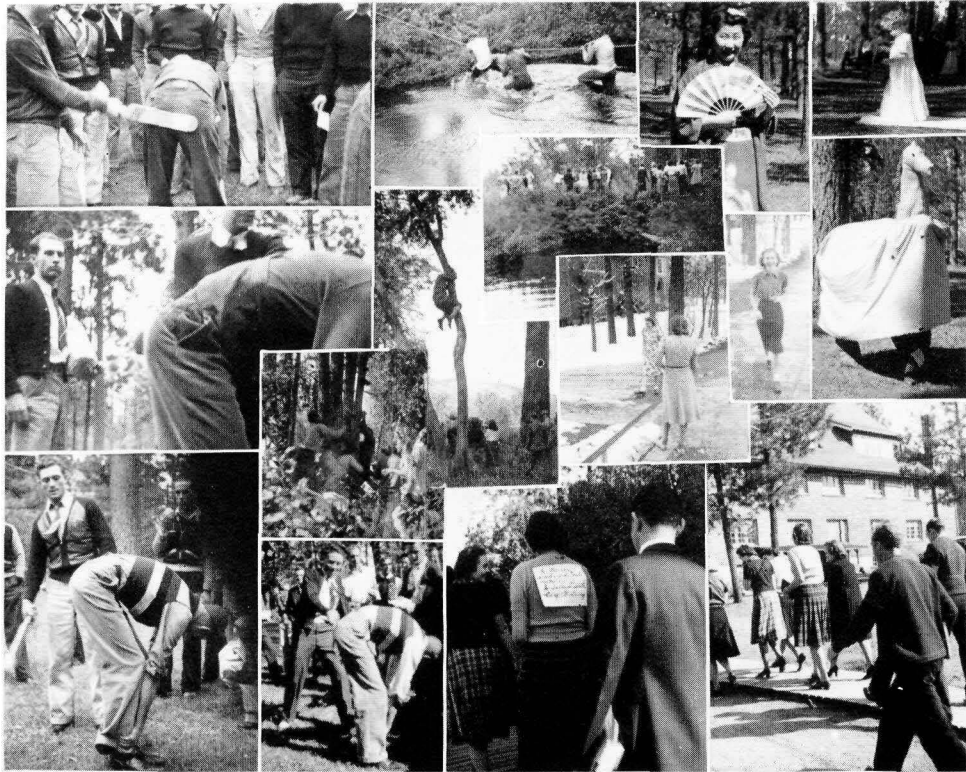
Our Fifty-second Year in
Spokane

**A & K
MARKET**

**Whitworth Service
Station No. 1**

Everything for
Your "Dorm Feed" or Picnic

Ralph R. Llewellyn



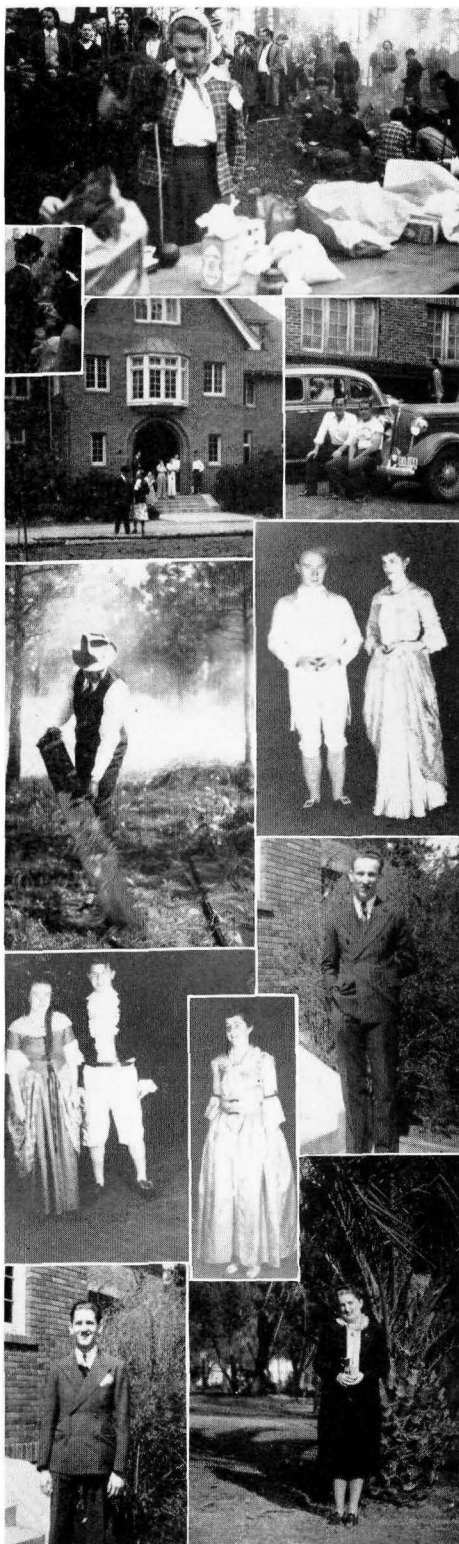
At Your Traveling Service

A safe, fast, comfortable, convenient service that gets you there. To points north or east, take the Auto Interurban's luxurious road liners, operating on fast schedules. Economical, too!

BUS TERMINAL

Trent & Howard

Spokane



Good Bye Books!



Good bye books! From now on you may have Reddy Kilowatt do the work at small cost.

THE WASHINGTON WATER POWER CO.

Malloy Cover

by

The S. K. Smith Co.

2875 North Western Ave.

CHICAGO

Let Us Be Your Florist

McDonald's Flower Shop

Entrance to Symons Building

Business, Main 2521

Residence, Riv. 2625

Spokane

Zukor's

Famous for Dresses

Riverside Cor. Wall St. Spokane

Phone Main 2067

Diamond Rings

The finest of quality

The lowest of price always

SARTORI

Master Craftsmen in Jewelry

On the East Side of Wall Street
Between Riverside and Sprague

*"Clothes With a College
Education"*

EMIRY'S

THE HOUSE OF QUALITY

Reliable Jewelers

For Fifty-three Years

Dodson's

517 Riverside Avenue





CURLEW

For 34 years the Inland Empire's discriminating dealers have chosen for their particular customers these Curlew products.

ICE CREAM
 BUTTER
 EGGS
 CHEESE

They made their way by the way they're made."

Curlew Creamery Co.

Manufacturers and Distributors

Spokane - Chewelah - Grand Coulee

**For Every
 Fuel Need Call**

B. 2101



Headquarters

**Great Western
 Fuel Co.**

E. 222 DeSmet

**Styled TO THE STUDENT'S NEEDS, the Superb New
PARKER PENS Make Writing a Pleasure**

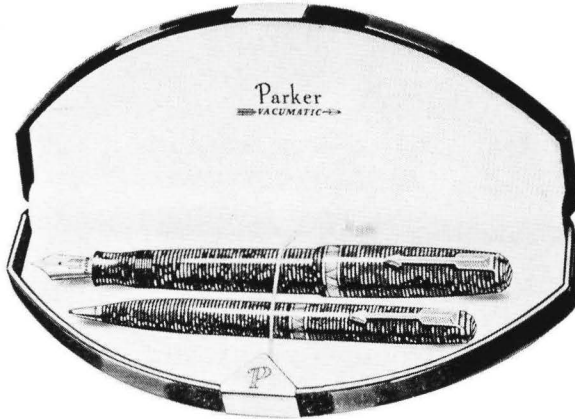
PARKER PENS are perfect for the student because they're so fast, so carefree, so effortless in their performance. You'll dash off pages of prize-winning themes without a ny traces of writing fatigue. Your Parker pen will become your most intimate friends . . . years afterwards it will still be your treasured writing companion!

**SEE OUR GRADUATION
SELECTION NOW!**

Pens, \$2.75 to \$10.

Pen and Pencil Sets, \$3.95 to \$15.

There's a Parker Pen or Set that will exactly fit your needs. Many styles in attractive colors.



John W. Graham & Co.
If It's Made of Paper We Have It.

708-716 First Ave.
707-711 Sprague Ave.





BURGAN'S

Money-Saving
Food Stores



You'll Save at Burgan's



36 Stores in
The Inland Empire

Whitworth Headquarters

For Low-Price Food and
Fountain Treats

Desert Hotel OASIS

SPOKANE'S COMPLETE DRUG STORE

- Drugs and Medicines
- Sick-Room Needs
- Toiletries—Cosmetics
- Pens and Pencils
- Cameras and Supplies

JOYNER'S

Howard & Riverside Main 5311



*So that You
need not guess!*

*We maintain ample
equipment and an ex-
perienced art and
mechanical staff —
So that our patrons
need leave nothing to
chance*

**THE
SPOKANE AMERICAN
ENGRAVING COMPANY**

Established 1904



. . . . Taps