

1891

Catalogue of Whitworth College, 1891-1892

Whitworth University

Follow this and additional works at: <http://digitalcommons.whitworth.edu/whitworthcatalogs>

Recommended Citation

Whitworth University, "Catalogue of Whitworth College, 1891-1892" Whitworth University (1891). *Whitworth Catalog*. Paper 20.
<http://digitalcommons.whitworth.edu/whitworthcatalogs/20>

This text is brought to you for free and open access by the University Archives at Whitworth University. It has been accepted for inclusion in Whitworth Catalog by an authorized administrator of Whitworth University.

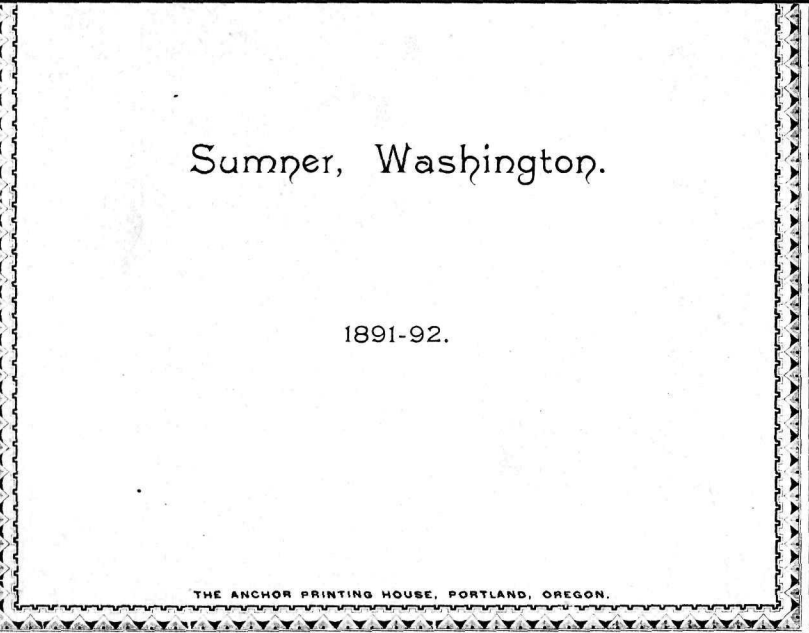


CATALOGUE

OF

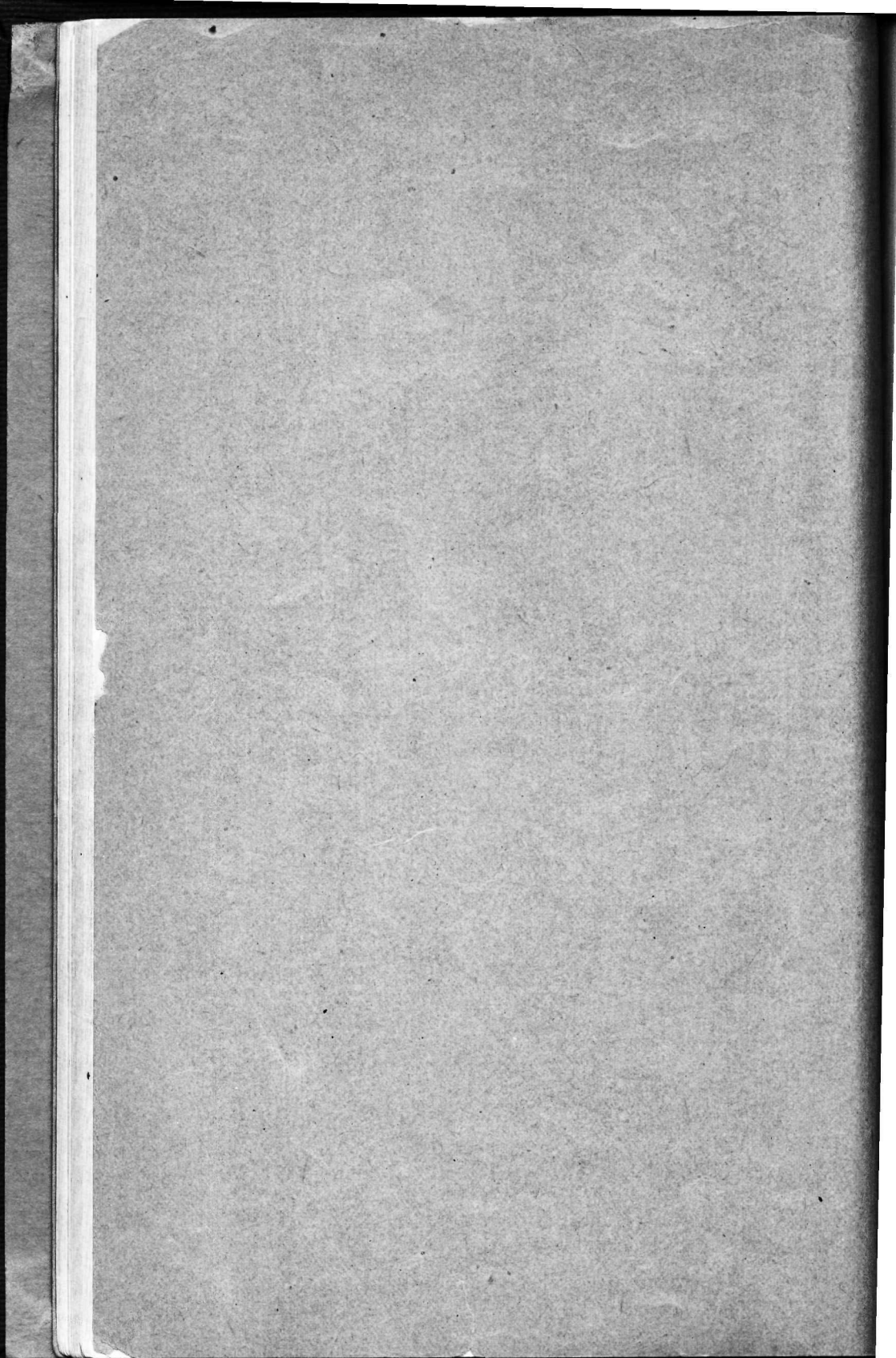


HITWORTH COLLEGE.



Sumner, Washington.

1891-92.



THE SECOND

ANNUAL CATALOGUE

—OF—

WHITWORTH COLLEGE

SUMNER, WASHINGTON.

1891-92.

THE ANCHOR



PRINTING HOUSE,
PORTLAND, OREGON.

COLLEGE CALENDAR.

—◆—

1891.

Wednesday, September 9th, College Year begins
 Tuesday, November 24th, First Term ends
 Wednesday, November 25th, Second Term begins
 Vacation, From December 22d to January 6, 1892

1892.

Tuesday, March 1st, Second Term ends
 Wednesday, March 2nd, Third Term begins
 Sunday, May 22d, Baccalaureate Sermon
 Tuesday, May 24th, Address before Literary Societies
 Wednesday, May 25th, Commencement Day

 BOARD OF INCORPORATORS.

REV. GEO. F. WHITWORTH, D. D.
 REV. WILLIAM B. LEE, D. D.
 REV. WILLIAM A. MACKEY.
 MR. GEORGE F. ORCHARD.
 REV. ELLIOTT W. BROWN.
 MR. E. C. MEADE.
 GEN. J. W. SPRAGUE.
 REV. J. M. PATTERSON.
 REV. D. M. DAVENPORT.
 REV. R. B. DILWORTH.
 HON. L. F. THOMPSON.

 BOARD OF TRUSTEES.

REV. GEORGE F. WHITWORTH, D. D.
 REV. J. M. PATTERSON.
 REV. ELLIOTT W. BROWN.
 MR. E. C. MEADE.
 MR. GEORGE F. ORCHARD.
 HON. L. F. THOMPSON.

 OFFICERS OF THE BOARD OF TRUSTEES.

REV. GEO. F. WHITWORTH, D. D.,	President
REV. J. M. PATTERSON,	Secretary
MR. GEO. F. ORCHARD,	Treasurer

 EXECUTIVE COMMITTEE.

REV. GEO. F. WHITWORTH,	Chairman
REV. ELLIOTT W. BROWN,	Secretary
MR. E. C. MEADE.		

FACULTY AND INSTRUCTORS.

REV. CALVIN W. STEWART, D. D., PRESIDENT,
Professor of Christian Ethics and Political Science.

REV. A. T. FOX, B. L., B. D., VICE-PRESIDENT,
Professor of Moral and Intellectual Philosophy and Greek.

REV. WILMER McNAIR, A. M.,
Professor of Latin and German.

CHALMERS GUNN, A. B.,
Professor of Natural Sciences, French and Higher Mathematics.

MISS MARY C. EDMISTON, PH. B.,
Principal of Preparatory Department and Instructor in Mathematics.

MRS. LILA E. FOX,
Principal of Musical Department.

* _____
Assistant Teacher Musical Department.

* _____
Teacher of Vocal Culture.

*To be supplied before the opening of the next scholastic year.

MISS MARY CLUGSTON,
Teacher of Art.

MRS. WILLIAM THOMPSON,
Instructor in Elocution.

MRS. H. D. WRIGHT,
Matron.

REV. GEO. F. WHITWORTH, D. D.,
Lecturer on Pedagogics.

REV. J. M. PATTERSON,
Lecturer on a Special Course of History.

REV. D. M. DAVENPORT,
Lecturer on Church History.

REV. JAMES A. LAURIE,
Lecturer on Civics.

J. W. HICKMAN, M. D.,
Lecturer on the Principles of Physiology and Anatomy.

ROLL OF STUDENTS.

MALE.

GEORGE ATKINSON	Sumner, Wash
WESTLEY BARKMAN	Sumner, Wash
WILLIAM BRANNAN	Slaughter, Wash
RANKIN DAVENPORT	Sumner, Wash
FRED DAVIDSON	Sumner, Wash
CLIFFORD DAVENPORT	Sumner, Wash
EARNEST DARR	Sumner, Wash
THOMAS DARR	Sumner, Wash
FRED DOBLER	Sumner, Wash
ROLLO EVERETT	Sumner, Wash
CHARLES EVERETT	Sumner, Wash
ROSCO EVERETT	Sumner, Wash
CLAYTON EVERETT	Sumner, Wash
CLIFFORD EVERETT	Sumner, Wash
WALTON ELLIOTT	Seattle, Wash
FRANK ELLIOTT	Seattle, Wash
PERLY FRENCH	Slaughter, Wash
CHARLES FRENCH	Slaughter, Wash
SENTA GARDELLA	Sumner, Wash
LEWIS GILHAM	Sumner, Wash
ROSLYN HORNER	Sumner, Wash
ROBERT MILLER	Sumner, Wash
ROBERT MONTGOMERY	Quarryville, Penn
THOMAS MARTIN	Avondale, Penn
CHARLES MCFARLAND,	Sumner, Wash
CHARLES PEASE	Seattle Wash
FRED PURVIS	Sumner, Wash
WILLIAM PRIESTLEY	Renton, Wash
CLARENCE QUERY	Sumner, Wash

29

HARRY RYAN	Sumner, Wash
LEWIS RYAN	Sumner, Wash
HAROLD SANDI	Sumner, Wash
CHARLES STEWART	Sumner, Wash
CALVIN W. STEWART, JR.	Sumner, Wash
ALBERT C. STEWART	Sumner, Wash
JAMES STEWART	Sumner, Wash
ADISON STEWART	Sumner, Wash
WILLIAM STAYT	Blaine, Wash
EDWIN THOMPSON	Sumner, Wash
BERT UPSON	Sumner, Wash
ROBERT VANTASSEL	Sumner, Wash
IRWIN WALLACE	La Conner, Wash
SCOTT WALLACE	La Conner, Wash
IRWIN WARD	Seattle, Wash
CLAUD WEEKS	Argyle, Wash
WILLIE KINCAID	Sumner, Wash
FRED WHITWORTH	Renton, Wash
HARRY WILLIAMS	Sumner, Wash
BYRON YOUNG	Sumner, Wash

FEMALE.

HATTIE BERRY	Sumner, Wash
LIZZIE BROWN	Seattle, Wash
IDA GOW	Sumner, Wash
ETTA GARDELLA	Sumner, Wash
MAGGIE GOW	Sumner, Wash
CARRIE HARRIS	Sumner, Wash
EDITH HERRON	Sumner, Wash
ANNA HEWITT	Hillhurst, Wash
BELLE JOHNS	Sumner, Wash
CARRIE JOHNS	Sumner, Wash
HELLEN JOHNS	Sumner, Wash
EDNA KINCAID	Sumner, Wash
SUSIE KINCAID	Sumner, Wash

JOSIE MCGREW	Sumner, Wash
SUSIE MEADE	Sumner, Wash
ANNIE MALONEY	Sumner, Wash
MARY MONROE	Sumner, Wash
MAUD MORE	Sumner, Wash
MARY PATCH	Sumner, Wash
BERTHA POWERS	Sumner, Wash
MARY J. REID	Seattle, Wash
SARAH STEWART	Sumner, Wash
MAY STEWART	Sumner, Wash
ETHEL SIDERS	Sumner, Wash
SELMA SUNDBLOM	Sumner, Wash
RELLA WILSON	O'Brien, Wash
MAUD WILSON	O'Brien, Wash
GERTIE WILLIAMS	Renton, Wash
WINFRED WEEKS	Argyle, Wash

27
 20
29
 78

CLASSICAL DEPARTMENT.

FRESHMAN YEAR.

- FIRST TERM: Greek—Homer's *Odyssey*.
 Latin—Livy, Latin Composition.
 Mathematics—Ray's Higher Algebra, Geometry, Davies'.
 English Composition.—Biblical and Classical Geography.
 Hygiene—Lectures.
 History.
 English Bible.
- SECOND TERM: Greek—Homer's *Odyssey*.
 Latin—Horace; Exercises in Latin Syntax.
 Mathematics—Geometry, Algebra.
 Greek Antiquities.
 English Composition.
 Hygiene—Lectures.
 Biblical Geography—Coleman.
 English Bible—History and Chronology.
- THIRD TERM: Greek—Homer's *Iliad* and Greek Prose.
 Latin—Horace.
 Mathematics—Algebra, (completed.)
 Geometry, (completed.)
 Roman Antiquities.
 Biblical Geography.
 Essays and declamations throughout the year.
 History.
 English Bible.

SOPHOMORE YEAR.

- FIRST TERM: Greek—Homer's Iliad and Greek Testament.
—Acts.
Latin—Cicero, De Oratore.
Mathematics — Trigonometry, Plane and Spherical.
English Composition.
History.
English Bible.
- SECOND TERM: Greek—Prometheus of Æschylus.
Latin—Satires Epistles of Horace.
Mathematics—Conic Sections.
Rhetoric.
History.
English Bible.
- THIRD TERM; Greek—Plato's Apology of Socrates and Crito.
Latin—Satires of Juvenal.
Mathematics—Gillespie's Surveying, Analytical Geometry, Differential and Integral Calculus.
History.
English Bible.

JUNIOR YEAR.

- FIRST TERM: Greek—Demosthenes, De Corona.
Latin—Cicero, De Officiis.
Mathematics—Mechanics.
Natural Philosophy—Ganot's Physics.
Rhetoric.
History.
English Bible.
German }
French } Elective.

SECOND TERM: Greek—Greek Testament—Romans.
 Latin—Elective.
 Mathematics—Astronomy.
 Chemistry.
 Natural Philosophy—Ganot's Physics.
 Rhetoric.
 English Bible.
 German }
 French, } Elective.

THIRD TERM: Greek—Greek Testament—Romans.
 Natural Philosophy—Ganot's Physics.
 Logic.
 Rhetoric—Whateley's Rhetoric.
 History.
 English Bible.
 Latin, }
 German, } Elective.
 French, }

SENIOR YEAR.

FIRST TERM: Mental Philosophy—Porter's Human Intellect.
 Moral Philosophy.
 Geology—La Conte.
 Political Science—Mills' Political Economy.
 History.
 English Bible.
 Latin, }
 Greek, } Elective.
 German }
 French }

SECOND TERM: Mental Philosophy—Porter's Human Intellect.
 History—Schwegler's History of Philosophy.
 Butler's Analogy.
 Comparative Philology.
 Zoology.

SECOND TERM: Biology.
Continued. English Bible.
 Latin, }
 Greek, } Elective.
 German, }
 French, }

THIRD TERM: Mental Philosophy—Porter's Human Intellect.
 Geology.
 Botany—Gray's.
 Lithology.
 Civics.
 Latin, }
 Greek, } Elective.
 German, }
 French, }

LATIN SCIENTIFIC WITH MODERN LANGUAGES.

FRESHMAN YEAR.

FIRST TERM: Latin—Livy and Latin Prose.
 Mathematics—Ray's Higher Algebra; Geometry, Davies'.
 Biblical Geography, Coleman.
 Chemistry—Hygiene by Lectures; English Composition.
 History.
 English Bible.

SECOND TERM: Latin—Horace; Exercises in Latin Syntax.
 Mathematics—Geometry.
 English Composition.
 Organic Chemistry.
 Biblical Geography.
 Hygiene by Lectures.
 History.
 English Bible.

THIRD TERM: Latin—Horace.
 Mathematics—Algebra; Geometry.
 Biblical Geography.
 Mineralogy.
 Roman Antiquities.
 English Composition.
 History.
 English Bible.

SOPHOMORE YEAR.

FIRST TERM: Latin—Cicero, De Oratore.
 Mathematics — Trigonometry, Plane and
 Spherical.
 Acts of the Apostles in Latin.
 Old Testament, English.
 History.
 English Bible.

SECOND TERM: Latin—Satires and Epistles of Horace.
 Mathematics—Conic Sections.
 Rhetoric.
 Analytical Chemistry.
 English, Spenser.
 History.
 English Bible.

THIRD TERM: Latin—Satires of Juvenal.
 Mathematics—Surveying; Analytical Geom-
 etry; Integral and Differential Cal-
 culus.

THIRD TERM: Rhetoric.
Continued. Acts of the Apostles, in Latin.
 English, Chaucer.
 History.
 English Bible.

JUNIOR YEAR.

FIRST TERM: Latin—Cicero, De Officiis.
 Mathematics—Mechanics.
 Natural Philosophy—Ganot's Physics.
 German.
 French.
 English—Bacon.
 History.
 English Bible.

SECOND TERM: Latin—Tacitus.
 German.
 French.
 Physical Geography
 Natural Philosophy—Ganot's Physics.

THIRD TERM: German.
 French.
 English—Shakespeare.
 Logic.
 Rhetoric.
 Natural Philosophy—Ganot's Physics.
 History.
 English Bible.

SENIOR YEAR.

FIRST TERM: German.
 French.
 Mental Philosophy—Porter's Human Intellect.
 Moral Philosophy.
 Geology.
 Political Science, Mills'.
 History.
 English Bible.

- SECOND TERM: Mental Philosophy.
 History—Schwegler's History of Philosophy.
 Butler's Analogy.
 Comparative Philology.
 French.
 German.
 English Bible.
- THIRD TERM: Mental Philosophy.
 Geology.
 Botany.
 Lithology.
 History—Hallam's Constitutional History.

—◆—
 LADIES' COURSE.
 —◆—

FRESHMAN YEAR.

- FIRST TERM: Latin—Livy.
 French—Grammar and Reader.
 German—Grammar and Exercises.
 Mathematics—Geometry and Higher Algebra.
 Special History—Rome.
 Biblical and Classical Geography.
 Hygiene by Lectures.
 English Bible.
 Greek—Homer's Odyssey. (Elective.)
- SECOND TERM: Latin—Horace, Prose Composition.
 French—Pressense's Rosa, Grammar.
 German—Grammar, Schiller's William Tell.
 Rhetoric—With Essay Writing.
 Elocution.
 General History and Chronology.
 English Bible.
 Greek, Elective — Homer's Odyssey and Prose Composition.

THIRD TERM: Latin, Horace—Scanning.
French.
German.
Mathematics—Algebra completed and Geometry, completed.
Roman Antiquities.
Biblical Geography.
General History.
English Bible.
Greek, Elective—New Testament.

SOPHOMORE YEAR.

FIRST TERM: Latin—Cicero De Oratore.
French—Fleury's *Historie de France*.
German—Schiller's *Maria Stewart*.
Science—Physiology, Use of Charts, etc.
Mathematics — Trigonometry, Plane and Spherical.
English Composition.
General History.
English Bible.

SECOND TERM: Latin—Horace.
French—Fleury's *Historie de France*.
German—Schiller.
Science—Physiology.
Rhetoric.
English Bible.

THIRD TERM: Latin—Satires of Juvenal.
French—Racine's *Athalie*.
German—Schiller.
General History.
English Bible.

JUNIOR YEAR.

- FIRST TERM: Latin—Cicero De Officiis.
French—Racine's Iphigenia.
German—Goethe's Iphigenia.
Science—Natural Philosophy.
Rhetoric.
History—Special.
English Bible.
- SECOND TERM: Latin—Cicero De Officiis.
French.
German.
Science—Natural Philosophy and Chemistry
Rhetoric.
English Bible.
- THIRD TERM: French.
German.
Science—Natural Philosophy and Chemistry.
Logic.
Rhetoric.
History—Special.
English Bible.

SENIOR YEAR.

- FIRST TERM: French.
German.
Mental Philosophy—Porter's Human Intellect.
Moral Philosophy.
Geology—La Conte.
Political Science—Mills.
History—Special.
English Bible.

SECOND TERM: French—French Conversation and Reviews.
German—German conversation and Reviews
Mental Philosophy—Porter's Human Intellect.

History of Philosophy—Schwegler.

Zoology.

Biology.

Butler's Analogy.

Comparative Philology.

English Bible.

THIRD TERM: Mental Philosophy.
Geology.
Botany—Gray's.
Lithology.
Civics.

PIANO.

SPECIALTIES.

Fundamental Principles:—Theory of touch, the lever, hammer and pressure principles, combination of different shadings in touch, expression and phrasing.

STUDIES.

Schmitt, Czerny, Cramer, Theo. Kullak, Caral Tausig, Chopin, Hænselt, Liszt, Rubenstein and Thalberg.

ART DEPARTMENT.

COURSE OF STUDY.

Drawing in Pencil, Charcoal and Crayon from objects, flat and cast; Portraiture in Crayon, Oil and Pastel; Landscape, Animal Painting; Fruit and Flowers in Black and White; Oil, Water Colors, Pastel.

THE DESIGN OF THE INSTITUTION.

It is intended to give to both sexes a thorough course of education, equal to that of our best Eastern colleges, guarding well the moral and religious life of the students, ever directing them in the pursuit of that learning and culture of the heart and mind that make the finished scholar. This institution is well fitted for this, being under the control and direction of the Presbyterian Church. Yet, while it is denominational, it does not aim to be sectarian, opening its doors to all lovers of truth and learning.

THE POSITION OF THE COLLEGE.

Whitworth College is situated at Sumner, in the central part of Western Washington, in the beautiful Puyallup Valley, surrounded with mountain scenery calculated to give inspiration to the artist and the lover of the beautiful in nature.

Mount Rainier, or Tacoma, rises up in the distance 14,444 feet above the sea level, with her eternal snow and winter, as the proud sentinel of the many productive valleys around her, always inviting the admiration of the tourist and soliciting the speculations of the scientist.

The climate in this part of Washington is salubrious and healthful. The town is well supplied with clear, sparkling water brought from the springs of the foot hills of the Cascade Mountains.

One of the particular advantages of the College is that of its position between the two great cities of the Northwest, being twelve miles from Tacoma and twenty-eight from Seattle. Access to the College is therefore easy by water and rail. Another very important feature of its location is that it is situated at such a distance from these cities as to have many advantages from their growth in material greatness, yet free from many of those disturbing elements that so detract from a close application to the duties of student life.

The moral tone of Sumner has a reputation above that of any city or town on the Pacific Coast. It is free from saloon influences and is surrounded by a very intelligent, active and enterprising people.

The property of the College consists of a beautiful plot of ground in a very eligible part of the town, affording a fine and capacious campus for the athletic exercises of the students. On this is erected a beautiful three-story building of modern style of architecture.

The trustees have now in the course of erection a wing to the present building, which is designed to afford better facilities for culinary purposes, provide a reading room and an additional recitation room, also to supply the demand for more dormitories for students. A desideratum is accomplished by the erection of this addition in the separation of the sexes. The new addition being devoted exclusively for the young women and the former building for the young men.

The entire structure in all its apartments is heated with steam, and the dormitories newly furnished throughout.

Bath rooms and all modern conveniences are provided in both wings of the building for the comfort and health of the students.

SPECIAL REMARKS ON THE COURSES OF STUDY.

BIBLICAL INSTRUCTION.

The Bible is used as a text book for regular recitations throughout the course in each department of the College. Special attention is given to the harmony of the gospels and the life and words of Christ are made the center of Biblical study.

Throughout this course of instruction the language of the English version is constantly examined and referred to as standard English.

In Political Philosophy reference is made to the Hebrew Commonwealth.

The truths taught in the Bible in relation to the char-

acter, powers, and duties of man are inculcated as fundamental in Mental and Moral Philosophy and the Philosophy of History is identified with the History of Redemption.

It is designed to make the Bible the central object of study in the whole College course.

LECTURES.

Arrangements have been made for a series of lectures on Pedagogics, Civics, Special History, Physiology and Hygiene, such as will give the students practical ideas of these important branches of learning, helping them on in their research and study of the text book of the class room.

PREPARATORY DEPARTMENT.

This department is calculated to prepare students for the collegiate courses of study; and includes all the studies that are required for examination and admission to the Freshman classes.

NORMAL DEPARTMENT.

This department is designed to give thorough instruction in the science and methods of teaching and also to furnish the student with a competent knowledge of all branches necessary to prepare them for the work of teaching in our public schools. The students of this department will be given the privilege of electing studies from the higher courses in Mathematics, History, Philosophy, Ancient and Modern Languages or such other studies as may be useful to them in their preparation for their professional work.

RHETORIC AND ELOCUTION.

Besides the study of the text books written essays and declamations are required of all the students. Great pains are taken to encourage the habit of simple and earnest com-

munication of connected thought. Mrs. Thompson, an experienced and popular elocutionist has been engaged to take charge of the department of elocution; and will give instruction to all students who may desire to perfect themselves in this most desirable art.

LADIES' COURSE.

This course is designed, by the omission of Greek, to give the ladies more time for the study of music and art and other accomplishments.

All the courses of study, however, are opened equally to the ladies from which they can select as their tastes may suggest.

The degree of B. A. will be conferred upon all who complete this course of study.

MUSICAL DEPARTMENT.

The object and aim of this department is to give as thorough a course of instruction as can be had in any school on the Pacific Coast. Competent teachers have charge of this department and will be able to lead the student through those difficulties which so often give discouragement to the beginner and also to assist the more advanced students in becoming masters of classical music.

ART DEPARTMENT.

Special care will be given in the selection of a teacher of art—one that has had a thorough training in all the technicalities that belong to the work of the professional artist. We will, therefore, be able to give such instruction to students as will merit the patronage of the lover of fine art.

COMMERCIAL DEPARTMENT.

This department is intended to give a sound, practical drill in mathematics, letter writing, punctuation and pen-

manship, before there is an attempt at theoretical and practical book-keeping. There will also be given students an opportunity to study shorthand.

CLASSICAL DEPARTMENT.

Candidates for admission to Freshman Class must pass satisfactory examinations in the following branches:

1. **Latin Grammar.**—Translation at sight of passages from Cicero or Cæsar; Virgil, first six books, or their equivalent.
2. **Greek Grammar.**—Translation of English into Greek at sight; Xenophon's Anabasis, four books.
3. **Mathematics.**—Arithmetic; Algebra to quadratic equations; Geometry, three books.
4. **History of United States.**

EXPENSES.

Students in the building, cost per annum, including board, room and tuition	\$210 00
Per Term	75 00
Tuition per term in Collegiate Department	12 00
Tuition per term in Preparatory Department	10 00

EXTRA CHARGES.

Instrumental Music, per term	12 00
Use of Piano, per term	3 00
Vocal Music Lessons, per term	15 00
Drawing Lessons, per term	10 00
Crayon Lessons, per term	10 00
Paintings in Oil and Water Colors	12 00
Decorating China, per term	12 00
Portraiture, per term	12 00

German and French to special students, to be agreed upon.

A discount of 50 per cent. in tuition allowed to children of clergymen.

Tuition strictly in advance at the opening of each term, and no remittance will be made, except on account of prolonged sickness.

Students boarding in the building will be expected to pay one half of their bill for the year on matriculation, and the balance January 6, '92.

Parents and guardians at a distance may deposit funds with any member of the faculty, who will pay particular attention to the pecuniary concerns of the student, settling his bills and transmitting an account of the expenditure, for which services no commission will be charged.

SPECIAL CARE OF STUDENTS.

The male and female students will occupy separate wings of the building and no access permitted from the one to the other.

Miss Edmiston, a highly cultivated and experienced teacher will have exclusive charge of the young women, and will accompany them when necessarily called to leave the College grounds.

Mrs. Wright, the matron, will have supervision of their rooms and due inspection will be made as to the care and order in which they are kept.

The young men will be under the care and supervision of Prof. Gunn while in their rooms and they will not be permitted to leave the college grounds without first obtaining the consent of some member of the faculty.

EXERCISE.

Special attention will be given to the physical development of the students by games and athletic sports upon the College campus.

Provision will be made in the near future for the erection of a Gymnasium which will be under the management and control of one of the professors who will see that the necessary precautions are taken in all exercises suited to the physical wants of the student.

DEGREES.

The degree of Bachelor of Arts will be conferred on all graduates of the Classical Department, and of the Ladies' course; the degree of Bachelor of Science will be conferred on all graduates of the Scientific Department; the degree of Masters of Arts will be conferred upon any Bachelor of Arts who has been engaged in literary or scientific pursuits for a period of not less than three years since his graduation, and who has sustained a good moral character; the degree of Master of Sciences will be conferred upon any graduate of the Scientific Department who has been engaged in scientific pursuits for a period of time not less than three years and during that time has sustained a good moral character.

ABSTRACT OF RULES OF GOVERNMENT.

1. Students are responsible for the order of their rooms.
2. Students absent from any class without excuse are not entitled to recite until excused.
3. Persons calling upon young ladies must present letters of introduction from parents or guardians.
4. Visitors are not admitted to the private apartments of young ladies. Calls are not allowed to interfere with study hours. No calls permitted on the Sabbath.

5. The young ladies boarding in the school will not visit the town without permission.

For the violation of the above rules students may be demerited, reprimanded, suspended, or expelled, according to the nature of the offense.

RELIGIOUS WORSHIP.

The exercises of the College are opened daily with reading of the Scriptures and prayer, conducted by a member of the Faculty, at which all students are required to be present.

On the Sabbath students will be required to attend divine service in some one of our churches and when no preference has been expressed by parents or guardians, attendance at the Presbyterian church will be required.

LITERARY SOCIETIES.

During the past year there was organized the Calliopean Literary Society, and the coming year another will be organized.

There will be given, in these societies, to students a grand opportunity to apply the results of study and put into practice their knowledge of elocution.

TERMS OF ADMISSION.

All applicants for admission to the college must either be known by some member of the faculty or present testimonials of good moral character; and if any applicant has been attending any other college, must present a letter of honorable dismissal.

EXAMINATIONS AND REPORTS.

There will be an examination on studies at the end of each term.

Reports will be given at the end of each month of class standings and department.

BEQUESTS AND DEVISES.

Each State has special statutory regulations in regard to wills, and it is most important that all testamentary papers be signed, witnessed, and executed in all other respects according to the laws of the State in which the testa-

tor resides. In all cases, however, the name of the corporation must be accurately given, as in the following forms:

I give and bequeath to the "Trustees of Whitworth College," in Sumner, Washington, and to their successors and assigns forever, the sum of.....dollars, to be safely invested by said corporation in good real estate security, and the interest accruing therefrom to be applied to the support of the Professors in said College.

I give and bequeath a certain lot, situated, etc., to the "Trustees of Whitworth College," in Sumner, Washington, and to their successors and assigns forever, for the uses and purposes of said College, according to the provisions of its charter.