

1935

Natsihi Yearbook 1935

Whitworth University

Follow this and additional works at: <http://digitalcommons.whitworth.edu/yearbooks>

Recommended Citation

Whitworth University, "Natsihi Yearbook 1935" Whitworth University (1935). *Natsihi Yearbook*. Paper 28.
<http://digitalcommons.whitworth.edu/yearbooks/28>

This text is brought to you for free and open access by the University Archives at Whitworth University. It has been accepted for inclusion in Natsihi Yearbook by an authorized administrator of Whitworth University.

1935

Natsihi Yearbook 1935

Whitworth University

Follow this and additional works at: <http://digitalcommons.whitworth.edu/yearbooks>

Recommended Citation

Whitworth University, "Natsihi Yearbook 1935" Whitworth University (1935). *Natsihi Yearbook*. Paper 28.
<http://digitalcommons.whitworth.edu/yearbooks/28>

This Book is brought to you for free and open access by the University Archives at Whitworth University. It has been accepted for inclusion in Natsihi Yearbook by an authorized administrator of Whitworth University.

The cover features a detailed embossed landscape. On the left side, there are several tall, thin trees with sparse foliage. In the background, a range of mountains is depicted with simple, rounded peaks. The entire scene is set against a background of a fine, repeating geometric pattern, possibly a diamond or cross-hatch design, which is also embossed into the material. The overall texture is highly tactile and uniform in color.

NATSIHI
1935

NATSIHII

1935

NATSIHI

1 9 3 5

Published by

Junior Class

— of —

Whitworth College

Spokane, Washington

Foreword

*N*ATSIHI of 1935 comes to you with a breath of evergreen trees, a suggestion of the beauty of the outdoors, endeavoring to express the meaning of "Among the Pines." It has been the desire of the staff thus to typify the spirit of Whitworth College, which reaches and grows, like the pines, toward the sun.

Table of Contents

FACULTY

CLASSES

ATHLETICS

ACTIVITIES

CAMPUS

ADVERTISING

and

JUST A LITTLE FUN

Dedication

To YOU with whom we have laughed, worked, and played; with whom days of happy companionship have been lived; with whom we have climbed a little closer to the stars—Students of Whitworth, we dedicate this NATSIHI to you.

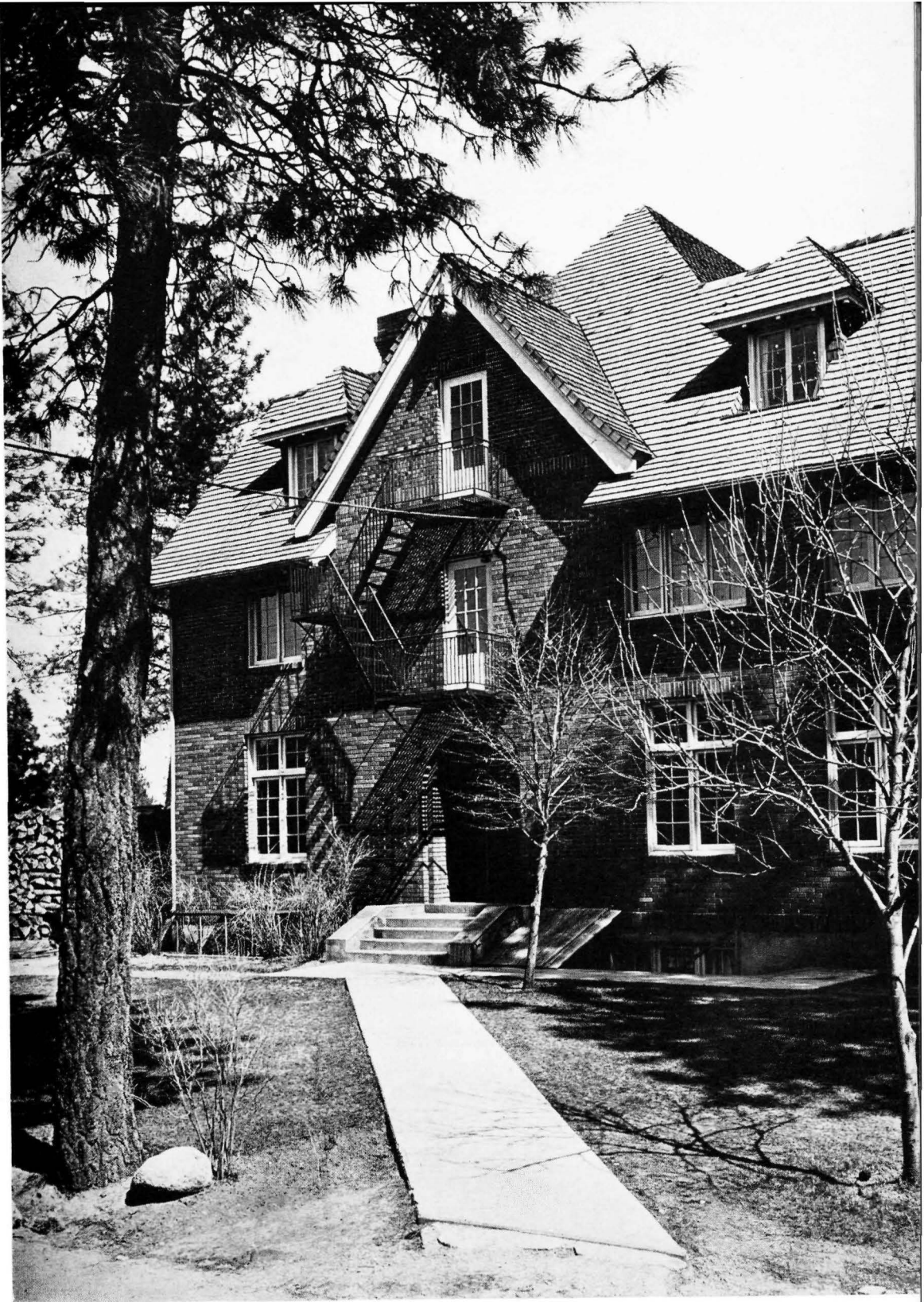
Whitworth from the Air

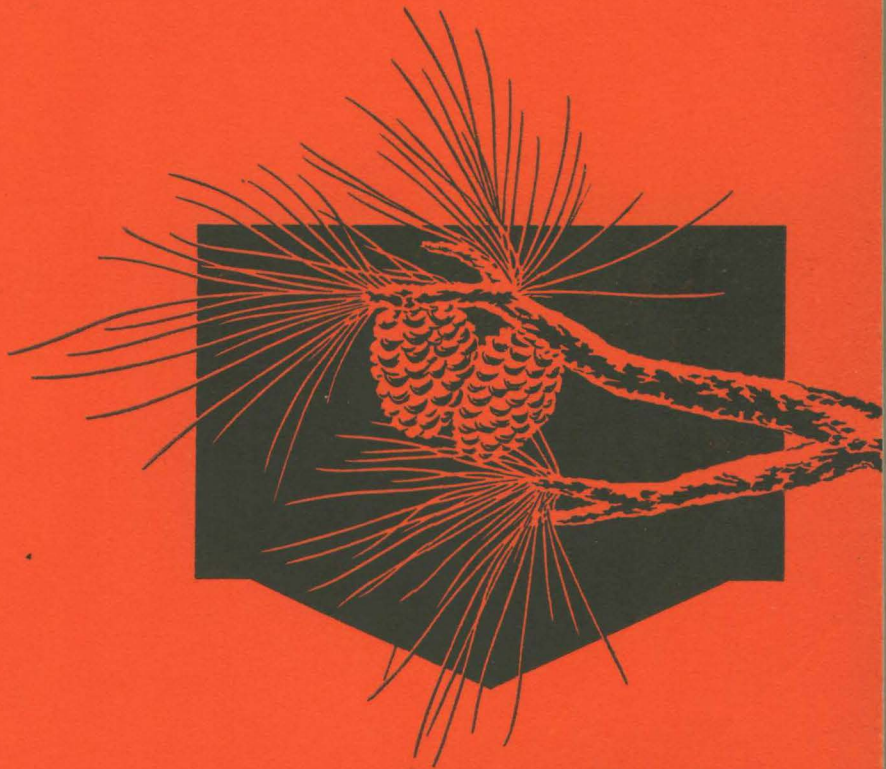


"Among the Pines"



McMillan Hall





FACULTY

“The heavens declare the glory of God and the firmament showeth his handiwork.”

Natural beauty as well as trained culture is an essential element at Whitworth College, whether it be found in vibrant youth in hall or on campus; or in teacher with ideas new and refreshing; or in a tall pine swaying in the whispering breeze.

Nature modified a little by the human touch forms the setting for the jewel of highest culture—a human soul filled with a desire to be useful, to be happy, to be eternal.

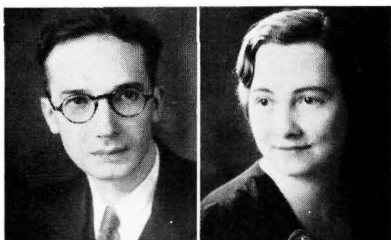
WARD W. SULLIVAN,
President.



Ward W. Sullivan, Ph. D.
President of the College

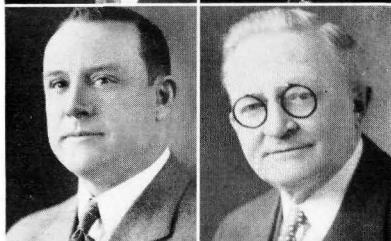


Francis T. Hardwick, Ph. D.
Dean of the College



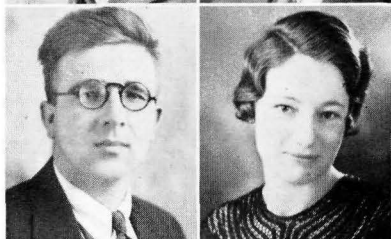
G. Bernard Baldwin, Valparaiso University. Director of Extension Service. Whitworth, 1934.

Estella Baldwin, A.B., Whitworth College. Secretary to the Dean. Whitworth, 1934.



Ford L. Bailor, B.S., Spokane University. Director of Promotional Activities. Whitworth, 1929.

James Willard Counterline, D.D., Buena Vista College. Bible and Religious Education. Whitworth, 1928.



LaVerne K. Bowersox, Ph.D., Ohio State University. History and Political Science. Whitworth, 1932.

Jeannette E. Foster, A.B., University of Washington. Secretary to the President. Whitworth, 1934.



Mabel M. Goodfellow, B.S., Teachers' College, Columbia University. Fine Arts. Whitworth, 1934.

Charles Wherry Hays, D.D., Washington and Jefferson College. Classical Languages. Whitworth, 1924.



Leslie Hedrick, Ph.D., University of Michigan. Biology. Whitworth, 1932.

Orpha Helm Hedrick, A.B., Iowa State Teachers' College. Women's Physical Education. Whitworth, 1932.



Ina Wright Herbst, B.M., University of Michigan School of Music. Instructor in Voice. Whitworth, 1933.

Winifred McNair Hopkins, A.B., Albany College. Voice. Whitworth, 1934.

Herbert Leigh Hussong, A.M., University of Oregon. Social Science. Whitworth, 1926.

Marion R. Jenkins, A.B., Whitworth College. Dean of Women. Whitworth, 1931.

Helene L. Landsberg, A.M., University of Iowa. Modern Languages. Whitworth, 1933.

Helen L. Magill, A.M., University of Chicago. English. Whitworth, 1930.

Eva Maunus, A.B., Linfield College. Registrar and Instructor in Secretarial Science. Whitworth, 1930.

Leila E. Moore, M.S., Washington State College. Home Economics. Whitworth, 1934.

H. Gardner Morgan, Cornish School. Violin. Whitworth, 1934.

Walter L. Morgan. Engineering and Drawing. Whitworth, 1934.

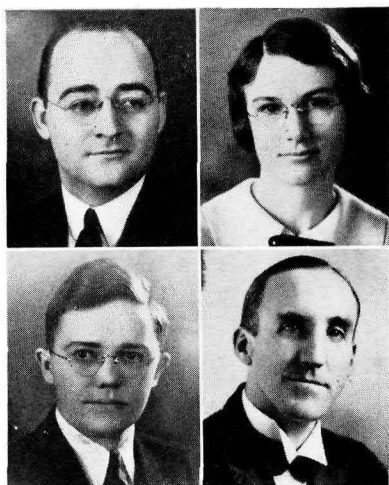
Benjamin Conrad Neustel, M.S., Washington State College. Chemistry. Whitworth, 1928.

Vera Alice Paul, A.M., University of Iowa. Speech and Dramatics. Whitworth, 1934.

Frances Eastman Rose, M.D., University of Minnesota. Hygiene. Whitworth, 1933.

Gerald Moody Stannard, A.B., Ottawa University. Athletics Director and Coach. Whitworth, 1934.



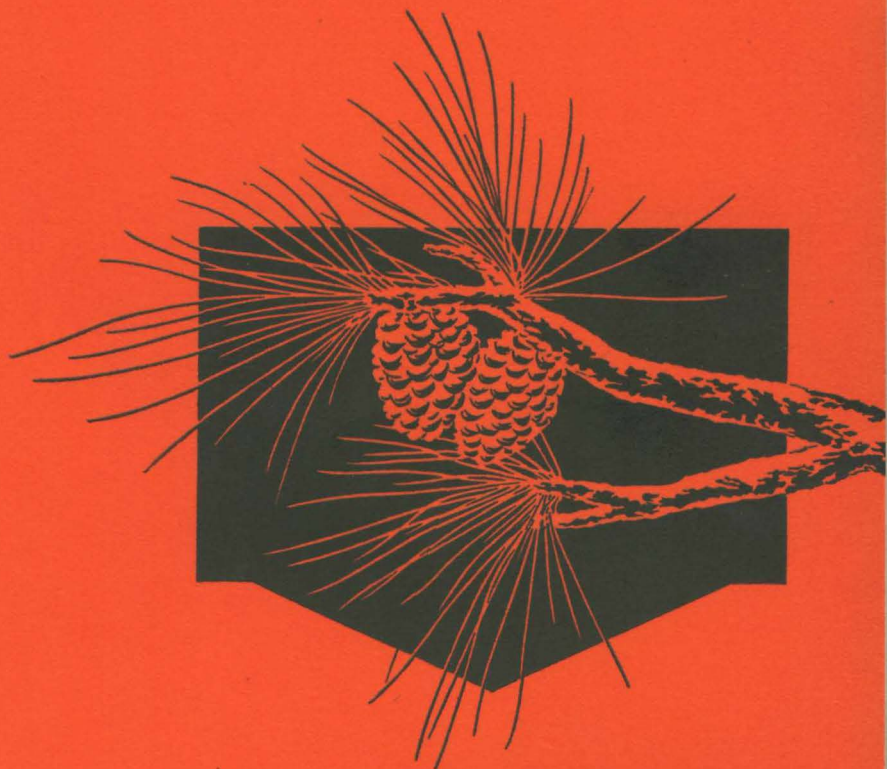


Ray A. Weaver, M.B.A., C.P.A., University of Pittsburgh. Economics and Business. Whitworth, 1934.

Grace E. Wegner, A.M., University of Wisconsin. Instructor in English. Whitworth, 1934.

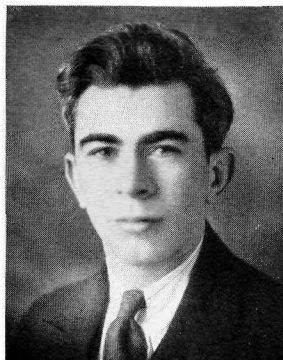
Kenneth Warren Wegner, Ph.D., University of Wisconsin. Mathematics and Physics. Whitworth, 1934.

George B. Williston, A.M., Ohio Wesleyan University. Piano. Whitworth, 1934.

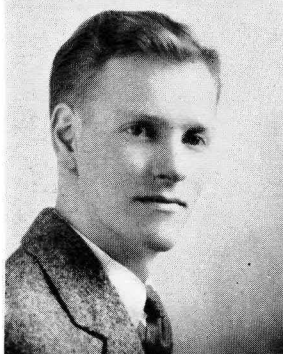


CLASSES

Seniors



Allen T. Bandfield, major—English; minor—History. Manager basketball; member Whitworth Players, Volunteer Fellowship, Christian Endeavor. Entered Whitworth, 1934.



John Bronson, major—Sociology; minor—History. Sports Editor Natsihi, '32; Editor-in-Chief Natsihi, '33.



Bertha Mae Davie, major—Christian Education; minor—Classical Languages. Member Christian Endeavor, Volunteer Fellowship, Art Club, Sefelo, Orchestra, Band, Chorus, Women's Glee Club, Women's Quartet.

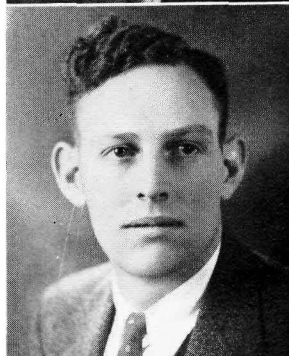


Ward Fancher, major—Mathematics; minors—Physics and Chemistry. President A. S. W. C., '33-'34; Executive Board, '32-'33; "W" Club President, '31-'32; Football, '30, '31, '32, '33; Baseball, '32, '33; Interclass Basketball.

Melvin Fariss, major—Economics; minors—History and Sociology. Football, '32; Basketball, '31, '32; Baseball, '32, '34; Debate Team, Manager, '33, '34; President Senior Class, '34, '35; "W" Club; French Club; Interclass Basketball.



Murdock Hale, major—Biology; minors—English and Classical Languages. Manager Baseball, '31, '32; Chorus, '31, '32; Art Club, '32, '33; Christian Endeavor, Pre-Ministerial Association, '31-'33.



Paul Koper, major — History; minor — Economics. Football, '32, '33, '34; Basketball, '33; Baseball, '32; "W" Club, '33, '34, '35; Volunteer Fellowship, '32, '33, '34, '35; Vice President A.S.W.C., '35; President Christian Endeavor, '33; Football Captain, '34; President Upperclass Men's Association, '35; Manager Ballard Hall, '34; Male Quartet, '34, '35.



Tena Lathrop, major—Sociology; minor—Home Economics. Art Club, Volunteer Fellowship, Christian Endeavor, Orchestra, '30-'32; Pirettes, '33, '34; Alpha Beta, '34, '35.





Douglas R. Macintyre, major—Chemistry; minors—Physics and Mathematics. Interclass Basketball, '33, '34, '35; Tau Sigma, '33, '34, '35; German Club, '33, '34, '35; Tennis, '33, '34, '35; Vice President Upper-class Men's Association, '35.



Marguerite Moseley, major—French; minor—English. Art Club; Modern Language Club; Mixed Chorus; Male Quartet; Glee Club. Entered Whitworth, '34.



Keith A. Murray, major—History; minors—Political Science and Music. Volunteer Fellowship, '32-'35; Christian Endeavor, '32-'35; Debate, '33-'35; Art Club, Whitworth Players, Band, Orchestra, Chorus, Quartet, '33-'35; Modern Language Club, '33-'35; President Junior Class, '34; Social Activities Committee, '34; Executive Board, '34; President, A.S.W.C., '35.



Zena Norton, major—Economics; minor—Sociology. W.A.A. Executive Board, '34, '35; Manager Women's Baseball, '34, '35; Volunteer Fellowship. Entered from W. S. C., '33.

Graham R. Potter, major—History; minors—Mathematics and French. French Club, '32-'34; Debate, '33, '34, '35; Manager, '35; Executive Board, '35; Promotion Committee, '34, '35; Senior Treasurer, '34, '35; Football, '34.



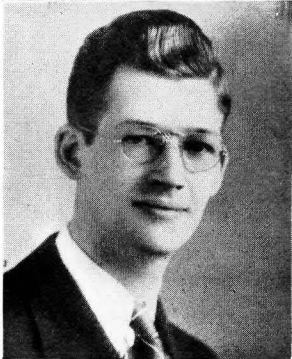
Jewell Pyles, major — Chemistry; minor — Mathematics. Volunteer Fellowship, '31-'35; Assistant in Chemistry; Interclass Basketball, '34, '35.

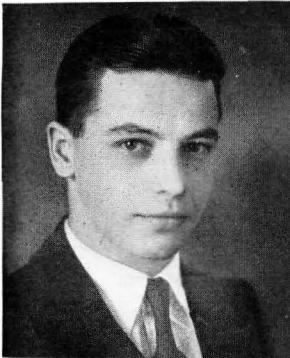


Hazel D. Shull, major—Sociology; minor—Biology. University of Washington and Cheney; entered Whitworth, '33.

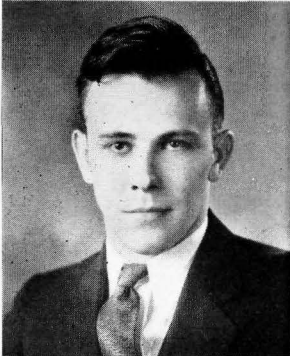


Orlin Spicer, major—French; minor—English. Modern Language Club, '33, '34, '35; Upperclass Men's Association, '34, '35. Entered from Spokane University, '33.





Preston, Swann, major—Mathematics; minor—Physics. Science Club, '33-'35; Art Club, '34; Football, '32, '33; Chairman Senior Carnival.



Hedley Vicker, major—Sociology; minor—History. President "W" Club, '34; Volunteer Fellowship, '34, '35; Pre-Ministerial, '35; Vice President Sophomore Class, '33; Football, '32-'34; Basketball, '32, '33, '35; Tennis, '32.

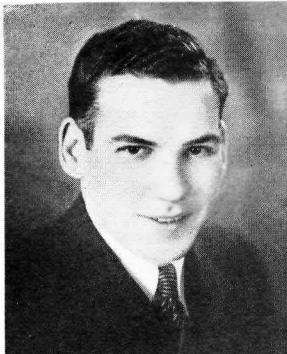


Genevieve Wilson, major—English; minor—Dramatics. French Club, Volunteer Fellowship, Philomel Club, Orchestra, Concert Ensemble, Art Club, '32, '33, '34; Junior Class Treasurer, '34; President Art Club, '34; Whitworth Players, '35; Vice President Senior Class, '35.



Helen Wilson, major—Biology; minor—Music. Orchestra, Trio, Quartet, '32-'35; Pirettes, '34, '35; Art Club, '32-'35; Whitworth Players, '35; W.A.A., '33-'35; Secretary Senior Class, '35; Secretary, W.A.A., '35; May Queen, '35.

Juniors



Bob Allison



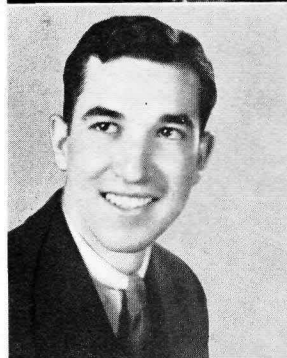
Mary Baker



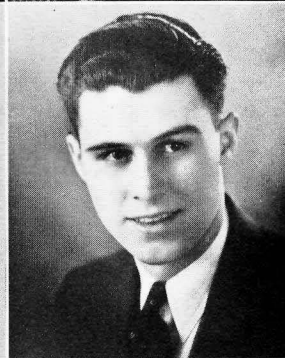
Louise Baer



Jean Campbell



Ned Chapman



Scott Chatterton



Imogene Cowan



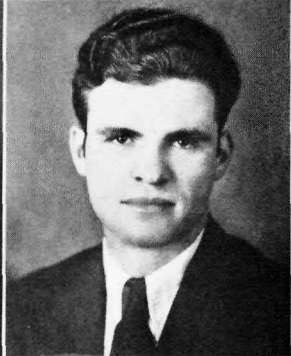
Dorothy Cramer

Alfred Dibblee



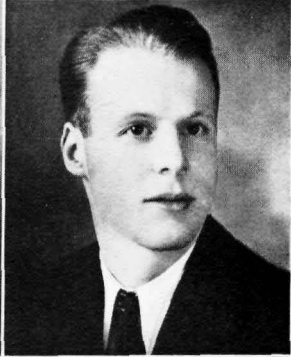
Dan Fleming

Paul Gustafson
Treasurer



Bob Hood

Anne Kamm



Allyn Luenow

Christine McDonald
Vice President



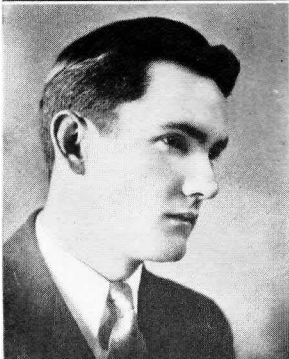
T. C. McFeron



William Miller



Florence Moore



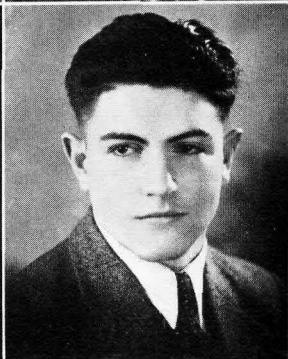
Harold Penhalurick
President



Dorothy Reed
Secretary



John Schlomer



David Stowell



Fred Winkler



Jo Schrap
Vice President

Charles Frazier
President

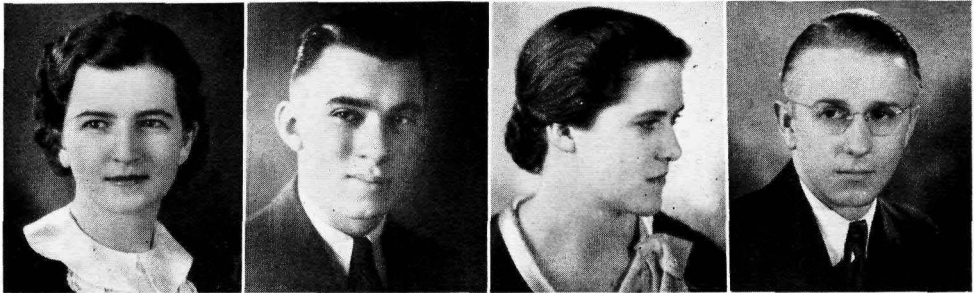
Margaret Close
Secretary

Eleanor Henderson
Treasurer

Sophomore Class

The Sophomore Class started the year successfully by winning the annual Frosh-Soph contest. A picnic honoring the frosh was given May 15.

Officers of the class are: Charles Frazier, president, spring semester; Dwight Calkins, president, fall semester; Jo Schrap, vice president; Margaret Close, secretary; and Eleanor Henderson, treasurer. Dr. K. W. Wegner is the faculty adviser.



Marian Minnich
Secretary

Robert Dumm
President

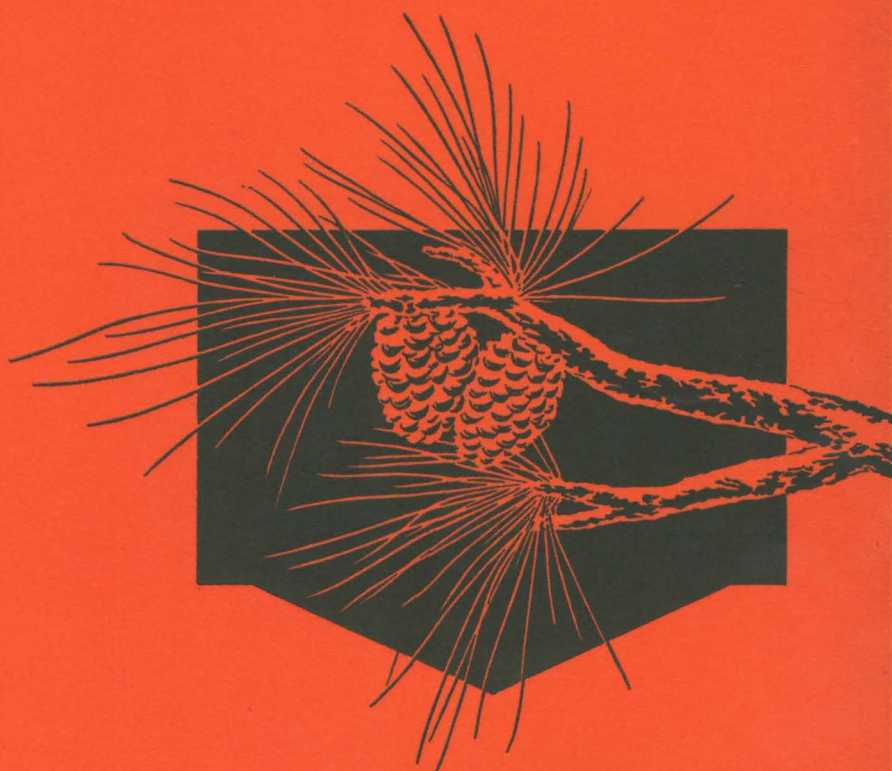
Mary Briggs
Vice President

Lowell Poore
Treasurer

Freshman Class

Among the activities of the Freshman Class for the year are the following: Picnic in the fall; participation in the annual Frosh-Soph contest; a winter party; and a spring picnic, at which the freshmen were guests of the sophomores.

Officers of the class are: Robert Dumm, president; Mary Briggs, vice president; Marian Minnich, secretary; Wendell Taylor, treasurer, fall semester, and Lowell Poore, treasurer, spring semester. Prof. LaVerne K. Bowersox is the faculty adviser.



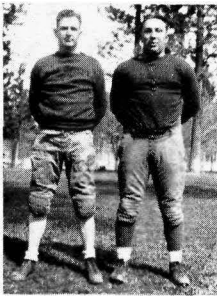
ATHLETICS

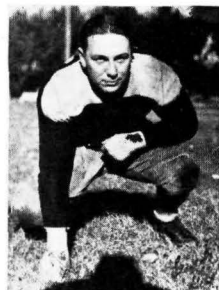
Football



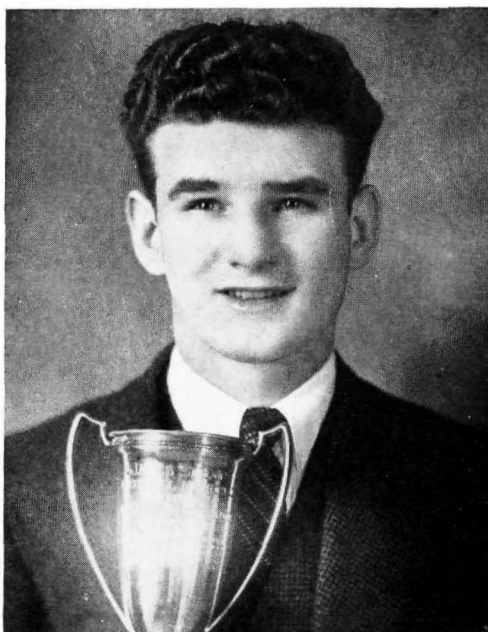
Gerald Stannard, our coach, has made a place for himself in the hearts of his men. He has endeared himself to all Whitworth through his excellent work and his fine personality. Mr. Stannard came to Whitworth with great records at both Cheney Normal and Ottawa University. He has used his experience to produce the finest athletic teams we have had for years.

Coach Stannard has aided greatly in the advance, started by Coach "Snowy" Gustafson, of better athletics at Whitworth and has helped build the foundation for future winning teams.

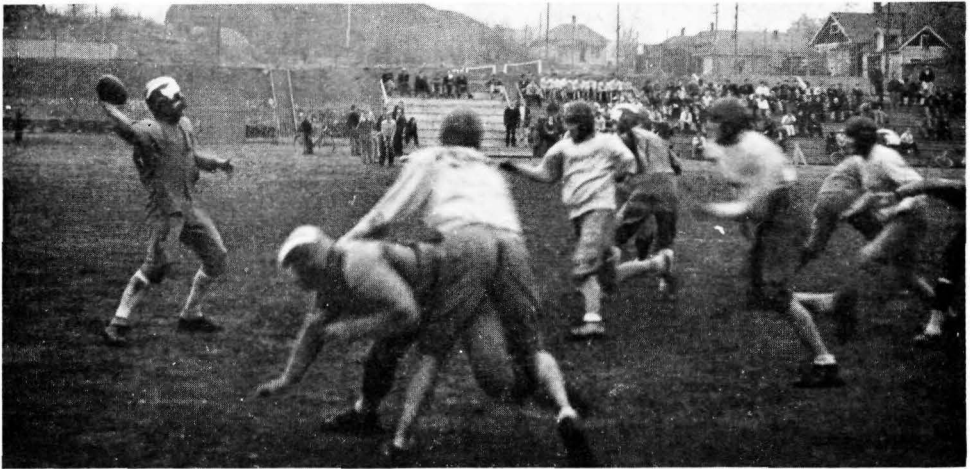




Paul Koper, a three-year letterman, and Robert Allison, a two-year letterman, were elected by the members of the football team as co-captains of the 1934 football season. Both men were outstanding among their teammates. Koper proved an indispensable part of the line, whereas Allison's punting and backfield work pulled the team out of some tough holes.



Howard Kroske, hard-hitting quarterback, was selected by his teammates as winner of the Snider Award for 1934. He was awarded this honor because he had that spark that kept the team going when they most needed inspiration.



Coach Stannard was handicapped in football by the fact that few men turned out, most of whom were without any previous football experience. Only six lettermen from last year's team were back. These twenty-four men composed the nucleus of this year's team. Twenty-four men composed the nucleus of this year's team, with Wilson as manager.

On September 22, under a downpour of rain, Whitworth had a six-quarter scrimmage with Cheney Normal at the Normal. Our men put up a good fight, although playing against a heavier and more experienced team. Every member of the team played this first game.

On October 6, at Helena, Montana, Whitworth played Intermountain Union. Because of an unfortunate penalty against Whitworth in the last five minutes of the game, the



KIEFER

GAY

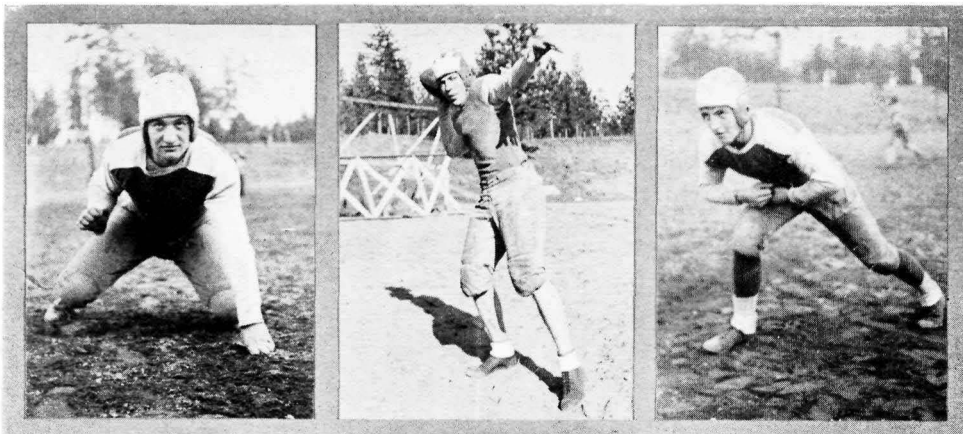
CALKINS



I. U. C. team defeated the Pirate eleven with a lone score of 6-0. Outplaying I. U. C. in every department, the Pirates were able to make more first downs than the Intermountain Union team.

The Pirates played Whitman at Walla Walla, Whitworth coming out on the short end of the score. Although the Pirates were probably not so well organized as their opponents, and had less reserves to pick from, they played a clean, hard game, fighting every minute. Whitworth suffered severely on penalties. A penalty against Whitworth placed the ball on the Pirates' three-yard line; it was then pushed over for Whitman's first touchdown.

Whitworth suffered a severe setback at Lewiston, when the Lewiston Normal Pioneers pushed over three touchdowns to defeat the Pirates.



EVENOFF

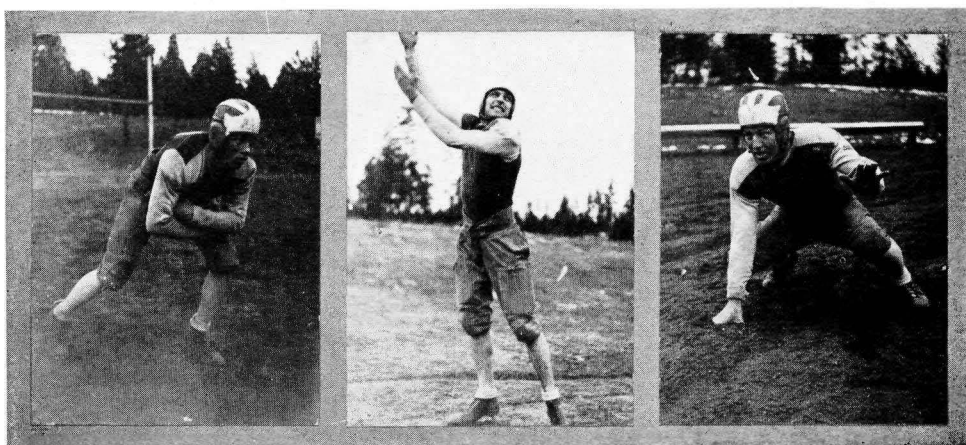
ALLISON

STCWELL



On October 20, Whitworth met the Eastern Oregon Normal eleven from La Grande, in a game played on our own field. The final score of 26-0 was due to a superior passing attack launched by the teachers, which proved too much for the Pirates. Several costly fumbles, attributed to inexperience, helped defeat Whitworth.

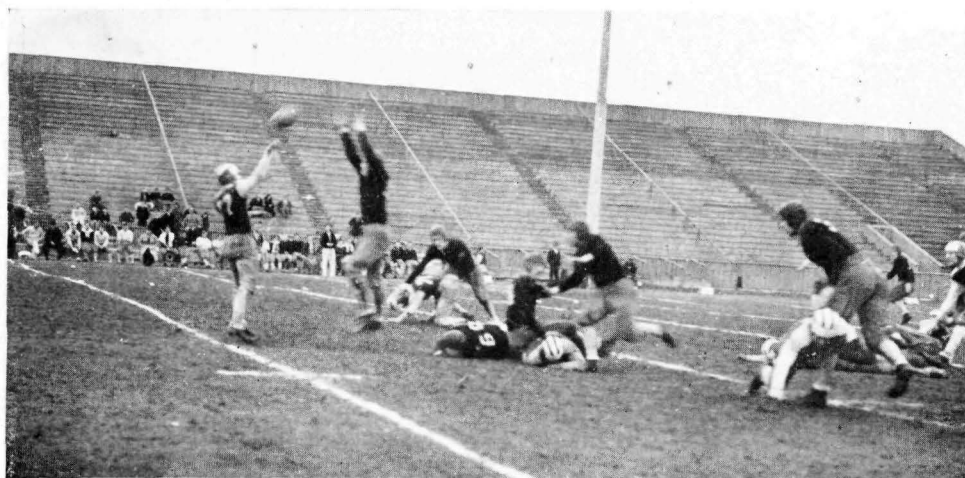
The Whitworth Home-coming, on November 3, proved a big success, although the score of the football game was against us. Whitworth was defeated by the Lewiston Normal Pioneers in the second game of the season with them, 19-7. Whitworth started out to what looked like a sure victory. Completing several long passes and making short gains on line plunges, the Pirates placed the ball on the Lewiston ten-yard stripe. Kroske



HUNTLEY

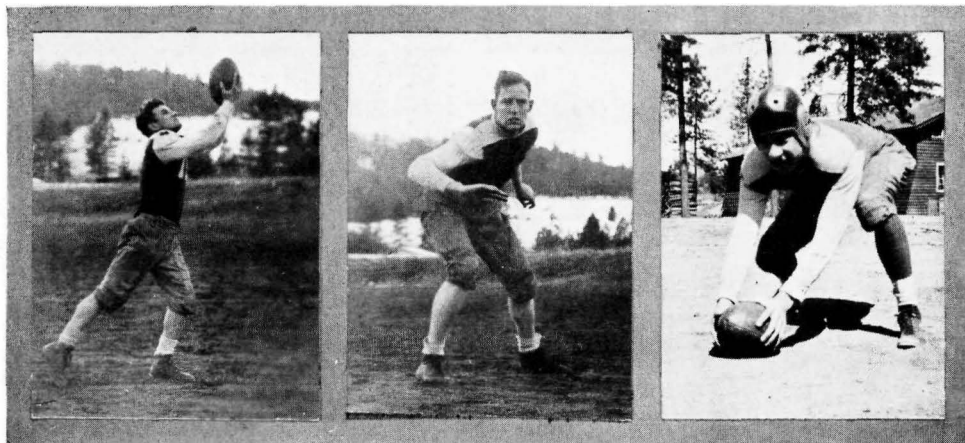
HALE

SCHMIDT



bucked it across from here for the first score of the game. The Pioneers, forced to make use of their strong reserves, came back late in the game to score their hard-won touchdowns to win.

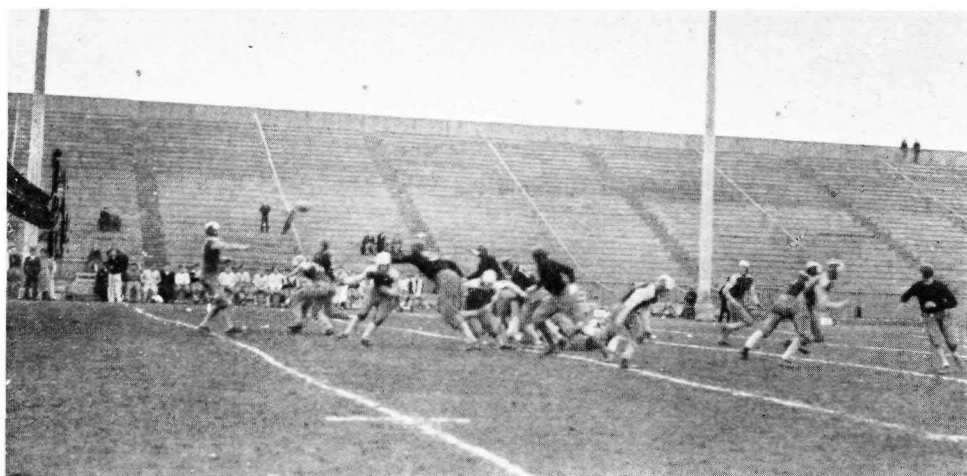
On November 9, Whitworth was defeated by the Ellensburg Normal at the Rodeo grounds in Ellensburg. It was a hard-fought battle on a muddy turf, with Bob Allison outkicking Ellensburg's star kicker by averaging about 45 yards on his punts. Most of Whitworth's first downs were made on beautifully executed lateral passes and forward passes intermingled.



KROSKE

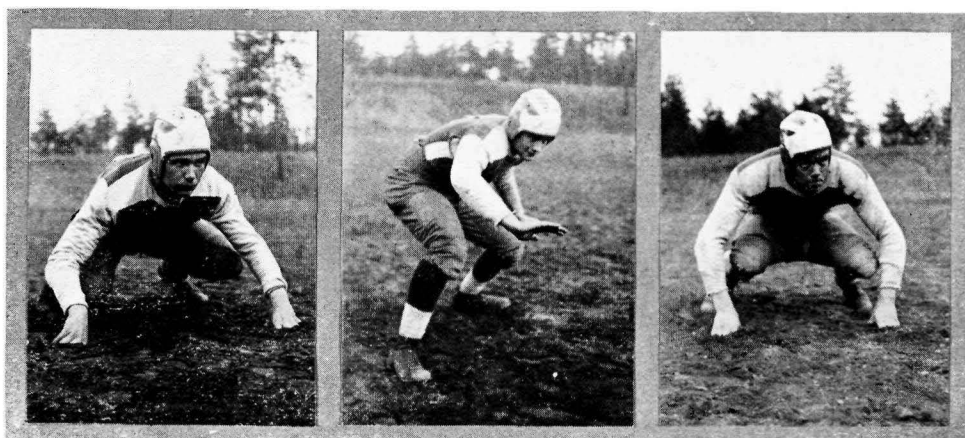
M. HALE

DUMM



On November 17, at Gonzaga Stadium, the strong Gonzaga frosh team overpowered the Pirate eleven, Whitworth being unable to score. As this was the last game of the year, Whitworth was out to win; but the numerous injuries that followed the team all season seemed to reach their height in this game, causing the crippled Pirates to go down to a glorious defeat. Every man played well and deserved the praise given the team as a whole by the spectators. Howard Kroske deserves special mention: although the smallest man on the field, he was the outstanding player of the day.

This Gonzaga game ended the football season, which, considering the great odds under which the Whitworth men played, was very successful.



TAYLOR

CRAMER

FACKENTHALL

Basketball



This basketball season proved to be a great success. With five lettermen back, Coach Stannard produced the best Whitworth basketball team in the history of the college.

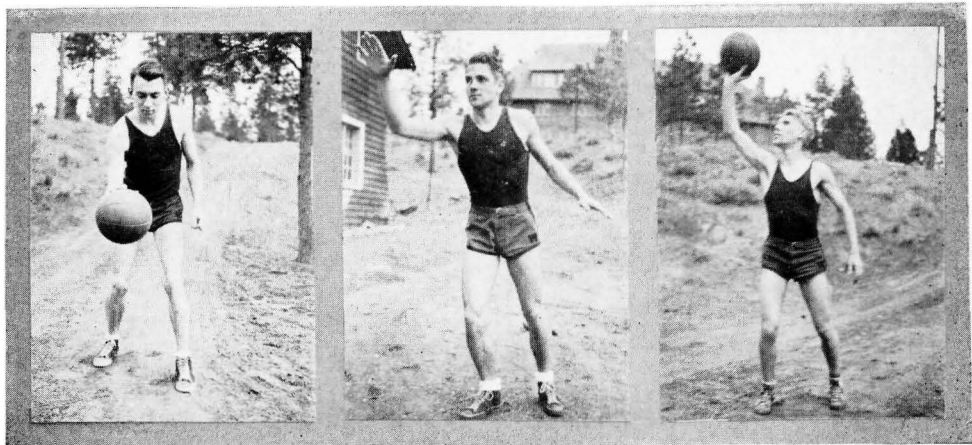
Although the basketball team was late in starting its practice, it won its first game, on December 20, from the Hillyard Independents, 34-22.

On January 3, the Pirates defeated Rathdrum, 38-19.

The Whitworth quintet next downed the St. Paul Methodist team, 37-25.

Lewiston Normal, taking advantage of several leg injuries to members of the Pirates' first team, won the first game of the series on the Whitworth floor on January 12.

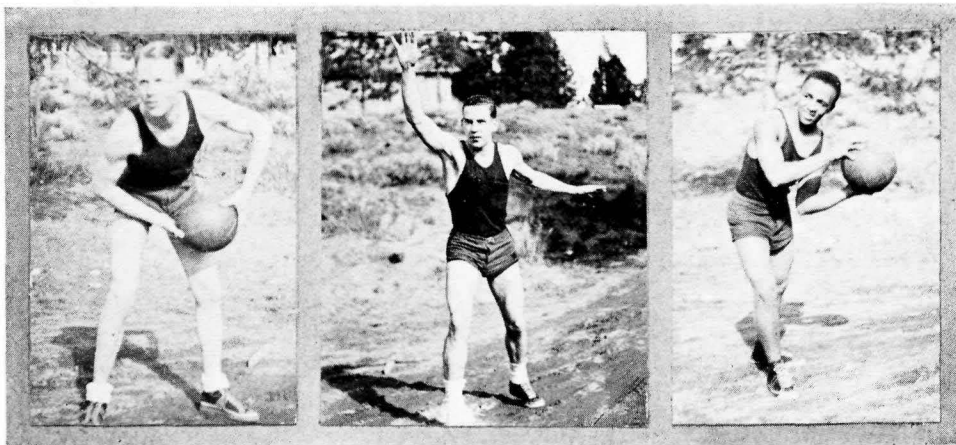
Whitworth took both games of the series with Coeur d'Alene Junior College.



DUMM

JENSON

WILLIAMS



LUENOW

ALLISON

REED

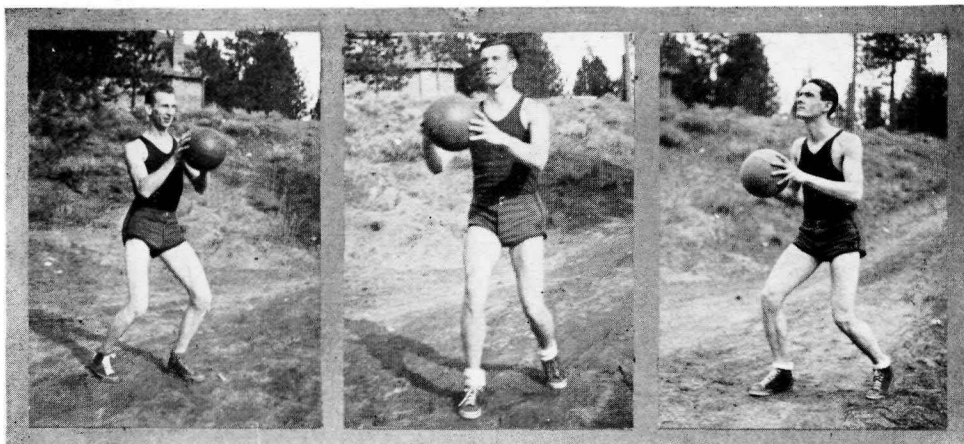
The team that proved to be a jinx to the Pirates was the Cheney Normal Papooses. The Pirates couldn't put a whole first team against the teachers all season.

The Whitworth quintet beat, 34-33, the one team they would rather lick than any other, the Lewiston Normal five.

Whitworth took the strong Yakima Junior College five in the Pirate gym by a score of 38-34.

Playing inferior ball, Whitworth went down to defeat three times at the hands of the strong Gonzaga frosh quintet.

The basketball team should receive highest praise for the magnificent showing they made this year.



KOEHLER

FLEMING

PENHALURICK



MARK KOEHLER

The Pirette Inspirational Medal was awarded Mark Koehler, who had more points per game than any other man on the team.

Robert Allison was elected captain of the basketball team by his team-mates. Bob is a three-year letterman, a man that the team could always depend upon.

Whitworth.....	34	Hillyard Independents	22
Whitworth.....	38	Rathdrum	19
Whitworth.....	37	St. Paul Methodist	25
Whitworth.....	22	Greenacres Athletic Club.....	30
Whitworth.....	30	Lewiston Normal.....	57
Whitworth.....	14	Cheney Normal Papooses.....	36
Whitworth.....	29	Coeur d'Alene J. C.	25
Whitworth.....	29	Greenacres Athletic Club.....	45
Whitworth.....	35	Rathdrum	28
Whitworth.....	25	Cheney Normal Papooses.....	37
Whitworth.....	30	Gonzaga Freshmen	42
Whitworth.....	43	Chewelah	24
Whitworth.....	48	Coeur d'Alene J. C.	23
Whitworth.....	36	Kinman Business University.....	16
Whitworth.....	29	Cheney Normal Papooses.....	35
Whitworth.....	34	Lewiston Normal.....	33
Whitworth.....	24	Cheney Normal Papooses.....	26
Whitworth.....	17	Chewelah	34
Whitworth.....	16	Gonzaga Freshmen	49
Whitworth.....	38	Yakima Junior College.....	34
Whitworth.....	29	Gonzaga Freshmen	49

Total points: Whitworth 646, Opponents 624.

Baseball and Tennis



Baseball

With only six lettermen reporting for practice this spring, baseball prospects looked poor. The lettermen turning out were Chatterton, Kroske, and Allison, from the 1934 squad; Fariss, Fancher, and Miller, from that of 1933. Reserves from last year's team were Fackenthall, Seifert, and Cramer. Ray suffered a broken ankle early in the season. Gay, Sommers, Williams, Reed, and Nasburg were all new men. Stowell was this year's manager.

Lack of a strong pitching staff greatly handicapped the team all season. Reed proved to be a find when he pitched a two-hit game against Coeur d'Alene, Whitworth winning 1 to 0.

Whitworth took the strong Coeur d'Alene Junior college team in the first game by a score of 9 to 5. The batting averages of the six highest men up to the first Coeur d'Alene Junior college game were:

	A.B.	H.	Per Cent
Reed	29	12	.414
Sommers	27	9	.409
Chatterton	24	9	.375
Miller	25	9	.360
Allison	26	9	.346
Kroske	19	6	.315

Chatterton has been the best base hitter of the squad with one home run, twenty-three three-base hits, and four two-base hits. Home runs have also been hit by Reed and Sommers.



Tennis

The tennis squad had to be built up around the two men returning from last year's squad, Koehler and Penhalurick. Macintyre, a man that the coach was depending on, was lost to the squad by illness. Koehler and Penhalurick cinched first and second places respectively through their experience. The men following them, in order of rank, are Trunkey, Barnes, Tooke, Rorberg, Dumm, Cople, Fariss, Gronemeier, and Totten. The first six men make up the squad. Rorberg is manager.

Whitworth played a practice match with Gonzaga and a scheduled match with Cheney, which the Pirates won 5 to 3.

Whitworth		Cheney	
Koehler	6—0	6—1	Kidwell
Penhalurick	6—2	6—4	Lindquist
Trunkey	6—2	6—4	Nelson
Barnes	7—9	0—6	Miller
Tooke	0—6	3—6	Buckley
Rorberg	0—6	0—6	Mooers

Doubles: Penhalurick and Koehler 4—6, 6—4, 6—0, Nelson and Miller. Whitworth 5—3 Cheney.



Interclass Basketball

The direction of interclass basketball was given to the Upperclass Men's Association this year by the "W" Club. Interclass basketball has proved a great deal of fun for both spectators and players. Most of the games turned out to be brawls because of lack of refereeing.

Big "Doc" Hale proved a great attraction on the senior team, with Fariss, Koper, Macintyre, and Chatterton as the mainstays of the team.

The sophomores had a good team, with Roger Hale, Howard Kroske, Loren Hatcher, Charles Frazier, Clark Cople, and George Hendrick as players.

The freshmen, although they won only one game, gave the other team the best of competition. The frosh team consisted of Reel, Tooke, Colpitts, Coleman, Trunkey, McArthur, and Seifert.

We hope that the good showing of interclass basketball will start a much needed constructive program of interclass sports.

	Won	Lost
Upperclassmen	5	1
Sophomores	3	3
Freshmen	1	5



Helen Wilson
Secretary

Christine McDonald
President

Florence Moore
Vice President

Jean Campbell
Treasurer

Women's Athletic Association

The Women's Athletic Association has charge of all sport activities of women of the college. Each semester it sponsors a W. A. A. mixer for the purpose of acquainting new women students with the organization and its members. In the fall it sponsors the annual football banquet and in the spring, an April Frolic.

Officers of the club are: Christine McDonald, president; Florence Moore, vice president; Helen Wilson, secretary; and Jean Campbell, treasurer. Heads of the sports are: Dorothy Reed, hiking; Pauline McCallum, volley ball; Jean McDonald, basketball; Zena Norton, baseball; and Eleanor Henderson, tennis. Mrs. Orpha Helm Hedrick is the faculty adviser.



Christine McDonald was awarded a black sweater with three red stripes for having earned 900 points. Red chenille "W's" were awarded to Zena Norton and Jean McDonald for earning 500 points. The following women won 100 points in volley ball: Pauline McCallum, Jean McDonald, Zena Norton, Virginia Larsen, Gladys Halstead, Dorothy Reed, Christine McDonald, Edabelle Hall, Helen Ludwigson, Eleanor Henderson, Elizabeth Baumgartner, and Janet Jackson.

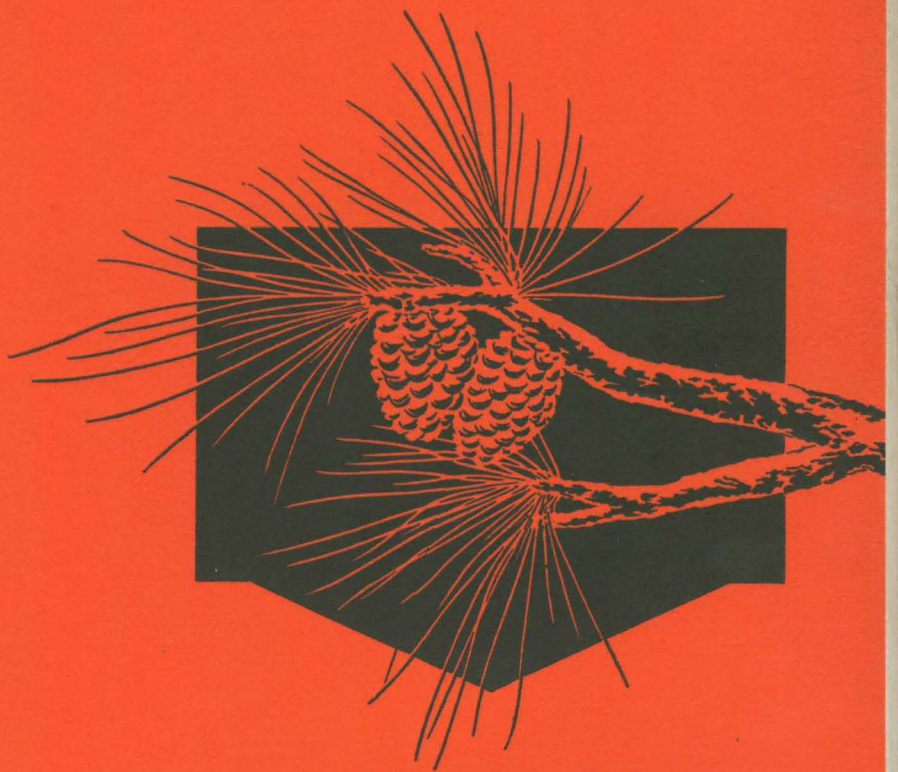
Points for hiking were earned by Zena Norton, Pauline McCallum, Christine McDonald, Dorothy Reed, and Jean McDonald. Basketball points were earned by Ann Pillers, Virginia Larsen, Dorothy Reed, Christine McDonald, Edabelle Hall, Jean McDonald, Earleen Schiewe, Zena Norton, Eleanor Henderson, Pauline McCallum, Hazel Barnes, Margaret Clapp, and Margaret Robbins.

Pines

*Against the sky in winter,
How royal, steadfast, green!
Athwart the moon in summer,
A faery tree serene.*

*With dancing lace for needles,
Within whose depths there seems
To lurk all age-old wonders
And fabrics for my dreams.*

*How long have those broad branches
Been lifted to the sky?
A sentry dark and faithful
To watch the stars go by.*



ACTIVITIES

A. S. W. C.



Keith Murray
President A. S. W. C.

To Keith Murray, Natsihi makes its bow in appreciation of his work as President of the Associated Students. A fine combination of business ability and good-fellowship has assured him the co-operation of the student body, and his leadership has been outstanding.



Paul Koper Jo Schrap Dan Fleming Christine McDonald
Ann Pillers Graham Potter Murdock Hale

Executive Board

Upon the shoulders of the Executive Board have rested the many problems of student activities and life, which they have handled efficiently and well.

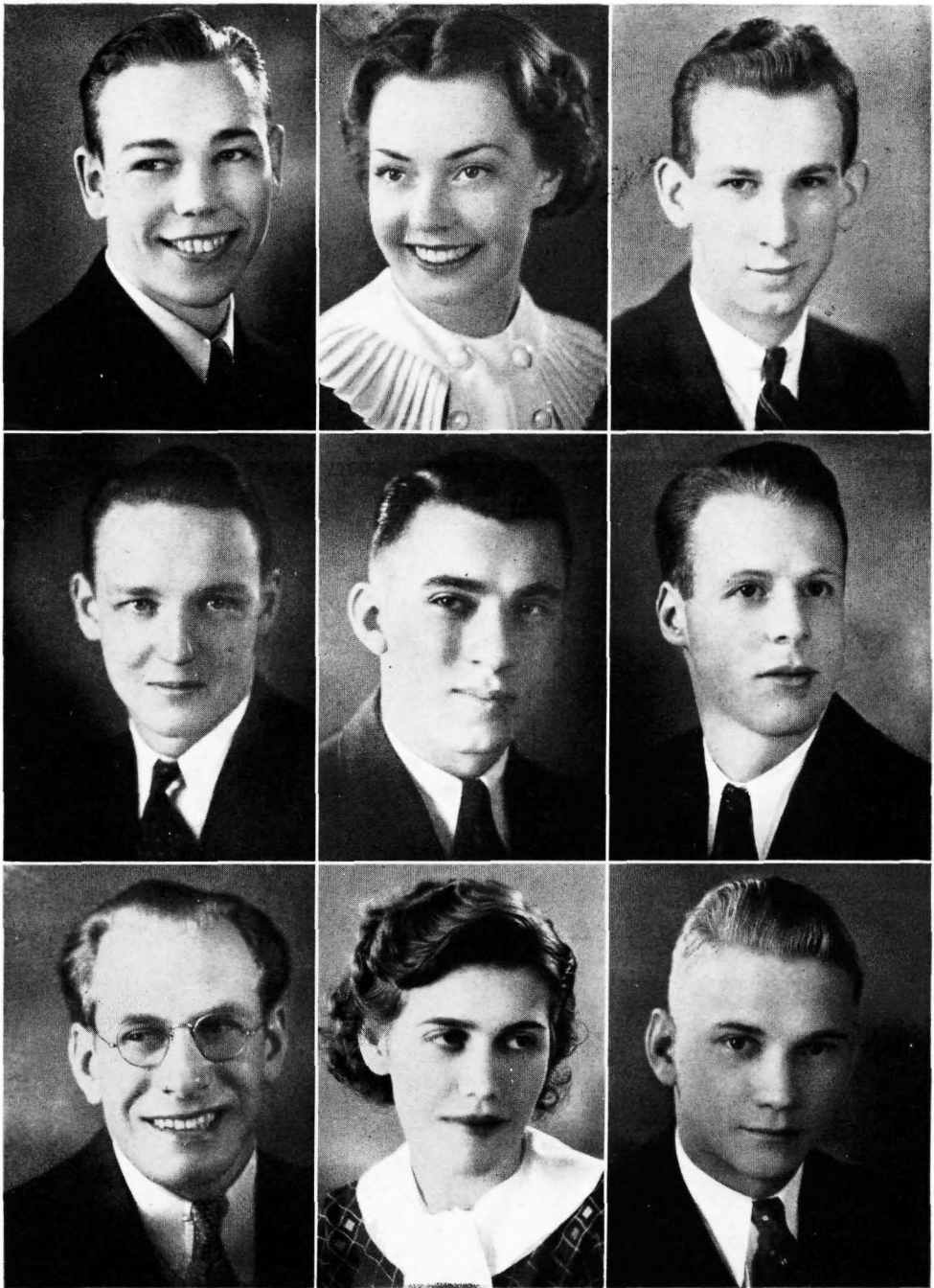


Elise Aldrich Mark Koehler Nell Blair
Lowell Poore Ann Pillers Earleen Schiewe Graham Potter

Promotional Committee

The Promotion Committee is one of the live groups of the college, being responsible for the financial success of various activities.

Natsihi Staff



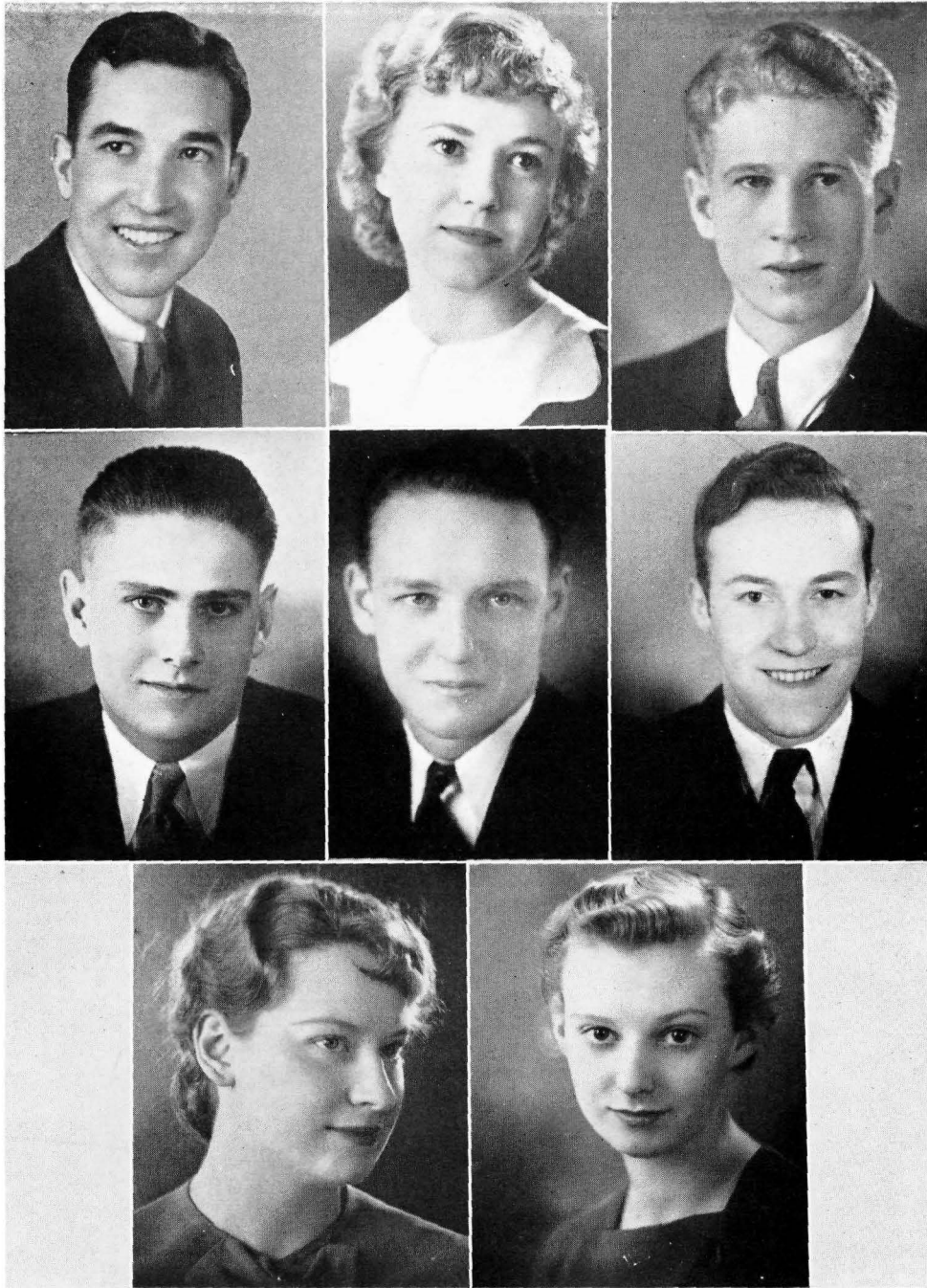
Top row—Fred Winkler, Business Manager; Florence Moore, Editor; Mark Koehler, Assistant Editor
Second row—John Schlomer, Advertising; Robert Dumm, Assistant Advertising; Allyn Luenow, Sports
Third row—Charles Weimer, Assistant Snapshot; Hazel Barnes, Society; Art Rorberg, Snapshot

In preparing the 1935 *Natsihi*, the staff has endeavored to bring before you not only the activities, but also the exquisite setting of Whitworth, as it stands among the tall pines, surrounded by natural loveliness.

If you who turn these pages catch the inspiration of beauty, we are more than repaid for our labor.

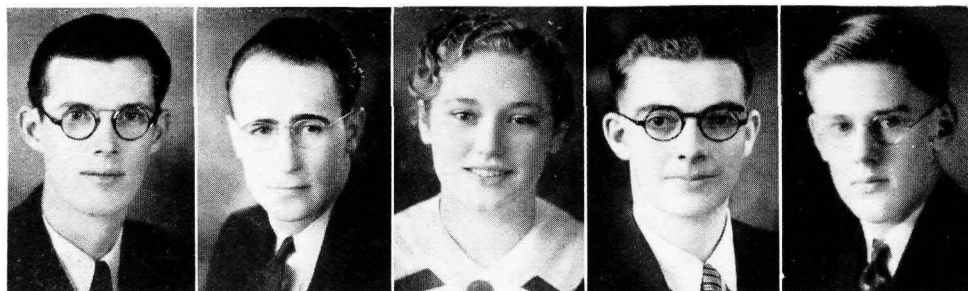
The Editor.

Whitworthian Staff



Top row—Ned Chapman, Editor; Jo Schrap, Assistant Editor; Morris Wilson, Business Manager
Second row—Ray Cramer, Sports; John Schlomer, Advertising; Loren Hatcher, News
Third row—Ann Pillers, Society; Eleanor Henderson, Sports

The joys and the sorrows of journalism are well known to the *Whitworthian* staff, who have published the official college paper faithfully and well. Under the joint direction of Ned Chapman and Jo Schrap, the *Whitworthian* has made its regular appearance and has reflected the spirit of Whitworth in the excellence of its pages. Miss Helen Magill is the faculty adviser for the *Whitworthian* and *Natsihi* staffs.



Keith Murray

Mel Fariss

Nell Blair

Graham Potter

Phil Walborn

Debate

The Whitworth debate squad had a very successful season this year. They won seven out of nine decision debates and participated in fourteen non-decision debates.

A tournament was held at Whitworth in January, in which about thirty-five teams participated. Gonzaga University, Washington State College, and Whitworth College tied for first place on a basis of undefeated teams; whereas Whitworth had the highest squad percentage of wins.

At the close of the season pins were awarded as follows: Keith Murray and Mel Fariss, third-year awards; Graham Potter and Philip Walborn, second-year pins; and Nell Blair, first-year pin. Dr. LaVerne K. Bowersox is the faculty adviser, and Graham Potter is the manager.

Organizations

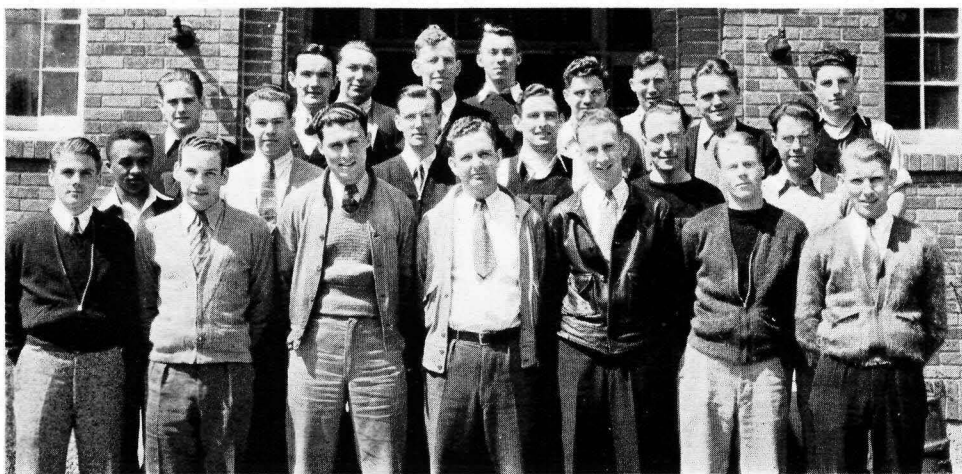


Pirette Club

The Pirette Club, the young women's pep organization of the college, has a limited membership of thirteen sophomore and junior women. The group aims to promote interest and pep for all college functions.

In March, a successful "Green Derby" was sponsored jointly by the Piresses and the "W" Club. This year the group presented the Piressite Inspirational Award to the member of the basketball team who proved the most inspiration to his teammates.

Officers during the fall semester were: Dorothy Cramer, president; Jean Campbell, vice president; and Florence Moore, secretary. Officers for the spring semester were: Mary Baker, president; Pauline McCallum, vice president; and Elise Aldrich, secretary. Miss Leila E. Moore is the faculty adviser.



"W" Club

The "W" Club is composed of the lettermen of the college. The group has been active during the year. It sponsored a fine pay convocation for the purpose of raising money with which to buy medals for the winners of the Snider Memorial cup. The "Green Derby" was sponsored jointly by the Pirettes and the "W" Club. In order to raise money for the annual basketball banquet, the group sponsored a basketball game between the "Faculty" and the "Student Invincibles." Improvement of the football field is the major project which the "W" men are working out this year.

Officers of the club for the year were: Boo Miller, president; Al Luenow, vice president; Mark Koehler, secretary; Scott Chatterton, treasurer; and Bob Allison, sergeant at arms. Leslie Hedrick is the faculty adviser.

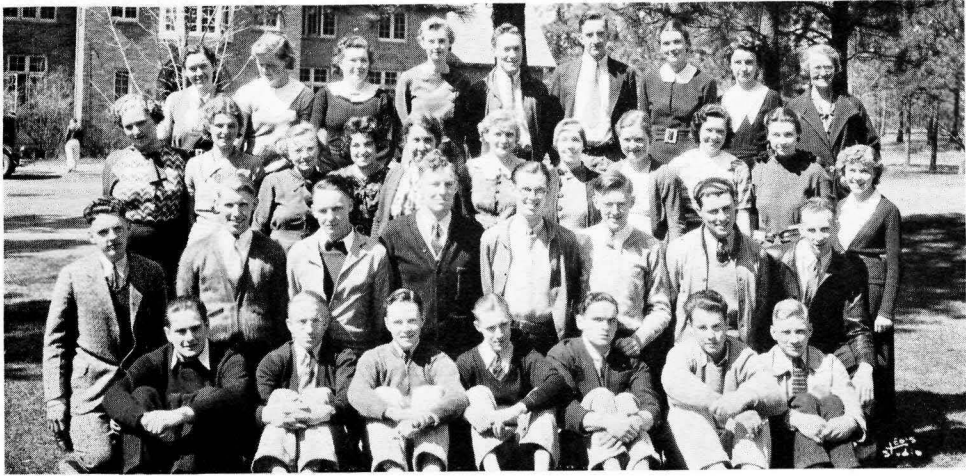


Whitworth Players

The Whitworth Players, dramatics organization, formed last fall, has charge of all plays presented by the college.

On November 21, the three-act comedy, "Charm," by John A. Kirkpatrick, was presented. Four one-act plays were given this spring: "The Wedding," by John A. Kirkpatrick; "Drums of Oude," by Austin Strong; "Grandma Pulls the Strings," by E. B. Delano and D. Carb; and "Thursday Evening," by Christopher Morley. A student director assisted Miss Vera Alice Paul, director of the club, in each production.

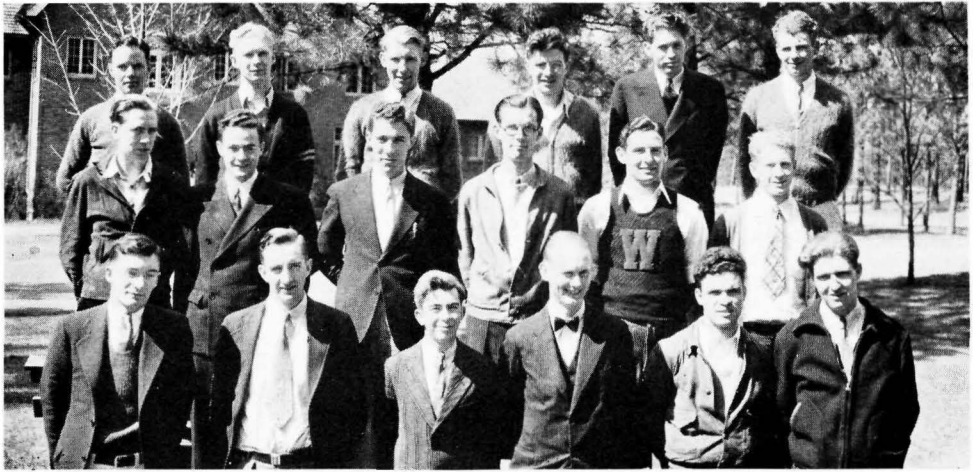
Officers of the organization are: Elise Aldrich, president; Larry McDonald, vice president; Aimee Russell, secretary; and Charles Frazier, treasurer. The faculty adviser is Miss Vera Alice Paul.



Art Club

Whitworth College Art Club is composed of students who are interested in furthering their knowledge of the Fine Arts. Members are pledged to the advancement of cultural objects in life. During the year the club sponsors a number of programs, presented by guest artists.

Officers of the club are: Eleanor Henderson, president; Clark Copple, vice president; and Audrey Simmons, secretary-treasurer. The faculty advisers are Mrs. Winifred McNair Hopkins, Miss Vera Alice Paul, and Prof. George B. Williston.



Ballard Hall

The Ballard Hall group is composed of the men who live on the campus. Each quarter a dorm manager is elected by the members. Dorm managers for 1934-1935, in the order of their terms, are: George Hendrick, Bill Williams, Roger Hale, and Morris Wilson. This spring semester Ed Nasburg has been dorm secretary.

Ballard "Open Dorm" is held by the men each spring. A program is presented, refreshments are served, and guests are privileged to view the rooms.



Upperclass Men's Association

The Upperclass Men's Association of Whitworth was organized last fall for the purpose of promoting college spirit and of acting in any matter that would tend to improve the feeling of fellowship.

Officers are as follows: Paul Koper, president; Douglas Macintyre, vice president; and Bob Allison, secretary-treasurer. Board members are Paul Gustafson, Graham Potter, Murdock Hale, and Howard Kroske. Prof. H. L. Hussong is the faculty adviser.



Sefelo

"Sefelo" is the organization of women students of Whitworth who live at McMillan Hall. The name "Sefelo" is taken from the first two letters of the words, "service," "fellowship," and "love."

All social life of McMillan Hall is governed by this group. Each fall Sefelo holds "Open Dorm," at which time a program is given, refreshments are served, and the guests have opportunity to view the rooms of the residents. The traditional Christmas party is given the evening before the students leave for their homes for Christmas vacation. This is one of the loveliest affairs of the year. "Heart Sister Week" is another unusual event sponsored by Sefelo. Each girl has a heart sister, for whom she does kind things all Valentine week. Several teas are given by the group in the spring.

Officers for the fall semester were: Earleen Schiewe, president; Anne Kamm, secretary-treasurer; Ann Pillers, social chairman; Jane Carpenter, reception room chairman; Georgia Patterson, laundry room chairman; and Margaret Close, house chairman.

Officers for the spring semester are: Ann Pillers, president; Tena Lathrop, secretary-treasurer; Jane Carpenter, social chairman; Genevieve Glenn, laundry room chairman; Margaret Clapp, reception room chairman; and Esther Miller, house chairman.



Modern Language Club

The Modern Language Club is composed of students of the college who are interested in French or German. The club presented a number of programs during the year in which songs, stories, and other features concerning France and Germany were given. At Christmas time a lovely program was given, much of it in French and German. This spring the club sponsored an illustrated lecture on the Oberammergau Passion Play and German scenery, by Mr. Albert Arend. The club members also presented a program for the May meeting of the Whitworth Women's Auxiliary.

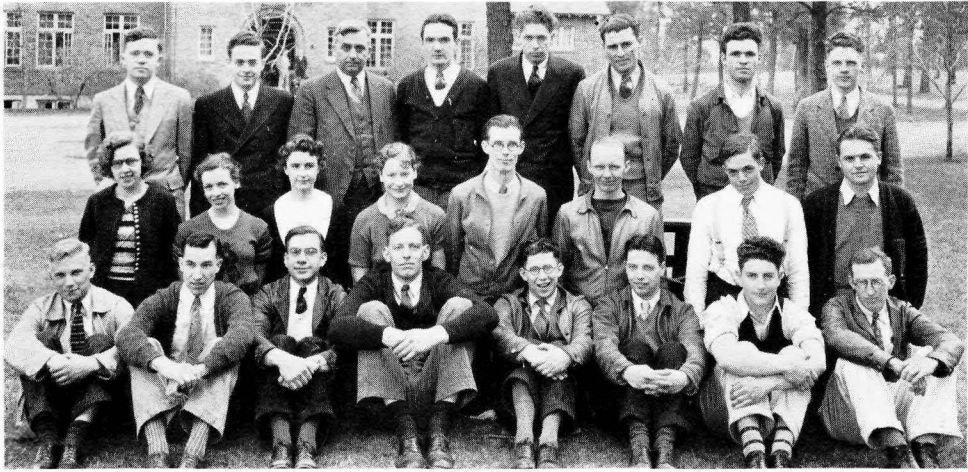
Officers are: Paul Gustafson, president; Anne Kamm, vice president; Arthur Rorberg, secretary-treasurer; Fred Winkler, French section chairman; and Helen Ludwigson, German section chairman. Miss Helene Landsberg is the faculty adviser.



Alpha Beta

Alpha Beta Club, organized last fall, is the home economics club of the college. Its membership is made up of students who are interested in the aesthetic and cultural development of the home and the community. Among the many activities of the group are the following: Several firesides, a Christmas box for a needy family, a dessert supper with a guest speaker, a "bacon bat," and a formal banquet. The group also assisted with the Mothers and Dads' Night program and the May tea of the Whitworth Women's Auxiliary.

Officers of the club are: Audrey Simmons, president; June Seaberg, vice president; Frannie Johnson, secretary; and Elizabeth Baumgartner, treasurer. The faculty adviser is Miss Leila E. Moore.



Tau Sigma

Tau Sigma, the science organization of the college, has a membership of students who have had ten hours of chemistry, biology, or physics, or eight hours of mathematics. Scientific lectures and moving pictures on scientific subjects are given. Last fall Tau Sigma won the advertising contest for Homecoming.

Preston Swann is president of the club, and Dorothy Reed is acting secretary. The faculty advisers are Prof. B. C. Neustel, Dr. Leslie Hedrick, and Dr. K. W. Wegner.



Volunteer Fellowship

The Volunteer Fellowship has a volunteer membership of Christian students, who do Sunday deputation work, conducting services in the city and the surrounding district. They also assist in Sunday schools and young people's societies. The fellowship sponsored an Easter service this year, giving the play "Whom Seek Ye?" an adaptation from a medieval drama.

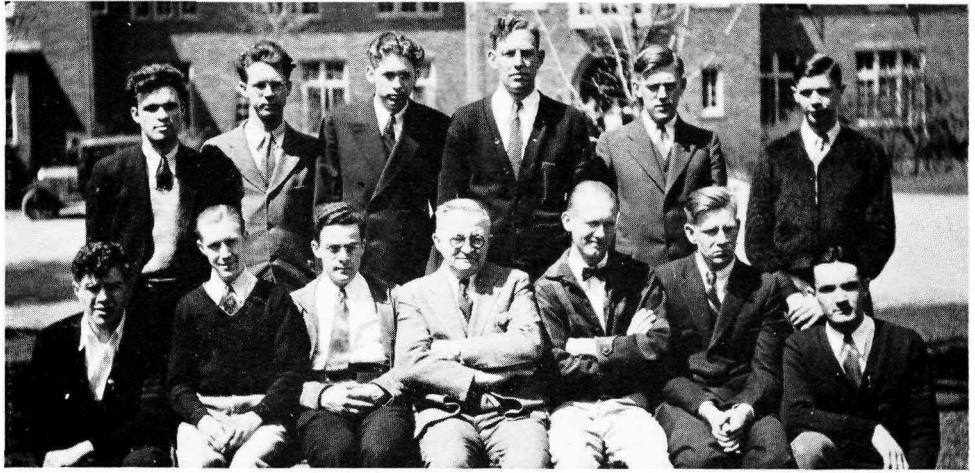
Harold Penhalurick has served as president for the year; Ralph Shanks as vice president the fall semester, and Burton Alvis the spring term; Bertha Davie as secretary; and Robert Reese as treasurer. Dr. J. W. Counterline is the faculty adviser.



Whitworth Christian Endeavor

The Whitworth Christian Endeavor is composed of students who make their home at the college. Organized under the regular rules of the United Society of Christian Endeavor, the society conducts regular Sunday evening meetings and mid-week prayer sessions.

Officers for the year were: Robert Reese, president; Marian Minnich, vice president; George Hendrick, secretary-treasurer; Paul Koper, prayer meeting chairman; Margaret Close, social chairman; Ann Pillers, lookout chairman; Burton Alvis, missionary chairman; and Clark Copple, music chairman. The faculty adviser is Dr. J. W. Countermine.



Pre-Ministerial Group

Young men who are in preparation for full-time Christian service compose the membership of the Pre-Ministerial Group. The members are often called upon to assist in the Sunday services at various churches.

Officers are: Newton Brunton, president; Neil Merwin, vice president; and T. C. McFeron, secretary. The faculty adviser is Dr. J. W. Counterline.



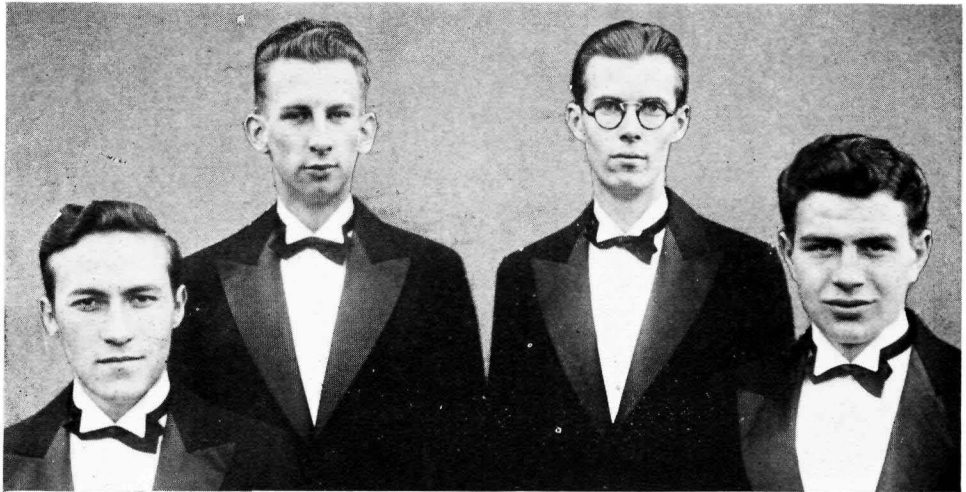
Chorus



Orchestra



Band



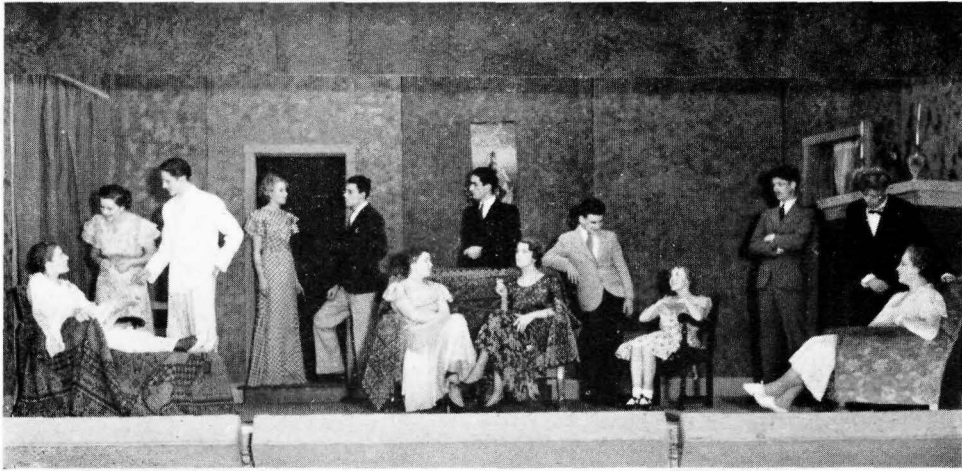
MEN'S QUARTET

Loren Hatcher, Mark Koehler, Keith Murray, Paul Koper



WOMEN'S QUARTET

Genevieve Wilson, Anne Kamm, Elise Aldrich, Earleen Schiewe, Dorothy Clifford



"Charm"

Under the direction of Miss Vera A. Paul, "Charm," the first production of the Whitworth Players, was presented in the College Auditorium November 27.

The play, an extremely clever three-act comedy, was written by John Kirkpatrick. The action centers in small-town people who "go charming" in a big way.

Those who played the principal parts were Larry McDonald as Joe; Elise Aldrich as Ida May Harper; Ethel Dawson as Mrs. Harper; and Charles Frazier as Mr. Harper.

Others in the cast were: Nell Blair as Belle Wilson; Earleen Schiewe as Mrs. Paxton; Harold Penhalurick as Claude; Bill Davis as Mr. Paxton; Wilma Timm as Violet; Aimee Russell as Mildred; Jo Schrap as Babe; Burton Alvis as Dr. Garfield; Howard Kroske as Rudolph Klein; and Scott Chatterton as Mr. Lester.

Measurement

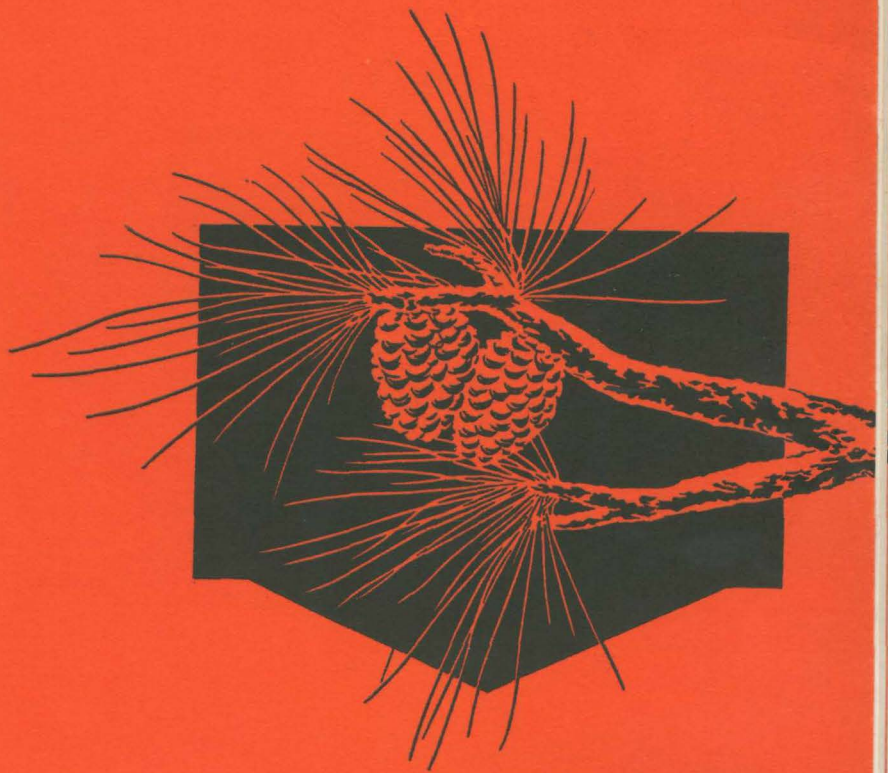
*Who measures man against a hill
Will find that he is humble still.*

*Tall pines against a western sky
Have wisdom I could profit by.*

*The grave sweet songs the hill brooks sing
Have themes they learned from every spring.*

*And there is reason why the thrush
Prefers for song the twilight's hush.*

*Let me be humble, then, before
The hills' high truth, the hill brooks' lore.*



CAMPUS

Green Derby Queen



Eleanor Henderson



Helen Wilson

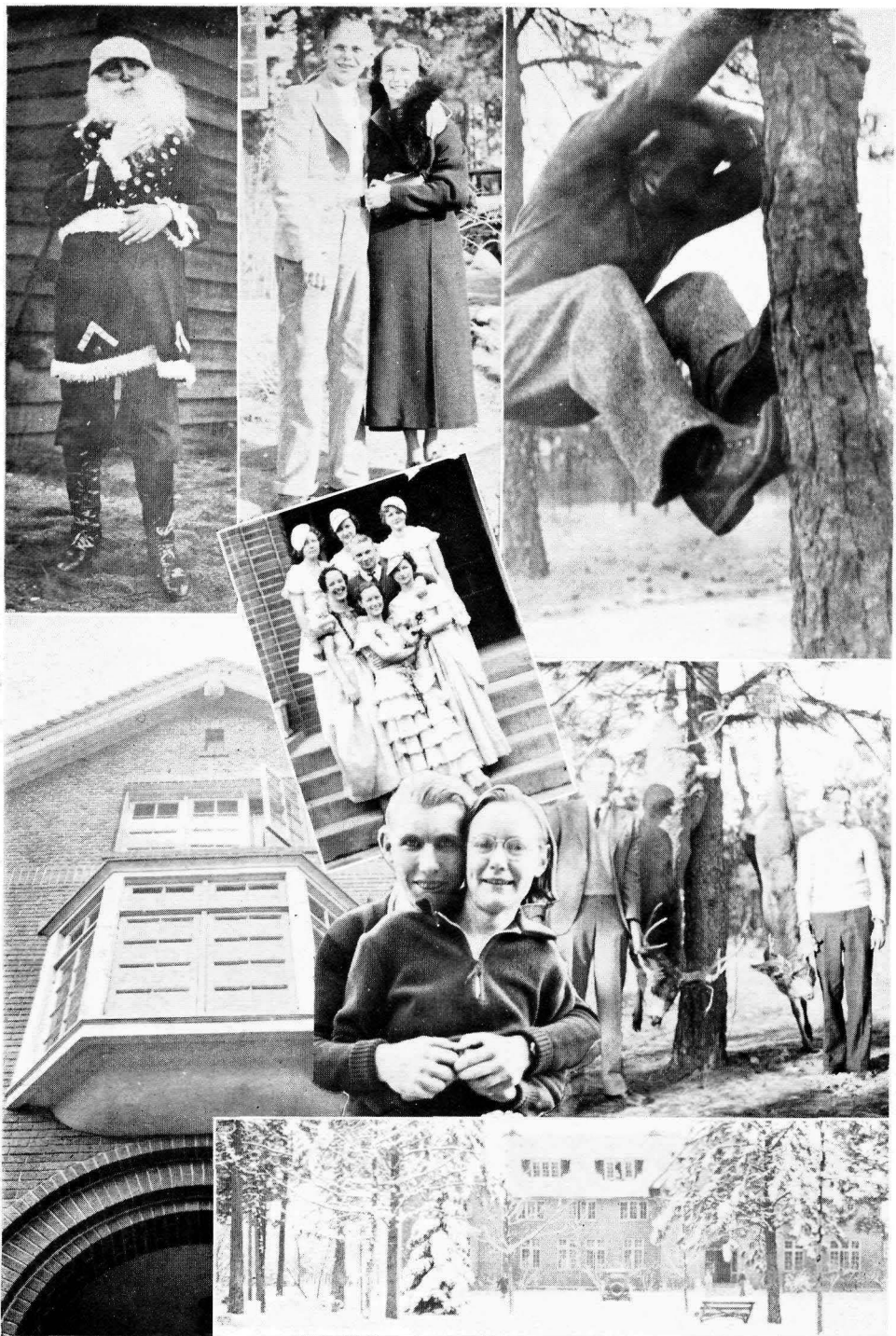
*May
Queen*

Attendants

Earleen Schiewe, Marguerite Moseley,
Genevieve Wilson, Dorothy Cramer
Helen Wilson, *Queen*, (sitting)





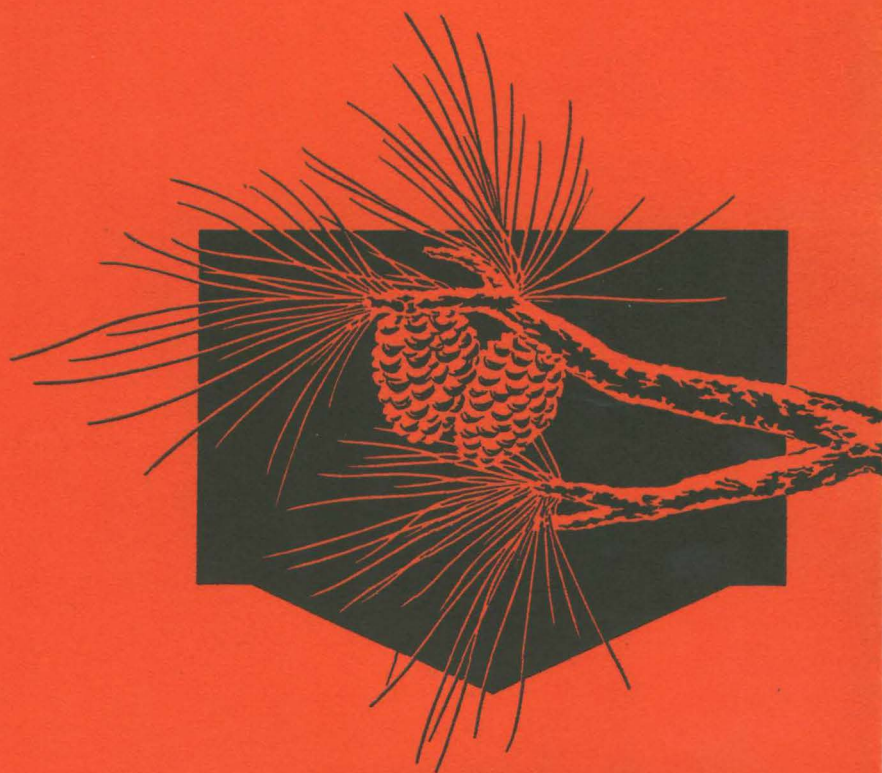












ADVERTISING



*So that You
need not guess*

*We maintain ample
equipment and an ex-
perienced art and
mechanical staff —*

*So that our patrons
need leave nothing to
chance*

**THE
SPOKANE AMERICAN
ENGRAVING COMPANY**
Established 1904

S. A. Wylie

Alfred W. Carlson

Wylie Carlson

Prescription Druggists

619 Sprague, Corner Wall

Phone Main 1188 Spokane, Wash.

Same



Girl—I maintain that love-making is just the same as it always was.

Boy friend—How do you know?

Girl—I just read about a Greek maiden who sat and listened to a lyre all evening.—Missoula County Times.

Eugene's Flower Shop

Riverside at Wall St.
Phone Main 3742

The Crescent
Phone Main 2341

Every Day Is Flower Day

Remember Your Loved Ones
With Flowers From Eugene's

Same

Bailey's House of Music

814 WEST SPRAGUE AVE.

Our New Location—Opposite Davenport Hotel



SHEET MUSIC

ORCHESTRATIONS

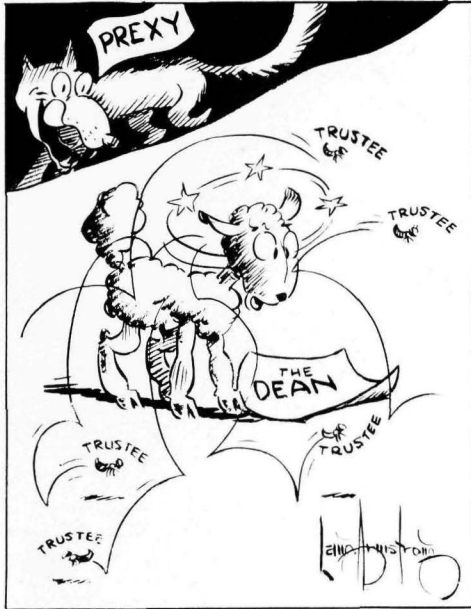
INSTRUCTION BOOKS

NEW and USED

BAND and ORCHESTRA INSTRUMENTS



Any Kind of Musical Instrument Repairing



"A Dream."

**WHITWORTH
SERVICE STATIONS**

1 and 2

HENRY MCINTURFF

Stop in and see us

GAS AND OIL

Wall Street Highway
Division Street Highway

Absolute Dependability in All Your

JEWELRY NEEDS

Our own factory on premises to
make and repair everything
in jewelry.

SARTORI & WOLFF, INC.

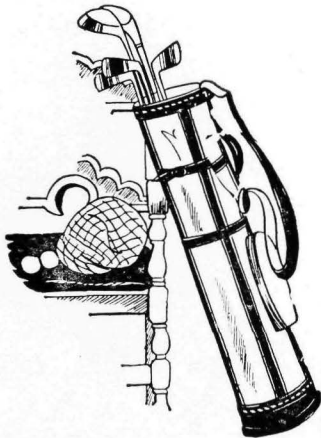
Makers of Fine Jewelry
N. 10 Wall St.

Same

John W. Graham & Co
If Its Made of Paper We Have It.

707-711 Sprague Ave.

708-716 First Ave.



OH BOY!

**We Sure Sell the
World's Best
Sporting Goods**

**Graham's Is the Walter
Hagen Golf Equipment
Store**

Everything for spring play
has arrived. Come swing the
new golf clubs. Make this
store your golf headquarters.
Hagen irons \$3.50 up
Hagen woods \$4.50 up
Hagen golf balls 25c
3 for \$1.00, 50c and 75c

**FAMOUS NOE GOLF BAGS
SOLD HERE EXCLUSIVELY**

These are the famous bags professionals know about. We
sell the entire line, priced \$1.75 to \$13.50.

WOMEN'S CADDY BAGS

3-stay, 5-inch style, of green, tan or brown Suedetex. Smart
in appearance, pull chain talon fasteners. Ball and vanity
pockets \$5.50

MEN'S CADDY BAGS

Half leather for durability and half web for the desired
lightness in weight. Leather re-enforced. Talon fasteners,
hood. Sole leather bottom. Immense ball pocket..... \$8.75

Start Fresh This Spring With Out-of-Doors Sporting Goods From Graham's Second Floor

Peters & Co.

Offering the Best in
Entertainment and Food

DESSERT HOTEL
Oasis & Roundup

She (petulantly) — “Jack,
you make love like an ama-
teur.”

He—“That’s where the art
comes in.”

Congratulations
Graduating Seniors



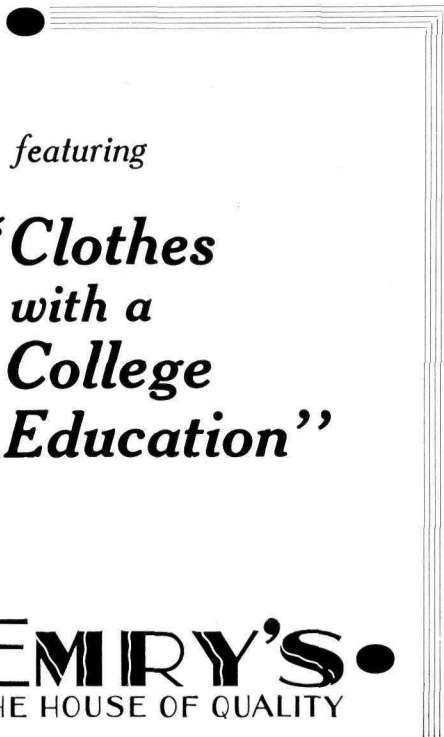
AND REMEMBER
LOWER
CLASSMEN

*We are always ready to serve
you in the same old place*

N. 218 Post St.

**Acme Stamp &
Printing Co.**

Main 3034



featuring

**“Clothes
with a
College
Education”**

EMIRY'S
THE HOUSE OF QUALITY

Multi Millions — “Is your
son home from college?”

Well Thye—“I presume so.
I haven’t seen my car for a
week.”

He — “I understand your
kisses speak the language of
love.”

She—“Yes?”

He—“Well, let’s talk things
over.”

same

*Quality is remembered
long after price has
been forgotten*

A & K Markets

Ritz Theatre

*Spokane's Greatest
Entertainment*

THE PICK OF ALL
BIG PICTURES

10c—Always—15c

Flowers

Make lives richer
Friendships
Warmer

Give flowers from the
SPOKANE FLORIST CO.
KIPP AND JANDL
Corner Sprague and Howard

**“Oh, George, I’m sorry I
called you Jimmy. I was think-
ing this was Thursday!”**

**Prof. — “Wake that fellow
next to you, will you?”**

**Student—“Aw, do it your-
self; you put him to sleep.”**

**Co-ed — “Why didn’t you
find out who he was when the
professor called the roll?”**

**Another Co-ed—“I did try
to, but he answered for four
different names.”**

The Character You Represent Should Be True to Nature

You will find a great help in consulting an experienced costumer for just such costumes, wigs and “make-up” materials required by you.

Miller-Dervant

Pioneer Costumers, Characterizers,
and Beauty Parlors

Main 6642.

1015-1017 Riverside

Congratulations

TO THE

**Graduating Class of
1935**

“Knowledge Is Power”

BURGAN’S

Every fine Portrait

IS A WORK OF ART RE-
FLECTING THE DESIRE
OF ITS ARTIST TO
CREATE "*that something*"
WHICH MONEY CAN
NOT BUY

Myer Studio

523 EAGLE BLDG.

Main 4981

PRINTING

**built up to a
standard ...
not down to
a price .. but
the price is
low because
the best is
the cheapest**

**INLAND-AMERICAN
Printing Co.
Telephone: Riv. 7155
E. 706 Sprague Avenue
Spokane, Washington**