

1-1-1940

Scenic Overland Route Souvenir Folder

Follow this and additional works at: http://digitalcommons.whitworth.edu/travel_books

Recommended Citation

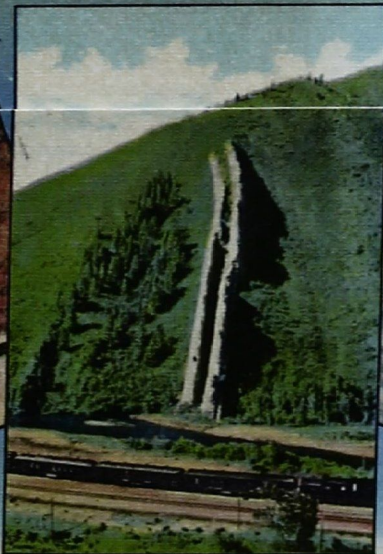
"Scenic Overland Route Souvenir Folder" Whitworth University (1940). *Travel Books*. Paper 7.
http://digitalcommons.whitworth.edu/travel_books/7

This Book is brought to you for free and open access by the Amrhein Collection at Whitworth University. It has been accepted for inclusion in Travel Books by an authorized administrator of Whitworth University.

Scenic Overland Route



BRYCE CANYON NATIONAL PARK, UTAH



DEVIL'S SLIDE, WEBER CANYON, UTAH



SUN VALLEY, IDAHO





Souvenir Folder
OF THE

POSTAGE

1½c

WITHOUT
MESSAGE

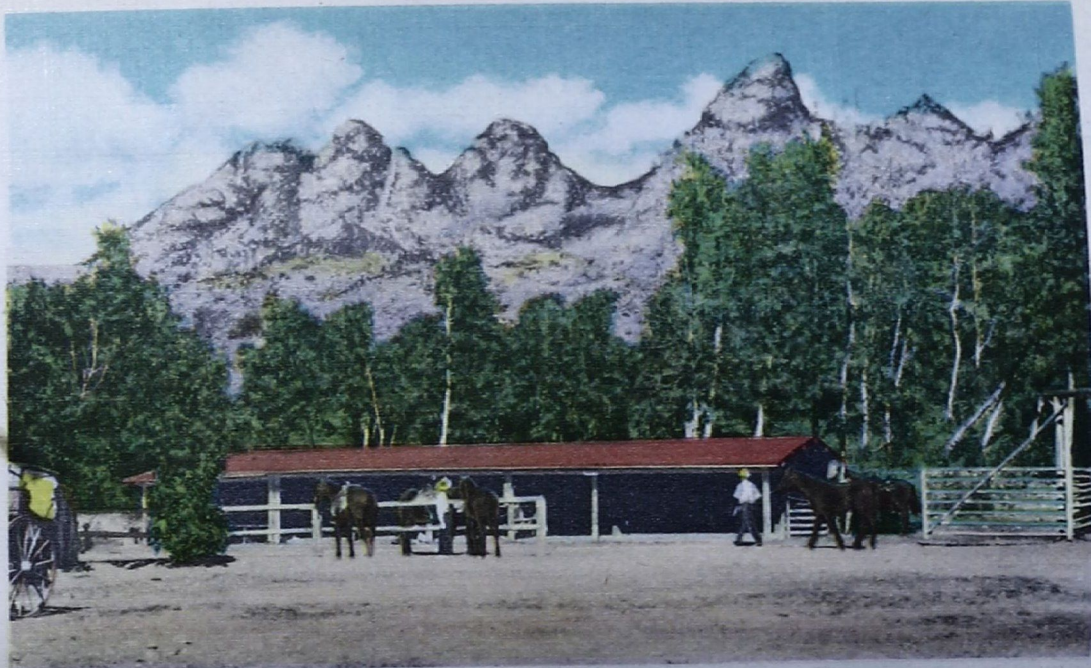
**OVERLAND
ROUTE**



"UNION PACIFIC STREAMLINER"

COPYRIGHT 1944 BARKALOW BROTHERS CO.

"ON UNION PACIFIC RAILROAD"



ON A DUDE RANCH IN JACKSON HOLE, WYOMING

"ON UNION PACIFIC RAILROAD"



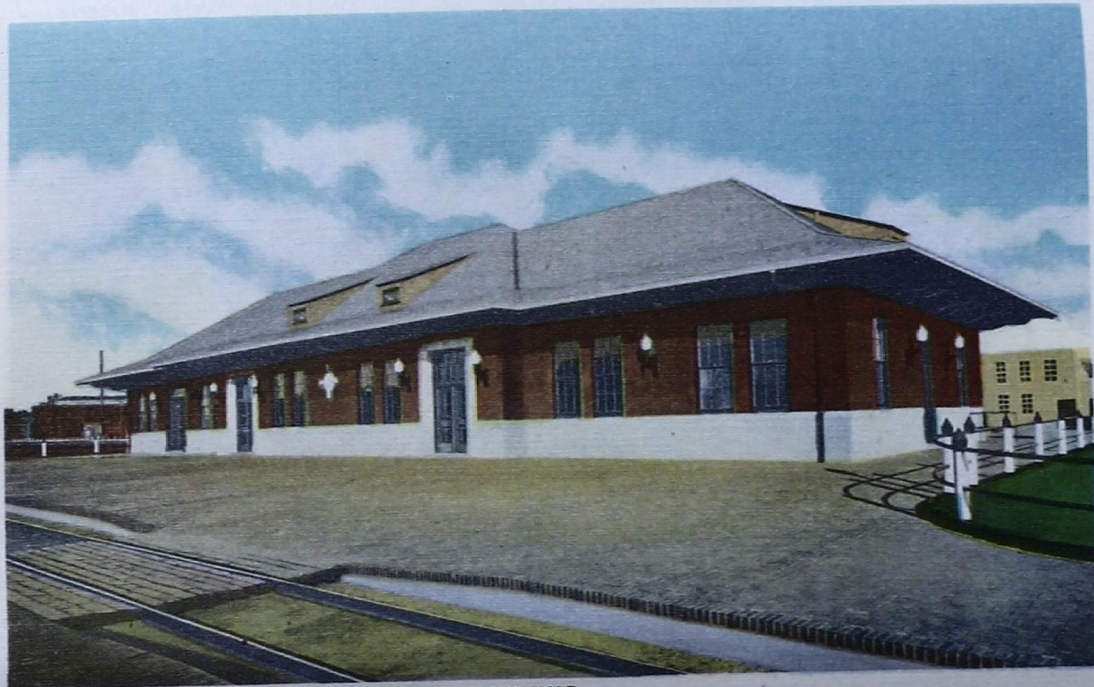
LAKE MARIE AND SNOWY RANGE, NEAR LARAMIE, WYO.

"ON UNION PACIFIC RAILROAD"



UNION PACIFIC "BIG BOY" WORLD'S LARGEST STEAM LOCOMOTIVE

"ON UNION PACIFIC RAILROAD"



UNION PACIFIC STATION. LARAMIE, WYOMING

BALANCED ROCKS. SHERMAN HILL, WYO.



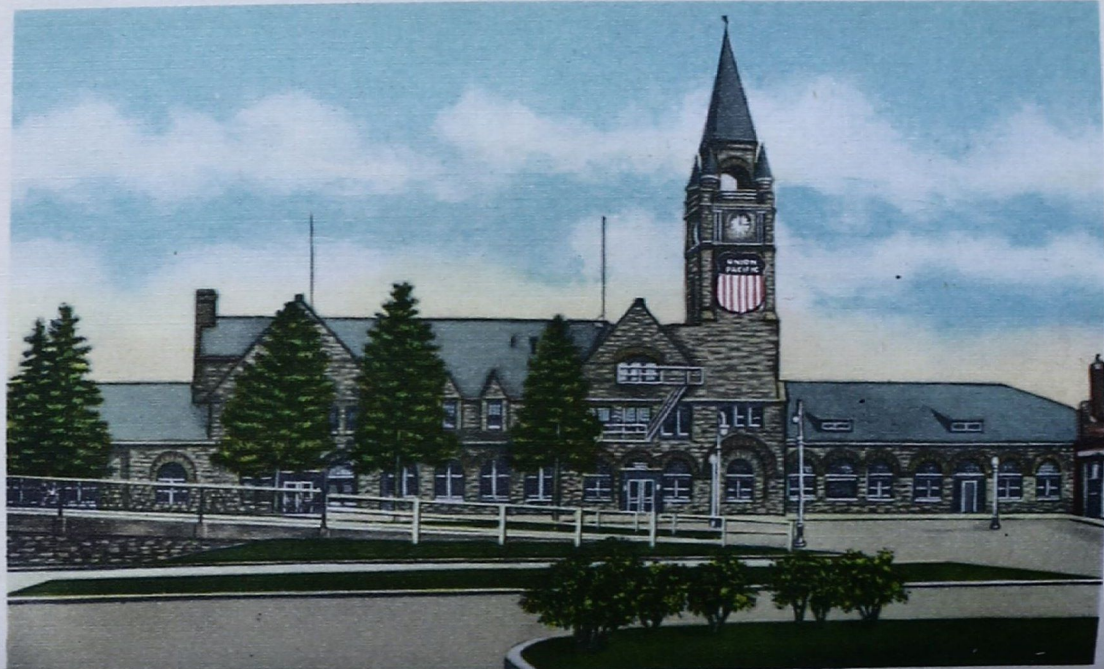
"ON UNION PACIFIC RAILROAD"

"ON UNION PACIFIC RAILROAD"



FRONTIER DAYS SCENE, CHEYENNE, WYOMING

"ON UNION PACIFIC RAILROAD"



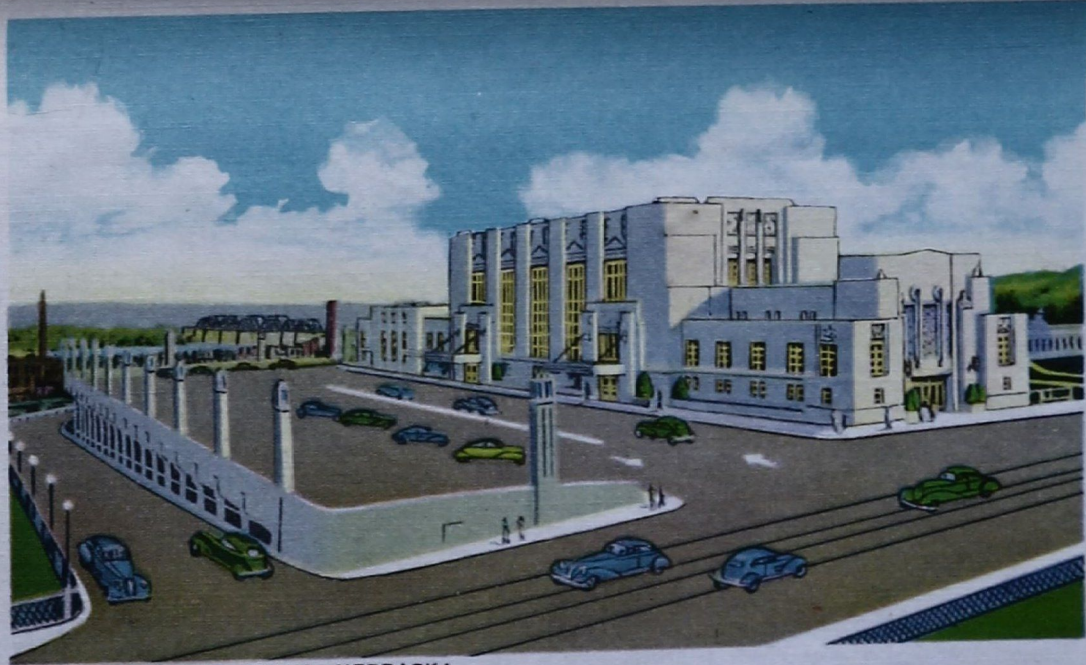
UNION PACIFIC STATION. STREET SIDE. CHEYENNE. WYO.

"ON UNION PACIFIC RAILROAD"



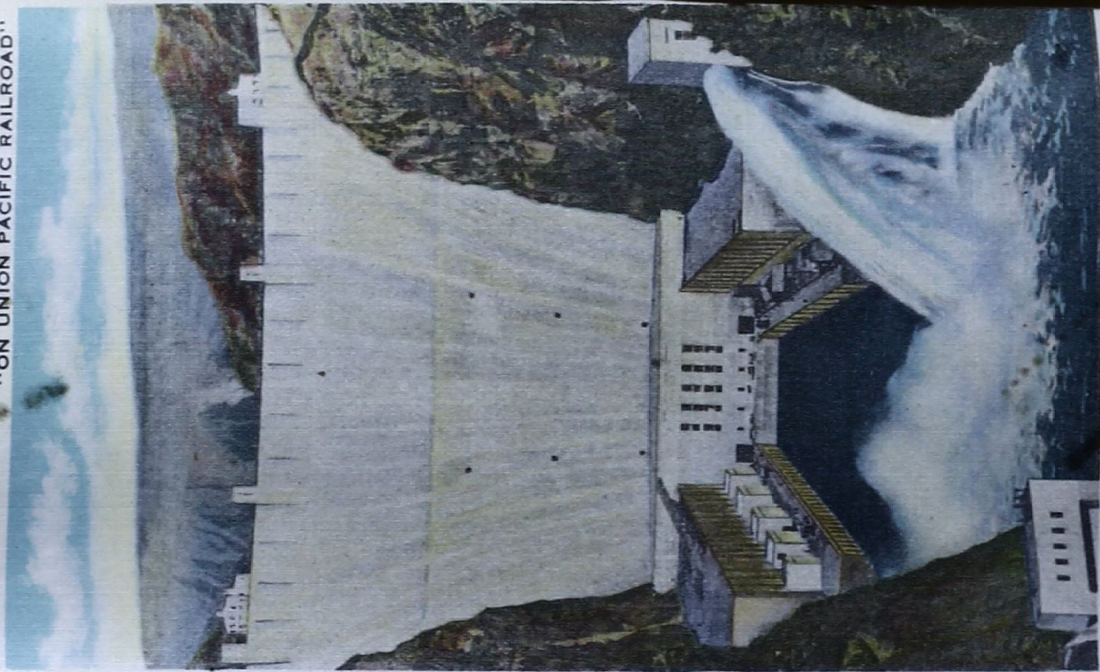
UNION PACIFIC STATION. GRAND ISLAND. NEBRASKA

"ON UNION PACIFIC RAILROAD"



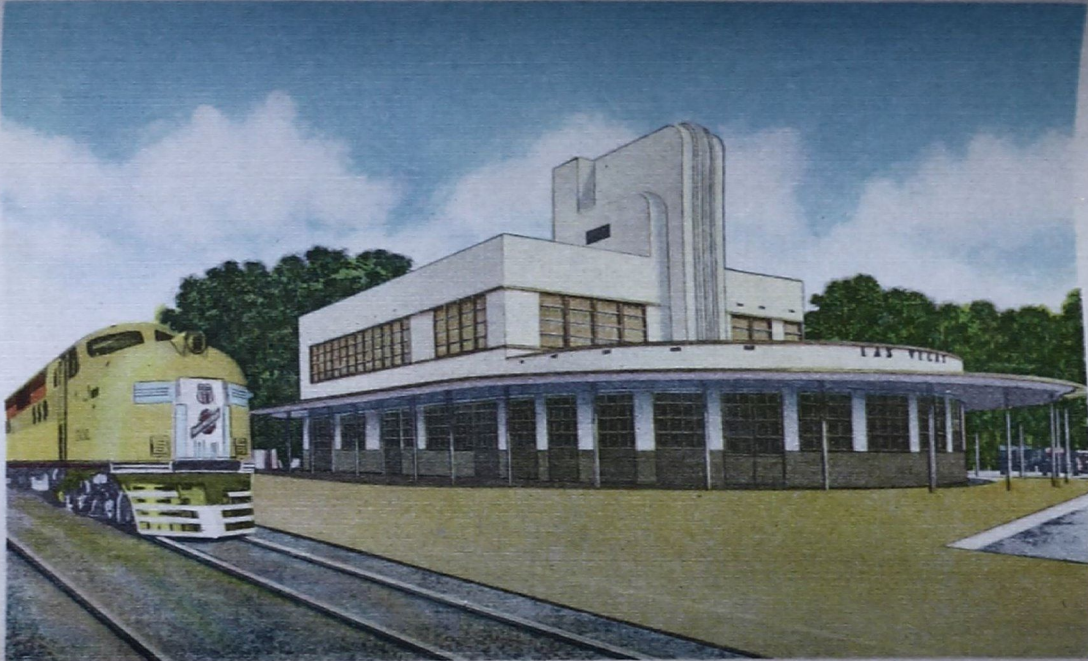
UNION STATION. OMAHA. NEBRASKA

"ON UNION PACIFIC RAILROAD"



BOULDER DAM, NEAR LAS VEGAS, NEVADA

"ON UNION PACIFIC RAILROAD"



UNION PACIFIC STATION. LAS VEGAS, NEVADA

"ON UNION PACIFIC RAILROAD"



UNION PACIFIC STATION. CALIENTE, NEVADA

"ON UNION PACIFIC RAILROAD"



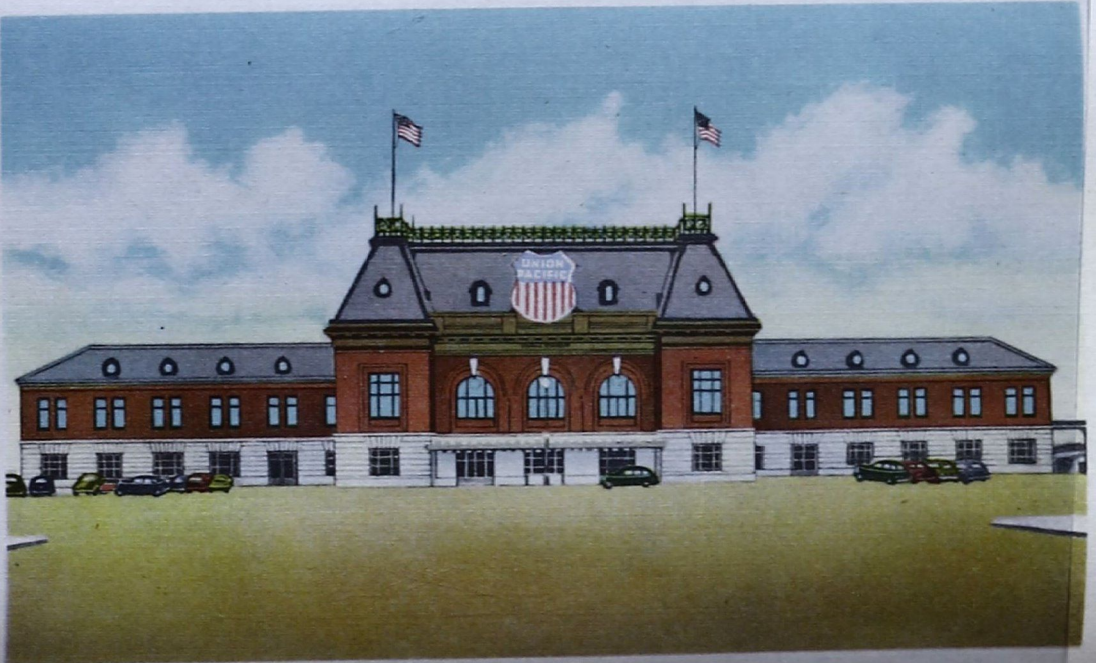
HORSEBACK PARTY. BRYCE CANYON NATIONAL PARK. UTAH

"ON UNION PACIFIC RAILROAD"



MORMON TEMPLE. SALT LAKE CITY. UTAH

"ON UNION PACIFIC RAILROAD"



UNION PACIFIC STATION. SALT LAKE CITY. UTAH

"ON UNION PACIFIC RAILROAD"



UNION STATION, OGDEN, UTAH

"ON UNION PACIFIC RAILROAD"



UNION PACIFIC STATION, GREEN RIVER, WYOMING

"ON UNION PACIFIC RAILROAD"



ELK MOUNTAIN AND THE MEDICINE BOW RIVER, NEAR LARAMIE, WYO.

The Romantic West, a Nation's Playground

Among the famous highways of all time none ranks higher in romantic and historic interest than the old Overland Trail from the Missouri River to California. It was a natural thoroughfare of easy grades followed first by buffalo and other wild animals, then by the Indians, the fur traders, explorers, Mormons, gold seekers, the Overland stage coach and the Pony Express.

While the dust of the covered wagon trains still filled the air, and before the hoofbeats of the fleet steeds of the Pony Express had died away, construction crews of the Union Pacific Railroad were at work along that famous trail, building the grades and laying the tracks of what is now so well known as the Overland Route.

This line has now reached a high degree of excellence and efficiency and is the strategic middle route across the western half of the continent from Omaha to the Golden Gate, and from Great Salt Lake across the Southwest to Southern California. All along this famous Overland Route are places of both scenic and historic interest. Near it or easily reached from it are more than half of the National Parks and other vacation playgrounds of the people of this nation.

At Omaha, the gateway to the West, is a handsome Union Station building, ranking in point of beauty and utility with the great passenger stations of the world. As the traveler passes swiftly across the state of Nebraska he sees much of interest, for it is a great agricultural region. As he nears Cheyenne, Wyoming, the Rocky mountains come into view. Cheyenne is the capital city of Wyoming and the home of "Frontier Days," a celebration held there late in July of each year to revive the spirit of the "Old West." This event features "bronco busting," steer "bulldogging," trick roping and riding, and the thrilling feats of which the cowboy is master.

Across Wyoming are many places of scenic delight and weird interest. Snowy mountains will be seen, deep gorges will be traversed, and now and then lofty buttes, castellated crags, and strangely eroded rock formations will appear. Near the entrance to Weber Canyon in northeastern Utah the train passes the base of Devil's Slide, two parallel, upturned reefs of limestone, 20 feet apart and each about 40 feet in height. Then the rugged Wasatch Range is crossed, the train winding through spectacular Weber Canyon until it reaches the Great Salt Lake Basin.

At Ogden the line to California cuts directly across the lake on 31 miles of rock-fills and heavy trestle. The trip across the lake is a most novel journey; it is literally "going to sea by rail." South of Ogden is romantic Salt Lake City, founded nearly a century ago by the Mormons. The famous Mormon Temple is an attraction that every person hopes some day to see. It is a masterpiece of Gothic architecture.

Beyond Salt Lake City the Overland Route passes through Utah, where sidetrips can be made to Zion, Bryce Canyon and Grand Canyon National Parks. On into Nevada the line passes Caliente, where hot water springs abound. Beyond that little city the traveler is carried through Rainbow Canyon, and then into Las Vegas, the last frontier city of the west. Not far from it is Boulder Dam, the largest man-made water barrier in the world. It controls the flood waters of the Colorado River and creates hydro-electric power for much of the Southwest.

Soon after leaving Las Vegas the Overland Route train reaches California, that land of fabulous beauty, adventure and romance, and for many people, the pot of gold at the Rainbow's end.

