

1908

## Whitworth College Bulletin 1908-1909

Whitworth University

Follow this and additional works at: <http://digitalcommons.whitworth.edu/whitworthcatalogs>

---

### Recommended Citation

Whitworth University, "Whitworth College Bulletin 1908-1909" Whitworth University (1908). *Whitworth Catalog*. Paper 34.  
<http://digitalcommons.whitworth.edu/whitworthcatalogs/34>

This text is brought to you for free and open access by the University Archives at Whitworth University. It has been accepted for inclusion in Whitworth Catalog by an authorized administrator of Whitworth University.

The  
Whitworth  
College

---

Bulletin

---

VOLUME 9  
NO. 1



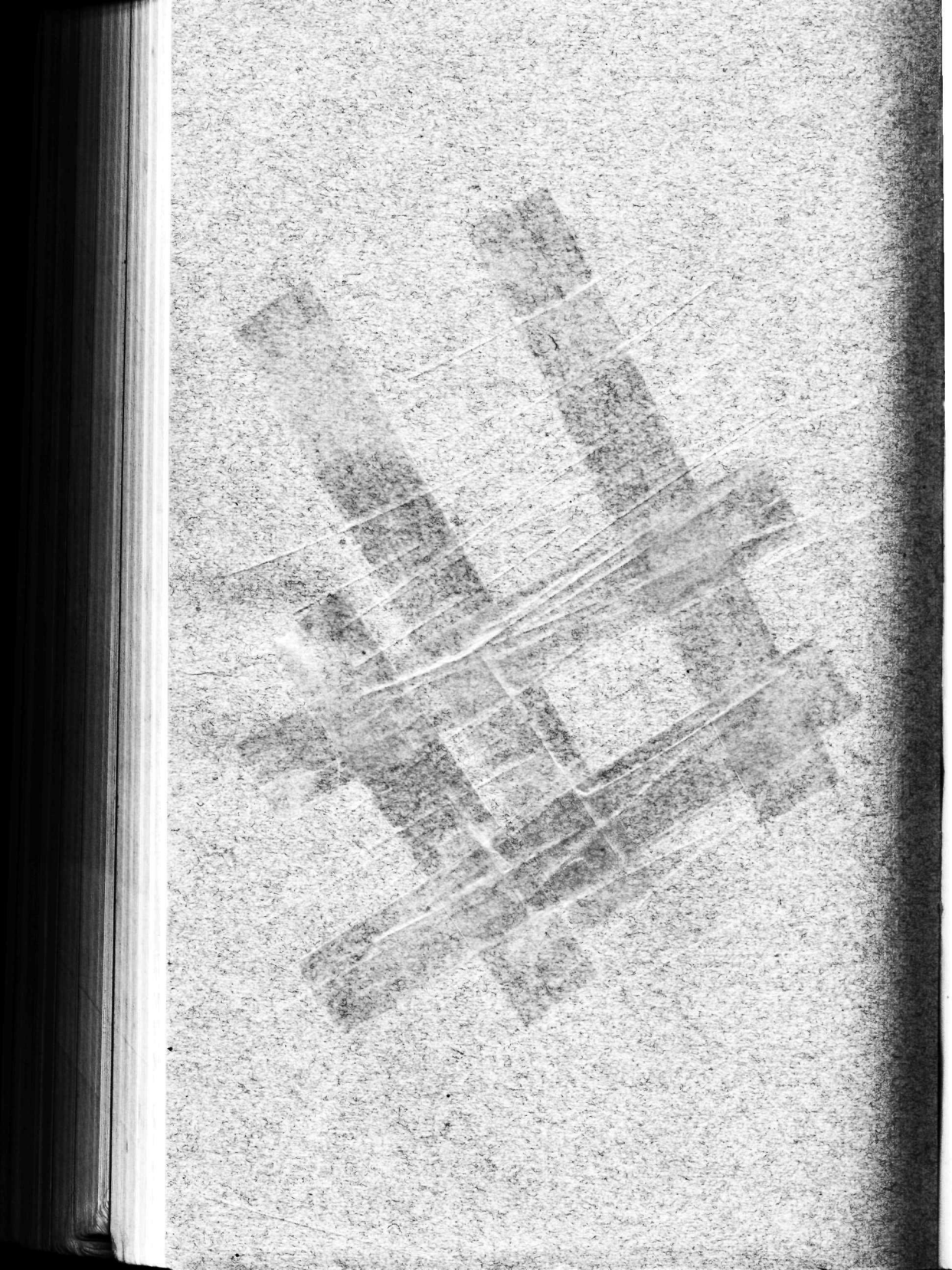
Catalogue Number  
1908-1909

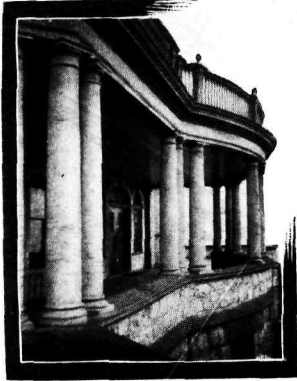
1908-1909



TACOMA, WASH.

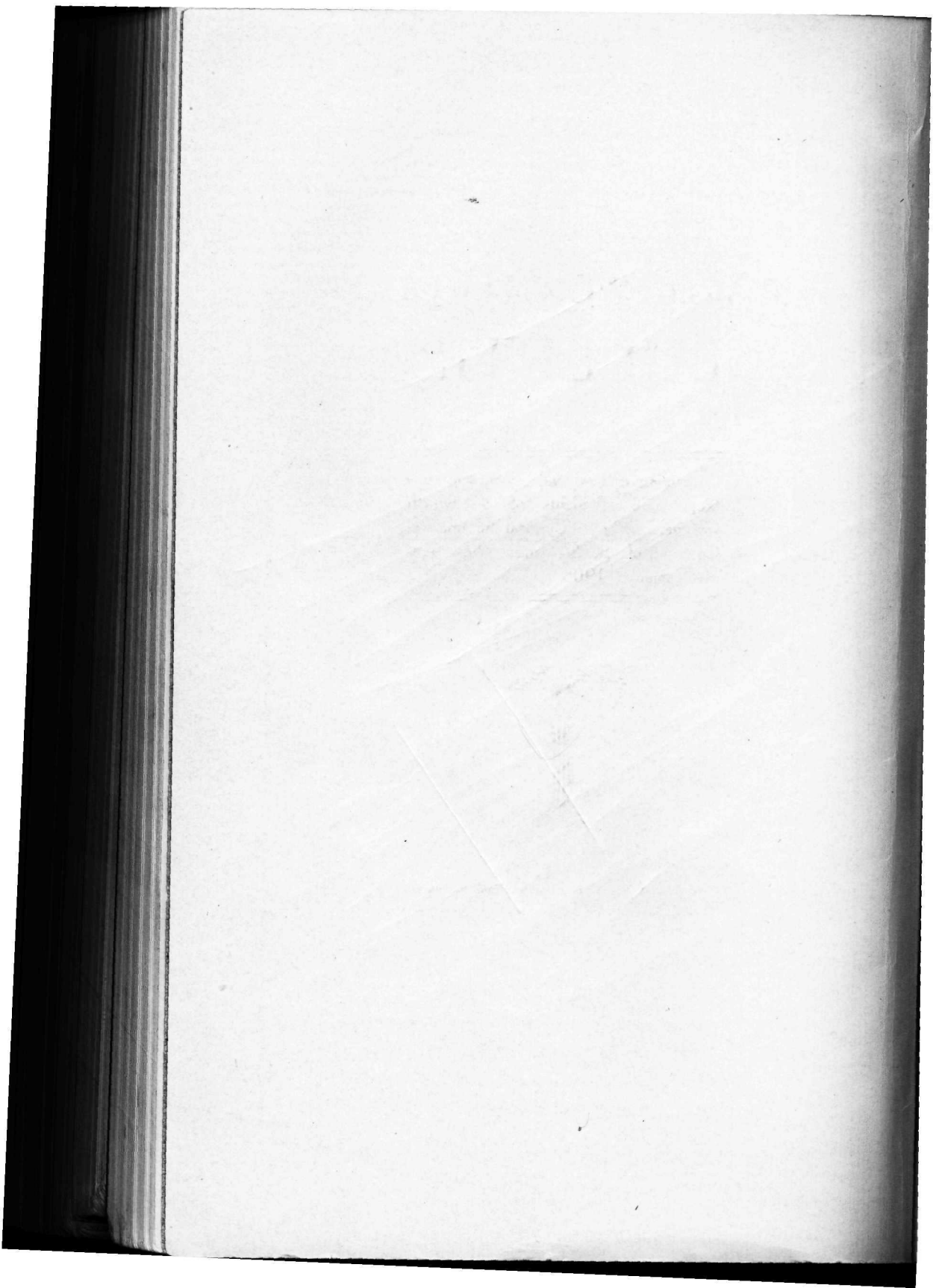






THE COLONNADE

*“The Beautiful  
is as Useful  
as the  
Useful.”*



Volume 9

Tacoma, Washington

No. 1

---

# THE WHITWORTH COLLEGE BULLETIN

---

Containing the Annual Catalogue and  
Register of Students of Whitworth  
College, 1907-8, General Information,  
Courses of Study, and other An-  
nouncements, 1908-9. :: :: :: ::

---



*"Orando et laborando pro educatione juvenum"*

---

Tacoma, Washington, April, 1908

Entered at the Post Office, Tacoma, Washington, as second class matter,  
March 7, 1900, under act of July 16, 1894

Published monthly by Whitworth College during college year  
with one mid-summer issue.

# CALENDAR

1908-1909

1908																											
JANUARY							FEBRUARY							MARCH							APRIL						
S	M	T	W	T	F	S	S	M	T	W	T	F	S	S	M	T	W	T	F	S	S	M	T	W	T	F	S
..	..	..	..	1	2	3	4	..	..	..	..	..	1	1	2	3	4	5	6	7	..	..	..	1	2	3	4
5	6	7	8	9	10	11	2	3	4	5	6	7	8	8	9	10	11	12	13	14	5	6	7	8	9	10	11
12	13	14	15	16	17	18	9	10	11	12	13	14	15	15	16	17	18	19	20	21	12	13	14	15	16	17	18
19	20	21	22	23	24	25	16	17	18	19	20	21	22	22	23	24	25	26	27	28	19	20	21	22	23	24	25
26	27	28	29	30	31	..	23	24	25	26	27	28	29	29	30	31	..	..	..	26	27	28	29	30	..	..	
..	..	..	..	..	..	..	..	..	..	..	..	..	..	..	..	..	..	..	..	..	..	..	..	..	..	..	..
MAY							JUNE							JULY							AUGUST						
S	M	T	W	T	F	S	S	M	T	W	T	F	S	S	M	T	W	T	F	S	S	M	T	W	T	F	S
..	3	4	5	6	7	1	2	..	1	2	3	4	5	6	..	..	1	2	3	4	..	..	..	..	..	1	2
8	9	10	11	12	13	14	7	8	9	10	11	12	13	5	6	7	8	9	10	11	2	3	4	5	6	7	8
15	16	17	18	19	20	21	14	15	16	17	18	19	20	12	13	14	15	16	17	18	9	10	11	12	13	14	15
22	23	24	25	26	27	28	21	22	23	24	25	26	27	19	20	21	22	23	24	25	16	17	18	19	20	21	22
29	30	31	..	..	..	..	28	29	30	..	..	..	..	26	27	28	29	30	31	..	23	24	25	26	27	28	29
..	..	..	..	..	..	..	..	..	..	..	..	..	..	..	..	..	..	..	..	..	30	31	..	..	..	..	..
SEPTEMBER							OCTOBER							NOVEMBER							DECEMBER						
S	M	T	W	T	F	S	S	M	T	W	T	F	S	S	M	T	W	T	F	S	S	M	T	W	T	F	S
..	..	1	2	3	4	5	..	..	1	2	3	1	2	3	4	5	6	7	..	1	2	3	4	5			
6	7	8	9	10	11	12	4	5	6	7	8	9	10	8	9	10	11	12	13	14	6	7	8	9	10	11	12
13	14	15	16	17	18	19	11	12	13	14	15	16	17	15	16	17	18	19	20	21	13	14	15	16	17	18	19
20	21	22	23	24	25	26	18	19	20	21	22	23	24	22	23	24	25	26	27	28	20	21	22	23	24	25	26
27	28	29	30	..	..	..	25	26	27	28	29	30	31	29	30	..	..	..	..	27	28	29	30	31	..	..	
..	..	..	..	..	..	..	..	..	..	..	..	..	..	..	..	..	..	..	..	..	..	..	..	..	..	..	..
1909																											
JANUARY							FEBRUARY							MARCH							APRIL						
S	M	T	W	T	F	S	S	M	T	W	T	F	S	S	M	T	W	T	F	S	S	M	T	W	T	F	S
..	..	..	..	1	2	..	1	2	3	4	5	6	..	1	2	3	4	5	6	..	..	..	1	2	3	4	
3	4	5	6	7	8	9	7	8	9	10	11	12	13	7	8	9	10	11	12	13	4	5	6	7	8	9	10
10	11	12	13	14	15	16	14	15	16	17	18	19	20	14	15	16	17	18	19	20	11	12	13	14	15	16	17
17	18	19	20	21	22	23	21	22	23	24	25	26	27	21	22	23	24	25	26	27	18	19	20	21	22	23	24
24	25	26	27	28	29	30	28	..	..	..	..	..	..	28	29	30	31	..	..	..	25	26	27	28	29	30	..
31	..	..	..	..	..	..	..	..	..	..	..	..	..	..	..	..	..	..	..	..	..	..	..	..	..	..	..
MAY							JUNE							JULY							AUGUST						
S	M	T	W	T	F	S	S	M	T	W	T	F	S	S	M	T	W	T	F	S	S	M	T	W	T	F	S
..	..	..	..	..	1	2	..	1	2	3	4	5	..	..	1	2	3	1	2	3	4	5	6	7			
3	4	5	6	7	8	9	6	7	8	9	10	11	12	4	5	6	7	8	9	10	8	9	10	11	12	13	14
10	11	12	13	14	15	16	13	14	15	16	17	18	19	11	12	13	14	15	16	17	15	16	17	18	19	20	21
16	17	18	19	20	21	22	20	21	22	23	24	25	26	18	19	20	21	22	23	24	22	23	24	25	26	27	28
23	24	25	26	27	28	29	27	28	29	30	..	..	..	25	26	27	28	29	30	31	29	30	31	..	..	..	..
30	31	..	..	..	..	..	30	31	..	..	..	..	..	..	..	..	..	..	..	..	..	..	..	..	..	..	..
SEPTEMBER							OCTOBER							NOVEMBER							DECEMBER						
S	M	T	W	T	F	S	S	M	T	W	T	F	S	S	M	T	W	T	F	S	S	M	T	W	T	F	S
..	..	1	2	3	4	5	..	..	1	2	3	1	2	3	4	5	6	7	..	1	2	3	4	5			
6	7	8	9	10	11	12	4	5	6	7	8	9	10	8	9	10	11	12	13	14	6	7	8	9	10	11	12
13	14	15	16	17	18	19	11	12	13	14	15	16	17	15	16	17	18	19	20	21	13	14	15	16	17	18	19
20	21	22	23	24	25	26	18	19	20	21	22	23	24	22	23	24	25	26	27	28	20	21	22	23	24	25	26
27	28	29	30	..	..	..	25	26	27	28	29	30	31	29	30	..	..	..	..	27	28	29	30	31	..	..	
..	..	..	..	..	..	..	..	..	..	..	..	..	..	..	..	..	..	..	..	..	..	..	..	..	..	..	..

# COLLEGE EVENTS

1908

Registration and Examinations.....Tuesday, September 15, 9 a. m.  
Fall Term opens.....Wednesday, September 16, 9 a. m.  
Instruction begins.....Thursday, September 17, 8:25 a. m.  
Convocation Address.....Friday, September 18, 7:30 p. m.  
Thanksgiving Day.....Thursday, November 26  
Charter Day.....Wednesday, December 9  
Winter Term opens.....Wednesday, December 9  
Christmas Recess begins.....Friday, December 18

1909

Class Work resumed.....Monday, January 4, 8:25 a. m.  
Day of Prayer for Colleges.....Thursday, January 28  
Winter Term closes.....Friday, March 19, 4 p. m.  
Spring Recess.....March 19-29  
Spring Term opens.....Monday, March 29, 8:25 a. m.  
Memorial Day.....Thursday, May 27  
Field Day.....Friday, May 28  
Baccalaureate Address.....Sunday, June 13, 3:30 p. m.  
Annual Meeting Board of Trustees.....Tuesday, June 8, 10 a. m.  
Annual Concert.....Monday, June 14, 8 p. m.  
Commencement in the Academy.....Tuesday, June 15, 8 p. m.  
Class Night.....Wednesday, June 16, 8 p. m.  
Convocation Address.....Thursday, June 17, 8 p. m.  
Commencement.....Thursday, June 17, 8 p. m.  
Annual Reception.....Thursday, June 17, 10 p. m.  
Regular Meetings of the Board of Trustees.....  
.....September 22, January 26, April 27, June 8



*Incorporated as*  
SUMNER ACADEMY  
1883

*Incorporated as*  
WHITWORTH COLLEGE  
1890

*Relocated in Tacoma*  
1899

*Reopened*  
January 2, 1900

## BOARD OF TRUSTEES

Rev. M. A. Matthews, D. D., Pastor First Presbyterian Church, Seattle.  
Frank D. Black, Merchant, Seattle Hardware Co., Coleman Block, Seattle.  
Rev. J. M. Wilson, D. D., Pastor Westminster Presbyterian Church, Seattle.  
D. S. Johnston, Pianos and Organs, Temple of Music, Tacoma.  
Rev. A. L. Hutchison, D. D., Pastor Immanuel Presbyterian Church, Tacoma.  
~~M. E. Backus, President National Bank of Commerce, Seattle.~~  
J. F. Douglas, Attorney at Law, Lumber Exchange, Seattle.  
J. Grier Long, Vice-President and Treasurer Washington Trust Co., Spokane.  
W. R. Ballard, Financial Agent, New York Block, Seattle.  
U. K. Loose, Banking and Wholesale Lumber, Seattle.  
~~Rev. Edward L. Ford, Pastor First Congregational Church, Tacoma.~~  
F. H. Murray, Attorney at Law, Equitable Block, Tacoma.  
H. H. McMillan, Insurance and Real Estate, Davenport.  
Rev. F. L. Hayden, D. D., Baker City, Oregon.  
Henry Longstreth, Financial Agent, Provident Life and Trust Co., Tacoma.  
Rev. A. F. Kirkpatrick, D. D., Pastor First United Presbyterian Church, Tacoma.  
F. H. Whitworth, Civil Engineer, New York Block, Seattle.  
Geo. H. Stone, President Stone-Fisher Co. Department Stores, Tacoma, Seattle  
and Everett.

W. B. Dudley, Shoe Store, North Yakima.

*O. N. Jones - Tacoma*  
OFFICERS FOR 1907-8.

Rev. A. L. Hutchison, D. D., President.

Rev. E. L. Ford, Vice President.

Henry Longstreth, Secretary.

Chester Thorne, President National Bank of Commerce, Tacoma, Treasurer.

### EXECUTIVE COMMITTEE.

Rev. A. L. Hutchison, D. D.

Geo. H. Stone.

F. H. Murray.

Henry Longstreth.

D. S. Johnston.

Pres't B. H. Kroeze, D. D.

### STANDING COMMITTEES.

*Finance*—Trustees Ballard, Stone and Longstreth.

*Faculty*—Trustees Stone, Ballard, Loose, Matthews and Wilson.

*Endowment*—Trustees Loose, Ballard, Black, Johnston and Douglas.

*Grounds and Buildings*—Hutchison, Kirkpatrick, Ford, Whitworth and Johnston.

*Honorary Degrees*—Trustees Matthews, Wilson and Loose.

### SYNOD COMMITTEE.

Rev. John R. Macartney. Rev. F. L. Hayden, D. D., Rev. D. A. MacKenzie.

Rev. Wallace H. Lee, LL. D. Rev. Sam'l M. Ware, D. D.

Rev. H. A. Vicker.

Victor M. Sander.

Hugh McMasters.

## FACULTY

---

BAREND H. KROEZE, A. M., D. D., President.

ETHICS AND BIBLICAL LITERATURE.

A. B., University of Michigan, 1894; Graduate Student, 1894-95; Divinity Student McCormick Theological Seminary, 1895-98; Pastorate Winona Presbytery, 1898-1902; Graduate Student University of Chicago, 1902; Vice President Lenox College, 1903-05; D. D., Coe College, 1906; President Whitworth College, 1905—

ALBERT HENRY HEATH, A. M., Dean of College.

PHILOSOPHY AND PSYCHOLOGY.

Educated and Trained Acton College, London, and Culham College, Oxford; Bishop's Prizeman, 1885; Student University Tutorial College, Cambridge; Head-Master Harlesden Collegiate-School, London, 1887-1893; Founder and Principal Lowestoft College, England, 1893-1901; Principal Northern College, 1901-05; University Coach, 1893-1905; Whitworth College, 1905—

REV. CHARLES J. SONNEMA.

GENERAL SECRETARY.

Abingdon College; Northwestern University Divinity Student; Pastorate Council Bluffs Presbytery, 1898-1903; General Secretary Lenox College, 1904-06; Whitworth College, 1906—

REV. AMOS T. FOX, B. L., B. D.

MATHEMATICS AND CIVIL ENGINEERING.

B. L., Bethany College, 1880; B. D., Yale, 1882; Principal of Whitworth Academy, 1889; President of the College, 1890; Vice President and Dean, 1890-98; Whitworth College, 1890—

MISS LIBERTA BROWN, A. M.

LATIN LANGUAGE AND LITERATURE.

A. B., Pacific University, 1899; Chehalis High School, 1900-02; Scholar in Columbia University, 1902; A. M., Columbia University, 1903; North Yakima High School, 1904; Whitworth College, 1905—

## MISS FLORENCE G. DOUGLAS, A. M.

## ENGLISH LANGUAGE AND LITERATURE.

- A. B., University of North Dakota, 1898; A. M., Wellesley College, 1901; Graduate Student University of Chicago, summer quarter, 1906; High School Waterville, Minn., 1898-99; High School Dist. 18, Seattle, 1902-06; High School LaCrosse, Wis., 1906-07; Whitworth College, 1907—

## JOHN H. WHITELY, A. B.

## CHEMISTRY AND BIOLOGICAL SCIENCES.

- A. B., Indiana University, 1899; Graduate Student Indiana University, 1900; Principal High School, Greenfield, Indiana, 1901-03; Principal High School, Paris, Illinois, 1903-04; Graduate Student Indiana University Summer Sessions, 1901-02-03 and 06; Whitworth College, 1904—

## HENRY HERBERT ARMSTRONG, A. M., Ph. D.

## GREEK LANGUAGE AND LITERATURE.

- A. B., University of Michigan, 1901; A. M., University of Michigan, 1902; Fellow, American School of Classical Studies at Rome, 1902-03; Assistant in Latin, University of Michigan, 1903-04; Ph. D., University of Michigan, 1905; Professor of Greek, Juniata College, 1905-06; Whitworth College, 1905—

## W. E. BEARDSLEY, A. B.

## MODERN LANGUAGES.

- A. B., University of Chicago, 1904; Graduate Student University of Chicago, Summer Quarter, 1904; Graduate Student University of California, Summer, 1906; Greek and Proctor, Chesbro Seminary, Chili, New York., 1899-1900; Greek and History, Stetson University, 1902-1904; Modern Languages, Fort Worth University, 1904-1906; Whitworth College, 1906—

## FLOYD T. VORIS, A. M.

## PHYSICS AND GEOLOGY.

- B. S., Highland Park College, 1892; Divinity Student McCormick Theological Seminary, 1893-96; Minister, Buffalo, Minn., 1896-98; Buena Vista College, 1898-1904; Graduate Student Columbia University, 1901-02; A. M., Columbia University, 1902; Macalester College, 1904-05; Graduate Student University of Minnesota; Whitworth College, 1906—

## WILLIAM E. ROE, A. B., D. D.

## HISTORY, ECONOMICS AND POLITICAL SCIENCE.

- A. B., Williams College, 1878; Graduate Student Johns Hopkins University, 1878-9; Instructor Brooklyn Polytechnic Institute, 1879-1883; Hill School, Pottstown, Pa., 1883-84; Graduate Union Theological Seminary, 1886; Pastor, 1886-1907; Instructor Marietta College, 1898-1900; D. D., Williams College, 1898; Whitworth College, 1907—

## MISS MARGARET MEARNS.

## ORATORY AND PHYSICAL CULTURE.

Graduate Detroit Training School of Elocution and Physical Culture, 1890; Graduate Work, 1891; Lourdes' Academy, 1892-95; Albert Lea College, 1897-1903; Lenox College, 1903-07; Whitworth College, 1907—

## W. LISTER EDWARDS, M. Acc'ts.

## PRINCIPAL COMMERCIAL DEPARTMENT.

Student, Lincoln Normal University, 1894-96; M. Acc'ts, Western Normal College and School of Business, 1897 (Iowa); Principal Commercial Department, Los Vegas Normal University, 1898-1900; Manager International Business College, El Paso, Texas, 1900-03; Albany College, 1903-07; Whitworth College, 1907—

## MISS SUSIE GARRETSON, B. S.

## ASSISTANT ACADEMIC ENGLISH AND MATHEMATICS.

B. S., Whitworth College, 1907; Whitworth College, 1907—

## MISS ALBERTA V. MUNRO.

## PIANO AND DIRECTOR OF SCHOOL OF MUSIC.

Graduate New England Conservatory of Music, Boston, 1896; Graduate Student of same, 1898-99; Graduate Student of Carl Faelton, Boston, 1898-1902; Teacher in the Carl Faelton Pianoforte School, 1898-1902; Teacher in Quincy Mansion School, Wollaston, Mass., 1902-03; Private Studio, Seattle, 1903-04; Whitworth College, 1904—

## MISS MARY KEEN WHEELER.

## ASSOCIATE IN PIANO.

New England Conservatory of Music, Boston, 1894-95; Special Normal Work, New England Conservatory, 1896; Virgil Clavier School, New York, 1898; With Emil Liebling, Chicago, 1905-06; Whitworth College, 1907—

## MISS MARGARET E. PERSING.

## ASSISTANT IN PIANO.

Graduate Whitworth School of Music, 1906; Whitworth College, 1906—

## ALBERT GRAY.

## VOICE.

Harvard, 1895; University of Paris, 1898; Pupil of Clara Poole, London; Sbriglia, Dellie, Sedie and Giraudet, and of Baritone of Grand Opera and Opera Comique, Paris; Singer of Principal Baritone Roles and Creator of "The Skald" in the Opera Fridtjof and Ingeborg; Soloist with Symphony Orchestras at Leading Music Festivals; Teacher of Voice Six Years in Paris, London and New York, as Assistant to Leading Instructors; Whitworth College, 1906—

## WALTER GUERNSEY REYNOLDS.

## HARMONY AND HISTORY OF MUSIC.

Diploma of Conservatory of Music, State Normal, Mansfield, Pa., 1891; Student of Voice and Organ in Paris with Madame Calve de Picciotto and M. Alexandre Guilmant, 1900; Private Teacher of Voice and Piano, 1894-99; Director of Doane College School of Music, Crete, Nebraska, 1901-1905; Whitworth College, 1905—

## OLOF BULL.

## VIOLIN.

Whitworth College, 1901—

## LEE R. GRIDLEY.

## MANDOLIN, GUITAR AND BANJO.

Lawrence University, 1899-1901; Private Studio, Appleton, Wis., 1896-1899; Concert Tour, 1901-07; Private Studio, Riverside, Cal., 1906; Whitworth College, 1907—

## MRS. FRANCES E. CRANDALL.

## ART.

Pupil of D. Arthur Teed, formerly of Rome, 1887-89; Student of W. H. Boss, Binghamton, N. Y., 1890-91; Pupil of J. E. Anderson, formerly of Munich, 1894; Special Work under Rhoda Holmes Nichols, N. Y., 1903-04; and Private Studio, Tacoma, 1900-03; Whitworth College, 1905—

## ARTHUR RUEBER, LL. B.

## PHYSICAL DIRECTOR AND ATHLETIC COACH.

LL. B., University of Chattanooga, 1907; Northwestern University, 1903-06; Coach, University of Chattanooga, 1906-07; Whitworth College, 1907—

## MISS ANDORA COX.

## LIBRARIAN.

A. B., Whitworth College, 1908; Whitworth College, 1907—

## REV. EMMA E. PAGE,

Lecturer on "Humane Education."

## MISS MARY BROWN,

Lecturer on "Moral Education."

## MISS MARY LIVERMORE.

## MATRON.

## RALPH AYERS.

OFFICE ASSISTANT.



# THE POLICY

---

## ADMINISTRATION.

The Board of Trustees of Whitworth College is a self-perpetuating body incorporated under the laws of the State of Washington. The trustees comprise three classes, the triennial term of a class expiring in June of each year. The trustees thus selected by the Board are confirmed by the Synod of Washington.

The Board of Trustees is immediately responsible for the property and funds of the college, and for the proper conduct of its affairs, scholastic and financial.

The original jurisdiction of the Board as to its membership and policy secures a consistent and aggressive line of action, with enough independence for effective administration, while the ecclesiastical supervision guarantees that the college reflects the moral and religious standards of the Presbyterian Church of the State of Washington. Benefactors are thus assured of responsible business methods and such synodical accountability as fully protects the institution from politics and influences not in accord with the spirit and dignity of the Church.

## ORGANIZATION.

The institution comprises the following departments:

- I.—The College, with the usual courses of four years leading to the Bachelor degrees of A. B., B. S. and Ph. B.
- II.—The Academy, which is a preparatory school to fit students for the College course. Certificates of graduation are given.

- III.—The School of Music, offering courses in Voice, Piano, Violin, Mandolin and Guitar, together with the Theory of Music and the History of Music.
- IV.—The Art School, with courses of instruction adapted to various requirements.
- V.—The School of Expression and Physical Culture, offering courses in voice building, oratory, elocution and physical culture.
- VI.—Commercial School, offering courses in typewriting, stenography, book-keeping, commercial law, commercial arithmetic, spelling, correspondence, penmanship.
- VII.—School of Engineering—Complete course in Civil Engineering.

#### THE OBJECT.

The avowed object of the College and the inspiration of all its ideals is Christian Education. While denominational in auspices, being conducted by the Presbyterian Church, it is in no sense sectarian, since the institution does not teach the tenets of that or any other religious body. It is the aim of the Faculty so to conduct the institution that a potent religious influence may always be felt, and to promote a deep religious life among the students of the College. To this end the Bible is a chief text-book. A large proportion of the students are active Christians, indicative of the religious interests of the homes represented. Christian homes are thus assured of a wholesome but liberal religious influence permeating the entire institutional life and policy.

#### SCHOLASTIC.

Whitworth College is an earnest advocate of general culture as the best possible all around preparation a young man or young woman can have for the work of life. This is an age requiring, besides mental power and acuteness of thinking, great versatility and ready adaptation to the exigencies of life. The man or woman with the broadest education, all things considered, is the most independent and socially efficient in the midst of the changes which occur in the industrial, social and

commercial worlds with such dramatic suddenness and frequency.

Specialization begins too early, long before the student has discovered his tastes and aptitudes. Such specialization doubtless renders the student expert and capable, but only within narrow limits. It fails to produce broad and vigorous scholarship. Even specialization itself is largely defeated by lack of adequate preparation and inability to grasp properly the work undertaken. "The liberally educated man, it is believed, is the best fitted for success in special work in his subsequent life."

Specialization should follow a complete course in the liberal arts. The function of the college is to supply courses in general knowledge, and to broaden the individual point of view by placing before the student the elements of the world's best knowledge.

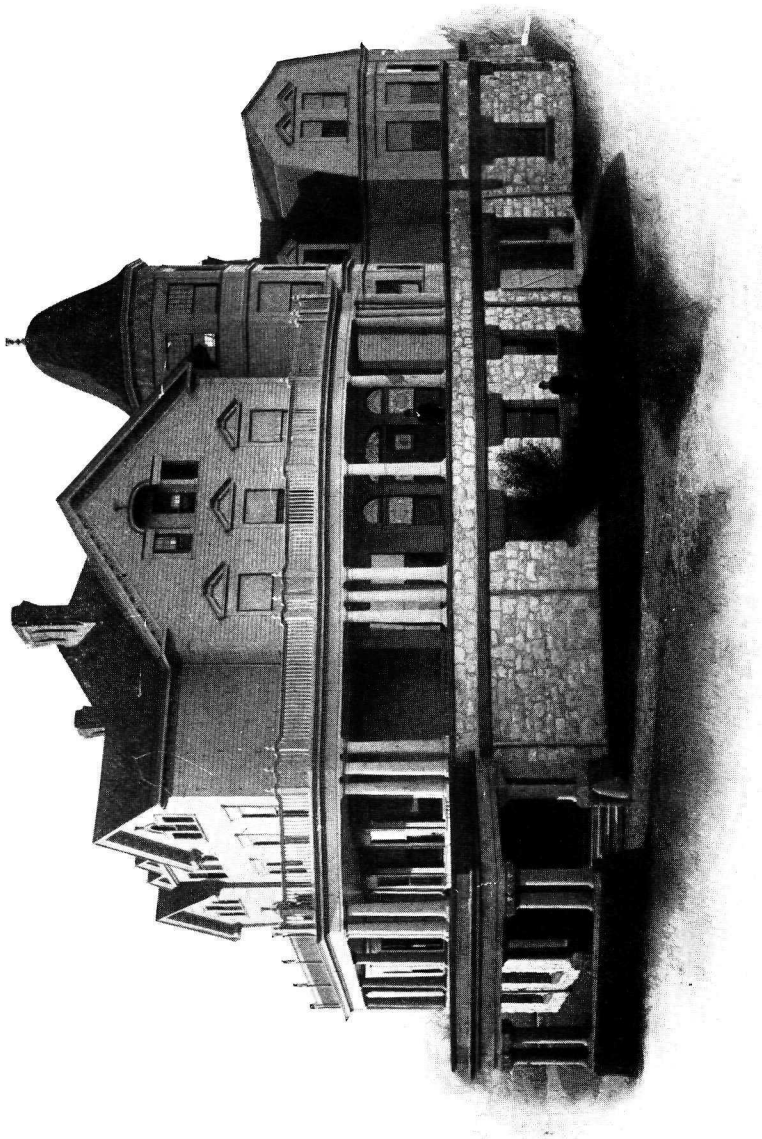
It must be kept in mind all the time that knowledge is not the highest value sought, but culture, the discipline of the powers, the vitalizing of the faculties and the developing of self activity. Broad contact, expanded point of view, the ability to look out over enlarged vistas, to make men and women broad without making them shallow; that is our ideal of culture.

But above all this as the dominant principle in education and in the preparation for active life is the supreme importance of character. Christian education means the utilization of the best years of acquisition for founding deep and broad principles of conduct. Expertness, capacity, knowledge, culture—all are valueless without character. There can be no true success, no real honor, no permanent good, without nobility of character.

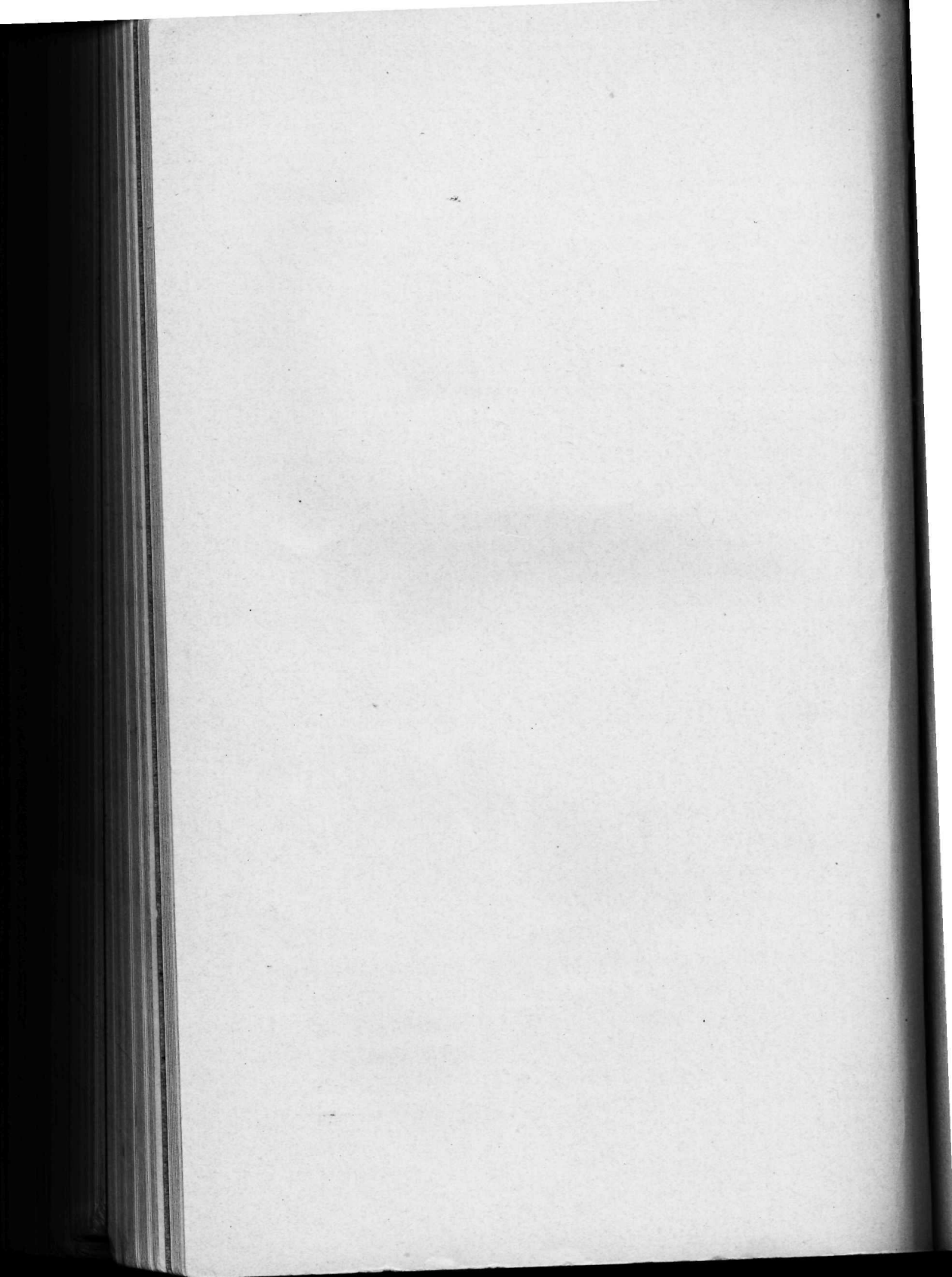
The best results in the care and culture of men and women, in collegiate days, are developed by three conditions:

First. Contact with teachers of high moral convictions, of eminent scholarship, of generous sympathy and exemplary in life and influence.

Second. The recognition of God's word as the only safe moral



LADIES' HALL



guide, both by the devout attitude of teachers in and out of the class room, and by suitable opportunities to study that word as the Book of Books.

Third. Character-building involves the exercise of needful authority and wholesome restraint. There can be no vital moral training without appeal to the sanction of God's word, and such restrictions as give steadiness to wavering purpose, admonition to the forgetful, and incentive to the well disposed.

Moral discipline presupposes moral oversight, the assertion of discreet authority, and the stimulation of wise counsel.

The Whitworth College platform, summarized, embraces general courses of instruction, seeking character building as the prime consideration, broad culture as a secondary result, and, thirdly, accurate knowledge; personal attention of teachers and intensive methods of instruction; the study of God's word, and a moral responsibility resting upon the institution for the maintenance of wholesome, helpful discipline.

More briefly, Whitworth College gives the humanities first place among studies, insists upon the supreme value of mental discipline, and seeks to promote the ideals of life.



## GENERAL INFORMATION

---

### THE COLLEGE SEAT.

Tacoma is centrally located and easily accessible by train, the various branches of the Northern Pacific reaching out into the most important sections of the State. Boat lines connect Tacoma with San Francisco, Victoria and Vancouver, B. C., with the Alaskan ports, and with Seattle and the many points upon the Sound. Ocean liners from Yokohama, Hong Kong and Honolulu afford regular and convenient service to distant ports. An interurban electric line, with an hourly service, connects Tacoma with Seattle and intermediate points. The Great Northern is reached through Seattle.

Tacoma is noted as a city of beauty and beautiful homes. Its regularly laid out streets, well kept public parks, the scenic attractions, and the culture and taste of its people, make it a desirable residential city, and an ideal location for a College.

The many well sustained churches, the Public Library, the Ferry Museum and the Y. M. C. A. are some of the indications of generous refinement and a correct public opinion.

The various art, musical and literary organizations attest the intellectual status of the inhabitants where the college has found its home. Tacoma has also an enviable distinction as an educational center, so that the college finds genial conditions securely established.

### THE SITE.

The home of the college is in a suburban addition to the City of Tacoma. It is a favorite residence section, familiarly known as the "North End." The college buildings stand upon a high bluff, or promontory known as Inspiration Point, commanding a view with a

wonderful variety of attractive features. The site overlooks the City of Tacoma and Commencement Bay, looks down Admiralty Inlet half way to Seattle, and stands opposite Quartermaster Harbor, which is flanked upon either side by Vashon and Maury Islands. Along the eastern horizon stretches the Cascade range of mountains, visible from Mt. Baker on the north to Mt. St. Helens upon the south, a distance that spans nearly the entire width of the State. Along the western horizon arises the rugged outlines of the beautiful Olympics.

It has been repeatedly stated by world-wide travelers that the view afforded from the portico of The Ladies' Hall is surpassed only by the Bay of Naples.

But scenery is not the only consideration in selecting a site for a college. The elevation and position insure pure and bracing air, free from all contamination. It is the sunniest spot upon the Sound. The buildings are supplied with an abundance of pure spring water. The drainage cannot be surpassed. The sewer system in all its appointments and the heating and ventilation are in strict accord with the latest knowledge of sanitary science.

## THE BUILDINGS.

The college occupies six commodious and well adapted buildings:

### *I. Ladies' Hall.*

The Ladies' Hall is reputed to be the most elegant structure of its kind northwest of the Mississippi river. It contains sixty commodious and well finished rooms. Large verandas extending along the front and one end of The Hall afford unusual opportunities for young ladies to promenade during rainy weather. This feature is not only enjoyable, but it is one of very great practical value. From its spacious colonnade and verandas a most beautiful, inspiring, picturesque landscape, sea and mountain scene can be had. In front stretches the opposite wooded shore line, which rises upward to the foothills of the Cascade range, flanked on the north by Mt. Baker and toward the south by Mt. St. Helens, nearly the scope of the State; while the magnificent father of

mountains, snow crowned, touched with silvery splendor by the sun, looms up, seventy miles to the east, superb, grand, in unchallenged state-  
liness. To the left the eye reaches as far as it can see down the peaceful waters of Puget Sound in the direction of Seattle, dotted here and there with huge white steamers and ocean freighters moving hither and thither like gigantic swans casting their shadows upon the waters. On either side are the broken promontories and structures of Admiralty Inlet, Quartermaster Harbor, and Vashon and Maury Islands. To the right, in the great vale, just at the spectator's feet, are the towers and pinnacles and domes of the beautiful city of Tacoma, teeming with her throbbing life, bathed in the sunlight. Back along the wide western horizon are seen the rugged shoulders of the resplendent Olympics. The interior of the building is no less of educational value. The best that architectural skill could devise is here in evidence. The reception halls and drawing rooms and grand staircase have been pronounced by visitors from the east as unsurpassed for beauty of design and detail, and as worthy of careful study. The spacious dining hall and living rooms are in keeping with the rest of the building. The structure is well lighted with electric light and is heated with steam. The home life of the resident student is always a matter of prime importance. The ethical, social and æsthetic aspects of school life are marked features in this institution, and to these vital considerations this building and its appropriate surroundings lend ready inspiraton and enduring support.

## *II. The Lodge.*

"The Lodge," or Men's Hall, is practically a three story building, arranged for comfort and convenience, with all the modern improvements and facilities. In the basement, which is high and spacious, are located the central heating plant and shower baths. The next two stories are given up exclusively for living purposes. The rooms on both floors open into large halls, the one on the first floor being designed as a reception hall.

### *III. The Mason Hall.*

The Mason Hall is one of the scholastic buildings. Large verandas extend around the whole building, making an exceptionally fine promenade for the students during either rain or sunshine. Above the roofed verandas are open verandas made accessible by four large double doors on the second floor. A spacious glass tower crowns the building from which views of the city, Sound and mountains can be had. The first floor is occupied by the Chapel, which measures 50 by 100 feet, and will seat comfortably 400 people. The second story is utilized for Library, administration and scholastic purposes. There are five recitation rooms, the President's Office and the Library.

### *IV. Olmsted Hall.*

Olmsted Hall is a residence of eleven rooms, the generous gift to the college of Mrs. W. A. Olmsted of Chicago. It is a contribution to the cause of missions, and it is the intention of the Board of Trustees to furnish and equip it as a delightful home for the children of foreign, Alaskan and home missionaries while at college for their education. It will be made the center of mission study and work in domestic science, which latter is especially important to those who will return to foreign parts to teach and to labor among the people. Until these plans are realized Olmsted Hall will be used as a Cottage Dormitory the occupants taking their meals at The Ladies' Hall, distant only one block.

### *V. Erwin Hall.*

Erwin Hall is the generous gift of the late Mr. and Mrs. S. H. Erwin, of Prescott, Wash. It is a spacious three story building, with a basement 12 feet high by 30 and 60 feet. The ground floor is neatly fitted up for two large, well-lighted Laboratories, a chemical and physical laboratory.

The east half of the second floor constitutes the musical studios and parlors, the west half the science room and biological laboratory.

The third floor is the girls' hall, and the fourth floor is occupied by the art studio and physical culture gymnasium. Erwin Hall is well lighted throughout, with special provision for photographic art in the art studio. These buildings all have excellent drainage, steam heat, electric light, and every provision for comfort and health.

#### *VI. Gymnasium.*

A spacious Gymnasium has been erected this past year. The dimensions of the building are 90 by 115 feet. The front portion of the building is two stories and a basement; the basement containing director's office and examination rooms, the first and second floors containing beautiful "Fraternity" Halls for the College Literary Societies, and Y. M. C. A. and Y. W. C. A. rooms. These rooms are made attractive, gifts from friends of the college having been received for this purpose. The Gymnasium proper is one of the finest in the Northwest, with the largest floor space and the only gymnasium with over-head running track for winter indoor track work. All the facilities for the best and sanest physical culture are being installed including a huge swimming pool, shower baths, etc. A regular director is in charge. The annual fee for Gymnasium and Athletics is \$10.00.

#### THE LIBRARY.

The foundation of the College Library proper was laid by Mr. Carlo W. Shane, now deceased, formerly of Vancouver, Washington, who made the first donation, consisting of a large number of valuable books. In 1893, Mrs. Bertha P. Thompson gave 297 volumes to the library, to be known as the "James Prentice Thompson Library." Two years later Mrs. Hannah S. Spangler, wife of Rev. Joseph M. Spangler, a member of the Presbytery of Puget Sound, gave almost the entire library of her husband (300 volumes), to be known as the "Spangler Library." Mrs. Scott, widow of the late Judge Scott, gave a number of volumes to the library. Mrs. A. W. Bash, of Seattle, recently added 200 volumes. Many of these books and pamphlets are old and rare, rendering these library additions of unusual value.

The college possesses what is widely known as the Allen C. Mason library, consisting of over six thousand well selected volumes. This is an excellent working library, consisting largely of general literature, art, history and philosophy, besides the reference books usually found in a well-selected library of that size. A great amount of time and means were expended in making this collection, and the results attest the scholarship and refined taste of the founder.

Funk, Wagnalls Company gave a very valuable collection of sociological works; also reference books, through the efforts of Rev. J. A. Laurie, Sr. There are other smaller contributions.

Among prominent features of this collection may be noted complete sets of Blackwood, the Edinburgh Review, The Century and Harper's Magazines. The library on the whole is distinctly a working library for a college, containing large works on literature, art, history, philosophy, science and reference works. It is thus eminently adapted for research work.

The Tacoma Free Public Library, which has recently moved into its new and elegant Carnegie building, contains over 25,000 volumes, both in its circulation and reference departments, and is available for student use.

## LABORATORIES.

The Science Department has three laboratories—a chemical laboratory, a physical laboratory and a biological laboratory.

The Chemical Laboratory is modernly equipped throughout with fixtures and apparatus. New tables, with hot and cold water sinks, cases, hoods and other necessary accessories have been installed. Each student has a locker, with table space of his own, and is supplied with the necessary apparatus for his course. Each student, moreover, works independently and is enabled to do advanced and research work.

The Physical Laboratory occupies one half of the large basement of Erwin Hall. Physics and geology have been separated from



chemistry and biology, and the laboratory equipped with cases and heavy tables and a large assortment of apparatus.

The Biological Laboratory occupies a large room on the first floor of the same building and is so situated that it can be thrown open and made one with the science lecture room. A good assortment of specimens and apparatus have been selected and secured and the laboratory is well fitted up with new tables and cases.

### MUSEUM.

The basis for a museum has been obtained, consisting of a number of valuable contributions, mainly the gift of Rev. John McMillan, Ph. D., now of Garber, Oklahoma, made up of curios gathered in South Africa. A valuable addition has been made in a study collection of rocks from the United States National Museum. A large number of carefully selected mineral specimens have been purchased. Prof. Voris' private collection of rocks and fossils is available for use of the classes in Geology. Marine life is abundant and each year collections are made.

The institution is particularly fortunate in having free access to the celebrated Ferry Museum, which occupies comfortable quarters in the Court House. The benefits of this large and valuable collection of coins, curios, historical relics, old books and other interesting specimens, are free to this institution, thus making the museum, with all its treasures, as available for educational purposes as though owned by the college itself.

The State Historical Society has its rooms in the City Hall, where a large collection of historical material pertaining to the State has been arranged for public study and investigation. Students have privileges.

### THE RELIGIOUS LIFE.

The object of Whitworth College is to extend the benign influence of Christian education. The administration of the college is in full accord with this lofty purpose, while magnifying the reasonableness of

the religious life as a man's truest and best life, it imparts no sectarian instruction and makes no sectarian requirements.

Each day a brief chapel service is held, which each student is required to attend.

All students are expected to attend divine service on Sabbath morning, being free to attend the church of their choice.

The Day of Prayer for colleges is now one of the College Days, and is regarded by the students as a helpful and inspiring occasion.

The Y. M. C. A. and Y. W. C. A. organizations are well established, and are doing a fine work among the students, maintaining numerous religious services of their own. Both of these organizations send representatives each year to the Pacific Coast Student Conferences at Capitola, California, and Gearhart Park, Oregon.

Vesper Services are held each Sunday afternoon at five o'clock, in The Ladies' Hall. Vespers is now one of the features of the home life, the services being adapted particularly to student needs, members of the faculty and the clergy of various denominations discussing briefly topics of vital concern to young people.

The Y. P. S. C. E. of the neighborhood, well sustained by the various shades of religious belief commonly found in any community, holds Sunday evening service in Bethany Church, two blocks from the college.

#### STUDENT ORGANIZATIONS.

The Student Body maintains an organization known as the Student Association, that has control of all associated student effort except the religious and literary societies. Among the enterprises conducted by the Student Association may be mentioned, The Whitworthian (the student paper), the various athletic associations, and the minstrel show.

A student's eligibility for athletic teams at any time depends upon his having passed a reasonable number of hours' work the previous

term, and his continuance on teams is determined by the regular standard in daily work.

The dues to the Student Association are \$2.50, payable annually at the time of registration, at the office of the Secretary of the College.

The Kappa Gamma Society is an organization of young women of college grade for literary work. The regular meetings of this Society during the past years, and the several public programmes, have been of unusual merit.

The Criterion Club is a literary society composed entirely of young men and young women of college rank.

The Thalian is a literary society of the Preparatory School.

The several classes in both College and Preparatory School are organized for mutual improvement and the promotion of class and general college spirit.

The Dramatic Club is an organization of young women that occasionally gives delightful public performances.

The J. P. S. is a social club of young women in the Preparatory School.

The minstrel show is one of the college events of unusual interest. It is always a high grade performance.

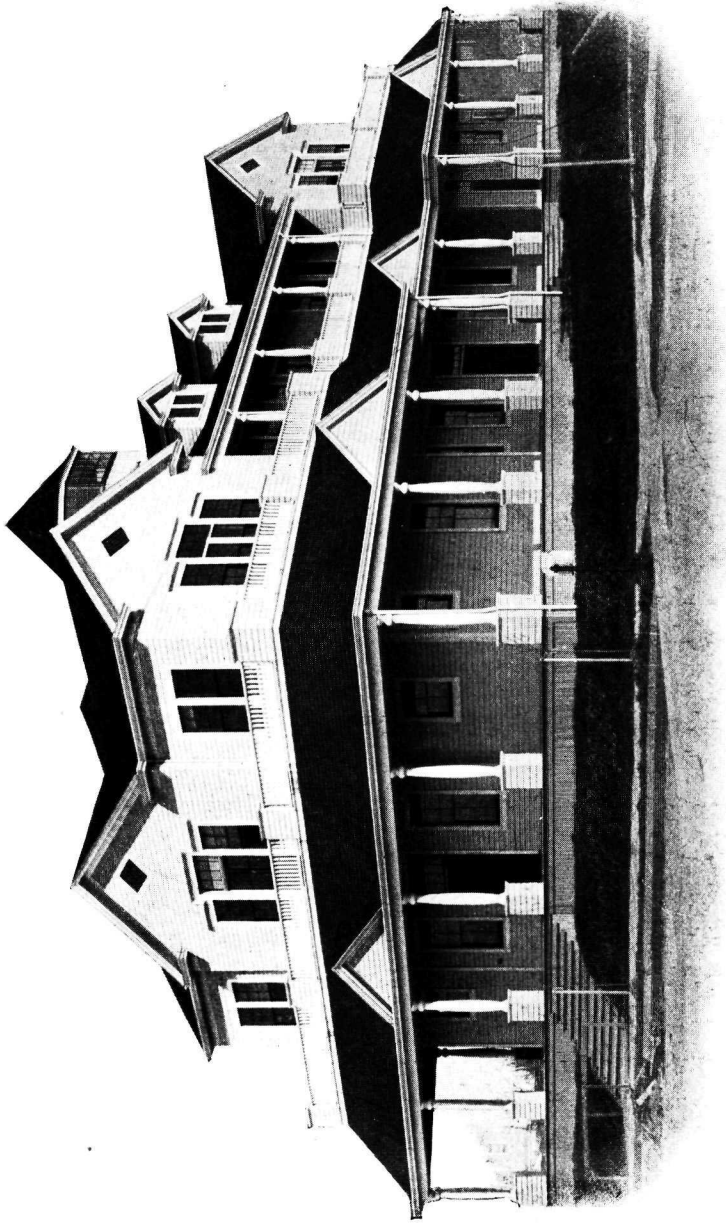
The Lawn Tennis Club is another permanent organization. A tournament is held each spring.

One of the social events of the year is the Colonial party, with costumes and forms of entertainment in keeping with "Auld Lang Syne." The college literary societies have charge of this affair.

The Preparatory School always celebrates Valentine Day by a party of its own.

#### THE CECIL RHODES SCHOLARSHIP.

Messrs. Frederic D. Metzger and Kenneth Ghormley passed the qualifying examination for the Rhodes' Scholarship this year. Both



THE MASON LIBRARY AND ADMINISTRATION BUILDING



displayed exceptional scholarship, and, as only one could represent the State, the final selection of the scholar was difficult. Mr. Frederic Metzger was elected and will enter Oxford this fall. He has the privilege of three years' residence in Oxford with a grant of \$1,500.00 a year. Mr. Ghormley need not qualify again, and may be the next scholar. Whitworth is proud of her scholarship.

### AN ACCREDITED SCHOOL.

By action of the State Board of Education, Whitworth College has been registered as an accredited school, the diploma being accepted as fulfilling all the scholastic requirements for a State Teacher's Certificate. The candidate must pass a professional examination in History of Education, Pedagogy and School Law. For these elective courses are given by the Department of Philosophy. Teachers can take special normal work, and are required to teach classes under the head of the different departments. This is an excellent feature for young teachers.

Graduation from the college with the A. B. degree has been accepted by the University of Chicago, post-graduate scholarships having been issued to graduates. Also Columbia.

The regents of the University of the State of New York have registered the A. B. degree of the college as meeting all the usual scholastic requirements of this degree.

Higher official endorsement than the above can hardly be required by an inquiring patron or student.

### DISCIPLINE.

The college has but one rule, and that is a very simple one—*to do right*. Good moral conduct, the proprieties observed everywhere in good society, studious habits, promptness and regularity in all engagements, cover, in a general way, all the requirements.

Each student, upon entering Whitworth College, agrees for himself or herself, and, if a minor, the parents guarantee, the careful observance of all requirements made for the welfare of the college and the highest interest of the student.

## BOOKS.

Students provide their own books, note books and tablets. The college operates its own book store, in Mason Hall, selling all books at list price, and stationery and all school supplies at the usual price of stationers.

## EXPENSES.

Tuition in the college is \$18.00 per term of twelve weeks, or \$54.00 per annum, payable, each term, in advance.

Tuition in the academy is \$16.00 per term of twelve weeks, or \$48.00 per annum, payable, each term, in advance.

Tuition in the commercial school is \$16.00 per term of twelve weeks, payable, each term, in advance.

Room rent, including light and heat, varies from \$6.00 to \$8.00 per month, depending upon size, location and accommodations, payable, each term, in advance.

Table board is \$3.50 per week, payable, each term, in advance.

When a room has been selected, a deposit of \$5.00 must be paid to reserve the room. This deposit will be credited to the rent account of applicant, but will be forfeited if the room is not occupied.

Personal expenses should be very light, as social demands are not in the least extravagant, probably less than at home. Economy is taught and cultivated.

All bills to the college are payable *strictly in advance*. No student will be allowed to attend any classes beyond two weeks of any term with unsettled bills.

Students are expected to dress neatly, but a large and expensive wardrobe is not only not required, but is not desired.

*Deductions.*—No deduction is made from the tuition in any department, except in case of prolonged sickness. A student entering during the first month of any term will pay the tuition fee for the entire term; a student leaving during the last month of any term will not be



entitled to any rebate. A rebate is given by a certificate which is honored upon the return of the student.

*Discounts.*—To sons and daughters of clergymen, of any denomination, a discount of 50 per centum is made in tuition in all departments and in room rent.

### REPORTS.

The grade of a student is determined by combining the daily work in class with the examination results.

The marking system adopted records results in percentage; 75 is the lowest passing percentage.

### THE DEAN OF WOMEN.

The young women, both day students and boarders, are under the immediate supervision of the Dean. She is their friend, counsellor and director.

The young men are under the same regulations that govern the life and conduct of the young women.

### HOME DEPARTMENT.

*PRONOUNCEMENT.*—*Whereas:* We, as a Board of Trustees, to whom is entrusted the oversight and direction of Whitworth College, and into whose hands is committed the character and destiny of the pupils of this institution, declare it to be our earnest desire that the students shall attain to the highest spiritual life, together with a thorough and liberal education.

*And Whereas:* The primary object of this College as a Christian institution, is to afford ample opportunity to the young men and young women to acquire a thorough education in all the higher branches of learning, together with every possible Christian influence.

*Therefore, Be It Resolved:* That we assure parents throughout the world that these ends shall be attained.

That we assure them that all harmful amusements, such as dancing and card playing, are strictly forbidden in the college, and on the part

of the pupils committed entirely to our custody.

That we assure the church at large that the institution is distinctly Christian, and that all its professors are required to exert a Christian influence over the students.

*Furthermore, Be It Resolved:* That we, as a Board of Trustees, having assured the world and the church at large of our purposes and intentions to educate, train and Christianize young men and young women, urge pastors and parents throughout the Church to become friends and patrons of Whitworth College, assuring them that the young men and young women sent forth from our college will be fitted for the truest and largest service in the Kingdom of our Lord, and will reflect the greatest credit on their Alma Mater. (Special resolution, adopted by Board of Trustees, April 26, 1904, and ordered printed in the catalogue.)

**THE SOCIAL LIFE.**—The Whitworth College home life is a distinctive feature. That every phase of social contact shall be salutary and helpful it is imperative that no one be admitted to the college family circle who is unworthy of confidence and respect. For this reason no applicant is received as a boarder who is not well recommended by persons known to the college authorities as entirely responsible. The sole condition is moral worth, not birth, position or wealth.

It makes no difference how humble the social sphere or inept in social usage, the applicant is welcome to Whitworth, and is assured in advance of congenial associations if he or she is morally worthy and anxious to improve. Upon the other hand, no amount of social pretensions will induce the authorities to accept the applicant if believed to be undesirable, or to retain a student found to be morally injurious to the college circle.

**THE SABBATH.**—The tranquil suburban location of the college, the wonderfully inspiring scenic surroundings, the privileges of the library and reading room, the companionship of teachers and the quiet of one's own room, ought to make Sunday at the college one of the best influences the institution affords. Any sort of engagement or

amusement incompatible with the peace, quiet and restfulness of the Sabbath day, certainly unfits the student for the occupations of the week, and should be scrupulously avoided.

HOME REGULATIONS.—Non-resident students must board and room with the college family, under the immediate supervision of the President and faculty.

In exceptional cases non-resident students may be permitted to board with friends or relatives in the city, or, possibly, to room and board themselves, upon written application to the President to do so, setting forth clearly the proposed plan, accompanied by the written consent of the parents or guardians, if the applicant is a minor, to the arrangement, it being agreed that the regulations governing students, as far as practicable, will be studiously and scrupulously observed.

Business engagements are made only with parents and guardians of applicant, if a minor. All arrangements are for the school year unless otherwise expressly stipulated, but in no case for less than one term of twelve weeks or the unexpired portion of the term after entering the institution.

Friday evening is a social evening, the home circle usually providing some form of entertainment in which all are expected to join.

No student in residence may spend an evening at any place of amusement, or the night away from the college, without proper excuse previously granted. Visits at home or out of town over Sunday, and all engagements that interfere with the usual hours of work, rest and regularity in living will seldom be permitted.

Each boarder furnishes his or her napkins (six), napkin ring, mattress for three-quarter bed, and bedding, including pillow, pillow cases and bedspread, hand and bath towels, laundry bag, toilet articles, and carpet or rug for the floor. Every article, if practicable, must be plainly marked in indelible ink, with the owner's name.

The rooms are large, each having a large closet. The college furnishes steam heat and electric light; also a three-quarter bed, with woven iron spring, a dressing case, study table, chair, rocker, wash-

stand and window shades. The bed makes up in the day time as a lounge or couch, with spread, pillow and cushions, giving the room the appearance of a cosy sitting room instead of a sleeping apartment.

The laundry is taken by a laundry wagon, under special arrangement with the college, whereby superior service is given students at reduced rates. No laundry work is permitted in The Ladies' Hall. A pressing and ironing room, open at definite periods, is provided for the young ladies for the pressing of dresses and other apparel. No electric irons are permitted in the rooms.

Each student makes a deposit as an indemnity for breakage not due to ordinary usage. The fee, less breakage, if any, will be returned at final settlement. Room key must be returned before final settlement.

Guests at meals are charged twenty-five cents per meal.

Students may board at the college during the Christmas vacation at the regular rate, under the usual home regulations.

The college furnishes its own Jersey milk; four Jersey cows are owned for that purpose.

**HOME BILLS.**—No deduction is made from the home bills of the term of twelve weeks remaining, on account of suspension or dismissal; in case of protracted absence, owing to illness, covering a period of four consecutive weeks or more, the loss on board will be shared equally with the parent. This concession does not include room rent, which must always be for the three months entered upon. No fraction of a boarding week, or of a month's rent, is ever considered in rendering bills.

Study hours are from 7:30 to 9:30 p. m., except Friday night. Students are free from college duties Sunday afternoon and evening (except at Vesper services).

#### TO REACH THE COLLEGE.

**BY BOAT.**—The wharves are all near the Pacific Avenue trolley line.

**BY TRAIN.**—The Pacific Avenue car line passes in front of the

Northern Pacific depot. When car fare is paid ask for a transfer check to the Point Defiance line. Fare paid upon the Interurban entitles the passenger to a transfer to the Point Defiance line. At Ninth Street and Pacific Avenue, walk two blocks up the hill to Ninth and C Streets, where the Point Defiance cars leave regularly every ten minutes. *Ride to North Forty-second Street, and walk two blocks to the college.*

BAGGAGE.—The college has a special arrangement, at favorable rates, with the T. B. & C. Transfer Co., for delivery of baggage. Students should bring their checks to the college with them to insure prompt attention and delivery. The Matron looks after the baggage for girls, and the Superintendent at the Lodge for the boys.

Immediate needs should be provided for by carrying hand baggage.

#### PUBLICATIONS.

*The Whitworth College Bulletin* is published monthly, and sent free upon application. Address the College.

*The Whitworthian* is the college paper, published by the Student Association at a nominal subscription price. It should be in the hands of every friend of the college and prospective students. Address *The Whitworthian*, care of the College.

#### INFORMATION BUREAU.

This bureau is designed to be of help to worthy young men and women who must obtain an education, either entirely or in part, through self-help. The bureau is the logical result of an increased demand for employment on the part of students, and it aims to bring the employer and employe together. No institution in the great Northwest has a better location for this class of young people.

The opportunities for earning support are many. The method is honorable and highly to be commended to young people of limited means but with an unquenchable thirst for learning. No young man or woman needs to live in this day or age without a college education. For particulars address Information Bureau, Whitworth College.

# THE COLLEGE

---

## ADMISSION.

Every application for admission must contain definite information as to the age and health of the applicant, the school last attended, and the studies pursued.

The applicant must submit satisfactory recommendations and references as to good character, industry and promptness in fulfilling all engagements; also a certificate of honorable dismissal from the school last attended.

Blank application forms may be secured of the President.

A student may enter either by diploma from an accredited High School or by examination.

Applicants entering by examination will find the requirements outlined below.

### ADMISSION TO FRESHMAN CLASS.

All candidates for admission to the Freshman Class, not provided with certificates as above, must pass an examination upon the following branches:

#### \*ENGLISH—

- (1) A thorough knowledge of Grammar;
- (2) Elementary Rhetoric and Composition;
- (3) Ability to read with intelligible expression;
- (4) In the study of the masterpieces the college adopts, substantially, the official announcement of the Joint Conference of the College and Secondary Schools—

---

\*NOTE.—No candidate will be accepted in English whose work is notably defective in point of spelling, punctuation, idiom or division into paragraphs.



## †LATIN—

- (1) Four books of Cæsar's Commentaries;
- (2) Six orations of Cicero;
- (3) Six books of Vergil's Aeneid;
- (4) Latin prose composition;
- (5) Sight reading.

## \*GREEK—

- (1) Greek Beginners' Book;
- (2) Xenophon's Anabasis (four books);
- (3) Homer's Iliad, books I-III.
- (4) Greek prose composition and syntax.
- (5) Sight reading.

## \*GERMAN—

- (1) German Grammar;
- (2) Prose translation;
- (3) Sight reading;
- (4) German prose composition.

## MATHEMATICS—

- (1) Arithmetic, including the Metric System;
- (2) Hall & Knight's School Algebra;
- (3) Plane and Solid Geometry, with original problems.

## HISTORY—

- (1) English History;
- (2) Ancient History.

## SCIENCE—

- (1) Elementary Physiology;
- (2) Physical Geography;
- (3) Elementary Physics;
- (4) Botany;
- (5) General Chemistry.

## ADMISSION TO ADVANCED STANDING.

Students from other colleges, with certificates of honorable dismissal, applying for classification higher than the Freshman year, must give satisfactory evidence of having thoroughly performed the work of this institution preceding that of the classes they wish to enter, or, else,



be examined on the studies that have been pursued by the class they desire to enter.

\*NOTE.—Greek is required of candidates for admission to the classical course; German, to the philosophical course.

†Latin is not required above one year for scientific course, but an equivalent in foreign languages may be substituted. Where Latin is taken throughout, the course is Latin-Scientific.

### COLLEGE COURSES.

The college work is divided into four groups, designated for convenience as "A," "B," "C," and "D."

Group "A," or the Languages, comprises six divisions, as follows:

- (a) Latin; (b) Greek; (c) French; (d) German; (e) Spanish; (f) English.

Group "B," or Mathematics and Science, comprises, at present, seven divisions:

- (a) Mathematics; (b) Physics; (c) Chemistry; (d) Physiology; (e) Botany; (f) Biology; (g) Electricity.

Group "C," or Philosophy, comprises, at present, six divisions:

- (a) Psychology; (b) Ethics; (c) Logic; (d) History of Philosophy; (e) Movement of Thought; (f) Psychology of Religion.

Group "D," or Political Science, comprises four divisions:

- (a) Economics; (b) Sociology; (c) Political Science; (d) Applied Economic Principles.

Under each division (see "Courses of Instruction") are as many courses, designated as I, II, III, etc., as the institution now offers in that branch of learning. From these four groups, with the inclusive divisions and courses, the college curriculum is made up.

### REQUIREMENTS FOR DEGREES.

The college presents three degrees—Bachelor of Arts, Bachelor of Philosophy, and Bachelor of Science. Essential courses are divided into major requirements and minor requirements. The courses of instruction proffered embrace those essential to the degree sought, hence required, and those non-essential, or elective.

To attain the degree of Bachelor of Arts, the candidate must make Group "A" the basis of his work, meeting major requirements in Latin, Greek and English, taking minor requirements in Group "B," besides having some elections taken from Groups "B," "C," and "D."

To attain the degree of Bachelor of Philosophy the candidate must make Group "A" the basis of his work, with major requirements in Latin, German and English, taking minor requirements in Group "B," besides having some elections taken from Groups "B," "C," and "D."

To attain the degree of Bachelor of Science, the candidate must make Group "B" the basis of his work, with major requirements in Mathematics and Science, minor requirements in Group "A" and elections from Groups "A," "C," and "D."

#### GROUPING STUDIES.

These three elements—major requirements, minor requirements, and elections—admit of various combinations, having due regard, upon the one hand, to firmness and definiteness, and upon the other, to choice and elasticity.

The college bases its offered work mainly upon the following combinations (see "Courses in Outline"), which are designated as *standard* courses, believed to be peculiarly logical and well balanced.

## COURSES IN OUTLINE.

CLASSICAL COURSE. FRESHMAN.	PHILOSOPHICAL COURSE. FRESHMAN.	SCIENTIFIC COURSE. FRESHMAN.
Hours	Hours	Hours
Greek ..... 4	German ..... 4	Mathematics ..... 4
Latin ..... 4	Latin ..... 4	Science ..... 3
Mathematics ..... 4	Mathematics ..... 4	English ..... 4
English ..... 4	English ..... 4	German ..... 4
Bible History ..... 1	Bible History ..... 1	Bible History ..... 1
Total Hours .....17	Total Hours .....17	Total Hours .....16
SOPHOMORE.	SOPHOMORE.	SOPHOMORE.
Greek ..... 4	German ..... 4	Mathematics ..... 4
Latin ..... 4	Latin ..... 4	Science ..... 3
History ..... 3	History ..... 3	History ..... 3
Science ..... 3	Science ..... 3	German ..... 4
Bible ..... 1	Bible ..... 1	Bible ..... 1
Physical Culture ..... 2	Physical Culture ..... 2	Physical Culture ..... 2
Total Hours .....17	Total Hours .....17	Total Hours .....17
JUNIOR.	JUNIOR.	JUNIOR.
Greek or Latin ..... 3	German or Latin ..... 3	Mathematics ..... 4
English ..... 2	English ..... 2	Science ..... 3
History ..... 3	History ..... 3	Philosophy ..... 4
Philosophy ..... 4	Philosophy ..... 4	Bible ..... 1
Science ..... 3	Science ..... 3	Electives ..... 4
Bible ..... 1	Bible ..... 1	Total Hours .....16
Total Hours .....16	Total Hours .....16	
SENIOR.	SENIOR.	SENIOR.
Greek or Latin ..... 3	Latin ..... 3	Mathematics ..... 4
English ..... 4	English ..... 4	English ..... 4
Political Science ..... 4	Political Science ..... 4	Biblical Literature ... 1
Electives ..... 4	Biblical Literature ... 1	Political Science ..... 4
Biblical Literature ... 1	Electives ..... 4	Electives ..... 4
Total Hours .....16	Total Hours .....16	Total Hours .....17

In the Scientific Course, Latin or French may be substituted for German.

## CIVIL ENGINEERING.

Preparatory Course the same as the Latin Scientific Course.

<p><b>FRESHMAN.</b> Fall Term.</p> <p>Hours</p> <p>College Algebra I (a) . . . . . 4            Mechanics II (a) . . . . . 2            Mechanical Drawing I            (a) (4 hours as 2) . . . . . 2            Latin or French . . . . . 4            German . . . . . 4            English . . . . . 4            Bible . . . . . 1</p> <p>Total Hours . . . . . 21</p> <hr/> <p><b>SOPHOMORE.</b></p> <p>Analytical Geometry            X (a) . . . . . 4            Surveying, Topographical and Hydrographical IV (b) . . . . . 4            Topographical Drawing III (a) . . . . . 2            Chemistry (Laboratory work) . . . . . 4            Physics . . . . . 4            Bible . . . . . 1</p> <p>Total Hours . . . . . 19</p> <hr/> <p><b>JUNIOR.</b></p> <p>Calculus—Differential IX (a) . . . . . 4            Mechanics of Materials XIII (a) . . . . . 2            Properties of Materials XIV (a) . . . . . 2            Geology (Determinative Mineralogy) . . . . . 4            Descriptive Geometry XI (a) . . . . . 2            Highway Surveying IV (d) . . . . . 2            Bible . . . . . 1</p> <p>Total Hours . . . . . 17</p> <hr/> <p><b>SENIOR.</b></p> <p>Roofs and Framed Structures XVII (a) . . . . . 4            Sanitary Engineering V (b) . . . . . 2            Theoretical Hydraulics XVIII (a) . . . . . 2            Water Works XIX (a) . . . . . 2            Political Science . . . . . 4            Applied Hydraulics (Laboratory) . . . . . 2            Railway Engineering V (a) . . . . . 3            Bible . . . . . 1</p> <p>Total Hours . . . . . 20</p>	<p><b>FRESHMAN.</b> Winter Term.</p> <p>Hours</p> <p>Trigonometry—Plane and Analytical III (a) . . . . . 4            Mechanics II (b) . . . . . 4            Mechanical Drawing I (a) (6 hours as 4) . . . . . 4            Latin or French . . . . . 4            German . . . . . 4            Bible . . . . . 1</p> <p>Total Hours . . . . . 21</p> <hr/> <p><b>SOPHOMORE.</b></p> <p>Analytical Geometry X (b) . . . . . 4            Surveying, Topographical Field Astronomy IV (c) . . . . . 4            Physics . . . . . 4            Chemistry . . . . . 4            Bible . . . . . 1</p> <p>Total Hours . . . . . 17</p> <hr/> <p><b>JUNIOR.</b></p> <p>Calculus—Integral IX (b) . . . . . 2            Principles of Construction XV (a) . . . . . 2            Railway Engineering V (a) . . . . . 4            Geology (Determinative Mineralogy) . . . . . 2            Descriptive Geometry XI (a) . . . . . 2            Geology (General) . . . . . 4            Bible . . . . . 1</p> <p>Total Hours . . . . . 17</p> <hr/> <p><b>SENIOR.</b></p> <p>Hydraulic Machinery XX (a) . . . . . 2            Engineering Design VII (a) . . . . . 2            Sanitary Engineering V (b) . . . . . 2            Mine Engineering VI (a) . . . . . 4            Bridge Design VIII (a) . . . . . 4            Political Science . . . . . 4            Bible . . . . . 1</p> <p>Total Hours . . . . . 19</p>	<p><b>FRESHMAN.</b> Spring Term.</p> <p>Hours</p> <p>Trigonometry—Plane and Analytical III (b) . . . . . 4            Surveying IV (a) . . . . . 4            Mechanical Drawing II (a) (6 hours as 4) . . . . . 4            Latin or French . . . . . 4            German . . . . . 4            Bible . . . . . 1</p> <p>Total Hours . . . . . 21</p> <p>Field Work—Summer Term of 4 Weeks.</p> <hr/> <p><b>SOPHOMORE.</b></p> <p>Calculus IX (a) . . . . . 4            Mechanics—Theoretical and Applied XII (a) . . . . . 4            Topographical Drawing III (b) . . . . . 2            Physics . . . . . 4            Chemistry (Qualitative Analysis) . . . . . 4            Bible . . . . . 1</p> <p>Total Hours . . . . . 19</p> <p>Field Work—Summer Term of 4 Weeks.</p> <hr/> <p><b>JUNIOR.</b></p> <p>Principles of Construction XV (a) . . . . . 2            Railway Engineering V (a) . . . . . 4            Graphical Statistics XVI (a) . . . . . 2            Cements and Tests (Laboratory) . . . . . 1            Geology (General) . . . . . 4            Geology (Determinative Mineralogy) . . . . . 4            Bible . . . . . 1</p> <p>Total Hours . . . . . 18</p> <p>Field Work—Summer Term of 4 Weeks.</p> <hr/> <p><b>SENIOR.</b></p> <p>Hydraulic Machinery XX (a) . . . . . 2            Bridge Design VIII (a) . . . . . 4            Mine Engineering VI (a) . . . . . 4            Political Science . . . . . 4            Engineering Design VII (a) . . . . . 2            Bible . . . . . 1            Thesis . . . . .</p> <p>Total Hours . . . . . 17</p>
---	---	---

To obtain the degree of Bachelor of Arts, the work is apportioned as follows:

Greek and Latin (A), major requirements.....	22 units.
English (A), " " .....	10 "
Mathematics (B), minor " .....	4 "
Science (B), " " .....	6 "
Philosophy (C), " " .....	4 "
Political Science (D), " " .....	4 "
Elections .....	10 "
Bible Study .....	4 "
—	
Total units .....	64

Thirty-two units must be from Group "A," ten from Group "B," four from Group "C," and four from Group "D."

To attain the degree of Bachelor of Philosophy, the work is apportioned as follows:

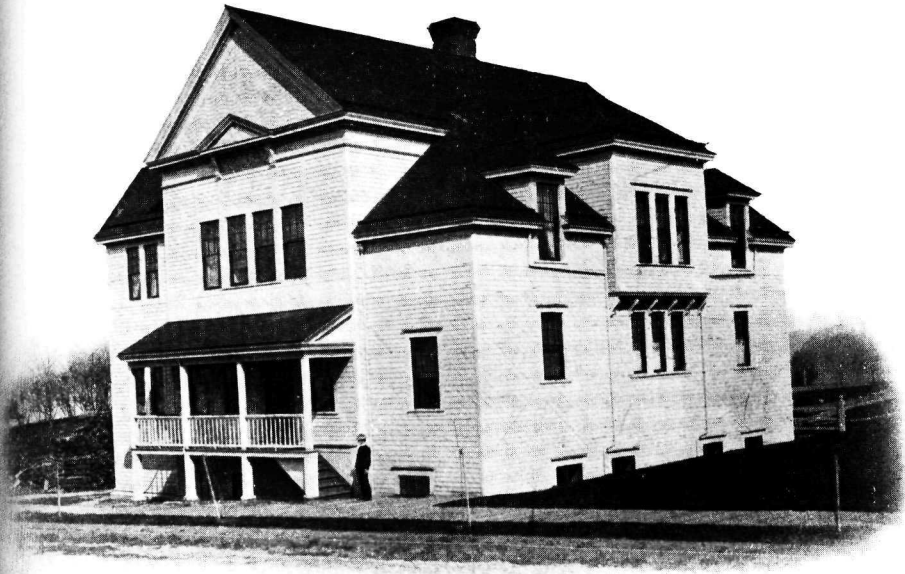
German and Latin (A), major requirements.....	22 units.
English (A), " " .....	10 "
Mathematics (B), minor " .....	4 "
Science (B), " " .....	6 "
Philosophy (C), " " .....	4 "
Political Science (D), " " .....	4 "
Elections .....	10 "
Bible Study .....	4 "
—	
Total units .....	64

Thirty-two units must be from Group "A," ten from Group "B," four from Group "C," and four from Group "D."

To attain the degree of Bachelor of Science, the work is apportioned as follows:

Mathematics (B), major requirements.....	16 units.
Science (A), " " .....	9 "
English (A), minor " .....	8 "
Modern Languages (A), " " .....	8 "
Philosophy and Political Science (C), (D), " " .....	9 "
Elections .....	10 "
Bible Study .....	4 "
—	
Total units .....	64

Twenty-five units must be from "Group "B," sixteen from Group "A," and nine from Groups "C" and "D."

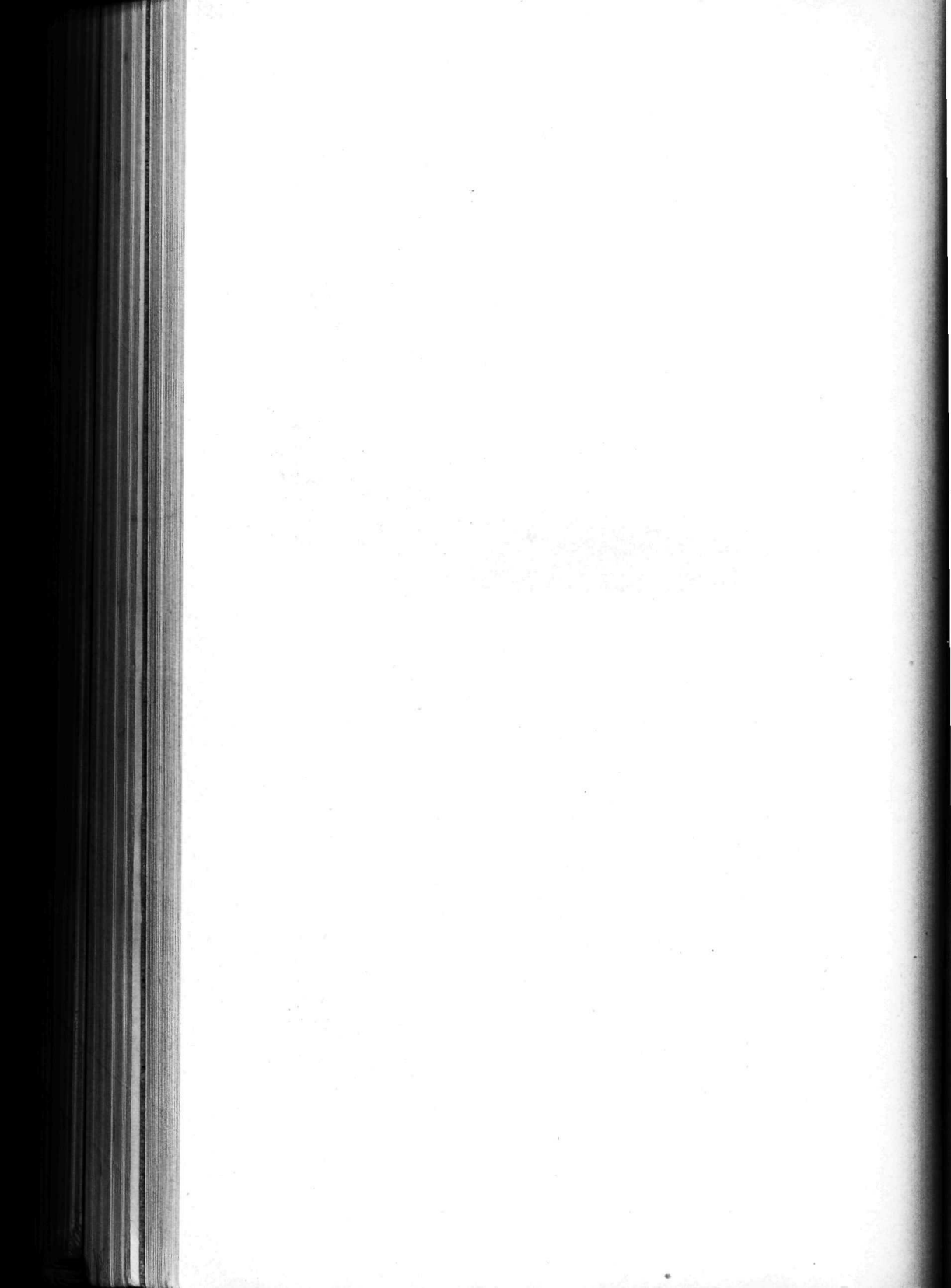


MEN'S HALL



OLMSTED HALL







Combinations adapted to manifestly peculiar aptitudes and necessities may be made, upon petition, at the discretion of the Faculty, but under no circumstances may a student select a course of instruction requiring less effort, or affording less disciplinary or culture value, than a *standard* course.

All elections, save as to a few advanced courses, must be made from the subject regularly offered in the standard courses, as outlined above, and must be approved by the Faculty.

Two hours of laboratory work, counting as one hour of recitation, constitute a unit.

#### GRADUATION.

To graduate requires, inclusive of Bible Study and Physical Culture, 66 units.

To graduate *cum laude* requires, inclusive of Bible Study, 68 units, with scholarship of uniformly high rank.

To graduate *magna cum laude* requires, inclusive of Bible Study, 70 units, with scholarship of uniformly high rank.

# COURSES OF INSTRUCTION

## PHILOSOPHY.

Courses in the Department of Philosophy are open to students after their Freshman year and in order of their arrangement.

I.—LOGIC. Deductive with a practical treatment of Inductive reasoning. The work is based upon Hyslop as a text, affording a clear exposition of and abundant practice in sound reasoning and argumentation.

Fall Term. *Four Hours Weekly.*

II.—PSYCHOLOGY. This course is designed to lead the student to acquire the habit of psychological analysis and to cultivate the power of independent and abstract thought. The course is accompanied with lectures. A portion of the work is occupied with an analysis of the complex mental processes in the light of advanced experimentation. Sheep brain and individual research work is conducted. James' Psychology is the basis with Baldwin, Ladd, McCosh, Dewey and others as reference works.

Winter Term. *Four Hours Weekly.*

III.—ETHICS. This course presents a treatment both theoretical and practical with the view to ascertain the foundation of moral obligation; the place of the will, conscience and the nature of virtue and the moral law. The student is expected to obtain a working knowledge of the leading systems of ethics and to discover the true basis of obligation and the fundamental principles of moral conduct. Gregory's *Christian Ethics* is used as a guide.

Spring Term. *Four Hours Weekly.*

IV.—HISTORY OF PHILOSOPHY. History of Ancient, Medieval and Modern Philosophy. The course covers a careful survey of Greek, Roman; patristic and modern speculative theories with text and lectures. The course is supplemented with critical readings from Plato's *Republic*; Aristotle's *Metaphysics*; Descartes' *Meditations*; Locke's *Essay on the Human Understanding*; Berkeley's *Principles of Human Knowledge*; Hume's *Treatise on Human Nature*, and Kant's *Critique of Pure Reason*.

*Three Hours Weekly Throughout the Year.*

V.—MOVEMENT OF THOUGHT IN THE 19TH CENTURY. Special course for seniors. Course IV. is a pre-requisite. Leading speculative theories of the past century are critically analyzed with a view to clear conception of recent philosophic investigation and to cultivate philosophizing.

Spring Term. *Three Hours Weekly.*

VI.—PSYCHOLOGY OF RELIGION. Course II. is a pre-requisite. This course is based upon Starbuck's *Psychology of Religion* and investigates the phenomena of religious experiences in the light of advanced experimentation.

VII.—PEDAGOGY. Rosenkranz' Philosophy of Education.

*Elective.*

VIII.—PEDAGOGY. School Management.

*Elective.*

IX.—PEDAGOGY. School Supervision.

*Elective.*

Courses VII., VIII. and IX. will be given those preparing to teach, and will be developed as required. The pre-requisite of these courses are Courses I., II. and III. Text-books, lectures and practical discussions indicate the line of instruction followed.

In this and all departments the principle of alternation of subjects will be employed when deemed practicable for the interest of the department.

#### ECONOMICS AND POLITICAL SCIENCE.

I.—POLITICAL ECONOMY. Mill's text is used. Special reading and discussions.

It is the design of this course to cover the general scope of economic study.

Fall Term. *Four Hours Weekly.*

II.—SOCIOLOGY. A complete survey of sociological history and method, also the various groupings of socii, the social life as determined by laws of settlement, and the principles involved in social improvement. Small and Vincent is the text used as a basis. Given in 1908-09.

Spring Term. *Four Hours Weekly.*

III.—POLITICAL SCIENCE. Woodrow Wilson's *The State*.

Spring Term. *Four Hours Weekly.*

IV.—ECONOMIC PRINCIPLES APPLIED. Lectures and topical discussions on the problems of Socialism, Communism, Taxation, Railroads, Public Utilities, State and Private Institutions for public good, statistical research, etc. Courses I. and II. are pre-requisite.

Spring Term. *Four Hours Weekly.*

## LATIN.

I.—Augustan poetry. Horace (Odes, Epistles, *Ars Poetica*). A study in the metrical system of Horace, and in lyric poetry. Sight-translation. Composition.

Fall Term. *Four Hours Weekly*.

II.—Augustan prose. Livy (Books XXI., XXII.). The author's literary style and his worth as an historian. Sight-translation. Composition.

Winter Term. *Four Hours Weekly*.

III.—Augustan and Ciceronian prose. Livy and Cicero. Livy (Part of Book XXII.). Cicero (*De Amicitia*, or *De Senectute*). Sight-translation. Composition.

Spring Term. *Four Hours Weekly*.

IV.—Pliny (selected letters). A study of Roman private life and customs. Theses by the student upon assigned topics.

Fall Term. *Three Hours Weekly*.

V.—Elegiac and Lyric poetry. Catullus, Propertius, Tibullus, and Ovid.

Winter Term. *Three Hours Weekly*.

VI.—Satire and Epigrams. Horace, Juvenal and Martial. History of Roman satire, with special reference to the periods of these authors. Topic papers by the students.

Spring Term. *Three Hours Weekly*.

VII.—History of Latin literature. This course is supplementary to Courses IV., V. and VI., and is given by lectures. Mackail, *Latin Literature*.

*One Hour Weekly Throughout the Year*.

VIII.—Comedy. Plautus (two plays). Study of dramatic prosody and archaic forms. Lectures upon the Roman drama. Latin composition.

Fall Term. *Three Hours Weekly*.

IX.—Comedy. Terence (two plays). Continuation of the work of Course VIII. Latin composition.

Winter Term. *Three Hours Weekly*.

X.—Tragedy. Seneca (two plays). The relation of tragedy to Roman life. The period of Seneca. Composition.

Spring Term. *Three Hours Weekly*.

XI.—The early empire. Tacitus, Agricola and Germania. A study of the causes that led to the establishment of the Roman empire, and its political institutions.

Fall Term. *Three Hours Weekly*.

XII.—Tacitus. *Annals*. A continuation of Course XI.

Winter Term. *Three Hours Weekly*.

XIII.—Roman philosophy. Lucretius (*De Rerum Natura*). The general development of Roman philosophy, and its influence on Roman religion and customs.

Spring Term. *Three Hours Weekly*.

XIV.—Teachers' Latin Course. Intended for those who expect to teach Latin. A thorough study analytically of the Latin grammar from the standpoint of principles. An investigation of the methods of instruction, of the aims of a Latin course, and the various text-books. For juniors or seniors.

*One Hour Weekly Throughout the Year.*

## GREEK.

I.—Lysias. An introduction to Greek oratory.

Fall Term. *Three Hours Weekly*.

II.—Xenophon's *Memorabilia*. A study of Greek philosophy, especially Socrates and his school.

Winter Term. *Three Hours Weekly*.

III.—Homer's *Odyssey*. Rapid reading of selections from Books I.-XII.

Spring Term. *Three Hours Weekly*.

IV.—Greek Literature. Text-book with readings. Supplementary to IV., V. and VI., and required of students taking those courses, but intended also for all students of literature, whether taking Greek or not.

*One Hour Weekly Throughout the Year.*

V.—Greek Oratory. In 1907-1908. Demosthanes on the Crown.

Fall Term. *Four Hours Weekly*.

VI.—Greek Tragedy. In 1907-1908. Oedipus Tyrannus of Sophocles.

Winter Term. *Four Hours Weekly*.

VII.—Greek Comedy. In 1907-1908. The Clouds of Aristophanes.

Spring Term. *Four Hours Weekly*.

VIII.—New Testament Greek. Various portions of the Greek New Testament are studied in successive years.

*One Hour Weekly.*

IX.—History of Greek Art. Text-book and lectures, illustrated by photographs and lantern slides. Open to all students.

*Two Hours Weekly Throughout the Year.*

Courses V., VI. and VII. will vary each year, thus offering an elective to Seniors.

## MODERN LANGUAGES.

### GERMAN.

I.—Lessing: Dramatist and Critic. Lessing's life and his influence upon literature, both as a dramatist and critic, is made the basis of discussion. This course also includes reading, translation and memorizing. Works read and discussed: *Minna von Barhelm* and *Nathan der Weise*. German prose composition.

Fall Term. *Four Hours Weekly*.

II.—Schiller: Dramatist and Poet. Reading, essays, discussions. Works studied and discussed: *Wilhelm Tell*, *Marie Stuart*, and *Das Lied von der Glocke*.

Winter Term. *Four Hours Weekly*.

III.—Goethe: His Life and Works. Lectures, short papers, discussions of Sturm and Drang period. Works read and discussed. Poems (selected): *Herman and Dorothea*, and *Egmont*.

Spring Term. *Four Hours Weekly*.

IV.—History of German Literature. General survey of German literature from early beginnings to 18th century, as associated with the political and social history of German. Papers and discussions.

Fall Term. *Three Hours Weekly*.

V.—Goethe's Faust. History of the Faust legend. Dramatic representation in 17th and 18th centuries. Critical study of Part I., Faust.

Winter Term. *Four Hours Weekly*.

VI.—Heine's Prose and Lyrics. Text-book, Heine's *Die Harzreise*.

Spring Term. *Four Hours Weekly*.

VII.—Schiller's *Wallenstein*. Discussion of the political and social background.

Fall Term. *Three Hours Weekly*.

VIII.—Kleist and Grillparzer. Study of *Prinz von Homburg* and *Sappho*. Comparison in style of the Prussian and Austrian poets in their respective dramas.

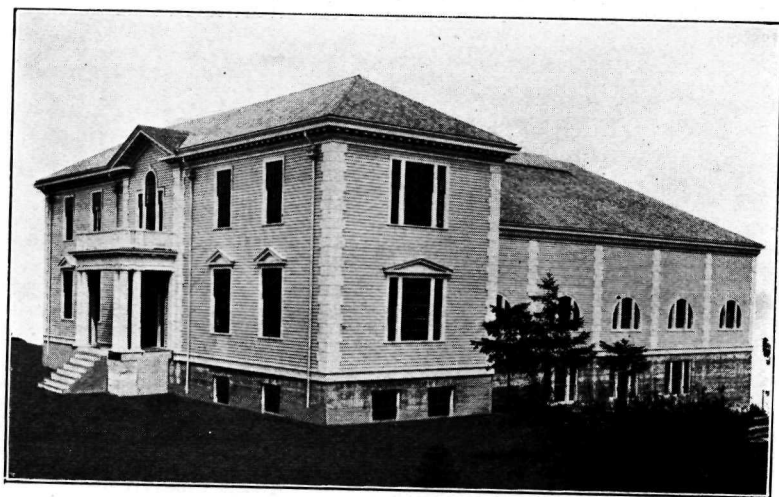
Winter Term. *Three Hours Weekly*.

IX.—Modern German Drama. This is a rapid reading course requiring a thorough knowledge of German Grammar. Texts read: Hauptmann's *Die Versunkene Glocke* and *Das Friedenfest*, Sudermann's *Heimat*, and *Frau Sorge*.

Spring Term. *Three Hours Weekly*.

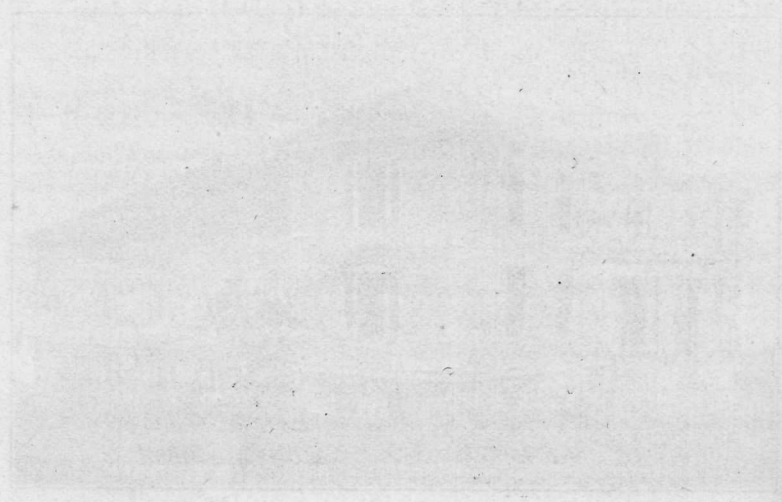


ERWIN HALL



NEW GYMNASIUM AND LITERARY HALL





NEW CHURCH AND TEMPLE HALL

GERMAN CLUB.—No student is eligible to membership who has not had at least six months' previous preparation in German. The object of the club will be to develop the practical side of the language by means of reading, conversation, singing German college songs, and giving German plays.

#### FRENCH.

I.—Elementary Course. The work in this course will comprise the rudiments of grammar, and easy exercises designed to fix in memory, forms and principles of grammar, to cultivate ease in reproducing abstracts; attention given to dictation and careful memorizing.

Fall Term. *Four Hours Weekly.*

II.—Elementary Course Continued. Books used in this course for French beginners: L'Abbe Constantin, Halevy; La Tache du petit Pierre, Mairet; Poudre aux Yeux, Labiche et Martin; Lettres de mon Moulin, Daudet. The books read vary from year to year, advantage being taken of the constant additions that are being made to text-books available for modern language study. Reading: Simple French, Francois and Giroud.

Winter Term. *Four Hours Weekly.*

III.—Elementary Course Concluded. During these three courses, the student's entire energy is concentrated upon correct pronunciation, and accurate reading knowledge of the language in connection with written exercises, dictation, translation and composition.

Spring Term. *Four Hours Weekly.*

IV.—Modern French. The oral reproduction of stories by French writers, so selected as to bring out the natural aspects of French life. Biographical sketches of leading writers, illustrated by typical selections from their works. Morceaux Choisis, Daudet; Pecheur d' Islande, Loti; Le Violon de Faience, Champfleury; La Debacle, Zola. French prose composition.

Fall Term. *Three Hours Weekly.*

V.—Life and Works by Victor Hugo. Works read and discussed: Hernani selections from Les Miserables, Les Travailleurs de la Mer, Quatre-Vingt-treize. This work is supplemented by discussions, memorizing and essays. Prose composition.

Winter Term. *Three Hours Weekly.*

VI.—French Tragedy. The French Academy, natural and institutional theatres in Paris. Rise of French drama, form and spirit compared with that of England, discussed in this course. Following books will be read:

Le Misanthrope, Moliere; Les Precieuses Ridicules, Moliere; Le Cid, Corneille; Andromaque, Racine.

Spring Term. *Three Hours Weekly.*

VII.-VIII.-IX.—Literature and Composition. Review of grammar. Prose composition. Reading of plays and novels of the 17th and 18th centuries. Dictation. Texts: Troisieme Annee de Grammaire, Larive and Fleury; Advanced French Prose Composition, Francois; French Prose of the 17th Century, Warren; Voltaire's Prose, Cohn and Woodward; Jeu de L'Amour et du Hasard, Marivaux; Le Barbier de Seville, Beaumarchais. Histoire de la Litterature Francaise, Duval.

*Three Hours Throughout the Year.*

#### SPANISH.

I.-II.-III.—Elementary Spanish Grammar. Class-room reading of modern plays and stories. Grammar, Hills and Ford; Spanish Reader, Ramsey; El Capitan Veneno, Alarcon; El Si de las Ninas, Alarcon.

IV.-V.-VI.—Literature and Composition. Grammar. Composition. Reading of principal dramatists. Spanish Literature. Spanish Composition, Ford; Marianela and Dona Perfecta, Galdos; La Vida es Sueno, Calderon; Jose, Valdes; Extracts from Don Quijote; Spanish Literature, Clark.

NOTE.—Students are expected to have a knowledge of Latin and French before taking up the courses in Spanish.

#### ENGLISH LANGUAGE AND LITERATURE.

I.-III.—Rhetoric and Composition. Text: Genung's "Working Principles of Rhetoric." Daily and weekly themes, and a study of the principles of rhetoric. In the second term, special attention is given to argumentation and practical debating. In the third term models of modern prose composition are studied. Original speeches and orations required of all Freshmen.

Throughout the Year. *Four Hours Weekly.*

IV.—History of English Literature. A general survey of its development through the different schools from the earliest times to Milton. Collateral reading in Chaucer, Spencer and Shakespeare.

Fall Term. *Three Hours Weekly.*

V.—History of English Literature. Effect of political and social changes upon the literature. The Classical School. Collateral reading.

Winter Term. *Three Hours Weekly.*

VI.—History of English Literature. Romanticism. Readings from the great romantic writers. Special theses on work of the year.

Spring Term. *Three Hours Weekly.*

VII.—Drama. Laws and technique of the drama. Lectures on the development of dramatic literature. Reading and criticism of plays of old English dramatists.

Fall Term. *Two Hours Weekly.*

VIII.—Shakespeare. A careful study of selected plays. Course VII. is a prerequisite.

Winter Term. *Two Hours Weekly.*

IX.—Shakespeare. Continuation of Course VIII.

Spring Term. *Two Hours Weekly.*

X.—The Georgian Poets. Representative works of Wordsworth, Shelley and Keats. Lectures on principles of literary criticism.

Fall Term. *Two Hours Weekly.*

XI.—The Victorian Writers. Browning, Tennyson, Ruskin and Carlyle. The effects of the critical, scientific, religious, artistic and social movements of the age upon its literature are considered.

Winter Term. *Two Hours Weekly.*

XII.—The Novel. A study of the development and function of the modern novel.

Spring Term. *Two Hours Weekly.*

XIII-XV.—Old English. The Old English language is studied with a view to giving the student a thorough grounding in the early form of our language. Reading of Old and Middle English literature. Alternates with X.-XII.

Throughout the Year. *Two Hours Weekly.*

#### HISTORY.

I.—General History. The Ancient Civilization. The Orient and Greece.

Fall Term. *Three Hours Weekly.*

II.—General History. Rome.

Winter Term. *Three Hours Weekly.*

III.—General History. The Transition. The Middle Ages.

Spring Term. *Three Hours Weekly.*

IV.-VI.—Modern Civilization. A critical study of Europe from 1450 to 1908.

Throughout the Year. *Three Hours Weekly.*

VII.-IX.—Constitutional History of the United States. Introductory outline of the English Constitution. Topical, theses and seminar work.

Throughout the Year. *Three Hours Weekly.*

X.-XII.—Modern Epoch Study. Seminar in modern France. Rise of Prussia. New German Empire.

Elective. *Two Hours Weekly.*

XIII.—History of Missions. This course is designed not only to cover the history, biography, literature and the present status of missions, but also to investigate the geographical, political, economic and social status of the missionary lands.

Fall and Winter Terms. *Two Hours Weekly.*

### MATHEMATICS AND CIVIL ENGINEERING.

I.—(a) College Algebra from Quadratics.

Fall Term. *Four Hours Weekly.*

II.—Mechanics, Magnus. (a) Uniform Motion, Variable Motion, Graphical Representation of Motion. Composition and Resolution of Motion, Falling Bodies and Special Cases. Measurement of Force, Dynamical Formulæ. Expulsion Force, Newtonian Laws.

Fall Term. *Two Hours Weekly.*

(b) Energy, Work, Friction, Varieties of Energy, Conservation of Energy. Machines, application of the law of Energy, the Wheel and Axle. The Pulley, inclined plane. Theory of Equilibrium. Centre of gravity. Methods of finding mass-centre.

Winter Term. *Four Hours Weekly.*

III.—(a) Trigonometry, Plane and Analytical (Hall and Knight).

Winter Term. *Four Hours Weekly.*

(b) Trigonometry. Lectures on the Solution of Triangles.

Spring Term. *Four Hours Weekly.*

IV.—Surveying. Text-book: Gillespie, Part I.

(a) Theory and Practice. Use of Instrument and its adjustments, also Field Practice. Books of reference: Raymond, Johnson, Carhart.

Spring Term. *Four Hours Weekly.*

(b) Surveying. Theory and Practice. Use of Instrument. Level work, topographical and hydrographical railway, city and mine surveying, also Field Practice.

Fall Term. *Four Hours Weekly.*

(c) Surveying. Topographical and hydrographical, railway, city and mine surveying, field astronomy. Text-book: Gillespie Higher Surveying. Books of reference: Raymond, Carhart, Topographical Drawing and Sketching, Reed.

Winter Term. *Four Hours Weekly.*



RECEPTION HALL





- (d) Highway Surveying. Culverts, grades, paving material, construction, specifications and practical problems. Text-book: Baker. Books of reference: Roads, Streets and Pavements, Baker; The Science of Road Making, Herschel.

Fall Term. *Two Hours Weekly.*

- V.—(a) Railway Engineering. Curves, location computations, earth work. Text-book: Railway Curves and Earth Work, Allen. Books of reference: Trautwine's Engineering Pocket Book; Field Engineering, Searles; Field Book for Engineers, Henck; Railway Curves and Location, Shunk.

Winter Term. *Four Hours Weekly.*

- (b) Sanitary Engineering. Sewers, sewage disposal, general principles of sanitation. Text-book: Cleaning and Sewerage of Cities, Baumeister. Books of reference: Sewage Disposal, Waring; Sewers and Drains, Adams; Drainage and Sewerage of Buildings, Gerhard.

Fall and Winter Terms. *Two Hours Weekly.*

- VI.—(a) Mining Engineering. Quarry Methods, Tunnels, Mines, Timbering, Ventilation, Underground Operations. Shafts. Text-book: Quarry and Mine Methods, Foster; Tunneling, Drinker. Books of reference: Practical Tunneling, Simms; Mining Manual, Ihlseng.

Winter and Spring Terms. *Four Hours Weekly.*

- VII.—(a) Engineering Design. Complete plans, specifications and estimates, drawing.

Spring Term. *Two Hours Weekly.*

- VIII.—(a) Bridge Design. Complete working drawings.

Winter and Spring Terms. *Four Hours Weekly.*

- IX.—(a) Calculus, Differential. Continuous quantity, differentiation, limits, analytical application, geometric application. Successive differentiation. Differential of algebraic functions. Maxima and minima.

Spring and Fall Terms. *Four Hours Weekly.*

- (b) Calculus, Integral.

Winter Term. *Two Hours Weekly.*

- X.—Analytical Geometry.

- (a) Loci and their Equations. The straight line, the circle, rectilinear and oblique system of co-ordinates. Polar system. Transformation of co-ordinates. Text-book: Wentworth.

Fall Term. *Four Hours Weekly.*

- (b) The Parabola. Methods of construction of the parabola. The ellipse.

Hyperbola. Polar equations of the hyperbola. Text-book: Wentworth.  
Winter Term. *Four Hours Weekly*.

XI.—Descriptive Geometry.

- (a) Problems relating to point, line and plane. Principles relating to the cylinder, cone and double curved surfaces of revolution. Intersection of planes and solids, and the development of solids.

Fall and Winter Terms. *Two Hours Weekly*.

XII.—Theoretical and Applied Mechanics.

- (a) Kinematics, statics and kinetics, especially in reference to problems of engineering, as in dams, retaining walls, friction and motive power. Text-book: Wright's Elements of Mechanics. Books of reference: Lanza, Rankine; Minchin.

Spring Term. *Four Hours Weekly*.

XIII.—Applied Mechanics.

- (a) Strength of materials, beams, girders, columns, rivets, joints, etc. Text-book: Merriman's Mechanics of Materials. Reference books: Alexander and Thompson's Applied Mechanics, Lanza's Applied Mechanics.

Fall Term. *Two Hours Weekly*.

XIV.—Properties of Material.

- (a) Wood, stone, brick, cement, concrete, iron, steel, paints, explosives, etc. Text-book: Materials of Engineering, Thurston. Books of reference: Materials of Machines, Smith; Stones of Buildings and Decorations, Merrill; Steel, Metcalf; Paints, Colors, Oils and Varnishes, Hurst; Cements, Limes and Plasters, Eckles.

Fall Term. *Two Hours Weekly*.

XV.—Principles of Construction.

- (a) Foundations, masonry, retaining walls, dams, piers, etc. Text-book: Masonry Construction, Baker. Books of reference: Design and Construction of Masonry Dams, Wegmann; Wooden Bridges, Foster; Contracts and Specifications, Johnson.

Winter Term. *Two Hours Weekly*.

XVI.—Graphical Statics. Lectures.

Spring Term. *Two Hours Weekly*.

XVII.—Roofs and Bridges.

- (a) Framed structures, trestles, cranes, drafting, plans and specifications. Recitations and drawing. Text-book: Merriman's Roofs and Bridges. Books of reference: Stresses in Bridge and Roof Trusses, Burr; Wooden Trestle Bridges, Foster; Bridge Drafting, Wright and Wing.

Fall Term. *Four Hours Weekly*.

XVIII.—(a) Hydraulics—Hydrostatics, their measurements, flow of water through pipes, orifices, canals, rivers, co-efficient of friction, calibration of nozzles. Text-book: Hydraulics, Merriman. Books of reference: Experimental Engineering, Carpenter; Practical Hydraulic Formulæ, Gould; Manual of Civil Engineering, Rankin; Friction of Water Pipes, Weston.

Fall Term. *Two Hours Weekly.*

XIX.—(a) Water Works. Source, supply and quality. Purification and storage. Construction. Text-book: Water Works Engineering, Folwell. Books of reference: Public Water Supply, Turncawn and Russell; Practical Hydraulic Formulæ, Gould; Manual Irrigation Engineering, Wilson; Water Supply, Nichols; Water Supply, Mason.

Fall Term. *Two Hours Weekly.*

XX.—(a) Hydraulic Motors and Machinery. Water wheels, rams, pumps. Text-book: Hydraulics and Hydraulic Motors, Weisbach. Books of reference: Hydraulics, Bovey; Hydraulic Motors, Turbines and Pressure Engines, Bodmer.

Winter and Spring Terms. *Two Hours Weekly.*

XXI.—(a) Descriptive Astronomy. Text-book: Young.

Candidates for the Bachelor's degree in Civil Engineering must at the conclusion of the course present theses on subjects relating to their course, and, upon approval by the Faculty, will receive the degree of C. E.

## MECHANICAL DRAWING FOR CIVIL ENGINEERING.

I.—(a) Descriptive Geometry and Mechanical Drawing. Orthographic projections lettering. Plane sections. Conic sections. Interaction of surfaces. Developments. Geometric perspective, applied to practical problems. Text-book: Church's Descriptive Geometry. Books of reference: Technic of Mechanical Drafting, Reinhardt; Mechanical Drawing, Tracy.

II.—(a) Tracing and Blue Prints. Working Drawings.

III.—Topographical Drawing. (a) Symbols, contours, profiler. (b) Color Work.

## SCIENCE.

### CHEMISTRY.

I.—Inorganic Chemistry. An introduction to the study of Chemistry. The nature and properties of the common chemical elements; the study and application of the fundamental laws and theories concerning their combination and the constitution of inorganic compounds. A beginners course. A certain

amount of laboratory work is required in connection with this course.  
 Texts: Remsen's College Chemistry; Newth's Inorganic Chemistry.

*Five Hours Throughout the Year.*

II.—Qualitative analysis. A comprehensive course in the qualitative analysis of inorganic bodies and the preparation of organic salts. Noyes Qualitative Analysis, with references.

Fall and Winter Terms. *Six Hours Weekly.*

III.—Quantitative Analysis. Gravimetric Analysis. The separation and detection of metals, acids, water of crystallization, etc.; analysis of limestone and sanitary water analysis. Newth's quantitative Analysis; Talbot, Caldwell, Mason's Water Analysis, etc.

Winter Term. *Six Hours Weekly.*

IV.—Quantitative Analysis. Volumetric Analysis. Volumetric determination of iron and copper in ores, valuation of soda ash, preparation of standard solutions, etc. Analysis of water for boiler purposes and methods for purification. Sutton Volumetric Analysis.

Spring Term. *Six Hours Weekly.*

V.—Organic Chemistry. Laboratory work in the preparation and purification of compound selected from the fatty and aromatic series for the illustration of important synthetic reactions and verification of the constants. Texts: Gattermann, Preparation of Organic Compounds.

*Six Hours Weekly. Hours to be arranged.*

## BIOLOGY.

I.—GENERAL ZOOLOGY. Comparative study of type forms. Consisting of lectures, recitations and laboratory work. The drawings made in note books are expected to be exact representations in neat, clean outlines of the dissected parts of the various types taken. Emphasis is laid on the relationship, life history, habits, adaptation, economic importance. Relation of insects to flowers. Metamorphosis of animals, classification, variation, distribution, habits and instincts. Mimicry, divisions, fertilization, developments, etc. Texts: Shipley & McBride, Elementary Zoology, Kellogg, Elementary Zoology, Marshall & Hurst.

*Seven Hours Throughout the Year.*

II.—HUMAN PHYSIOLOGY. A course in physiology extending throughout the year. For the Fall and Winter Terms, Martin's Human Body (advanced), is used as a text and Brown's Manual as a laboratory guide. The Spring Term will consist of a study of the special senses as preparatory to the

study of psychology. Text: McKendrick and Snodgrass; A Study of the Special Senses.

*Five Hours Weekly Throughout Year.*

III.—HISTOLOGY and Embryology. A course in the study of animal tissues, involving practice in staining, sectioning, mounting and the use of the microscope.

*Half Year. Six Hours Weekly.*

Stirling's Histology. The study of embryology will consist of the early stages of the chick, frog, etc.; the development of the germ layers and of organs of the body. Methods of preparation of embryos and slides. Minot Laboratory Text of Embryology.

*Second Half Year. Six Hours Weekly.*

IV.—BOTANY. A survey of the plant kingdom, beginning with the lower forms. The course includes the general principles of anatomy, morphology, physiology and ecology. Lectures, recitations, laboratory and field work.

*Three Hours Weekly Throughout the Year.*

## PHYSICS.

I.—COLLEGE PHYSICS. The course includes the study of mechanics, properties of matter, heat, wave motion, sound, light, magnetism and electricity. Recitations and lectures. Aldous Physics is used as a basis of recitations, supplemented by problems and readings on assigned topics. Emphasis is placed primarily on the understanding of physical phenomena.

*Three Hours Weekly Throughout the Year.*

II.—LABORATORY COURSE. This course is parallel to Course I., and is required in connection with it, the two courses counting five yearly credits. Experiments are selected from Ames and Bliss' Manual and other manuals of similar character. Students are required to keep complete and accurate record of all experiments. Conferences and quizzes are held in connection with the laboratory work in which the relations of the work to underlying principles are kept clearly in the mind of the student.

*Two Double Periods per Week Throughout the Year.*

III.—ELECTRICITY. A course in electric experimentation.

*Elective.*

## GEOLOGY.

I.—GENERAL GEOLOGY. Recitations, lectures and laboratory work. A general outline is given of Dynamical, Structural and Historical Geology. Sur-



face and structural features are illustrated by lantern slides and photographs. Part of the time is spent in a careful study of selected topographic and geologic maps of the U. S. Geological Survey. The student becomes familiar with the common rock-forming minerals and with typical varieties of rocks. In Historical Geology the sequence of organic development is traced in its larger outlines and a few typical fossils are studied. Le Conte's Elements is used as a text with references to Chamberlain and Salisbury and other books.

Fall and Winter Terms. *Three Hours Weekly.*

II.—MINERALOGY. An introductory course in the study of minerals, largely in the laboratory, with reports on assigned topics and quizzes.

Spring Term. *Three Hours Weekly.*

The fee in Chemistry will be \$2.50 per term, in any course, together with the usual deposit of \$2.00 to cover and breakage.

The fee in Physics and Biology will be \$5.00 for the entire year.

SPECIAL COURSES.—Students preparing for teachers' examinations will have the privilege of forming classes for review of Physical Geography and other sciences. The department is also prepared to give special attention to students intending to study medicine, and invites correspondence or conference in regard to this work.

EQUIPMENT.—The department occupies three fine laboratory rooms, well equipped, in Erwin Hall. Tables for individuals with lockers, cases, hot and cold water, sinks and other accessories are provided. A hood, communicating with a large smoke-stack affords immunity from disagreeable and noxious gases. The apparatus is carefully selected and varied.

The college also possesses sufficient microscopic material for effective work in Biology, the neighboring ponds and the waters of Puget Sound furnishing a convenient source of supply. Point Defiance and other parks, as well as the surrounding country, also afford an interesting field for Botanical work, unexcelled in any part of the country. The fauna and flora are varied and abundant.

The United States government has selected Point Defiance Park



as the big horticultural experiment station of Oriental and European bulbs and flowers. The park is located just north of the college campus.

### BIBLE.

The study of "The Book" should be a delight and a pleasure. The outlines of Bible History having been mastered in the preparatory grades, it is proposed, in the college course, to gain a general knowledge of the entire contents of Scripture. While no discussion of sectarian issues is permitted in class-room, and puzzling, critical and theological questions are silently deferred to years when judgment shall have matured, the revealed character of God and His Will concerning daily life are carefully studied. The Bible itself is used as the text-book. Students should possess the American Revised Version with References. The College Library includes valuable reference books, to which students have access. The course as outlined is as follows

I.—Hebrew History. From Genesis through the Monarchy, the Captivities and the Restoration. Text: Blakie's Bible History.

Throughout the Year. *One Hour Weekly.*

II.—New Testament History. Study of the Gospels.

Throughout the Year. *One Hour Weekly.*

III.—Prophets of Israel and Judah. A study of prophecy.

Throughout the Year. *One Hour Weekly.*

IV.—Studies in the Poetical Books. Proverbs and Ecclesiastes. The Literary Study of the Bible, by Richard G. Moulton, M. A., Ph. D., used as an aid.

Throughout the Year. *One Hour Weekly.*

V.—The Life of Christ. With studies in the Acts and the Epistles.

Throughout the Year. *One Hour Weekly.*

Pre-requisite to this course are three preceding courses.

VI.—Christian Evidences. Flint's theism is used as text. Discussions and theses. An advanced course for seniors.

Throughout the Year. *One Hour Weekly.*

## THE WHITWORTH ACADEMY

---

This is a Preparatory School and is maintained for a twofold purpose—first, to offer a logically arranged elementary course under the peculiarly advantageous conditions afforded by the college; second, to offer a logically arranged fitting course for college. The course starts with the eighth grade as the foundation.

### ADVANTAGES.

First.—Heads of departments teach the beginning classes—in Latin, Greek, French, German, English, Mathematics and Science.

Second.—Small classes, permitting the personal attention of teachers and the daily recitation of each member of the class, thus admitting of maximum individual instruction.

Third.—Personal interest of teachers in the progress of each student.

Fourth.—A compact, yet simple, course of study. Energies are not wasted carrying too many subjects—no over-work, worry or discouragement, but efficiency and thoroughness is attained.

It is understood that the studies covered by the eight grades in our public school must be thoroughly mastered before a pupil is admitted to the regular preparatory classes.

A certificate of graduation is awarded upon the satisfactory completion of the course, i. e., when the requisite number of units have been made.

### REQUIREMENTS FOR ADMISSION. GENERAL.

First.—Recommendation or references as to good moral character.

Second.—Certificate of honorable dismissal from last school attended.

Third.—Report cards, teacher's certificate, eighth grade examination diploma, or statement of proficiency in the several branches given by last teacher, will receive due consideration.

Fourth.—Satisfactory evidence of fitness, by examination or otherwise, for the work desired.

In short, (1) good character, (2) a clean school record, and (3) willingness to work.

Three courses are offered, preparatory for the classical, philosophical and scientific courses in the college.

### SYNOPSIS OF ACADEMIC COURSES.

CLASSICAL. FIRST YEAR.	PHILOSOPHICAL. FIRST YEAR.	SCIENTIFIC. FIRST YEAR.
Latin ..... 5	Latin ..... 5	Latin ..... 5
English ..... 5	English ..... 5	English ..... 5
Higher Arithmetic, Physical Geography. 5	English History ..... 3	English History ..... 3
English History ..... 3	Higher Arithmetic, Physical Geography. 5	Higher Arithmetic, Physical Geography. 5
Bible ..... 1	Bible ..... 1	Bible ..... 1
Total Hours .....19	Total Hours .....19	Total Hours .....19
<b>SECOND YEAR.</b>	<b>SECOND YEAR.</b>	<b>SECOND YEAR.</b>
Latin ..... 5	Latin ..... 5	Latin or Chemistry and Botany ..... 5
English ..... 5	English ..... 5	English ..... 5
Algebra ..... 5	Algebra ..... 5	Algebra ..... 5
Ancient History ..... 3	Ancient History ..... 2	Ancient History ..... 2
Bible ..... 1	Bible ..... 1	Bible ..... 1
Physical Culture ..... 2	Physical Culture ..... 2	Physical Culture ..... 2
Total Hours .....21	Total Hours .....20	Total Hours .....20
<b>THIRD YEAR.</b>	<b>THIRD YEAR.</b>	<b>THIRD YEAR.</b>
Latin ..... 5	Latin ..... 5	Latin or French ..... 5
Greek ..... 5	German or French ... 5	German ..... 5
Geometry and Algebra 5	Geometry and Algebra 5	Geometry and Algebra 5
English ..... 3	English ..... 3	English ..... 3
Bible ..... 1	Bible ..... 1	Bible ..... 1
Total Hours .....19	Total Hours .....19	Total Hours .....19
<b>FOURTH YEAR.</b>	<b>FOURTH YEAR.</b>	<b>FOURTH YEAR.</b>
Latin ..... 4	Latin ..... 4	Latin or French ..... 4
English ..... 3	English ..... 3	English ..... 3
Greek ..... 4	Geometry ..... 4	Geometry ..... 4
Geometry ..... 4	French or German ... 4	German ..... 4
Physics ..... 4	Physics ..... 4	Physics ..... 4
Bible ..... 1	Bible ..... 1	Bible ..... 1
Total Hours .....20	Total Hours .....20	Total Hours .....20

A *unit* is one recitation period of sixty minutes, each week, for an entire scholastic year—eighteen units means that the student recites eighteen hours each week, for a year. Minimum total units required for completion of the Academy Course is 68. Accordingly, a student must, in the four years, receive credits for 68 units.

For description of subjects consult "Course of Study Briefly Explained."

### COURSES OF STUDY BRIEFLY EXPLAINED.

GREEK AND LATIN.—The preparatory courses in Greek and Latin aim to give a thorough drill in the inflections and syntax. In order that this may be permanent, accurate and intelligent, the inflections are taught upon the synthetic principle of these two languages. This method renders the student independent in the mastery and application of these elements; it trains the reasoning faculties, as well as the memory, and prevents the student from blindly following any set paradigms.

The preparatory work in Greek and Latin is along the lines that analyze the principles of grammar, which are involved in the various cases and moods; this is the method particularly of the second and third years. Upon this critical analysis is based the study and application of the various rules, so that the student learns them not only accurately, but also intelligently, knowing the reason as well as the fact.

LATIN I.—Beginner's course, constructions, declensions and conjugations, based on *Fabulæ Faciles* and *Cæsar's Bellum Gallicum*.

First Year. *Five Hours Weekly.*

- II.—(1) *Cæsar* (Books I. and IV.);  
 (2) Latin Writing;  
 (3) Sight-reading.

Second Year. *Five Hours Weekly.*

- III.—(1) Cicero. Six orations;  
 (2) Sight-reading, based on Sallust;  
 (3) Latin Writing.

Third Year. *Five Hours Weekly.*

- IV.—(1) Vergil. Six books of the Aeneid;  
 (2) Latin Writing;  
 (3) Sight-reading, based on Ovid.

Fourth Year. *Four Hours Weekly.*

GREEK—I.—If the student is to take the Classical Course:

- (1) Beginner's book;  
 (2) Xenophon's Anabasis (Book I.);  
 (3) Greek composition.

Third Year. *Five Hours Weekly.*

- II.—(1) Xenophon's Anabasis (Books II.-IV.);  
 (2) Homer's Iliad (Books I.-III.);  
 (3) Greek Syntax.

Fourth Year. *Four Hours Weekly.*

ENGLISH.—Eighth grade graduates are supposed to have a fair knowledge of English grammar and composition, and to possess, in some degree, an appreciation of good literature. The instruction in the Academy aims to secure a thorough study of the English language, to train the student in the accurate use of our tongue, and to acquaint him with the treasures to be found in our own rich and masterful literature.

ENGLISH—I.—Study of five English masterpieces. Composition in connection with reading. Drill in the avoidance of common errors in English Grammar.

First Year. *Five Hours Weekly.*

- II.—Word Study. Derivation and composition of words. Rhetoric. Reading of two books from the list of those required for entrance to college.

Second Year. *Five Hours Weekly.*

- III.—Composition and Rhetoric. Mythology. Selected masterpieces.

Third Year. *Three Hours Weekly.*

- IV.—Masterpieces: College Preparatory Reading for 1908-1909, completed. Special study of the essay and oration. Outline work and rhetorical.

Fourth Year. *Three Hours Weekly.*

GERMAN.—The preparatory course in German keeps practical ends in view. The aim is to give the student a knowledge of ele-

mentary German grammar, ability to understand spoken German, and to converse upon simple subjects, facility in translating easy German, practice in writing and giving paraphrases and reproductions from memory. Importance is attached to correct and expressive reading aloud, and to writing of German script. In Course I. the books used are *Lehrbuch der Deutschen Sprache*, Spanhoofd; *Aus Meinem Koenigreich*, Carman Sylva; *Der Zebrochene Krug*, Zichokke; *Novelletten* (selected).

GERMAN—I.—If the student is to take the Scientific or Philosophical Course:

- (1) Grammar;
- (2) Translation;
- (3) Composition;
- (4) Conversation.

*Five Hours Weekly.*

II.—If the student elects German in Scientific Course:

- (1) Lessing: Dramatic and Critic. Lessing's life and his influence upon literature, both as a dramatist and critic, made the basis of discussion. This course also includes reading, translation and memorizing. Works read and discussed: *Minna von Barhelm* and *Nathan der Weise*.

*Fall Term. Four Hours Weekly.*

- (2) Schiller: Dramatist and Poet. Reading, essays, discussions. Works studied and discussed: *Wilhelm Tell*, *Marie Stuart*, and *Das Lied von der Glocke*.

*Winter Term. Four Hours Weekly.*

- (3) Goethe: His Life and Works. Lectures, short papers, discussions of Sturm and Drang period. Works read and discussed. Poems (selected): *Herman and Dorothea*, and *Egmont*.

*Spring Term. Four Hours Weekly.*

FRENCH.—The courses in French, like the courses in German, keep practical ends in view and are conducted upon the same methods.

FRENCH—I.—If the student elects French in Scientific Course:

- (1) Elementary Course. The work in this course will comprise the rudiments of grammar, and easy exercises designed to fix in memory, forms and principles of grammar, to cultivate ease in reproducing abstracts; attention given to dictation and careful memorizing.

*Fall Term. Four Hours Weekly.*

- (2) Elementary Course Continued. Books used in this course for French beginners: L'Abbe Constantin, Halevy; La Hache du petit Pierre, Mairet; Poudre aux Yeux, Labiche et Martin; Lettres de mon Moulin, Daudet. The books read, vary from year to year, advantage being taken of the constant additions that are being made to text-books available for modern language study.

Winter Term. *Four Hours Weekly.*

- (3) Elementary Course Continued. During these three courses, the student's entire energy is concentrated upon correct pronunciation, and accurate reading knowledge of the language in connection with written exercises, dictation, translation and composition.

Spring Term. *Four Hours Weekly.*

- 11.—(1) Modern French. The oral reproduction of stories by French writers, so selected as to bring out the natural aspects of French life. Biographical sketches of leading writers, illustrated by typical selections from their works. Morceaux Choisis, Daudet; Percheur d'Islande, Loti; Le Violon de Faience, Champfleury; La Debacle, Zola.

Fall Term. *Four Hours Weekly.*

- (2) Life and work of Victor Hugo. Works read and discussed: Hernani selections from Les Miserables, Les Travailleurs de la Mer Quatre-Vingt-treize. This work supplemented by discussion, memorizing and essays.

Winter Term. *Four Hours Weekly.*

- (3) French Tragedy. The French Academy, national and institutional theatres in Paris. Rise of French drama, form and spirit compared with that of England, discussed in this course. Following books will be read: Le Misanthrope, Moliere; Les Precieuses Ridicules, Moliere; Le Cid, Corneille; Andromaque, Racine.

Spring Term. *Four Hours Weekly.*

MATHEMATICS—Higher Arithmetic is taken up for one semester of the First Year.

*Five Hours Weekly.*

Algebra is carried through the second year and completed in the first semester of the third year. Special attention is given to factoring.

*Five Hours Weekly.*

Plane and Solid Geometry is the course for the second semester of the third year, and the fourth year.

*Five Hours Weekly.*



**HISTORY.**—History is so arranged that students will be enabled to obtain sufficient historical knowledge to pursue their classical studies with an intelligent appreciation of what is implied.

In the first year English History is required. The usual college method is employed, and the published works, letters, and memoirs of the leading men are examined. Ancient History is the course for the second year, and is chiefly introductory to historical study.

**PHYSICAL GEOGRAPHY.**—An introductory study to science as such.

First Semester. *Five Hours Weekly.*

**GENERAL PHYSICS.**—Fall term: Mechanics. Winter term: Heat, Sound and Light. Spring term: Magnetism and Electricity. Most of the laws and phenomena verified by experiment. Millikan and Galis Text and Laboratory Manual are used.

Fourth Year. *Four Hours Weekly.*

**CHEMISTRY.**—A general introductory study with laboratory experiments.

First Semester, Second Year. *Five Hours Weekly.*

**BOTANY.**—A study of plants as living organisms.

Second Semester, Second Year. *Five Hours Weekly.*

**BIBLE.**—The exclusion of the Bible from the public schools and the brevity and desultory methods of ordinary Sabbath school teaching, send to college preparatory grades many pupils very ignorant of Holy Scripture. Not only so, but to some of them, the Bible seems a dry and obsolete book. Manifestly the teacher's first effort must be to awaken interest and fix attention.

The Preparatory Course is therefore arranged to include consecutive study of BibleHistory, so far as possible in the light of present archæological research, character studies, and geography and topography of Bible lands. The Bible itself is the text-book. The ground to be covered in a given term is not predetermined, as it must vary with the capacity of different classes. Intelligent mastery of assigned topics is required. One hour a week is allowed to recitation, and at least two written examinations are given each year.

Students will be expected to provide themselves with a copy of the American Revised Version with References.

## SCHOOL OF ORATORY.

---

It is the purpose of this school to give a symmetrical development of body, mind and soul; to produce public readers and speakers, who shall be easy, natural and forceful; to train teachers of expression who shall be worthy exponents of the art.

This school is also designed to afford a system of physical, mental and aesthetic culture for those who realize the value of expression, but who do not desire to enter the profession.

The course extends over three years and furnishes careful instruction in the work outlined as follows:

**COURSE I. First Year.** Physical Education. Anderson's Free Hand Gymnastics, Bells, Wands, Balls and Clubs; Emerson Exercises; Swedish Exercises; Aesthetic Physical Culture. Rhythmic movements and Fancy Steps and Marches. Voice Culture. In connection with vocal training are considered the careful development of all the muscles and organs used in the production of voice, breathing, change of pitch, pure tone, flexibility of inflection, cultivation of the imagination, clear enunciation and comparative relation in emphasis, memory training. Phrasing and light reading. Literary analysis and interpretation of selected poems. Scotch dialect. Philosophy of Expression, Brown.

**COURSE II. Vocal and Aesthetic Physical Culture Combined.** Bodily expression, gesture and pantomime. Study of expression in pictures and statuary. The short story, monologue; abridgement and adaptation of selections; studies from Browning and Tennyson. Shakespeare, his life and art; dramatic interpretation; analysis and presentation of plays. Scotch dialect. Sear's History of Oratory. Bible reading. Artistic arrangement of programs. Public Recitals. Public recitals by the pupils are given frequently throughout the year.

**COURSE III. Study and Delivery of Great Orations.** Sear's History of Oratory (continued). Practice teaching, arranging class lessons. Dramatic interpretation of Shakespeare's Hamlet and Macbeth, Schiller's Maid of Or-

leans, Stephen Phillips' Poems and Dramas. Readings from Hauptmann and Maeterlinck. Bible reading. Modern Comedies: Charles Reade's Nance Oldfield and Christie Johnston.

Students who have completed the prescribed work satisfactorily and whose attendance, application and accomplishment during the three years are satisfactory to the Faculty, will receive a Diploma of Graduation.

Classes for children will be held Saturday mornings. The Director has had wide experience in teaching children's classes, and this feature of the school is destined to become popular. Recitals will be given by the children at the close of each term. Lispering, nasal tone, also other peculiarities or impediments of speech can be cured. \$10.00 a term, one hour a week.

**TERMS:** Two lessons per week, for one term of twelve weeks, private, \$24.00.

The same in regular class, \$12.00.

Physical Education, two lessons a week for one term of twelve weeks, \$18.00.

All lessons are thirty minutes.

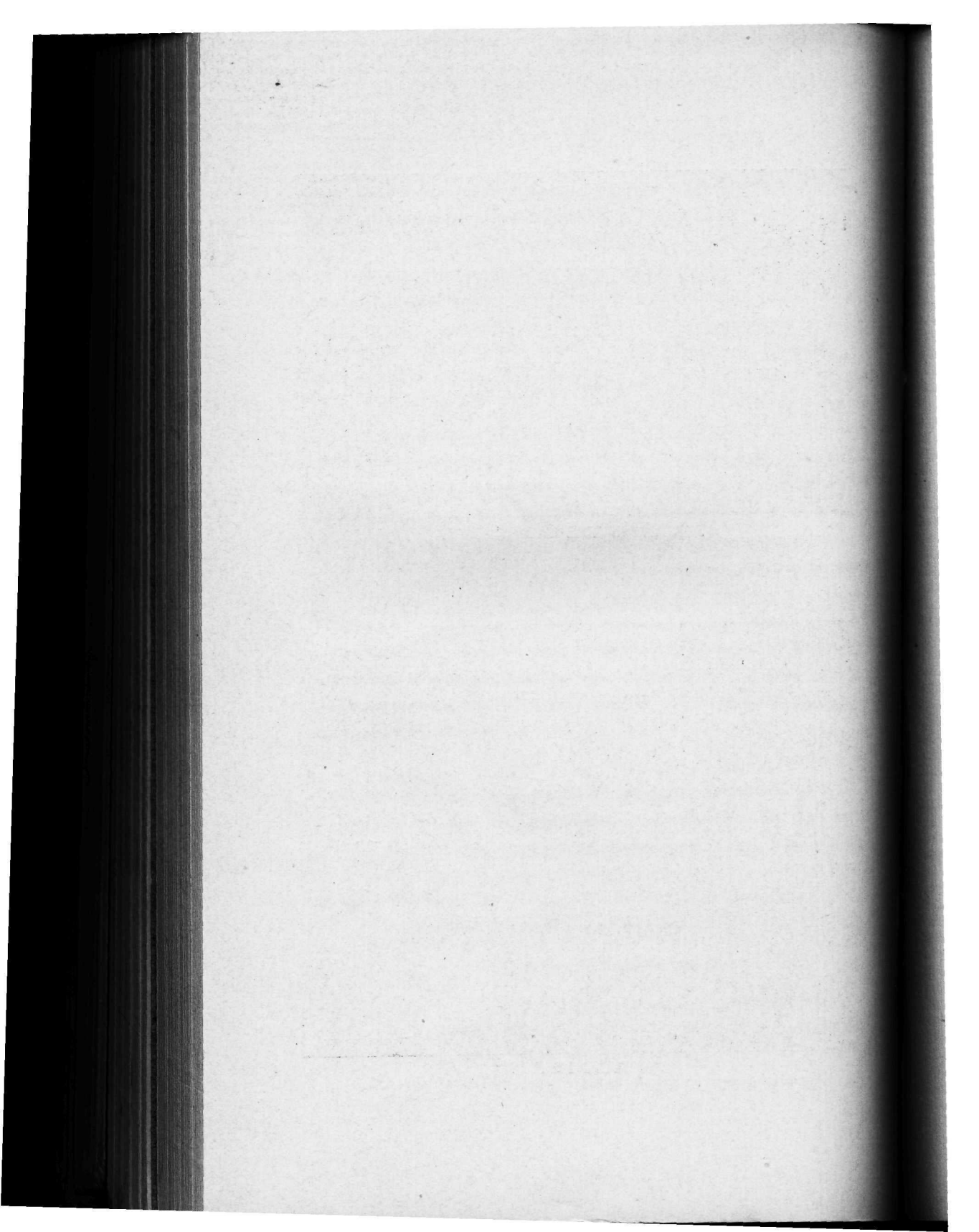
Gymnasium and athletic fee, \$10.00 for the year.



A ROOM IN THE LADIES' HALL



A STUDENT'S ROOM





## SCHOOL OF MUSIC.

---

Music is a profound modern interest, ennobling the individual, community and national life. In home and school, in social and artistic circles, the elevating influence of music is now recognized as never before. From a practical point of view, as a means of gaining a livelihood, music offers the teacher or performer a field limited only by his merits. To be a musician is to possess coveted gifts. In an educational sense the musician must be broader than his art. The true musician possesses culture and refinement, and is able in point of intelligence to maintain a position of dignity and respect among men. In a moral sense the musician is greater than his art, using his talents for the good of mankind. In an artistic sense the musician is not made by pretensions, hours of tuition and embellished diplomas.

To be a true musician one must be educated liberally and in an atmosphere of culture and refinement, under the inspiration of scholarly surroundings and expectations, in direct contact with influences and efforts consecrated to the well-being of society.

The Whitworth School of Music is based upon the following broad and manifest platform: Music requires scholastic ability for effective work; music is a means of culture, aside from the purely artistic elements; true musical education leads to a generous and helpful use of attainments; earnest, conscientious work and high artistic ideals must ever incite the musical ambitions of the successful student.

### SCHOOL METHODS.

The advantages of a musical education received in a School of Music over individual or private instruction are apparent. The musical atmosphere of an institution, the competition growing out of contact with others engaged in similar studies, the personal supervision of

teachers during practice, and the class and public recitals, with their unexcelled preparation for confidence and ease in public performance, and the many possibilities in ensemble or concerted playing and singing, are some of the more noticeable points of superiority of school or class methods over private instruction. The home life, the scholastic opportunities, the large library and the helpful institutional interests afford greater incentives than local or isolated conditions can possibly supply. In addition to these and other advantages, the rates of tuition on account of class or conservatory methods, are much less than such artistic talent would necessarily have to charge for private lessons.

The city offers many opportunities to hear excellent local talent. Eminent professional musicians, in visiting the Pacific Northwest, always include Tacoma in their tours. Meritorious programmes may be attended by music pupils, in company with departmental teachers, thus extending and liberalizing their knowledge of music. Whitworth School of Music is the leading school in the Northwest.

#### COURSES OFFERED.

Four courses of study are now offered. Voice Culture, Pianoforte, Violin, and Guitar and Mandolin. These courses are briefly outlined herewith.

#### THE PIANOFORTE.

ALBERTA V. MUNRO.

MARY KEEN WHEELER.

MARGARET E. PERSING.

#### PREPARATORY COURSE.

1ST GRADE.—The underlying principles of Music; rhythm; the relation of sounds; modes; intervals; staff; ear training; technique. Rhythmical scales and arpeggios. Preparatory Exercises, Schmidt transposed. Etudes: Vogt, Burgmuller, Krause, Bertini, Ehmant, etc.

2ND GRADE.—Kœhler, Op. 50; Czerny, Op. 139; Heller, Op. 47; Kullak, Op. 62; Schumann, Album for the Young (arranged in progressive order by Klauser). Sonatas by Janke, Gurlitt, Krause, Clementi, Reinecke. Preparatory Exercises, Carl Fæltten, transposed.



## INTERMEDIATE COURSE.

- I.—Germer Technics; Krause Trill Studies; Hasert School of Velocity, Op. 50; Heller, Op. 46; Berens; Bach; easier numbers from twenty-five two-part studies; Czerny School of Velocity, 2d and 3d Books; Raff; Vogt. Sonatas by Beethoven, Op. 49, Nos. 1-2; D major, Op. 26, No. 3; Clementi Sonatinas, Nos. 6-14-8; Haydn Sonatas; Raff Sonatille; Reinecke Maiden Songs; Mendelssohn, Songs Nos. 2-6-11-12-45, etc.
- II.—Cramer Bulow, selected studies; Bertini, Op. 66-177; Jensen, Op. 32; Heller, Op. 45 or 90; Bach, Three Voiced Inventions; Raff, Etudes; Gradus; Krause, Op. 5; Kœhler, Op. 128; Czerny, Op. 740; Moscheles Preludes; Beethoven Rondos; Sonatas by Hummel, Schubert, Mozart, Haydn (E flat major, No. 1); Beethoven, Op. 14, Nos. 1-2; Haydn Concertos.

## ADVANCED COURSE.

- III.—Technic. Tausig's or Jossefy's Daily Exercises; Carl Fælten's Book III.; Moscheles, Op. 70; Kullak Octave Studies; Kessler, Op. 20; Bach Preludes and Fugues; Mendelssohn Preludes and Studies; Thalberg Etudes; Beethoven Variations, Sonatas, Op. 7-22-26-28; Mendelssohn Variations, Op. 82-83; Bach partitas; Mozart Concertos; Hummel Concertos, A minor and A major.
- IV.—Chopin Etudes and Preludes; Carl Fælten's Technic, Book IV.; Bach Preludes and Fugues; English and French Suites; Mendelssohn Preludes and Fugues; Raff Suites; Chopin Nocturnes, Valses; Grieg Sonata, Op. 7; Concertos by Beethoven, Hiller, Moscheles, Weber.

## NORMAL COURSE.

The Normal Course is designed to prepare students who wish to systematize their knowledge so as to impart it to others. Two classes of children are trained by music students in this course. The children are taught the rudiments of music and trained to play their little pieces in all keys, easily transposing through scale degree and interval knowledge. This instruction is important for those who wish to become trained teachers. Ear training is especially emphasized. Two hours each week.

NORMAL TRAINING.—One hour method. Lectures and practical demonstrations in teaching before class.

Two hours teaching, regular classes of children, under supervision.

Course for one year, \$25.00; receiving Certificate for Teaching first three grades, if examination is satisfactorily passed.

Course in general training, for young students, classes of four, \$5.00 per term, one hour a week.

TRANSPOSITION, TECHNIC AND SIGHT READING.—Study of four and eight hand compositions.

Overtures, Concerted Rondos, etc., to be used in public performances.

Supervised and heard personally by Director once a month. All coaching for public performance by the Director.

### VOICE.

PROF. ALBERT GRAY.

The whole course of instruction is based upon the best methods of the old Italian and modern French and German schools of voice production.

#### PREPARATORY.

Tone placing, breathing, exercises, Solfeggio, sight reading, ear training, history of music, choral singing.

GRADE I.—Voice, solfeggio, piano, theory and language (French, German or Italian.)

GRADE II.—Voice, advanced solfeggio, ensemble practice, solo singing, advanced sight singing. One language, other than in Grade I.

GRADE III.—Oratorio. Opera. Concert Repertoire. One additional language.

### THEORY OF MUSIC.

PROF. W. G. REYNOLDS.

I.—Harmony. This course covers notation, the study of intervals and scales, the formation and connection of chords, principles of four-part composition and modulation. Exercises in harmonizing given basses and melodies.

II.—Harmony. Further study of modulation. Harmonic accompaniment to selected and original melodies. The writing of chants, hymns and chorales.

III.—Course in Harmonic Analysis.

IV.—Course in Formal Analysis.

### HISTORY OF MUSIC.

PROF. W. G. REYNOLDS.

I.—The historical development of music; history of opera and oratorio; development of instrumental music.

II.—Classical and romantic schools; development of the pianoforte; biographical study of the great composers.

## PIANO COURSE IN OUTLINE.

## FOR CERTIFICATE OF MUSIC.

## PREPARATORY COURSE.

FIRST YEAR—Two lessons weekly; two hours daily practice.

Latin (first year) 5; English (first year) 5; Bible, 1.

SECOND YEAR—Two lessons weekly, two hours daily practice.

Latin (second year) 5; Mathematics (first year) 5; Bible, 1.

THIRD YEAR—Two lessons weekly; three hours daily practice.

Mathematics (second year) 5; English (second year) 5; Bible, 1.

FOURTH YEAR—Two lessons weekly; three hours daily practice.

Latin (third year) 5; English (third year) 5; Bible, 1.

## COLLEGIATE COURSE.

FRESHMAN YEAR—Piano I. Theory I.

Mathematics (third year) 5; Latin I.-III., 4; Bible, 1.

SOPHOMORE YEAR—Piano II. Theory II.

English I.-III., 4; German, 4; Bible, 1.

JUNIOR YEAR—Piano III. Theory III. History I.

German I.-III., 4; French, 4.

SENIOR YEAR—Piano IV. Theory IV. History II.

## GENERAL INFORMATION.

Students sufficiently advanced to pass examination in the work of the first two years may begin in the course with the third year (Course III.).

All candidates for graduation must pursue in the school the courses of the third and fourth years (Courses III. and IV.).

Regular music students are required to take the courses in Theory of Music and History of Music, whether their special line of music be piano, voice or violin.

College students may elect Music, provided they practice not less than six hours weekly, and elect Theory as a part of their music work for at least one year.

Piano.—Two lessons weekly, with two hours daily practice, count as four units.

Theory.—Two exercises weekly count as two units.

REGULATIONS.—Music students are subject to the same regulations as the students of other departments. Tuition for the term must be paid in advance. No reduction will be made for absence from lessons.

PUBLIC RECITALS.—Public recitals by the pupils are given frequently throughout the year.

CLASS RECITALS.—Class recitals, in which all pupils take part, are given in the piano studio each month.

PUBLIC PERFORMANCES.—No student of the department will be permitted to take a musical part upon any public programme without the permission of the teacher in charge.

FREE ADVANTAGES.—

- (1) Concerts and Lectures given by the Musical Faculty.
- (2) Lectures on Music History.
- (3) Analysis Class.
- (4) Symphony Class.
- (5) Students' Recitals.
- (6) Use of Musical Library.
- (7) Lectures upon Sound by the Science Department.
- (8) Membership in Glee Club.
- (9) Normal class for practical work in teaching, except as stated above.

CHARGES.—The regular conservatory rates apply to all students alike, but music students taking scholastic work will be charged the uniform price of \$5.00 per term for each course pursued, whether preparatory or collegiate. No charge is made for Bible study. No "private pupil" charges will hereafter be made.

No deduction will be made for absence except in case of serious and protracted illness.

Excused lessons will be cheerfully made up before the end of the term.

EQUIPMENT.—The Piano Department has two large and artistic instruction rooms and well arranged practice rooms. A sufficient number of practice pianos is provided. The Tekniklaviers and several metronomes greatly enhance the working facilities.

The Vocal Department has ample facilities for effective work, including a fine studio and practice rooms.

The Violin and Mandolin Departments have convenient studios.

A small but well selected Musical Library is now an important accessory of this department.

#### TERMS.

Piano, two half-hour lessons per week for a term of twelve weeks .....	\$24.00
Voice, two half-hour lessons per week for a term of twelve weeks .....	\$36.00
Harmony, in a class of four, for a term of twelve weeks .....	\$ 5.00
Harmony, individual lessons, same as Piano.	
Rent of Piano for practice, one hour daily, per term of twelve weeks .....	\$ 2.50
Rent of Piano, two hours daily, per term of twelve weeks . . .	\$ 5.00

#### THE VIOLIN.

##### OLOF BULL.

The affiliated department of violin instruction is under the direction of Prof. Olof Bull, so well and so favorably known to the lovers of music as a master of the "king of instruments."

The course of instruction includes, among others, the following recognized studies:

- Hohmann, Method (Vol. I).
- Wohlfahrt, Op. 45 (Nos. I. and II.).
- Kayser, Op. 20 (No. 3).
- Alard, Violin School.
- Dont Studies, Op. 37.
- Kreutzer, Etudes.
- Schradieck, Exercises.
- Caprices, Fiorillo and Rode.

Progress in the studies assigned will depend upon the talent and industry of the student.

Advanced violin pupils will use concertos by Viotti, Rode, Kreutzer, De Beriot, Beethoven, Mendelssohn, etc.

TERMS.—\$1.00 per lesson, payable for the term of twelve weeks, in advance.

## MANDOLIN, GUITAR AND BANJO.

LEE R. GRIDLEY.

A new system is employed. The tedious finger exercises, devoid of melody, and other discouraging features of the old method are eliminated by the use of carefully selected melodies and progressive melody exercises, each one designed for a definite purpose, which makes the study a pleasure, and a pure tone and clean technic are obtained.

MANDOLIN.	GUITAR.	BANJO.
Schaeffer, Abt	Schaeffer, Schettler	Lagatree, Farland,
Seigel, Pettine,	DeLano, Weidt	Lansing, DeLano,
Knell and Brunover.	F. Sor and Corulli.	Bacon and Weidt.

Familiar airs, melodies and variations.

TERMS.—\$1.00 per lesson, payable for a term of twelve weeks, in advance.

## COMMERCIAL SCHOOL.

PROF. W. L. EDWARDS, M. Accts., Director.

Business offers a field limited only by the merits of the transactor. The term business might be defined as *any* occupation in which one engages for profit. The physician, the clergyman, the teacher, as well as the merchant, the bank president, the corporation lawyer, find daily use for business knowledge.

He who would be a leader of his fellow-men needs possess himself of culture and refinement, that he may be able in point of intelligence to maintain a position of dignity and respect among them. The keen competition of today almost demands this. Culture and refinement are not gained from books alone, but in an atmosphere of scholarly surroundings as well. Hence, a School of Commercial Science finds itself in a most congenial sphere when a part of a college devoted to a liberal education.

Our Business Course is thorough and practical, combining actual business practice with theory. Our principle is not in how short a time we can graduate a student, but how thorough and efficient we can prepare him for a successful business career.

As a great barrier that lies between most young people and an education is the expense, we have reduced the cost to the lowest possible figure consistent with first class instruction.

The Commercial Schools that compare favorably with ours are located in the business districts, where the rents and cost of living are much greater than here, and having no other means of support, are compelled to charge a much higher tuition than we.

Your expenses will be about one-half to accomplish the same work here as there, and at the same time your advantages will be greater.



## COURSES OFFERED.

There are three prescribed courses of study—Complete Commercial Course, Special Commercial Course, and Special Shorthand Course.

## COMPLETE COMMERCIAL COURSE.

The Complete Commercial Course is designed to prepare young people for the most difficult and responsible positions to be had in the business world, and embraces such studies as go to make up a thorough and comprehensive course of study, giving to the student a broad outlook and a firm grasp of the commercial situation, both at home and abroad. We invite your careful consideration of this course, that you may appreciate the broad training it affords.

FALL TERM. FIRST YEAR.	WINTER TERM. FIRST YEAR.	SPRING TERM. FIRST YEAR.
Bookkeeping English Grammar Business Arithmetic Penmanship Spelling	Bookkeeping English Grammar Business Arithmetic Penmanship Spelling	Bookkeeping Punctuation Rapid Calculation Penmanship Spelling
SECOND YEAR.	SECOND YEAR.	SECOND YEAR.
Business Practice Algebra English Amer. Gov. and Commercial Law	General History Algebra English Amer. Gov. and Commercial Law	General History Algebra English Commercial Geography
THIRD YEAR.	THIRD YEAR.	THIRD YEAR.
Shorthand Typewriting Higher English History (German, French or Spanish if desired.)	Shorthand Typewriting Higher English History (German, French or Spanish if desired.)	Shorthand Typewriting Higher English History (German, French or Spanish if desired.)

NOTE: If you have pursued any of the above studies in other schools of good standing and have grades therein, they will be accepted toward graduation from this course, thus materially shortening the time necessary to complete the course.

## EXPLANATION OF STUDIES.

I. BOOKKEEPING. The great variety of rulings in the books used, both in and outside of the Office Practice Department, make it almost impossible for the graduate to find a principal book in any business house with which he has not already become familiar.

In the beginning of this course the student is given a thorough drill in the principles of bookkeeping, upon the completion of which he passes directly into the Business Practice Department, where he has the opportunity of answering letters, making out and receiving checks, notes, drafts, and other business papers, and carrying out in detail all the necessary office practice incident thereto and called for by the transactions and exhibits which constitute this part of the course of instruction.

Lastly, the student enters the Office Department, which consists of general mercantile offices and the bank. Each office is equipped with a complete set of books such as are found in similar offices of business firms. When the student completes this part of the course, he goes out into the business world equipped with a practical knowledge of actual bookkeeping.

2. **COMMERCIAL ARITHMETIC.** The aim is to qualify the student to handle accurately, quickly, and intelligently the class of problems which arise in everyday life. A special study of percentage in all its applications, stocks and bonds, partnership settlements, interest, etc.

3. **COMMERCIAL LAW.** The purpose of this study is not to make lawyers of those who pursue it, but to teach them to discern the ways that lead from litigation and enable them to conduct their business dealings with an intelligent idea of their legal rights and limitations. The various subjects with which the business man should be familiar are explained here in sufficient detail to afford a correct knowledge of the law concerning them.

4. **COMMERCIAL GEOGRAPHY.** Commercial Geography deals with the relations of man to the world's work. Production, transportation, and distribution of commodities are among the great themes it discusses, and in these days of territorial expansion every citizen should be interested in this important and practical study.

5. **BUSINESS CORRESPONDENCE.** This is a branch of business education that receives our most careful attention. A very large amount of correspondence is done by the student during his course.

6. **PENMANSHIP AND RAPID CALCULATION.** Although all the branches in our course receive their due share of attention and consideration, we lay special stress on penmanship and rapid calculation. A plain style of penmanship without shade or flourish and one that can be of the most practical value is taught. One-half hour every day is given to drill in rapid calculations. Business men want good writers, and quick, accurate calculators.

7. **TYPEWRITING.** We place this subject in our business course, believing that no business course is complete without the ability to handle the typewriter rapidly and accurately.

8. **GOVERNMENT.** Includes a survey of the historical evolution of government, its origin, growth, and the present status of the governments of the world. This is followed by a careful analysis of the government of the United States as outlined in the Constitution. The aim is intelligent citizenship.

9. **ENGLISH.** Realizing the need of more thorough knowledge of the English language than is offered by the usual commercial courses, we have placed this sub-

ject in each year of the course, giving the student three full years of English work.

10. ELECTIVE STUDIES. Here is a great advantage in having a regular Business College in connection with a College doing higher literary work. Without extra expense the commercial student may study Algebra, Geometry, Language, Science, Advanced History, or any other study for which he is prepared.

#### SPECIAL COMMERCIAL COURSE.

The Special Commercial Course is designed to prepare young people for a successful career in any of the vocations of life with the least possible sacrifice of time and money, and to keep successfully the books in any office.

This course is identical with that of the leading business colleges throughout the United States, and can be completed in from six to nine months by persons of ordinary ability and fair education. Students may enter at any time. The branches are as follows:

Business Arithmetic, Business Penmanship, Letter Writing, Orthography, Rapid Calculation, Commercial Law, Commercial Geography, Advanced Grammar, Book-keeping, Business Practice in Wholesaling, Banking, Commission, Real Estate, Railroading, and Typewriting.

#### SHORTHAND COURSE.

"I advise parents to have all their boys and girls taught shorthand and typewriting. A shorthand writer who can typewrite his notes would be safer from poverty than a Greek scholar."—Chas. Reade.

This department of our school is devoted exclusively to instruction in shorthand and typewriting, that students may acquire in the shortest time possible the art of verbatim reporting. Its object is to equip young men and women to take positions as Private Secretaries, Stenographic Law Clerks, Court Reporters, Government Employees, and as Amanuenses in the various business houses throughout the land.

The course of study consists of Shorthand, Typewriting, Spelling, Business Correspondence, Penmanship, Letter Press Copying, Mimeographing, Manifoldng, Tabulating, and Office Work, Special Bookkeeping. These branches must all be taken to secure a diploma and the recommendation of the College for a position.

#### TUITION.

The tuition in either course offered in the Commercial School is \$16.00 per term (twelve weeks), in advance.

Students enrolled in other departments of the College will be charged \$5.00 per term each for Shorthand, Typewriting, or Book-

keeping. Such students electing both Shorthand and Typewriting will be charged for one subject only.

### DIPLOMAS.

Graduates from the Complete Commercial Course receive a diploma, carrying the degree of Bachelor of Accounts. Graduates from Special Commercial Course, or Special Shorthand Course, receive a diploma without a degree.

Diploma to graduates of the "Complete Commercial Course," \$5.00; to graduates of the "Special Commercial Course," or the "Special Shorthand Course," \$2.50.

### SHORTHAND AS A BUSINESS FOR YOUNG MEN.

Everyone knows that the young man who understands shorthand and typewriting can start out at a salary double that of the one who is ignorant of these branches. And this is only the smallest part of his advantage. The other one usually has to start as an office boy or in some other obscure position where he learns little or nothing of the business; the stenographer invariably does work which, if he is ambitious and wide-awake, will make him familiar with the business in a short time.

The unsurpassed advantages of shorthand and typewriting for young ladies have long been recognized, and scarcely need special mention. Everyone knows that there is nothing which offers more pleasant or profitable work to the young lady than these subjects.

The "Touch" system of typewriting is used in our school. The student is taught to write accurately and rapidly without looking at the keys of the machine, and is therefore enabled to write without being compelled to take his eyes from his notes to find the keys. No machine-operator is up to date who cannot write without looking at the key-board.

*If You are Deficient in English*, you can make up the same with us under a specialist, and at the same time complete the shorthand and typewriting work.

*The Time Required* to complete the course will depend largely on previous training. A persistent student should be able to complete the course in from six to nine months. Our graduates must be thorough and competent.

*Time to Enter.* Instruction in this work is largely individual and students are received at all times and given such work as is best suited to their needs.

*Backward Students* who may be deficient in any branch should not hesitate to come to us, as all such students receive our special care and individual instruction.

*Situations* paying good salaries can easily be secured for all who fit themselves to the work of an amanuensis with neatness and dispatch, and who have shown themselves trustworthy, courteous, and willing to earn the salary expected. The business world offers every advantage to the capable, industrious, honest young woman or man, but has no room for the dishonest or indolent.

# DEPARTMENT OF ART,

## COURSES IN ART.

MRS. FRANCES CRANDALL.

I.—DRAWING. Drawing from life, still life, and casts, in crayon, charcoal, pencil pen and ink or wash drawing.

Outdoor sketch classes are formed for the benefit of Art students.

II.—PAINTING. Painting in water colors given special attention, with abundant work in landscape painting. The landscape work is chiefly from nature, and will include composition of landscape and marine. The locality abounds in magnificent natural scenery which afford the student ample inspiration for the artistic ideal.

This course includes still life painting, out of doors and in the studio—flowers, fruits, combined with interesting objects for forms are employed.

III.—ILLUSTRATION AND DESIGN. This course is designed to combine landscape and still life in making illustrations for magazines, books and advertising matter; designs for book covers, wall paper, decorations, both practical and ornamental.

IV.—COMPOSITION. Compositions both pictorial and decorative with a view to practical application in illustrations, painting and architecture.

V.—DECORATIVE AND APPLIED ART. Theory and practice of design in line, mass and color. This course will include designing and working in stenceling, block-printing, hand wrought leather and metal. Also design and decoration of china.

## FEEES FOR TUITION.

Fees for tuition, \$12.00 per term for one lesson per week, three hours in length.

## SCHOLARSHIP PRIZE.

Four friends of the College have established a Scholarship Prize which at present consists of \$500.00, to be known as "The Long-Black-Urguhart-Marshall Scholarship Prize in Economics and Social Science." The purpose of the Prize is to encourage investigations in economical questions especially as they relate to the West and the Orient. Each year \$100.00 will be awarded to the successful contestants. The terms of the contest are briefly these:

1. The subjects for study selected by the Faculty, must be announced by March 1. The papers must be typewritten; five copies of which must be given to the Judges. Papers must be in by June 1.
2. The Faculty of the College will appoint three competent Judges, to whom the papers will be submitted, signed *nome de plume*.
3. The competition is open to all students in the College. There will be first, second and third prizes.

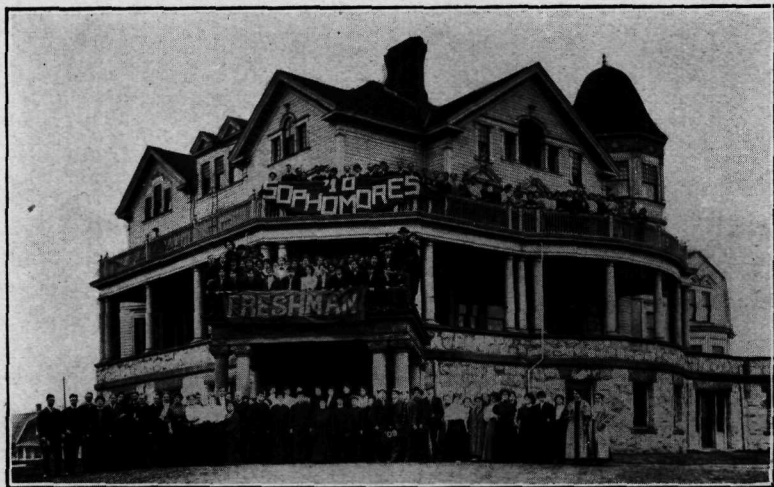
## SCHOLARSHIPS.

1. Nine scholarships have been established which yield the successful students, each year, \$54.00 each. Only honor students from accredited High Schools are candidates.

2. Four scholarships of \$1,000.00 each have been established through the benefactions of John H. Converse, Philadelphia; Hon. H. B. Silliman, Cohoes, N. Y., and Mr. D. K. Abrams, Ridgefield, Wash. These scholarships are given to worthy young men, who are studying for the Gospel ministry.

Frederic D. Metzger and Kenneth Ghormley both qualified in the Cecil Rhodes scholarship examination January 21, 1908. Mr. Metzger was the elected scholar to go to Oxford, England, this year. The success of these young men is indicative of the scholastic standing of Whitworth College.

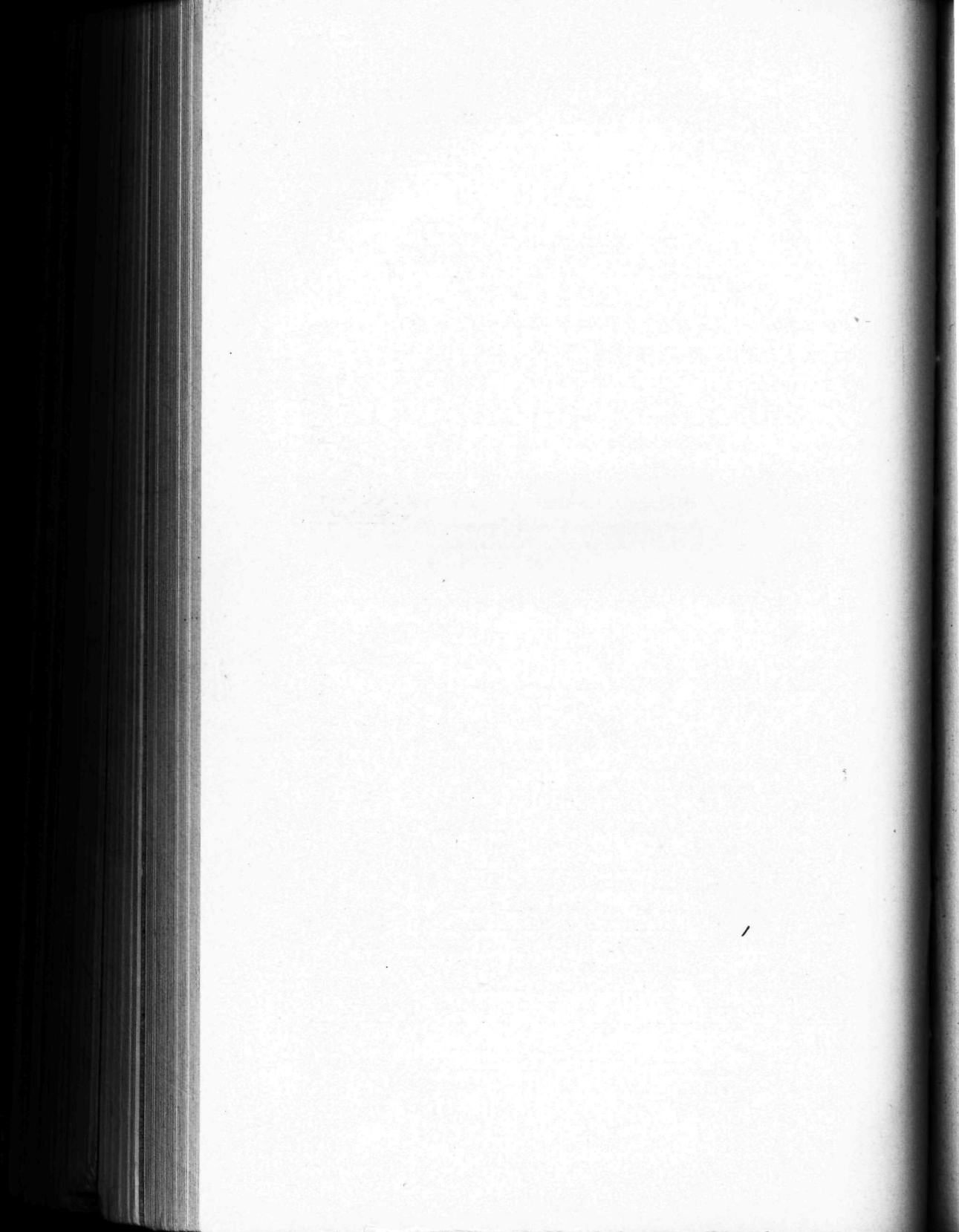




A STUDENT GROUP



CORNER OF CAMPUS



# STUDENTS.

## COLLEGE.

The classification of students in the College is based upon the following scheme—Freshmen, those who have credits up to 13 hours; Sophomores, those who have credits from 13 hours to 24 hours; Juniors, those who have credits from 24 hours to 46 hours; Seniors, those who have more than 46 credits. The following list does not include credits made during 1907-08. Present credits, therefore, are obtained by adding credits secured during the year ending June, 1908. So persons with no credit mark are in the Freshman Class.

Metzger, Frederic D., A. B.	Graduate Student	Tacoma.
Ayers, Ralph Erskine, A. B.	50 2/3	Everett.
Beaven, Mary Frances, Ph. B.	42	Tacoma.
Briggs, Walter Carl, A. B.	27 1/3	Harrington.
Bisson, Francis, Jr., B. S.		South Prairie.
Brachvogel, Albert, B. S.		Aberdeen.
Bergman, Hilda Axelia		Sedro-Woolley.
Christopherson, Olive, Ph. B.	11 2/3	Tacoma.
Colbert, Percy Fred, B. S.	47	Ilwaco.
Cox, Andora, A. B.	64	Tacoma.
Cox, Mary Clarinda, A. B.	39	Tacoma.
Clark, Laetitia, A. B.	32	Lancaster, Pa.
Doud, Richard Clarence, B. S.	24 1/3	Tacoma.
Grosscup, Thaddeus G., B. S.	62/3	Tacoma.
Chormley, Kenneth Irwin, A. B.	36	Tacoma.
Guy, David James, B. S.	17	Chehalis.
Gwinn, Bessie Amanda, Ph. B.		Garfield.
Gillam, Bessie Milford, Ph. B.		Centralia.
Glenn, Nancy Elvira		Tacoma.
Hunter, Helma Rachel, A. B.	18	North Yakima.
Hafari, Fukuichi, B. S.		Tacoma.
Heath, John L., A. B.		Tacoma.
Heilig, Reed W., B. S.		Fairbanks, Alaska.
Hutchison, Josephine Ruth, B. S.		Tacoma.
Hemphill, Elizabeth, B. S.		Auburn.
Hamblen, Hazel H., B. S.		Pendleton, Ore.
Harrison, Millard, B. S.		Seattle.
Izumi, Masakichi, B. S.		Tacoma.
Judson, Thomas Macoughtry, Ph. B.	23 1/3	Tacoma.
Johnson, Olga Marie, A. B.	55	Tacoma.

Jones, Winogene Blanch, Ph. B.	Buckley.
Judson, Edward Dougald, B. S.	Tacoma.
Kauffman, Barton Percival, B. S.	172/3Tacoma.
Kennedy, Palmer, A. B.	32 1/3Tacoma.
Leach, Ethel Mabelle, B. S.	61/3Tacoma.
Lewis, Winifred Lowell, B. S.	6 Mt. Vernon.
La Wall, Jessie Katherine, A. B.	38 Tacoma.
Longstreth, Henry, Jr., Ph. B.	17 Tacoma.
Lackey, Frances Hannah, A. B.	10 1/3Aberdeen.
Larsen, Louis Carl, B. S.	Tacoma.
MacLean, Margaret, B. S.	5 Tacoma.
MacSween, Sydney, B. S.	12 1/3Tacoma.
McCleary, Charles, B. S.	17 Tacoma.
McKinnon, Bessie Isabel, Ph. B.	Sumner.
Martin, Genevieve, Ph. B.	Tacoma.
Martin, Lulu Una, Ph. B.	Tacoma.
MacDonald, Marjorie, Ph. B.	Tacoma.
McClain, Georga Adelaide, B. S.	Sunnyside.
McMickle, Alda	Tacoma.
Ohno, Hayas, B. S.	53 Takuska, Japan.
Phipps, Fitch Lawrence, A. B.	47 Portland, Ore.
Paul, William Lewis, Ph. B.	22 Wrangel, Alaska.
Platt, William B., Ph. B.	9 2/3Seattle.
Phelps, Madge Stockton, Ph. B.	29 1/3Tacoma.
Redman, Grace Holdes, Ph. B.	15 Tacoma.
Rolleston, Gertrude Marion, Ph. B.	34 1/3Tacoma.
Robbins, Pearla, B. S.	33 1/3Tacoma.
Robinson, Katherine Maud, Ph. B.	18 2/3Buckley.
Robinson, Edna, A. B.	Buckley.
Roehl, Anna Marie	Auburn.
Rowley, Vadie, B. S.	Brighton.
Risdon, Lulu, B. S.	Brighton.
Rueber, Horace O., B. S.	9 Rochester, Minn.
Strout, Ethel Margaret, Ph. B.	24 Tacoma.
Smith, Mildred, B. S.	17 Tacoma.
Shibagaki, Seiro, B. S.	Miyasaki, Japan.
Schroeder, Clifford F., B. S.	Tacoma.
Schlott, May Cecil	E. Las Vegas, N. M.
Smith, Mary	Marysville.
Scott, Maude B., Ph. B.	6 2/3Kiona.
Strange, Edith Ruth, Ph. B.	Sedro-Woolley.
Skirving, Lawrence J., A. B.	O'Neill, Nebraska.
Towne, Raphael Statis, Ph. B.	26 Tacoma.
Turner, Joseph Richard, Jr., B. S.	17 Tacoma.
Teats, Ralph, B. S.	Tacoma.
Turnbull, Jean E.	Tacoma.
Wilcox, Mary Genevieve, B. S.	19 Tacoma.

Ware, Edith Caritt, Ph. B. ....	36 2/3	Spokane.
Willert, Margaret Elizabeth, A. B. ....	25 2/3	Tacoma.
Williams, David John, A. B. ....	29	Tacoma.
Wright, Helen Buckley, B. S. ....	3	North Yakima.
Wilson, Elva S., B. S. ....		Chinook, Mont.
Whitworth, Sidney Edwin, B. S. ....		Brighton.

## ACADEMY.

## THIRD YEAR

Allen, Lillian Annetta .....	Puyallup Reservation.
Ask, Cleon John .....	Skagway, Alaska.
Arntson, Emilie .....	Tacoma.
Briggs, Maurice .....	Harrington.
Biggs, Arline, Elizabeth .....	Tacoma.
Bickley, Kate Evelyn .....	McClusky, N. Dak.
Cornish, Emerson S. ....	Tacoma.
Cizek, George John .....	Tacoma.
Doud, Lee .....	Tacoma.
Dysart, Avis .....	Centralia.
Davies, Helen .....	Carbonado.
Denman, Edith .....	Tacoma.
Douglas, Walter .....	Seattle.
Dennis, Rollin W. ....	Tacoma.
Fox, Sarah Margaret .....	Tacoma.
Fleet, Lillian .....	Montesano.
Hegg, William .....	Sedro-Woolley.
Hoke, George Earl .....	Tacoma.
Halferty, Alice Elice .....	Aberdeen.
Jamison, Neal C. ....	Tacoma.
Kinkade, Robert L. ....	Auburn.
Lesh, Alma Clair .....	North Yakima.
Mustard, Florence Lillian .....	Montesano.
Munn, Florence Adelaide .....	Marysville.
Mashburn, Anna .....	Oakesdale.
McDonald, Chester G. ....	South Tacoma.
McRae, Ruby Mary .....	Tacoma.
Price, Hugh D. ....	Orchards.
Sonnema, Reka .....	Tacoma.
Smith, Magnolia .....	Tacoma.
Sherrod, Heisler Holt .....	Seattle.
Scott, Alvin Elton .....	Kiona.
Veach, J. Le Roy .....	Tacoma.
Warburton, Leota .....	Tacoma.
Willis, Camille .....	Tacoma.
Youngs, Mary Lathrop .....	Montesano.

## SECOND YEAR

Allen, Bernice Clare	Port Angeles.
Alway, Ralph Mark	Tacoma.
Bisson, Daniel G.	South Prairie.
Coles, Alice Irene	Valdez, Alaska.
Caldwell, Marion	Seattle.
Callaway, Lena Pearl	Kiona.
Crandall, Sara	Tacoma.
Denman, Grace	Tacoma.
Francis, Ruth	Centralia.
Fitzsimmons, Claude James	Tacoma.
Fox, Calvin Stewart	Tacoma.
Ford, John G.	North Yakima.
Ging, Chin	Seattle.
Hoke, Samuel A.	Tacoma.
Hurlburt, Irene Barbara	Puyallup.
Holgerson, Ralph	Tacoma.
Libbey, Earl A.	Tacoma.
Latshaw, Alice Leona	Tacoma.
Longstreth, Margaret	Tacoma.
Litton, Lillian M.	North Yakima.
McClure, Thomas N.	Tacoma.
Roberts, Lorena D.	Fairfax.
Smith, Martha Frankie	Tacoma.
Stewart, Tisbie Mary	Indianapolis, Ind.
Smith, Floy Jeanetta	Valdez, Alaska.
Shores, Marshall Fairfield	Tacoma.
Vergowe, Coy Clinton	Tacoma.

## FIRST YEAR

Anderson, George	Tacoma.
Amerman, Bertha Estelle	Tacoma.
Bertelson, Bartlett	Tacoma.
Bailey, Vernetta Mabel	Tacoma.
Billings, Gunda	Port Madison.
Brown, Helen Ruth	Valdez, Alaska.
Belyea, Thelma Victoria	Tacoma.
Biegert, Cornelia Anna	Seattle.
Biggs, Erma Louise	Tacoma.
Brown, Miriam	Tacoma.
Brown, Ruth O.	Lexington, Ore.
Barrett, Frederick John	Kattalla, Alaska.
Crosby, Lloyd R.	Tacoma.
Clark, Lester	Ridgefield.
Curtis, Harold Kinzer	Tacoma.
Delay, John	Steilacoom.

Dang, Shu Isun	Canton, China.
Ezume, Harry S.	Oakesdale.
Fraser, Lillian Zelah	North Yakima.
Fox, Sidney Wayne	Mt. Vernon.
Gordon, Fred Richmond	Salt Lake City, Utah.
Gard, Lillie	Tacoma.
Hintze, Effie Mary	Tacoma.
Heffron, William P.	Aberdeen.
Hultgren, Lorentz	Tacoma.
Hoard, Minnie Mae	Centralia.
Hattori, Yasu	Tokio, Japan.
Johnston, Vera	Aberdeen.
Knapp, Myra Belle	Auburn.
Keedy, Maude Bertha	Davenport.
Ludlow, Addie	Spanaway.
Larsen, Myrtle Elizabeth	South Bend.
Metzger, Esther W.	Tacoma.
Maulsby, Marguerite L.	Ephrata.
McLean, Rhoda Ernestine	Victoria, B. C.
Martin, Leigh	Tacoma.
McClure, Glen Amos	Tacoma.
Montgomery, J. Ray	Seattle.
Moore, Clyde S.	Tacoma.
Neilson, Howard	Seattle.
Nelson, Roy Willard	Tacoma.
Rudduck, Fay Eliza	Tacoma.
Smith, George Camden	Tahkeena, Y. T.
Takaku, George Kyujiro	Sakuyama, Japan.
Wilton, Edward J.	Fife.
Wilton, Edna D.	Fife.
Wells, Mabel Inez	Minneapolis, Minn.
Watson, Iris Fay	South Tacoma.
Watson, John	Kent.

### COMMERCIAL DEPARTMENT.

Anderson, George	Jones, Winogene
Barrett, Frederick	Knapp, Myra B.
Bickley, Kate	Ludlow, Adelaide
Bergman, Hilda	Mustard, Florence
Bertleson, Bartlett	McCleary, Charles
Belyea, Thelma	McClain, Georgia
Crosby, Lloyd	Mashburn, Anna
Clark, Lester	McRay, Ruby May
Coles, Alice I.	Munn, Florence
Dennis, Rollin	Montgomery, J. Roy
Delay, John	Neilson, Howard



Denman, Edith  
 Denman, Grace  
 Davies, Helen  
 Dykeman, Grace  
 Fitzsimmons, Claude  
 Francis, Ruth  
 Glenn, Nancy  
 Gordon, Fred R.  
 Hamblen, Hazel H.  
 Heffron, William P.  
 Hintze, Effie  
 Hoard, Minnie  
 Hultgren, Lorentz

Price, H. D.  
 Roehl, Anna  
 Scott, Maude  
 Sonnema, Reka  
 Shores, Marshall F.  
 Schroeder, Clifford F.  
 Schlott, May C.  
 Veach, Le Roy  
 Watson, Iris  
 Watson, John  
 Wilton, Edward J.  
 Youngs, Mary

## SCHOOL OF MUSIC

### PIANOFORTE

Allen, Bernice .....	Port Angeles.
Biegert, Cornelia .....	Seattle.
Bickley, Kate E. ....	McClusky, N. Dak.
Brown, Helen R. ....	Valdez, Alaska.
Briggs, Low .....	Tacoma.
Caldwell, Marion .....	Seattle.
Cox, Mary .....	Tacoma.
Coles, Alice .....	Valdez, Alaska.
Crandall, Dorothy .....	Tacoma.
De Baun, Katherine .....	Tacoma.
Dysart, Avis .....	Centralia.
Dykeman, Grace .....	Castle Rock.
Davies, Helen .....	Carbonado.
Fleet, Lillian .....	Montesano.
Fraser, Lillian Zilah .....	North Yakima.
Fox, Sarah .....	Tacoma.
Gibbs, Florence .....	Tacoma.
Greig, Marjorie .....	Tacoma.
Gillam, Bessie .....	Centralia.
Glenn, Nancy .....	Tacoma.
Halferty, Alice .....	Aberdeen
Hurlburt, Irene .....	Puyallup.
Howe, Idene .....	Tacoma.
Hutchison, Ruth .....	Tacoma.
Johnston, Vera .....	Aberdeen.
Keedy, Bertha Maude .....	Davenport.
Kilpatrick, Mary .....	Tacoma.
Kroeze, Nettie G. ....	Tacoma.
Leach, Ethel .....	Tacoma.
Lewis, Winifred L. ....	Mt. Vernon.

Leach, Mildred .....	Tacoma.
Latshaw, Alice .....	Tacoma.
Larsen, Myrtle .....	South Bend.
Loughlen, Sylvia .....	Tacoma.
Loughlen, Ira .....	Tacoma.
McClain, Rhoda E. ....	Victoria, B. C.
McDonald, Marjorie .....	Tacoma.
Maulsby, Marguerite .....	Ephrata.
MacLean, Margaret .....	Tacoma.
MacDonald, Anna .....	Tacoma.
Messinger, Gloe .....	Tacoma.
Messinger, Catherine .....	Tacoma.
McClain, George A. ....	Sunnyside.
Nippolt, Helen .....	Tacoma.
Nielson, Howard .....	Seattle.
Phelps, Madge .....	Tacoma.
Persing, Margaret E. ....	Tacoma.
Redman, Grace .....	Tacoma.
Rudduck, Fay Eliza .....	Tacoma.
Robinson, Katherine .....	Buckley.
Rolleston, Gertrude .....	Tacoma.
Roberts, Lorena .....	Fairfax.
Sturrock, Mary .....	Port Townsend.
Strange Edith .....	Sedro-Woolley.
Smith, Floy .....	Valdez, Alaska.
Turnbull, Jean E. ....	Tacoma.
Teeter, Alice C. ....	Tacoma.
Wilson, Elva S. ....	Chinook, Mont.
Wheeler, Lewis R. ....	Tacoma.
Wells, Mabel .....	Minneapolis, Minn.
Warburton, Leota .....	Tacoma.

## NORMAL CLASS

Cox, Mary .....	Tacoma.
Hurlburt, Irene .....	Puyallup.
Lewis, Winifred .....	Mt. Vernon.
Messinger, Gloe .....	Tacoma.
MacLean, Margaret .....	Tacoma.
Persing, Margaret .....	Tacoma.
Rolleston, Gertrude .....	Tacoma.
Robinson, Katherine .....	Buckley.
Turnbull, Jean E. ....	Tacoma.
Wilson, Elva S. ....	Chinook, Mont.

## VOICE

Allen, Lillian .....	Puyallup Reservation.
Allen, Bernice .....	Port Angeles.
Biegert, Cornelia .....	Seattle.

Caldwell, Marion .....	Seattle.
Cox, Mary .....	Tacoma.
Dykeman, Grace .....	Castle Rock.
Fleet, Lillian .....	Montesano.
Fraser, Lillian Z. ....	North Yakima.
Harrison, Millard .....	Seattle.
Halferty, Alice .....	Aberdeen.
Lewis, Winifred .....	Mt. Vernon.
Platt, William .....	Seattle.
Rowley, Vadie .....	Brighton.
Persing, Margaret .....	Tacoma.
Sonnema, Reka .....	Sedro-Woolley.
Strange, Edith .....	Tacoma.
Smith, Floy .....	Valdez, Alaska.
Schlott, May C. ....	E. Las Vegas, N. M.
Wright, Helen .....	North Yakima.

## HARMONY

*Advanced—*

Kilpatrick, Margaret .....	Tacoma.
Leach, Ethel .....	Tacoma.
MacLean, Margaret .....	Tacoma.
MacDonald, Anna .....	Tacoma.
Phelps, Madge .....	Tacoma.
Robinson, Katherine .....	Buckley.
Teeter, Alice Carrie .....	Tacoma.

*Beginning—*

Allen, Bernice C. ....	Port Townsend.
Biegert, Cornelia .....	Seattle.
Cox, Mary .....	Tacoma.
Dykeman, Grace .....	Castle Rock.
Fleet, Lillian .....	Montesano.
Messinger, Gloe .....	Tacoma.
McClain, Georgia .....	Sunnyside.
Rolleston, Gertrude .....	Tacoma.
Strange, Edith .....	Sedro-Woolley.
Turnbull, Jean E. ....	Tacoma.
Wilson, Elva .....	Chinook, Mont.

## HISTORY OF MUSIC

Cox, Mary .....	Tacoma.
Leach, Ethel .....	Tacoma.
MacDonald, Anna .....	Tacoma.
McClain, Georgia .....	Sunnyside.
Strange, Edith .....	Sedro-Woolley.
Turnbull, Jean E. ....	Tacoma.
Wilson, Elva .....	Chinook, Mont.

## ART.

Allen, Deborah .....	Tacoma.
Biegert, Cornelia .....	Seattle.
Brown, Helen R. ....	Valdez, Alaska.
Caldwell, Marion .....	Seattle.
Coles, Alice .....	Valdez, Alaska.
Cosper, L. M. ....	Tacoma.
Crandall, Sara .....	Tacoma.
Crandall, Ruth .....	Tacoma.
Doud, Neva .....	Tacoma.
Denman, Edith .....	Tacoma.
Dennis, Mrs. J. A. ....	Chehalis.
Deemer, Carl .....	Tacoma.
Easterday, Virginia .....	Tacoma.
Francis, Ruth .....	Centralia.
Garretson, Susie .....	Tacoma.
Hirsch, Lillian .....	Tacoma.
Lamson, Katherine .....	Tacoma.
Latshaw, Alice .....	Tacoma.
Litton, Lillian .....	North Yakima.
McDonald, Marjorie .....	Tacoma.
Miller, Anna .....	Tacoma.
McRae, Ruby M. ....	Tacoma.
Palmer, Irene .....	Tacoma.
Roberts, Lorena .....	Fairfax.
Rudduck, Fay .....	Tacoma.
Stewart, Tisbie .....	Indianapolis, Ind.
Wells, Mabel .....	Minneapolis, Minn.
Wright, Helen .....	North Yakima.
Wright, Dorothy .....	Tacoma.

## MECHANICAL DRAWING.

Bisson, Francis	Libby, Earl
Holgerson, Ralph	Stores, Marshall
Judson, Dugald	Vergowe, Coy C.
Harrison, Millard	

## SCHOOL OF ORATORY.

Ayers, Ralph .....	Everett.
Brown, Ruth .....	Lexington, Ore.
Billings, Gunda .....	Port Madison.
Chin, Ging .....	Seattle.
Caldwell, Marion .....	Seattle.
Colbert, Percy .....	Ilwaco.
Cox, Andora .....	Tacoma.
Dang, Stanley .....	Seattle.

Ezumi, Harry	Oakesdale.
Fraser, Lillian	North Yakima.
Hattori, Yasu	Tokio, Japan.
Halferty, Alice	Aberdeen.
Heath, Horace	Tacoma.
Heath, Bert	Tacoma.
Izumi, Masakichi	Tacoma.
Johnson, Olga	Tacoma.
Johnston, Vera	Aberdeen.
Kinkade, Robert L.	Auburn.
Litton, Lillian	North Yakima.
McDonald, Marjorie	Tacoma.
McLean, Rhoda E.	Victoria, B. C.
Nippolt, Helen	Tacoma.
Phipps, Laurence	Portland, Ore.
Platt, William	Seattle.
Risdon, Lulu	Brighton.
Roth, Margaret	Tacoma.
Skirving, Lawrence	O'Neil, Neb.
Smith, Floy	Valdez, Alaska.
Shibagaki, Seira	Miyasaki, Japan.
Takaku, Geo. Kyujiro	Sakuyama, Japan.
Warburton, Leola	Tacoma.
Williams, David	Tacoma.

#### PHYSICAL EDUCATION.

Allen, Lillian	Hullgren, Lorentz
Alway, Ralph	Hegg, William
Allen, Bernice	Johnson, Vera
Bisson, Daniel	Halferty, Alice
Bailey, Vernete	Longstreth, Margaret
Bergman, Hilda	Latshaw, Alice
Biggs, Erma	Litton, Lillian
Brown, Ruth	Martin, Lulu
Billings, Gunda	Martin, Genevieve
Cole, Alice	Munn, Florence
Christopherson, Olive	Maulsby, Margarite
Caldwell, Marion	Mustard, Florence
Curtis, Harold	McLean, Rhoda
Dysart, Avis	McClure, Thomas
Denman, Grace	McClure, Glenn
Ford, John	McDonald, Chester
Fox, Calvin	Nippolt, Helen
Fox, Sidney	Redman, Grace
Fleet, Lillian	Smith, Martha F.
Fitzsimmons, Claude J.	Smith, Mary
Gwinn, Bessie	Smith, Mildred

Gillam, Bessie  
 Ging, Chin  
 Jones, Winogene  
 Holgerson, Ralph  
 Hoke, Samuel  
 Hemphill, Elizabeth

Strange, Edith  
 Smith, George C.  
 Sherrod, Heisler  
 Wilson, Elva  
 Wilcox, Genevieve  
 Wilton, Edward

SUMMARY OF ATTENDANCE.

Graduate Students .....	1	
Seniors .....	6	
Juniors .....	17	
Sophomores .....	13	
Freshmen .....	46	
	<hr/>	
Total .....		83
Third Year Academy .....	36	
Second Year Academy .....	27	
First Year Academy .....	49	
	<hr/>	
Total .....		112
Commercial .....	47	
Piano .....	61	
Voice .....	19	
Harmony .....	18	
History of Music .....	7	
Normal .....	10	
Art .....	29	
Mechanical Drawing .....	7	
Oratory .....	32	
Physical Culture .....	54	
	<hr/>	
Total .....		284
	<hr/>	
Total registration in all Departments .....	479	
Deduct those counted twice .....	249	
	<hr/>	
Total number of different students enrolled .....	230	

