

1920

Natsihi Yearbook 1920

Whitworth University

Follow this and additional works at: <http://digitalcommons.whitworth.edu/yearbooks>

Recommended Citation

Whitworth University, "Natsihi Yearbook 1920" Whitworth University (1920). *Natsihi Yearbook*. Paper 3.
<http://digitalcommons.whitworth.edu/yearbooks/3>

This text is brought to you for free and open access by the University Archives at Whitworth University. It has been accepted for inclusion in Natsihi Yearbook by an authorized administrator of Whitworth University.

1920



WHITWORTH
HERITAGE
COLLECTION

LB
3621.67
.W5
1920

Whitworth College Library



0 0068 00197386 3

NATSIHI

NATSIHI

WHITWORTH COLLEGE LIBRARY
SPOKANE, WA 99251

FOREWORD

HOPING that this issue of *The Nat-
sihi* may recreate in the minds of
its readers the spirit dominating the life
at Whitworth College, and present a
true and interesting account of the year,
the Student Association offers this book
to the faculty, students and friends of
the College.

NATSIHI

DEDICATION

THE students of Whitworth College present this publication, dedicated to the Alumni who have so heartily endeavored to continue the promotion of the true Whitworth Spirit manifested since 1890 when the College sent forth its first class.

Page Three

NATSIHI

NATSIHI STAFF



CATHERINE E. GUNN.....*Editor-in-Chief*
VICTOR VAUGHAN.....*Business Manager*
JESSE PHILLIPS.....*Advertising Manager*
HELEN M. WAIT.....*Associate Editor*
RUSSELL F. PEDERSON.....*Associate Editor*
FLORENCE BEATON.....*Staff Artist*



NATSIHI

700 PAGES IN
ADVANCE - NEXT
LESSON



TEACHING

NATSIHI

CHARLES A. BARRY

State College of Washington, honorary M. A.
Acting President and Head of Department of Education and
Modern Languages.

"True-hearted, whole-hearted, faithful and loyal."

EDNA M. ROBINSON

University of Chicago, A. B.; A. M.
Johns Hopkins University, Ph. D.
Head of Department of English and Public Speaking.

*"Her book of light here learning spread;
Here the warm breast of youth
Was won to temperance and truth."*

THOMAS MOSS

New England Conservatory of Music.
Head of Department of Music.
*"Music resembles poetry: in each
Are nameless graces, which no method teach,
And which a master's hand alone can reach."*

NATSIHI

HAZEL L. PARKS

Columbia University, B. S.

Head of Department of Home Economics.

*"Where love is there is no labor; and if there be labor, that
labor is loved."*

JAMES H. BEACH

Kansas State Normal at Emporia, B. S.

Columbia University, M. A.

Head of Department of History and Social Science.

"Man, know thyself! All wisdom centers there."

WILLIAM DANIEL REES

State University of Ohio, B. A.

Head of Department of Mathematics.

"Life is real, life is earnest."

HAROLD F. HOLCOMBE

University of Washington, A. B.

Special Instructor in Biology.

*"The greatest man is he who chooses right with the most
invincible resolution."*

N A T S I H I

WILLARD H. ROBINSON

University of Chicago, A. B.; Ph. D.
McCormick Theological Seminary, B. D.
Head of Departments of Bible and Classics.

"The fortitude of a Christian consists in patience, not in enterprises which the poets call heroic, and which are commonly the effects of interest, pride, and worldly honour."

ELTON R. DARLING

Southern Minnesota, B. S.; Ph. D.
Head of Department of Chemistry.
"His thoughts so busy ever—all alive!"

ELEANOR SICKELS

Whitman College, B. A.
Instructor of Academy
*"She'll with her bring joy divine,
All that's good, and all that's fine."*

MARGARET M. LOGAN

Coeur d'Alene College.
Registrar and Secretary to the President.
"There is no music in the life like happy laughter."

NATSIHI

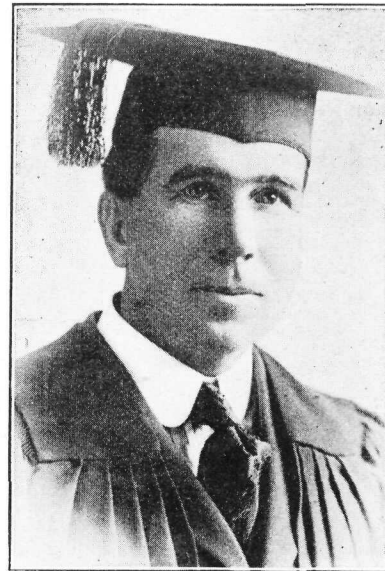


FRANCES STUBBLEFIELD is graduating from the extension department. She has done much toward organizing Senior activities, and has proved herself, also, an efficient member of the "eats" committee. Athletic, capable, enthusiastic, and full of fun, she is classed as a good Senior.

"She is of so free, so kind, so apt, so blessed a disposition, she holds it a vice in her goodness not to do more than she is requested."

L. D. GILKEY is a Senior who makes the most of his college days. His college education is not confined to books because he is after usable knowledge rather than credits. Modest, quiet, and conscientious, he has proved himself a man each Senior will be glad to hail as "classmate."

*"Rare compound of oddity, frolic, and fun,
To relish a joke, and rejoice in a pun."*



HELEN

Soph
maini
herse
nurse
lessor
on he

"Min
No hate

NATSIHI

HELEN MARY WAIT came to Whitworth as a Sophomore and has been with us through the remaining three years. In that time she has proved herself an indispensable part of our dormitory. She nurses headaches, cures blues, acts as coach for lessons which no one else can get, besides carrying on her own work effectively.

*"Mine be the heart that can itself defend—
No hate to the foe, all devotion to the friend!"*



CHRISTIAN BROCAR believes in duty first, but he is always ready for fun. He is "game" for anything from a picnic to the hardest job. He has worked hard to join the class and has proved himself a worthy member.

*"To hallow'd duty here with a loyal and heroic
heart,
Bind we our lives."*

NATSIHI



AGNES FINNEGAN is a jolly person to know. On a picnic she displays great ability as a cook. She is sincere in whatever she undertakes, whether it be cooking or teaching. Her practical knowledge has proved her one worthy of graduation.

*"I have ease, and I have wealth,
And I have spirits light as air;
And more than wisdom, more than wealth,
A merry heart that laughs at care."*

G. CARL WELLER took his entire college course at Whitworth. During this time he has displayed a good business head and executive ability. For this reason he was elected to the chair of President of the Student Association. Although he is the youngest member of his class, he is thoroughly developed and ready for graduation.

"There is not a moment without some duty."



NATSIHI

FAYE C. WOOLERY has been a loyal Whitworthian from her first day here. With her heart as fiery as her head, she has plunged into the college activities with a zest that put "pep" into the parties and encouragement into the games.

"I am sure care's an enemy to life."



RUSSELL F. FEDERSON has taken his entire college course at Whitworth. His ministerial duties have taken him away very frequently, yet he has been with us enough to have left a distinct influence. As Vice-President of the Student Association he proved his worth and showed executive ability coupled with earnestness and sincerity. He has entered heartily into college activities and has done much to put the spice into our parties.
"Of right and wrong he taught."



MRS. D. ESTELLA RIBLET would rather keep house than anything else and considers herself better at it than teaching, yet she is a successful teacher. Her pleasant laugh adds to any good time. She is a true and successful Senior.

*"It warms me, it charms me,
To mention but her name;
It heats me, it beats me,
And sets me a' on flame."*





THE JUNIOR CLASS

There is no doubt but that the class of '21 is the most individual class at Whitworth. It is the only class in college that gets along without class discussion when deciding important items such as colors and motto. The family motto of the class president was chosen. "*Aut pox, aut bellum*" keeps the class united and of one mind. Combining the colors of the school with those of the organization in which the class is most interested, the colors black and gold were selected. The class is individual in support of all school activities, whether they be ball games or parties. The French Club, the Spanish Club, and Beta Phi Epsilon are the only organizations of note in which the Junior class is not represented.

The class of '21 believes in good times. It also likes to entertain. So on the evening of Friday, May 21st, at President Barry's home, we made the Seniors forget their troubles for a few hours. For the first time, the Seniors saw their class colors used as decorations. Streamers of blue and gold crowned the rooms and made them most attractive. After an evening of unusual games and contests, a delicious supper was served. All the guests departed, carrying with them light hearts and merry smiles.





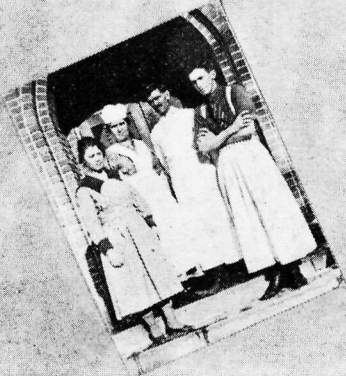
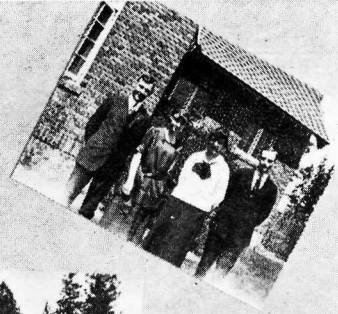
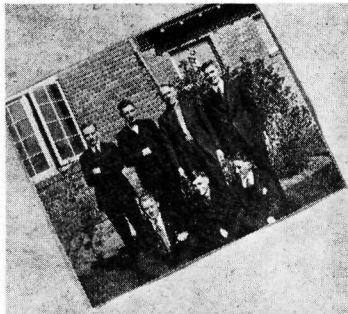
THE SOPHOMORE CLASS

A jolly sweet smiling young lass,
Jennie Borgeson of the Soph Class,
Held the president's chair
And I do declare,
With high marks her studies she'll pass.

The best orator here at the school
Studies Greek very hard as a rule.
Murray Jones is his name,
And he's winning his fame
By a head that is level and cool.

There is a young Sophomore named Tully,
Who wouldn't his class records sully.
He's at home in the lab
And always on tab,
And no one can say he speaks dully.





NATSIHI



THE CLASS OF TWENTY-THREE

The Freshman Class of Whitworth College is like unto the shining sun, around which all the lesser planets revolve. Far from being overshadowed by the upperclassmen, or embarrassed by the Preps, the Freshmen find in these a suitable background which brings out their fullest beauty. Is it a question of numbers? The Freshman Class is overwhelmingly the largest class in school. Is it a matter of scholastic abilities? Not even the Seniors can boast of a student of Mr. Scates' abilities. Is it a question of athletics? This class has more than its quota of all-around athletes. Some class! Xanthippe, some class!

And as to its social events, every Freshman party has been voted an unqualified success. The party held at the home of Mr. and Mrs. Robert Moore was exceptionally lively. The excitement was heightened by the rumor that a band of wild and lawless Preps, with evil designs on our refreshments, was near at hand.

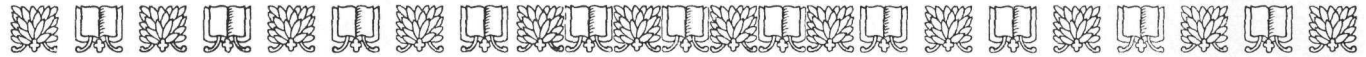
A little party was given the Freshman boys by the Preps, March 2nd. Classes were adjourned for the day and during the morning the Freshman boys lay on the campus, blankets being provided. Here they were permitted to watch the fleecy clouds drift by overhead, to hear the robin's cheerful note, and to heed the other signs of Spring. In the afternoon a pleasant surprise was offered by the way of an auto ride to different scenic spots of the surrounding country. The fact that they were obliged to walk back did not lessen the pleasure a particle.

The Freshman Class is extremely fortunate in their faculty advisor. Mr. Beach has taken an active interest in their activities, as well as acting as host on many occasions.



GRADUATING PREPS

- ELIZABETH DUDLEY—"Liz"; "For the luf of Mike"; Class Secretary and Treasurer; Girls' Glee Club; French Club; Delta Rho Phi Club; Class Play; ambition: to be a cow-girl; "Oh, where is Bill?"
- MARTHA BEACH—Class President; President Delta Rho Phi Club; Spanish Club; "A prof's daughter, does as she ought ter; a good scout, the best out."
- GEORGE McMAHON—"George"; Class Sergeant-at-Arms; Class Play; Football; Baseball; Basketball; "Old Man," bold man, base man, Irishman, last of all—ladies' man.
- MARTHA SMITH—"Ikey"; "Oh, Paul, Paul dear"; Treasurer Delta Rho Phi Club; French Club; Spanish Club; "A lot of weight, a lot of wit; Life and humor have made a hit."
- CLAUD JENSEN—"Cy" and "Ole"; Sacre' de Bulio; Class Play; Prep Yell Leader; wants to be a dancing doctor; he studies hard and is getting rich on the store.
- JUANITA DRAKE—"Jonnie"; Class Play; Delta Rho Phi Club; Spanish Club; "A naughty lamp, a little vamp; A lively step and lots of pep."
- JULIA PALAGGE—"Judy"; "I can't be bothered"; Class Play; Spanish Club; French Club; Delta Rho Phi Club; The campus, the moonlight and someone.
- FRANCES HERRON—"Frances"; Class Play; Delta Rho Phi Club; Secretary Literary Society; Glee Club; "Her life is a blank—She keeps thinking of Frank; Yet the Fourth Year Prey Play, She alone saved the day."
- HENRY ROSE—"Cuban Rose"; "Gee See Whiz"; President Spanish Club; Baseball; Class Play; Football; Courtly Cuban manners; a desire to beat up "Guy"; the real Spanish lingo, and a fondness for his pipe and the ladies.
- BEATRICE WARNER—"Bee"; "Oh, for cat's sake"; Class Play; French Club; Class Vice-President; Delta Rho Phi Club; Prep reporter for the Whitworthian; "A valuable girl, a genuine pearl—The cleverest lass in the Fourth Year Prep Class."
- LOIS HANSCOM—"Lois"; "My word"; Spanish Club; French Club; Glee Club; Secretary Delta Rho Phi Club; "High grades, some girl; Her elocution is a whirl."



First, Second and Third Year Preps

The members of the first, second, and third year classes of the Preparatory Department of Whitworth have helped considerably in all student activities this year. They have worked side by side with the College students in a true Whitworth spirit and have had representatives on the football, basketball, and baseball teams.

The first year class put on a very creditable play the latter part of the school year under the direction of Miss Eleanor Sickels, their English instructor. The members of this class are: Lester Campbell, president; Edna Beach, James Hoffman, Margaret Auld, Maxine Sheser, and Montana Williams.

The second year class contains quality rather than quantity. Marjorie Potter is its only member.

The members of the third year class are: Mildred Angle, Donald Cramer, William Manning, and John McMahon. All four have taken an active part in school events.



SOCIAL EVENTS

We're fond of study and we like to work, but we have never been known to be too busy to have a good time. Each week sees at least one jollification of some kind, but there are some which stand out above the rest because of certain characteristics.

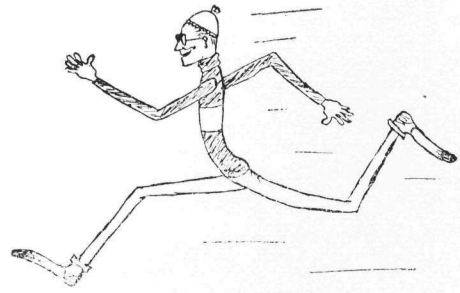
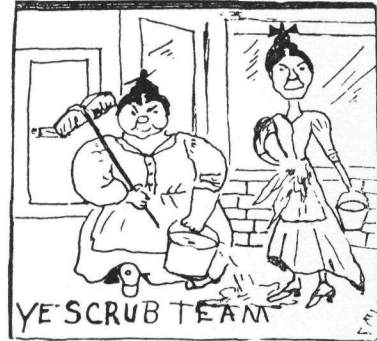
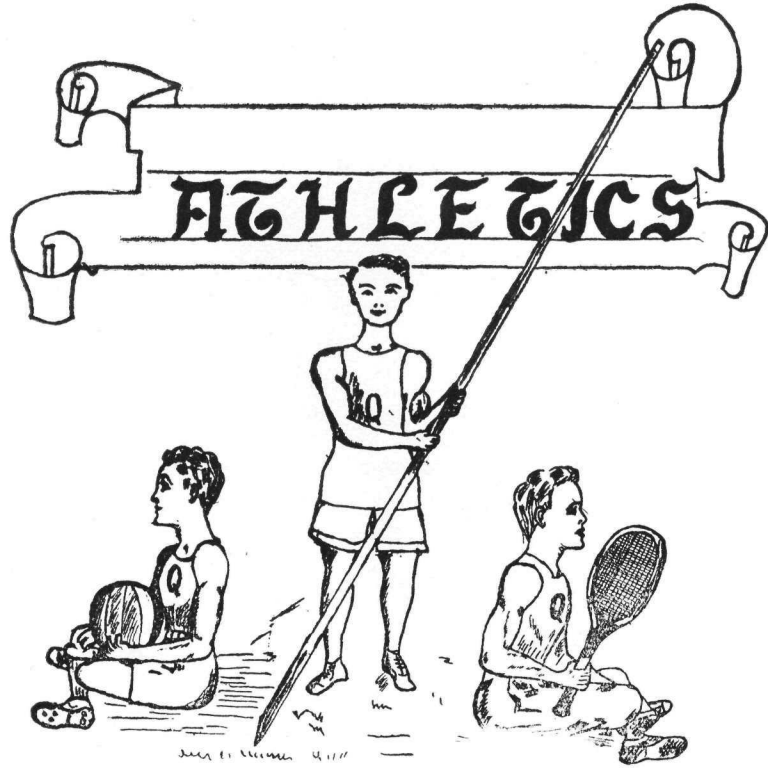
The first big party of the year came about October 31st. Spooks? The woods were full of them. Ghosts? The very stories of them make us shiver yet. We cast aside our fears and had a mighty fine time till the clock struck ten. Then we had to finish our Hallowe'en with spooky dreams.

Few ever dreamed when they came to Whitworth that this year would find them abroad, but we were so privileged, one evening, with Dr. and Miss Robinson as guides. The interesting stories of their trip abroad and their valuable collection of curios and scenes from every corner of the earth, made us feel perfectly acquainted with our brothers across the deep.

On March 17th the town students with extension and faculty entertained the residents of the dormitories in a fashion so strictly Irish that St. Patrick himself would have been at perfect ease. The music took us back to Ireland and the "eats"—baked Irish potatoes, straight from the oven. A picture of those who arrived on time was taken, but those who were not so prompt formed the Lirpa Loof Circle, and on April Fool's day had a party of their own, to get a picture. We've never heard what those did who did not get in either picture. Both these parties were held in the Chamber of Commerce Hall.

On April 16th, the Tennyson-Browning Club entertained the extension department with a strictly Tennyson-Browning program, at the conclusion of which they conducted them to the club room, where music and refreshments were enjoyed. As a token of appreciation for their playing done during the afternoon, the baseball nine were invited as honor guests.

We are not real sure but maybe it was a little foresight when Professor Beach asked us to come to a wiener-roast after the game. Well, we may not have scored much in the afternoon, but the way the pine cones flew in the evening was anything but slow, and we were so busy consuming the wieners and buns that we forgot all about Spokane U. We had a fine game and a wonderful party.



N A T S I H I

WHITWORTH students have developed a wonderful enthusiasm for every line of true sport. Defeats, difficulties, and tremendous obstacles cannot and do not discourage where the partakers of battles make every mistake a lesson to lead forward to ultimate success. Likewise, the Whitworth athletes have made every mistake of the present year a well-learned lesson in their course.

FOOTBALL

It is evident that football requires a large number of players and a football player must have physical as well as mental excellences. This year, Whitworth has not had a large number of men, she has not had many born football players, she has had enough to play some strong games. Although the men were most all new at the sport they learned fast and gave good account of themselves. The practice game which they lost to the Lewis and Clark High School team put enough "pep" into them that they scored victory over Spokane University. When the game with the Sandpoint High School was played, the field was deeply covered with slush and ice. Our men encountered great misfortune: Captain Phillips broke his leg, and other players were confined to their beds for days because of over-exposure. On account of the lack of substitutes, it was necessary to discontinue the schedule.

BASKETBALL

Basketball was looked forward to with high hopes. Practice games were closely contested and some of them lost by only a small margin. By accident a game was lost to Spokane College on one point. The game with Spokane University was also lost. The outbreak of the "flu" epidemic made it necessary to withdraw from the league after only two of the games had been played.

N A T S I H I

BASEBALL

Baseball prospects were lowered before the season opened when two of the experienced players left school. The very poor field led to a good deal of discouragement on the part of the team, but the players hopefully turned out with the desire to bring themselves to a position in which they could win. Although the games were lost, every man which comes back next year will be ready and able to play a big part in a successful year.

TENNIS

One sport in which everyone was intensely interested was tennis. The courts were in poor condition at the beginning of the year, but one fine cinder court was made and the intentions are to make another next year. There were a few experienced players in the college and all the time possible was spend in practice. The tournament between Cheney Normal, Spokane U., and Whitworth proved that tennis is to be henceforth a regular sport at Whitworth College.



WHITWORTH LYCEUM COURSE

THE student body has been very fortunate this year in having a well prepared Lyceum course which has been interesting and educational.

The first number was a Shakespearian program presented by the Public Speaking class under the direction of Miss Edna M. Robinson. This was followed by a stereopticon lecture by Dr. Willard H. Robinson, on "Mt. Sinai." This number was of great interest as Dr. Robinson has spent a great deal of time in Palestine, and the slides, which are reproductions of his own prints, were tinted in Jerusalem. The third number was a musical program, given by the Department of Music. Much credit is due Professor Thomas Moss, who has worked with tireless energy to bring this department to a high standard. We were very fortunate in securing, as the fourth number of our Lyceum course, pupils of Miss Ivaloo Pearl Eddy of Spokane. The program was exceptionally good and was greatly appreciated. For the final number, the Girls' Glee Club again appeared. The special feature of the evening was a piano solo by Mrs. Esther Cutchin Moss. The program was varied by solos and readings by members of the student body.

The interest shown in the Course has been gratifying and has been used as a means of bringing the students in touch with the people of the community.



NATSIHI



Organizations

JRM

The title 'Organizations' is presented in a large, white, serif font against a solid black rectangular background. The letter 'O' is highly decorative, featuring intricate, swirling flourishes that extend upwards and to the left. Below the main text, there are several smaller, elegant, white scroll-like flourishes. The initials 'JRM' are printed in a small, simple font at the bottom right corner of the black box.

Student Association

WITH the opening of the new school year and the many functions which necessarily occupied the students' time and attention, it seemed for a time as if the student body would not find time enough to gather together even for a short discussion as to plans for the school year. The members of the Senior and Junior classes, however, met and voted to place Mr. Pederson at their head for a leader in the organization of the student body. A constitution, following more or less closely the constitution of previous years in Whitworth College, was drawn up and presented to the student body, and it was decided to post it for seven days on the bulletin board for inspection by the students. On the first day of October the student body again met, the constitution was adopted and a president and vice-president elected. The classes were instructed to nominate members for the Executive Board, and after these names had been posted for a week an election was held, and the Executive Board was made complete with the following officers:

G. Carl Weller.....	<i>President</i>
Russell F. Pederson.....	<i>Vice-President</i>
Helen M. Wait.....	<i>Secretary</i>
Murray Jones.....	<i>Treasurer</i>

Plans were immediately formulated to finance athletics as well as the Whitworthian, and when the campaign for funds was made, almost every student signed up for membership by pledging the required fee. Unfortunate as it may seem that such a small student body would naturally produce a small treasury, the college athletic fund was graciously appropriated and the two sources were able to handle nicely the financial end of football, basket ball, baseball, and tennis.

The new officers of the Student Association, which have recently been elected, will begin their work upon the opening day of school next September, and whatever the successes and failures of the present year have been, they will be able to lead the student body out and on to a better Student Association in the greater Whitworth College.

Student Self-Governing Associations

EARLY in the year, the students of the girls' dormitory organized themselves into a self-governing body and elected the following officers: Catherine Gunn, president; Isabel Stuart, vice-president; Lois Hanscom, secretary and treasurer; Elizabeth Dudley and Dorothy Bolling, monitors. At the mid-semester election, Helen Wait was chosen vice-president, and Grace Trinder and Margaret Miller, monitors.

The organization has proved itself satisfactory in every way. It has enabled the girls to have pleasant social times as well as experience in self-control and discipline. At no time has there been a case of discipline which the girls could not handle alone.

Monotony was relieved by initiating all new girls into the organization. Many ingenious suggestions were executed, ranging from blindfold feeding to a proposal. All the girls feel satisfied with their success at governing themselves.

The Men's Collegiate Student Self-Governing Association was organized by the residents of the third floor of the men's dormitory for the purpose of securing domestic tranquillity, of insuring social good times, and of doing everything with a true Christian spirit.

The officers are Russell F. Pederson, president; Walter Beaghan, vice president; Victor Vaughan, treasurer; Reamer Bohn, secretary; Murray Jones, monitor, and Harold Sherwin, chairman of refreshments.

Each member of the organization is proud to acknowledge his connection with the association and all are united in acclamation of success.

N A T S I H I

During the school year the residents of the second floor of the men's dormitory have been active both in student self-government and along social lines. The boys on this floor come from both college and preparatory departments.

The officers are Thomas J. Tully, president; William Baxter, vice-president; William Manning, secretary, and Henry Rose, monitor.

Frank McMahon, who was monitor for the greater part of the year, was greatly appreciated by all. He saw that the boys had a good time and that the respect for the government was held through the ordeal of the "Hot Hand."

The members of the Second Floor Student Self-Governing Association are well satisfied with the results of their effort to govern themselves.



Criterion

THE CRITERION LITERARY SOCIETY was reorganized under the direction of Dr. Willard H. Robinson and Miss Edna M. Robinson for the purpose of stimulating and encouraging literary interest. The following officers were elected:

Frank McMahon	<i>President</i>
Dorothy Farr	<i>Vice-President</i>
Frances Herron	<i>Secretary</i>
Marjorie Baldwin	<i>Treasurer</i>

When Frank McMahon was called home, Harold Sherwin was elected to take his place as president of the society. There have been many interesting programs. Special features like the famous world artists, the second act of *Rigoletto* and the *Lady of Shallot* floating in her barge down to Camelot, have met with enthusiastic appreciation. The society has proved itself a live, energetic and interesting organization and promises to be one of the vital factors in our school life.



NATSIHI

Y. W. C. A. and Y. M. C. A.

The Y. W. C. A. and the Y. M. C. A. have been and are to be the strong factors for Christian influence and service to others in Whitworth College. The officers for the Y. W. C. A. in 1920-21 are:

Miriam Cassill*President*
Dorothy Farr*Vice-President*
Beatrice Warner*Secretary*
Irene Ringhisen*Treasurer*

The officers for the Y. M. C. A. for the coming year are:

Douglas Scates*President*
Jesse Phillips*Vice-President*
Joseph Tewinkle*Secretary*
Harold Sherwin*Treasurer*

Each organization expects to have a good representation in their respective conferences at Seabeck this summer.

The aim of these conferences is to bring the various organizations of the Pacific Northwest in vital touch with the world's great problems, to inspire the students with the highest motives, and to promote a true fellowship between them.

Kappa Gamma

Colors: Royal Purple with Gold. *Flower:* Violet.

The oldest organization in Whitworth College is Kappa Gamma, founded in Tacoma in 1902 for literary and social purposes.

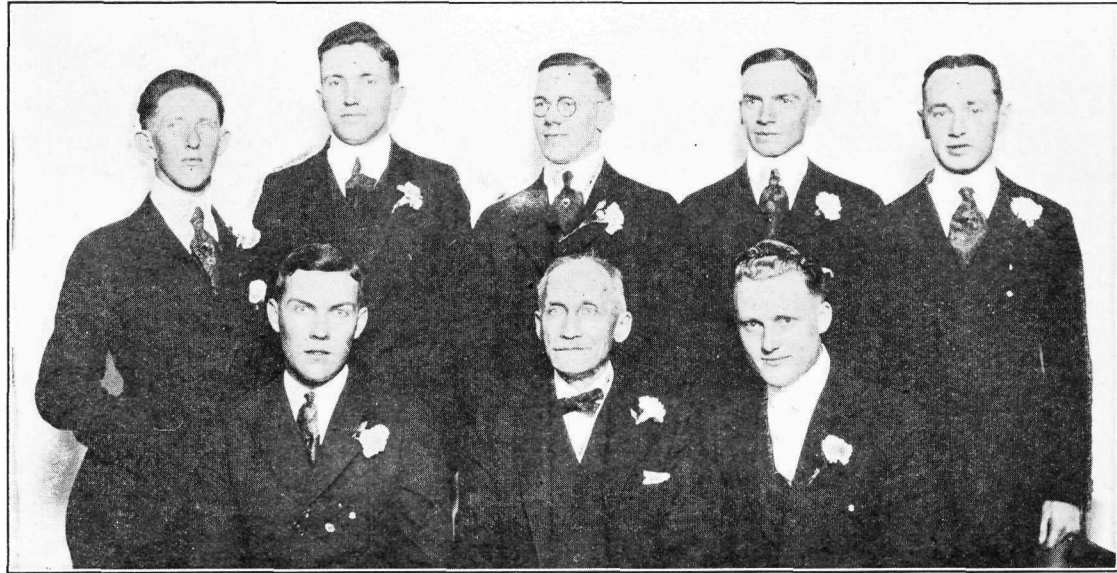
The beginning of the college year brought Catherine Gunn, Jennie Borgeson, and thirty active alumni members together again. Isabel Stuart, Anna Borgeson, Miriam Cassill, Alma Ringheim, and Dorothy Farr were formally pledged in February. On March 6th the new members were initiated, and in the evening twenty Kappa Gamma members banqueted in the East Room of the Davenport Hotel.

On May 22nd, the sorority gave its annual May Party in the College Hall which was harmoniously decorated in royal purple and gold, the Kappa Gamma colors. After the program, refreshments were served in the reception room.





NATSIHI



Beta Phi Epsilon

Frater in Facultate: Charles A. Barry

Dux: Murray Jones

Thomas Tully

Jesse Phillips

Douglas Scates

Reamer Bohn

Walter Beaughan

Harold Sherwin

When Whitworth College reopened last fall after a year's patriotic sacrifice to war ends, her loyal supporters heard again the call of the Whitworth spirit, urging them to seek fresh opportunities of helpfulness. In this spirit, the alumni of Beta Phi Epsilon early pledged new members to carry on their work. Later in the year their initiation was solemnized and the new members banqueted by the alumni.

Although none of the former members have been in Whitworth this year, the new boys have sought to follow the established ideals of the organization—working for the best interests of Whitworth, striving to maintain high personal standards, and endeavoring always to create and promote good-will and fellowship among the students. Although this year its obstacles have been many and hard, and Beta Phi Epsilon has not been able to realize all of its hopes, it looks to the future for a time of greater helpfulness to Whitworth.



Calendar

SEPTEMBER

MONDAY, 15th—Students begin to arrive with bewildered expressions.

TUESDAY, 16th—Registration .

WEDNESDAY, 17th—Students enter classes with looks of despair.

THURSDAY, 18th—Former students called to gloat over the new victims.

FRIDAY, 19th—President's reception for faculty and students.

SATURDAY, 20th—Wash day changed to Monday.

SUNDAY, 21st—Children conducted by the faculty to the First Church.

MONDAY, 22nd—Girls storm the city for wearing apparel.

TUESDAY, 23rd—Black and Corbally visit.

WEDNESDAY, 24th—Swiss Family Robinson Birthday Party.

THURSDAY, 25th—Tin Lizzie owned by Miss Davis breaks all speed records.

FRIDAY, 26th—Stag party.

SATURDAY, 27th—Students' Association organizes.

SUNDAY, 28th—Students break Sabbath by a trip to Wakiki.

MONDAY, 30th—Our only Junior returns.

TUESDAY, 30th—Boys burn the midnight oil.

N A T S I H I

OCTOBER

- WEDNESDAY, 1st—Wholesale massacre of bugs in the gym.
- THURSDAY, 2nd—Harold Robinson gives a pajama dance at 9:45 p. m., amid the cheers of a large audience.
- FRIDAY, 3rd—Coach Mullen starts the ball rolling for the girls.
- SATURDAY, 4th—Young men entertain young women. No fine clothes.
- SUNDAY, 5th—The president preaches at Central Methodist.
- MONDAY, 6th—Famous tennis champion arrives.
- TUESDAY, 7th—Girls begin basketball.
- WEDNESDAY, 8th—Students attend Presbytery and inflict musical(?) punishment upon the clergy.
- THURSDAY, 9th—Student body elects officers.
- FRIDAY, 10th—Tam party at Beaches. First executive board meeting. First uprising in boys' dorm.
- SATURDAY, 11th—Practice game with L. & C. High School.
- SUNDAY, 12th—Dr. Robinson entertains at a girls' pink tea.
- MONDAY, 13th—Everybody slept till noon.
- TUESDAY, 14th—Joe Tewinkel brings his doll to school.
- WEDNESDAY, 15th—Glee Club organized. Campus deserted.
- THURSDAY, 16th—Evil is upon us. Carlson is here!
- FRIDAY, 17th—Second birthday spread.
- SATURDAY, 18th—Football team attends W. S. C.-Multnomah game.
- SUNDAY, 19th—All on best behavior—company for dinner.
- MONDAY, 20th—After-dinner speech by president's wife.
- TUESDAY, 21st—Rehearsals furnish an escape from Freshman English.
- WEDNESDAY, 22nd—First fall of stage curtain and of snow.
- THURSDAY, 23rd—Dr. Allen of Persia speaks in chapel. Shakespearean program.
- FRIDAY, 24th—Celebrate football victory over Spokane U.
- SATURDAY, 25th—Clocks turn back one hour. Oh! you beauty sleep.

N A T S I H I

SUNDAY, 26th—Dr. Robinson preaches at Knox Church.
MONDAY, 27th—Pederson and Beaughan return from Moscow and enlighten the students in chapel.
TUESDAY, 28th—Freshman English try to feel like a million dollars.
WEDNESDAY, 29th—The organ rehearsal in First Church.
THURSDAY, 30th—Dr. Darling confers with girls.
FRIDAY, 31st—Hallowe'en Party. The ghost walks.

NOVEMBER

SATURDAY, 1st—Football star hurt at Sandpoint.
SUNDAY, 2nd—What became of the extra pineapple?
MONDAY, 3rd—Snow and rain move us to story telling.
TUESDAY, 4th—Students draw up a second *Magna Carta* for self-government.
WEDNESDAY, 5th—D. S. girls flirt with the elevators in the flour mill.
THURSDAY, 6th—Law laid down in chapel.
FRIDAY, 7th—Students take walk to settle dinner.
SATURDAY, 8th—Jesse, the battle-scarred hero, returns.
SUNDAY, 9th—It never rains but it pours.
MONDAY, 10th—Deserted dorms.
TUESDAY, 11th—Students in town, Armistice Day.
WEDNESDAY, 12th—Oral Chemistry quiz. Appearances are deceiving.
THURSDAY, 13th—The snow falls at the Executive Board meeting.
FRIDAY, 14th—Students' Association adopts by-laws.
SATURDAY, 15th—No second helpings of ice-cream at birthday dinner.
SUNDAY, 16th—Hike to Glen Tana.
MONDAY, 17th—Manring appears at breakfast minus his sideburns.
TUESDAY, 18th—Ruth Laughbon gets black eye.

N A T S I H I

WEDNESDAY, 19th—Tea(?) in Christina's room.

THURSDAY, 20th—Dr. Robinson lectures on Mt. Sinai.

FRIDAY, 21st—Thanksgiving program. Turkey.

SATURDAY, 22nd—Catherine Gunn entertains at tea.

SUNDAY, 23rd—Students pose on campus for admiring passers-by.

MONDAY, 24th—A trip to town in spite of high prices.

TUESDAY, 25th—Students endeavor to sing at a Christian Endeavor supper in First Presbyterian Church.

WEDNESDAY, 26th—Turkey sacrificed to gluttony.

THURSDAY, 27th—Attend Westminster Congregational Thanksgiving service.

FRIDAY, 28th—It's nice to get up in the morning, but it's nicer to stay in bed.

SATURDAY, 29th—Snowball fight on campus.

SUNDAY, 30th—Bus refuses to go to church.

DECEMBER

MONDAY, 1st—Dr. Robinson starts in opposition to the bus.

TUESDAY, 2nd—Chemistry laboratory becomes more confusing than ever.

WEDNESDAY, 3rd—Skating at Cook's Lake. Pride goeth before a fall.

THURSDAY, 4th—Daisy Chase Russell, visiting here for a few hours, revived memories to carry with her to Cairo, Egypt.

FRIDAY, 5th—Major Swan speaks in chapel. I swan!

SATURDAY, 6th—Big feed (t) in both dorms.

SUNDAY, 7th—A late breakfast.

MONDAY, 8th—Midnight correction school organized by boys.

TUESDAY, 9th—Rev. Middlemass leads chapel "Thinking Red."

WEDNESDAY, 10th—Girls get out the wrong side of bed.

NATSIHI

THURSDAY, 11th—Students renew their youth by visiting the Whitworth school.

FRIDAY, 12th—Christmas party in chapel.

SATURDAY, 13th—Meeting under mistletoe, in chapel.

SUNDAY, 14th—Cold! both kinds.

MONDAY, 15th—Students stuck in a snow drift.

TUESDAY, 16th—Miriam flirts with street-car conductor.

WEDNESDAY, 17th—President's sermon on "End of World" results in wreck of bus.

THURSDAY, 18th—Musical. Lyceum program.

FRIDAY, 19th—Students return home for a rollicking good time.

SATURDAY, DECEMBER 20th, 1919, to MONDAY, JANUARY 5th, 1920—Tully has a hot time keeping from freezing to death.

JANUARY

TUESDAY, 6th—Students return with weary appearances.

WEDNESDAY, 7th—Rose and Mildred united.

THURSDAY, 8th—Pederson finds an icicle.

FRIDAY, 9th—Tragedy at Spokane U in basketball game.

SATURDAY, 10th—Montana and Grace silent for once.

SUNDAY, 11th—Another reunion at First Presbyterian Church.

MONDAY, 12th—Lois becomes a clown.

TUESDAY, 13th—Report on Des Moines convention.

WEDNESDAY, 14th—Ice-cream to cool off after basketball game.

THURSDAY, 15th—Grace serenades the boys and makes proposal.

FRIDAY, 16th—Proposal accepted.

SATURDAY, 17th—Girls spread themselves.

N A T S I H I

SUNDAY, 18th—Still waters run deep!
MONDAY, 19th—Fourth year Prep and a Senior play Tiddledy-Winks.
TUESDAY, 20th—Trustees to lunch.
WEDNESDAY, 21st—Six girls balance Mrs. Darling on bike.
THURSDAY, 22nd—Everybody crams for exams.
FRIDAY, 23rd—Rotten egg shampoo for Lester Campbell.
SATURDAY, 24th—Lights conveniently go off at nine.
SUNDAY, 25th—Slumber and snores prevail.
MONDAY, 26th—Arrival of school coquette.
TUESDAY, 27th—Oh! the torture of exams.
WEDNESDAY, 28th—Too weak to speak.
THURSDAY, 29th—Are we downhearted? No!
FRIDAY, 30th—Colds! Handkerchief brigade organized.
SATURDAY, 31st—Miss Logan “flu” away.

FEBRUARY

SUNDAY, 1st—Home, Sweet Home.
MONDAY, 2nd—Bus strains its seating powers.
TUESDAY, 3rd—Ten dollars to re-sign our names.
WEDNESDAY, 4th—Three girls wear hats to hide their hair.
THURSDAY, 5th—Literary Society organized.
FRIDAY, 6th—Glee Club sings at North Monroe Church.
SATURDAY, 7th—Heavyweight initiated to basketball.
SUNDAY, 8th—Still enjoying the simple life.
MONDAY, 9th—Long friend of Dr. Robinson speaks in chapel.

N A T S I H I

TUESDAY, 10th—Mrs. Allen of Persia speaks in chapel.
WEDNESDAY, 11th. The Spaniards get together.
THURSDAY, 12th—Cupid makes preparations.
FRIDAY, 13th—Tokens of love through the mail.
SATURDAY, 14th—Tully makes a lovely bride.
SUNDAY, 15th—Isolated invalids progressing.
MONDAY, 16th—Ghostly music fills the midnight air.
TUESDAY, 17th—Psychologist convinces us that our intelligence is limited.
WEDNESDAY, 18th—Mixed speech on gym, breakfast, and chapel.
THURSDAY, 19th—Cowbell calls us to classes.
FRIDAY, 20th—Flu patients inhale fresh air.
SATURDAY, 21st—Bridget leaves in disgust. We go abroad with the Robinsons.
SUNDAY, 22nd—Missionary needs in China presented.
MONDAY, 23rd—Whitworth school children's enthusiasm fired by C. Gunn.
TUESDAY, 24th—D. S. girls gave a (weak) tea.
WEDNESDAY, 25th—Grand opera in Literary.
THURSDAY, 26th—Flowery oratory at birthday dinner.
FRIDAY, 27th—Pupils of Miss Eddy give program.
SATURDAY, 28th—In springtime our thoughts turn to love.
SUNDAY, 29th—Helen Beach's appendix cut out when it cuts up.

MARCH

MONDAY, 1st—Preparatory Department began their fight against the Freshmen.
TUESDAY, 2nd—Freshmen (bound) to do their duty.
WEDNESDAY, 3rd—We learn that the Armenians are as hungry as we are.

N A T S I H I

THURSDAY, 4th—Children play in Literary Society.

FRIDAY, 5th—Mr. A. L. White entertains the students with moving pictures.

SATURDAY, 6th—R. F. P. improves training table manners by eating with a knife.

SUNDAY, 7th—Quiet walk to Waikiki.

MONDAY, 8th—Call for volunteers for tennis court.

TUESDAY, 9th—Whitworthian had a coming out.

WEDNESDAY, 10th—Faculty takes to drinking in the D. S. room.

THURSDAY, 11th—College students hear a lecture on healing.

FRIDAY, 12th—Student from Chop-Stick Land arrives.

SATURDAY, 13th—Students make a “show” of themselves in the evening.

SUNDAY, 14th—Mrs. Beatie leads vespers in absence of President.

MONDAY, 15th—Girls enjoy (?) a physical exam.

TUESDAY, 16th—Town students, on St. Patrick's, entertain the dorm residents with Irish program, baked spuds (plenty of butter), and punch.

WEDNESDAY, 17th—Wearing of the green. Whitworth did not know that she was educating so many Irishmen.

THURSDAY, 18th—Many fortunes in Irene's room.

FRIDAY, 19th—Miss Robinson has a heated argument on Burns.

SATURDAY, 20th—The girls enjoy a midnight spread.

SUNDAY, 21st—Rev. Mitchell speaks in vespers.

MONDAY, 22nd—Students make a “mash” on potatoes.

TUESDAY, 23rd—Indian war dance in girls' dorm. Upperclassmen to Deer Park.

WEDNESDAY, 24th—The Seniors are coming! Hurrah!

THURSDAY, 25th—The wives of the trustees are entertained at tea. Happiest birthday party of the year was enjoyed by all.

FRIDAY, 26th—Whitworth prize baby weighs 160 pounds.

SATURDAY, 27th—Checkers substituted for flinch.

SUNDAY, 28th—Girls “remain in the dark” rather than go to chapel.

N A T S I H I

MONDAY, 29th—All hands to the plow on the baseball field.

TUESDAY, 30th—The Darling Ford has tire troubles.

WEDNESDAY, 31st—World-famed musicians perform in Literary Society. Eight of Whitworth's most talented prove themselves.

APRIL

THURSDAY, 1st—No fool like an old fool. The people late to St. Pat's party have the opportunity to get their pictures taken by going to April Fool's party. Dormitory April Fool's party.

FRIDAY, 2nd—Vacation! Oh! Liberty, how sweet thou art!

SATURDAY, 3rd—Kappa Gamma girls cook their own beefsteak.

SUNDAY, 4th—Impromptu Christian Endeavor.

MONDAY, 5th—President fined for speeding. Fine!

TUESDAY, 6th—Did you have a good time?

WEDNESDAY, 7th—Grace munches a three-inch sandwich.

THURSDAY, 8th—Dr. Robinson has two "blowouts" in half an hour.

FRIDAY, 9th—A measly crowd.

SATURDAY, 10th—Oh Fudge!!

SUNDAY, 11th—Small pox! No visitors allowed.

MONDAY, 12th—False alarm.

TUESDAY, 13th—"Thou art our pride, thou art our dream, Though often we may wayward seem."

WEDNESDAY, 14th—Chronic spring-fever. An epidemic at Whitworth.

THURSDAY, 15th—The April birthday party.

FRIDAY, 16th—Let's go, Whitworth! Spokane U. vs. Whitworth.

SATURDAY, 17th—Accidents will happen in the best of regulated families. Poor Joe!

NATSIHI

SUNDAY, 18th—A Potter moulds our morals at vespers.

MONDAY, 19th—Ball field put into condition.

TUESDAY, 20th—Soap-box orators in evidence.

WEDNESDAY, 21st—Big explosion in boys' dorm. The smoke blew up the chimney.

THURSDAY, 22nd—Girls sing "Peeking Through the Knothole in Mother's Wooden Leg."

FRIDAY, 23rd—Spokane College vs. Whitworth. A wienie roast on the Beaches.

SATURDAY, 24th—All's well that ends well.

SUNDAY, 25th—Margaret Miller is quietly presented with a deaf and dumb piano.

MONDAY, 26th—A clean sweep?

TUESDAY, 27th—Libby Art Studio camera broken.

WEDNESDAY, 28th—Tully presents "The White Hope."

THURSDAY, 29th—Unexpected holiday for students.

FRIDAY, 30th—We are all well and happy.

MAY

SATURDAY, 1st—Mr. Barry, as acting-president, leads chapel.

SUNDAY, 2nd—We go to see Dr. Robinson and the Holy Land on the bus.

MONDAY, 3rd—Everybody to town to see if Spokane is still on the map.

TUESDAY, 4th—On the last lap of the school year.

WEDNESDAY, 5th—Whitworth public school pays us a visit. The campus dotted with future Whitworthians.

THURSDAY, 6th—President and Mrs. Barry are honor guests at our birthday dinner.

FRIDAY, 7th—Irene sleeps on the fire escape.

SATURDAY, 8th—Thrills at the "Nat."

SUNDAY, 9th—The walking is fine. It always rains when the bus refuses to run.

NATSIHI

- MONDAY, 10th—Student Volunteer Movement message by Mr. Wilson.
- TUESDAY, 11th—Beta Phi Epsilon entertains Kappa Gamma.
- WEDNESDAY, 12th—Dr. Robinson (s) slides on Alaska.
- THURSDAY, 13th—Give up all hope for the “recovery” of Jones. No bachelors left for the “Bachelors’ Club.”
- FRIDAY, 14th—Ain’t it a grand and glorious feeling?
- SATURDAY, 15th—The same old thing in the same old way.
- SUNDAY, 16th—The perfect day.
- MONDAY, 17th—Plenty of dust at Whitworth but none at Loon Lake.
- TUESDAY, 18th—Load of coal arrived for the girls’ dormitory.
- WEDNESDAY, 19th—Kid party. O you kid!
- THURSDAY, 20th—Love is just two fool things after each other.
- FRIDAY, 21st—Juniors entertain Seniors at President Barry’s home.
- SATURDAY, 22nd—Butterflies fly and wisteria blooms at Kappa Gamma May Party in College Hall.
- SUNDAY, 23rd—Students hear White Elk.
- MONDAY, 24th—The croquet ball keeps rolling.
- TUESDAY, 25th—Tewinkel’s credit exhausted.
- WEDNESDAY, 26th—Let us all unite and sing.
- THURSDAY, 27th—Exams. O! Why didn’t I study?
- FRIDAY, 28th—General open dorm. Graduating Prep Party.
- SATURDAY, 29th—Community Center Meeting from 4 to 8 p. m. Reception for Graduating Prep Class at home of Professor James H. Beach.
- SUNDAY, 30th—Baccalaureate address by Rev. David W. Ferry of Davenport, at 3 p. m. in the College Chapel.
- MONDAY, 31st—Lawn party at home of Mr. and Mrs. A. L. White for all the students and faculty from 3 to 6 p. m.

JUNE

TUESDAY, 1st—Reception to the Senior Class at the home of President Barry, 1028 W. 13th Avenue.

WEDNESDAY, 2nd—Oratorical Prize Contest between Sophomores and Freshmen. Prize granted by Capt. W. R. Ballard of Seattle. Department of Music assists in the program.

THURSDAY, 3rd—Graduating Preps' Class Play.

FRIDAY, 4th— 9:30 a. m. Meeting of Board of Trustees at the College.

10:30 p. m. Commencement Exercises in College Hall. Address by Dr. Thomas H. Harper.

8:30 p. m. Alumni Banquet at Davenports'.



O Teach Me, Life

Teach me how to feel another's pain,
Let me learn a kindness for the morrow,
Tell me how to love another's gain.
Teach me how to guide another onward
Through the rain and midst of weary years,
Keep my hands forever pure and stainless
That I may brush away another's tears.

Oh teach me, Life, the happiness of living,
Tear the selfish greed from out my heart,
Let me do my share of kindly helping,
I do not wish to play a minor part.
Teach me, tell me, how to love another,
Place a grand compassion in my breast,
Let my voice be soft and low and tender,
That all who hear may feel a sense of rest.

—Anon.

TABLE OF CONTENTS

	<i>Page</i>		
Title Page	1	Graduating Preps	20
Foreword	2	First, Second and Third Year Preps.....	22
Dedication	3	Social Events	23
Journal Staff	4	Athletics	24
Faculty Title Page.....	5	Lyceum Course	27
Faculty Write-Up	6	Organizations	28
Senior Title Page.....	9	Student Association	29
Seniors	10	Self-Governing Associations	30
Junior Class	15	Criterion Literary Society.....	32
Sophomores	16	Y. W. and Y. M.....	33
Snaps	17	Kappa Gamma	34
Frosh	18	Beta Phi Epsilon.....	36
		Calendar	38

NATSIHI

ADVERTISING SECTION

THE NATSIHI Staff take this opportunity to thank the advertisers who have, through their generous patronage, assisted in making this issue a success. ☺

The Antlers

AT 512 RIVERSIDE - SPOKANE

Have a very attractive store chuck full of good things to eat and drink

¶ The fountain menu shows many seductive Sundaes. Next time you are in town go in there.

Tull & Gibbs

(INC.)

*Spokane's Greatest
Home Furnishing Store*

Your Credit Is Good

WE ARE DISTRIBUTORS FOR
A. G. Spalding & Sons

ATHLETIC GOODS

*Tennis
Base Ball
Foot Ball*



*All Indoor
and Outdoor
Sports*

Ware Bros. Co.

125 Howard St.

SEND FOR CATALOGUE

609 Main

FOR MEN—
Over One Hundred Styles

SHOES and OXFORDS --- All
leathers, all styles and all sizes
from AA to EE widths.

We have your kind and size at a LOW OVER-
HEAD saving from \$3.00 to \$5.00 per pair.

Eggerts

Famous Shoes for Men

FORMERLY EASTERN SHOE REPAIR FACTORY
10 SOUTH HOWARD STREET

Hart Schaffner & Marx
Clothes Shop

**GOLDSMITH
GUARANTEED**



**BASE BALL AND
TENNIS SUPPLIES**



"FIRST ← BECAUSE THEY → LAST"

OUR NEW LOCATION: 706 Main Avenue
Spokane Hardware Co.

**Whitworth College
STORE**

"Our Store Has It"

*Stationery
Text Books*

*Kodak Supplies
Toilet Articles*

W E A R

Hat Box Hats and
Caps

6 - N. Howard St. - 6

HATS FOR ALL

YOU CAN RENT OR BUY OF US . . .

J Full Dress Suits, Tuxedos, Theatre
Costumes, Wigs and Make-ups,
College Gowns, etc.

MILLER - DERVANT

AUDITORIUM BUILDING

Phone Main 642

: :

205 N. Post Street

NATSIHI

It Pays to Pay Cash at
MARR'S
Eleven Stores

Libby Art Studio

816 1-2 RIVERSIDE AVE. : OPPOSITE CASINO THEATRE

Photographs
of Quality

¶ We thank the students of Whitworth College
for their patronage.

LET US HELP YOU SOLVE THE PROBLEM---

How to Make Your Income Reach Farthest

Young Men's Suits
in new models, well tailored, at prices
much UNDER UPTOWN STORES.

Men's Outfitters
AT MONEY-SAVING PRICES

WE ARE IMPORTERS OF IRISH LINEN

Mower & Flynnne

RIVERSIDE AND MONROE ST. - SPOKANE

College Men's Heads



Should be distinguished by the Gray Matter within and the Appearance without. Without the latter, the former is not noticeable. If your hair is "barbed" at 615 Sprague you will have both. Try them.

LUTHER

THE BARBER

615 Sprague Ave. Between Howard and Wall

Wall Street Lumber & Fuel Co.

IRA OWEN, Manager

Lumber, Fuel, Gasoline,
Oils and Tires



PHONE:
Glen. 55

Yards and Bunkers N. 5524 Wall
SPOKANE, WASHINGTON

Estimates Furnished
Repairing Properly Done

R. M. LEWIS
W. M. LUCAS

Lewis & Lucas

Plumbing and Heating Co.

Phone Main 900

619 First Avenue
Spokane, Wash.

THE fellow who remarked: "I would rather fish than eat," forgot to add that it was Graham's tackle he was using.

No doubt he bought any number of the following items from us:

A split bamboo trunk rod, four pieces with an extra tip, nickel plated mountings, improved ferrules with silk wound snake guides wound at intervals in scarlet and green; price **\$3.50**

An Alki enameled fly line; Colors, black and white, in a flexible but hard braid; 12 pounds test; 25 yards for **75c**

Treble hooks with Colorado spinners and Wilson bait **25c**

Haywood western made trout flies at, per dozen **\$2.00**

And any amount of other things that trout and bass will bite on.

A 10-inch bow landing net **\$1.10**

John W. Graham & Co.

Folding Water Buckets **\$3.00**

707-711 Sprague The Out o' Doors Store for Men, Women & Children 708-712 First

The Doerr-Mitchell Electric Co.

MAKERS OF

LIGHTING FIXTURES

JOBBER'S OF ALL KINDS OF ELECTRIC SUPPLIES

ENGINEERS AND CONTRACTORS

118 LINCOLN STREET, OPPOSITE POST OFFICE
TELEPHONE MAIN 5460 SPOKANE, WASH.

SPOKANE'S CASH STORE

FOR ALL THE PEOPLE

☞ Ample stocks of stylish clothing and furnishings that satisfy the requirements of exacting young people.

☞ You will find we are always early with the latest at a price you can afford to pay.

The Palace
CORNER MAIN AVE. AND POST ST.

Hoxsey - Lambert Co.
Sporting Goods

607 SPRAGUE

NOTHING BUT THE BEST

Spokane Drug Co.

Wholesale Drugs

N. 707-709 Railroad Ave. - Tel. Riv. 38

Hazelwood Dairy

FOR over thirty years it has been the ambition of the Hazelwood Company to keep the standard of its dairy products at the top.

HAZELWOOD CO.

SPOKANE, WN.

SUITS PRESSED

35c *WHILE YOU WAIT*

C. MYERS

CORNER . RIVERSIDE . AND . HOWARD

MABEL HENRY
SOPORANO

VOICE PLACEMENT
CONCERT
OPATORIO
RECITAL


STUDIO:
407 EILERS BLDG.
PHONE MAIN 1951

'Eat the TRIANGLE INN way'

Students and friends of Whitworth College will always find a royal welcome with us. The quiet refined surroundings, the appetizing food appeals to both men and women alike.

THE TRIANGLE INN
of the Y. M. C. A.
SPOKANE, WASH.

L. M. VARNEY

 *Makes Shirts, Baseball
Uniforms and Pennants*

S. 208-208½ Howard St. : Spokane, Wash.
Phone Riverside 1710

JOYNER'S ORIGINAL

Cut-Rate Drug Stores

Best quality - Lowest prices.
Drugs, Stationery, Sundries, Cameras and
Kodak Supplies, Developing, Printing and
Enlarging.

THREE STORES :: SPOKANE

NATSIHI

“Better Let Hill Print It”

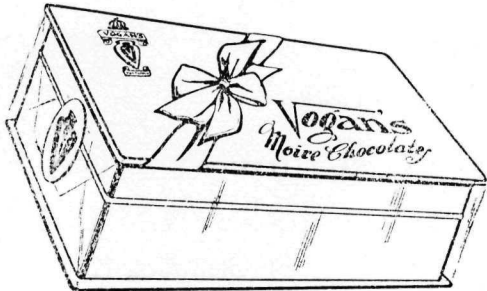
J This slogan applies to anything from wedding announcements to college annuals. ☞



210-214 S. HOWARD : RIVERSIDE 279

After Graduation
Continue to give her

Vogan's
CHOCOLATES



AT YOUR DEALER'S

Vogan Candy Co. 615 W. First Ave.
SPOKANE, W.N.

The IMPERIAL TRADING CO.

CORNER OF SECOND AVE. AND HOWARD ST.

The Place to Save Money

J We sell in dozen or case lots of
CANNED GOODS

\$20 orders delivered.

Fresh Fruits & Vegetables

Always on Hand

Phone or Call for Prices

PHONE RIVERSIDE 671

NATSIHI

WHITWORTH COLLEGE

OPENS SEPTEMBER 21st

Four year Regular College Courses.
Two year Preparatory Courses.

¶ Registrations may be made during the summer at any time. ¶ Arrangements can be made for conference at the homes of the applicants.



¶ NEW CATALOG, JUST OUT, SENT ON REQUEST.

Address:

Whitworth College
SPOKANE, WASHINGTON

Glenwood 417

or the City Office during the Summer:

126 NORTH WALL STREET

PHONE: MAIN 827

NATSIHI

ROWLAND KING, VICE-PRES.

N. C. FASSETT, PRESIDENT

CHAS. MAILHOT, SECY.-TREAS.

The C. M. Fassett Co.

(INCORPORATED)

Laboratory Supplies

FOR ASSAYERS, CHEMISTS, PHYSICIANS, MINES, SMELTERS AND SCHOOLS

209 WALL ST.

SPOKANE, WASH.

Leaders . in . Band . and
Orchestral . Instruments



Pacific Music Co.

818 SPRAGUE

For JEWELRY of
Absolute Reliability,

SEE

Sartori & Wolff

Makers of Fine Jewelry

10 Wall St.

Is Vacation Time going to find you ready with plenty of beautiful new clothes?

CLOTHES certainly have a lot to do with one's state of mind—that's why people who really intend to enjoy themselves never think of departing on a vacation without first choosing appropriate clothes. In almost as little time as it takes to tell it you can select from our displays all the apparel you'll need. And what is more, you may have each and every garment as distinctive and stylish as you want it. It's really surprising how much desirable ready-to-wear you may select here without making serious inroads on your purse.

Spokane **Kemp & Hebert** Wash.

