

1-1-1940

## Greater Chicago Souvenir Folder

Follow this and additional works at: [http://digitalcommons.whitworth.edu/travel\\_books](http://digitalcommons.whitworth.edu/travel_books)

---

### Recommended Citation

"Greater Chicago Souvenir Folder" Whitworth University (1940). *Travel Books*. Paper 4.  
[http://digitalcommons.whitworth.edu/travel\\_books/4](http://digitalcommons.whitworth.edu/travel_books/4)

This Book is brought to you for free and open access by the Amrhein Collection at Whitworth University. It has been accepted for inclusion in Travel Books by an authorized administrator of Whitworth University.

GREATER

CHICAGO

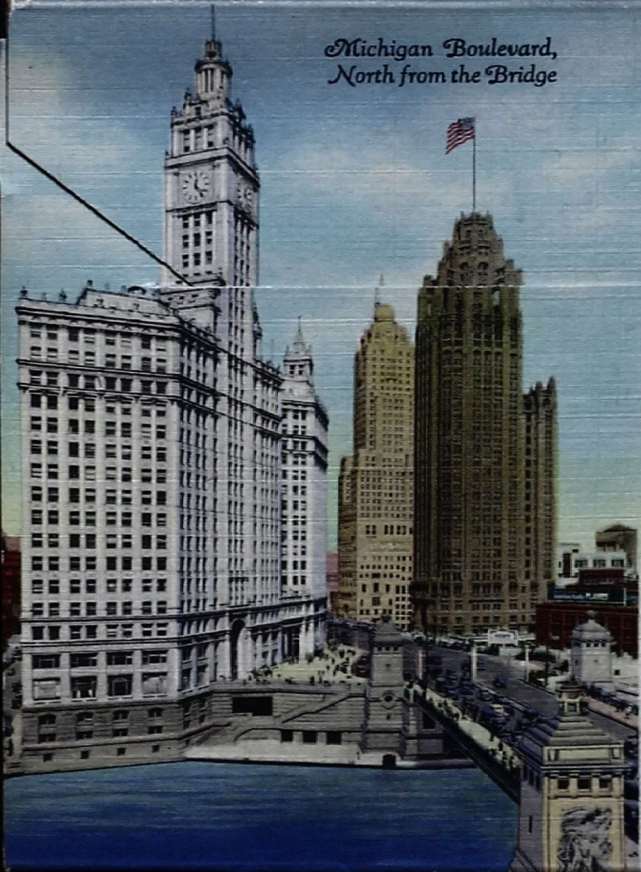
POSTAGE

1½¢

WITHOUT

MESSAGE

*Michigan Boulevard,  
North from the Bridge*

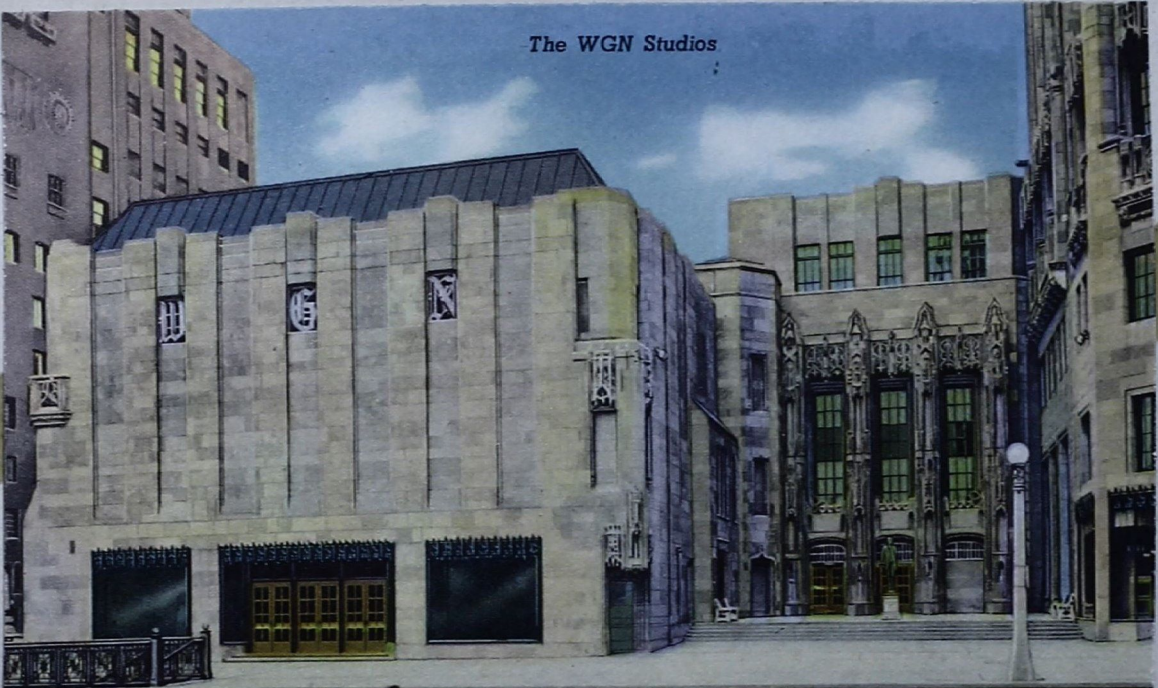


*Michigan Avenue and Wacker Drive,  
South from the Bridge*





The WGN Studios



© CURT TEICH & CO., INC.

Union Stock Yards



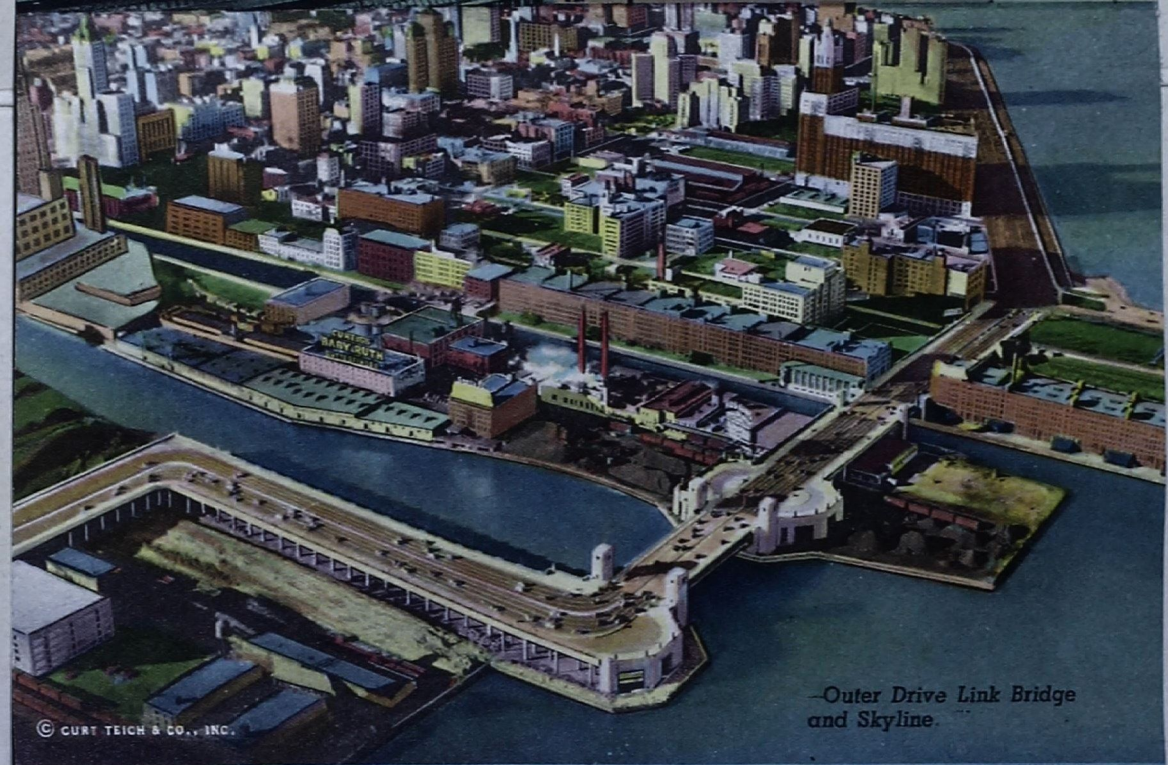
© CURT TEICH & CO., INC.

New Post Office



© CURT TEICH & CO., INC.

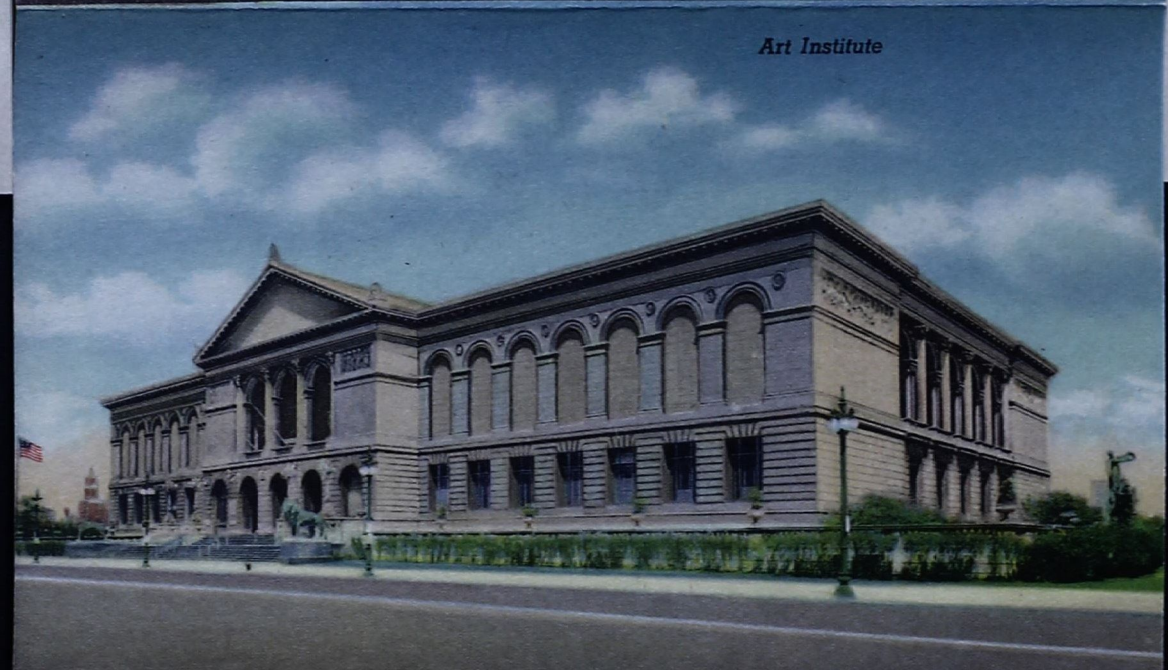




Outer Drive Link Bridge  
and Skyline.

© CURT TEICH & CO., INC.

Art Institute



© CURT TEICH & CO., INC.

Marshall Field & Co.  
Retail Store



© CURT TEICH & CO., INC.





© CURT TEICH & CO., INC.

Public Library



KAUFMANN FÄBRY PHOTO

The Chicago Stadium,  
Madison, Wood, Warren and  
Wolcott Streets



© CURT TEICH & CO., INC.



City Hall and  
County Building



© CURT TEICH & CO., INC.

Buckingham Fountain by Night, Grant Park, Chicago



© CURT TEICH & CO., INC.

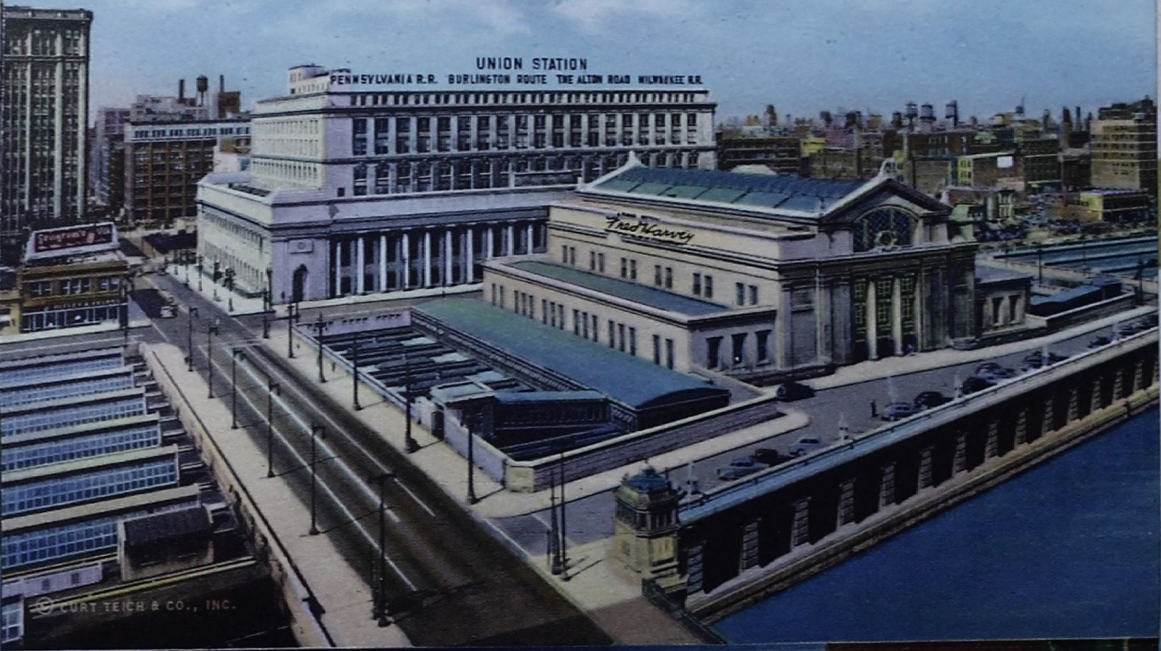


Chicago, City of Towers

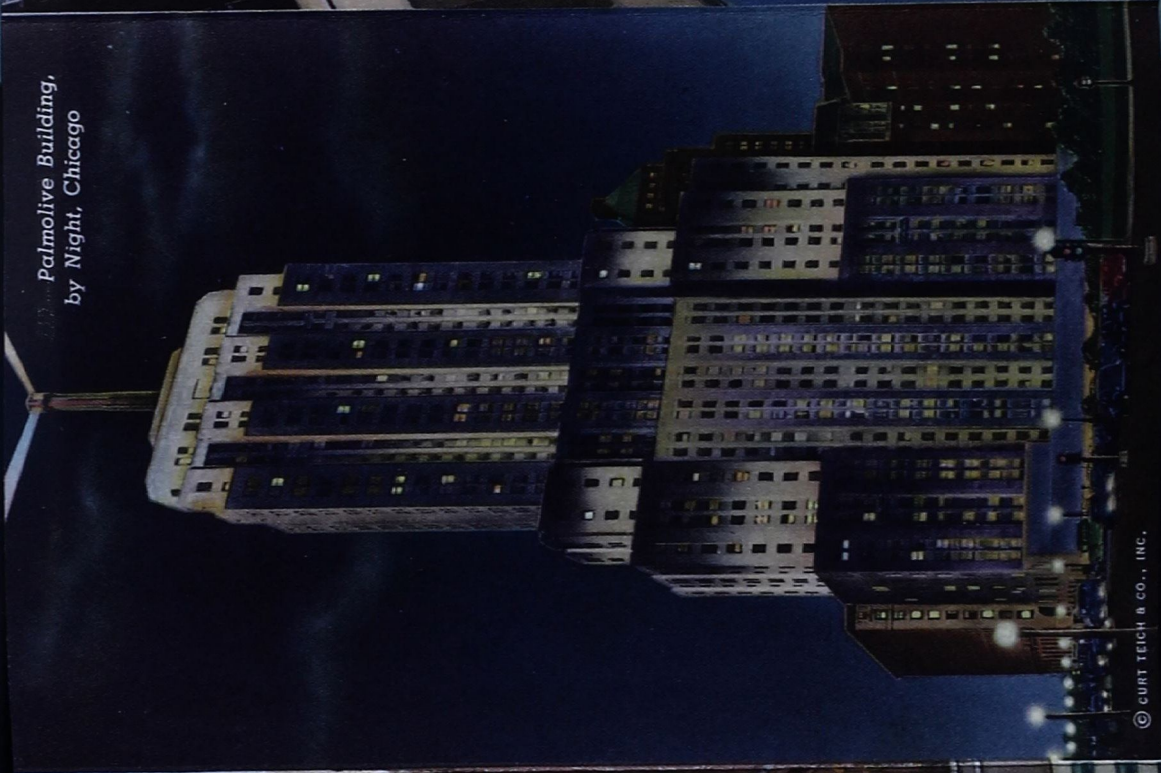
© CURT TEICH & CO., INC.



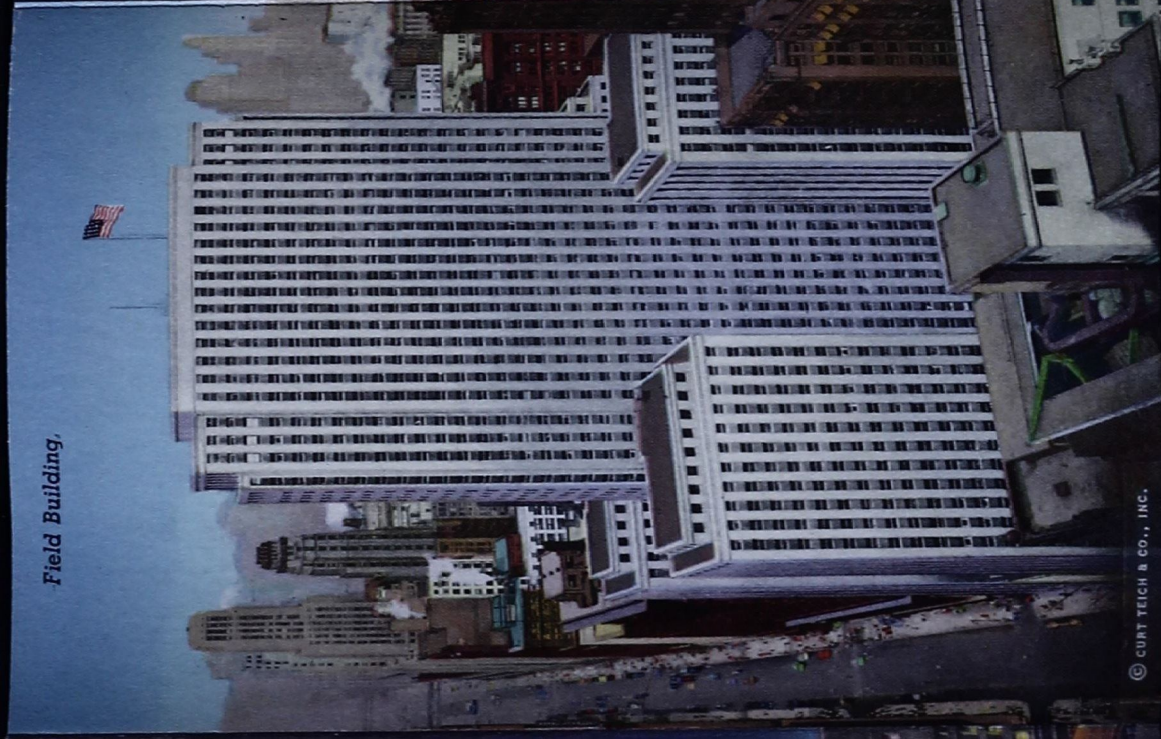
Union Station.



Palmlive Building,  
by Night, Chicago



Field Building,



© CURT TEICH & CO., INC.

© CURT TEICH & CO., INC.



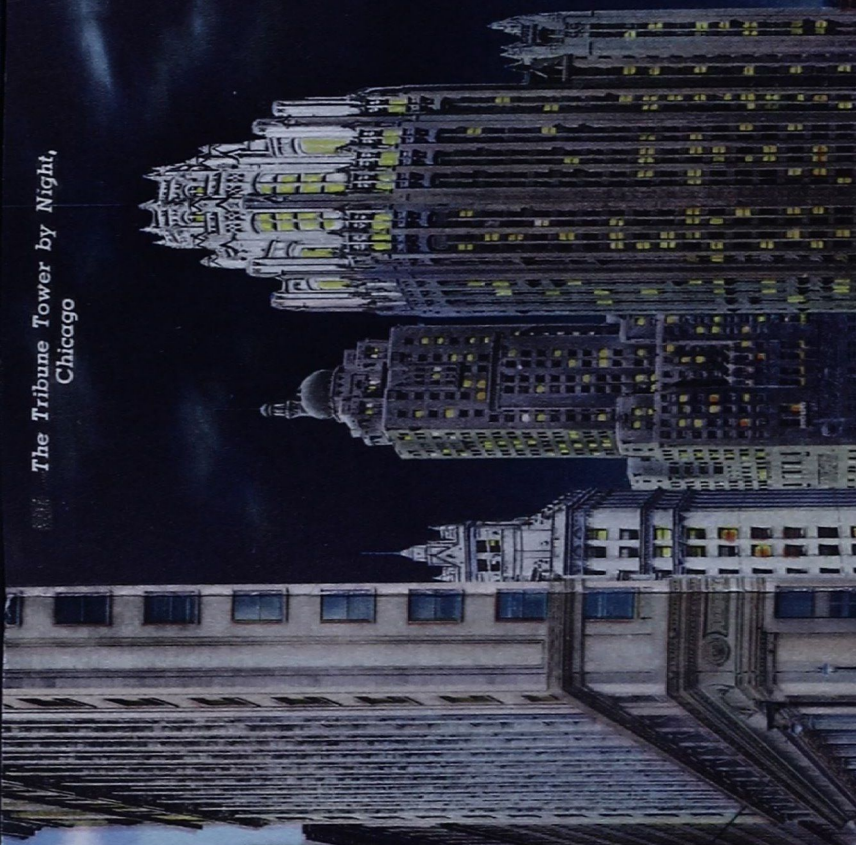
Wrigley Buildings and River by Night,  
Chicago



Looking Down  
La Salle Street, Chicago,  
Chicago Board of Trade  
in Background



The Tribune Tower by Night,  
Chicago





# ★ CHICAGO ★

**C**HICAGO, a great central market, city of industries, and financial metropolis of the Middle West, is known as a city of great institutions of learning and culture, of civic enterprises, which make for worth while achievements, quite as much as a city whose accomplishments primarily are commercial.

Chicago's parks and pleasure grounds, including the small parks, which give to scores of congested localities, opportunities for out-door recreation, are some of the finest in America.

Chicago's universities and colleges enroll nearly 50,000 students, and the investment in public welfare which these great institutions represent, is in excess of \$50,000,000. There are 470,000 pupils in the public schools and the city employs 13,059 teachers to instruct them.

~~Chicago's market is the world. There is no country however remote from civilization, wherein Chicago products are not known and used.~~

Chicago's industrial fame was first created by the development of the packing industry. While packing still leads in the comparative value of its products, the \$2,500,000,000 annual out-put of Chicago's factories, represents practically every article of commerce.

Chicago is the railroad center of the world. Its thirty-six railroads comprise more than one-third the railway mileage of the country. Thirty-six thousand freight cars are handled daily in Chicago's terminals. Two thousand through merchandise cars leave Chicago daily for 800 break-bulk points in 48 states, and serving hundreds of additional towns without transfer.

Chicago is the grain market of the world, and despite the cutting of forests in neighboring states, continues to be the lumber market of the world. It is the central distribution point of the United States in every line, and its wholesale business, greater even than its industrial strength, represents approximately another \$3,269,729,000 a year.

A hundred years ago Chicago was a country town. Today it is the world's fourth city. Its record of growth and development is one that no other community has equalled.