

1914

# Natsihi Yearbook 1914

Whitworth University

Follow this and additional works at: <http://digitalcommons.whitworth.edu/yearbooks>

---

## Recommended Citation

Whitworth University, "Natsihi Yearbook 1914" Whitworth University (1914). *Natsihi Yearbook*. Paper 2.  
<http://digitalcommons.whitworth.edu/yearbooks/2>

This text is brought to you for free and open access by the University Archives at Whitworth University. It has been accepted for inclusion in Natsihi Yearbook by an authorized administrator of Whitworth University.



WHITWORTH  
HERITAGE  
COLLECTION

LB  
3621.67  
.W5  
1914

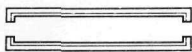
WHITWORTH COLLEGE

Whitworth College Library



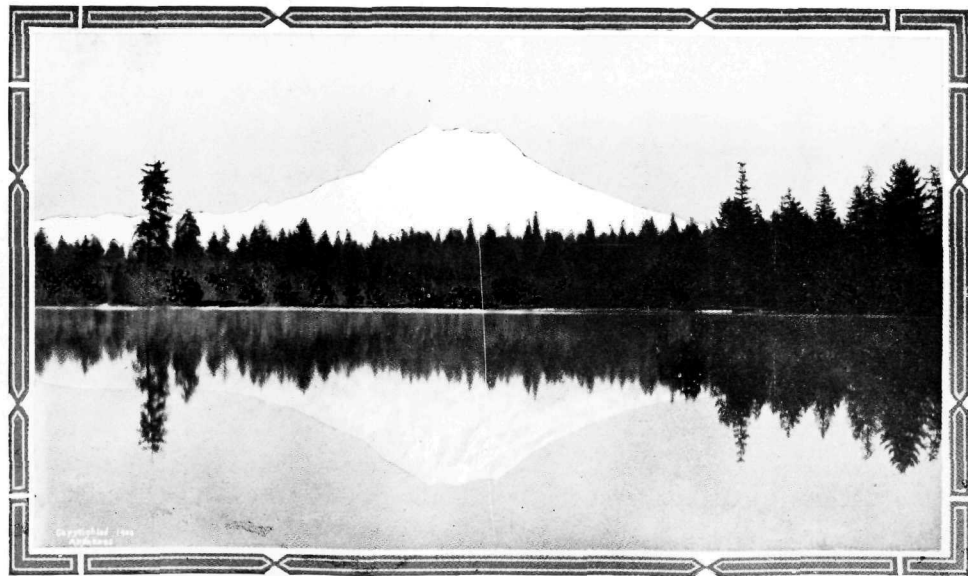
0 0068 00197368 1

*Whitworth  
College  
Annual  
1914*

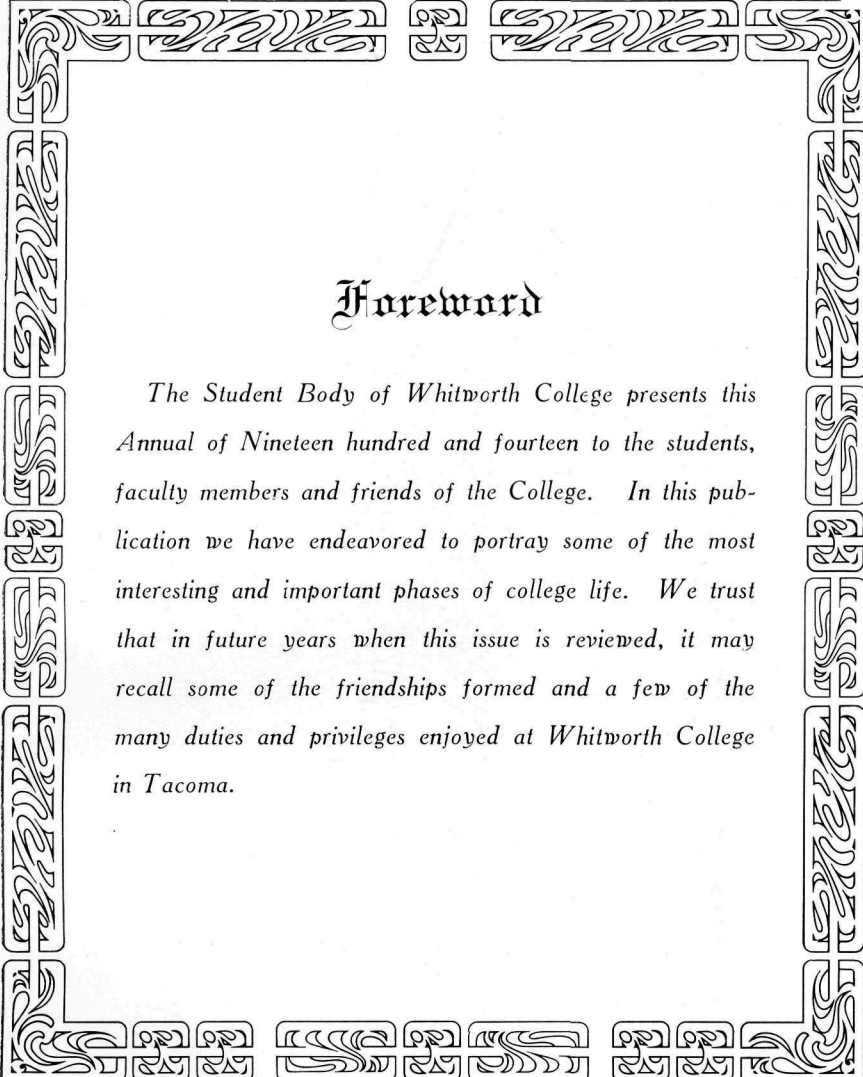


*Published by the Student Body  
of  
Whitworth College*

WHITWORTH COLLEGE LIBRARY  
SPOKANE, WA 99251



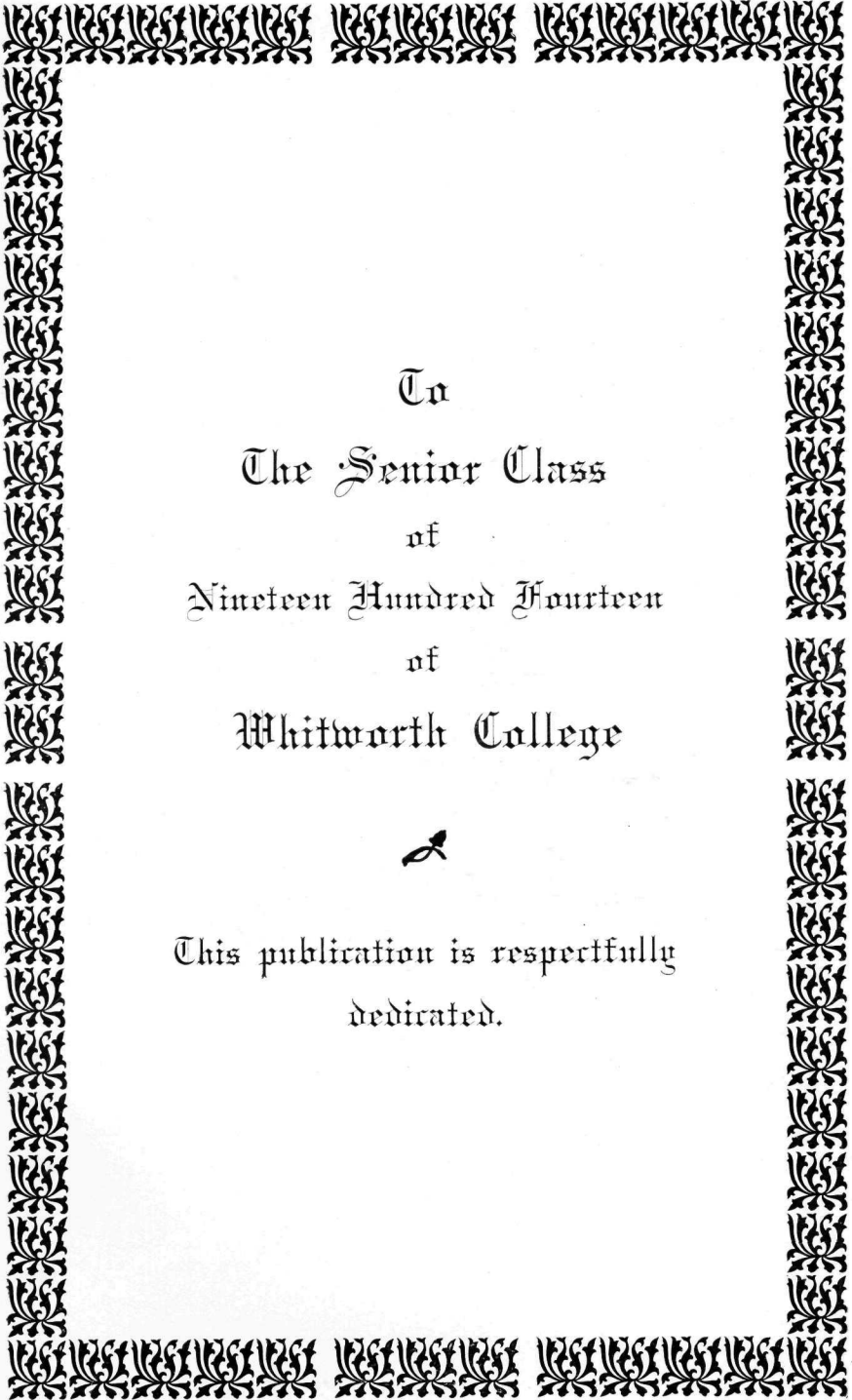
*Mt. Tacoma*



## Foreword

*The Student Body of Whitworth College presents this Annual of Nineteen hundred and fourteen to the students, faculty members and friends of the College. In this publication we have endeavored to portray some of the most interesting and important phases of college life. We trust that in future years when this issue is reviewed, it may recall some of the friendships formed and a few of the many duties and privileges enjoyed at Whitworth College in Tacoma.*

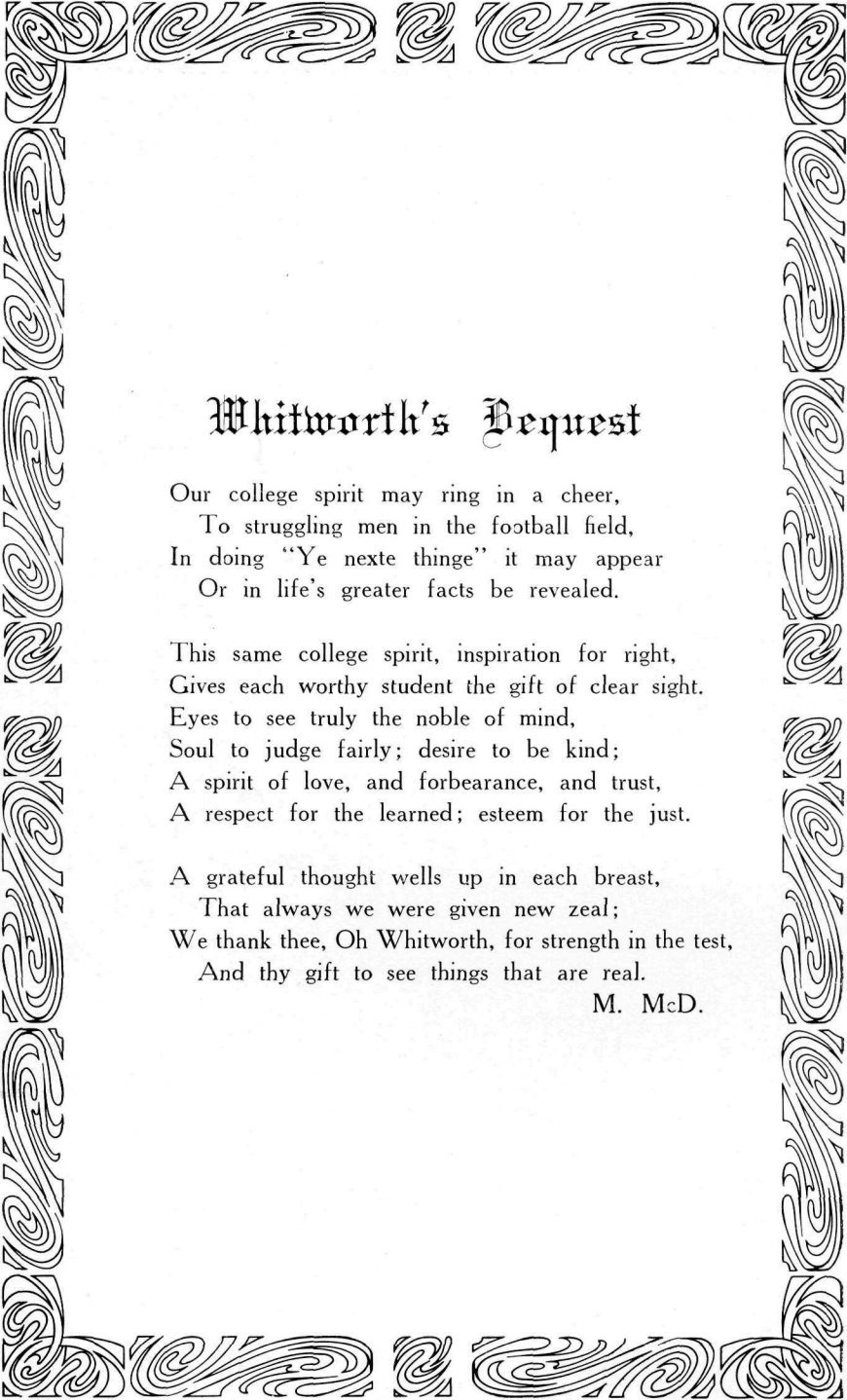




To  
The Senior Class  
of  
Nineteen Hundred Fourteen  
of  
Whitworth College



This publication is respectfully  
dedicated.



## Whitworth's Request

Our college spirit may ring in a cheer,  
To struggling men in the football field,  
In doing "Ye nexte thing" it may appear  
Or in life's greater facts be revealed.

This same college spirit, inspiration for right,  
Gives each worthy student the gift of clear sight.  
Eyes to see truly the noble of mind,  
Soul to judge fairly; desire to be kind;  
A spirit of love, and forbearance, and trust,  
A respect for the learned; esteem for the just.

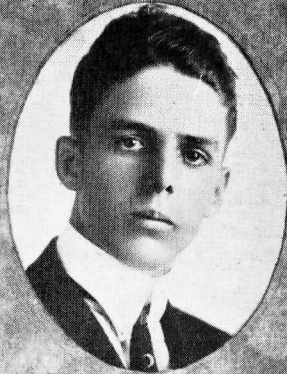
A grateful thought wells up in each breast,  
That always we were given new zeal;  
We thank thee, Oh Whitworth, for strength in the test,  
And thy gift to see things that are real.

M. McD.

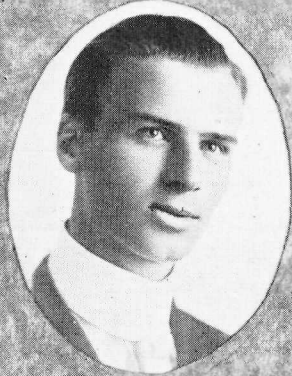




ELLA HOSKA '15  
EDITOR-IN-CHIEF



JAS. W. ROBINSON '16  
BUSINESS MANAGER



CHARLES E. WARE '17  
ASST. BUSINESS MGR.



HENRIETTA BURMEISTER '15  
ASSISTANT EDITOR



ELLA LOWMAN '16  
STAFF ARTIST



PAUL ZOBRIST '18  
2<sup>ND</sup> ASST. MANAGER

A  
·  
N  
·  
N  
·  
U  
·  
A  
·  
L  
·  
S  
·  
T  
·  
A  
·  
F  
·  
F

## History of Whitworth College

Whitworth College had its origin in the establishment of a Presbyterian Academy at Sumner, Washington, in 1884, known as Sumner Academy. In 1890 the Board of Trustees secured a charter for a college. It was, therefore, reported to and taken under the care of the Synod of Washington in September of the same year.

After struggling through the panic and depression from 1893 to 1897 an invitation was received from Tacoma, Washington, to remove the institution to that city. This invitation was finally accepted and the college located in the City of Tacoma in February, 1900. This removal was accomplished through the generosity of the citizens of Tacoma and the late H. O. Armour, of New York, who, to insure its permanent establishment as a Christian college, gave his personal checks for \$100,000, besides valuable land holdings in West Seattle.

The late Dr. Calvin W. Stewart was its first president and it was through his personal solicitation that Mr. Armour was induced to aid the college. Too much credit cannot be given Dr. Stewart for his self-sacrificing service and loyalty to the cause in these pioneer days of the institution.

Whitworth College was again destined to change its location. In August, 1913, the Presbytery of Spokane, encouraged by the pledged support of the citizens of Spokane, made overtures to the Board of Trustees of Whitworth College to remove to that city and, after months of consideration, always having in view the larger usefulness of the institution, it was finally resolved by the Board of Trustees to accept the offer of Spokane and move the college to that city.

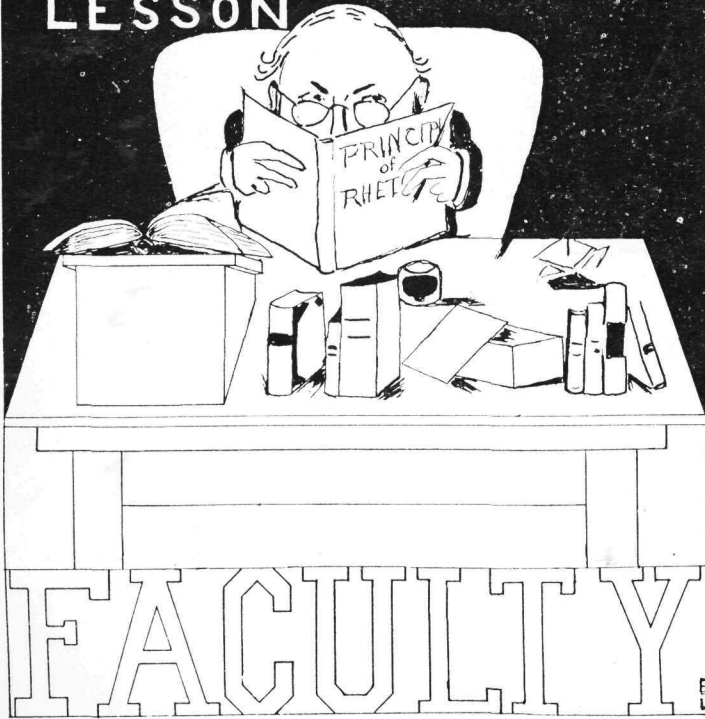
The conditions of removal, which have been met, are a campus of one hundred acres and forty-five per cent. interest in five hundred sixty acres adjoining; this being the gift of Mr. J. P. Graves and his associates. In addition thereto, the citizens of Spokane contributed \$100,000 in cash.

A force of forty men is now located on the new campus engaged in the construction of the first building, which is to be completed and ready for occupancy August 15, 1914. The college will, therefore, open in Spokane in the fall of 1914, with the utmost confidence that a career of great influence and usefulness is before it.

The avowed object of the College and inspiration of all its ideals is not sectarianism, but a liberal education under the most helpful christian influence. Its scholastic standards are high; its faculty is competent and consecrated; its courses are thorough and comprehensive, its degrees are recognized by our best Universities.

*DONALD D. McKAY, President.*

700 PAGES IN  
ADVANCE - NEXT  
LESSON





Donald D. McKay, A. M., D. D.,  
President



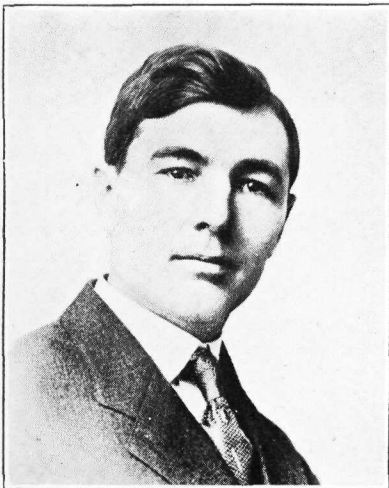
Wallace H. Lee, A. M., LL. D.,  
Dean

Latin, Greek, Bible



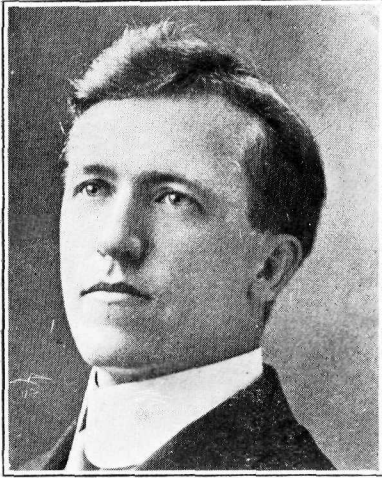
Florence G. Douglas, A. M.

English Language and Literature



George B. Jackson, A. M., A. B., A. B.

Modern Languages



Harold F. Holcombe, A. B.

Biological Sciences

Jessie K. La Wall, A. B.

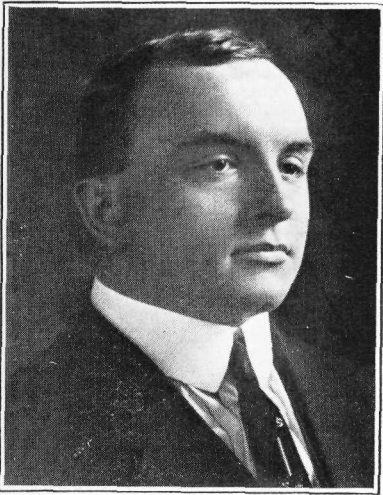
Assistant in Latin



Herschel E. Hewitt, A. B.

Chemistry and Physics





David Guy, B. S., B. S.,

Mathematics

Margaret Longstreth, A. B.

Assistant in French



John R. Hayes, A. B., A. M.

Athletic Coach

History and Economics





Donna Bell Elder Jackson

Public Speaking

Florence Bedell, A. B.

Home Economics

Life Certificate from D. A. and S.—

Kansas State Normal



Glee Lentz

Public Speaking and Physical Director

Graduate of Cumnock School of  
Oratory, Northwestern University







Antoinette Bruce

Music

Four European Musical Certificates

Rev. Dr. C. K. Staudt, A. B., Ph. D.,

Bible

Florence Mustard

Secretary.

## To Friendship

*Show me a thing in this wonderful world  
So precious and true as a friend;  
Some one who stands with his banner unfurled  
To faithfully march to the end.  
One who knows and feels each trial and need,  
And cheerfully faces the test,  
Who through the fighting is willing to bleed  
For that which he thinks to be best.*

*What comfort and joy to have such a friend,  
And yet can we ever know  
How much it means to be able to lend  
One ray which will set hearts aglow?  
Next to having a friend both loyal and true  
The greatest thing is to be one.  
Whitworth, we thank Thee, by deeds that we do  
For the friendships which Thou hast begun.*

*When everything else in life is a dream,  
Our friendships still true will remain  
And to each of us it will always seem  
That we are at Whitworth again.  
We'll ever feel the tender tie  
Which binds us all to-gether  
And when our ships at mooring lie  
We'll smile on roughest weather.*

Ella Hoska—'15.

## Constantia Vireit

*(Inspired by a visit to the following personages in the year  
1930)*

I am in the frozen Northland  
Where the sunlight seldom shines  
And I see a bold explorer  
With his danger hardened band.  
He is silent and slow of speech  
But is on his way to fame  
And need I hardly tell you now  
That Turnbull is his name?

I am now in a country village,  
With its quiet drowsy street  
And I see a little rural inn  
Where the gossip-mongers meet.  
And seated at the little door,  
With her knitting on her knee,  
Is a handsome buxom Lady  
Whose name was one time Lee.

I am at the Barnum Bailey now  
And I see the horses prance.  
To the gaudy riders on their backs,  
I give a wondering glance,  
When what is my astonishment  
My pride what may it be,  
When in the foremost rider  
I recognize Marie.

What is this handsome edifice,  
Which before me I can see,  
With its large and carved portals  
And its marble floored entry?  
This is the New York National Bank  
In which you'll place great stock  
When you learn its honored president  
Is our former friend, Murdock.

I enter a crowded courtroom  
Where the strife is running high;

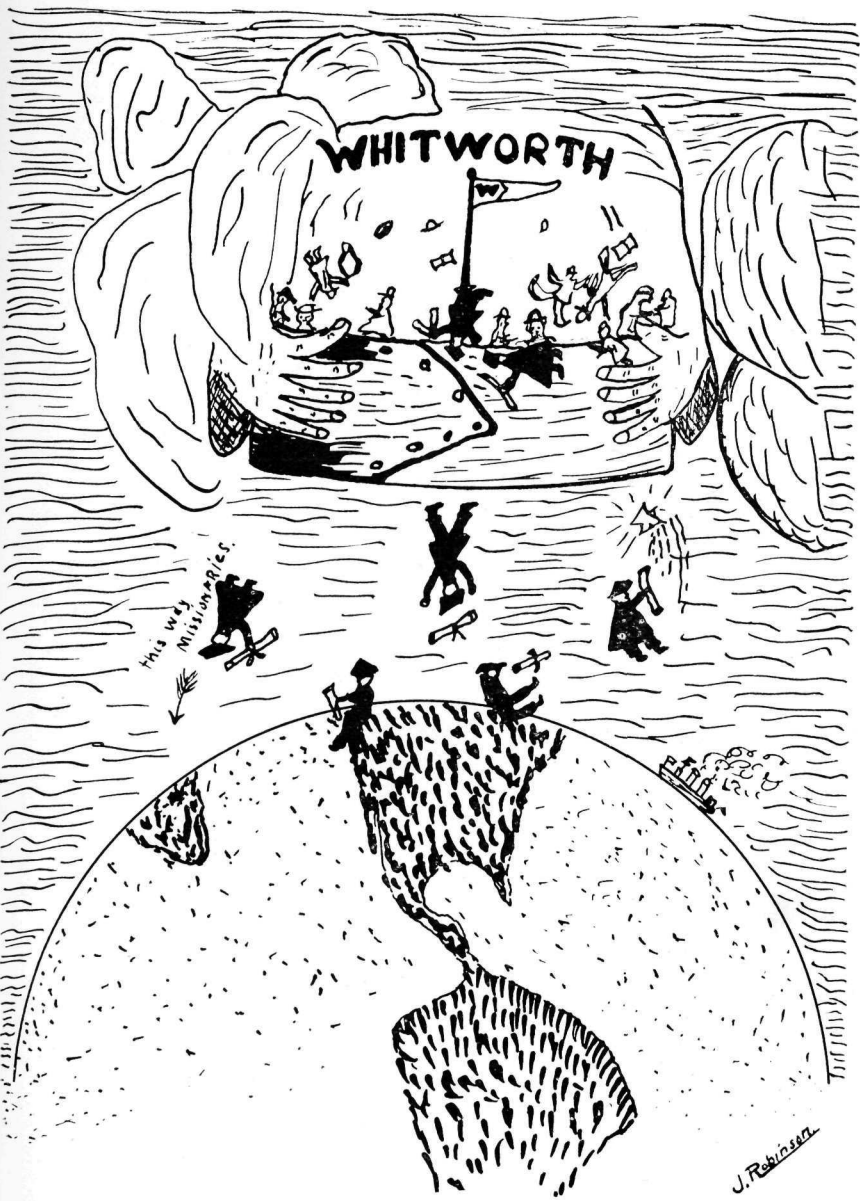
The Judge is frantically tearing his hair  
And the jury is ready to cry;  
And the attorneys for the prisoner  
Whose praises loud are sung  
Are celebrated far and wide,  
By the names of Corey and Young.

Who is this sprightly dapper man,  
Who so fluently doth speak,  
Five languages besides his own  
And makes up rhymes in Greek?  
This is the noted Polyglot  
Who leads a language club  
And who, in days long since gone by,  
Was simply titled, "Dub."

And next I see a doctor grave,  
With wise and haughty look,  
And I tremble sore, with sad dismay  
As he searches in his book,  
To see if he must cut a leg,  
Or saw an arm off, too;  
For this is a very simple thing  
For Doctor Ralph to do.

I am weary and tired with walking  
And I seek an elevator  
When what is my horror, fear and dread  
To meet a demonstrator.  
She reels off speeches by the yard  
And gives us samples too  
And I say, as I sink back pale and faint,  
"Oh Frances, can this be you?"

I enter now the opera house,  
With its throng both rich and fair,  
And I see a great musician  
With long and curling hair.  
And he bows to all the people,  
With his proud and haughty ways,  
Till I feel quite proud I knew Art, once,  
In the good old Whitworth Days.



# SENIORS

# History of the Senior Class

CALENDAR OF THE CLASS OF 1914

o o o

## FRESHMAN YEAR. 1910-1911

President—Arthur Gunn.

Soph-Freshman Cane Rush. We won!

Tug-of-War. We won!

Cap and Gown Day. Remember how we fooled the Sophs by accidentally (?) dropping a copy of our stunt in the library?

Class Party at Helen Miller's home. Where, oh where were the Sophs? But, never mind, our big class banner added greatly to the beauty of the room.

We had four men on the football team, this year, one being Captain.

One man won a place on the basketball team.

We furnished a manager of the baseball team.

One of our members won the Queed prize.

## SOPHOMORE YEAR

President—Lawrence Turnbull.

Soph-Freshie Can Rush and other activities. We tied the Freshies.

Cap and Gown Day. We discovered the plan of the Freshies stunt but allowed them to go on with their preparations unmolested.

Class Party at Dean Lee's. What did you say about marshmallows?

Five of our men made the football team this time. Two made their letters in basketball. Although two men played the season in baseball, only one made his letter.

The Editor-in-Chief of the Whitworthian was a member of our Class.

## JUNIOR YEAR

President—Bertha Lee.

Class Party at Pansie Lawrence's. Will we ever forget the little playlet entitled, "Gee, ain't it fierce?"

We gave very successfully the play, "A College Town."

"Spread" dinner at Mrs. D. O. Ghormley's, by the Class to those who helped us give our play.

Junior-Soph party in the gym. Remember the Cider!

Cap and Gown Day. That was the time we gave the Seniors the pleasure of "seeing themselves as others see them." The day ended pleasantly with a banquet at the Commercial Club.

As a class we had charge of the refreshments at the Colonial Party.

Five men won letters on the football team, one being the Captain and another the manager. Two won letters in basketball. The Captain was one of our classmates.

Our class had the honor of furnishing the President of the Student Body.

Both the Ballard and the I. P. A. contests were won by a member of our class, while another man took the Long-Black essay prize.

## SENIOR CLASS

President—Ralph Ghormley.

Cap and Gown Day. We were splendidly entertained by the Juniors all day and were their guests at the Commercial Club in the evening. Three cheers for the Juniors!

Class Party at Ralph Ghormley's. Did anyone ever say we aren't good talkers?

"Feed" in the Domestic Science Rooms. Here we discovered what good cooks the girls were and what splendid dish washers the boys make!

The Class took charge of the finances of the Colonial Party—not very pleasant work but we managed it all right.

Class Dinner at Dean Lee's home. What's your nickname?

Mrs. Bell entertained us one evening very pleasantly at her home.

Three men won their letters in football this season including the Captain and Manager.

In basketball the two best men on the team were members of our class.

The same man was re-elected as President of the Student Association. So we were well represented again.

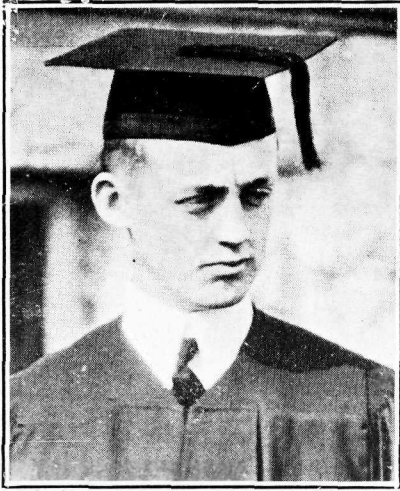
The two men who have served as editors-in-chief of the Whitworthian this year have been 1914 men.

The Senior Class Play, "The Knight of the Burning Pestle," will be given during Commencement Week.

Commencement Exercises, June 7-11.

Thus endeth the four year College history of the Class of 1914, but our real history has only just begun.

Bertha F. Lee



BERTHA FORTMILLER LEE  
 Graduated from Broadway High,  
 Seattle, 1909.

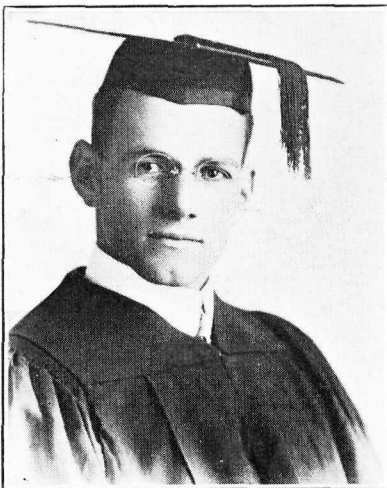
Entered Whitworth 1911.  
 Member of Kappa Gamma, Treasurer,  
 1911; Secretary, 1912; Vice-President,  
 1913; President 1914.

Member of Student Association Board,  
 1913 and 1914; Secretary of Board, 1914.  
 Member of Sigma Delta, 1911 and 1913.  
 President of Class, 1913.

Personal Editor of Whitworthian, 1913.  
 Member of Y. W. C. A.; Music Com.  
 chairman, 1912; Treasurer, 1913; Presi-  
 dent, 1914.

"She is—but words fail to tell the  
 what;

Think what a woman should be—she  
 is that."



AUGUSTUS WILLIAMS  
 Graduated from High School, Rushville,  
 Indiana, 1909.

Entered Whitworth, 1909.  
 Member of Football team, 1909-1910.  
 Stayed out two years and re-entered,  
 1913.

Captain of Football team, 1913-1914.  
 President of Student Association, 1913  
 and 1914.

Captain of Basketball team, 1913-1914.  
 Member of Criterion Literary Society.  
 Member of Y. M. C. A.

"I have kept one secret in the course  
 of my life—I am a bashful man. No-  
 body would suppose it; nobody ever does  
 suppose it, but I am naturally bashful."



RALPH K. GHORMLEY  
 Graduated from Tacoma, High, 1910.  
 Entered Whitworth, 1911.  
 Played on Football Team, 1911-1912.  
 Received "W's" for Football, 1913-1914.  
 Played on Basketball Team, 1914.  
 Vice-President Student Association,  
 1914.  
 President Boys Glee Club, 1913.  
 President of Class, 1914.  
 Member of Y. M. C. A., Vice-President,  
 1914.

"A truer, nobler, trustier heart.  
 More loving or more loyal, never beat  
 Within a human breast."





RUTH COREY

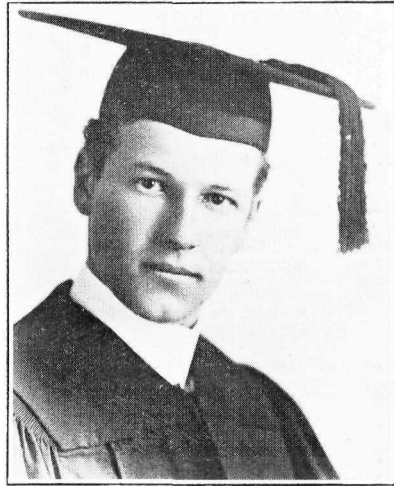
Graduated from Tacoma High, 1910.  
Entered Whitworth, 1911.  
Member of Kappa Gamma, President,  
1914.

Member of Y. W. C. A.

Treasurer of Class, 1911.

"Is she not more than painting can  
express

Or youthful poets fancy when they  
love?"



ARTHUR GUNN, JR.

Graduated from Wenatchee High, 1910.

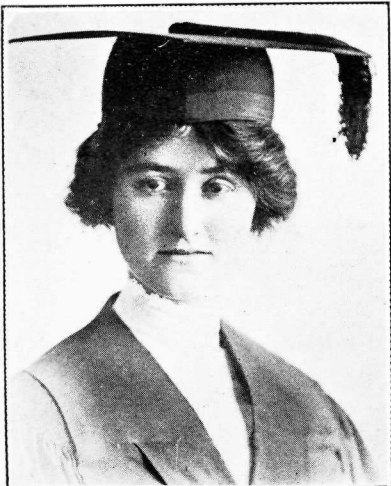
Entered Whitworth, 1911.

Member of Criterion Literary Society,  
President, 1913.

Member of Y. M. C. A., Treasurer, 1913.

Editor of Whitworthian, 1914.

"Genteel in personage,  
Conduct and equipage,  
Noble by heritage  
Generous and free.



CLARA YOUNG

Graduated from Tacoma High, 1908.

Entered Whitworth, 1908.

Taught School, 1910-1913.

Re-entered Whitworth, 1914.

Member of Kappa Gamma, President,  
1912; Vice-President 1914.

Secretary-Treasurer of Class, 1914.

Y. W. C. A. member.

"Trimness in her steps,

In every gesture, dignity and love."



FRANCES GERTRUDE WAKEFIELD  
Graduated from Fairhaven High,  
Bellingham.

Attended Summer School, Bellingham  
State Normal, 1911.

Entered Whitworth, 1911.

Member of Criterion Literary Society.

Member of Y. W. C. A.; Extension  
Com. Chairman, 1912. Vice-President  
and Chairman Membership Com., 1913.  
Chairman Conference Com., 1914.

Secretary Student Volunteer Band,  
1914.

"Good Morning, Merry Sunshine."

LAWRENCE R. TRUMBULL

Graduated from Tacoma High.

Entered Withworth, 1911.

Member of Y. M. C. A.

Member of Executive Board, 1911.

Secretary-Treasurer of Class, 1911.

Leader of College orchestra, 1912.

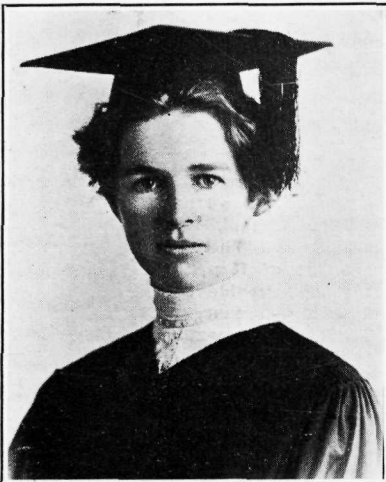
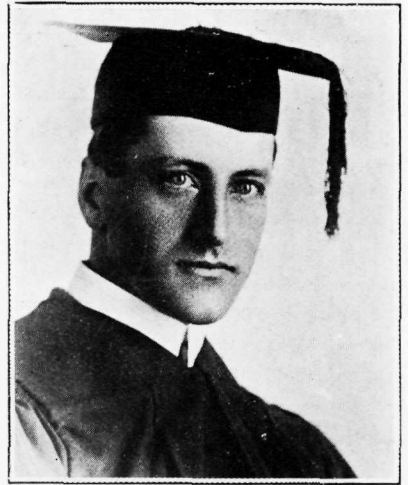
President of Class, 1912.

Entered Pierce County Meet, 1912.

Editor of Whitworthian, 1914.

Second Team Basket-Ball, 1914.

"Actions speak louder than words, so  
what's the use of talking."



MARY NICHOLSON

Graduated from Tacoma High, 1908

Graduated from U. P. S. Normal School,  
1910.

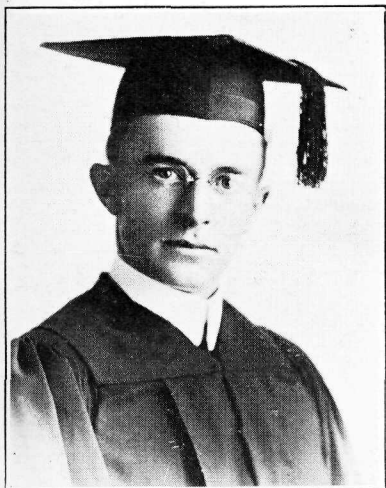
Taught School Two years.

Entered Whitworth, 1913.

Member of Y. W. C. A.

College Reporter for the News and  
Ledger, 1914.

"Oh, what a treasurer will she be  
Of goodness, sweetness and true  
nobility."



ARMOUR MURDOCK

Graduated from South Bend High School,  
South Bend.

Entered Whitworth, 1911.

Member of Student Board, 1911-1912-  
1913-1914.

Advertising Manager, Whitworthian,  
1911.

Baseball Manager, 1911.

Yell leader, 1911.

Editor of Whitworthian, 1912.

Manager of Football Team, 1913-1914.

Vice-President of Class, 1914.

Class Poet.

"I was born under a rhyming planet."

## Class Poem



### THE EMBARKING

The good ship staunch at mooring lies  
Her course is set, Her wings are spread,  
Her keel is steady in the deep  
A fair sky arches overhead.

No time for sadness of farewell  
No time for doubt or passing fear  
The true ship craves the foaming brine  
And not the silent, restful, pier.

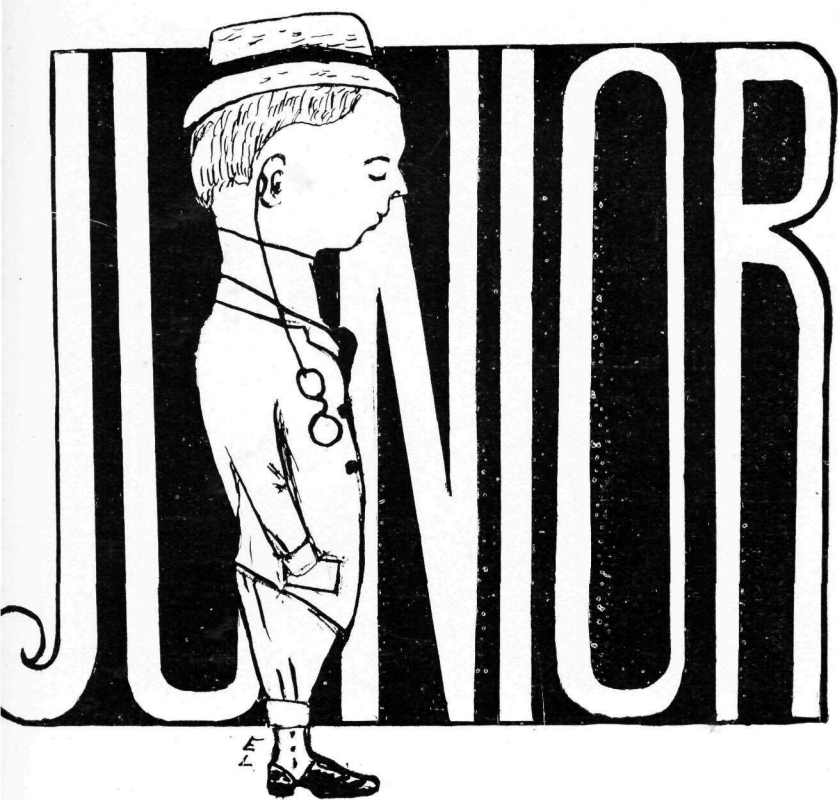
Cast off the lines. Make fast the sheet.  
Take no last look of fond good-bye.  
Our prows are built to breast the deep.  
Where billows surge and seas run high.

The sea of life is beckoning.  
Our rigging strong, and snowy sail  
Are chafing like a captive bird,  
To meet the challenge of the gale.

—Armour Murdock.



Ella Hoska, *Society Editor.*  
Arthur Gunn, Jr., *Editor-in-Chief.*  
James Robinson, *Business Manager.*  
Ella Lowman, *Staff Art.st.*  
Charles Ware, *Assistant Business Manager.*  
Virginia Clark, *Exchange Editor.*  
Florence Rambo, *Literary Editor.*  
Ralph Ghormley, *Athletic Editor.*



## Fifteen Whitworth

"Have you heard the news?" asked Thirteen.

"Nope! What?"

"We got a new little sister!"

"Don't want a new little sister!" pouted Fourteen.

"She's named Fifteen," Thirteen continued. "Look! there she comes! Ain't she some class! She walks around here like she always could! Let's talk to her—Hello, Fifteen, where you going?"

"I'm looking for Fourteen, mother wants the cane he has."

"I'm Fourteen. Get it from me if you can!" Whereupon followed a terrible conflict which ended in Fifteen's getting the cane.

Nevertheless, soon Fourteen was completely taken by Fifteen's irresistible charms. Once Fifteen thought she'd pretend marrying Fourteen, but before the ceremony took place discoveries of Fourteen's unworthiness convinced her differently.

Fifteen was now a year old. "Come see the new baby," she called.

"Where is it?"

"I've got it in the high chair till I teach it how to get around."

"Fifteen!" sounded baby's cry.

"What is it, Sixteen?"

"Me want cane to wide hawsy"

"All right, take it. You have nine reasons to my four for having it," replied Fifteen unselfishly.

In spite of Fifteen's loving attractions Sixteen proved unworthy. While she slept, Sixteen stole her clothing to keep her prisoner. But Fifteen was too sharp! and by means of Sixteen's apparel was able to reclaim her own from high tower and dark hillside.

Several times Fifteen took some playmates for a launch-ride. They always had such fun the others were sorry they weren't Fifteen.

When she was two years old Sixteen was so busy caring for the newest baby, Seventeen, that Fifteen played dolls all by herself. She had a doll club called "The Cool Collegians," which her "Aunt from California," took to Europe. It was so interesting all her friends came to watch her play.

Mrs. Whitworth once remarked to Fifteen, "Fourteen is going away from home. Will you help get him ready?"

"All I can! Before he goes I'll show him how he looks to us, and give him an idea of the two places he might go, as a guide; then have a bouquet in his honor!"

"A lovely idea, Fifteen, dear! You are a great comfort to me!"

"Thank you, dear mother, for all you are to me! We shall miss Fourteen!"

"Yes, but I still have you! and a great responsibility is yours! We are moving. Upon you will rest adopting the children to their new surroundings and the forming of the new home. Will you do it?"

"The best I can," replied Fifteen For—

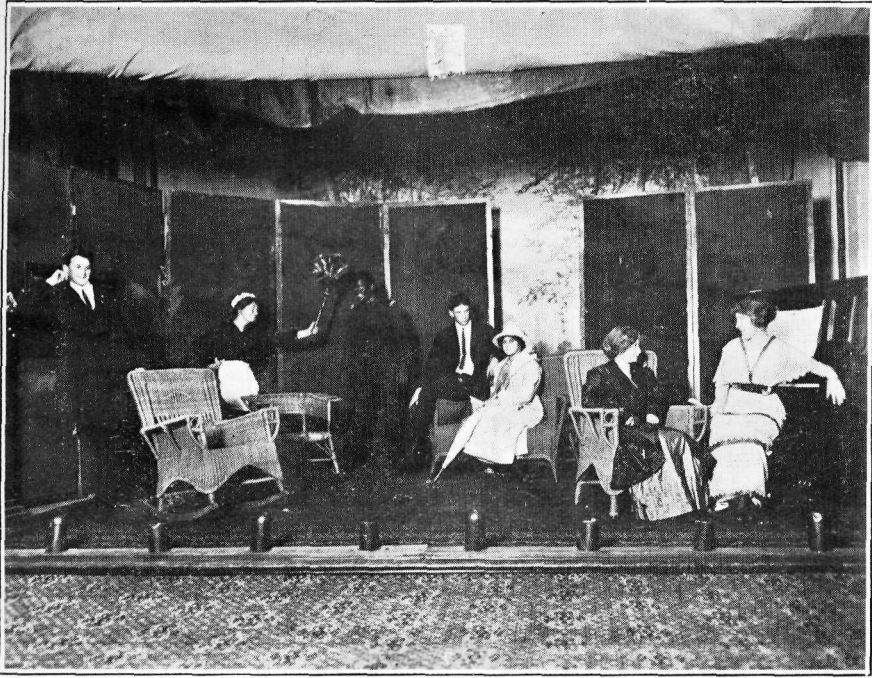
"Alma Mater, glorious!

Nothing can come between

The love there is forever

'Twixt thee and thy Fifteen."

—Ruth Lee.



SCENES FROM THE JUNIOR PLAY





## Junior Class '15

—o—

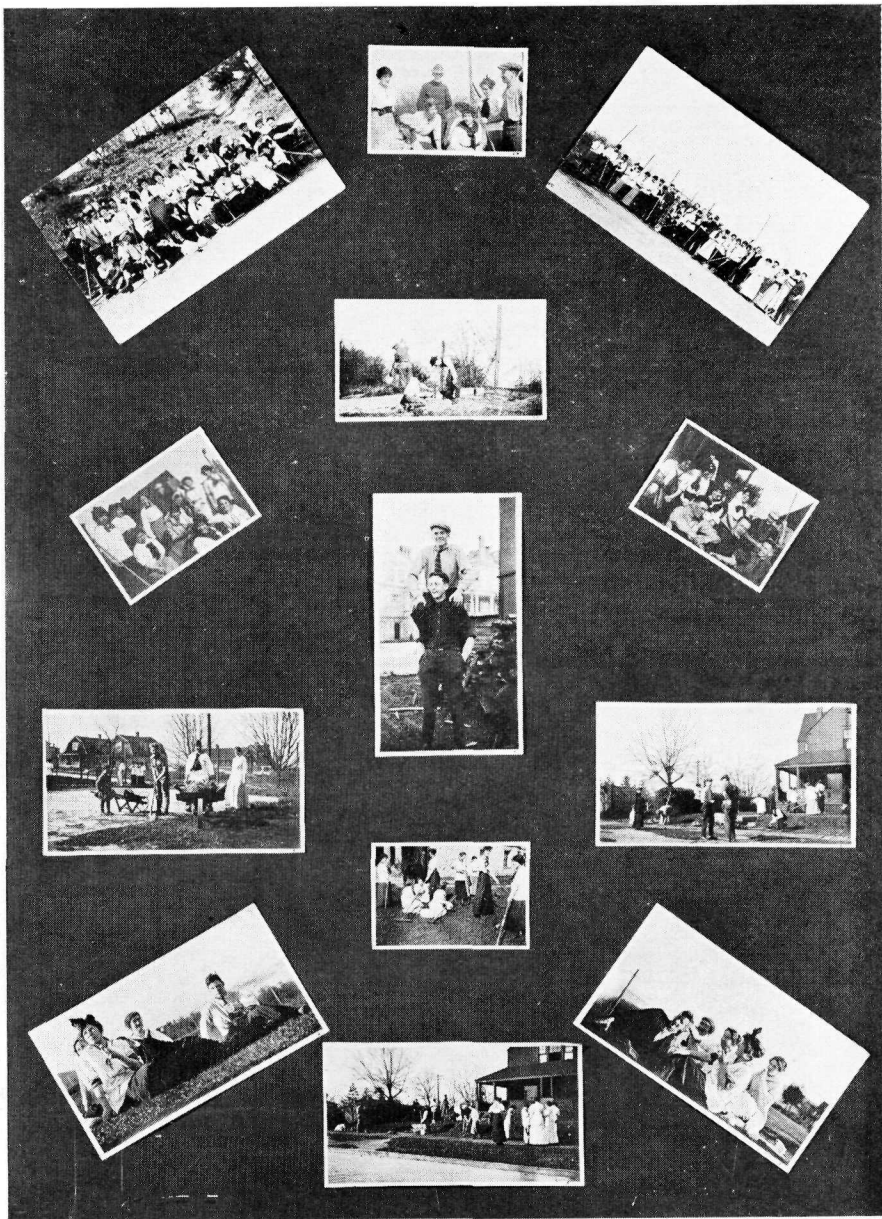
### OFFICERS

*President*, Ella Hoska.  
*Vice President*, Florence Rambo.  
*Secretary*, Isabelle Tunnard.  
*Treasurer*, Noel Thompson.

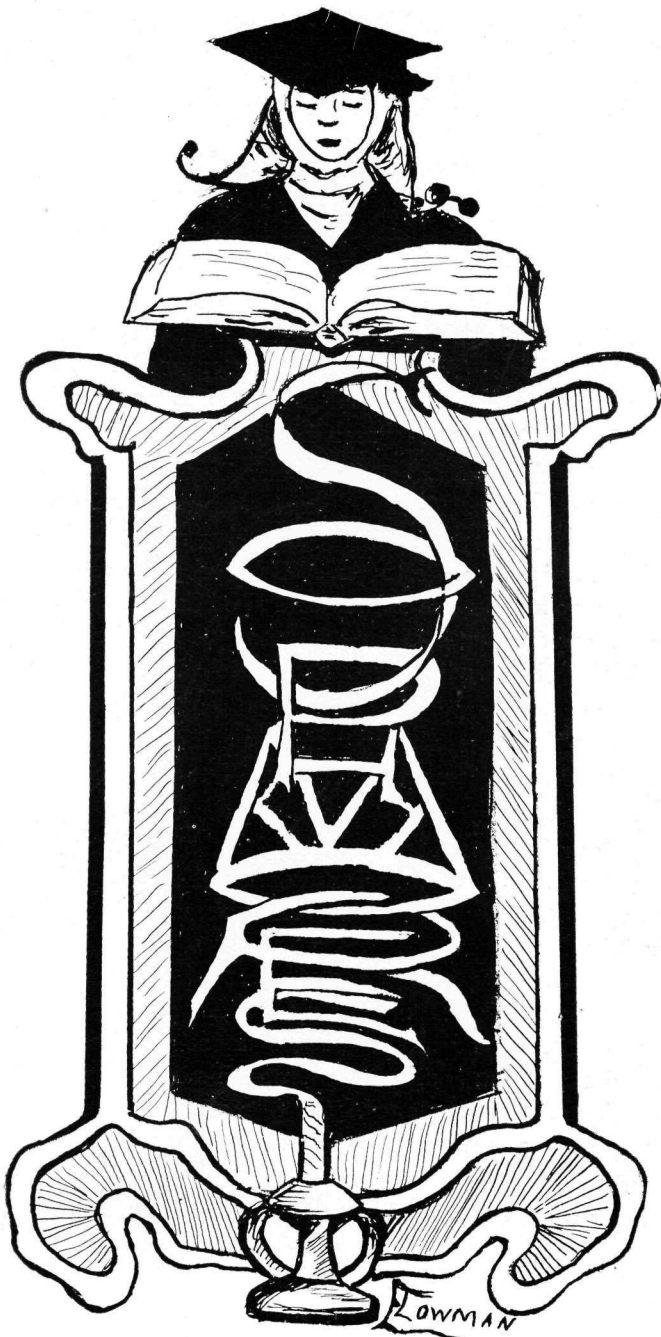
—o—

### MEMBERS

AMERMAN, BERTHA  
BROWN, NELL  
BURMEISTER, HENRIETTA  
GUNN, MARY  
HOSKA, ELLA  
SLANDIS, ORA  
LAWRENCE, PANSY  
LEE, RUTH  
McCLELLAN, ROY  
PARKER, CHARLES  
RAMBO, FLORENCE  
THOMPSON, NOEL  
TUNNARD, ISABELLE



CAMPUS DAY SCENES



## Saphamore's True Reportery

(With apologies to Smith)

It seems to us quite unnecessary to write a history of such a world renowned class as that of '16. But for the benefit of some poor unfortunates who might have been stranded on a lonely island during our short career, we will endeavor to relate a few of our wondrous deeds.

We embarked amidst a great storm of class spirit on the tempestuous sea of knowledge. The captain of our crew Gerald Longstreth, who had watched many such expeditions, called us together and tattooed each sailor with a little green bow.

Thru the wind and gale we hoisted our flag, until in battle it was torn to shreds by our enemies. When not far on our voyage we met a band of pirates and succeeded in kidnapping most of their number. Their chief, we carried to the tower of Bath, and the rest were finally placed in a lonely hut on the shores of Puget Sound. They were not left to starve, as you would expect, for that very night we gave them a "feed", which did indeed show our generosity.

This however was only to fatten them up for the auction block. As our funds had decreased during these wanderings, the sale of the captives brought us sufficient wherewithall to return home for the summer.

Not all of our brave sailors returned for the second voyage which began in September of the year fourteen. When the roll was called, this time by Captain Gunn, enough were present to again make us "Monarchs of all we surveyed." The captives, whom we took to do our bidding on this journey were "wearers of the green." For our amusement we compelled them to climb the flagstaff backwards. One refused, so we threw her into the mess house tied to a camp stool. Our angelic dispositions could not tolerate this brutality so we liberated these meek and obedient ones. On Cap and Gown Day our wings sprouted and were a visible sign of our reverence for the Seniors.

We hope to see our small boat sail on and on, and that each year will add to our number new sailors to take the places of those we lose, while being tossed about on the sea of knowledge.



SOPHOMORE CLASS OFFICERS



SOPHOMORE CLASS

## Sophomore Class Roll

—o—

CAMPBELL, LOIS  
CAMPBELL, RUTH  
CLARKE, WILMA  
DONALD, PIERCIE  
GRINNELL, EMMA  
GUNN, TOM  
LAUGHLIN, IVA  
LONGSTRETH, GERALD  
LOWMAN, ELLA  
MOORE, OLIVE  
PEARSON, LAURA  
PRICE, LELIA  
ROBINSON, ESTELLA  
ROBINSON, JAMES  
SCHNEBLY, EDITH  
TAKAKU, GEORGE  
TARNER, MINNIE  
WALMSLEY, ROBERT  
WHIPPLE, GLADYS



## Executive Board Officers

Armour Murdock, *Football Manager.*

Bertha Lee, *Secretary.*

Edward Harwood, *Baseball Manager.*

Augustus Williams, *President.*

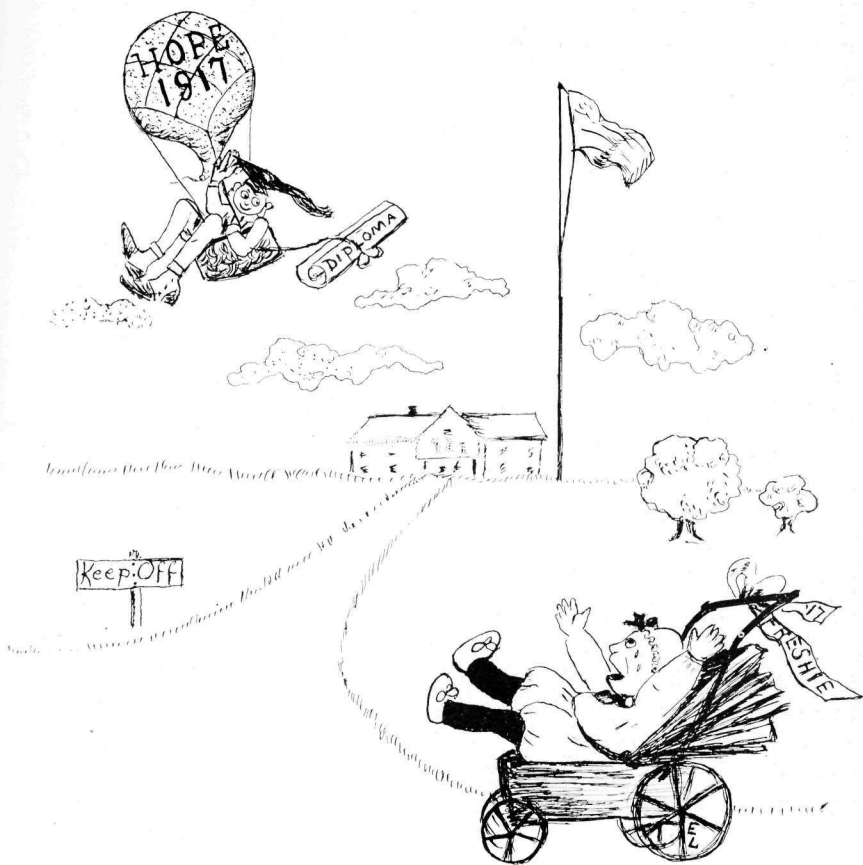
Glenn Rhodes, *Treasurer.*

Ralph Ghormley, *Vice President.*

Vernon Bacher, *Basket-ball Manager.*



WHITWORTH COLLEGE  
Whitworth  
Spokane, Wash.  
Spokane, Wash.



# FRESHMAN

## Freshman Class History

The history of the class of 1917 up to date! One whose knowledge did not include acquaintance with this class might think that subject void of possibilities. But the reverse is true in this instance. The words call up a vision as pregnant with suggestive light and color as an impressionistic painting, a panorama of swiftly moving events, all showing the spirit and strength of this class.

From the second day of the term when the lively Freshmen got out their manifestos to the surprise and chagrin of the Soph's. they have evinced a dash and "go" that is rarely equalled.

The class lost no time in organizing, and soon diminished Ware's exuberancy by conferring the responsibility of the presidency upon him. Virginia Clark was made vice-president, and Art Lee was naturally the one to hold the money,—because of his good family and especially the notorious grandfather of the prophetic turn of mind. Ruth Condit won the secretaryship.

The cane rush brought out the interesting fact that this class had unusual physical strength, and to this victory was added the tug-of-war. Perseverance, too, could be mentioned here, for did not the Freshman banner wave for five triumphant hours from the highest pinnacle of the library? The only fitting celebration could be a party, so we had it, and it was a worthy climax to the first conquests.

On class day the underclassmen forgot hostilities that proper respect might be shown the Seniors, and outwardly signified their entire guilelessness by suddenly growing wings for the occasion. The class was ably represented in the congratulatory speeches to the Seniors by the president,—and who can forget the look of dignity that "Izzy" wore? These events were followed by the underclassmen party, when the Freshmen and Sophomores again met on friendly terms. It was a "kid" party, and an entire success.

The artistic ability, and co-operative spirit of 1917 was manifested at the Colonial Party. Everyone voted the gym. decorations the "best ever."

It is in athletics that the Freshmen have especially distinguished themselves. Our men on the football team,—Hoagland, Grinnell, Hansen, Rushmer, have made records that not only the class but the whole school can point to with pride. Hoagland was star of the basketball team, Ware also got his letter. Others will be out for track.

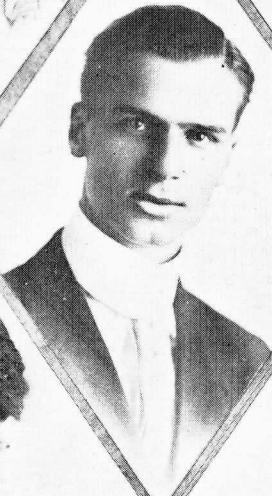
We can only say that we believe the future will develop more class spirit in us, and promise that it will be turned into the general channel to swell the stream of school loyalty.

M. McD.

CHARLES E. WARE  
PRESIDENT



SEC'Y.  
RUTH CON DIT  
MINNIE McDOWELL  
HISTORIAN



VICE-PRES.  
VIRGINIA CLARK  
ARTHUR LEE  
TREAS.



1917

FRESHMAN CLASS OFFICERS



FRESHMAN CLASS

## Freshman Class Roll

ALLEN, PEARL  
BELL, MARTHA  
BURGE, HAZEL  
COOK, FLORENCE  
CONDIT, RUTH  
CLARK, VIRGINIA  
FOX, CALVIN  
FRANCE, MILDRED  
GRINNELL, CHARLES  
HANSEN, HENRY  
HOAGLAND, JAY  
JOINER, ANNE  
LARSON, ELIZABETH  
LATTA, MILDRED  
LEE, ARTHUR  
LOMAS, LORAINÉ  
MacDOWELL, MINNIE  
McCLAIN, LEWIS  
MILLER, FRANCES  
MILLER, ELLA  
OZAKI, MYOTARO  
PARKER, GEORGE  
PETH, HAZEL  
RUSHMERE, ALLEN  
WARE, CHARLES

## Happiness

A sunbeam came down from the far azure blue,  
It fell on a bud that was watered by dew.  
"Open up, little blossom! your fragrance pour out!  
Open up to the sunshine, open up, look about!  
Let the world, of your beauty and fragrance have share,  
For there's cheer, and there's happiness hidden in there."  
And slowly unfolding, one petal by one,  
It opened its chalice to take in the sun.  
A soft zephyr blew up from over the sea,  
And oh! how the flowerlet danced then in glee.

By that way came a traveler, weary and worn,  
And he threw himself down near the flower to mourn.  
"I fear," said the blossom, "the poor man is sad,  
I had no idea but the whole world was glad.  
Now what can I do to bring cheer to his heart  
Such sadness is selfish, I'm sure, on his part."  
The sunbeam was right when it kissed me and said,  
"Open up, little blossom, your beauty to shed  
On the world that's around you! oh just look about!  
From yourself little blossom, come out, oh, come out!  
And now since I did, it's a new world at hand  
Till I thought that just happiness dwelt in the land."  
Just then the bright blossom attracted his eye.  
He saw in its chalice the blue of the sky,  
The pureness of dew and the warmth of the sun,  
And the joy of a life which for others is run.  
Then he said in his heart "There's a cure for me here,  
I'll bear this sweet flower—this emblem of cheer—  
To my dear one that languishes long in her pain,  
Mayhaps it will bring her new hopes once again."

He carried it to her! Along with it went  
The love of a deed which for others is spent,  
The Happiness carried by the sunbeam and bower  
Will live on forever from that very hour,  
Because in this world there's no death to a deed  
Which brings ought of Happiness where there is need.

—Ruth Lee '15.



## Academy Class History

Four years ago when we proudly displayed ourselves in those first 'men's' trousers and long dresses we felt that the long cherished state of manhood and womanhood had at length been reached.

But even this new dignity could not prevent a few glistening rivulets from tracing our cheeks as our fond mothers untied the apron strings that had so long restrained and guided us and sorrowfully kissed us good-bye as we started for that wonderful land of the unknown, College.

Our ears still ring with the terrorizing cry, "new meat," the kind greeting we received from the upper classmen as weak voiced and loud socked, we appeared timidly on the campus.

During the following few weeks we furnished them with endless amusement. It was great fun to order us around and watch our faces whiten when they threatened to "hod" or to "tub."

We would willingly have permitted such innocent amusements at our expenses for were these not beings to be looked up to, super classy men, I mean upper classmen. Anyway these titles were synonymous to us, in our wide eyed awe. But when they began to use us as exercisers and muscle developers we revolted and issued a declaration of rights. It was this successful mutiny to old college custom in our first year, that gave us the freedom we enjoy to this day. Before winning our independence, however, some of the upper classmen must have added several inches to the girth of their biceps. Those were the days when a Prep assumed the sitting position only when absolutely necessary.

But since that day we have refused to permit any indignities from a college student and have preserved carefully our dearly won freedom.

In school activities our part has been prominent. In athletics we have contributed our share of participants and have supported all teams to the best of our ability. Among other officers during the four years, we have twice held the management of the Whitworthian and twice the baseball and track management.

We cannot help but point with pride to the record of the part taken by the present Academy Class of '18 in the school activities at dear old Whitworth.

—Edward P. Harwood.





# Academy Class Roll

—o—

## OFFICERS

*President, Glenn Rhodes.*

*Treasurer, Edward Harwood.*

—o—

## MEMBERS

*ALLARDYCE, FRANCES  
CHRISTOFFERSON, GEORGE  
COLLINS, FRANCES  
DRUSE, MILDRED  
FERRYMAN, HELEN  
GUNN, MARJORIE  
HARWOOD, EDWARD  
LEE, HELEN  
LONGSTRETH, EVELYN  
LONGSTRETH, EDWARD  
LOWMAN, GUY  
MATHESON, MARY  
MOORE, IDELLE  
RHODES, GLENN  
SYLVESTER, ANNE  
THOMAN, GLADYS  
TODA, YUICHI  
TREUTELAAR, HELEN  
WAKEFIELD, MAY  
WAKEFIELD, MILDRED  
WARBURTON, MAUDE  
ZOBRIK, MILDRED  
ZOBRIK, PAUL*





# Kappa Gamma

—o—

## OFFICERS

*President*, Bertha F. Lee.  
*Vice President*, Clara Young.  
*Secretary*, Nell Brown.  
*Treasurer*, Henrietta Burmeister.

—o—

## MEMBERS

BROWN, NELL  
BURMEISTER, HENRIETTA  
CLARK, WILMA  
CONDIT, RUTH  
COREY, RUTH  
FRANCE, MILDRED  
GUNN, MARY  
HOSKA, ELLA  
LA WALL, JESSIE  
LAWRENCE, PANSY  
LEE, BERTHA  
LEE, RUTH  
LOMAS, LORAINÉ  
LONGSTRETH, MARGARET  
LOWMAN, ELLA  
MOORE, OLIVE  
RAMEO, FLORENCE  
ROBINSON, ESTELLA  
SCHNEBLY, EDITH  
WHIPPLE, GLADYS  
YOUNG, CLARA



# Y. W. C. A. 1913-1914

## OFFICERS

1913-14—

1914-15—

Bertha Lee.....	<i>President</i> .....	Mary Gunn
Frances Wakefield.....	<i>Vice President</i> .....	Ruth Lee
Virginia Clark.....	<i>Secretary</i> .....	Iva Laughlin
Florence Rambo.....	<i>Treasurer</i> .....	Ruth Campbell

The Y. W. C. A. has held its place this year as the strongest organization in the school, promoting the physical, intellectual, social and spiritual welfare of the college girls. Perhaps we would find the secret of the year's accomplishments if we could have gone a few days before the beginning of the new year to Dr. McKay's summer home on Wollochet Bay. In this beautiful spot the girls of the cabinet, with their president and Miss Fox, our student secretary, gathered that they might make definite plans together and gain a deeper consecration for the year's work. The first day of school found them eager to put their plans into action. The new girls were welcomed and made to feel as much at home as possible and the social committee busied itself with the welcome party and the reception for all the new students.

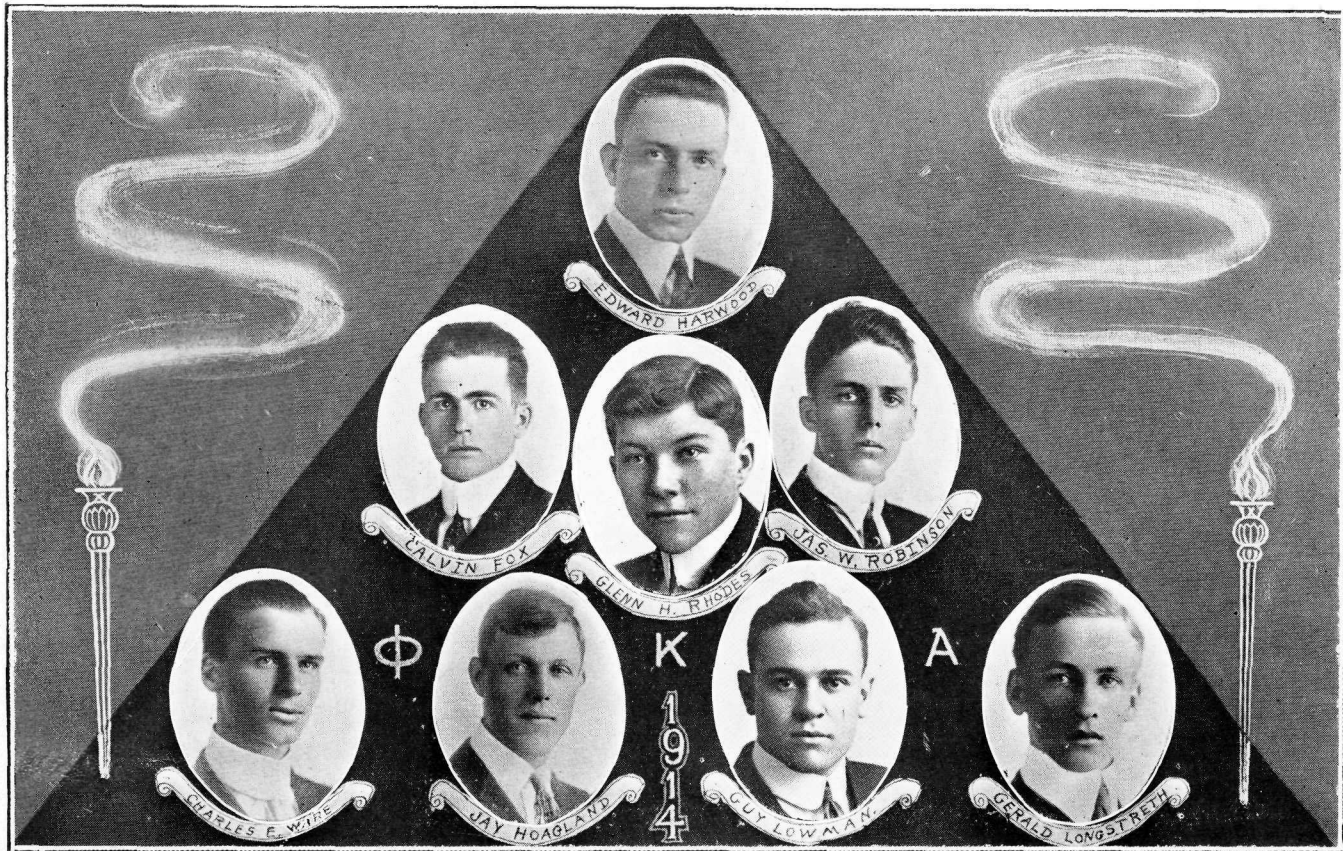
At least seventy-five per cent of the girls have attended our devotional meetings. We have had strong speakers who brought us new aspirations and inspirations as well as good practical everyday ideals. We will always remember such talks as Mr. Connor's "Ideal Womanhood," Mrs. Standt's "Higher Values," Mrs. McLoed's "Thrift and Efficiency" and Dr. McKay's "Opportunities."

The year's mission class on "Immigration," "Alaska," "Mexico," "South America," China and Africa have widened the horizon of many of the girls and given them more of the world in which to find their work. We have heard return missionaries from many of these countries, among them Mrs. Condit from Alaska, Rev. Stone from China and Miss Matthew, our own representative in Japan whom we have helped to support through systematic giving.

Miss Matthew's visit and that of Miss Butler, one of our national secretaries whom Miss Fox brought with her on her last visit, are large features of the year we will long remember. But perhaps our own Miss Fox has still the largest place in our hearts.

The Bible class enrolled a large per cent of the girls in a closer study of the life of Christ and brought them into a closer personal relation to Him. Our desire has been to deepen the consecration of all the girls to definite service.

The year is drawing to a close and the new cabinet is forming plans for a larger and more efficient year in Spokane, and best of all the year for those who find it possible to go, the summer conference at Cohasset Beach. We are expecting at least ten of our girls to spend a week there they will never forget.



EDWARD HARWOOD

CALVIN FOX

GLENN H. RHODES

JAS. W. ROBINSON

CHARLES E. WHITE

JAY HOAGLAND

GUY LOWMAN

GERALD LONGSTRETH

Φ

Κ

Α

1914

PHI KAPPA ALPHA SOCIETY



## "The Student Volunteer Band"

Our band is not, accurately speaking, a volunteer band, for only three of the nine members are actually pledged for the foreign field. But if the field be extended to include all the world we may truly be called volunteers.

To trace our history we shall have to go back to the early part of the year. In the fall Mr. Seaman urged us to send delegates to the great convention at Kansas City. It seemed impossible at first until the student body rallied heartily to our support. After careful consideration Gladys Whipple and Gus Williams were chosen.

The convention gave us new visions of the great world of service, and when Mr. Hounshell, one of the traveling secretaries, came to us with the suggestion of organizing to include those vitally interested in missions, we gladly did so.

Since then we have met weekly to discuss missionary questions and gain inspiration and a bigger purpose from such men as John R. Mott and Robert E. Speer.

Several times we have been able to help in the services of small outlying missions. Once a month we have had very helpful meetings with Puget Sound College. On May 16 and 17 delegates from the volunteer bands of the Colleges of Western Washington gathered at the University of Washington to organize a union for the purpose of strengthening the missionary activities and intercessory prayer of the student's life. This first conference directed our thought into three channels: to look outward to the world as our field of service, upward to our Christ and inward to the equipment of our own lives.

### Y. M. C. A.

Although not accomplishing all that its members wished it to this year, the Y. M. C. A. has held many interesting and inspiring meetings, led by foreign missionaries and ministers from different parts of the state.

Besides the regular meetings an excellent course in Bible study was conducted by Professor Jackson every Thursday evening in the boys' dormitory. Also working in behalf of the Y. M. C. A. Glenn Rhodes supervised and gave athletic instruction to a club of neighborhood boys during the winter.

The officers for the past year were: President, Charles Parker; vice president, Ralph Ghormley; secretary, George Takaku; treasurer, Thomas Gunn.

### ROLL OF MEMBERS

BACHER, V.  
GHORMLEY, R.  
GUNN, A.  
GUNN, T.  
HANSEN, H.  
LEE, A.  
LONGSTRETH, G.

McCLAIN, A.  
McCLELLAN, R.  
MURDOCK, A.  
OSAKI  
PARKER, C.  
PARKER, G.  
ROBINSON, J.

TAKAKU, G.  
THOMPSON, N.  
TURNBULL, L.  
WAIT, W.  
WARE, C.  
WILLIAMS, G.  
WALMSLEY, R.

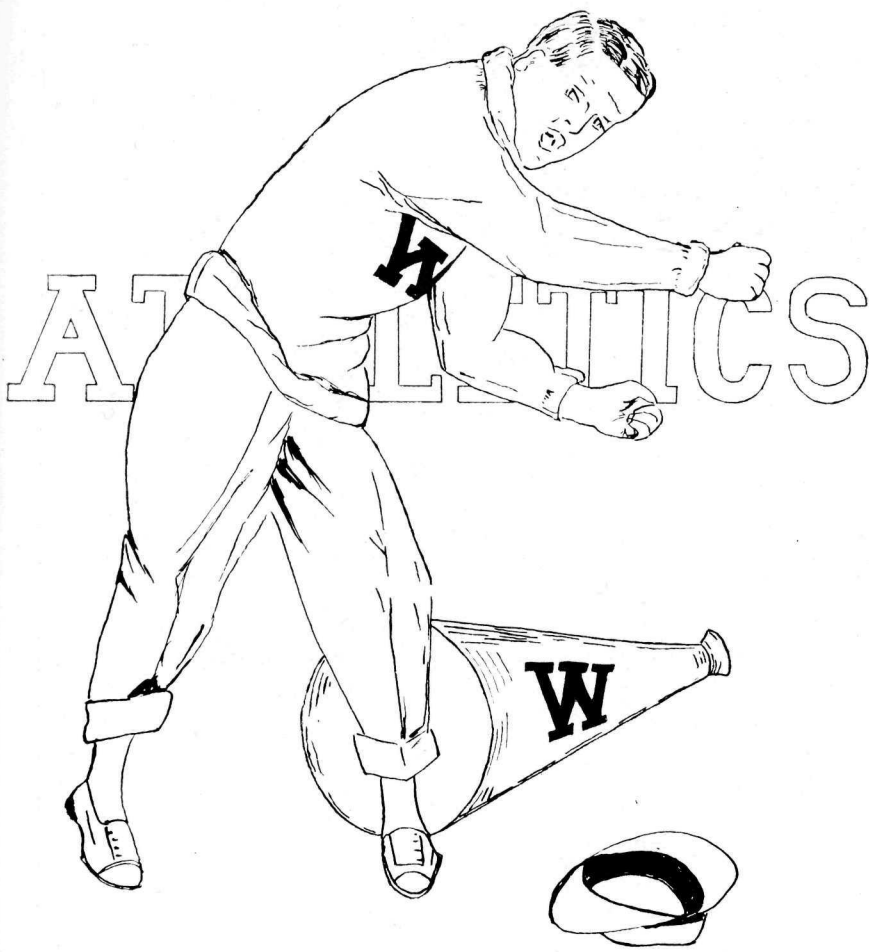


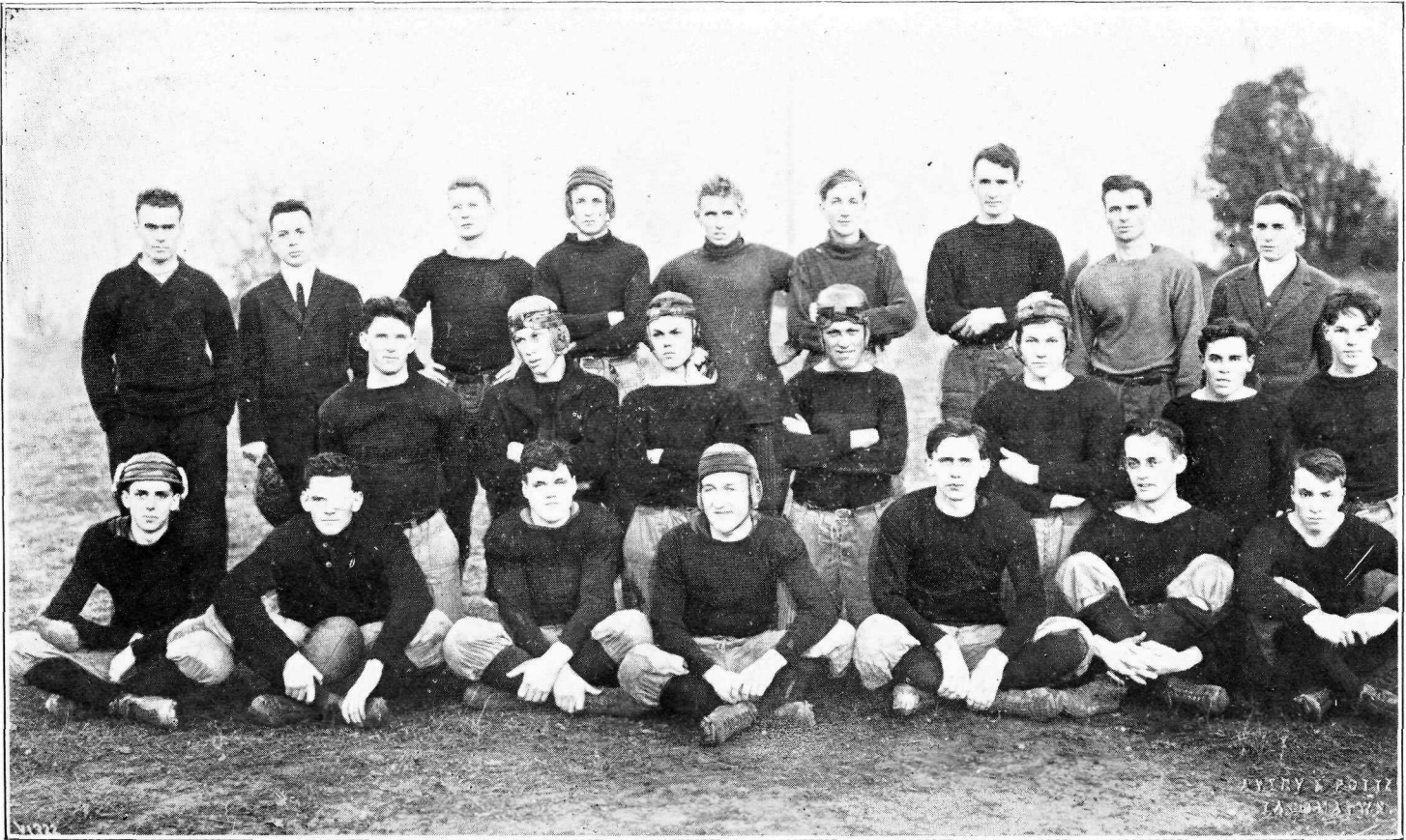
## The Vaudeville Show

For the benefit of the Annual, a vaudeville show was given May 21st in the chapel. It was a splendid success—one like we can have here at Whitworth!

This was the initial show of the tour of America which the companies are to make. The College Orchestra has refused European requests to appear on the continent for fear of showing up Europe's best artists. "A" was "a" overture which proved the orchestra's ability. "B" was a realistic study-hour scene from boys' dormitory life. If three moves equal a fire, how many stacks equal a kindling pile? "Doc Yak" and his famous racer "No. 8" no doubt won the race. Anyway, Gussy and Dusty were good. The skit "The Coming of Tom," showed us the makings of some pretty fine old maids among us. Dave Guy and Helen Ferryman are two of the cleverest little entertainers on the stage today. Some harmony the College Quartette had and the stringed instruments were fine, too! G! but Heine and Izzy ought to be lunatics all the time, for it's great to be crazy! "Let the Gold Dust Twins do your work," for judging by "H" they'll do it well. The Geisha Girls in "I" were indeed worth seeing a second or even third time.

The committee in charge were Calvin Fox, manager; "Happy" Hoagland, stage director and manager; Gerald Longstreth, advertising manager. They all worked like stavers and gave us the best managed program of the year. Congratulations are due every participant.





ATTRY & POLLE  
LANSING, MICH.



# Football

## TEAM

Augustus Williams '14, Captain, Right Tackle.  
Glenn Rhodes, Prep., Left Half.  
Vernon Bacher '16, Left End.  
Charles Parker '15, Right Guard.  
Charles Grinnell '17, Quarter.  
Wallace Wait '16, Left Guard.  
James Robinson '16, Right End.  
Jay Hoagland '17, Fullback.  
Allan Rushmer '17, Right Half.  
Ralph Ghormley '14, Left Tackle.  
Henry Hansen '17, Center.  
Coach, John R. Hayes.  
Manager, Armour Murdock '14.  
Trainer, Edward Harwood.

—o—

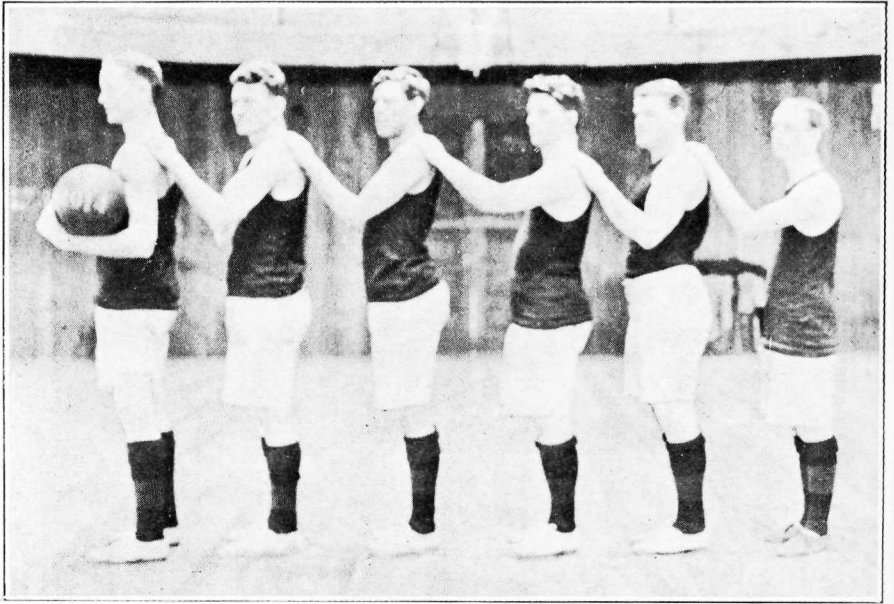
## SUBS

Tom Gunn  
Guy Lowman  
Charles Ware  
A. Lewis MacLean  
Paul Zobrist  
Arthur Lee  
Gerald Longstreth  
George Parker  
Noel Thompson

—o—

## GAMES

Aberdeen 14, Whitworth 0.  
University of Washington 100, Whitworth 0.  
Cushman 0, Whitworth 53.  
Gonzaga 34, Whitworth 0.  
All Navy Seconds 0, Whitworth 19.  
U. of W. Juniors 6, Whitworth 0.



## BASKET-BALL

—o—

### TEAM

Ralph Ghormley '14, Center.  
Jay Hoagland '17, Forward.  
Augustus Williams '14, Forward.  
Noel Thompson '15, Guard.  
Charles Parker '15, Guard.  
Charles Ware '17, Forward, Sub.

—o—

### GAMES

Cushman 31, Whitworth 18.  
St. Martin's 16, Whitworth 30.  
Stadium High 17, Whitworth 28.  
U. P. S. 10, Whitworth 31.  
Mineral A. C. 20, Whitworth 46.  
U. of W. Juniors 13, Whitworth 25.  
St. Martin's 37, Whitworth 28.  
Bellingham Normal 13, Whitworth 19.  
Shelton "All Stars" 20, Whitworth 33.  
Y. M. C. A. 29, Whitworth 18.  
Mineral 16, Whitworth 32.



## GIRLS' BASKET-BALL

—o—

### TEAM

Laura Pierson, Forward, Captain.  
Piercie Donald, Center, Manager.  
Mildred Wakefield, Forward.  
Florence Rambo, Guard.  
Lois Campbell, Guard.  
Edith Schnelby, Side Center.

—o—

### GAMES

Cushman 7, Whitworth 5.  
Annie Wright 12, Whitworth 6.  
Vaughn 7, Whitworth 20.  
Vaughn 6, Whitworth 10.

## CONTENTS

	Page		Page
Frontispiece—Mt. Tacoma		Sophomore Class .....	36
Foreword .....	3	Sophomore Class Roll .....	37
The Graduate .....	4	Executive Officers .....	38
Dedication .....	5	Freshman Take-off .....	39
Poem—Whitworth's Bequest .....	6	History of Freshman Class .....	40
Annual Staff .....	7	Freshman Class Officers .....	41
History of College .....	8	Freshman Class .....	42
Faculty Take-off .....	9	Freshman Class Roll .....	43
Dr. McKay, President .....	10	Poem—Happiness .....	44
Faculty members .....	11-15	Academy Take-off .....	45
Poem—To Friendship .....	16	History of Academy Class .....	47
Poem—Senior Class Prophecy.....	17-18	Academy Class Roll .....	48
Senior Take-off .....	19	Clubs Take-off .....	49
History of Seniors .....	20-21	-Kappa Gamma .....	50
Seniors .....	22-25	Kappa Gamma Roll Call .....	51
Class Poem—The Embarking .....	25	Y. W. C. A. ....	52
Whitworthian Staff .....	26	Y. W. C. A. Officers .....	53
Junior Take-off .....	27	Phi Kappa Alpha .....	54
History of Junior Class .....	28	Student Volunteers .....	55
Junior Class Play .....	29	Y. M. C. A. ....	55
Junior Class .....	30	Vaudeville .....	56
Junior Class Roll .....	31	Athletic Take-off .....	57
Campus Day Scenes .....	32	Football Team .....	58
Sophomore Take-off .....	33	Football Scores .....	59
History of Sophomore Class .....	34	Boys Basketball Team .....	60
Sophomore Class Officers .....	35	Girls Basketball Team .....	61

## INDEX TO ADVERTISERS

	Page		Page
Appolo Theatre .....	76	McMaster Photo Supply Co. ....	71
Book Exchange .....	66	Mason Hotel .....	75
Burnside Hat .....	69	Model Barber Shop .....	77
Baker, A. B. ....	76	Miller, Mower & Flynn .....	79
Benjamin Clothing Store .....	76	North End Fuel Co. ....	78
Barto's Ice Cream .....	77	Nereides Bath House .....	71
C. & G. Boot Shop .....	64	Puget Sound Flouring Mills .....	63
Cook Trunk Co.....	64	Rogers Nut Butter .....	66
California Florists .....	73	Rex Shoe Repair .....	66
Cloes, Dr. J. W. ....	74	Strain & Conant .....	67
Culbertson, Grote-Rankin Co.....	79	Shaw Supply Co. ....	73
Davis, M. L., Jeweler .....	65	Scott Studio .....	72
Day Jeweler .....	66	Sheldon's Lunch .....	75
Drury, The Tailor .....	72	Tacoma Furniture & Outfitting Co.....	67
Emley & Son, A. F. ....	78	Tacoma Trunk Co. ....	70
Foss Boat Co.....	64	Tutton Millinery .....	78
Furuya Co., M. ....	68	Weber Shoe Repair .....	66
Hoska Harness Co.....	70	Washington Hardware Co. ....	68
Kamour, Y. O. ....	70	Whitworth Express .....	68
Liberal Engraving Co. ....	71	Watson Florist .....	71
Love, Dr. ....	74	Wheeler & Martin Clothiers .....	73
Luckeye Dye Works .....	76	Wilbur, A. F. & C. E. ....	74
Lotus Grill .....	78	Whitlock Optical Co. ....	74
Men's Shoe Store .....	65	Wentworth Department Store .....	80
Moore's Pharmacy .....	66	Whitworth College .....	81
Muehlenbruch's .....	70	Young Press, The R. A. B.....	82



# Olympic Pure Products

---

## Olympic Family Flour

The standard of the Northwest. The people want a rich, cream-white color in their bread. That's why OLYMPIC FLOUR pleases everyone.

Packed in 49-pound, 24½-pound and 10-pound bags

## Olympic Cake & Pastry Flour

Made especially for rich, delicate cake and flaky pie-crust. For cakes of color, richness and velvety texture no ordinary flour can approach it.

Four-pound cartons 25 cents

## Olympic Wheat-Hearts

The little hearts of the finest wheat. A tempting breakfast dish easily cooked, of delicate flavor, and contains all the nutritive elements of the wheat berry.

Four-pound cartons 25 cents

## Olympic Pancake Flour

Self-rising, the leavening perfectly harmless, and the stock made of wheat only, pure and unadulterated. Olympic Pancakes agree with the most delicate stomach, so they are popular with everyone.

Four-pound cartons 25 cents

---

## The Puget Sound Flouring Mills Co.

TACOMA, WASH.



## Smart Pumps

COLONIALS and MARY JANE  
All the Latest Models  
\$3.00 and \$4.00

at

### The C. & G. Boot Shop

936 C Street

Miss Douglas: "Mr. Ware, what do you know about onomatopoeic verse?"

Mr. Ware: "I don't know, what do you think?"

Miss D.: "I don't think, I know."

Mr. W.: "I don't think I know, either."

—o—

Helen Trentler (at football game): "Who is the man they're quarreling with?"

Mildred Zobrist: "Why, he's the one that's keeping the score."

Helen: "Oh, and won't he give it up."

—o—

C. W.: "Have you ever had your ears pierced?"

V. C.: "No, only bored."

## FOR LAUNCH PARTIES

SEE US FOR PRICES.

Our service recommended  
by the Whitworthian.

### The Foss Launch Co.

Phone Main 189.



Cook Trunk Co.  
1203 Pacific Ave.

"GOOD LEATHER GOODS"

Exclusive Sellers of

### INDISTRUCOTRUNKS

PATRONIZE OUR ADVERTISERS

*Stones of All Kinds Cut and Polished.*

*Expert Watch Repairing and Engraving.*

# M. L. DAVIS

Diamonds Watches

—AND—

Jewelry

*Manufacturer of*

GOLD AND DIAMOND MOUNTED JEWELRY

COLLEGE AND FRATERNITY PINS,

MONOGRAMS, FOBS, ETC.

SPECIALS

T. H. S. Buttons and Pins.....25c

U. P. S. and W. C. Pins..... 50c

908 PACIFIC AVENUE.

TACOMA, WN.

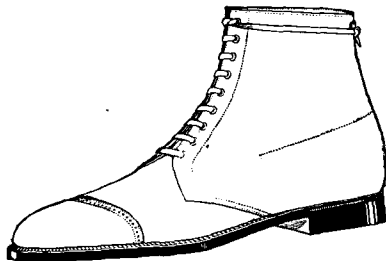
---

---

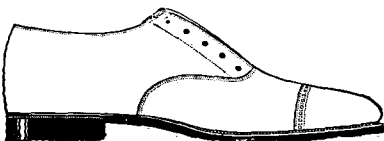
## Announcement

---

---



We specialize in Men's Footwear ONLY. Our stock is all new and up-to-date and contains the better makes: James A. Bainster's High Grade Shoes, and Bostonian Famous Shoes for Men. You will have no trouble in selecting the style you like at a price that is right.



936 Pacific Avenue.

**THE MEN'S  
SHOE STORE**

PATRONIZE OUR ADVERTISERS

---

# Moore's Pharmacy

---

*Come to see Our Drug Store.*

---

North 26th and Proctor.

*Physicians and Metitians  
Highly Recommend*

## Roger's Nut Butter

for those who labor with either  
Brain or Brawn.

AT YOUR GROCERS.

We Carry the NOTED

## La Tansca Pearl STRINGS

of various lengths. Prices range from  
\$4.00 to \$255.00 a string. We also have  
everything that you will find in a first-  
class jewelry store.

## DAY JEWELRY CO.

939 C Street

Repairing Done While You Wait

## Rex Quick Shoe Repair

L. B. Austin, Prop.

916 Commerce St.

*Remember our new location*

## Quick Shoe Repair

ALBERT WEBER, Prop.

---

934 Commerce Street

---

*THE BEST OF WORK*

## The Book Exchange

736 Pacific Ave.

---

TECHNICAL BOOKS  
*DRAWING INSTRUMENTS*

---

DRAFTSMEN'S SUPPLIES

---

PATRONIZE OUR ADVERTISERS

# Men of WHITWORTH

—0—

## ANNOUNCEMENT

After seven years at our present location, during which we have enjoyed your valued patronage,

## We are MOVING

to a larger room at

## 950 Pacific Ave.

now occupied by HART THE JEWELER. There we will welcome you and assure you of the same high standard of merchandise and never failing courtesy that has always been characteristic of this store.

—0—

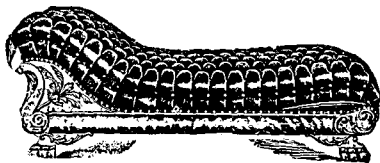
# Strain & Gonant

## IF YOU ARE GOING TO FURNISH A HOUSE, FLAT OR HOTEL GET OUR PRICES

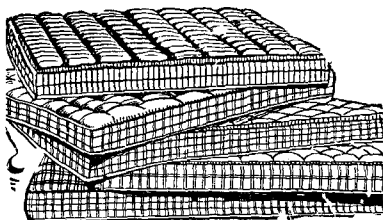
COMPARE THEM WITH OTHERS  
THEN MAKE YOUR OWN TERMS

9x12 Brussels Rugs, for...\$10.85

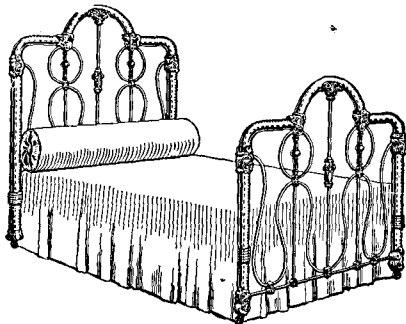
9x12 Axminster Rugs, for.\$18.75



\$22.00 Couch upholstered in  
Cnase leather .....\$15.75



40lb. Cotton Felt Mattress,  
special .....\$6.50



A complete assortment of Vernis  
Martin and Enameled Beds,  
up from.....\$2.75  
Make Your Own Terms With Us

## Tacoma Furniture & Outfitting Co.

911-13 "C" STREET

PATRONIZE OUR ADVERTISERS

# Camping Outfits Sporting Goods

—o—

## Washington Tool & Hardware Co.

928 PACIFIC AVENUE.

PHONE MAIN 171.

### TRUNK

Carted to and from  
Depots

**50 cts**

Proctor 621.

—o—

### Whitworth Express & Transfer Co.

North 34th and Proctor.

#### STORES:

Seattle, Wash., Portland, Ore., Van-  
couver, B. C., Yokohama, Japan, Kobe,  
Japan.

COMPLIMENTS OF

### M. Furuya Co.

IMPORTERS OF

Japanese Art Goods, Japanese Merchandise,  
Food Supplies.

—o—

EXPORTERS OF

Sewing Machines, Food Supplies, Electrical  
Goods.

—o—

1355 So. C St., Tacoma, Wash.

PATRONIZE OUR ADVERTISERS

---

# Hurry!!!!

---

Judging from the way they're buying Straws, a Derby or Soft Hats on the street will soon be something to turn and look at.

Everybody is so eager because this year's styles are better than ever.

Get one while there's glory in it!

---

## **BURNSIDE Hat Shop**

---

*Always \$2.00*

---

**948 Pacific Ave.**

---

Idelle M. to Glenn R.: "I know where you got that necktie."

Glenn: "Yes, no you don't. Where?"

Idelle: "Why, you got it around your neck."

---

Professor Guy was recently a witness in a suit case. This no doubt accounts for that crushed look of his.

Duo Williams (giving example of indicative, subjunctive, potential and exclamatory moods):

1. 'I am endeavoring to pass an English examination.

2. 'If I answer twenty questions I shall pass.'

3. "If I answer twelve questions I may pass."

4. 'Heaven help me!'

---

Edith: "Do you know the most popular way to dress the hair?"

Billy: "No, I haven't heard."

Edith: "A la divorcee."

Billy: "My, how's that?"

Edith: "Garted."

---

Mrs. Bell to Mr. Murdock: "I'll give you just three days in which to pay your rent.

Murdock: "All right! I'll take the Fourth of July, Christmas and Easter."

---

Miss Bedell (in Domestic Science): "Show Frances how to put her tongue in the fireplace, Cooker."

---

PATRONIZE OUR ADVERTISERS

Phones: Main 2536; 2631

Japanese  
AND  
Domestic  
GOODS

*Cars stop at our Front*

Y. OKAMARU CO.

1333 So. C St.

Tacoma,

P. O. Box 766

Wash.



**TRUNKS BAGS  
SUITCASES**  
TACOMA TRUNK FACTORY  
931 SO. C STREET

CONFECTIONS OF QUALITY

*Muehlenbruchs*

905 SO. C STREET  
1111 TACOMA AVE.

*We Solicit Your  
Patronage*

PURE ICE CREAM

**A. F. HOSKA HARNESS CO.**

DEALERS IN  
LEATHER GOODS, SUIT CASES  
TRAVELING BAGS, MONEY BELTS  
POCKET BOOKS, SPORTING GOODS, FISHING  
TACKLE, GUNS, REVOLVERS  
WATCHES, CLOCKS AND JEWELRY

1307 PACIFIC AVENUE  
TACOMA, WASH.,

PATRONIZE OUR ADVERTISERS



**\$ 25.-30.-35.00**



Made from the finest English, Scotch or domestic woolens, any style or cut you desire.

We press and keep in repair all suits we make, free of charge.

**DRURY**

**The Tailor**

114 South 12th Street.

**Mc Master  
Photo  
Supply**

KODAK FINISHING AND  
ENLARGING

*All Films Bought Here De-  
veloped Free*

771 South C Street, Chamber  
of Commerce Building.

Tacoma, Wash.

**FLOWERS  
For  
Graduation**

Let us show you the correct "Gift of Flowers" to express your good wishes to the friends who graduate this month. We offer only the freshest, most beautiful specimens of every variety obtainable.

**Watson, Florist**

937 1-2 South C. Main 2045.

**NEREIDES  
BATHS**

WARM SALT WATER

FOR SWIMMING

Tank 50x150

**Pt. Defiance  
Park**

PATRONIZE OUR ADVERTISERS



*Scotts*  
*Sticks*  
TACOMA

THE MARK OF Quality

An illustration showing two hands. One hand holds a scroll with a circular logo, and the other hand holds a rectangular box, also featuring the same logo. The logo consists of a stylized 'S' and 'E' intertwined within a circle.

**LIBERAL ENGRAVING** ©

915 1/2 COMMERCE ST.  
MAIN 3968

**DESIGNERS  
ILLUSTRATORS  
PHOTO-ENGRAVERS**

Ruth Lee (in Home Nursery): I know of a Presbyterian minister who was inoculated and had a very light form of typhoid fever, and three Methodist ministers in the same place caught the same thing and died with it."

—o—  
*Knowledge of Preps.*

Frances (looking into mirror at her nose): "Why, girls, my epiglottis is peeing off."

—o—  
Prof. Holcombe:—"You may give me three important powers of the press."

Charles Parker: "Cider, Courtship and Politics."

—o—  
Harwood: "What did you say when the audience threw cabbages at you?"

Robinson: "Oh, I just said I had hoped they would be pleased, but hadn't expected they would entirely lose their heads."

—o—  
Dr. Lee: "Can any of you quote a verse of scripture forbidding anyone to have two wives?"

Mr. Harwood: "No man can serve two masters."

—o—  
Miss Douglas: "What are the great periods of the English language?"  
E. D.: "9:20 and 1:20."

PATRONIZE OUR ADVERTISERS

Extra Trousers  
\$2.50, \$3.50, & \$5.00  
and  
High Grade  
Furnishings



SUITS AND RAIN-  
COATS ALWAYS  
\$10, \$15 and \$20

TACOMA. WASH.

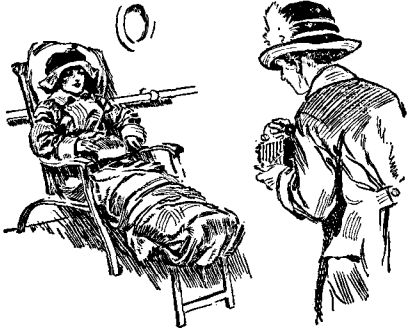
What Is It, Fellows?

VACATION, OUTING OR GRADUATION.

*Remember We Have Them at*  
\$10.00, \$15.00 and \$20.00

WHEELER & MARTIN  
936 Pacific Avenue.

# KODAK



**YOUR VACATION'S PLEASURE WILL**  
in the taking of Kodak Pictures. It  
will remain a living **memory** in the  
Kodak album.

Bring your Films to us for finishing.

## Shaw Supply Co.

919 Pacific Avenue.

## Commencement Bouquets

Just what you want in Classy  
Corsages and Cut Flowers.

ROSES OF ALL KINDS  
LILY OF VALLEY  
SWEET PEAS

*And All Seasonable Flowers.*

The Price Is Right.

## California Florists

907 Pacific Ave. Main 7732.

PATRONIZE OUR ADVERTISERS

*These Ads have been given not for the Sole purpose of advertising,  
but mainly to help the paper.*

Res. Phone  
Main 2599

Office Phone  
Main 848

**Dr. L. L. Love**

PHYSICIAN AND SURGEON



National Realty Bldg

**Drs.**

**A. F. & C. E.**

**Wilbur**

**DENTISTS**

Main 1127

1111 Fidelity Bldg.



**Whitlock Optical Co.**

OPHTHALMOLOGIST & NEUROLOGIST

930 1-2 Pacific Avenue, Tacoma, Wash.

G. E. WHITLOCK, Oph.D. N.D.    M. C. WHITLOCK, Oph.D.

**Dr. J. W. CLOES**

**DENTIST**

322 and 323 BANKERS TRUST BLDG.



*The Management of the Annual  
takes this opportunity of thanking all  
those who helped to make the Annual  
possible. To the Advertisers we are  
greatly indebted for this loyal support  
and co-operation and with the closing  
of the school year we wish them all the  
greatest of success.*



PATRONIZE OUR ADVERTISERS

Judge: "It seems that I have seen you before."

Prisoner, Armour Murdock: "You have, Your Honor. I used to give your daughter singing lesso"

Judge: "Twenty years."

Dr. Lee (in Latin Class): "Mr. Longstreth, don't you think you should turn the page, you have translated eight lines on the next one."

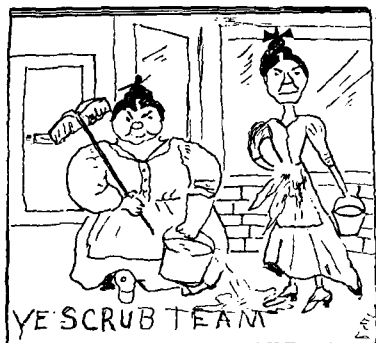
Murdock (after orating for a long time): "Miss Lentz, what do you think of my execution?"

Fellow Student: "I'm in favor of it."

Miss Lentz: "Very good; but you must speak louder, get more spirit into this. Open your mouth and throw yourself into it."

Teacher to New Scholar: "Boy, boy, where is your intuition?"

Boy: "I didn't know we had to bring that, too."



DON'T FORGET

The most satisfactory place to  
Eat in Tacoma is

## Sheldon's Lunch

Corner 11th and Commerce.

IN TACOMA

THE

## Hotel Mason

for a quiet,  
well-kept place  
at a moderate  
Price

All conveniences

Corner 10th and A Streets

C. R. HADLEY,  
Proprietor.

PATRONIZE OUR ADVERTISERS

# Luckey's Dye Works

Main 7161

738 St. Helens Ave.

We carry a full line of Picnic Supplies.—Also a small line of Dry Goods and Notions.

## A. B. BAKER

ICE CREAM, FRUITS, CANDIES, CIGARS, TOBACCO

Telephone Proctor 1816

41st and Cheyenne St.

## L. Benjamin, Inc.

Arrow Collars and Shirts.

Athletic and B. V. D. Underwear.

o o o

THE HOUSE OF BENJAMIN'S FAMOUS \$20.00 SUITS.

740 Pacific Avenue.

Elks Building.

THE ANDERSON AMUSEMENT CO.  
*announces the opening of the*

## APOLLO

*A HIGH-CLASS MOTION PICTURE*

To be opened about June 10th. We feature best Photo Plays and Highest Class Musical Numbers.

Location, 1131-33 C Street, Just South of the Horgan-Parker Store.

PATRONIZE OUR ADVERTISERS

The following is a boy's essay on the dachshund:—

"The dachshund is a dorg notwithstanding appeerencis. He has fore legs two in front an two behind, an' they ain't on speaking terms. I wunst made a dockshound out of a cowcumber an fore matches, an' it lookt as nacheral as life. Dockshounds is farely intelligent considering thare shape. I hare brains bein so far away from thare tales it bothers them sum to wag the lattur. I wunst noo a dockshound who wuz too impashunt to wate till he cood signal the hole length of his boddy when he wanted to wag his tale, so he maid it up with his tale thet when he wanted it to wag he wood shake his rite ear, an' when the tale seen it shake it wood wag. But as fer me, gimme a bull pup with a peddygree.

—o—

Expert

Heine:—"Come on and play the piano."

Dutch:—"Can't do it, but I played our phonograph once and broke a record."

—o—

Prof. Hewitt:—"What is oxygen?"

Emma G.:—"Oh, I know; its a funny little thing with eight sides!"

—o—

Good Advice

Develop a faculty for work, but be shy about working the faculty.

H. J. CONRAD.

W. A. JAMES.

## MODEL BARBER SHOP

Conrad & James, Props.

SIX CHAIRS. PROMPT SERVICE.

903 Pacific Ave., Tacoma, Wash.

# Barto's

CANDIES

and

ICE CREAM

ARE SURE

TO GIVE

SATISFACTION

—o—

SPECIAL RATES TO

SCHOOLS AND

SOCIETIES

—o—

Phone Main 790

1105 Tacoma Avenue

PATRONIZE OUR ADVERTISERS

## North End Fuel Co.

COAL AND WOOD

Place your order for your winter's supply of Slabs and Furnace Coal with us at once—early.

Office and Yard, No. 27th and Proctor.  
We Give Green Stamps.

## MILLINERY

### Miss. Tutton

NEW GROSS BLOCK

Prices Greatly Reduced.

A. M. Akin

C. O. Lee

"The House of Quality"

## Lotus Grill

TACOMA'S NEWEST  
And MOST POPULAR  
EATING PLACE

Yours for Business

Main 1847

1003 Pacific Avenue

Tacoma

Professor:—"The examination questions are in the hands of the printer. Are there any questions to be asked on the examination?"

Voice (from rear of the room)—  
"Who is the printer?"

—o—

Tantalizing

Miss La Wall:—"I hear some one jingling money; I wish that person would put it away, it is very annoying to listen to.

—o—

"Is Mr. Guy going abroad with Miss Douglas this year?"

"Why no! he doesn't need to, he can see (France) every day."

Two brothers there were of Sioux City;

Each one thought the other tioux pretty.

So each took his knife

And the other one's life.

Now which of the toux dioux Yioux pity?

A Monopoly

He:—"I've heard that the disagreeable traits of the parents are divided among the children."

She:—"Judging from that you must be an only child."

## A. F. EMLEY & SON

GROCERS

A FULL LINE OF HIGH GRADE GOODS

Phone Proctor 408

42nd & Cheyenne Sts.

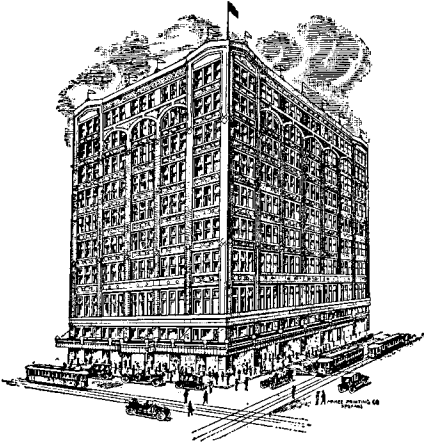
PATRONIZE OUR ADVERTISERS



# Spokane's Greatest & Washington's Finest Department Store

The new Culbertson, Grote-Rankin Store will be the merchandise center for Whitworth Students and Faculty. We extend a cordial welcome to all to become our customers and our friends when the new college opens in September.

Every department that you generally find in a great store will be found here, always featuring the newest goods and selling at the lowest Prices.



## Culbertson Grote-Rankin Company

The Store of Dependable Merchandise

## Ladies & Misses Coats & Suits Mens & Boys Coats & Suits

At right prices, in right styles, of dependable materials, properly put together.

It is important in coming to a new location to find a satisfactory place at which to trade. You will make no mistake in purchases made from us. We are Complete Outfitters of Ladies, Men, Girls and Boys Also carry a complete line of Dry Goods. Imported linens direct from the makers in Belfast, Ireland, one of our specialties.

## Miller, Mower & Flynn

926-938 RIVERSIDE AVE., CORNER OF MONROE ST.  
SPOKANE, WASH.

PATRONIZE OUR ADVERTISERS

---

---

# Wentworth's

---

THE CLOTHING STORE YOU'LL KNOW  
BETTER WHEN YOU COME TO SPOKANE

---

Not only the largest and Best exclusive Men's  
shop in the city but the store that has worked hard  
to bring "Whitworth" college to Spokane.

EXCLUSIVE AGENCY FOR

"L system" college for Young Gentlemen,  
"Munsing" Union Suits,  
"Clothes of Refinement,"  
"Holeproof" Hosiery for Men, Women and  
Children.

YOU'LL GET A CORDIAL WELCOME HERE

---

## Wentworth Clothing House

Entrance—709 Riverside Avenue

---

---

At the Picnic

Wilma C:—"We've been in this boat an hour and we haven't moved a yard."

Hans:—"That's nothing. I can run a mile and only move two feet."

—o—

Coach Hayes:—"History always repeats itself."

Charles P:—"Well, why in the world doesn't it repeat itself when I'm trying to recite?"

—o—

"Yes, motner, when I graduate I intend to follow a literary career—write for money, you know."

"Why, George, my dear you haven't done anything else since you've been at college."

—o—

Prosecuting Attorney:—"Was the prisoner in the habit of singing when he was alone?"

Witness:—"Shure and Oi can't say, for Oi never was wid him when he was alone."

—o—

Alike, But Different

Yes, words may sound alike, yet have

Dissimilar meanings maybe;  
How dnterent is a weak old man  
From just a week-old baby.

—o—

Feminine Geography

Cape of Good Hope, sweet sixteen;  
Cape Flattery, twenty;  
Cape Lookout, twenty-five;  
Cape Fear, thirty;  
Cape Disappointment, thirty-five;  
Cape Farewell, forty.

# Whitworth College In Spokane

—o—

First brick building ready for occupancy August 15th, 1914.

Work opens up without interruption September 22d.

The aim of the College is thorough scholarship and broad Christian character.

For catalogues and college literature address Whitworth College, 540 Rookery Building,

Spokane, Wash.

DONALD D. McKAY,  
President.

WHITWORTH COLLEGE  
Spokane, Wash

Books, Magazines  
Art Novelties

Special Two-Color  
Work

*The*  
**R. A. B. Young Press**  
GENERAL COMMERCIAL  
**Printing**  
IN ALL  
ITS BRANCHES

Phone Main 1777

TACOMA, WASHINGTON